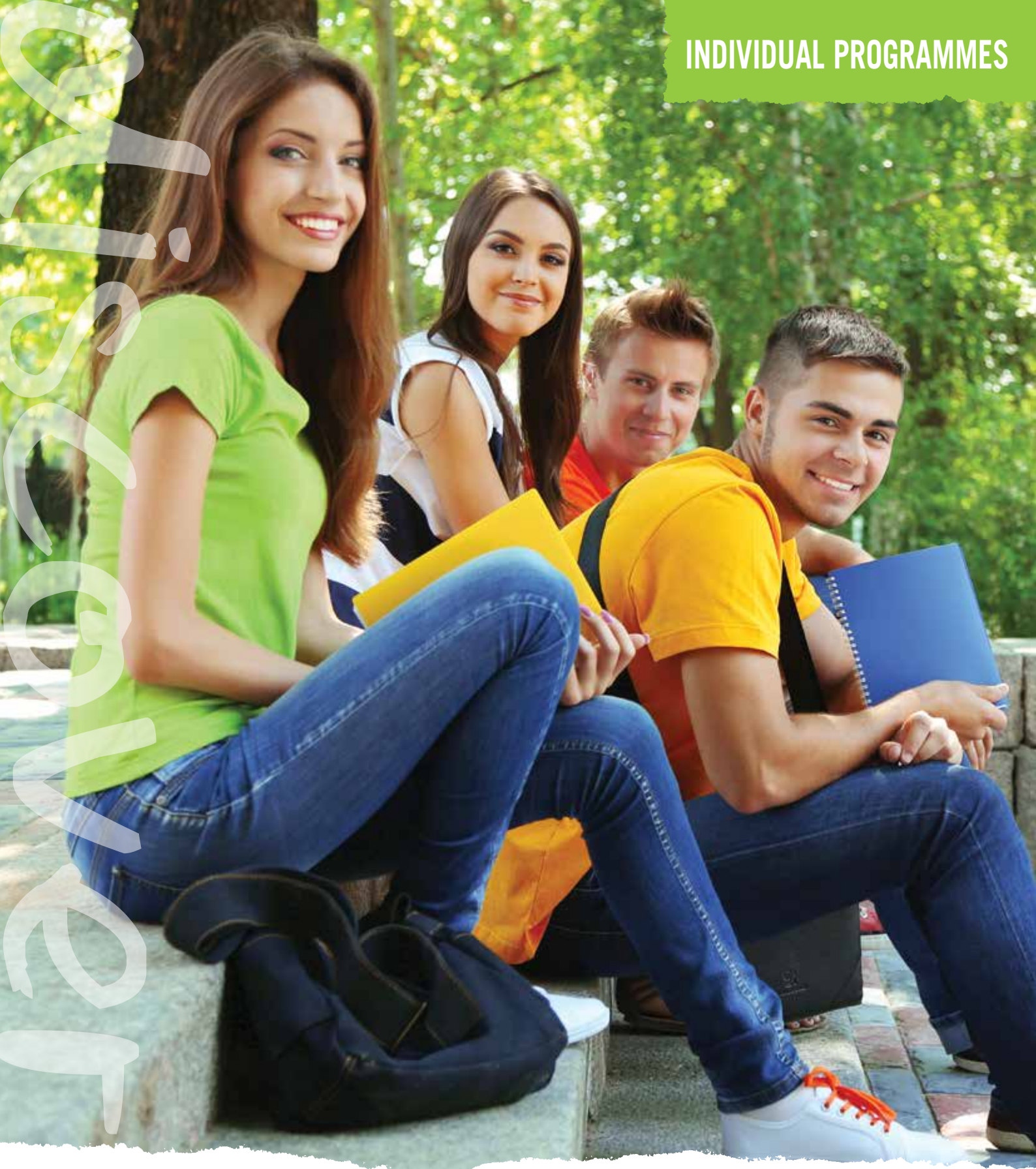


INDIVIDUAL PROGRAMMES



**The Training
Partnership**
discover who you are

WORLD CLASS PROGRAMMES CREATED ESPECIALLY FOR YOU!



 BRISTOL

Dartmoor National Park

EXETER 

NEWQUAY

TORBAY

PLYMOUTH 



One of the most stunning locations in the UK with miles of coastline to explore, beautiful beaches, glorious countryside and National Parks all within easy reach of our offices in Torbay. Travel is easy with airports at Bristol and Exeter and ferries from Plymouth to Roscoff and Santander.

Welcome to the beautiful south west

The Training Partnership

- 20 year track record of developing and delivering exceptional programmes
- Database of over 400 employers increasing every year as we move into new sectors
- Over 300 homestays
- Head office in beautiful Torbay – *The English Riviera*



Talk to us

Give us a call today, or email us at info@ttpl-uk.com to find out more

What you get

- Exceptional support
- Experts who understand your needs
- Programmes developed for you
- Hundreds of work placement opportunities – Engineering, IT, hospitality and many more
- Exciting social programme
- Friendly host families and other accommodation options
- Programmes in 'The West Country' - the most beautiful part of England



CONTENTS

- 3 WELCOME TO THE TRAINING PARTNERSHIP
- 4 WELFARE AND SOCIAL PROGRAMME
- 6 ACCOMMODATION
- 7 UK PROGRAMMES
WORK EXPERIENCE
ERASMUS+
TEACHING ASSISTANT
ENGLISH LANGUAGE
- 15 HOW TO APPLY

WELCOME

Welcome from TTPL

A very warm welcome from the team at the Training Partnership Limited. For 20 years we have been working to provide the very best programmes possible. We achieve fantastic results, create programmes that meet your needs and provide brilliant educational and cultural experiences.

Discover who you are

People who take part in our programmes love them. In 2015, nine out of ten trainees on programmes with us rated their experience as an 8, 9 or 10 out of 10! And 96% of our trainees say they would definitely recommend us to others.

Take a look at the programmes we offer – there are details in the brochure. All have fantastic satisfaction rates from trainees. And remember, we can work with you to create a bespoke programme that is perfect for you.

So, talk to us today on +44 (0)1803 321210 or email info@ttpl-uk.com.

We look forward to hearing from you very soon.

Nadine

Nadine Stroud
Business Development Director



The Training Partnership
discover who you are

So much you can do...

MONDAY	Welcome meeting
TUESDAY	Language café
WEDNESDAY	Pizza with new friends
THURSDAY	Social meeting
FRIDAY	Night out

WELFARE AND SOCIAL PROGRAMME

Discover who you are with an exciting and varied social programme

We work hard to make sure everyone enjoys their time with us. Our fun and lively social activities are designed to suit the many different people who take part in our programmes.

- Regular social meetings
- Events and trips
- Weekly Language Café
- Facebook group to share news, events and activities
- Student Ambassadors

Days out and weekend excursions can also be arranged. We are always happy to offer advice on where to go and what to do.



Talk to us

Give us a call today, or email us at info@ttpl-uk.com



"I had a really amazing time here in England, thanks to TTPL. During the student meetings I met incredible people who I'm still in contact with and made really good friends. Thank you TTPL for that!"

Marina, Germany



"The stay in England was very well organised by TTPL. I really like the meetings on Tuesday evening in a café with other students, and activities on Thursday that allow us to have fun and make more friends, and open up to other cultures. I thank TTPL for this stay. It will remain a very good memory!"

Estelle, France



Included

Included in the welfare package is:

- Welcome meeting
- 24/7 UK emergency contact number
- Dedicated Student Support officers
- Up to 3 contact meetings each week
- Facebook pages and groups
- Student Ambassadors
- Accompanied work placement start
- Accompanied medical appointments
- Office access Mon – Fri 9am-5pm



Socialise

Our busy social programme helps you make new friends, explore the local area and find out more about life in Britain. Here's a taster of some of the many activities we arrange:

- Bowling
- Barbecues
- Pizza at the beach
- Museum visits
- Cinema trips
- Visits to the zoo
- Cream Tea experience
- Kents Cavern



ACCOMMODATION

When it comes to accommodation there are options for all budgets

Living in a homestay is a great way to embrace English culture and improve your English skills. Our families provide a safe and friendly environment for you to develop your social and communication skills.

We select our families very carefully. All are regularly inspected by our Accommodation team, so that we can offer the very best experience possible.

Families are asked to treat you like a member of their family and include you in their weekly activities if you wish.

If you prefer to be more independent, you can live in a shared apartment or within a family home where you are responsible for your own laundry, cooking, cleaning and shopping.

Accommodation is sourced according to requirements and location, as close to the work place as possible.

Options

- Half Board – Breakfast and Evening Meal Provided
- Full Board – Breakfast, Lunch and Evening Meal Provided
- Self-Catering – Room only with shared use of all facilities

"Loveliest host family ever! They have helped me to enjoy my stay in Torquay. The school is also fantastic!! Very kind and I have learned so much! Thank you for everything!!"

Tania, Spain



Talk to us

Give us a call today, or email us to find out more. Call +44 (0)1803 321210 or email info@ttpl-uk.com

UK PROGRAMMES



Included

- Organisation of suitable work placement
- Organisation of carefully selected accommodation
- Meeting by representative on arrival
- Welcome pack
- Comprehensive welcome meeting
- Accompanied work placement start
- Weekly Social meeting
- Weekly Language Café
- 24/7 Emergency phone support
- Accompanied visits to Doctor, Dentist etc.
- Certificate of participation
- Strict health and safety checks for work placements

Here's our A-Z of opportunities...

ACCOUNTANCY
 BAKERY
 CHILDCARE
 DENTISTRY
 ENGINEERING (most sectors)
 FINANCE
 GRAPHIC DESIGN
 HOSPITALITY
 INFORMATION TECHNOLOGY
 JOURNALISM
 KITCHEN PORTER
 LABORATORY AND LAW
 MARKETING
 NETWORK ENGINEER
 OPTOMETRY
 PRINTING AND PUBLISHING
 QUEEN OF ENGLAND (only joking!)
 RETAIL
 SHEET METALWORK
 TEACHING
 UNIVERSITY START-UPS
 VEHICLE REPAIR
 WEB DESIGN
 XCELLENT STANDARDS
 XCELLENT RESULTS!
 YOUTH WORK
 ZOOLOGY
 plus many, many more

WORK EXPERIENCE PROGRAMMES

We have placement opportunities across most sectors to help you progress your career

We offer the highest quality unpaid work placements across all sectors of industry from administration and tourism, to mechanical engineering and technology. There are not many areas of business that we don't work in!

We are constantly managing and growing our exceptional portfolio of employers to ensure you will experience training that will maximise your career prospects whilst developing your English language skills.

Work placements are secured according to your needs, skills and career objectives.

All of our placement companies abide by current UK legislation, have valid insurance and comply with our own Health and Safety standards which can be found on our website.

"My company gave me the opportunity to learn a lot about a big multinational business, about my department, and they have opened my mind and showed me different ways to work. Most importantly they gave me the opportunity to learn and improve my English." Miguel, Spain





"It isn't just what the students can learn from us, it is what we can also learn from them."

K Allen, Bay Advocates Ltd, work placement company



Talk to us

Give us a call today, or email us to find out more. Call +44 (0)1803 321210 or email info@ttpl-uk.com

Who can take part?

The programme is available for anyone with EU citizenship aged 16 to 80 years old, regardless of their academic background. For professional placements, a minimum B1 level of English (Common European Framework for Languages) is requested.

"From introductions to final goodbyes TTPL were there every step of the way and the students we have had the pleasure of joining us have been excellent!"

R Nethercliff, Insignia Creative, work placement company

Why not...

Join our LinkedIn Alumni Group?



ERASMUS+



We are Erasmus+ experts and will work with you to create your programme if you receive Erasmus+ funding

We have been the Receiving or Sending partners on over 150 successful Mobility, VETpro and TOI European projects over the last 5 years and we continue to collaborate under the Erasmus+ framework.

Our programmes are highly adaptive and easily complement the Key Action 1 & 2 Objectives for VET, Adult Education, Schools and Higher Education funding.

For Key Action 1 Mobility projects we can provide you with a bespoke programme that suits your objectives. We adhere to the European Quality Charter for Mobility and always work within the Quality Commitment for Training Placements.

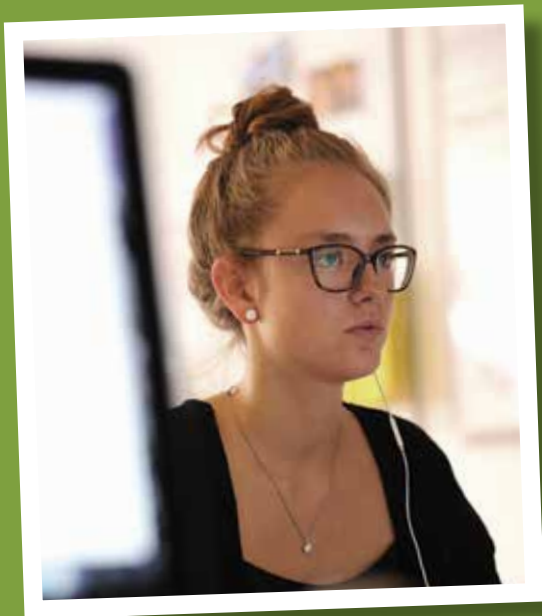


Talk to us

Give us a call today, or email us to find out more. Call +44 (0)1803 321210 or email info@ttpl-uk.com

"I've been working for many years with companies that deal with Mobility programmes and I have to say that I love working with TTPL. They are serious, formal and professional."

Angels, Head Teacher, Spain



TEACHING ASSISTANT PROGRAMME

A real-life work experience in a Primary or Secondary School accompanied by high quality training delivered by industry professionals

We are supported by over 30 local schools who are keen for their pupils to experience different cultures and teaching styles.

We offer great opportunities for qualified teachers, graduates and undergraduates interested in the education sector. This is a specialised six-week programme that includes unpaid work experience and a bespoke training course focusing on the British education system.

"José was an enthusiastic, hardworking and useful member of the school team, supporting children and staff in school and working in the after school club. He especially enjoyed working with the older children."

Torre C of E Primary School



Included

- Six weeks of vocational work experience in a local school as a Classroom Assistant
- Classroom-based sessions delivered by qualified UK teachers and industry experts
- Cross Cultural Communication skills
- Conversational English
- Organisation of carefully selected accommodation
- Meeting by representative on arrival
- Welcome pack
- Comprehensive welcome meeting
- Accompanied work placement start
- Weekly Language Café
- Weekly Social meeting
- 24/7 Emergency phone support
- Accompanied visits to Doctor, Dentist etc.
- Certificate of participation
- Strict health and safety checks for work placements





ENGLISH LANGUAGE COURSES

Build high quality General or Conversational English language learning into your programme

Our excellent language programmes are offered all year round, in a mixed nationality environment, that helps develop people's cultural and social skills whilst learning English.

Teaching is delivered by a team of accredited staff who have experience of working in both the public and private sectors. Programmes can be held in open or closed groups and adapted to suit individual group needs.

General English – 15 hours per week (20 lessons) that focuses on grammar, reading, listening and communication techniques, vocabulary pronunciation and intonation.



Included

- Organisation of classes
- Organisation of carefully selected accommodation
- Meeting by representative on arrival
- Welcome pack
- Comprehensive welcome meeting
- 24/7 Emergency phone support
- Accompanied visits to Doctor, Dentist etc.
- Weekly Language Cafe
- Weekly Social meeting
- Certificate of participation

Language Café

The Training Partnership runs a regular, free evening Language Café. Everyone on our programmes is welcome. The café allows people to meet other trainees, speak English in an informal setting, have a chat with one of our representatives and of course, have some fun!

Why not...

Join our LinkedIn Alumni Group?

Build your career network, find top tips and read all the latest news by visiting www.linkedin.com/grps/Training-Partnership-Ltd-Alumni-8222820/about?



"It's very important for my future work because I have learnt a lot of social skills."

Lisa, Italy

5 REASONS TO CHOOSE THE TRAINING PARTNERSHIP

1

It's about the bigger picture

For us, the focus is on the whole experience – quality learning, the great friendships made and priceless experiences. We are proud of our reputation for providing brilliant work placements combined with a lively social programme.

2

Personal approach

We develop programmes to match your objectives – and it works! Since 2013 we've hosted nearly 3000 trainees, providing a range of fantastic work placements, training courses and bespoke study programmes.

3

24/7 support

We have everything that you need – a fantastic range of placements, great language training, support and social activities.

4

Brilliant social programme

You will meet people from all over the world, make new friends and grow your social network.

5

We are in the best place

We are based in one of the most beautiful parts of the UK, in the South West of England, with wonderful cities, countryside and coast.



"I absolutely love it. I get young people from all over the world coming to stay with me and I keep in touch with them when they leave. I've been to a wedding of an Italian who stayed with me and another has just got engaged. At Christmas I get so many cards from them all it's lovely to keep in touch."

O Williams, Host Mother



"I'm having a work experience as a Finance Assistant. My trainers and workmates are very friendly, they are teaching me a lot of things and it is very good for my career progression. Also I have met people from other nationalities and I'm making good friends. Making contact with TTPL was the right decision. I'm improving my English, my interpersonal skills and my knowledge."

Carmen, Spain

GET IN TOUCH

Develop your perfect programme today and get in touch to find out more

We hope you have found a programme for you.

As one of the largest and most successful training and work placement companies in the UK, there just isn't enough space to explain the full range of programmes and work placements we are able to offer.

And of course these programmes are just the start. We work with you to develop a programme that best fulfils your personal objectives.

We have been creating wonderful programmes for 20 years and have a reputation as one of the very best companies in the industry.

We are proud of the quality of our programmes, the support we provide participants and the social programmes we offer.

Check out the latest positive feedback at www.ttpl-uk.com or see what is going on right now with our trainees on our Facebook page www.facebook.com/ttpl.torquay

To get in touch, email info@ttpl-uk.com to tell us about your individual requirements.

Or go to www.ttpl-uk.com and complete the enquiry form and send us your details.

We are happy to consider all requests and have many contacts, so, if on the rare occasion we cannot help, we will do our best to connect you to an organisation that can.

Thanks – and we look forward to hearing from you very soon!



Training Partnership trainees go on to...

- Work for top brands like Nestle, Price Waterhouse and Easyjet
- Progress to higher education courses, Masters Degrees and PHD
- Become entrepreneurs and start their own businesses
- Travel the world!



*"Probably the best
time of my life so far."*

Larissa, Germany



Torbay Innovation Centres
Lymington Road, Torquay
Devon TQ1 4BD

☎ Telephone +44 (0)1803 321210

✉ email info@ttpl-uk.com

www.ttpl-uk.com

  @TTPLuk



**The Training
Partnership**

discover who you are