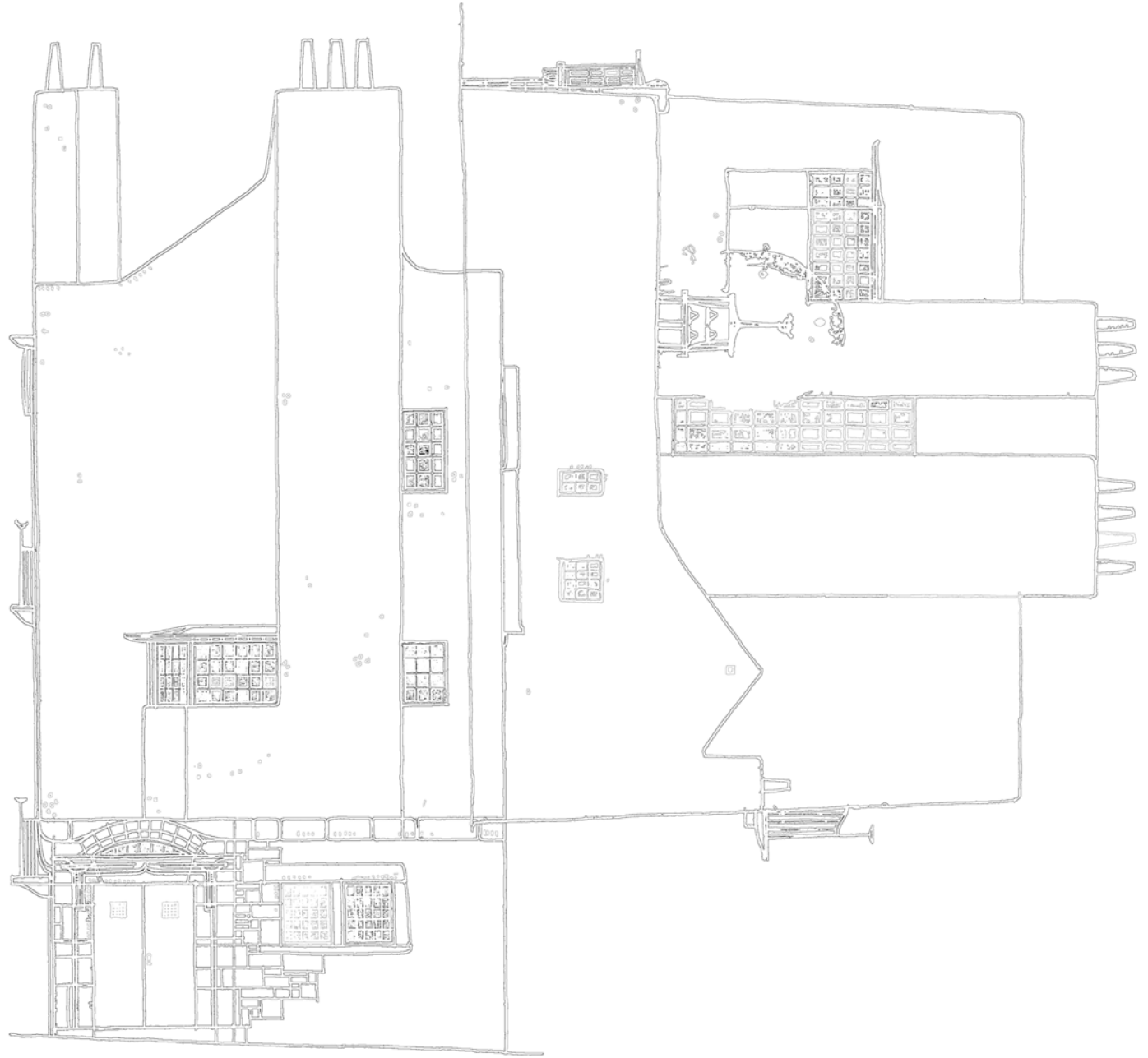


TWIN DWELLINGS OF SINGULAR INTEREST



CHARLES RENNIE MACKINTOSH SOCIETY™ ARCHITECTURAL COMPETITION 9

2

0

1

9

## BACKGROUND

Following the celebration of the 150<sup>th</sup> anniversary of Mackintosh's birth,

the Charles Rennie Mackintosh Society is launching an open, international architectural ideas competition.

Based on two hypothetical 'ideal' houses for artists, envisaged by Mackintosh in c.1900, the competition will invite participants to contribute designs for a contemporary pair of houses that explore variations on a theme.

Mackintosh's designs can be seen as a manifesto for the young architect, which he would later develop and realise at 'Windyhill' and 'The Hill House'. These designs show remarkably unadorned buildings with elemental abstracted forms where harling (roughcast) is used to unify the composition into a cohesive whole. It is clear to see that Mackintosh is experimenting with a vernacular construction technique in a contemporary manner, suggesting a quest for a new articulation of architecture by his own hand.

Given that the 'Artist's Town House and Studio' and its sister proposal "Artists House and Studio in the Country" were envisaged by Mackintosh just months prior to his marriage to Margaret Macdonald, they can be seen as a personal manifesto by the architect, imagining life with his muse. Indeed, when they were published in 1902, Hermann Muthesius remarked that the schemes '*refer to the home desired by the artist couple, and thus have a singular interest*'.

This competition will be an opportunity for participants to explore and evolve their own 'manifestos' of their architectural convictions, in a manner similar to that of Charles Rennie Mackintosh.

## THE CHARLES RENNIE MACKINTOSH SOCIETY

The Charles Rennie Mackintosh Society (hereafter CRM Society) is an independent, non-profit making charity, established in 1973 to promote and encourage awareness of the Scottish architect and designer, Charles Rennie Mackintosh. The Society has around 1000 members across the world with active affiliate groups arranging local events in, London and the SE, and Japan, and an associate group in Port Vendres.



CHARLES RENNIE MACKINTOSH  
AND HAMISH REID DAVIDSON  
© DOUGLAS ANNAN



MARGARET MACDONALD MACKINTOSH  
© DOUGLAS ANNAN

## THE COMPETITION

The competition seeks entries for contemporary reimaginings of Mackintosh's Ideal House for an artist couple. Entrants will be required to research Mackintosh's domestic designs as well as his work generally. However, submitted designs should reflect the requirements of modern contemporary life experienced in the 21st century.

## COMPETITION SPONSORS

The Charles Rennie Mackintosh Society is grateful to DSB Award for their generous contribution to the competition.

## COMPETITION CATEGORIES AND ELIGIBILITY

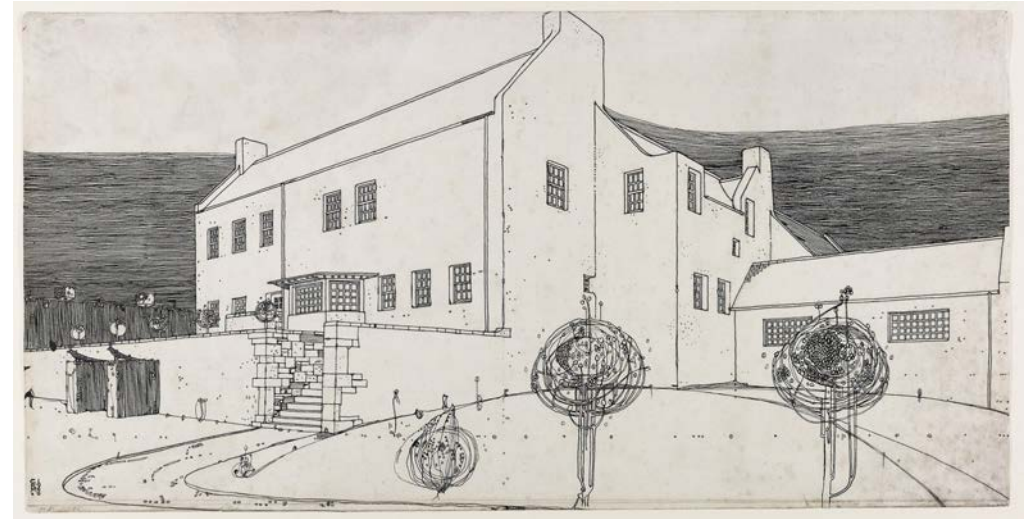
The Competition will be judged on two categories:

### STUDENT:

This category is open to all, individual or group (maximum of four) student entries for those who are currently studying architecture at ARB Part 1 (or equivalent) or ARB Part 2 (or equivalent). Eligibility criteria is limited to those currently studying or within 2 years of graduating from their Post-Graduate degrees.

### PRACTITIONER:

This category is open to all practitioners who can enter as individuals or in teams (maximum of four) or as architectural practices. Eligibility criteria is limited to those with 2 years or more since qualification.



WINDYHILL PERSPECTIVE DRAWING BY MACKINTOSH  
© THE GLASGOW SCHOOL OF ART ARCHIVES AND COLLECTIONS.

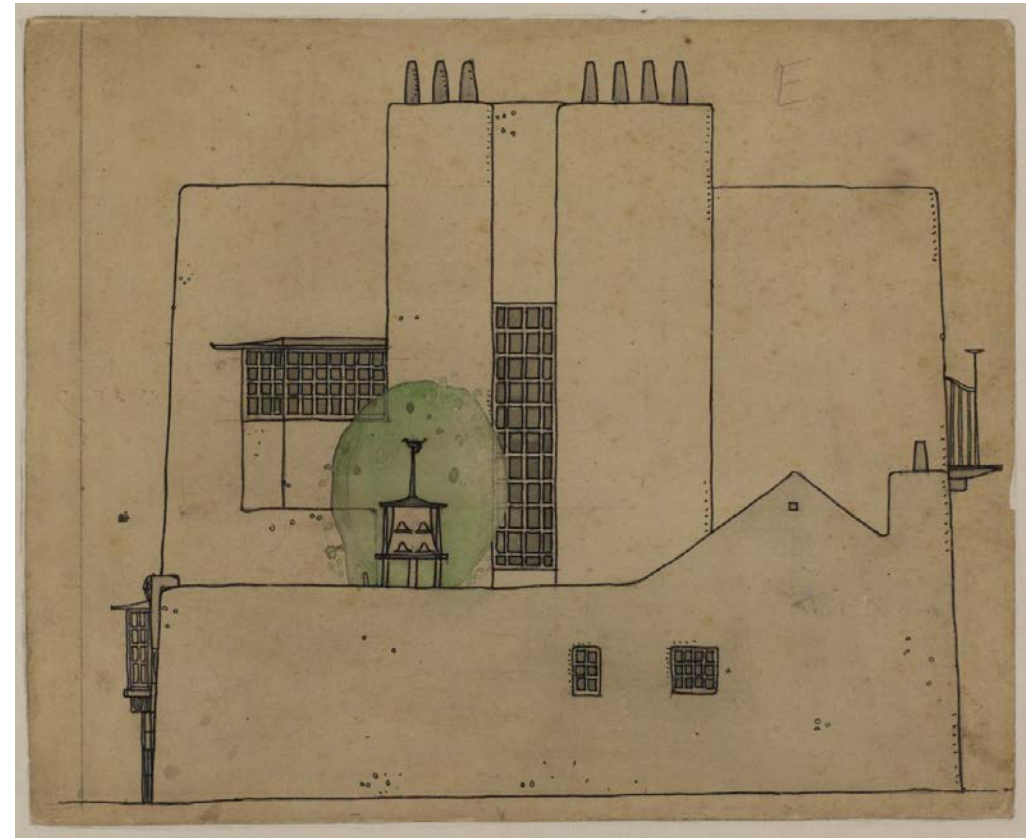


WINDYHILL IN 2019

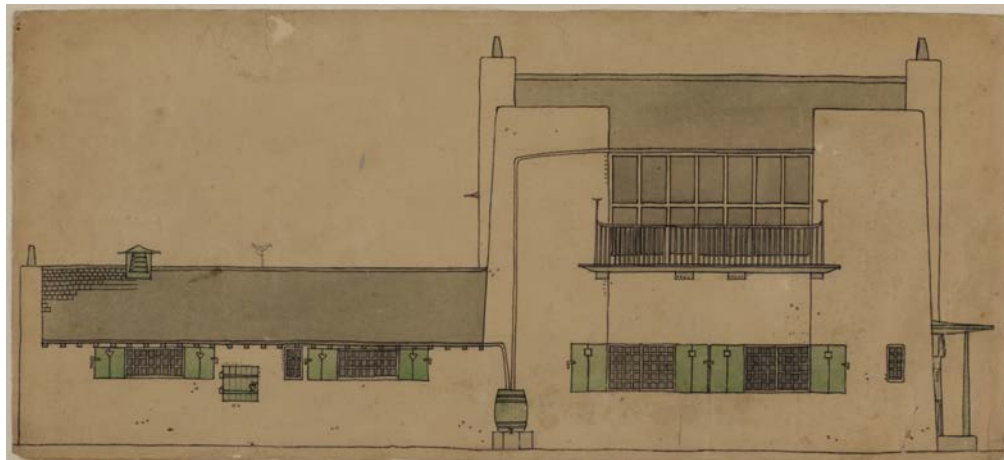
# DWELLING HOUSE IN THE COUNTRY

## DESIGN CRITERIA

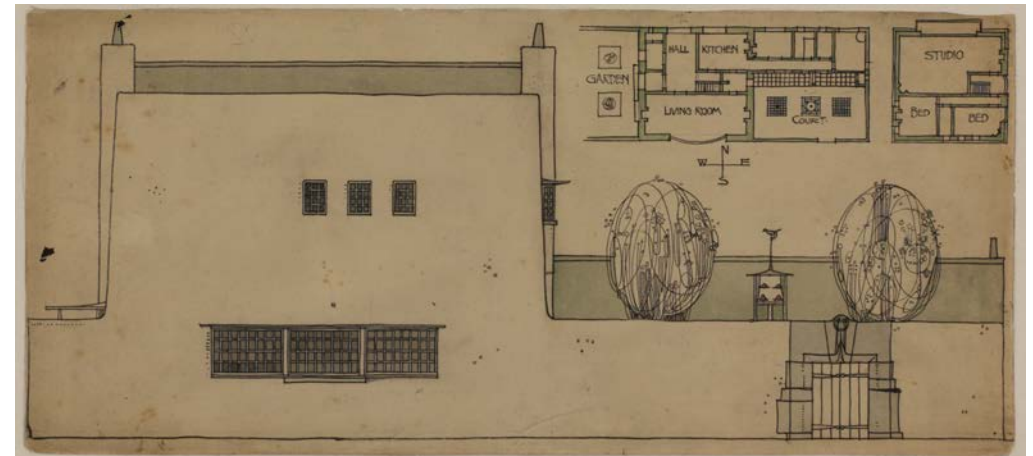
- The house must fit within the curtilage outlined in the site plan. There are 4 sites to choose from within the Knapps Loch at Kilmacolm, Scotland.
- The house must provide the basic provisions for contemporary living including:
  - A minimum of one single bedroom and one double master bedroom
  - Living area
  - Kitchen with utility areas
  - Dining area
  - Studio / workshop sufficient for two artists to practice
- Consideration should be given to a 'hearth' provided within the home, as well as space for the artist's library.
- Minimum internal floor area: 80m<sup>2</sup>
- Consideration should be given to landscaping and planting around the house. A designated garden area should be incorporated into proposals.
- Entrants are free to suggest additions to the brief as they see fit.



DESIGN FOR ARTIST'S HOUSE AND STUDIO IN THE COUNTRY (MACKINTOSH)  
© THE HUNTERIAN, UNIVERSITY OF GLASGOW, 2019



DESIGN FOR ARTIST'S HOUSE AND STUDIO IN THE COUNTRY (MACKINTOSH)  
© THE HUNTERIAN, UNIVERSITY OF GLASGOW, 2019



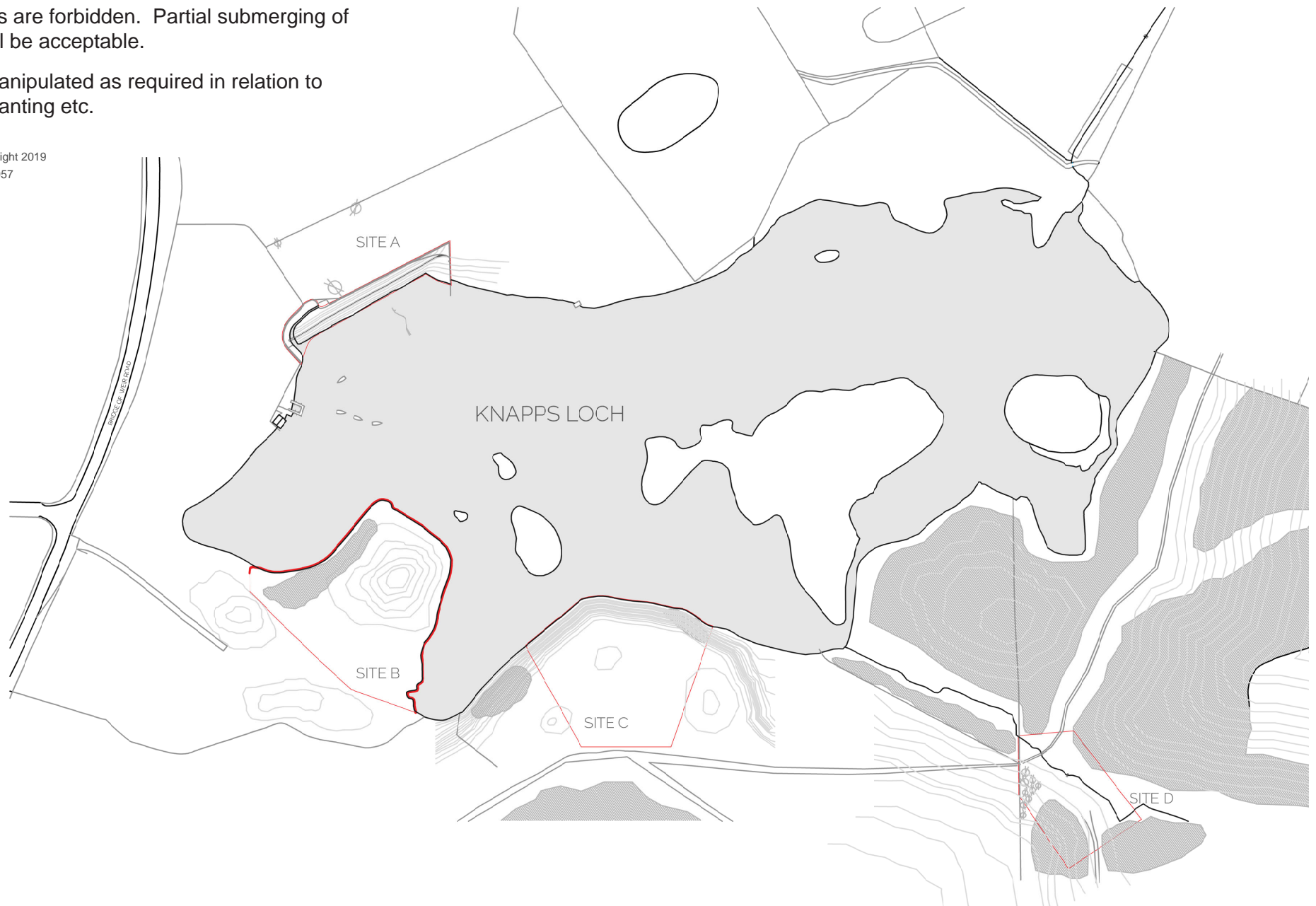
DESIGN FOR ARTIST'S HOUSE AND STUDIO IN THE COUNTRY (MACKINTOSH)  
© THE HUNTERIAN, UNIVERSITY OF GLASGOW, 2019

# DWELLING HOUSE IN THE COUNTRY

## SITE RESTRICTIONS

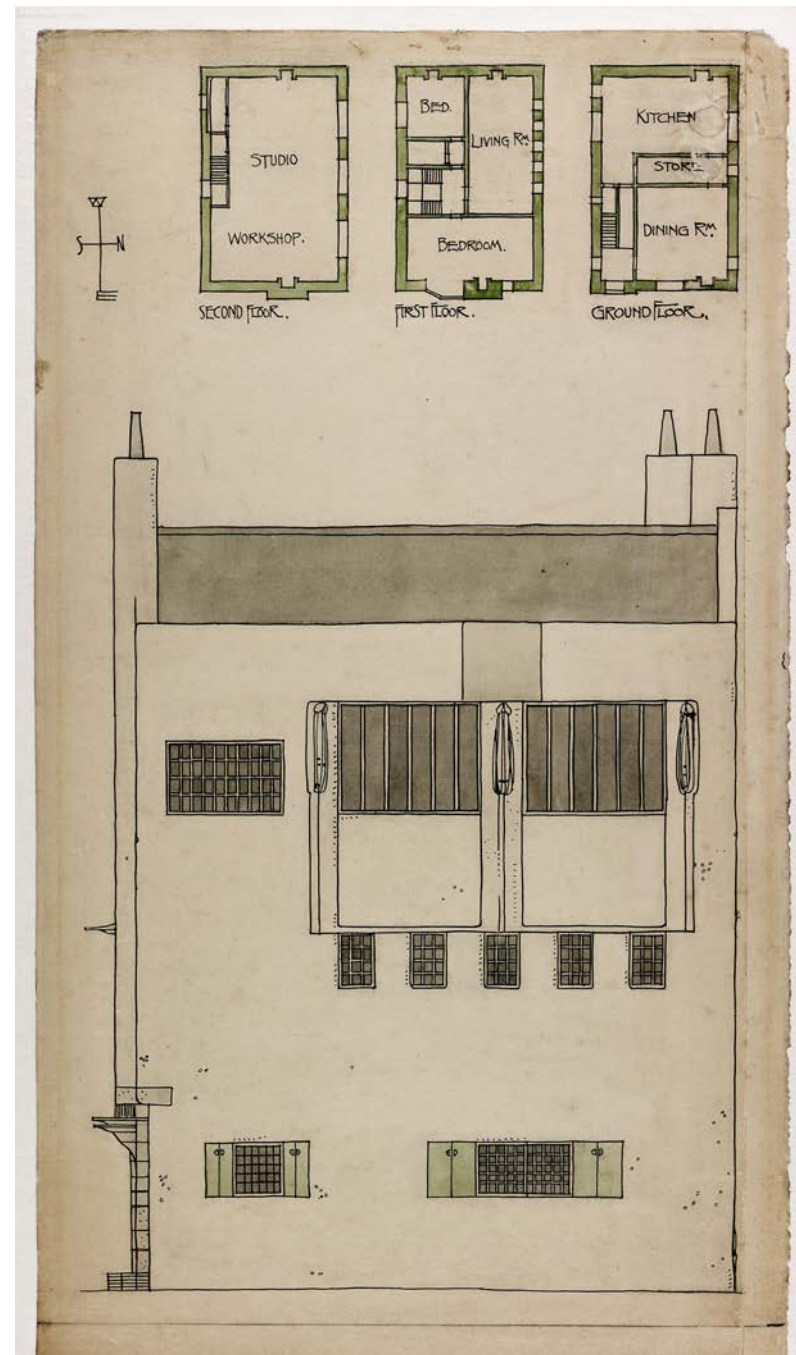
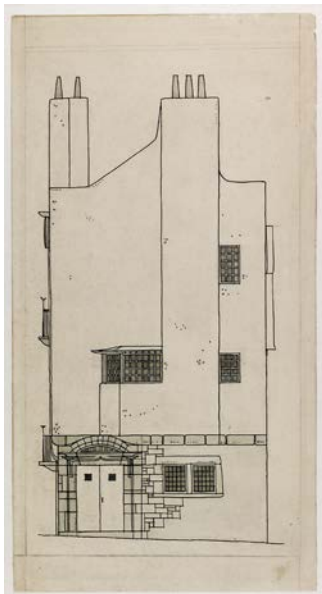
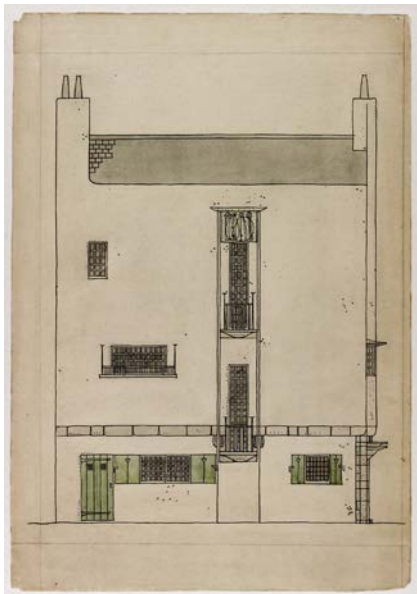
- Entrants must choose one site only.
- Full basements are forbidden. Partial submerging of lower levels will be acceptable.
- Sites can be manipulated as required in relation to topography / planting etc.

Serial number: 167076  
© Crown copyright and database right 2019  
Ordnance Survey licence 100048957



## DWELLING HOUSE IN THE TOWN DESIGN CRITERIA

- The house must fit within the curtilage outlined in the site plan.
- The house must provide the basic provisions for contemporary living including:
  - A minimum of one single bedroom and one double bedroom
  - Living area
  - Kitchen with utility areas
  - Dining area
  - Studio / workshop sufficient for two artists to practice
- Consideration should be given to a 'hearth' provided within the home, as well as space for the artist's library.
- Minimum internal floor area: 80m<sup>2</sup>
- Consideration should be given to landscaping / planting around the house as well as consideration to context / the street. A designated garden space should be considered.
- Entrants are free to suggest additions to the brief as they see fit.



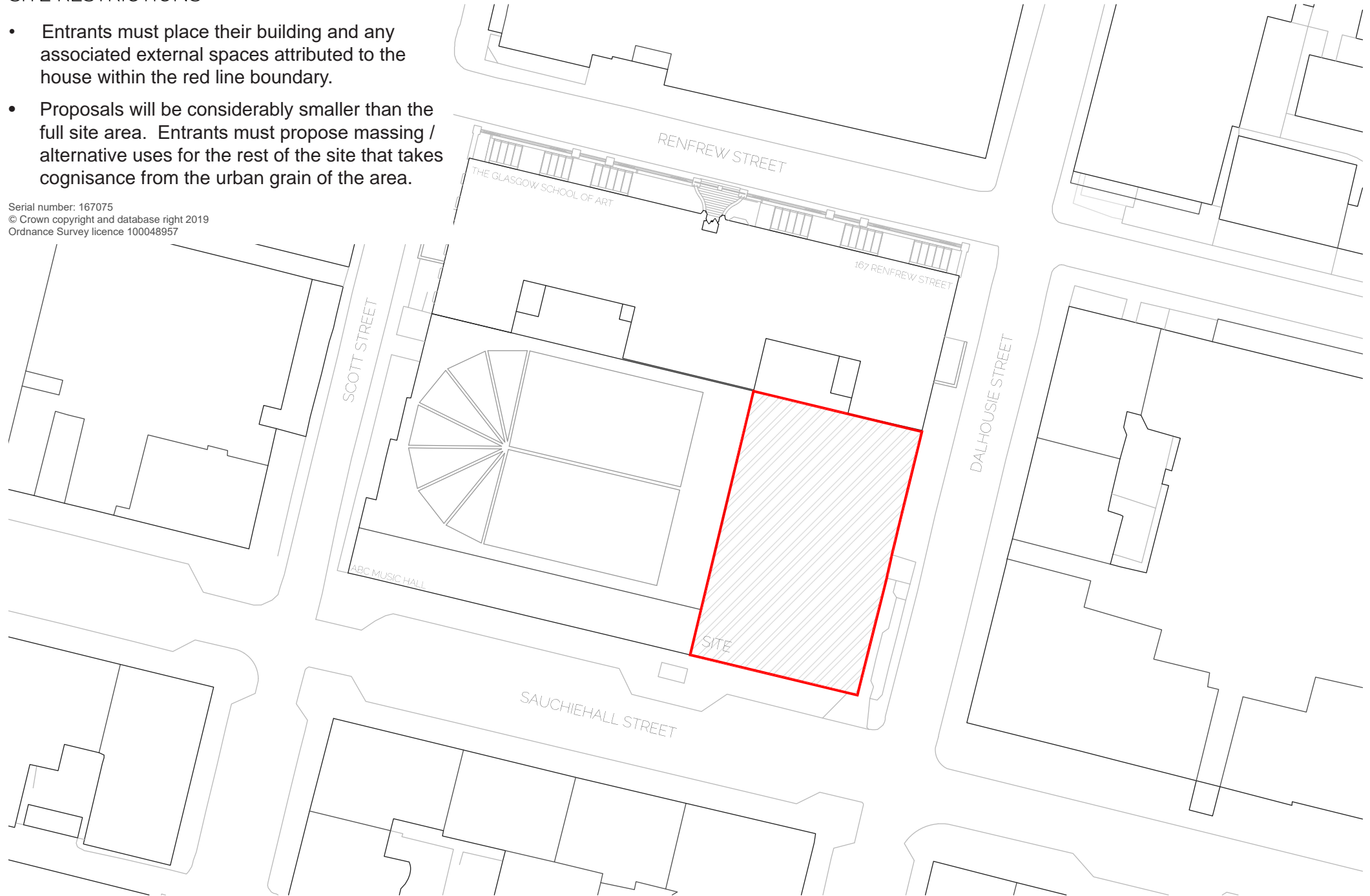
DESIGN FOR ARTIST'S HOUSE AND STUDIO IN THE  
TOWN (MACKINTOSH)  
© THE GLASGOW SCHOOL OF ART  
ARCHIVES AND COLLECTIONS

## DWELLING HOUSE IN THE TOWN SITE RESTRICTIONS

- Entrants must place their building and any associated external spaces attributed to the house within the red line boundary.
- Proposals will be considerably smaller than the full site area. Entrants must propose massing / alternative uses for the rest of the site that takes cognisance from the urban grain of the area.

Serial number: 167075  
© Crown copyright and database right 2019  
Ordnance Survey licence 100048957

0 5 10 15 20  
SCALE IN METRES @ 1:500



## SUBMISSION REQUIREMENTS

The judges will be analysing each entry based on the following criteria:

- Narrative
- Explanation of design consideration
- Response to Mackintosh's works.
- Overall project delight
- Response to the site
- Dialogue between two buildings on separate sites.

## ENTRY FORMATS

Participants are required to submit the following:

1 x 1:50 physical model – material at participant discretion  
2 x A1 landscape competition board – mounted on 5mm foam backing containing key drawings: Site Plan: 1:500/ 1:200, Plan (1:50 minimum), Elevations (1:100 minimum) and two key Sections (1:50 minimum) as well as explanatory drawings and concise texts.

## ENTRY SUBMISSION

All entrants to submit 1nr A1 board per house (2nr total). Entrants to submit min. 1nr 1:50 physical model of either house, sufficient to demonstrate concept. All entries must include completed entry form.

## ENTRY CONDITIONS

With the agreement of participants, the Society wishes to hold an open auction of the physical models to raise funds for the Society.

## IDENTIFICATION

There must be no identifiable features disclaiming names of participants on entry submissions. Any such identifiable work will be disqualified. However, each entry must be marked clearly and with a unique reference number consisting of 10 alphanumeric characters consisting of 3 letters and 7 numerals arranged at random. This number must be on each submission as well as on physical models.

## ENTRY FEE

Entry fees are as follows:

Student category:	Early Bird discount	£25
	Regular fee	£35
Practitioner category:	Early Bird discount	£45
	Regular fee	£55

Payment can be made at Mackintosh Queen's Cross or by phoning the Society on +44 141 946 6600 or email [info@crmsociety.com](mailto:info@crmsociety.com). Please quote team ID and submit entry form (one per team) at time of payment.

## PRIZES

In each of the student and practitioner categories, the prizes will be as follows:

1st Prize - £900      2nd Prize - £450      3rd Prize £150

Each category will also include honourable mentions.

In addition - all entrants to the competition will be automatically eligible to one year's free membership of the Charles Rennie Mackintosh Society (usually £20/ year (students) and £42/ year (individuals). This includes a copy of the Society Journal.

All entrants who sign up on the early-bird tariff will also be allocated tickets (max 2 tickets per team) to the keynote lecture and announcement of the awards.

## JURY

The full competition jury will be announced by the CRM Society shortly.

## DSB AWARD

The CRM Society is thankful to DSB for their generous support toward this competition and award.



## COMPETITION TIMELINE

Announcement of competition	1 <sup>st</sup> August 2019
Early bird discount	23 <sup>th</sup> August 2019
Registration Deadline	15 <sup>th</sup> November 2019
Deadline for Questions –	8 <sup>th</sup> November 2019
Entries received by –	15 <sup>th</sup> November 2019
Judging –	18- 29 <sup>th</sup> November 2019
Keynote lecture and Awards night –	end November 2019 (provisional)
Exhibition –	December 2019 / January 2020
Auction of Models –	provisional date 25 <sup>th</sup> January 2020

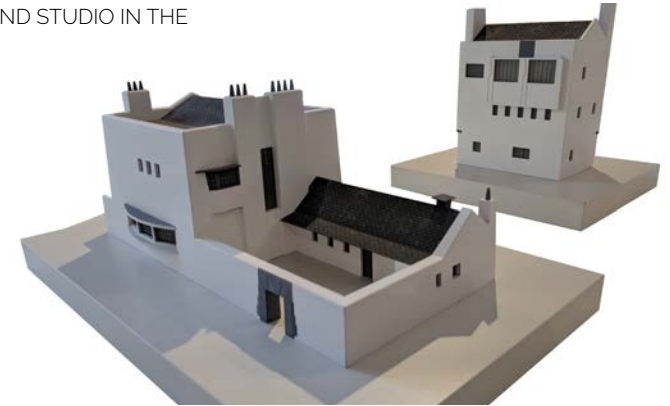
## EXHIBITION AND AUCTION

All entrants will be part of an exhibition that will be hosted at Mackintosh Queen's Cross. At the conclusion of the exhibition, there will be an auction of models. This auction is to raise funds for the Society. Participants can withdraw their models from the auction without prejudice.

## TERMS & CONDITIONS

- The Participants are required to ensure that models and boards are adequately protected during transport. The CRM Society will not be liable for damage or loss of participants entries. The Society will not be liable for return of materials or models.
- Copyright of designs remains with the entrant, although by entering this competition entrants give express consent to the CRM Society to reproduce entries.
- Contacting the jury regarding the competition is prohibited.
- Entries must be formulated in English.

DESIGN FOR ARTIST'S HOUSE AND STUDIO IN THE TOWN (MACKINTOSH)  
MODEL REPRODUCTIONS



WINDYHILL, MASTER BEDROOM



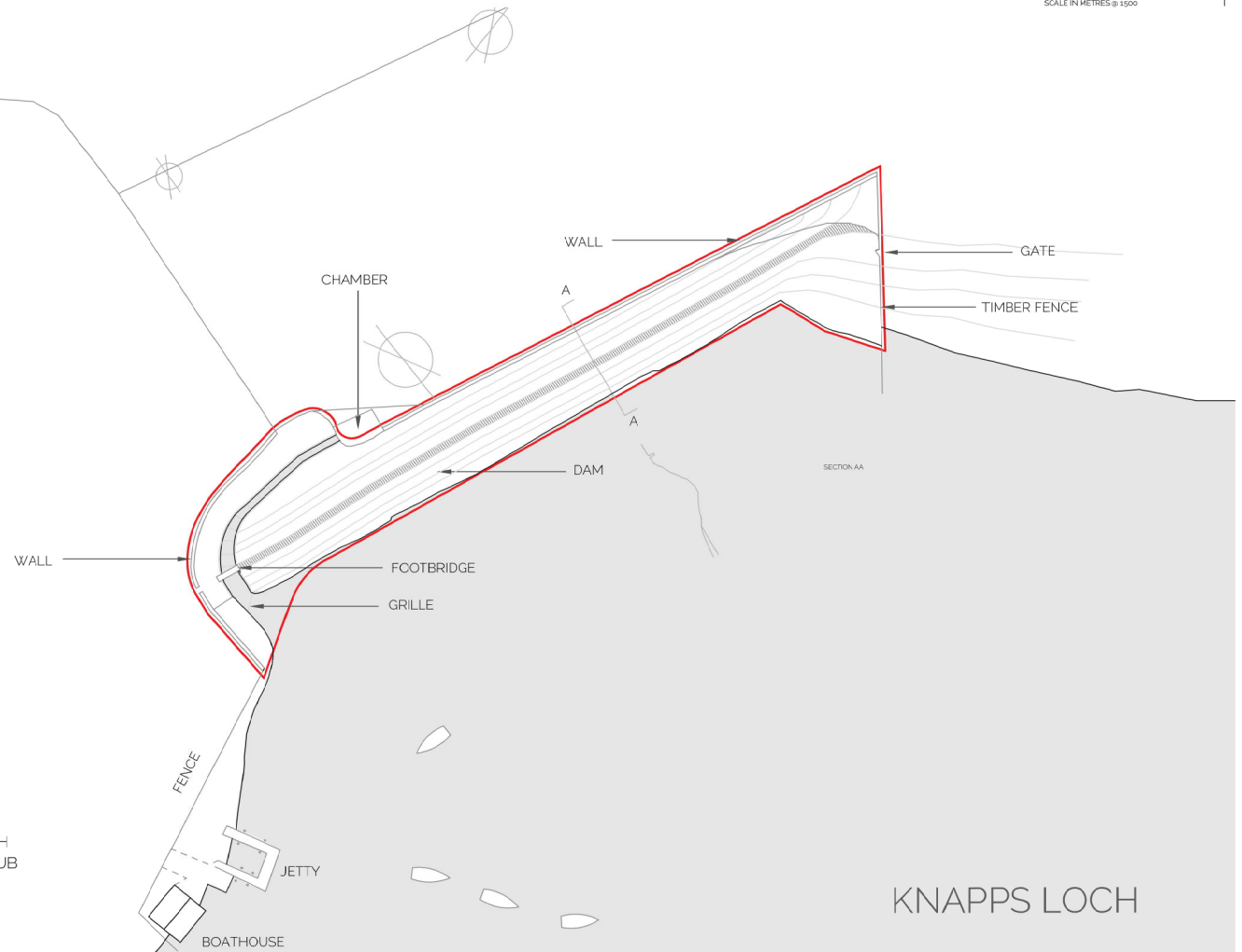
APPENDICES  
 APPENDIX 1 - SITE A (HOUSE IN THE COUNTRY)



HOUSE IN THE COUNTRY  
 SITE A



KNAPPS LOCH  
 ANGLING CLUB

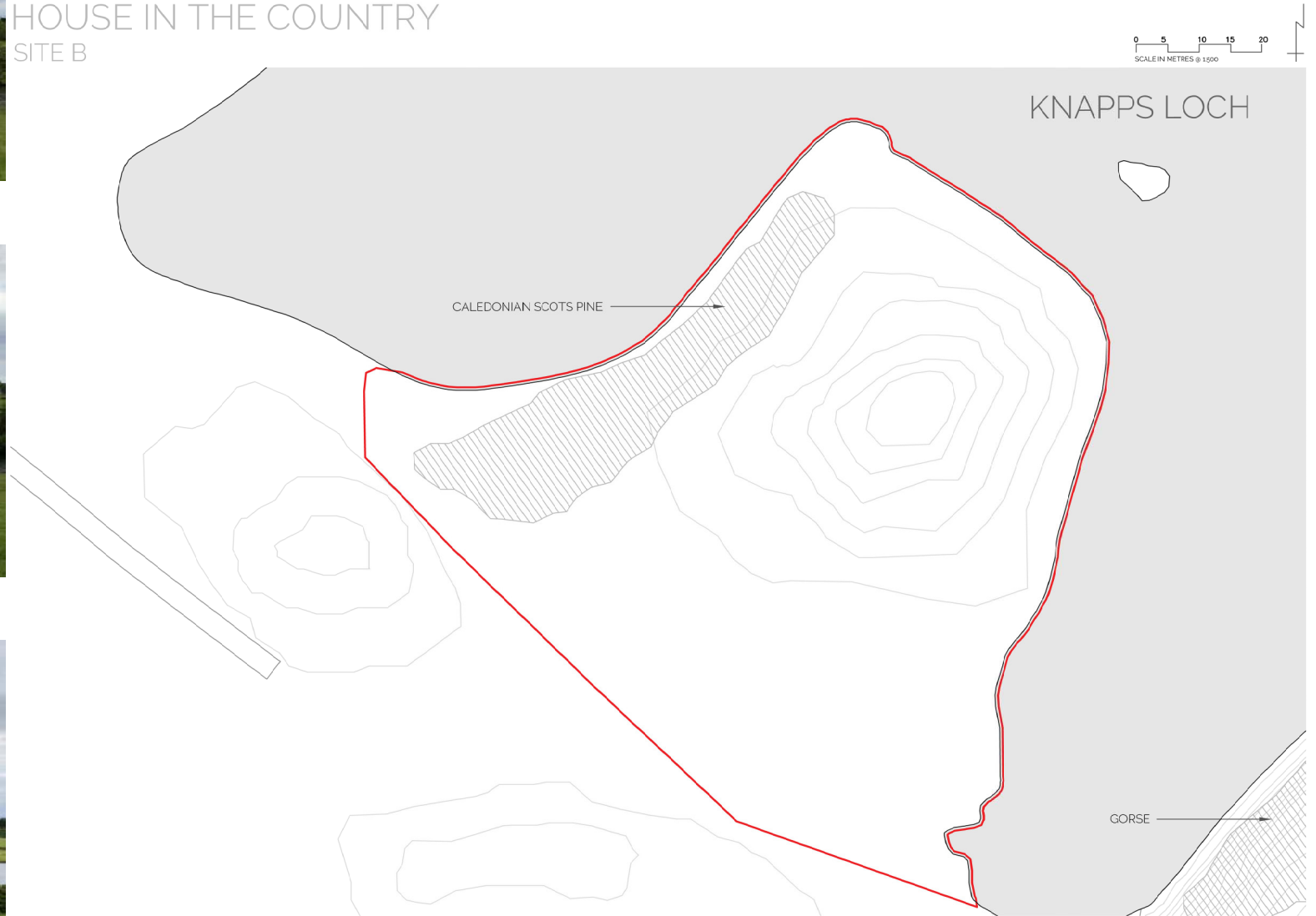


KNAPPS LOCH

APPENDICES  
APPENDIX 2 - SITE B (HOUSE IN THE COUNTRY)



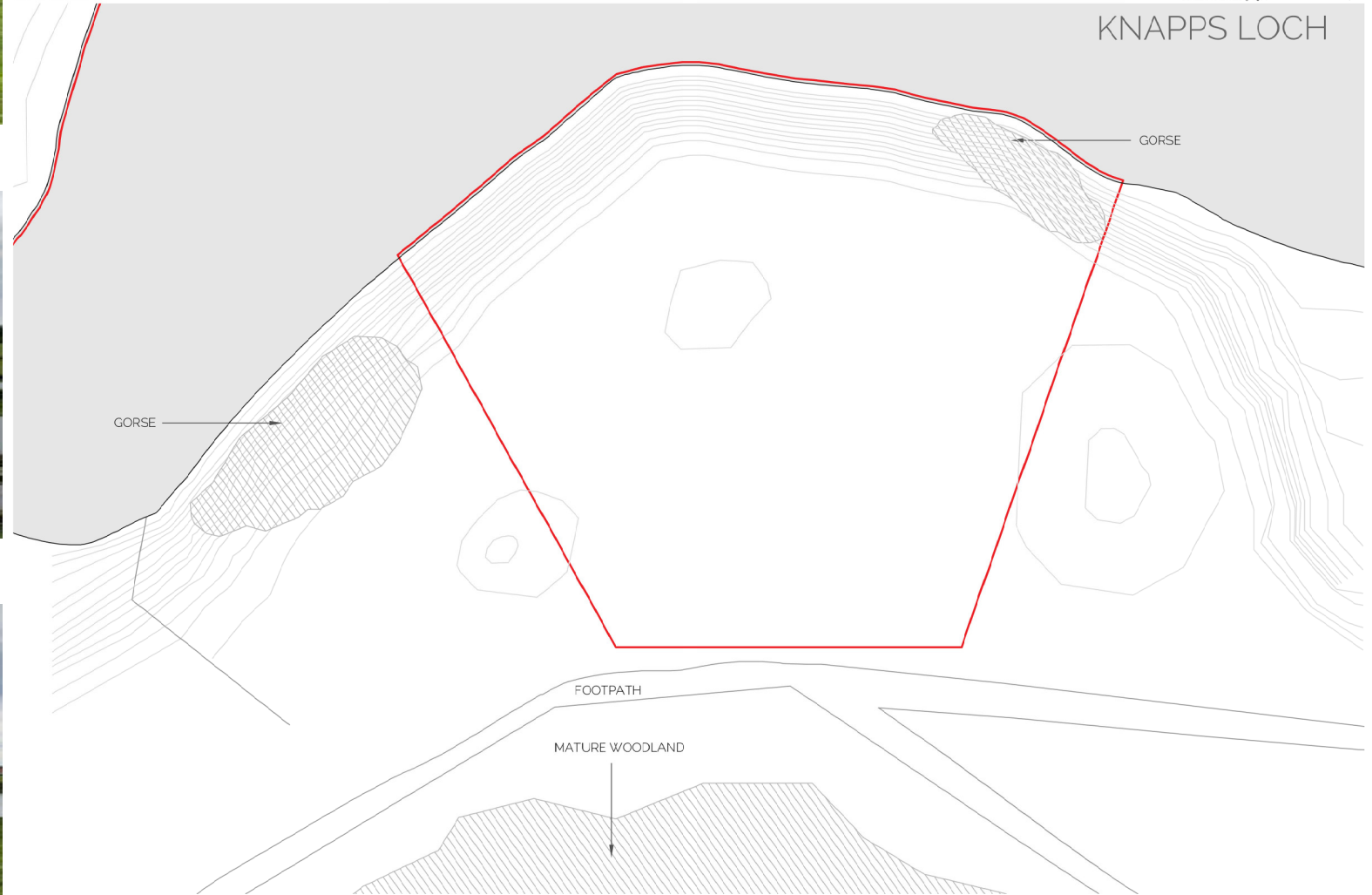
HOUSE IN THE COUNTRY  
SITE B



APPENDICES  
APPENDIX 3 - SITE C (HOUSE IN THE COUNTRY)



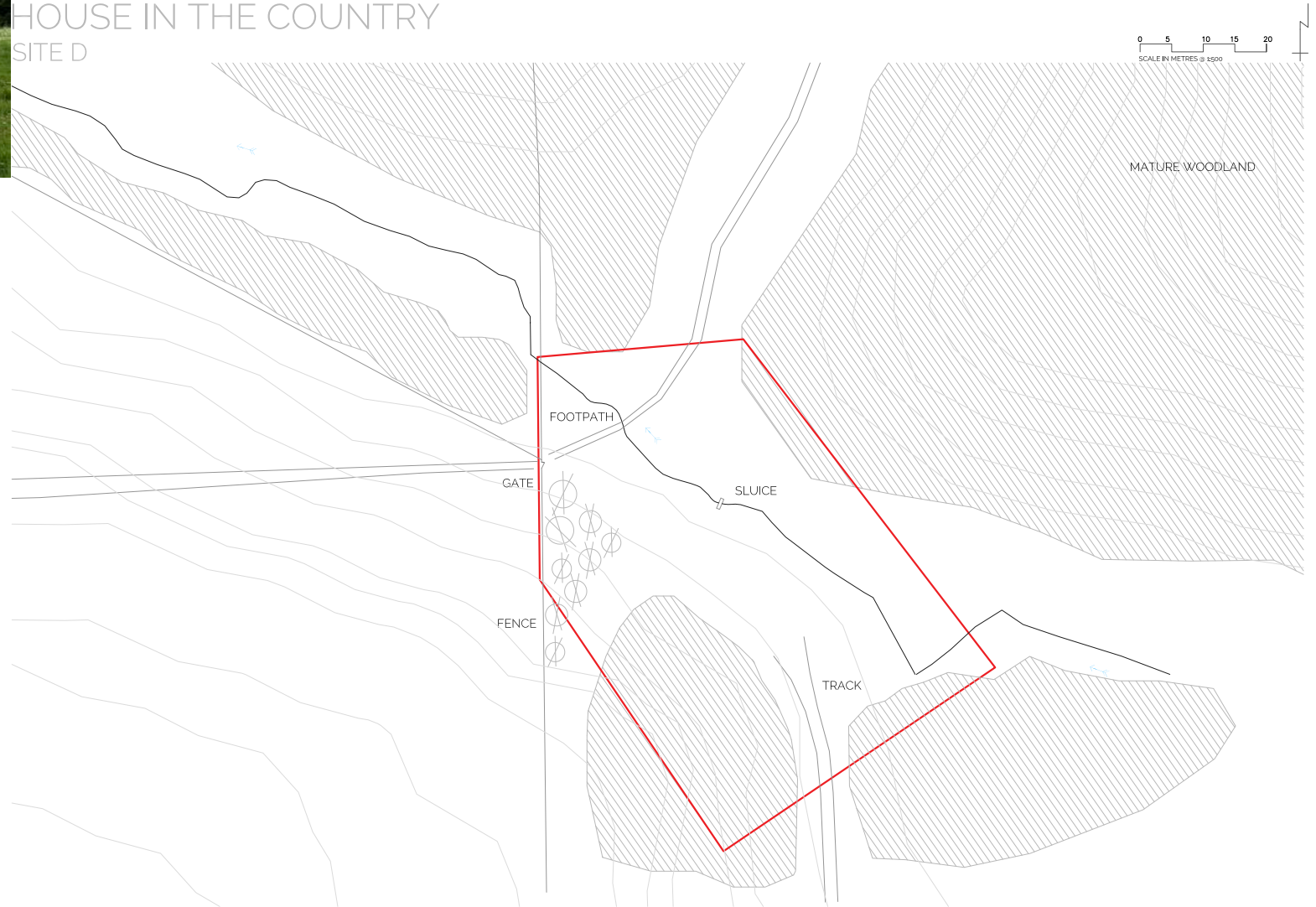
HOUSE IN THE COUNTRY  
SITE C



APPENDICES  
APPENDIX 4 - SITE D (HOUSE IN THE COUNTRY)



HOUSE IN THE COUNTRY  
SITE D



APPENDICES  
APPENDIX 5 - HOUSE IN THE TOWN



HOUSE IN THE TOWN

