



eran industrial.

New Product Development

INTRODUCTION

Eran Industrial is a wholly owned subsidiary of the Eran Group and was formed in 2000. Its roots go back to the early 80's with Eran Plastics, one of the highly successful component manufacturer who specialized in supplying lenses, refractors, and globes to the lighting industry. Eran Industrial specializes in designing, engineering, manufacturing, and distributing state-of-the-art lighting fixtures.

Here at Eran Industrial, we care about our products, but in reality we care about how our valued customers feel about our products. To do this, we draw on a wide pool of resources to ensure our costumers get nothing but the best.

750K

Thousand square feet of manufacturing floor space across four company-owned facilities.

500

Full-time employees worldwide.

45

Full-time designers & engineers.

30

Countries to which we sell and ship goods.

12

Fortune 500 OEM's for whom we design, produce & supply with goods.

1

Vertically integrated company who is diverse enough to competitively design, engineer, produce, distribute and finance any of your products.

TURNKEY PRODUCT DEVELOPMENT.

Eran Industrial is far more than a custom manufacturer, we provide complete turnkey new product development services for our customers. We can be involved as little or as much as you desire in your new product development cycle. As our designers and engineers have been involved with our factories for many years they can often incorporate cost-saving designs and processes to make the production of your custom product as economical as possible.

Rely on our 45+ engineers, designers and technicians from over four continents to help with, or completely run, your next new product development project. We have experts on hand who specialize in electrical, mechanical, solid state electronics, thermal management, processes, materials, quality control and a host of other disciplines. Depending on the complexity of your project we can often go from a design concept scribbled on a napkin to actually delivering your product in 90-180 days.



THE DESIGN CYCLE

ON RECEIVING THE INITIAL CONCEPT, SKETCH, AND DESIRED SPECIFICATIONS FROM OUR CUSTOMER, THE DESIGN BEGINS.

Product Design: From initial sketches to comprehensive 3D modeling and rendering.

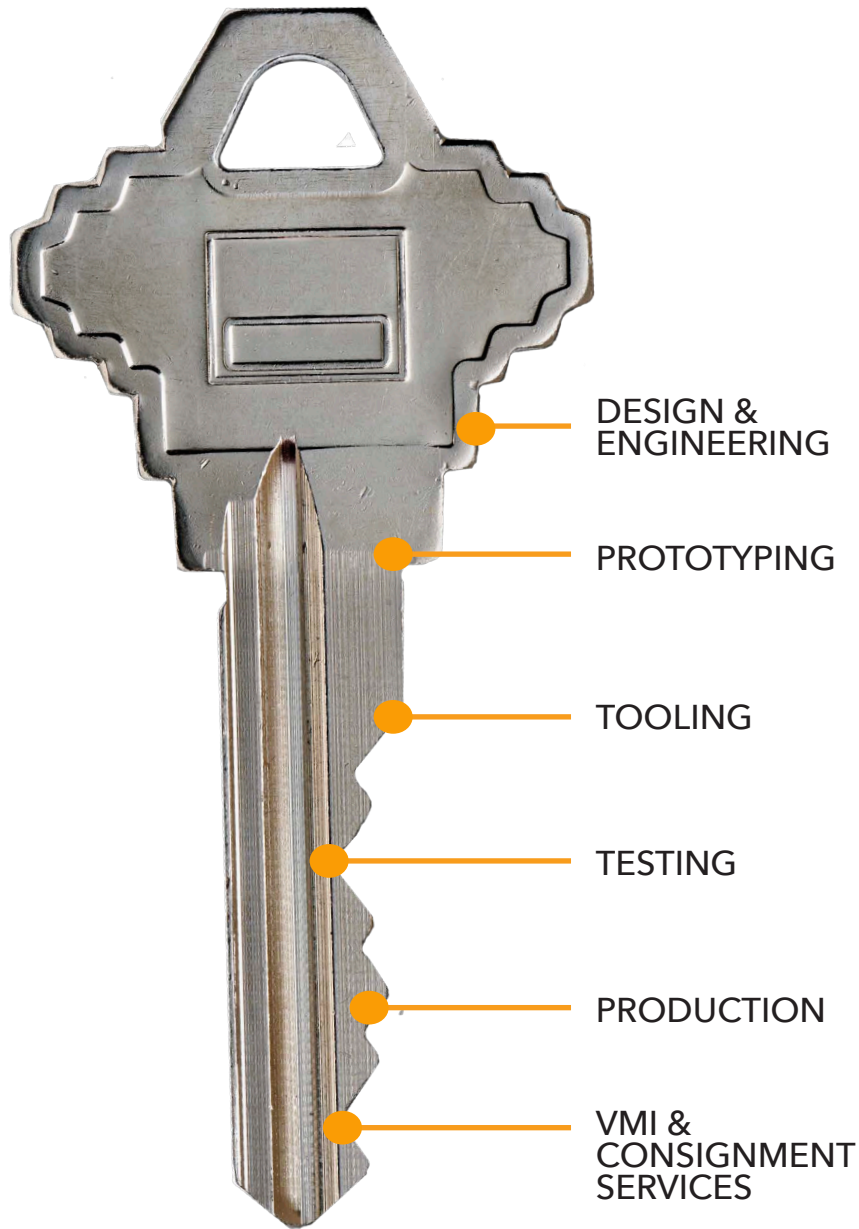
Engineering: Spectrum of services from Electrical to Mechanical, to Optical and photometric engineering.

Prototyping: Full size CNC prototype allows for design validation before tooling. Many years of experience in prototyping for one-offs for customer approvals.

Tooling: Extensive experience in creating tools in our in-house facility for a number of processes and materials including Die cast aluminum, stamping, punching, plastic injection molding, extrusions, blow molding, and thermoforming. NPD works directly with tool maker to make sure design output matches design intent.

Quality and Production Engineering: We can and do provide a comprehensive quality and production engineering plan to ensure production is the most economically feasible while maintain planned and documented quality standards.

Testing and Certification: The equipment and trained personal for any conceivable testing or certification in the lighting and industrial equipment industries.



01

Economy Marine Vapor-Proof Light Family

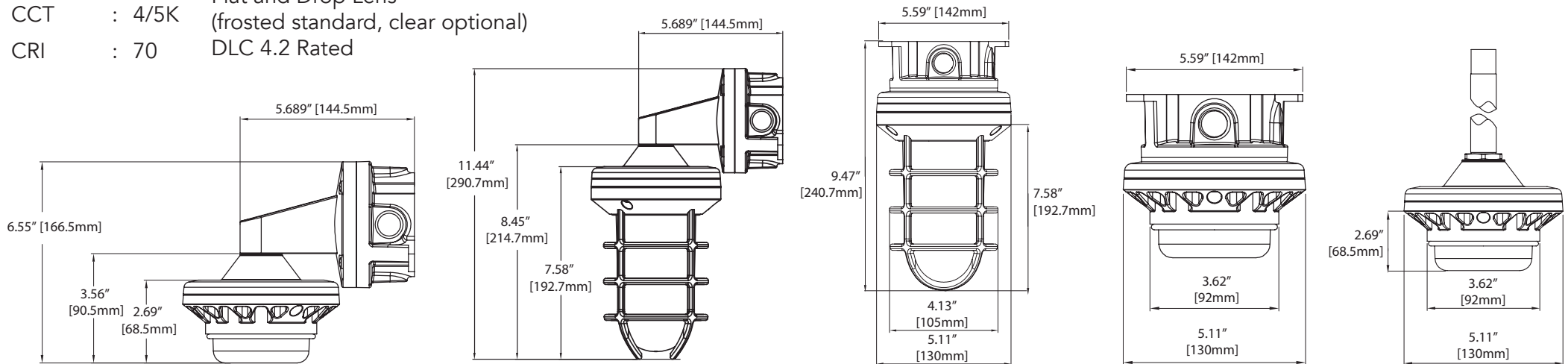


SPECS

LUMENS : 1400
WATTS : 14
CCT : 4/5K
CRI : 70

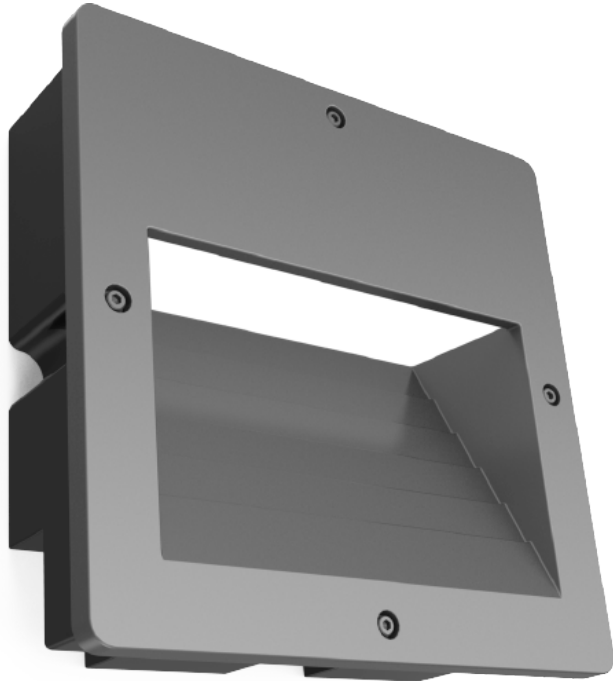
FEATURES

Polycarbonate construction
Wall, Pendant & Ceiling Mount
Flat and Drop Lens
(frosted standard, clear optional)
DLC 4.2 Rated



02

Recessed Flush Wall Light

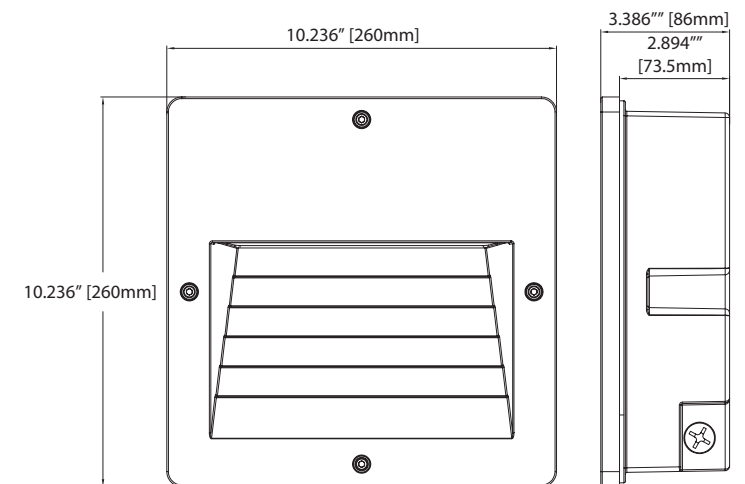
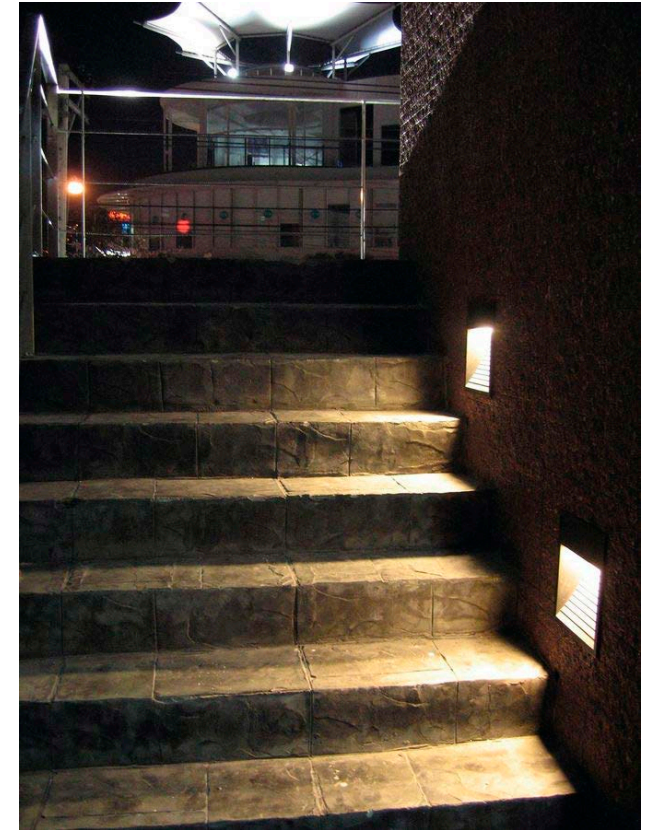


SPECS

LUMENS : 2000
WATTS : 30
CCT : 3/4/5K
CRI : 70

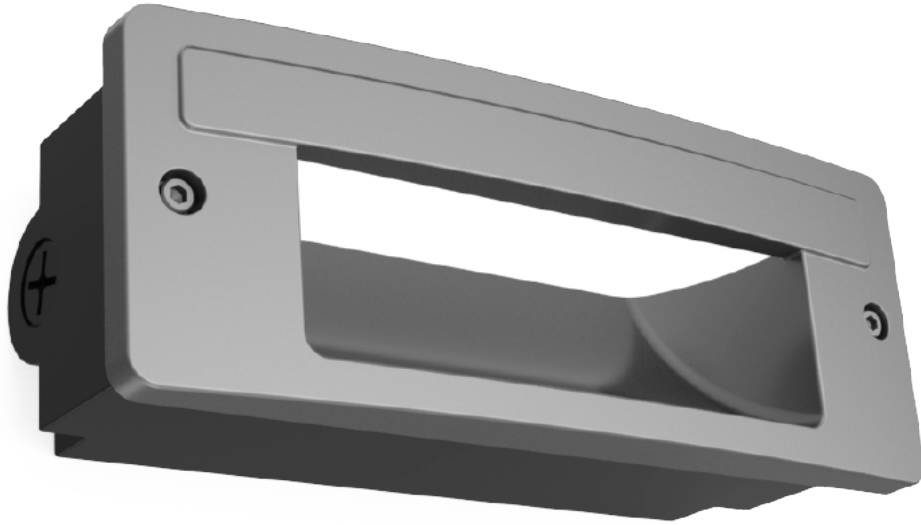
FEATURES

Aluminum construction
Mounts recessed in wall
Optional 347-480V
Conduit Entries
Easy install



03

Recessed Step Light



SPECS

LUMENS : 700

WATTS : 12

CCT : 3/4/5K

CRI : 70

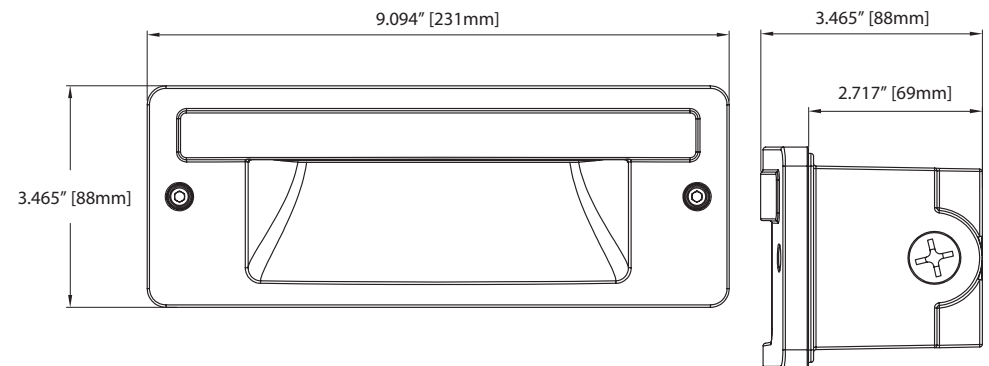
FEATURES

Aluminum construction

Mounts recessed in surface

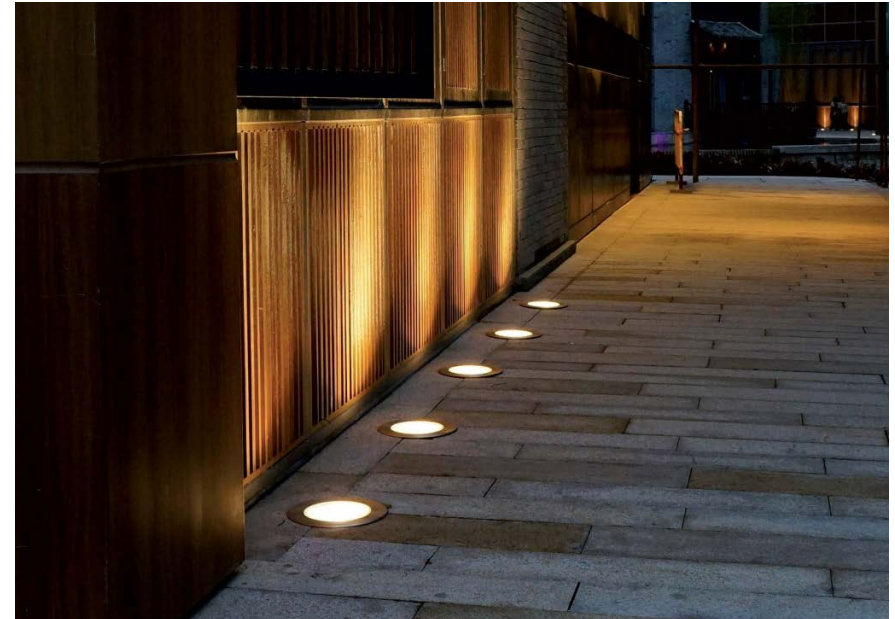
Conduit Entries

Easy install



04

In-ground Light



SPECS

LUMENS : 1000

WATTS : 20

CCT : 3/4/5K

CRI : 70

FEATURES

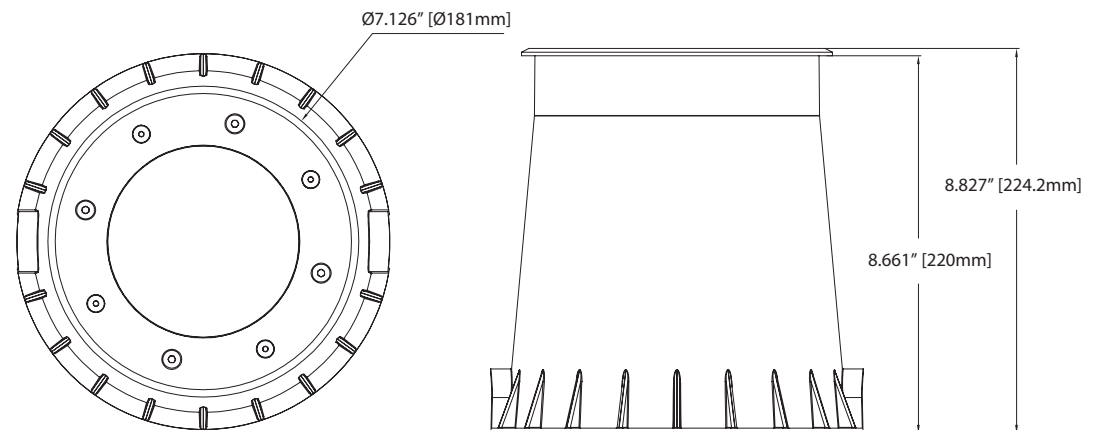
Aluminum construction

Ball & Socket Adjustable Light Head

Conduit Entries

347-480V Optional

IP66



05

Bullet Lights



SPECS

LUMENS : 1500 (15W)
2500 (25W)

WATTS : 15/25

CCT : 3/4/5K

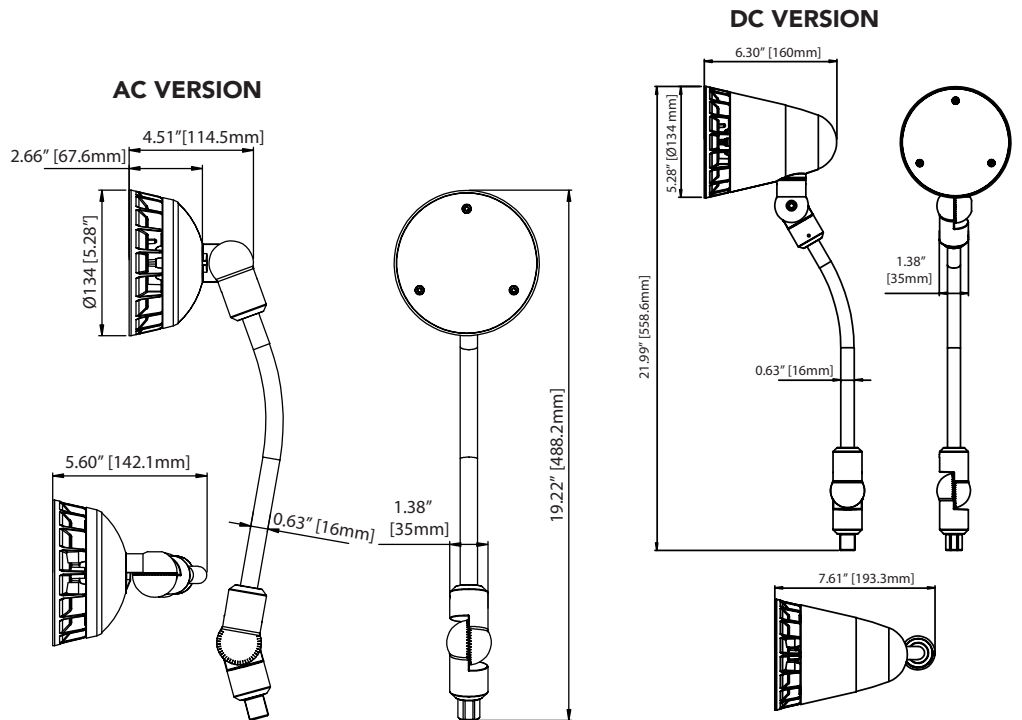
CRI : 70

FEATURES

20° & 40° Optics

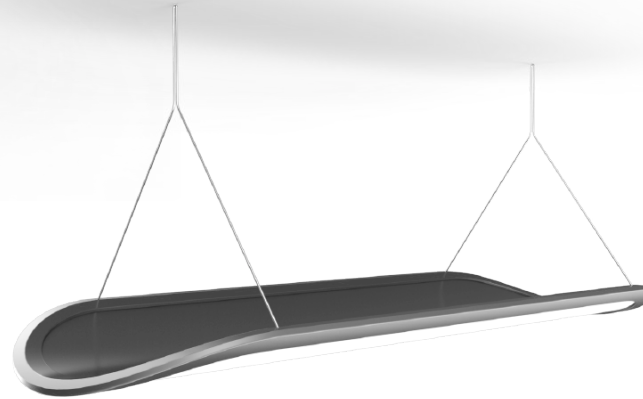
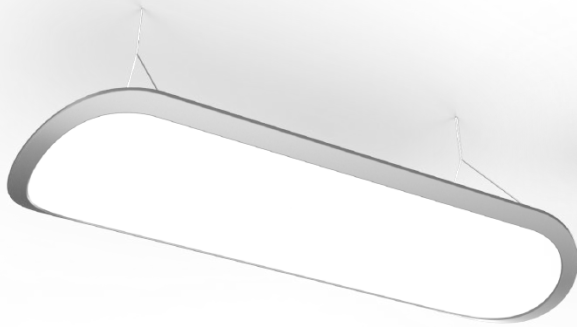
IP65

DLC 4.2



06

Edge-Lit Pendant Light



SPECS

LUMENS : 3000

WATTS : 30

CCT : 3/4/5K

CRI : 80

FEATURES

4 ft

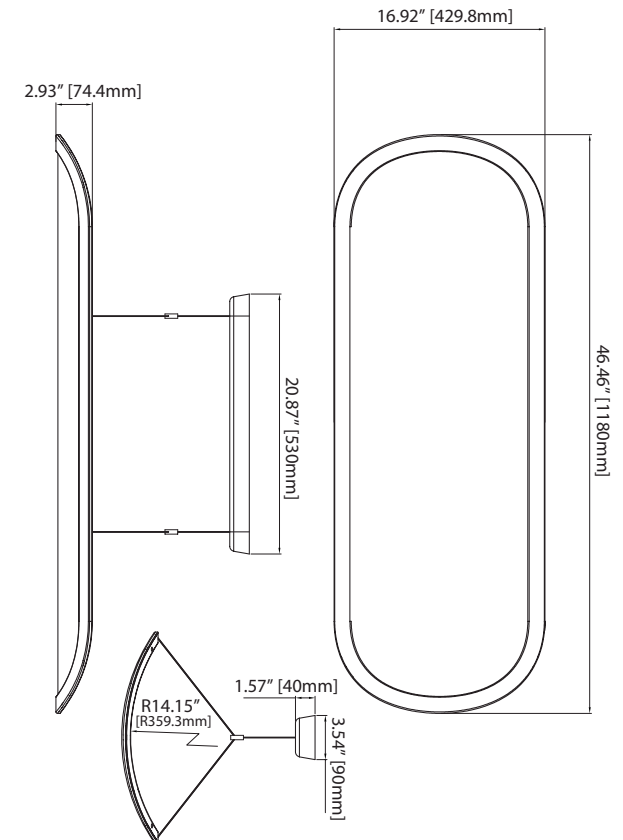
Pendant Mount

Mount "Curve Down" or Inverse "Curve Up" (TBA 1 or 2 SKUs)

347-480V Optional

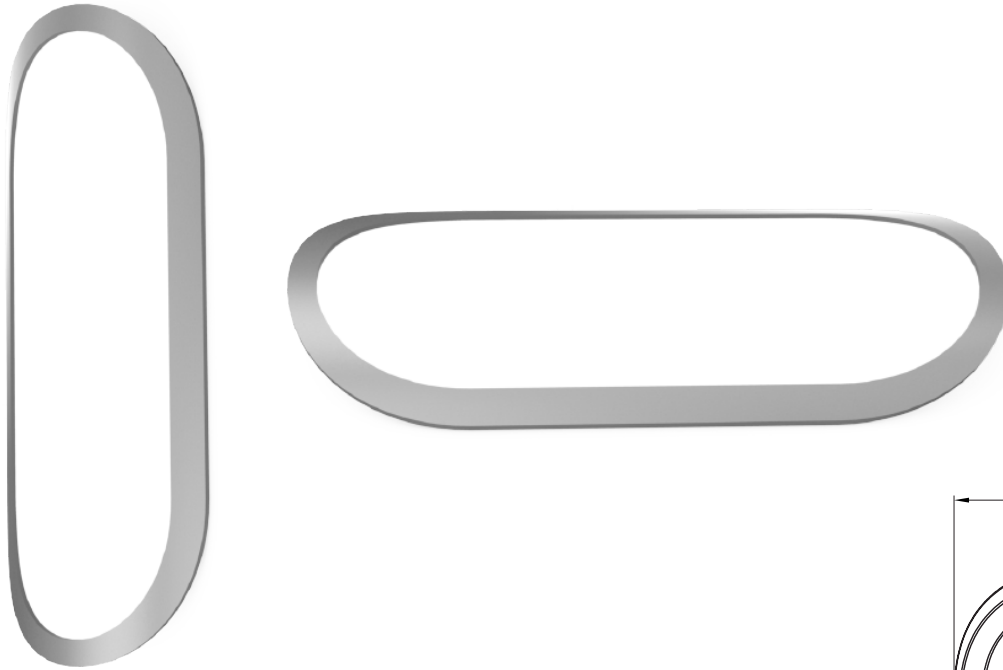
Dimming Optional

Optional Up-Lighting



07

Outdoor/Indoor Edge-Lit Sconce & Flush Ceiling



SPECS

LUMENS : 1500

WATTS : 15

CCT : 3/4/5K

CRI : 80

FEATURES

18" Sconce / Ceiling Light

Wall Mount, Flush Ceiling Mount

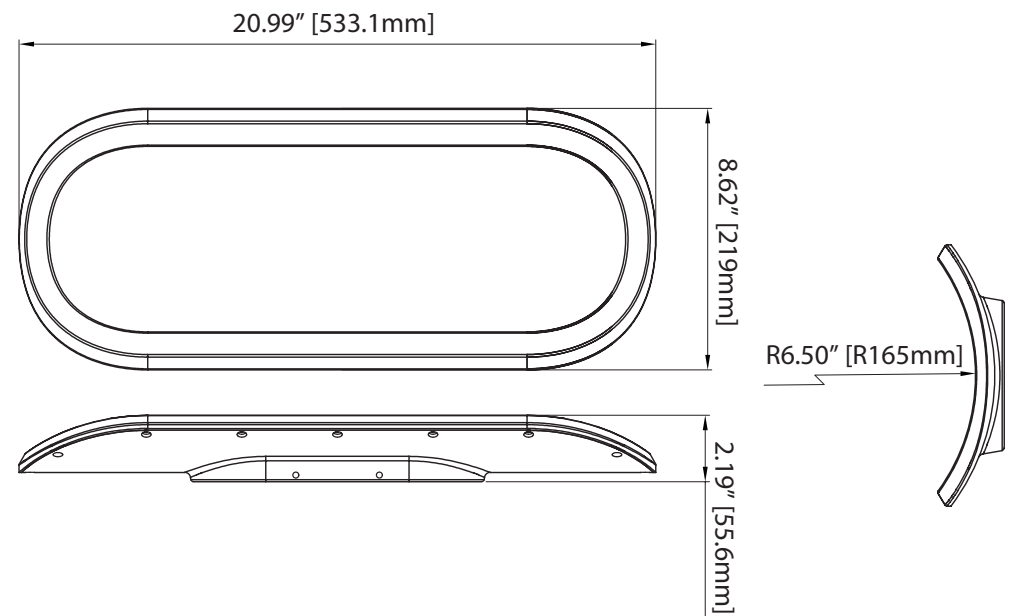
Mount to flat ceiling or drop ceiling (same SKU)

Mount "Concave" or Inverse "Convex" (TBA, 2 SKUS)

Outdoor rated (IP TBA)

347-480V Optional

Dimming Optional



CONTACT US

For any inquiries, please contact us at the following:

Email

sales@eranindustrial.com

USA Office

3500 Boca Raton Blvd. Suite 717
Boca Raton, Florida 33431

China Office

17/F Guangbo Mansion
#1357 Yinxian Ave.
Ningbo, China 31500

1.844.411.LITE (5483)

www.eranindustrial.com