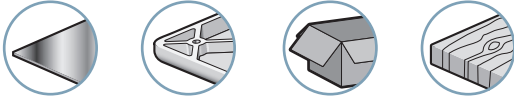


Branch-specific applications



Advantages

- Integrated electric vacuum control
- Can be adapted to all branches
- Optimized performance for handling all types of objects
- Reduced wiring and easy-to-use
- Modular design thanks to the different options
- Light and compact
- No clogging thanks to the through type silencer
- Silent operation

Description

GVPS series vacuum pumps control vacuum generation using an integrated valve. This installation simplifies wiring and reduces vacuum pump response times. The valve is electrically controlled (24 V DC).

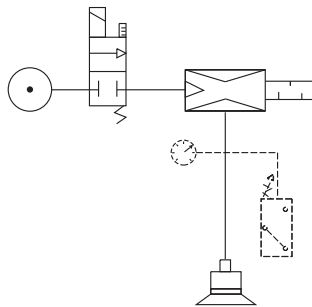
Characteristics

model	Ø nozzle (mm)	air consumed (Nl/min)	maximum vacuum (%)			air drawn in (Nl/min)		
			X	T	N	X	T	N
GVPS 12	1.2	67	40	75	90	150	63	45
GVPS 15	1.5	100	50	75	90	180	95	70
GVPS 20	2	180	50	75	90	250	160	125
GVPS 25	2.5	270	50	75	90	360	240	200
GVPS 30	3	400	50	75	90	450	330	265

As standard, versions **N** and **T** are delivered with silencer **S** and version **X** with silencer **K**. Only exception, the GVPS 30 is fitted with silencer **K**.

Evacuation time in seconds per liter

% vacuum	10			20			30			40			50			60			70			80			85		
	X	T	N	X	T	N	X	T	N	X	T	N	X	T	N	X	T	N	X	T	N	X	T	N	X	T	N
GVPS 12	0.05	0.10	0.14	0.11	0.22	0.30	0.22	0.37	0.49	0.62	0.55	0.71	-	0.78	0.97	-	1.16	1.33	-	1.92	1.81	-	-	2.66	-	-	3.42
GVPS 15	0.04	0.07	0.09	0.09	0.15	0.20	0.15	0.24	0.32	0.27	0.36	0.46	-	0.52	0.63	-	0.77	0.85	-	1.27	1.16	-	-	1.71	-	-	2.20
GVPS 20	0.03	0.04	0.06	0.06	0.09	0.12	0.11	0.14	0.19	0.19	0.22	0.28	-	0.31	0.38	-	0.46	0.52	-	0.76	0.71	-	-	1.04	-	-	2.13
GVPS 25	0.02	0.03	0.03	0.04	0.06	0.07	0.08	0.10	0.11	0.14	0.14	0.16	-	0.21	0.22	-	0.30	0.30	-	0.50	0.41	-	-	0.60	-	-	0.77
GVPS 30	0.01	0.02	0.02	0.03	0.04	0.05	0.06	0.07	0.08	0.11	0.10	0.12	-	0.15	0.17	-	0.22	0.23	-	0.37	0.31	-	-	0.45	-	-	0.58



Specifications

Supply	Non-lubricated filtered air, 2 to 6 bar
Optimum pressure	4 bar
Voltage	24 V DC
Power	0.7 W
Materials	POM - 2017A – Cu Zn – PA6 15% FG
Temperature	0 to 60 °C / 32 to 140°F
Number of valve operations	10 million
Operating frequency	Maximum 2 Hz
Function	N.C. (N.O. on request)

For all orders, please specify:

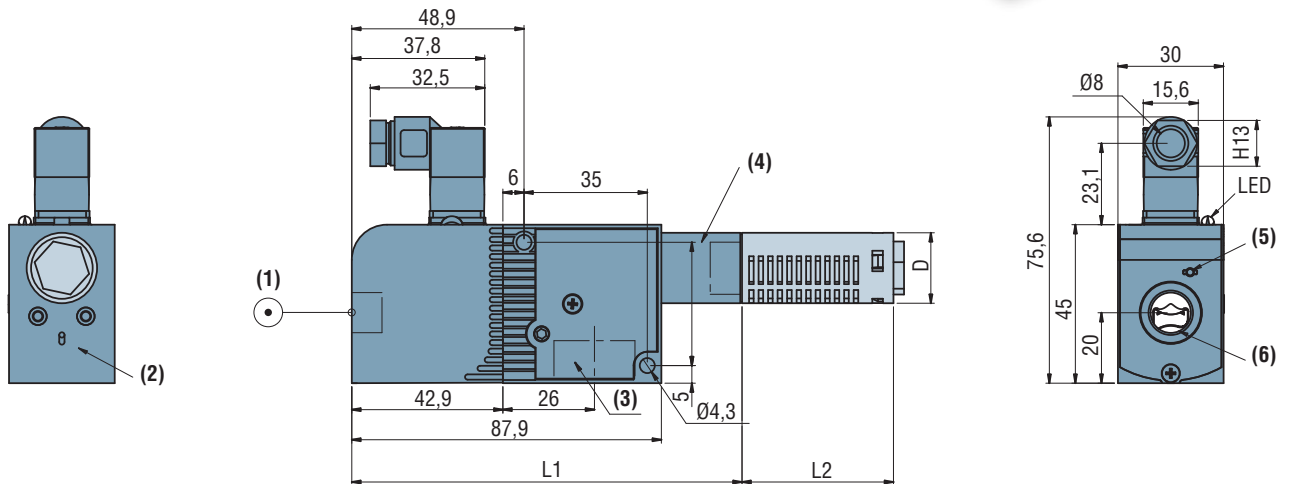
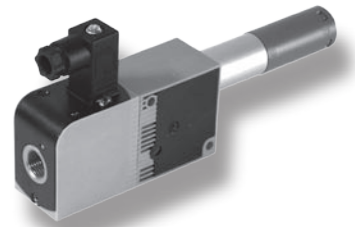
Model + Nozzle diameter + Characteristic + Silencer + Fitting + Control

1: Model	2: Nozzle diameter	3: Characteristic	4: Silencer	5: C.A. fitting	6: Controls
GVPS	12 1.2 mm 15 1.5 mm 20 2 mm 25 2.5 mm 30 3mm	X 50% vacuum T 75% vacuum N 90% vacuum	- Without silencer S ⁽¹⁾ Diffuser K Through-type	14 1/4 G BSPP	E1 24V DC N.C. E Other voltages on request

(1) no silencer (S) for nozzle Ø 30.

E.g. **GVPS 30 N K 68 E1**

(GVPS series electrically-controlled vacuum pump, nozzle diameter 3mm, 90% vacuum with through type silencer, 6x8 calibrated tube fitting and 24V DC N.C. control)



- (1) 4 bar compressed air tank
- (2) Vacuum switch option mounting zone
- (3) Vacuum 1/2 Gas
- (4) Exhaust
- (5) Manual controls
- (6) 1/4 Gas (push fitting supplied for 6 x 8 version)

models	D (mm)		D1 (Gas)		L1 ⁽¹⁾ (mm)		L2 (mm)		
	X	N/T	X	N/T	X	N/T	S	K(N/T)	K(X)
GVPS 12	30	20	1/2	1/4	105.95	110.8	45	68	121
GVPS 15	30	20	1/2	1/4	105.95	120.95	45	68	121
GVPS 20	30	30	1/2	1/2	105.95	105.95	60	121	121
GVPS 25	30	30	1/2	1/2	105.95	105.95	60	121	121
GVPS 30	30	30	1/2	1/2	177.75	177.75	-	121	121

(1) L1 with standard silencer (S).

Additional information

Options

- Vacuum switches see page 8/16.
- Other options see pages 8/17 and 8/18.

Curves

See page 8/19.