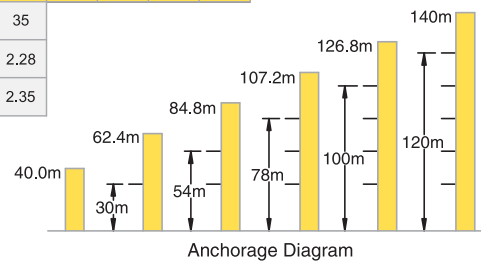


TC 5540-T Flat Top Tower Crane

5 t

Load Capacity

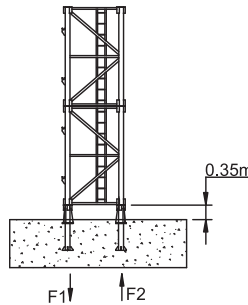
Jib Length	Radius (m)		2.8~15															
	Hoisting Load (t)		18	20	22	25	28	30	32	35	38	40	42	45	48	50	52	55
55m	5.00		4.26	3.67	3.34	2.87	2.46	2.27	2.07	1.85	1.63	1.53	1.41	1.29	1.16	1.09	1.02	0.93
	2.50							2.34	2.14	1.91	1.70	1.60	1.48	1.35	1.23	1.16	1.09	1.00
50m	5.00		4.51	3.87	3.54	2.98	2.62	2.39	2.21	1.91	1.75	1.66	1.52	1.42	1.30	1.23		
	2.50							2.28	1.98	1.82	1.73	1.59	1.49	1.37	1.30			
45m, 40m	5.00		4.62	4.12	3.63	3.17	2.70	2.55	2.31	2.11	1.82	1.78	1.60	1.53				
	2.50							2.38	2.18	1.89	1.85	1.67	1.60					
35m	5.00		4.42	3.91	3.41	3.01	2.75	2.55	2.28									
	2.50							2.35										
30m, 25m, 20m	5.00		4.70	4.26	3.63	3.21	2.93											
	2.50																	



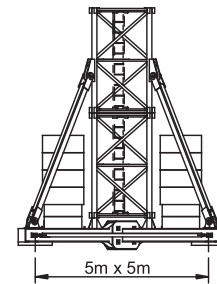
Specifications

Hoisting	No of Falls	5		6			
	Speed (m/min)	11.75	40	80	5.87	20	40
	Hoisting Load (t)	2.5	2.5	1.28	5	5	2.56
Power (kw)		5	18	18	5	18	18
		Speed(rpm)		0 ~ 0.6			
Slewing		Power(kw)		2 x 2.2			
		Speed(m/min)		40	20		
Trolley		Power(kw)		3.3	2.2		
		Speed(m/min)		0.55 - 0.7			
Climbing		Power(kw)		5.5			
		Main Supply		415V / 50Hz			
		Electric Power		25.7kw (32.1 kVA)			
Variant Model	6 Ton Max. Capacity Mechanism at 13.5m						

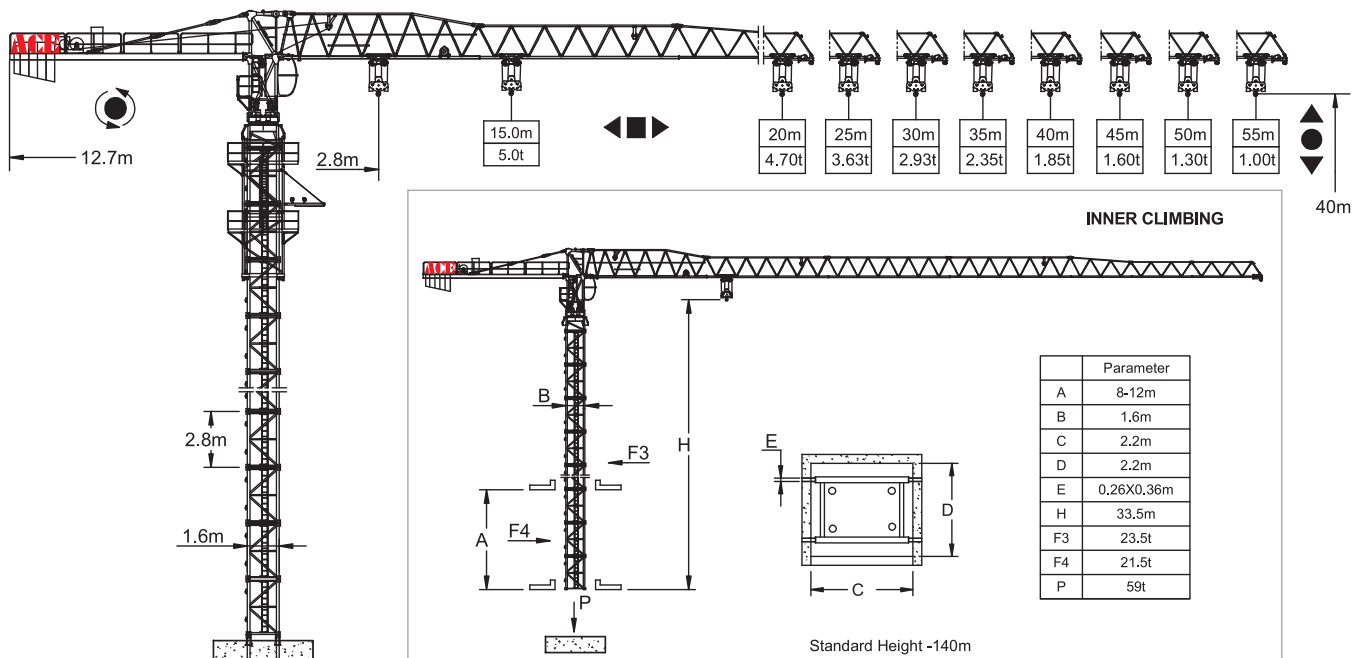
Outrigger Stationary



Chassis Stationary/Rail Mounted



F1	◇ 59t	△ 75t	⊙ 32.9t
F2	◇ 81t	△ 97t	



F Reaction ◇ In Service △ Out of Service ⊙ Dead weight without load and counter weights but with longest jib and free standing height.
P - Vertical Load