

Plot 1

Ground Floor

Dining –	3.55m x 3.05m (11'-8" x 10')
Kitchen –	4.85m x 5.25m (15'-11" x 17'-3")
Lounge –	3.95m x 5.35m (12'-11" x 17'-6")
Utility –	2.45m x 2.15m (8' x 7')
WC –	0.95m x 2.15m (3'-1" x 7')

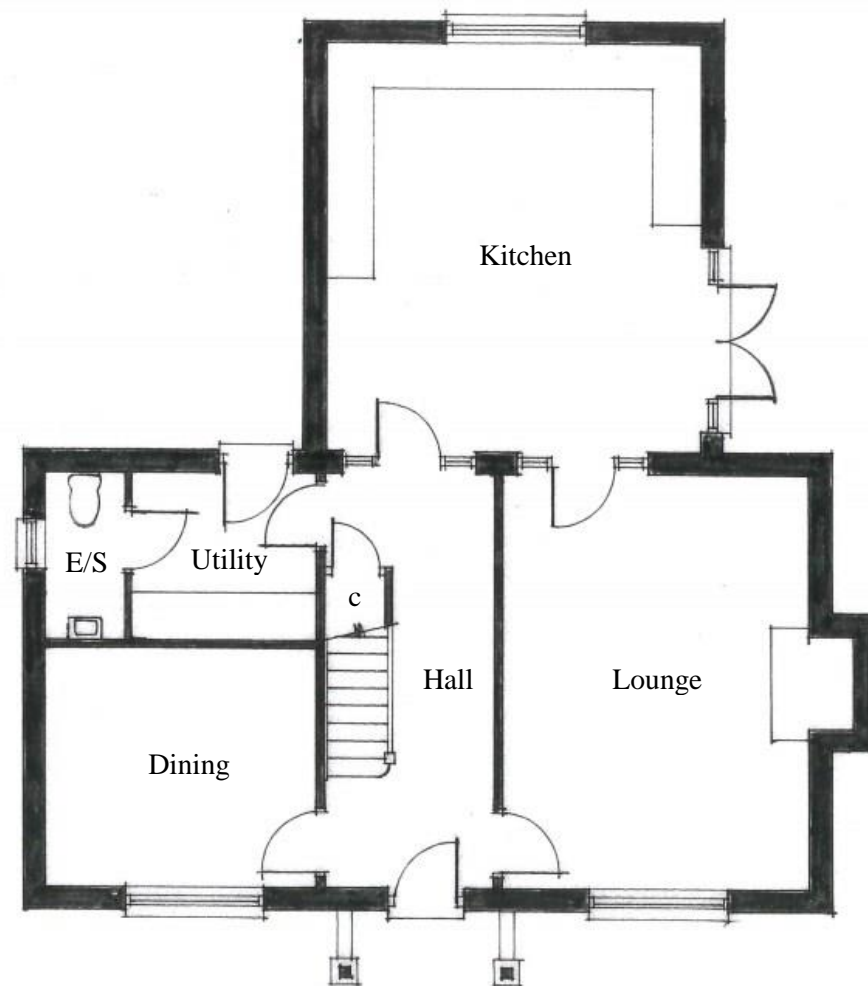
Total Area – 163m² (1,754ft²)

First Floor

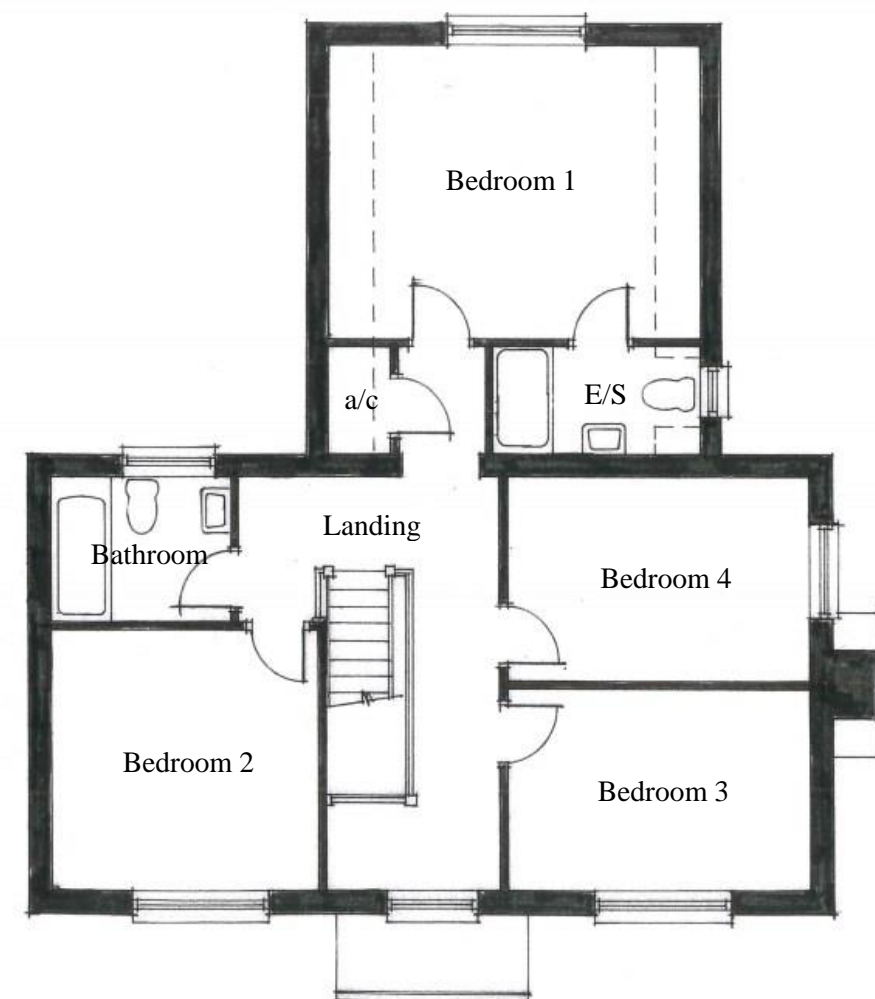
Bathroom –	2.3m x 1.85m (7'-6" x 6')
Bedroom 1 –	4.85m x 3.72m (15'-11" x 12'-2")
Bedroom 2 –	3.55m x 3.35m (11'-8" x 11')
Bedroom 3 –	3.95m x 2.6m (12'-11" x 8'-6")
Bedroom 4 –	3.95m x 2.6m (12'-11" x 8'-6")
En-suite –	2.65m x 1.35m (8'-8" x 4'-5")



Front Elevation



Ground Floor Layout



First Floor Layout