

Kingspan XL200™ Pre-Painted Colour Coated System



Building to the
Power of



Kingspan XL200™ Pre-Painted Colour Coated System



Begin with the finish

Kingspan XL200 pre-painted colour coated system provides guaranteed durability for roof, wall and facade insulated panels for use in a wide range of applications and environments.

The multi-layered Kingspan XL200 exterior coating offers excellent cut edge protection and resistance to corrosion, chemical attack, ultra-violet light and abrasion.

The Kingspan XL200 coating guarantee is available for Kingspan's insulated panels for up to 30 years to first maintenance with an overall life expectancy of 40 years or more.



Corrosion



Chemical Attack



Ultra-Violet



Condensation



Abrasion

Kingspan XL200™ Features and Benefits

- Guaranteed zero maintenance for up to 30 years
- Offers cut edge protection for full life of the guarantee
- Simple fuss free guarantee administration service
- Guarantee is available directly to the property owner and can be transferred
- Applies to all Kingspan Insulated Panels and related ancillaries down to a minimum slope of 1°*
- No restrictions applied to the area of surface affected to invoke the guarantee
- Not orientation dependant
- No notice requirement for end of warranty period

* Please refer to the Kingspan Technical Design Bureau or Design Manual for products and minimum roof pitches.

How to determine the Kingspan XL200™ Guarantee Period

1. Choose your colour preference and its location marine* or inland
2. Select roof or wall
3. The number of years shown is the Kingspan XL200 Guarantee Period

The guarantee information below is for marine or inland regional use of Kingspan XL200 in Northern Europe. For information on the use of Kingspan XL200 in Southern Europe please contact Kingspan Technical Design Bureau.

	Roof		Wall	
	Inland	Marine	Inland	Marine
White	30 years	25 years	30 years	25 years
Grey White				
Wedgewood Blue				
Merlin Grey				
Mushroom				
Willow Green				
Cinnamon				
Gull Grey				
Olive Green				
Black				
Khaki Green				
Quartz Grey				
Cream				
Goosewing Grey				
Cornflower Blue	20 years	15 years	25 years	20 years
Azure Blue				
Jade				
Leaf Green				
Juniper Green				
Sapphire Blue				
Slate Blue				
Van Dyke Brown				
Saffron Yellow				
Copper Beech				
Shiraz				
Russet Red				
Flame Red				
Orange				

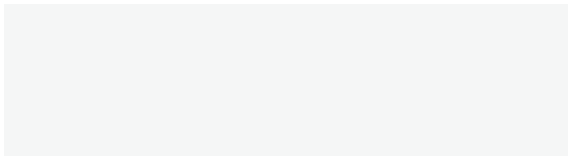
* Marine area refers to buildings within 1km of any coast.

Colour Matching

Every effort has been made to ensure the colour selector in this literature represents our standard colours as much as possible. Note that they are only representative and cannot convey the actual colour and effect. Metal swatches are available on request from Marketing Services to view more accurate colour and texture prior to specification.

Kingspan XL200™ Pre-Painted Colour Coated System

Colour Selector



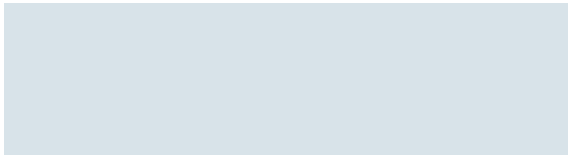
White

BS 00E55



Khaki Green

BS 12B21



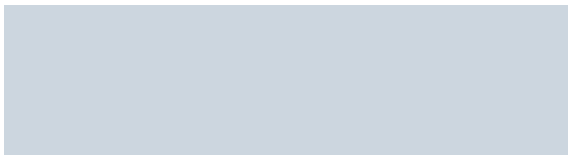
Grey White

RAL 9002



Jade

BS 14C37



Gull Grey

BS 18B17



Olive Green

BS 12B27



Wedgewood Blue

BS 18C37



Leaf Green

RAL 6002



Cornflower Blue

BS 18E53



Juniper Green

BS 12B29



Merlin Grey

BS 18B25



Sapphire Blue

RAL 5003



Azure Blue

BS 18C39



Slate Blue

BS 18B29

The printed samples are only representative of the Kingspan XL200 colours.
British Standard (BS) or RAL reference numbers represent the nearest colours and are not exact matches to Kingspan XL200.
Please ensure that you request a swatch sample from Kingspan Marketing Services to view accurate colour and texture prior to specification.

Kingspan XL200™ Pre-Painted Colour Coated System

Colour Selector



Quartz Grey BS 10B23



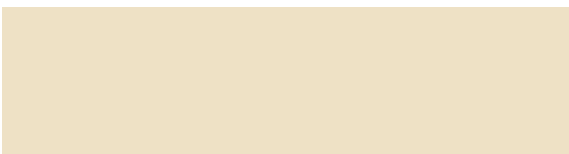
Mushroom BS 10B19



Willow Green BS 12B17



Goosewing Grey BS 10A05



Cream BS 10C31



Cinnamon BS 08C35



Saffron Yellow BS 08E53



Black BS 00E53



Van Dyke Brown BS 08B29



Copper Beech BS 04C39



Shiraz RAL 3004



Russet Red BS 04D44



Flame Red BS 04E53



Orange BS 06E53



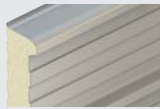
Finish Assured



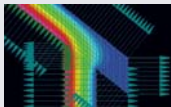
Kingspan TOTAL Panel Guarantee

The Kingspan TOTAL Panel Guarantee covers all of the key performance areas for its insulated roof, wall and facade systems in a single package. As well as guaranteeing the coating for up to 30 years, Kingspan additionally guarantees the structural and thermal performance of its panels for up to 25 years. The products are fully tested to all relevant building standards, and are Energy Performance of Buildings Directive (EPBD) optimised.

Key Features of Kingspan TOTAL Panel Guarantee



Up to 25 years insulated panel structural performance



Up to 25 years insulated panel thermal performance and Energy Performance of Buildings Directive (EPBD) optimised



Kingspan insulated panel durability and coating for up to 30 years. The coating is maintenance free for the duration of the guarantee.

Additional Benefits of Kingspan Insulated Panels



Airtight Systems - conforms to new 2006 Part L2 regulations (England & Wales) and Section 6 Building Regulations (Scotland)



Insurer Approved Systems (Certified to LPCB and FM standards)



Health & Safety Compliant (walkability/non-fragile roof systems)



Site Inspection Service and support throughout the contract period



Advise on all areas of architectural & structural design, detailing and installation of product range



Enhanced site productivity with safe and simple mechanical handling solutions



Comprehensive R&D, Testing & Certification



Envirocare Technical Services provide technical advice on EPBD, carbon footprints, SBEM and regulation compliance

Kingspan XL200™ Technical Data

Properties	Thermoplastic Plastisol Paint	- Very good corrosion resistance - Very good formability - Excellent abrasion resistance
Applications	External uses: construction (cladding, roofing and accessories), cooling rooms. Internal uses: partitions (see Kingspan Design Manual for Model Specifications)	
Description	Thickness Composition	Nominal: 200 microns Front: 7 microns of primer + 200 microns of finishing Back: 20 microns Double side finishing available upon request
	Gloss (Gardner 60°) Colours	30 to 50 GU (%) Complete range - See Colour Selector in this literature
	Appearance	Embossed leathergrain
Performances	Adhesion of the coating Resistance to cracking on bending Impact resistance Surface "pencil" hardness Clemens resistance to scratching Taber abrasion resistance Salt spray test Temperature resistance Fire resistance Resistance to acids and bases UV resistance Resistance to solvents: - aliphatics and alcohols - ketones - aromatics Resistance to mineral oils	≤ 1 T ≤ 3 T Very good 4 to 6B > 3500g 20 to 30 mg 1000 hours Maximum 75°C UK: Class 1 according to BS 476: part 7 Good to very good Excellent Very good Low Low Very good
Paint touch up	Touch up as required with a brush, a spraygun or an aerosol. Embossing cannot, however, be reconstituted by repainting.	
Remarks	The performances indicated are averages and may vary in particular according to the type of substrate used. This data should not be regarded as contractual.	

Support Service

All areas of advice on coatings, architectural & structural design, detailing and installation of the product range is available through the Technical Design Bureau. The Field Service Engineering Team offer on the spot advice, guidance and expertise throughout the installation period. Marketing Services will provide swatches of Kingspan XL200 upon request to assist you in verifying colour and texture of the pre-painted colour coated system.

Contact us:

	Marketing Services Team	Technical Design Bureau	Quotations Team
UK	Tel: +44 (0) 1352 717251 Email: info@kingspanpanels.com	Tel: +44 (0) 1352 716101 Email: technical@kingspanpanels.com	Tel: +44 (0) 1352 716400 Email: bestprice@kingspanpanels.com
Ireland	Tel: +353 (0) 42 9698 540 Email: marketingkc@kingspan.net	Tel: +353 (0) 42 9698 529 Email: technicalkc@kingspan.net	Tel: +353 (0) 42 9698 555 Email: quotationskc@kingspan.net

For further information, the latest updates and to view our 3D virtual colour selector for Kingspan XL200 go to www.kingspanpanels.com/XL200.



Kingspan Limited

UK: Telephone: +44 (0) 1352 716100 Fax: +44 (0) 1352 710161 Email: info@kingspanpanels.com
Ireland: Telephone: +353 (0) 42 96 98500 Fax: +353 (0) 42 96 98572 Email: sales.ire@kingspanpanels.com

Details for the following countries; Australia, Belgium, Czech Republic, Germany, Hungary, Netherlands, New Zealand, Poland, Romania, Slovakia
can be found by visiting our website www.kingspanpanels.com or our group website www.kingspan.com

The colours and textures illustrated in this colour chart may be best appreciated by examining real swatches of the actual colours. Due to the limitations of colour printing, the printed swatches may not accurately convey real life textures and finishes. Care has been taken to ensure that the contents of this publication are accurate, but Kingspan Limited and its subsidiary companies do not accept responsibility for errors or for information that is found to be misleading. Suggestions for, or description of, the end use or application of products or methods of working are for information only and Kingspan Limited and its subsidiaries accept no liability in respect thereof.