

NEW CLIENTS

- 5G
- Andell Developments.
- Berrywood Primary School.
- Bitterne United Reformed Church.
- Clanfield Surgery, Hordean.
- Easton Village Hall.
- Grandaman Limited.
- Greendale Developments.
- Mayflower Homes Ltd.
- Newsquest.
- Penn Croft Farms.
- Romsey Reclamation Ltd.
- St Pauls Surgery, Winchester.
- Step Associates, Salisbury.
- The Braishfield Estate Partnership.
- Wareham Surgery.
- Welland Medical Practice, Peterborough.

studio four architects ltd
www.studiofourarchitects.com

Gambledown Farm by Anna Prideaux Photography



GAMBLEDOWN FARM

Our two-staged conversion of farm buildings at Gambledown Farm is now complete. The project regenerated a redundant farm courtyard into two luxury barn stays set in 270 acres of rural Hampshire.

In March a 2-bedroom holiday barn called 'the cart shed' was handed over. The second phase, 'the hay barn' was completed in August and provides a 3-bedroom holiday barn stay. The development reflects a requirement to carefully restore the buildings and maintain their character, with the insertion of contemporary spaces, playful double height rooms, and views down into the living areas from above. Studio Four will be entering this project for an RICS award in 2019 and the project has been praised by the Local Authority as a great example of rural regeneration.



WELLS-NEXT-THE-SEA LIFEBOAT STATION

We obtained Planning Permission, on behalf of the RNLI, for a new lifeboat station at Wells-next-the-Sea, North Norfolk.

The building will house the inshore lifeboat as well as a new all-weather Shannon-class lifeboat and will provide modern facilities for the volunteer crew.

A Visitor Engagement area and Souvenir Outlet will be open to the public to convey the sea safety message at this extremely busy tourist beach location.

Designed in line with RNLI operational standards and high energy efficiency, including a ground-source heat-pump, it will be timber-clad with curved stepping roofs and large windows enabling the RNLI crew to survey the sandy beaches, harbour channel and the extensive salt marshes beyond.



LECKFORD ESTATE, TEST VALLEY

We achieved six Planning permissions at the Leckford Estate in the Test Valley this year, as part of our framework agreement.

Two listed buildings received approval for major alteration and refurbishment works to create contemporary family dwellings, a cart shed received approval for conversion to an open-plan 2-bedroom house, a large car park expansion at the Leckford Farm Shop was permitted and we were also successful with two alternative development proposals at an infill site within the village Conservation Area; a single 5-bedroom detached house and also two 3-bedroom semi-detached dwellings.



RNLI PENLEE LIFEBOAT STATION

Construction started for the new RNLI facility at Newlyn Harbour, near Penzance, Cornwall during the summer. Symons Construction (of St Ives) began work by diverting a stormwater sewer that ran under the proposed building footprint. The contemporary two-storey building is to be located on the same site as the existing station which will operate from temporary facilities during construction. With features in line with current RNLI operational standards and highly energy efficient, it will be timber-clad with a monopitch roof and large timber windows enabling the RNLI to survey Newlyn Harbour and south and east into Mounts Bay and beyond. The volunteer RNLI crew are in temporary accommodation for the duration of works. The new station will become fully operational during 2019.



LDRU, TATCHBURY MOUNT

Having received Planning Permission in September, the Learning Disabilities Residential Unit (LDRU) at Tatchbury Mount is due to start on site imminently. The build will provide Southern Health with a new 10-bedroom medium secure unit on their campus in Southampton. The design will provide a series of therapy and day rooms, bedrooms with en-suites, kitchens, administrative and staff spaces where users and staff can all work and rehabilitate in a safe, secure and purpose-built environment. Kier are the contractors and will be on site for the next 12 months.



SGH CHILDREN'S EMERGENCY DEPARTMENT

The first phase of Southampton's new Children's Emergency Department was handed over in November.

This new colourful unit brings together a number of Children's Emergency functions that were spread around the hospital. Combining the Children's Emergency units is the first step towards creating a separate Children's Hospital for Southampton.

The Children's Emergency department is being funded partly by money direct from the NHS and partly charity. The charity still needs your support and you can help through www.southamptonhospitalcharity.org/appeals and www.themurrayparishtrust.com/ The phase to follow will involve remodelling the existing adult and children's waiting areas.



MAGNA RIVERSIDE, GODALMING

Works are nearing completion on the conversion of a former office block in Godalming to create seventeen one-and-two bedroom high-quality flats. We were commissioned to carry out initial design, Planning and Building Regulations and we then worked alongside the contractor during construction. Balconies were added to the rear of the building to take advantage of this riverside location; the building was also re-rendered and re-roofed externally to improve its appearance.



BLOCK B & BLOCK C, ST MARY'S HOSPITAL

We are actively engaged in full internal remodelling works to Block B and Block C as part of Portsmouth's St Mary's Community Health Campus Redevelopment with Solent NHS Trust, due for completion in August 2019. The proposed £5m multi-level refurbishment to Block B is under way to accommodate a more expansive pharmacy, improved outpatient facilities and new staff hub. The £1m refurbishment of Block C will house relocated hospital staff, providing offices, lecture rooms and training spaces.

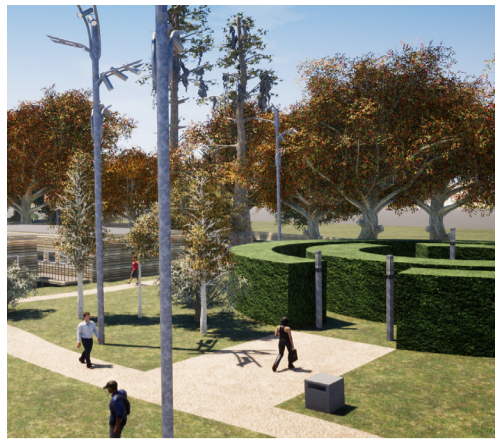
In addition to Penlee and Wells-next-the-Sea, we are working on eight further schemes around the English coast for the RNLI. The majority of these will be submitted for Planning Permission during 2019. We have also secured Temporary Planning Permission for Dart lifeboat station, Devon.



THE AVENUE, SOUTHAMPTON

Planning Permission has been granted for a new development of 10 dwellings on The Avenue, Southampton. The scheme creates two pairs of semi-detached 4-bedroom houses fronting the main road, in the style of existing properties in this prominent location, with access between them to a terrace of six 2-bedroom mews-style properties behind.

This image also won our in house photo competition for 2018 Best CGI render.



OUTDOOR LEARNING CENTRE, EASTLEIGH

This proposal was to develop a site in Bishopstoke into a Youth Options Outdoor Learning Centre.

The Centre will provide space and activities to support children and young people, particularly from urban areas, to engage with the natural environment.

There is a growing body of evidence that suggests that positive engagement with nature and the natural environment can lead to a reduction in stress, anxiety and depression.

Youth Options Outdoor Learning Centre is in the unique position of providing an oasis of wild space in the middle of an urban area where children and young people can engage with nature, play safely and learn and understand the world around them.



TOTTON FLATS, CALMORE

We were appointed as project architect to champion New Forest District Council's new accommodation flats in Calmore, a two-block development which is to become the flagship of the Council's housing assets.

The brief was to meet the requirements of Secured By Design as well as Lifetime Homes; we are currently on track to achieve award-winning status in both.

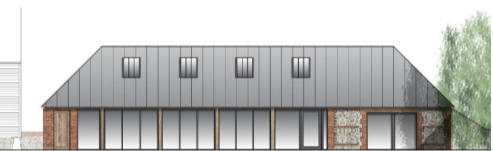


ANDOVER LOCALITY HUB

Following a feasibility study looking at a number of options, we have designed a new extension to Andover War Memorial Hospital to accommodate a relocated Andover Health Centre.

The new building is combined with a covered entrance canopy to the existing hospital street behind.

Following a number of successful Planning applications with **Tony Langridge Consulting** for **Aster Group** on Previously Developed Land sites in the Test Valley area, and more recently in Somerset, this year we have started carrying out feasibility studies on similar sites in Dorset and Wiltshire, including the Weymouth, Portland, Pewsey, Burbage and Milton Lilbourne



PARK FARM, HAMBLEDON

We are currently working with a repeat client to regenerate a redundant farm building in the South Downs National Park.

The building is characterised by a historic brick and flint wall facing the road, and a largely open-fronted section onto the courtyard.

After we gained Planning Permission and converted a similar building opposite into office accommodation, we were approached by the same client to develop Park Farm.

The company will expand across both premises, with Park Farm providing capacity for 14 members of staff, ancillary spaces, and two meeting rooms.

An application to convert this building will be submitted in early 2019.



FARNHAM UNITED REFORMED CHURCH

After gaining Listed Building Consent, a Planning application has been submitted for the substantial alteration and extension of Farnham URC.

The project comprises a new glazed entrance foyer, the reconfiguration of halls to the rear with a new contemporary design and the re-ordering of the main worship space.

Materials have been carefully chosen to reflect the Farnham vernacular, and the layout internally designed to provide a single entrance to the whole suite of spaces.

Improvements to Queen Alexandra Hospital's emergency department are on site in Portsmouth. This includes a new Frailty intervention department to help streamline the emergency service. It is due to be handed over in February.



SOLENT UNIVERSITY, SOUTHAMPTON

We were appointed on a Design & Build project for a major refurbishment of four floors of Reginald Mitchell building, and the top floor of Herbert Collins building at Solent University. Warsash Maritime Academy has now been relocated into the newly refurbished classrooms for their Senior Officer, Yacht and Management courses.

Kimber Halls of Residence also received a complete refurbishment. All en-suites and shared WCs were upgraded, all internal doors, as well as the entrance doors, were replaced, contemporary flooring and fresh paint revived the corridors, and the interior design solution implemented within the shared common room created a modern, stylish and brighter space for students to study and relax.



HILL LANE, SOUTHAMPTON

A Planning application was submitted for a new block of six flats on Hill Lane in Southampton.

The design comprises a pair of gable roofs to keep massing as low as possible, with recessed balconies at second floor level and internal layouts that avoid overlooking issues.

The design retains existing trees on the site, incorporates both shared and private gardens and provides discrete off-road parking for cars.

SOCIAL EVENTS

THRUXTON GO-KARTING

Our annual karting event in July was a great success, with over 50 staff and guests enjoying some wheel-to-wheel action at this superb venue. Thanks to everyone's kind donations, we also raised £325 for our chosen charity; Youth Options in Romsey.

STAFF SUMMER DAY

Our annual Staff Fun Day at the Romsey office turned out to be another cracker! It started with a simple task; to get water from the top of a ladder into a bucket, and ended up with the fitness freaks trying to out-paddle each other on Phil's Evil Kayaking Machine! In between we challenged each other at Jenga, badminton, cake-baking, tower-building, assault-coursing, kayaking, mystery-solving and Connect 4, spurred on with something from the barbecue and of course the cake-judging.

AWARDS CEREMONIES

Selsey lifeboat station at RICS south-east awards – WINNER!

A fantastic evening hosted by the 'one and only' Fred Dinenage at the Kassam Stadium in Oxford. The black tie event, with dinner and drinks, was a wonderful way for the team to celebrate all the hard work that went into making the project a great success. Topped off by the scheme winning the Community Benefit category!

Llandudno lifeboat station at RICS Wales awards – WINNER!

Another successful night of awards, this time in the Infrastructure category. Hosted by the BBC's Lucy Owen (spoken beautifully in Welsh and then English!) at the Radisson Blu hotel in Cardiff, it was a pleasure to bring everyone who had been involved in the scheme over the years together and gain recognition for the teams' efforts.

RICS Grand Final The Brewery, London – both Selsey and Llandudno lifeboat stations shortlisted.

With both schemes winning regionally they progressed to the national finals in their respective categories. The drinks flowed and while we didn't pick up an award this time it was great to be in amongst some truly excellent schemes and high quality architecture. A brilliant night for the team, thoroughly enjoyed by all!

STAFF NEWS

- In August we sadly said farewell to Steve Hole, one of our longest-serving employees. After 23 years at Studio Four, Steve decided it was time to re-evaluate his work/life balance. The Romsey office will not be quite the same without him.
- We were delighted to announce that Stuart Turnbull, who has worked in our Romsey office for 13 years, is now an Associate Director of the practice.
- An internal re-shuffle of our three offices took place this year with Director Phil Amey moving to Southampton to be closer to his clients, and Director Gareth Jenkins moving to the Romsey office to take over from Steve Hole.
- Architectural Technologists and friends Alex McGillivray and Ben Hobbins joined Studio Four after graduating last summer. Architect Charlotte Richardson joined our Winchester office, and Kinga Berkesi moved across from Southampton to the Romsey Office to assist the team with Revit-led projects.
- During the year Rhiannon North, an Architect normally based in our Winchester Office, embarked on 8-week residential secondment visits to the Falkland Islands, as a technical representative for Studio Four, to assist Ramboll with Architectural Consultancy advice and site inspections. She is about to return for a third tour and is thoroughly enjoying the whole experience.
- Kurt Riggs has now completed his Garden Design level 4 postgraduate diploma from the British Academy of Garden Design. We are looking forward to seeing his creative landscapes complemented by his technical detailing.
- This year we have taken steps forward with our social media presence with a new Instagram account and updated LinkedIn profile. These improvements to our online marketing have been led by Interior Architectural Designer, Sarah Ryland.
- Congratulations to Jez Davies and his new wife Lizzy, who were married this year.
- Congratulations also to Simon Helm, Kurt Riggs, Stuart Turnbull and Andrew Browett, who each welcomed lovely babies this year. Best wishes to the new fathers.
- Well done to Claire Lingham who won our Christmas card competition
- Thank you to all our staff for taking part in our year-long photography competition. Well done to the category winners: Jez Davies - CGI, Rhiannon North - External, Simon Helm - Internal, Gareth Jenkins - On Site, and Danielle Tucker - Non-S4 Photo.



SOUTHBROOK FC

This year we are pleased to have sponsored the Southbrook FC under 12s football team from Southampton, and wish them all great results.



THE WORLD'S BIGGEST COFFEE MORNING

We were pleased to host a coffee morning at our Romsey HQ offices on 28th September as part of the World's Biggest Coffee Morning in aid of Macmillan Cancer Support. We raised £56