

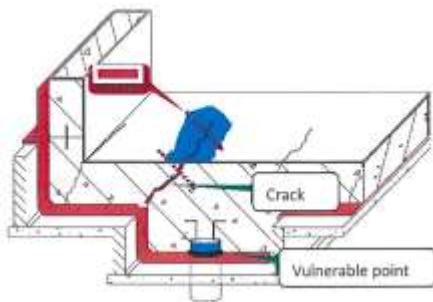


RIMPROOF

DESCRIPTION:

A unique, multi-layered composite sheet membrane, composed of a high density polyethylene structural layer, an aggressive reactive adhesive and a trafficable weather resistant protective granular layer.

The unique adhesive layer bonds by a form of chemical cold fusion when concrete is poured onto the protective Rimproof layer. Thus preventing the ingress or migration of water.



**Pressure sensitive adhesive strip
(Specially for end-laps overlapping,
100m long/roll* 80mm wide)**

TYPICAL USES:

Can be applied either horizontally to an evenly prepared concrete substrate, or vertically to permanent formwork or shotcrete such as on tight access site walls where conventional membrane installation is not possible.

Designed for waterproofing slab situations over unstable sites where conventional membranes bonded to a working slab may be damaged by settling of the subsoil.

FEATURES:

Complies with all Green Star requirements. nil VOC.
Prefomed, high density flexible sheet membrane.
Lose- laid Rapid installation
No priming or adhesives required,
Unique, chemical fusion with freshly poured concrete.
High density shock and puncture resistant.
Superior physical and chemical resistance.
Unaffected by salt water or acid sulphate soils or clay.
Able to be applied in wet conditions and at temperatures above -4°C. *
Remains flexible and waterproof for the life of the structure.

SURFACE PREPARATION:

Concrete surfaces are to be smooth. Remove all protrusions, patch voids in shotcrete that are less than 12mm. Grout and make stable all penetrations, and conduits, etc. Lost formwork, plywood, steel piling or other solid material able to support concrete placement are suitable.

To efficiently expedite installation on horizontal areas, install Rimproof on 50mm mortar blinding layer.



RIMPROOF

TYPICAL PROPERTIES:

Tensile Property	Max tensile force (N/50mm)	> 500
	Breaking elongation at HDPE	> %400
Tear strength	around nails (N)	> 400
Shock resistance		Diameter(10+1)mm no leakage
Static loading		20kg, no leakage
Thermal resistance		70°C, 2h, no displacement, flow or sagging
Water migration		0.6MPa, no migration
Hydrostatic Heat Resistance		> 70m
Peel Adhesion To Concrete (N/mm)	Clean surface	> 2.0
	Contaminated surface with cement powder	> 1.5
	UV aging	> 1.5
	Aging Test	> 1.5
Peel Adhesion to concrete-after being submerged in water- (N/mm)		> 1.5
Heat aging (70°C/168h)	Tensile retention rate %	> 90
	Elongation retention rate %	> 80
Crack Cycling	Flexibility @ -23°C	Pass
Stability after heating	Appearance	No crease, flow or sagging
	Dimensional variation %	< 2.0

APPLICATION:

General.

Apply the membrane, HDPE side down. Trafficable aggregate side up.

Position side overlaps and end joins carefully before making adhesive bond.

Stagger end laps to prevent build-up.

Horizontal.

Ensure aggregate side up, loosely roll out the membrane taking care to overlap the previous sheet along the marked selvedge.

Ensure underside of succeeding sheet is clean, dry and free from contamination before sealing overlap.

Seal the overlap by peeling back the selvedge release film. Apply pressure to overlapping area to ensure a firm bond. Ensure a continuous bond is achieved without creases. If necessary heat the overlapping area using hot air welding gun.

Seal end laps with Rimproof Tape.

Rimproof Tape is also used to seal around detailed areas such as pile caps, penetrations etc.

1: Install Membrane (Loosely laid)



2: Rolls Overlapping

2.1: Cut Edges



RIMPROOF

3: Roll End Laps

3.1: Cut ancillary adhesive tapes into suited size



3.4: Firmly press the overlapping area



3.2: Place the strip in right position



3.3: Heat the tape strip until melting



CONCRETE PLACEMENT:

Reinforcement and concrete may be placed immediately upon completion of the Rimproof installation. Place and compact carefully so as to avoid damage to the membrane.

COVERAGE:

Allowing for laps 20m² roll covers 18.9m² approx.

PACKAGING:

Rimproof 1.2 in 20m² rolls of 34 kg
Rimproof 1.5 in 20m² rolls of 42.5 kg
Rimproof Tape in 80mm x 100m rolls

CLEAN UP:

No clean up provision required.

SHELF LIFE & STORAGE:

BELOW GRADE PREFORMED SHEET MEMBRANE

COLD FUSION COMPOSITE



RIMPROOF



The information presented in this data sheet does not imply any warranty. Further, the maker reserves the right to alter the product, the specification and/or the application techniques as described herein without prior notice, in line with his policy of technological advancement and product improvement. Whilst any information and/or specification contained herein is to the best of our knowledge and experience, all of the above information must in every instance be taken as merely indicative and subject to confirmation after long-term practical applications. For this reason, anyone intending to use the product must ensure beforehand its suitability for the envisaged application. In every instance, the user alone is fully responsible for any consequences deriving from the use of the product. Furthermore, no warranty is given or implied in connection with any recommendations or suggestions made by us or our Representatives, Agents or Distributors as conditions of use and any labour involved beyond our control.



ADCRETE INDUSTRIES PTY LTD
43 Grice Street (PO Box 3030) Clontarf, Qld 4019
Ph: 07) 3883 1888 Fax: 07) 3883 1777
ABN: 42 010 308 791