



大宅

Volume 163 | SEPTEMBER 2018

Spotlight:
Double Joy
雙倍尊貴

Special Feature:
Peak of Kau To Shan
九肚山之巔

SELECT DELUXE HOMES



LANDSCOPE

CHRISTIE'S
INTERNATIONAL REAL ESTATE

領域佳士得國際地產

上環荷李活道全幢商廈
罕有全幢 家族傳承瑰寶

CENTRAL
MID-LEVELS



總面積: 約 32,000 餘呎
每層: 約 1,200 餘呎

戰略位置 無法取代
矜罕地段 中區 CBD
罕有全幢 家族傳承
業主特約 全幢代理



特約委託



For Sale 售價:
HK\$7億餘

可以公司轉讓股份形式買賣
CAN BE SOLD VIA COMPANY
SHARES TRANSFER (NEGOTIABLE)

Inquiries:
Mr. Lai

☎ +852 9484 5501



BATHROOM 2.0

智能浴室2.0

The days of futuristic bathrooms are not too far away. Imagine entering a bathroom; with just a voice command, the bath faucet turns on and the water level and temperature are adjusted to your personal preferences. Another voice command activates the shower, monitoring the spray and temperature. Meanwhile, the mirror cabinet gives you a weather update and your schedule for the day.

Smart bathroom systems on show at the Consumer Electronics Show 2018 (CES) in Las Vegas earlier this year feature technology that extends well beyond these individual actions – every fixture is also interconnected to predict and analyse the user's behaviour to provide the most enhanced experience possible. This trend is set to continue: expect leading bathroom-product makers to roll out a series of smarter fixtures in the near future.

未來概念的智能浴室快將降臨，試想像當你踏進浴室，只消一個語音指示，浴缸的水龍頭便自動開啟，水位和水溫均調節到適合你的個人喜好；另一個語音指示則即時啟動衛浴花灑，同時調節合適的水力及水溫；與此同時，鏡櫃會顯示最新的天氣資訊以及你當天的日程。

今年初在拉斯維加斯舉行的美國電子消費品展（CES）中展出的智能浴室系統，便披露了未來浴室的概念已不單止局限於個別產品的功能，而是整個浴室的設備和配件會連繫起來，甚至可以預知和分析用家的行為，以進一步提供更佳的用家體驗。未來這個潮流將會更為盛行，各主要衛浴潔具生產商在不久將來將會紛紛推出更多智能浴室設備。

04 SPECIAL FEATURE

Peak of Kau To Shan
九肚山之巔

06 MONTHLY HIGHLIGHT

The Rednaxela, Midlevels West
西半山 帝華臺

08 SPOTLIGHT

Double Joy
雙倍尊貴

10 Southside & The Peak sale

南區及山頂 出售

15 HIGHLIGHT

Villa Veneto, Midlevels West
西半山 威都閣

16 Midlevels Central & West sale

中半山及西半山 出售



5 Easy ways to list your property with The Key :

5個簡單方法在《大宅》刊登您的出售 / 出租物業：

 2152 4818
  2866 0015 Fax
  6891 3639 Whatsapp
  info@landscape-christies.com
 www.landscape-christies.com/sell-to-let

The information, text, photos, analyses and projections contained herein are provided solely for the convenience of prospective clients and no warranty or representation as to their accuracy, correctness or completeness is made by Landscape Christie's International Real Estate, Landscape Surveyors Limited, Landscape Realty Limited or the owners, none of whom shall have any liability or obligation with respect thereto. Interested parties should rely on their own investigations, interpretations and analyses in connection with the purchase or letting thereof. Information has been provided to us by sources deemed reliable, but no warranty or representation is made as to its accuracy, correctness or completeness. These offerings are made subject to contract, correction of errors, omissions, prior sale or lease, change of price or terms or withdrawal from the market without notice. The contents of The Key are for reference only and do not constitute all or any part of a contract. Copyright 2018 Each Office is Independently Owned and Operated

19 Midlevels East &
Happy Valley sale
東半山及跑馬地 出售

19 HIGHLIGHT
Broadwood Park,
Midlevels East
東半山 柏樂苑

20 Redhill Peninsula, Tai Tam
大潭 紅山半島

20 Fontana Garden,
Midlevels East
東半山 豪園



22 FEATURE
A Chinese touch

26 Southside &
The Peak lease
南區及山頂 出租

29 Midlevels Central &
East lease
中半山及東半山 出租

30 French Property
法國物業

32 U.K. Properties
英國物業

36 Japanese Properties
日本物業

**Did
you
know**



We list your homes as
videos online for **FREE**
on our page?

See it on Facebook at

Landscape Christie's International Real Estate



PUBLISHED AND DISTRIBUTED BY



Landscape Christie's International Real Estate C-018733
Tel: +852 2866 0022 Fax: +852 2866 0015
Email: info@landscape-christies.com
Website: www.landscape-christies.com
Address: Units 601-4, 6/F, Sino Plaza,
255-257 Gloucester Road, Causeway Bay, Hong Kong

DESIGNED BY

ARCHITECTURE | DESIGN | PEOPLE
PERSPECTIVE

Tel: +852 2525 0287 Fax: +852 2526 3860
Email: info@perspectiveglobal.com
Website: www.perspectiveglobal.com
Address: Unit B, 1/F Cheung Wah Industrial Building,
10-12 Shipyard Lane, Quarry Bay, Hong Kong

**SCAN HERE
TO SUBSCRIBE
ONLINE**





Boss Design Ltd.
www.boss-interiors.com.hk

design + build



📍 Shop 44, G/F, Homewrold, Site 12, Whampoa Garden, Hunghom, KLN.
☎️ +852-2345 6773 📠 +852-2345 6938 ✉️ info@boss-interiors.com.hk





Residents at Le Cristal can enjoy the panoramic ample green mountainous view of Tai Po Kau Nature Reserve

Peak of Kau To Shan

Le Cap, a hilltop luxury residence overlooking Tolo Harbour, rivals The Peak and Hong Kong's Southside as a desirable location



The Le Cristal apartments are distinguished by elegance, grace and finesse, brought together with a refined execution



From left The apartment residences at Le Cap feature curved architecture and bas-relief works by French artist Michèle Létang; A view of the swimming pool surrounded by Jean Mus' landscaped gardens; The grand lift lobby of Le Cristal features a Lalique chandelier

Sitting atop prestigious Kau To Shan in Sha Tin, Le Cap is an exclusive and secluded low-density residential development embodying French luxury and glamour. Positioned in a gated community on a hilltop and surrounded by natural beauty, Le Cap overlooks scenic Tolo Harbour and offers spectacular views of the surrounding Pat Sin Leng range, while providing privacy and seclusion.

Regarded as the "Master of Grand Luxe" by the Financial Times, renowned French architect and interior designer Pierre-Yves Rochon is the mastermind behind every detail of this joint development by Wing Tai Properties and Manhattan Group, including the architecture, interiors and furnishings. It is Rochon's first project in Hong Kong, and he brings the sophisticated charm of the South of France to the buildings and gardens that are inspired by the art deco movement of the 1920s and 1930s, as well as the modernist architecture of the French Riviera.

The beautiful gardens, evocative of the Mediterranean, are the work of French landscape architect Jean Mus, who has conceived the landscaping as a street reminiscent of the South of France. Also of note are Le Cap's high-ceilinged clubhouse and a mosaic-adorned outdoor swimming pool decorated with aluminium fish artworks.

In addition to 29 houses, Le Cap includes 40 apartment units in four apartment blocks collectively named Le Cristal – taking their cue from the elegant Lalique chandelier in the grand lobby. French artist Michèle Létang has contributed to the space by carving exquisite 11m-tall bas-reliefs for each block, handmade in Europe over two years. Most of the apartments, with a saleable area between 1,597 and 2,214 s.f., comprise four bedrooms (two en suite), a private lift lobby and a living room connecting a round-corner balcony that commands breathtaking views of the green surroundings.

Le Cap 濠瀚

83 Lai Ping Road, Sha Tin

沙田 麗坪路83號

Houses (29 units)

Saleable Area 1,724 - 3,285 s.f.

Apartments (40 units)

Saleable Area 1,597 - 2,214 s.f.

Website www.lecap.com.hk

Inquiries 2752 2288



Breathtaking views of the natural surrounding and verdant slopes



Urban panorama 城市風光



The Rednaxela

帝華臺

1 Rednaxela Terrace,
Midlevels West

西半山 列拿士地臺1號

3 bed, 3 bath,

114 s.f. terrace, 1 car park

Saleable 實用 1,794 s.f.

Sale 售 Open Offer

(Lease 租 \$110,000)

Inquiries 查詢

9319 0605 May Lee 李小姐

Webpage No. 網頁編號 135276

Conveniently situated near the Central-Mid-Levels Escalators and close to Peel Street, The Rednaxela is a 26-storey residential development in a prime location in Sheung Wan, just a few-minutes' walk away from Central and near to cultural hotspots such as PMQ and Tai Kwun.

This penthouse apartment is one of the few and rare triplexes in the building on offer. With a saleable area of 1,794 s.f., the unit enjoys full views of the city and harbour, and is further enhanced by a rooftop outdoor terrace of 114 s.f., equipped with a bar table and a sink countertop – functioning like an extension of the living room and suitable for a

wide range of activities.

The triplex comprises three bedrooms (one en suite), a separate living and dining room, three bathrooms, a maid's room, a study and a covered car park. The premises also offer clubhouse facilities such as an outdoor swimming pool, squash court and playroom.

The flat is decorated in a modern fashion and in excellent internal condition, with false ceiling lights all over, even in bathrooms. The kitchen, connected with the dining room, is spacious and fully fitted and equipped with wood cabinets and appliances.

The penthouse triplex is now available for sale with open offer and for lease at \$110,000 incl.



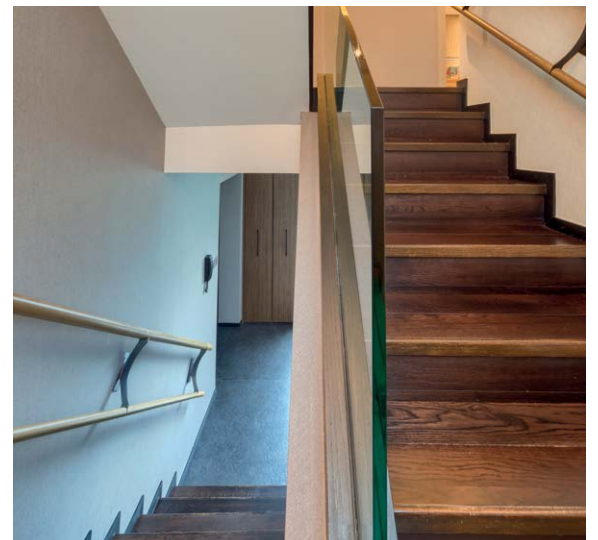
西 半山帝華臺樓高26層，是單幢式住宅項目，毗鄰中區半山行人自動電梯，位處上環卑利街口，佔盡地利之便，徒步往中環只需數分鐘，與文化熱點PMQ元創方及大館僅咫尺之遙。

這豪華的三層高頂層複式住宅是該物業少數罕有放盤的單位，單位實用面積為1,794平方呎，可飽覽維港海景及城際景色，連接戶外的天台平台面積達114平方呎，設有吧枱及鉢盆，可作為客廳的延伸，適合舉辦不同類型的派對活動。

單位附設三間睡房（一間為套房）、獨立客飯廳、三間浴室、一間家傭房、一間書房及一個有蓋車位，物業的會所提供戶外游泳池、壁球場及兒童遊樂室等設施。

單位裝潢時尚高雅，屋內保養簇新，浴室等多處均裝設假天花，明亮寬敞。與飯廳相連的廚房空間闊落，設備齊全，並配備全木廚櫃及全套家電。

該頂層複式單位現以自由出價形式出售及以11萬港元出租。



Flora Garden

渣甸山 慧景園

7 Chun Fai Road

3 bed, 2 bath, 978 s.f. roof, 1 car park

Nicely decorated 3-bedroom penthouse flat with roof terrace in sought after neighbourhood

雅致裝修三房頂層單位，連天台，位處受歡迎地段

Saleable 實用 1,193 s.f.

Sale 售 \$33,000,000

Inquiries 查詢 9648 6082 Christine Chong 莊小姐

Webpage No. 網頁編號 54633



Can be sold via company shares transfer
可以公司轉讓股份形式買賣



Camelot Height

中半山 金鑾閣

66 Kennedy Road

3 bed, 2 bath, 1,127 s.f. roof, 1 car park

Distinguished penthouse flat with roof terrace on easy access

Kennedy Road

尊貴頂層單位，連天台，交通便利

Saleable 實用 1,204 s.f.

Sale 售 \$40,000,000

Inquiries 查詢 9648 6082 Christine Chong 莊小姐

Webpage No. 網頁編號 141354



Celeste Court

跑馬地 蔚雲閣

12 Fung Fai Terrace

3 bed, 2.5 bath, 474 s.f. roof, 1 car park

Unique penthouse with private terrace enjoys panoramic city view

獨特頂層單位，連私家平台，飽覽城市全景

Saleable 實用 1,300 s.f.

Sale 售 \$50,000,000

Inquiries 查詢 9319 0605 May Lee 李小姐

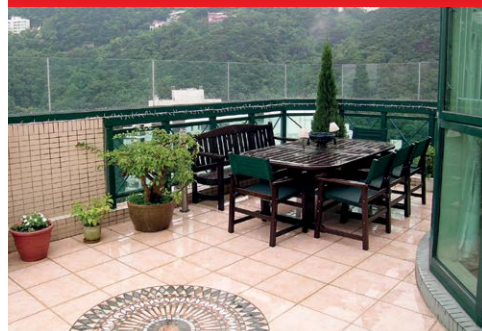
Webpage No. 網頁編號 108271



Can be sold via company shares transfer
可以公司轉讓股份形式買賣



Can be sold via company shares transfer
可以公司轉讓股份形式買賣



Hillsborough Court

中半山 曉峰閣

18 Old Peak Road

3 bed, 2 bath, 646 s.f. roof, 2 car parks

One of a kind duplex penthouse in sought after and tranquil location

別樹一幟頂層複式單位，位處受歡迎及寧靜地段

Saleable 實用 1,874 s.f.

Sale 售 \$82,000,000

Inquiries 查詢 9319 0605 May Lee 李小姐

Webpage No. 網頁編號 23008



Interior design
 constructions
 space planning
 project management
 tendering
 landscaping
 quantity survey



Lucy SY Teo

"Joseph has great aesthetic taste and so very detailed oriented, his super swift responses give me a great sense of security that he will always be ready to help."

Peak road -contemporary classic



Behnaz & Idris

"We have worked with Joe on several projects and would happily work with him again. Every room is sophisticated yet cozy....he is a perfectionist but very easy to work with..."

Modern, vintage & mid-century.....



Behnaz & Idris

"Joseph was able to quickly home in on what was important to us, from functional to aesthetic. We are thrilled with the result as always!"

Crown moldings, paneled walls & parquet floor = Timeless grace



Jennifer & Mandan Fong

"We love your passion towards your work, your ideas are just awesome and I could never imagine my home will look like what it is now."

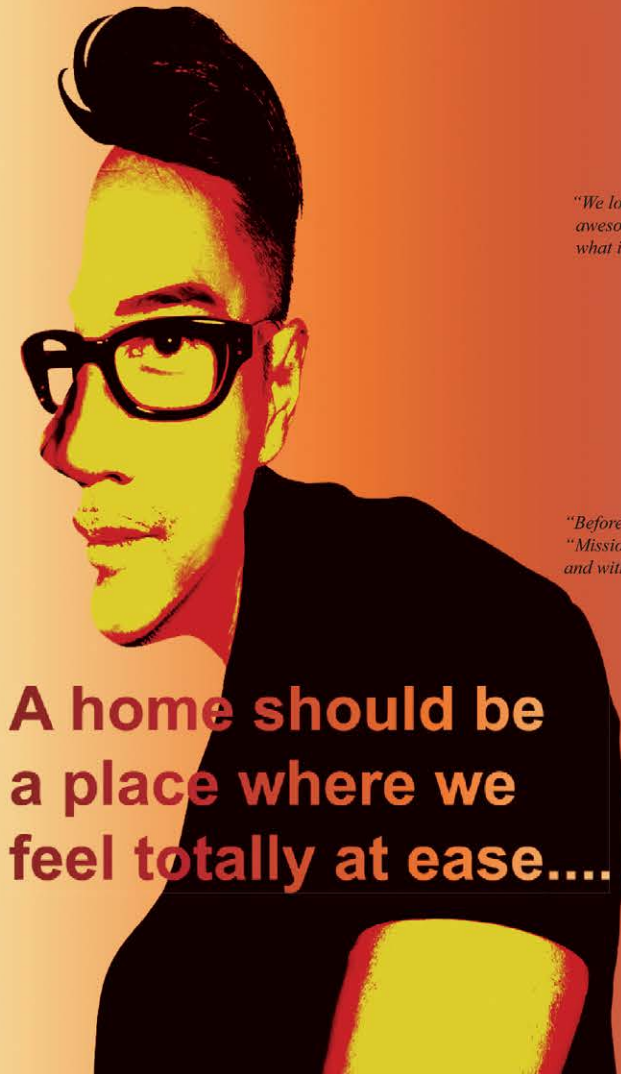
Magazine Gap road -pure elegance



Harry Dinh Khoan

"Before I met Joseph, people said my schedule was a "Mission Impossible", in fact, my place finished 1 week ahead and with meticulous finishes."

Repulse Bay road -les Français



A home should be a place where we feel totally at ease....





Albany Court

薄扶林 雅鑾閣

51 Bisney Road

3 bed, 2 bath,

646 s.f. terrace, 1 car park

Lovely 3-bedroom garden flat in low-rise development and peaceful environment

精品三房花園住宅，密度低，環境怡人

Saleable 實用 1,022 s.f.

Sale 售 \$31,000,000

Inquiries 查詢 9662 2199 David Lau 劉先生

Webpage No. 網頁編號 121105



Pacific View

大潭 浪琴園

38 Tai Tam Road

3 bed, 2 bath, 1 car park

Waterfront 3-bedroom apartment in well planned family estate

海濱三房住宅，位處完善家庭式住宅項目，可租可售

Saleable 實用 1,397 s.f.

Sale 售 \$34,000,000 (Lease 租 \$68,000)

Inquiries 查詢 6517 8785 Karen Shum 沈小姐

Webpage No. 網頁編號 32983



Villa Piubello

春坎角 環角徑1-7號

1-7 Cape Drive

3 bed, 2 bath, 1 car park

Charming 3-bedroom sea view low-rise in tree-lined neighbourhood

迷人三房海景單位，密度低，位處綠樹成蔭地段，可租可售

Saleable 實用 1,450 s.f.

Sale 售 \$38,000,000 (Lease 租 \$76,000)

Inquiries 查詢 9648 6082 Christine Chong 莊小姐

Webpage No. 網頁編號 164924



Ridge Court

淺水灣 冠園

21A-21D Repulse Bay Road

3 bed, 2 bath, 1 car park

Nicely decorated 3-bedroom flat on upper Repulse Bay Road enjoys sweeping sea view

雅致裝修三房單位，眺望遼闊海景

Saleable 實用 1,780 s.f.

Sale 售 \$52,000,000

Inquiries 查詢 9028 0147 Jenson Au 區先生

Webpage No. 網頁編號 160534



Hong Kong Parkview

淺水灣 陽明山莊

88 Tai Tam Reservoir Road

3 bed, 3 bath, 1 car park

Clean and sleek 3-bedroom apartment with deluxe clubhouse facilities in Repulse Bay

時尚三房單位，連豪華會所設施

Saleable 實用 1,886 s.f.

Sale 售 \$56,580,000

Inquiries 查詢 9028 0147 Jenson Au 區先生

Webpage No. 網頁編號 3969



South Bay Palace

淺水灣 南灣御苑

25-31 South Bay Close

4 bed, 3 bath, 1 car park

4-bedroom flat with well received layout in tranquil location

淺水灣四房住宅，間隔實用，地段清幽恬靜

Saleable 實用 1,947 s.f.

Sale 售 \$57,000,000

Inquiries 查詢 9319 0605 May Lee 李小姐

Webpage No. 網頁編號 98835





Repulse Bay Garden

淺水灣 麗景園

18-40 Bellevue Drive

3 bed, 2 bath, 1 car park

Bright and airy 3-bedroom sea view flat close to Repulse Bay Beach

光猛通風三房海景單位，毗鄰淺水灣泳灘

Saleable 實用 2,110 s.f.

Sale 售 \$61,800,000

Inquiries 查詢 9028 0147 Jenson Au 區先生



Belgravia

淺水灣 南灣道57號

57 South Bay Road

3 bed, 2 bath, 1 car park

Modern sea view 3-bedroom apartment at quiet enclave

時尚海景三房單位，地段清幽

Saleable 實用 1,875 s.f.

Sale 售 \$75,000,000

Inquiries 查詢 9803 2216 Annie Lee 李小姐

Webpage No. 網頁編號 123511



Beaulieu

春坎角 蒲苑

57-63 Chung Hom Kok Road

3 bed, 2.5 bath, 1 garage

Exclusive garden townhouse in tranquil and verdant Chung Hom Kok

別具一格花園洋房，位處寧靜翠綠春坎角地段

Saleable 實用 1,956 s.f.

Sale 售 \$80,000,000

Inquiries 查詢 9803 2216 Annie Lee 李小姐

Webpage No. 網頁編號 33739



Pine Crest

淺水灣 松苑

65 Repulse Bay Road

4 bed, 3 bath,

2,020 s.f. garden, 1 car park

Rare find spacious apartment with huge private garden in Repulse Bay

淺水灣罕有寬敞住宅，連偌大私家花園

Saleable 實用 1,917 s.f.

Sale 售 \$88,000,000

Inquiries 查詢 9028 0147 Jenson Au 區先生

Webpage No. 網頁編號 171237



Grosvenor Place

淺水灣 淺水灣道117號

117 Repulse Bay Road

4 bed, 4 bath, 1 car park

High floor zone 4-bedroom apartment with balcony overlooking sublime sea view

高層四房單位，連露台，俯瞰壯麗海景

Saleable 實用 1,974 s.f.

Sale 售 \$120,000,000

Inquiries 查詢 9026 2912 Michelle Chung 鍾小姐

Webpage No. 網頁編號 139961



Coral Villas 春坎角 珊瑚小築

27 Horizon Drive

4 bed, 4 bath,

1,000 s.f. roof, 2 car parks

Rarely available 4-bedroom townhouse with private courtyard and rooftop in verdant and serene area

罕有四房洋房，連私家庭園及天台，位處寧靜翠綠地段

Saleable 實用 3,379 s.f.

Sale 售 \$175,000,000

Inquiries 查詢 9648 6082 Christine Chong 莊小姐

Webpage No. 網頁編號 35801





King's Court 薄扶林 景緻閣

9 Consort Rise

2 bed, 2 bath,
846 s.f. roof, 2 car parks



Lovely 2-bedroom low-rise with internal staircase to private roof terrace at quiet enclave
精品兩房低密度單位，連內置樓梯往私家天台，地段寧謐

Saleable 實用 1,053 s.f.

Sale 售 \$20,000,000

Inquiries 查詢 9648 6082 Christine Chong 莊小姐

Webpage No. 網頁編號 48885

Can be sold via company shares transfer
可以公司轉讓股份形式買賣



The Redhill Peninsula

大潭 紅山半島

18 Pak Pat Shan Road

4 bed, 3.5 bath,
1,326 s.f. garden, 2 car parks



Tastefully decorated waterfront house with ample alfresco space in prestigious location
品味裝修海濱洋房，享充裕戶外空間，地段顯赫

Saleable 實用 3,135 s.f.

Sale 售 \$115,000,000

Inquiries 查詢 9803 2216 Annie Lee 李小姐

Webpage No. 網頁編號 5440



Eredine

山頂 加列山道38號

38 Mount Kellett Road

4 bed, 4.5 bath, 1 car park



Rare 4-ensuite apartment with chic and classic decorations overlooking Southside sea view
罕有四套房單位，裝修經典雅致，俯瞰南區海景

Saleable 實用 2,893 s.f.

Sale 售 \$125,000,000

Inquiries 查詢 9093 3381 Stephen Chan 陳先生

Webpage No. 網頁編號 23687



Larvotto

鴨洲 南灣

8 Ap Lei Chau Praya Road

4 bed, 3.5 bath,
552 s.f. terrace, 1 car park



Elegant 4-bedroom apartment with marvelous view over the marina and the South China Sea
典雅四房住宅，飽覽遊艇及南中國海美景

Saleable 實用 2,595 s.f.

Sale 售 \$150,000,000

Inquiries 查詢 9662 2199 David Lau 劉先生

Webpage No. 網頁編號 133869

Can be sold via company shares transfer
可以公司轉讓股份形式買賣



Villa Rosa 大潭 玫瑰園

88 Red Hill Road

4 bed, 4.5 bath,
480 s.f. roof, 2 car parks



Exclusive hilltop garden townhouse in secluded and tree-lined location
獨特花園洋房，環境清幽，位處綠樹成蔭地段，可租可售

Saleable 實用 3,314 s.f.

Sale 售 \$170,000,000 (Lease 租 \$250,000)

Inquiries 查詢 9093 3381 Stephen Chan 陳先生

Webpage No. 網頁編號 173205

Can be sold via company shares transfer
可以公司轉讓股份形式買賣



Detached House in Stanley

赤柱獨立屋

500 s.f. garden, 2 garages



Contemporary single garden house with private pool at secluded location
當代時尚獨立屋，連私家游泳池，地段隱逸寧靜

Saleable 實用 2,060 s.f.

Sale 售 ~~\$195,000,000~~ \$175,000,000

Inquiries 查詢 9871 6828 Louis Wong 黃先生

Webpage No. 網頁編號 180485

South Bay Towers

淺水灣 南灣大廈

59 South Bay Road

2 bed, 2 bath, 1 car park

Nicely decorated 2-bedroom apartment with nice sea view and green view

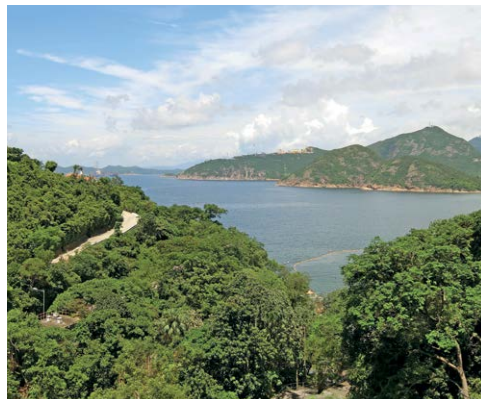
雅致裝修兩房單位，眺望優美海景及翠綠景

Saleable 實用 1,112 s.f.

Sale 售 \$30,000,000

Inquiries 查詢 9871 6828 Louis Wong 黃先生

Webpage No. 網頁編號 126754

Can be sold via company shares transfer
可以公司轉讓股份形式買賣SOLE
AGENT**Repulse Bay**

淺水灣

3 bed, 2.5 bath, 1 car park

Well decorated apartment with comprehensive facilities overlooking sublime Southside sea view

優質裝修住宅，享完善設施，俯瞰優美南區海景，租售均可

Saleable 實用 1,390 s.f.

Sale 售 Open Offer (Lease 租 \$75,000)

Inquiries 查詢 9011 5499 Yuky Chung 鍾小姐

Webpage No. 網頁編號 100164

**Ruby Court**

淺水灣 嘉麟閣

55 South Bay Road

3 bed, 2.5 bath, 1 car park

Saleable 實用 1,390 s.f.

Sale 售 Open Offer

Inquiries 查詢

Louis Wong 黃先生 9871 6828

Yuky Chung 鍾小姐 9011 5499

**Picturesque Scenery 美景如畫**

Situated in a green and quiet corner of South Bay Road, Ruby Court enjoys unobstructed South Bay seaview and greenery mountain view. Spanning a saleable area of 1,390 s.f., these two premium apartments own efficient layout of dining area with fitted kitchen, three bedrooms including one ensuite, two bathrooms, powder room, maid's room and utility area respectively.

Amid the well-appointed facilities, it only takes a few steps walking to the beach to enjoy sunbathing and barbecue. Enjoying such a convenient location, short driving distance can easily bring you to shops and entertainments in Repulse Bay, Stanley and 'Tai Tam. Residents' shuttle bus services to Central and Repulse Bay are available.

淺水灣嘉麟閣座落於茂綠寧靜的南灣道，享有清靜雅致的南灣海景及開揚山景。兩個優質單位的實用面積均為1,390平方呎，室內空間寬闊，由客廳的大玻璃窗可飽覽南灣怡人海景，飯廳及廚房間格實用，三間客房其中一間為套房、兩間浴室、客用化妝間、家備房及工作間。

不僅備有完善會所設施，數步之遙便可到泳灘享受日光浴及戶外燒烤樂，極之方便。駕車瞬間可達淺水灣，赤柱及大潭的商店及娛樂設施，住客更可享穿梭巴士服務往中環及淺水灣。

Shouson Peak

壽臣山

5 bed, 4.5 bath, 2 car parks

Brand new townhouse with private lift, garden and swimming pool in tranquil Shouson Hill

全新尊貴洋房，連私家升降機、花園及游泳池，地段寧靜，租售均可

Saleable 實用 4,111 s.f.

Sale 售 \$438,000,000 (Lease 租 \$450,000 excl.)

Inquiries 查詢 9011 5499 Yuky Chung 鍾小姐

Webpage No. 網頁編號 140567



Strawberry Hill

山頂 紅莓閣

8 Plunkett's Road

3 bed, 2.5 bath, 400 s.f. garden, 2 car parks

Colonial 3-bedroom townhouse in well managed estate at the Peak
英式三房洋房，位處山頂尊貴項目

Saleable 實用 2,945 s.f.

Sale 售 \$195,000,000

Inquiries 查詢 9028 0147 Jenson Au 區先生

Webpage No. 網頁編號 5733



Repulse Bay Road

淺水灣道

4 bed, 5.5 bath, 280 s.f. garden, 4 car parks

Fantastic townhouse in luxury new decor and furnishing overlooking stunning sea view

淺水灣尊貴洋房，裝修奢華簇新，俯瞰優美海景，可租可售

Saleable 實用 2,821 s.f.

Sale 售 \$380,000,000 (Lease 租\$400,000)

Inquiries 查詢 6188 1398 Josephine Yuen 阮小姐

Webpage No. 網頁編號 109191



Barker Road

山頂 白加道

4 bed, 4.5 bath, 1,214 s.f. terrace, 2 car parks

Designer decorated extravagant house enjoys fantastic Victoria Harbour view

設計師裝修豪華洋房，坐擁迷人維港美景

Saleable 實用 5,706 s.f.

Sale 售 \$868,000,000

Inquiries 查詢 6188 1398 Josephine Yuen 阮小姐

Overthorpe

山頂 豐林閣

24-28 Mount Austin Road

5 bed, 4 bath, 1,624 s.f. garden, 2 car parks

Harbour view townhouse with tasteful decorations above the fog line

山頂海景洋房，配以品味裝修，地段尊貴顯赫，聳立於霧線之上

Saleable 實用 2,242 s.f.

Sale 售 Open Offer

Inquiries 查詢 6188 1398 Josephine Yuen 阮小姐



Can be sold via company shares transfer
可以公司轉讓股份形式買賣

APPOINTED
AGENT



Carmelia

赤柱 赤柱村道60號

60 Stanley Village Road

4 bed, 4.5 bath, 2 car parks

Rare colonial townhouse in tranquil area with spacious garden and terraces

罕有英式洋房，地段寧謐，連偌大平台花園

Saleable 實用 4,158 s.f.

Sale 售 Open Offer

Inquiries 查詢 9871 6828 Louis Wong 黃先生

Webpage No. 網頁編號 84478



Unconfined space 空間無限

The huge semi-circular balcony offering stunning city and harbour views is the highlight of this newly renovated apartment furnished in classical style in Mid-Levels West. With a saleable area of 2,320 s.f. and excellent efficiency ratio of 90 per cent, it comprises four bedrooms (one en suite), a combined living and dining room, three bathrooms, a maid's room, a utility room, two covered car parks, and a kitchen with modern-looking wood cabinets and a wall-length wine cabinet.

這間於西半山威都閣經重新裝修的偌大單位，採殖民地風格裝潢，屋內的半圓型露台更是全屋的焦點所在，可飽覽城際和海港景色。單位實用面積達2,320平方呎，實用率更高達九成，設有四間睡房，其中一間為套房、相連的客飯廳、三間浴室、一間家傭房、一間多用途房及兩個有蓋車位，廚房則配上時尚木製廚櫃及一個落地大酒櫃。

Villa Veneto 威都閣

3 Kotewall Road, Midlevels West

西半山 旭蘇道3號

4 bed, 3 bath, 2 car parks

Saleable 實用 2,320 s.f.

Sale 售 \$81,000,000

Inquiries 查詢 6188 1398 Josephine Yuen 阮小姐

Webpage No. 網頁編號 189086





Greenland Court

中半山 恒翠園

56-58 Macdonnell Road

3 bed, 2.5 bath, 1 car park

Rare find 3-bedroom (2-ensuite) apartment at convenient location

罕有三房（兩套房）單位，交通便利

Saleable 實用 1,083 s.f.

Sale 售 \$27,800,000

Inquiries 查詢 9662 2199 David Lau 劉先生

Webpage No. 網頁編號 37594



Monticello

中半山 滿峰台

48 Kennedy Road

2 bed, 2 bath, 1 car park

City view 3-bedroom flat with balcony on convenient Kennedy Road

城市景三房單位，連露台，交通便利，可租可售

Saleable 實用 1,075 s.f.

Sale 售 \$28,800,000 (Lease 租 \$60,000)

Inquiries 查詢 6517 8785 Karen Shum 沈小姐

Webpage No. 網頁編號 144057



Robinson Garden Apartment

西半山 羅便臣道花園大廈

3-3G Robinson Road

3 bed, 2 bath, 1 car park

Spacious 3-bedroom apartment with open city view and green view

寬敞三房單位，享開揚城市景及翠綠景，可租可售

Saleable 實用 1,587 s.f.

Sale 售 \$38,000,000 (Lease 租 \$60,000)

Inquiries 查詢 6517 8785 Karen Shum 沈小姐

Webpage No. 網頁編號 144415



Man Yuen Garden

中半山 文苑花園

52A-52B Kennedy Road

3 bed, 2 bath, 1 car park

Lovely 3-bedroom apartment on convenient Kennedy Road

精品三房單位，位處便利堅尼地道

Saleable 實用 1,669 s.f.

Sale 售 \$38,000,000

Inquiries 查詢 9803 2216 Annie Lee 李小姐

Webpage No. 網頁編號 64947



Ning Yeung Terrace

西半山 寧養臺

78 Bonham Road

4 bed, 5 bath, 161 s.f. terrace

Large and spacious 4-bedroom duplex apartment in upscale location

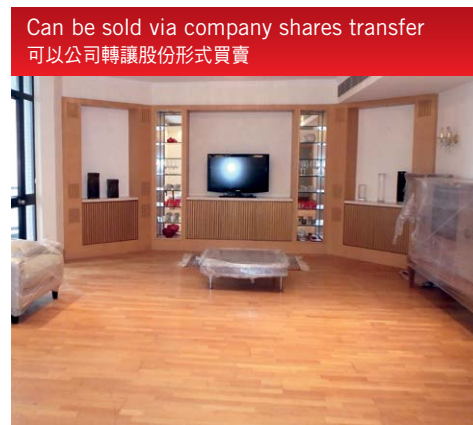
偌大寬敞四房複式單位，地段尊貴顯赫，可租可售

Saleable 實用 2,171 s.f.

Sale 售 \$50,000,000 (Lease 租 \$78,000)

Inquiries 查詢 6517 8785 Karen Shum 沈小姐

Webpage No. 網頁編號 140486



Tregunter Tower 1

中半山 地利根德閣 1座

14 Tregunter Path

4 bed, 2.5 bath, 1 car park

Luxurious apartment with balcony and top notch facilities

中半山豪華住宅連露台，享頂級會所設施，可租可售

Saleable 實用 2,330 s.f.

Sale 售 \$69,000,000 (Lease 租 \$90,000)

Inquiries 查詢 9319 0605 May Lee 李小姐

Webpage No. 網頁編號 169253



Can be sold via company shares transfer
可以公司轉讓股份形式買賣



80 Robinson Road

西半山 羅便臣道80號

3 bed, 2.5 bath,
572 s.f. roof, 2 car parks

Harbour view penthouse duplex with sky terrace on convenient Robinson Road
頂層複式海景住宅，連空中花園，位處便利羅便臣道

Saleable 實用 1,366 s.f.

Sale 售 \$75,000,000

Inquiries 查詢 6517 8785 Karen Shum 沈小姐

Webpage No. 網頁編號 104923



Can be sold via company shares transfer
可以公司轉讓股份形式買賣



Rose Gardens

中半山 玫瑰別墅

9 Magazine Gap Road
3 bed, 2 bath, 1 car park

High-efficiency 3-bedroom apartment with balcony in prestigious location
高實用率三房住宅，連露台，地段尊貴顯赫

Saleable 實用 2,235 s.f.

Sale 售 \$76,000,000

Inquiries 查詢 9011 5499 Yuky Chung 鍾小姐

Webpage No. 網頁編號 125468



Can be sold via company shares transfer
可以公司轉讓股份形式買賣



Tavistock 2

中半山 騰皇居2座

10A Tregunter Path
3 bed, 2 bath, 1 car park

Harbour view apartment with facilities in prime neighbourhood
海景住宅連設施，位處優越地段

Saleable 實用 1,520 s.f.

Sale 售 \$78,000,000

Inquiries 查詢 9319 0605 May Lee 李小姐

Webpage No. 網頁編號 27606



Cliffview Mansions

西半山 康苑

21-25 Conduit Road

4 bed, 3 bath

Renovated spacious 4-bedroom apartment in Midlevels West
簇新裝修四房單位，間隔偌大

Saleable 實用 2,872 s.f.

Sale 售 \$78,600,000

Inquiries 查詢 9028 0147 Jenson Au 區先生

Webpage No. 網頁編號 31456



Piccadilly Mansion

西半山 碧苑

4-6 Po Shan Road

4 bed, 3 bath, 1 car park

Spacious 4-bedroom Victoria Harbour view apartment at quiet location
寬敞四房維港景單位，地段寧靜

Saleable 實用 2,499 s.f.

Sale 售 \$80,000,000

Inquiries 查詢 9026 2912 Michelle Chung 鍾小姐

Webpage No. 網頁編號 35976



Can be sold via company shares transfer
可以公司轉讓股份形式買賣



Regent On The Park

中半山 御花園

9A Kennedy Road

4 bed, 4 bath, 1 car park

Popular 4-bedroom apartment in convenient location
受歡迎四房單位，交通便利

Saleable 實用 2,072 s.f.

Sale 售 \$90,000,000

Inquiries 查詢 9319 0605 May Lee 李小姐

Webpage No. 網頁編號 18550



Clovelly Court

中半山 嘉富麗苑

12 May Road

5 bed, 3 bath, 1 car park

Rare on market 5-bedroom harbour view flat ideal for large family

罕有五房海景單位，適合大家庭

Saleable 實用 2,348 s.f.

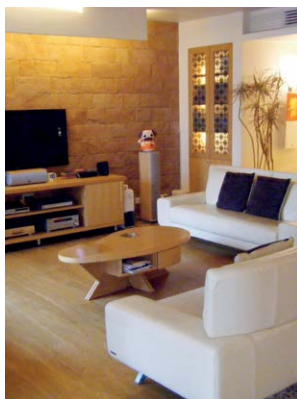
Sale 售 \$110,000,000

Inquiries 查詢 9803 2216 Annie Lee 李小姐

Webpage No. 網頁編號 39392



Can be sold via company shares transfer
可以公司轉讓股份形式買賣



Grenville House

中半山 嘉慧園

1 & 3 Magazine Gap Road

4 bed, 3 bath, 1 car park

Large and practical 4-bedroom flat ideal for large family

寬敞實用四房單位，大家庭首選，可租可售

Saleable 實用 3,349 s.f.

Sale 售 \$170,000,000 (Lease 租 \$140,000)

Inquiries 查詢 9093 3381 Stephen Chan 陳先生

Webpage No. 網頁編號 127086



Kennedy Park at Central

中半山 君珀

4 Kennedy Road

4 bed, 3 bath, 594 s.f. roof, 3 car parks

Unique 4-bedroom duplex apartment with private sky garden off

living room in mint condition

獨特四房複式住宅，客廳連接私家空中花園，裝修簇新

Saleable 實用 2,715 s.f.

Sale 售 \$200,000,000

Inquiries 查詢 9662 2199 David Lau 劉先生



Can be sold via company shares transfer
可以公司轉讓股份形式買賣

Can be sold via company shares transfer
可以公司轉讓股份形式買賣



Convention Plaza Duplex

灣仔 會景閣複式

1 Harbour Road

4 bed, 3 bath, 1 maid's room with bathroom

One of a kind duplex with tasteful decorations and stunning city

view, close to future MTR Shatin to Central Link

品味裝修獨特複式住宅，飽覽城市美景，毗鄰未來港鐵沙中線

Saleable 實用 2,794 s.f.

Sale 售 \$138,000,000

Inquiries 查詢 6188 1398 Josephine Yuen 阮小姐

Webpage No. 網頁編號 49762



The Leighton Hill

跑馬地 禮頓山

2B Broadwood Road

3 bed, 2 bath, 1 car park

Racecourse view apartment with comprehensive clubhouse facilities in well planned and management development

馬場景優質住宅，會所設施完善，位處管理完善住宅項目

Saleable 實用 1,127 s.f.

Sale 售 \$38,800,000

Inquiries 查詢 6517 8785 Karen Shum 沈小姐

Webpage No. 網頁編號 42203



Valley View 東半山 欣景台

4A-04D Wong Nai Chung Gap Road

3 bed, 4 bath, 1 car park

Designer decorated 3 ensuite with 1 study room apartment and a covered carpark in low density neighbourhood. The building has been completely refurbished.

設計師品味三套房住宅，連書房及有蓋車位，位處低密度社區，屋苑已全新翻新

Saleable 實用 1,912 s.f.

Sale 售 \$75,000,000

Inquiries 查詢 9026 2912 Michelle Chung 鍾小姐

Webpage No. 網頁編號 151940



Can be sold via company shares transfer
可以公司轉讓股份形式買賣



Serene space 恬靜閒適

This apartment in Broadwood Park takes advantage of its quiet Happy Valley neighbourhood, yet is within walking distance of Causeway Bay. The spacious unit has a distant harbour view and overlooks the Hong Kong Stadium with plenty of greenery, and boasts a saleable area of 2,414 s.f. and enjoys high efficiency, equipping with separated living and dining room, three en-suite bedrooms, a balcony, three bathrooms, a maid's room, a utility room, a study and two covered car parks. The flat is stylishly decorated, fully furnished and in excellent condition.

這個位於柏樂苑的大單位，盡佔跑馬地靜中帶旺的優點，同時可步行往銅鑼灣，出入便捷。單位間格闊落實用，實用面積達2,414平方呎，可眺望海景及香港大球場美景，四周被翠綠環抱。大宅設有三間套房、獨立客廳、露台、三間浴室、一間家傭房、一個多用途房、一間書房及兩個有蓋車位，裝潢時尚優雅，且保養簇新。

Broadwood Park 柏樂苑

38 Broadwood Road, Midlevels East

東半山 樂活道38號

3 bed, 3 bath, 2 car parks

Saleable 實用 2,414 s.f.

Sale 售 \$95,000,000

Inquiries 查詢 9093 3381 Stephen Chan 陳先生

Webpage No. 網頁編號 34728





Seafront delight 蔚藍海岸

Situated in the tranquil setting of Redhill Peninsula, this lavish 2,876 s.f. (saleable area) townhouse offers glorious sea and mountain views, as well as four bedrooms (two ensuite), three-and-a-half bathrooms, a separate living and dining room, a family room, a balcony, a maid's room, a utility room and a garage with three car parks.

One of the greatest attractions is the lush private garden, where residents can host outdoor parties and gatherings. Kitchen is also fully-fitted and equipped. The townhouse is in move-in condition.

位於寧靜的紅山半島，這座寬敞洋房實用面積廣達2,876平方呎，坐享優美海景及山巒景。洋房設四間睡房(兩間套房)、三間半浴室、分層客廳、家庭廳、露台、家傭房、多用途房及可容納三輛車的車庫。

其中最引人入勝的賣點是鬱鬱蔥蔥的私家花園，住戶可舉辦戶外派對及聚會，盡享奢閒之樂。廚房設備亦相當齊全。洋房裝修簇新，可即時入住。

The Redhill Peninsula

紅山半島

18 Pak Pat Shan Road, Tai Tam

大潭 白筆山道18號

4 bed, 3.5 bath, 2,002 s.f. garden, 1 garage (3 carparks)

Saleable 實用 2,876 s.f.

Rent 租 \$138,000 incl. (有匙引看)

Inquiries 查詢 6188 1398 Josephine Yuen 阮小姐

Webpage No. 網頁編號 187638



Classic abode 古雅風尚

Nestled in a quiet enclave off Tai Hang Road in Mid-Levels East, this spacious apartment in Fontana Gardens lies within walking distance to Causeway Bay. Surrounded by lush greenery, the flat spans a saleable area of 2,560 s.f. with a high efficiency rate of 85% and consists of four bedrooms with one being ensuite, a combined living and dining room, a large balcony, two bathrooms, an utility room and a maid's room. The apartment is fitted with basic classical style furnishing with a sizable kitchen.

豪園位於東半山坑道的清幽地段，徒步往銅鑼灣僅咫尺之遙。這間偌大單位被綠樹環抱，實用面積達2,560平方呎，實用率高達85%，單位設有四間睡房，其中一間為套房、相連的客廳、寬闊露台、兩間浴室、一間多用途室及一間家傭房。單位採古典裝潢，散發古雅情懷，連實用廚房，空間十足。

Can be sold via company shares transfer
可以公司轉讓股份形式買賣

Fontana Gardens 豪園

1-25 Ka Ning Path, Midlevels East 東半山 嘉寧徑1-25號

4 bed, 2 bath, 1 carpark

Saleable 實用 2,560 s.f.

Sale 售 \$74,000,000

Inquiries 查詢 9803 2216 Annie Lee 李小姐

Webpage No. 網頁編號 46004



Top-notch lifestyle

出類拔萃

Amidst the hustle and bustle cosmopolitan in Hong Kong, you will live rejoicing every day if you explore a quiet and subtle home sweet home.

Perched on Black's Link at Deep Water Bay, sitting on the living room and overlooking the stunning views of Deep Water Bay golf club, the secluded beach and rolling hills are the most relaxed activities in this newly renovated house which offers exclusive privacy. What's more? Do planting and growing your own art garden that gives you pleasure and satisfaction!

Spanning a spacious saleable area of 4,780 s.f., this luxurious house is highly accessible to connect every living space with a private lift. You only take a few steps walking to swimming pool and tennis court to enjoy your leisure time, not to forget the picturesque views!

The sumptuous house boasts five massive bedrooms including three ensuite bedrooms, four bathrooms and a powder room, two family rooms, separate living and dining rooms and two covered car parks. Kitchen is also fully fitted with tall wall cabinets and a unique kitchen island.

倘若你想在這繁華都市裡找個世外桃園，這寧靜隱逸的安樂窩足以令你整天賞心樂事。

這聳立於深水灣布力徑的全新裝修海景洋房，坐擁高私隱度，安坐家中便可遠眺深水灣高爾夫俱樂部、恬靜怡人的海灘和群山起伏的山巒美景，閒時更可陶冶性情培養對園藝的興趣，為自己的家居打造賞心悅目的園藝花園。

這罕有地段的洋房實用面積廣達4,780平方呎，設有私家升降機通往各樓層，舉步可達游泳池及網球場，絕對是舒展身心的好地方，同時亦不忘飽覽風光明媚的優美景色!

洋房間隔設計實用，設五間偌大睡房，包括三間套房、四間浴室及化妝間、兩個家庭廳、客飯廳及兩個有蓋車位。廚房設備齊全，連落地廚櫃及別具一格的中島型廚房櫃台。



38 Black's Link, Deep Water Bay

深水灣 布力徑38號

5 bed, 4.5 bath, 2 car parks

Saleable 實用 4,780 s.f.

Rent 租 \$398,000 incl.

Inquiries 查詢 9011 5499 Yuky Chung 鍾小姐

Webpage No. 網頁編號 103456



A Chinese touch

A dozen smart, stylish contemporary products from across the border showcase some of China's most creative talents

Luk Studio: The Valet's Scaffold

Shanghai-based Hong Kong native Christina Luk believes in a holistic approach to design. Perfect for small flats lacking entry storage, this delicate yet functional take on a mudroom allows users to dress up the wooden branches with coats, hats, shoes and yoga mats right by their front door.

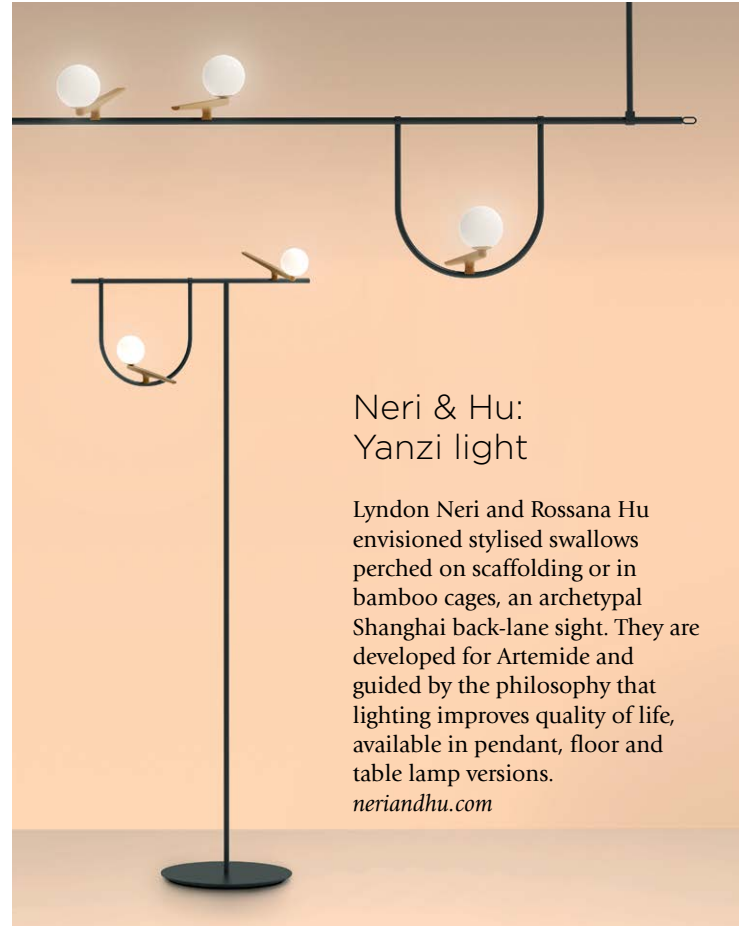
lukstudiodesign.com



Chen Pengfei: Forlight Portable Tea Set

Awarded gold at Red Dot's 2017 China Good Design awards, Chen Pengfei designed Forlight for tea lovers who want to take their brew wherever they go. Its minimal design in celadon with solid wood detailing lends the set of cup, water vessel, pot and tea towel a timeless quality.

hsj.xidbw.org



Neri & Hu: Yanzi light

Lyndon Neri and Rossana Hu envisioned stylised swallows perched on scaffolding or in bamboo cages, an archetypal Shanghai back-lane sight. They are developed for Artemide and guided by the philosophy that lighting improves quality of life, available in pendant, floor and table lamp versions.

neriandhu.com



Jomoo Kitchen & Bath: Free Control Kitchen Tap

This push on/off control can attach, via magnetic suction, to any surface within 10 metres of the tap. Its ergonomic design makes it ideal for children, people with reduced motor skills or anyone who wants to hygienically turn on the tap without touching it.

jomoo.com

Slowood: Volcano candle stand

Liu Lingchen and Wang Chenglong of Slow Architects love experimenting with wood with their houseware brand Slowood. Using only hardwood from sustainable forests, their Volcano black walnut and American maple candle holder and music box is a play on the classic conical volcano form. slowarchitects.com



Onemile: Halo City bicycle

A gold winner at Red Dot's 2017 China Good Design, Beijing-based Onemile envisions a bicycle for contemporary city living. The scooter can be folded into two sections to a length of less than 1m, weighs only 15.5kg, and carries a maximum load of 110kg. onemilebike.com

Interval Architects: Mountain and Water table

Shanghai-based architects Oscar Ko and Gu Yunduan occasionally dabble in furniture design. This coffee table was inspired by the tranquil reflections of hills on water, conveying both motion and stillness through the dynamism of serpentine wood panels and the calmness of flat glass. interval-architects.com



Li Naihan: CCTV Wardrobe

Inspired by the Big Trousers, the moniker Beijingers have affectionately given the CCTV Headquarters, this is Beijing designer Li Naihan's homage to OMA's iconic structure. One of six pieces from her I am a Monument series, the continuous-loop wardrobe combines traditional Chinese craftsmanship with contemporary aesthetics, and adds humour to the daily act of dressing. naihanli.com

ARCHITECTURE | DESIGN | PEOPLE **PERSPECTIVE**

For more information about interior and design inspiration, don't miss the September issue of *Perspective* magazine and check out our website at www.perspectiveglobal.com





二合一當代奢華臨海居停

Two Become One Contemporary Luxury Waterfront Detached House

Covered by nearly 13,000 hectares of beautiful natural scenery, stunning seascapes and charming villages, Clear Water Bay has long been regarded as the "back garden of Hong Kong".

Surrounded by vast conservation area with lush greenery, The Portofino, inspired by the famous Italian Riviera, owns a beautiful panoramic view. It situated at the low density residential area with good privacy yet conveniently located.

This unique four-storey waterfront two-in-one detached house enjoys a magnificent 270-degree panoramic seaview exclusively overlooking South China Sea. Spanning a total of 7,400 s.f. saleable area (Approx.), this detached house has 2 enormous master bedrooms, 6 ensuite guest bedrooms, 1 guest room and 2 study rooms. All bedrooms and living and dining rooms enjoy ample natural lighting and full sea views. There are ample of leisure space including 2 private outdoor swimming pools, a huge garden capable to cater various activities, and 8 to 10 parking lots.

清水灣地理位置得天獨厚，四周被13,000公頃的翠綠山巒、水清沙幼的海灘及和諧寧靜環境所組成，獲得「香港後花園」的美譽。

項目是位處大自然保護區的 - 柏濤灣獨幢式董事屋，被「靜謐隱密」的綠化帶所環抱，私密式佈局及海天一體的景致源自意大利著名海邊小鎮，而卻兼備快速接駁到市區的優點。

這座絕無僅有的四層式二合一相連臨海花園別墅，前臨270度一望無際的蔚藍海岸景色。洋房擁有約7,400呎實用面積，包括兩間偌大的主人套房及六間獨立客套房、一間客房及兩間書房。所有睡房及客飯廳都享有充裕自然光線及迷人全海景致。另設有相連寬闊的戶外活動空間包括兩個原則私人戶外游泳池，接連一個宴會式巨型花園及私屬車房可泊八至十輛車 - 彌足珍貴!

Clear Water Bay panoramic sea view Detached House 清水灣無敵海景洋房



Saleable 實用 (Approx.)

House 1: 3,708 s.f.

House 2: 3,708 s.f.

Total: 7,416 s.f.

Sale 售 HK\$238,000,000

Inquiries 查詢 9484 5501 Mr. Lai 黎先生

Sold via company shares transfer (Negotiable)
可以公司轉讓股份形式買賣 (可議)





Repulse Bay Garden

淺水灣 麗景園

18-40 Belleview Drive

3 bed, 2 bath, 2 car parks

Sea view apartment with 3 bedrooms in sought after estate

三房海景住宅，位處受歡迎住宅項目，可租可售

Saleable 實用 2,049 s.f.

Rent 租 \$90,000 (Sale 售\$72,000,000)

Inquiries 查詢 9803 2216 Annie Lee 李小姐

Webpage No. 網頁編號 121082



Pine Crest

淺水灣 松苑

65 Repulse Bay Road

4 bed, 3 bath, 2 car parks

High floor 4-bedroom sea view flat on upper Repulse Bay Road

高層四房海景單位，位處淺水灣道頭段

Saleable 實用 1,917 s.f.

Rent 租 \$105,000 incl.

Inquiries 查詢 9026 2912 Michelle Chung 鍾小姐

Webpage No. 網頁編號 21271



Celestial Garden

淺水灣 詩禮花園

5 Repulse Bay Road

4 bed, 2 bath, 1 car park

Lovely 4-bedroom apartment on upper Repulse Bay Road

精品四房住宅，位處淺水灣道頭段，可租可售

Saleable 實用 1,962 s.f.

Rent 租 \$120,000 (Sale 售\$90,000,000)

Inquiries 查詢 9093 3381 Stephen Chan 陳先生

Webpage No. 網頁編號 31648



The Somerset

淺水灣 怡峰

67 Repulse Bay Road

3 bed, 2 bath, 1 car park

Unique 3-bedroom duplex apartment with fantastic sea view

獨特三房複式住宅，眺望迷人海景

Saleable 實用 1,985 s.f.

Rent 租 \$120,000 incl.

Inquiries 查詢 9011 5499 Yuky Chung 鍾小姐

Webpage No. 網頁編號 123934



The Redhill Peninsula

大潭 紅山半島

18 Pak Pat Shan Road

4 bed, 3.5 bath,

1,869 s.f. garden, 1 garage

Full sea view garden house with private pool and upgraded kitchen

全海景花園洋房，連私家游泳池，廚房裝修簇新

Saleable 實用 3,013 s.f.

Rent 租 \$150,000 incl.

Inquiries 查詢 9026 2912 Michelle Chung 鍾小姐

Webpage No. 網頁編號 741



Repulse Bay Duplex

淺水灣複式

3 bed, 3.5 bath, 1 car park

Deluxe waterfront sea view duplex

close to Repulse Bay beach

奢華海濱複式海景單位，毗鄰淺水灣海灘

Saleable 實用 3,463 s.f.

Rent 租 \$210,000 incl.

Inquiries 查詢 9011 5499 Yuky Chung 鍾小姐

Webpage No. 網頁編號 44023





The Beachfront

淺水灣 壁池

7 Belleview Drive

4 bed, 4 bath, 321 s.f. garden,
1 garage (3 car parks)

Luxurious and majestic townhouse with
splendid view of Repulse Bay Beach
豪華尊貴洋房，飽覽壯麗淺水灣泳灘美景

Saleable 實用 2,821 s.f.

Rent 租 \$220,000 incl.

Inquiries 查詢 9093 3381 Stephen Chan 陳先生

Webpage No. 網頁編號 4263



Can be sold via company shares transfer
可以公司轉讓股份形式買賣



Repulse Bay Belleview

Garden 淺水灣 麗景花園

5 Belleview Drive

4 bed, 4.5 bath, 3,307 s.f. terrace, 2 car parks

Nicely decorated home with 4 ensuites enjoys
splendid view of Repulse Bay
雅致裝修洋房，四套房間隔，眺望淺水灣壯麗景
色，可租可售

Saleable 實用 3,128 s.f.

Rent 租 \$220,000 incl. (Sale 售 Open Offer)

Inquiries 查詢 9648 6082 Christine Chong 莊小姐

Webpage No. 網頁編號 48969



Peak House

山頂 洋房

5 Mount Austin Road

4 bed, 3 bath,
1,800 s.f. garden, 1 car park

Exclusive 4-bedroom garden townhouse with
tennis court and swimming pool
四房花園洋房，矜罕尊貴，連網球場及游泳池

Saleable 實用 2,724 s.f.

Rent 租 \$228,000 incl.

Inquiries 查詢 9011 5499 Yuky Chung 鍾小姐

Webpage No. 網頁編號 18161



InterOcean Court

山頂 山頂道26號

26 Peak Road

5 bed, 3 bath, 1 car park

Huge 5-bedroom harbour view apartment in
prestigious location
偌大五房海景單位，地段尊貴顯赫

Saleable 實用 2,665 s.f.

Rent 租 \$295,000 incl.

Inquiries 查詢 9026 2912 Michelle Chung 鍾小姐

Webpage No. 網頁編號 21590



Island Road

深水灣 香島道

5 bed, 5 bath, 2 car parks

Deluxe waterfront house with
large terrace in Deep Water Bay
深水灣豪華海濱洋房，連偌大露台

Saleable 實用 3,449 s.f.

Rent 租 \$400,000 incl.

Inquiries 查詢 9026 2912 Michelle Chung 鍾小姐

Webpage No. 網頁編號 13666



Valley View

東半山 欣景台

4A-4D Wong Nai Chung Gap Road

4 bed, 2 bath, 1 car park

Spacious 4-bedroom mid-rise apartment with
large balcony in prime location
寬敞四房中密度單位，連偌大露台，地段優越

Saleable 實用 1,912 s.f.

Sale 售 \$56,000,000

Inquiries 查詢 9648 6082 Christine Chong 莊小姐

Webpage No. 網頁編號 98823



Altadena

山頂 白加道27號

27 Barker Road

4 bed, 4.5 bath, 2 car parks

Prestigious 4-bedroom duplex with balcony enjoying fantastic

Victoria Harbour view

尊貴四套房複式單位，連露台，享醉人維港美景

Saleable 實用 4,073 s.f.

Rent 租 \$330,000 incl.

Inquiries 查詢 9662 2199 David Lau 劉先生

Webpage No. 網頁編號 12838



Gough Hill Road

山頂 歌賦山道

5 bed, 4.5 bath, 1,530 s.f. garden, 2 car parks

Immaculate 4-ensuite townhouse with private garden and

swimming pool

四套房尊貴洋房，氣派備人，享私家花園及游泳池

Saleable 實用 4,652 s.f.

Rent 租 \$420,000 incl.

Inquiries 查詢 9662 2199 David Lau 劉先生

Webpage No. 網頁編號 110365



Deep Water Bay Road

深水灣 深水灣道

4 bed, 3.5 bath, 2 car parks

Newly renovated garden house in prestigious address

全新裝修花園，地段顯赫尊貴

Saleable 實用 2,838 s.f.

Rent 租 Open Offer

Inquiries 查詢 9871 6828 Louis Wong 黃先生

Webpage No. 網頁編號 14722



84 Peak Road

山頂 山頂道84號

6 bed, 5,359 s.f. garden, 1 garage (4 car parks)

One of a kind Peak house with private swimming pool and

huge garden

別樹一幟山頂洋房，連私家游泳池及偌大花園

Saleable 實用 5,342 s.f.

Rent 租 Open Offer

Inquiries 查詢 9011 5499 Yuky Chung 鍾小姐

Grenville House

中半山 嘉慧園

1 & 3 Magazine Gap Road

4 bed, 3 bath, 1 car park

Newly renovated 4-bedroom apartment with 2 ensuites and huge balcony

全新裝修四房單位，連兩套房及偌大露台

Saleable 實用 3,349 s.f.

Rent 租 \$180,000 incl.

Inquiries 查詢 9662 2199 David Lau 劉先生

Webpage No. 網頁編號 35553



The Summit

東半山 御峰

41C Stubbs Road

4 bed, 2 bath, 1 car park

Well decorated 4-bedroom duplex unit on high floor zone enjoys panoramic views

優質裝修高層複式單位，四房間隔，享開揚景色

Saleable 實用 2,375 s.f.

Rent 租 \$185,000 incl.

Inquiries 查詢 9648 6082 Christine Chong 莊小姐

Webpage No. 網頁編號 29082



3 Macdonnell Road

中半山 麥當勞道3號

4 bed, 4.5 bath, 1 car park

Modern 4-ensuite apartment with balcony and city view at Midlevels Central

時尚四套房住宅，連露台，眺望城市景

Saleable 實用 2,941 s.f.

Rent 租 \$195,000 excl.

Inquiries 查詢 9648 6082 Christine Chong 莊小姐

Webpage No. 網頁編號 186186



Harmony

東半山 逸園

44 Stubbs Road

4 bed, 4 bath, 949 s.f. terrace

Sumptuous 4-ensuite apartment with private terrace enjoys fantastic view of the city skyline

奢華四套房單位，享私家平台，飽覽迷人城市景致

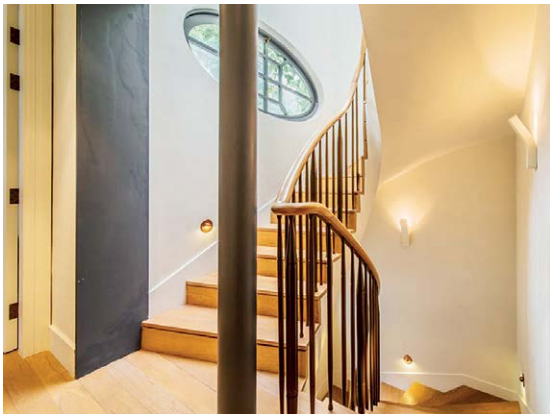
Saleable 實用 2,019 s.f.

Rent 租 \$224,000 excl.

Inquiries 查詢 9871 6828 Louis Wong 黃先生

Webpage No. 網頁編號 182004





The highest level of luxury 奢華之巔

Situated in one of the most prestigious neighbourhoods where old families and influential businessmen dwell, this massive detached house on a single lot in Jardine's Lookout is probably one of the most luxurious residences in Asia. This four-storey detached house offers 4,969 s.f. of living spaces and an additional 3,000 s.f. of outdoor area (garden, roof and terraces with two covered garage).

The family and formal living rooms are on the ground floor while the bedrooms occupy the upper levels – a private staircase directly links the master suite to the rooftop terrace fitted with a spa pool. The vast basement houses the kitchen, utility area, two maid's rooms plus a huge dining room. In addition, the stone-clad garden features a 10m heated swimming pool and outdoor speakers... perfect for entertaining guests!

渣甸山這間獨立地段的獨立屋坐落城中其中一個最顯赫的高尚住宅區，與名門望族及有影響力的實業家為鄰，可說是亞洲區內數一數二的奢華大宅。四層高獨立屋的室內面積4,969平方呎，更有額外3,000平方呎的戶外空間（包括花園、天台、平台及兩個有蓋車位）。

家庭偏廳及主客廳設於地面層，上面數層則是臥室，主人套房更有私人樓梯直達設有按摩池的屋頂平台。地庫空間偌大，設廚房、工作間、兩間家傭房及大飯廳。而且，鋪上石地板的花園有10米恆溫泳池及戶外音響，是宴客的不二之選。

Jardine's Lookout 渣甸山

Saleable 實用 4,969 s.f.

Sale 售 Open Offer

Inquiries 查詢 9871 6828 Louis Wong 黃先生



Elegant 19th Century Chateau 19世紀優雅城堡別墅

A remarkable Palladian architecture Bordeaux Chateau in Italianate style dating back to the end of the 19th Century in outstanding condition set in parkland of just over 4 hectares which are surrounded by vineyards on 3 sides. Large swimming pool and pool house complete the Bordeaux lifestyle experience. The chateau blends both "grandeur" and modern comforts within spaces that are impressive but understated. The grand reception rooms feature a gracious staircase and walls ready to showcase fine art and tapestry.

Located on the edge of Bordeaux and in very easy reach of its centre. Convenient for all amenities and in particular Bordeaux airport (15 min. drive).

這座超凡的帕拉第奧式波爾多城堡，具有濃厚的意大利風格，其歷史可追溯至19世紀末，城堡占地4公頃，被葡萄園三面環抱，條件出眾。偌大游泳池及泳池屋彰顯波爾多的生活體驗。其中城堡融合了富麗堂皇和當代舒適的設計，盡顯低調奢華。恢宏的接待室設有高雅的樓梯，牆壁可展示精美的藝術品和掛毯。

城堡坐落波爾多近郊，舉步可達市中心。毗鄰日常生活所需及波爾多機場（15分鐘車程）。

Bordeaux, France 法國 波爾多

Sale 售 €3,500,000 (3,500,000歐元)

Inquiries 查詢 6323 7577 Kennis Lee 李小姐

2152 4888 KS Koh 許先生

Reference No. 編號 1592163



WATERFRONT LIVING AT ITS FINEST



FOUR SEASONS PRIVATE RESIDENCES BANGKOK AT CHAO PHRAYA RIVER

A COUNTRY GROUP DEVELOPMENT

In the heart of Bangkok, overlooking the majestic Chao Phraya River, rises the first waterfront Four Seasons Private Residences in Asia.

An iconic 73-storey residential tower standing over more than 14 acres of prime land, Four Seasons Private Residences Bangkok at Chao Phraya River is designed to become the most exclusive residential address; where luxury and legendary Four Seasons service combine to create a lifestyle unlike any other.

- Asia's first waterfront Four Seasons Private Residences and the largest Four Seasons Private Residences in the world
- One-of-a-kind geometric design, featuring all-corner units across all 355 ultra-luxury residences
- Situated on the last remaining waterfront golden site in Bangkok's CBD

FOR MORE INFORMATION :

Tel: 9010 7621 | projects@landscape-christies.com



DISCLAIMER: Landscape Christie's International Real Estate (C-18783) is licensed and regulated by EAA. Our sales representatives for overseas property work exclusively in relation to properties outside Hong Kong and unless expressly stated otherwise, are not licensed under the EAA to deal with Hong Kong properties. Purchasing uncompleted properties situated outside Hong Kong is complicated and contains risk. You should review all relevant information and documents carefully before making a purchase decision. If in doubt, please seek independent professional advice before making a purchase decision.

Chao Phraya Estate Project (the "Project") is a project of Landmark Holdings Company Limited (the "Company") which has its registered office at Level 20, Ploenchit Tower, 808 Ploenchit Rd., Bangkok 10330 Thailand with its registered capital of Thai Baht 147 million (fully paid up). Mr. Den Tachauab is an authorized director of the Company. The location of the Project is on the land title deed No. 2584, with total area of 30 Rai 2 Ngan 68 Square Wa subleased from Country Group Development Public Company Limited where it leases from the Crown Property Bureau for an initial term of 25 years, with 2 renewal options which are subject to terms and conditions thereunder. The land and private residence are not encumbered with financial interests. The Project consists of two hotels, and one private residence (73 storey, having approximately 355 units), totalling three towers sharing certain infrastructure associated with the below-grade structure of the building. Expenses and taxes will be paid by unit owners. An Environmental Impact Assessment report for the Project has been approved by the Office of Natural Resources and Environmental Policy and Planning as per letter number TorSor 1009.6/10769 dated 9 December 2011. The Project has been awarded a construction permit from the Bangkok Metropolitan Administration as per letter number Gor for 0907/Gor 844 dated 19 September 2014. Project construction has begun and is currently expected to be completed by the end of 2018, although this remains subject to change. Remarks: i) Information in the disclaimer is subject to further changes and/or amendments, and ii) The illustrations in the AD are simulated and to be used for advertisement purpose only.

Four Seasons Private Residences Bangkok at Chao Phraya River are not owned, developed or sold by Four Seasons Hotels Limited or its affiliates (Four Seasons). The developer uses the Four Seasons trademarks and tradenames under a license from Four Seasons Hotels and Resorts Asia Pacific Pte Ltd. The marks "FOUR SEASONS", "FOUR SEASONS HOTELS AND RESORTS", any combination thereof and the Tree Design are registered trademarks of Four Seasons Hotels Limited in Canada and U.S.A. and of Four Seasons Hotels (Barbados) Ltd. elsewhere.



Developer



Marketing Agent

Highly reversionary mixed use building in prime Soho area

- Subject building is situated in Soho most iconic street, occupying visible corner location
- World famous retail locations of Carnaby street, Oxford street, and Regent Street are all within short walking distance
- Total passing rent at £606,297, excellent opportunity for future rental growth
- 位處Soho最著名街道的優越轉角位大廈
- 信步可達世界知名Carnaby street、Oxford street及Regent Street的優越零售地段
- 年租金收入606,297英鎊，未來租金回報增長優厚



Freehold Title
NIY 3%
Guide Price £19M
5326 3344
Timothy Chan 陳先生

Freehold En Bloc Investment opportunity

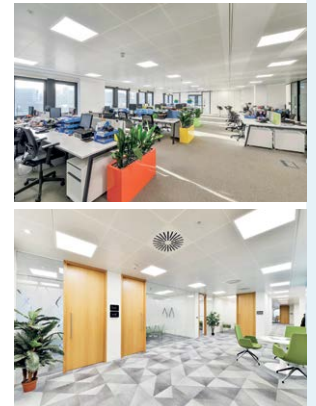
- Prominent location in Covent Garden
- Five offices and retail accommodation arranged over LG, G and five upper floors
- Potential to vacant the office block for refurbishment /extension (subject to consents)
- Long stable rental income with 6.8 years unexpired
- Rare high yield building in West-End with high upward potential
- 位處Covent Garden的優越地段
- 地下一層、首層及五層上層設辦公室及零售單位
- 辦公室可交吉作翻新或擴建(須經城規批准)
- 尚餘6.8年租約，長期租金回報優厚
- 罕有West-End高回報物業



Freehold Title
NIA of 36,322 s.f.
NIY of 4.52%
Guide Price
£42.25M
5662 8660
Sabella Poon 潘小姐

Fully Refurbished Office Investment in the City of London

- Proximity to Fenchurch Street, Tower Hill and Aldgate Stations, and the future Chinese Embassy
- Fully Refurbished
- Low passing rent of £40 psf with high reversionary potential
- Significant landlord control with all office leases outside 1954 LTA
- 鄰近Fenchurch Street, Tower Hill和Aldgate地鐵站，以及未來中國大使館園區
- 全新翻新
- 現時呎租只有每年40英鎊，具高加租潛力
- 全部寫字樓租約不在1954 LTA的範圍內



Net Initial Yield
6.00%
Guide Price
£30M
£615 psf
6215 1618
Kelvin Wong
黃先生

Rare single letted office located in the heart of London Tech hub

- Securely-let to renowned technological company on a new lease term of 10 years
- Located in the heart of Clerkenwell and Old street – the emerging tech hub of UK
- Only Seven minutes' walk to East Farrington Crossrail Station
- 由著名科技公司承租，擁10年長約
- 位處Clerkenwell及Old street市中心 — 英國新興的科技中心
- 7分鐘路程可抵達East Farrington火車站



NIY of 4.25%
Guide Price £9.75M
5326 3344
Timothy Chan 陳先生

Freehold En Bloc investment opportunity in Earls Court

- The property comprises 12 self-contained apartments in an imposing freehold building
- The accommodation is split over LG, G and four upper floors, with a lift serving all floors
- The property would benefit from refurbishment or a more substantial renovation, subject to consents, to create a high quality residential offering
- 永久業權物業，設12個住宅單位
- 住宅單位位於地下一層、首層及四層上層，設升降機
- 若取得城規批准，可翻新復修，提升住宅質素



Freehold Title
Net saleable area
of 5,325 s.f.
Projected
reversionary yield
of 3%
Guide Price £6.5M
5662 8660
Sabella Poon 潘小姐

High Yield Undervalued En-Bloc Investment with Secure Income

- Strong and very secure tenants, mostly rated 5A 1 by D&B
- Office portion single-let to government
- Regional prime high-street location
- 優質和具保證的租戶組合，大部分被鄧白氏評級為5A 1
- 寫字樓部分由英國政府單一承租
- 區內一線零售街道



Net Initial Yield 7.83%
Guide Price £9.8M
£88 psf
6215 1618
Kelvin Wong 黃先生



INIALA
PHUKET, THAILAND

THAI BEACHFRONT *Luxury*

Iniala Beach House at Natai Beach, Phuket



The Beach House is a true architectural phenomenon comprising three villas (each with three suites) and one spectacular penthouse suite, each given its own unique character with a one-of-a-kind design.

Just a few steps away from Natai Beach and the turquoise waters of the Andaman Sea, this ultra-luxury property features the work of world-renowned designers and includes accommodation and facilities for a full concierge team ready to cater to every whim of the residents.

There exists an opportunity to transform the property in to a beachfront resort with a combined beach frontage of approximately 200 metres.

Available for sale,
for more details please contact us.



Enquiries:

+852 9010 7621

projects@landscape-christies.com



Prime en bloc retail/residential mixed use investment in Chelsea

- Subject en bloc mixed use retail/residential investment is within close proximity to Natural History Museum and Fulham Road close to South Kensington underground station
- Ground and basement let to Michelin starred restaurant with 10 years to expiry, 3 bed self contained residential unit on 1/F to 3/F
- Current passing rent is £255,500 p.a.
- 毗鄰Natural History Museum及Fulham Road的零售商舖及住宅大廈
- 首層及地庫由米芝蓮星級餐廳承租，更擁10年的租約，一樓至三樓則是三房住宅單位
- 年租金收入255,500英鎊



GIA of 5,281 s.f.
Net Initial Yield
2.99% (overall)
Guide Price £8M
5326 3344

Timothy Chan 陳先生

En Bloc Office building in Prime Southwark

- Newly constructed iconic contemporary office building, designed by Stirling Prize winner
- 5 mins and 6 mins walk to BOROUGH and SOUTHWARK Tube station respectively comprises ground and three upper floors
- Total current rent of £1,173,367.50 p.a., providing an excellent opportunity for future rental growth
- 全新地標式當代時尚辦公大廈，由奪史特靈獎的建築師所設計
- 大廈設首層及三層上層，距離BOROUGH及SOUTHWARK站分別5分鐘及6分鐘
- 年租金總收入1,173,367.50英鎊，租金回報優厚



Freehold Title
NIA of 19,437 s.f.
NIY of 4.75%
Guide Price £23.1M
5662 8660
Sabella Poon 潘小姐

High Yield Freehold London Investment with Long Unexpired Lease

- Excellent location, proximity to London Tower Bridge
- Long Unexpired Lease with WAULT at 13 years
- Majority let to the strong FTSE 250 listed covenant of ZPG
- 鄰近倫敦塔橋，位置優越
- 帶穩固長租約，平均還有13年到期
- 主要租客為ZPG，一家富時250上市公司



Freehold Title
Net Initial Yield 5.00%
Guide Price £89M
£1,036 psf
6215 1618
Kelvin Wong 黃先生

Unique listed building in prime location

- Rare opportunity to acquire a trophy asset in the heart of Mayfair
- Within easy walking distance to Bond Street and Oxford Circus
- Opportunity to extend office to 5th floor
- 位處Mayfair市中心的矜罕物業
- 舉步可達Bond Street及Oxford Circus
- 辦公室可擴建至五樓



Reversionary yield of
3.81%
Guide Price £17M
5326 3344
Timothy Chan 陳先生

En Bloc mix use investment in the Royal Borough of Kensington and Chelsea

- Adjacent to HSBC Bank and opposite High Street Kensington Underground Station
- Retail element basement and ground floor is single let with 20 year lease from Jan 2018
- Upper floors with four residential flats were fully let
- Total Passing rent is £380,186 p.a.
- 物業毗鄰匯豐銀行及面對High Street Kensington站
- 地庫及首層是零售商舖，由2018年1月起擁20年長約
- 上層是四個住宅單位，現已租出
- 年租金收入380,186英鎊



Freehold Title
NIA of 6,560 s.f.
NIY of 3.75%
Guide Price £12.5M
5662 8660
Sabella Poon 潘小姐

Prime Kensington High Street Office and Retail Investment Opportunity

- Extremely high footfall with moments from High Street Kensington Underground
- Retail passing rent at c£140 psf ITZA, reversionary to in the region of c£200 psf ITZA
- 瞬步抵達肯辛頓高街地鐵站，車水馬龍
- 零售部分的現有呎租只有每年約140英鎊ITZA，與區內市場水平的200英鎊ITZA有明顯距離，具明顯加租潛力



Freehold Title
Net Initial Yield 4.00%
Guide Price £30M, £1,200 psf
6215 1618
Kelvin Wong 黃先生



GALLERIA COSTA

KANAGAWA, JAPAN 日本 神奈川

Less than 90 minutes from Tokyo, Galleria Costa, an 8.5 acres spacious ocean view residence with guest house, faces the coast of Manazuru peninsula. Harmonizing with the ocean that lies ahead, this estate takes full advantage of the landscape and the blessing of the sea. Each room is uniquely designed with its own theme, and are created so that all rooms have the ocean view. A resort style architecture is used for the outdoor pool and outdoor baths "rotenburo," which creates an infinity view that leads to the ocean. The spacious deck is equipped with the utmost luxury facilities, and is capable of accommodating a group of guests. The estate is filled with facilities to entertain owner and guests. The magnificent view of the Sagami Bay from the open ceiling living and dining room is irreplaceably breathtaking. As a resort house close to the city center, it is truly a dream mansion fulfilling all desires.

1 Master bedroom, 3 Guest room, Living room, Dining room, Kitchen, wine cellar, 2 study, outdoor pool, 2 outdoor baths, mist sauna, stone sauna, treatment room, fitness room, jacuzzi, game room, tennis court, golf simulator, home theatre with karaoke system, library, massage room, laundry room, garage, maid's quarter, etc.

Galleria Costa 占地 8.5 英畝，遠眺遼闊海景，面向真鶴半島的海岸，距離東京僅 90 分鐘路程。大宅與海洋和諧地連成一體，盡享自然地理優勢。所有房間均擁有別出心裁的主題設計，飽覽優美海景。室外游泳池和「露天溫泉」採用度假式建築風格，營造出恍如通往遼闊深遠大海的攝人海景。偌大寬敞的平台設有豪華的設施，可容納賓客把酒言歡。從景觀開揚的客廳能飽覽相模灣的如畫美景。Galleria Costa 毗鄰市中心，絕對是你夢寐以求的理想居停。

1 間主人睡房、3 間客房、客廳、廚房、酒窖、2 間書房、室外游泳池、2 個露天浴池、桑拿浴室、理療室、健身室、按摩浴缸、遊戲室、網球場、高爾夫球模擬場、設有卡拉OK系統的家庭影院、圖書館、按摩室、洗衣房、車庫、家傭房等。



Inquiries 查詢：

Simon Ng 吳先生 TEL: 6011 1706
simon.ng@landscape-christies.com

Michael Yeung 楊先生 TEL: 9126 5848
michael.yeung@landscape-christies.com

PRICE UPON REQUEST

售價待詢

Presented by

JCR CHRISTIE'S
INTERNATIONAL REAL ESTATE



Super Prime high rise condo in Akasaka close to Roppongi Station

Akasaka, Minato-Ku, Tokyo 東京 港區 赤坂

Subject property is a 44 storey high rise condominium bldg. comprising a total of 322 self contained luxury residential units within close proximity to Roppongi Station. Building is designed by Kengo Kuma and Associates and equipped with gym, guest suite, lounges, and sky deck. Completion date was February 2018. 7 min walking distance to Roppongi station Tokyo Metro Nanboku Line, 3 min walking distance to Nogizaka Station of Tokyo Chiyoda Line. Approx. 190m to Tokyo Midtown, which houses The Ritz Carlton Tokyo, offices, shops and restaurants, etc.

樓高44層的住宅大廈，共322個豪華住宅單位，鄰近六本木站。由隈研吾建築都市設計事務所設計，大廈建於2018年2月，提供健身室、套房，休息室和空中平台等設施。距離東京地下鐵南北線六本木站7分鐘步程，東京地下鐵千代田線乃木坂站3分鐘步程。距離位於東京中城的麗思卡爾頓酒店約190m，辦公室、商鋪及餐廳林立。

Property 1 is a 1-bedroom condo on the 11/F and currently vacant

物業一是位處11樓的一房單位，現正交吉

Freehold title

GIA of 35.70 sq.m.

Guide price 售 JPY 109.90M (approx. HK\$7.78M)

Property 2 is a 2-bedroom unit on the 20/F

物業二是位處20樓的兩房單位

Freehold title

GIA of approx. 72.53 sq.m.

Guide Price 售 JPY 298M (approx. HK\$19.9M)



Prime office/residential mixed use bldg in Tokyo

Kita-Ku, Tokyo 東京 北區

- Subject Property is an office/residential bldg housed in a 4 storey reinforced concrete structure with 1 basement level
- Completion time was January, 1993
- Projected reversionary gross rental will be JPY14,936,640 p.a.
- 8 min walking distance to Komagome Station of JR Yamanote Line and 8 min walking distance to Tabata station of JR Yamanote Line, JR Keihin-Tohoku Line
- 樓高四層的辦公室及住宅鋼筋混凝土大廈，連一層地庫
- 建於1993年1月
- 年租金收入 14,936,640 日元
- 距離JR山手線駒込站僅8分鐘步程，JR山手線及京濱東北線的田端站僅8分鐘步程

Freehold title

GIA of approx. 488.24 sq.m.

Projected reversionary gross yield upon full

occupancy will be 5.33%

Guide price 售 JPY 280M (approx. HK\$20M)

En bloc residential bldg in Tokyo

Kita-Ku, Tokyo 東京 北區

- Subject property is an 8 storey reinforced concrete structure which sits on a site area of 131.79 sq.m.
- Completed in July 2007
- Projected reversionary gross rental upon full occupancy is JPY15,986,400 p.a.
- 10 min walking distance to Shin-Itabashi Station of Toei Mita Line
- 樓高八層的鋼筋混凝土建築，地盤占地131.79平方米
- 建於2007年7月
- 如果滿租，年租金收入15,986,400日元
- 距離都營地下鐵三田線新板橋站僅10分鐘步程

Freehold title

GIA of approx. 422.08 sq.m.

Projected reversionary gross yield of 5.55%

Guide price 售 JPY 288M (approx. HK\$19.2M)





首推 - 特委代理

中環核心區矜罕 全層商鋪出售

繁華聚焦 彌足珍貴

中環罕有全新商鋪
些利街2-4號

✓ 昂然進駐 中環核心 人流如鯽

坐落中環至半山自動扶手電梯旁，
5分鐘步行直達中環港鐵站，商鋪門庭若市

✓ 潛力無限

多個大型綜合發展項目，信步核心地標中環中心

商鋪全層 1,832-2,678 平方呎 (G)*
平均每呎只售 39,000 餘元起

落成年份：預計2018年第四季

*未核實



座落中環主要幹道

得天獨厚三鐵交匯，佔據大都會核心優勢

商業地屢創新高

- 聚焦極罕中環CBD
 - 矜罕商鋪傲視同儕
 - 中區供應持續短缺
 - 百載地標遊客不斷
 - 全層空間間格寬敞
- 超凡地段自用投資均極適合
同區最優質多用途核心商鋪
天價商業地王見證世紀時代
高消費群集中盡佔都會脉搏
高級餐廳旗艦名店爭相進駐



Inquiries:

Mr. Lai

+852 9484 5501

DAWN

AERO COWLING

the tonneau cover

Style and innovation blend in this truly exhilarating evolution of Dawn.

Uncompromising design and lightweight construction give Dawn a transformative nature; seamlessly switching between immersive four-seater socialite and expressive two-seater athlete.

Unrivalled beauty on the open road.



Rolls-Royce Motor Cars Hong Kong
Shop 4, G/F, Wu Chung House, 213 Queen's Road East, Wanchai, Hong Kong
Tel: +852 2870 1692 www.rolls-roycemotorcars-hongkong.com.hk

© Copyright Rolls-Royce Motor Cars Limited 2018. The Rolls-Royce name and logo are registered trademarks.