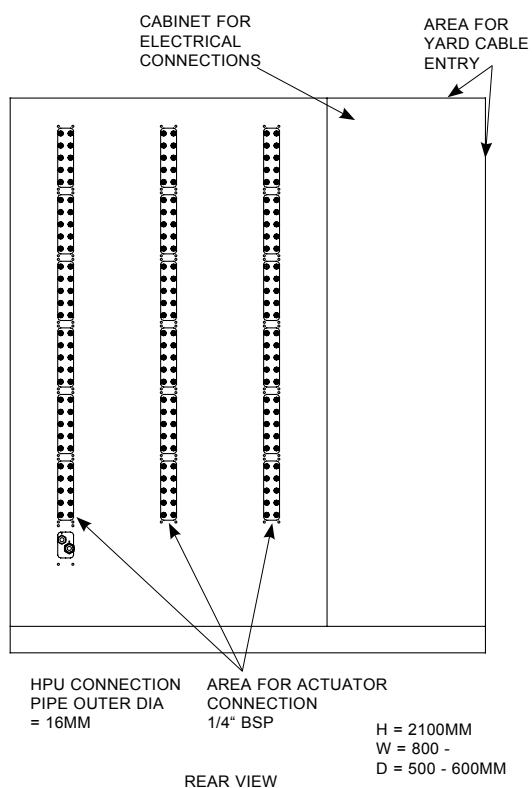
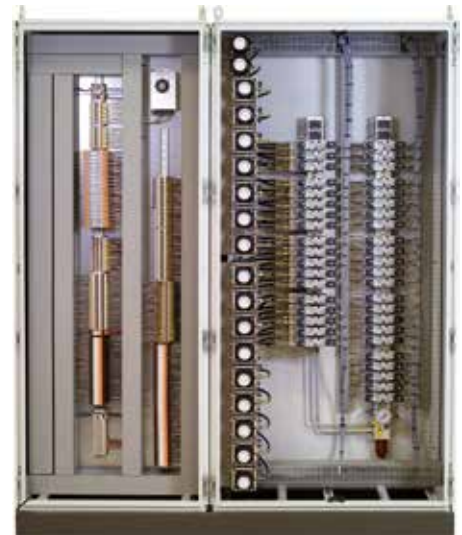


Solenoid Valve Cabinet

Cabinet with door in front.
Separated electro-hydraulic and electric sections.

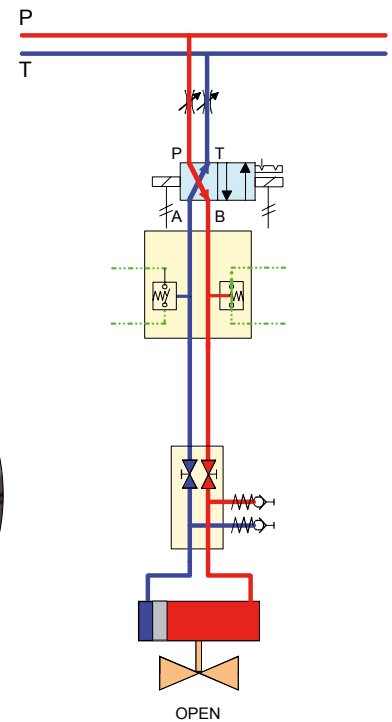
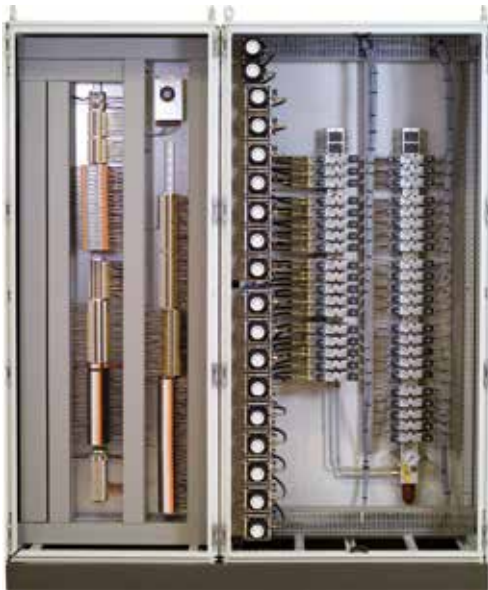
- Wandfluh NG4 solenoid valve
- 24VDC coils
- Solenoid valves mounted on manifold blocks in the rear of the cabinet
- Cable entrance through top or side of cabinet
- Hydraulic connections to actuators through back of cabinet



Indirect Open/Close indication Flow switch indicator installed in Solenoid valve cabinet

Open/Close indication based on monitoring the flow in the lines to the actuator.
Positive feedback on actuator movement by indication of flow in return line.
No additional cabling to actuator needed.

See datasheet Control Circuit D22 and S22 for details.



Indirect continuous indication Volumetric indicator installed in Solenoid valve cabinet

Continuous indication by measuring the oil volume distributed to/from the actuator
by using a volumetric indicator.
Pressure and temperature independent.
No additional cabling needed.

See datasheet Control Circuit D36
for details.

