



Inner Park Road, London SW19

**HAMPTONS**  
INTERNATIONAL

*Beyond your expectations*





# Inner Park Road

## Description

Arranged over four floors, these prestigious new homes provide spacious accommodation with exceptional design creating a practical living environment with added technology for modern living. Each home offers fantastic family living space comprising a large kitchen/dining room with bi-fold doors to a lower terrace, large reception room with floor to ceiling glazing that overlooks the garden, family room, master bedroom with en-suite bathroom and dressing area, principle guest room with en-suite bathroom and 2 further bedrooms and a bathroom.

## Location

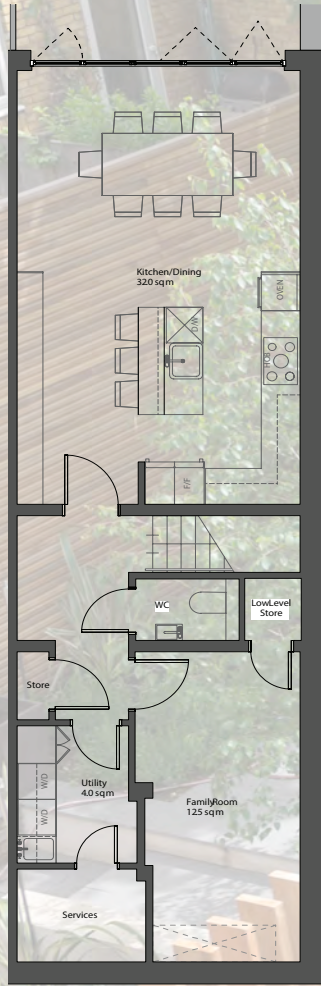
Situated by Wimbledon Common and within easy reach of Wimbledon Village, Southfields and Putney as well as the world famous All England Lawn Tennis Club, home of the Wimbledon Tennis Championships. The Village has a vibrant feel with cafes, boutique shops, a popular delicatessen and two riding stables.

## Transport Links

Walking distance to Southfields tube station and regular trains direct from Wimbledon or Putney to London Waterloo with average journeys taking 17 minutes. The A3 has routes in and out of Central London and to M25 with Heathrow Airport.



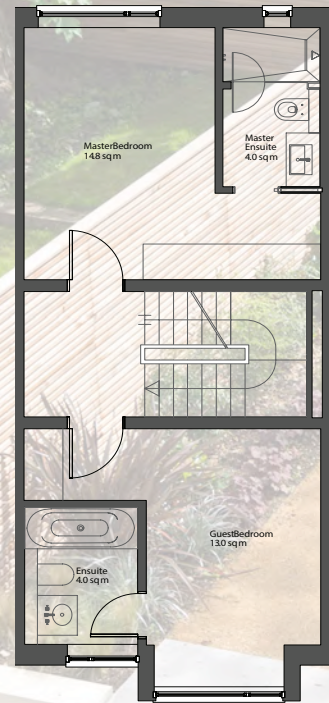




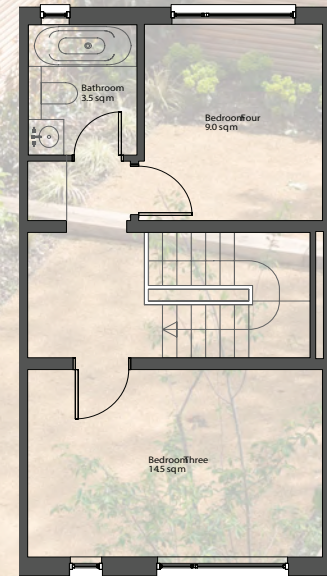
House C - LowerGroundFloorPlan



House C - UpperGroundFloorPlan



House C - FirstFloorPlan



House C - SecondFloorPlan

**House C  
Gross Internal Area Schedule**

Lower GroundFloor	sqft	sqm
	705	650
UpperGroundFloor	sqft	sqm
	640	595
First GroundFloor	sqft	sqm
	527	490
Second GroundFloor	sqft	sqm
	436	405
Total Gross Internal Area	sqft	sqm
	2309	2145

**FOR CLARIFICATION,** We wish to inform prospective purchasers that we have prepared these sales particulars as a general guide. We have not carried out a detailed survey, nor tested the services, appliances and specific fittings. Room sizes are approximate and rounded: they are taken between internal wall surfaces and therefore include cupboards/shelves, etc. Accordingly, they should not be relied upon for carpets and furnishings. Formal notice is also given that all fixtures and fittings, carpeting, curtains/blinds and kitchen equipment, whether fitted or not, are deemed removable by the vendor unless specifically itemized within these particulars.

