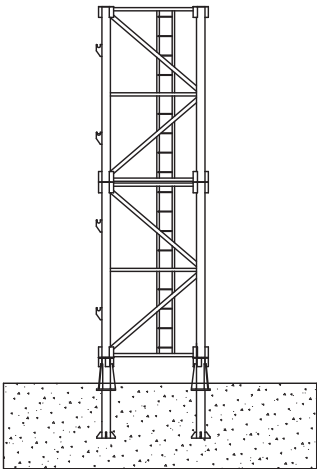


TC 7074 Tower Crane **25 t**

Load Capacity

Jib Length	Radius (m)	Radius (m)																		
		3.5~17.52	20	25	30	35	38	40	43	45	48	50	53	55	58	60	63	65	68	70
70m	Hoisting Load (t)	25.00	21.41	16.42	13.16	10.86	9.78	9.15	8.32	7.83	7.17	6.77	6.24	5.92	5.47	5.20	4.83	4.60	4.29	4.09
		12.50				11.97	10.89	10.26	9.43	8.94	8.28	7.88	7.35	7.03	6.58	6.31	5.94	5.71	5.40	5.20
65m	Radius (m)	3.5~17.95		25	30	35	38	40	43	45	48	50	53	55	58	60	63	65		
	Hoisting Load (t)	25.00	16.92	13.57	11.21	10.10	9.45	8.60	8.10	7.42	7.02	6.47	6.14	5.68	5.41	5.02	4.79			
60m	Radius (m)	3.5~18.56		25	30	35	38	40	43	45	48	50	53	55	58	60				
	Hoisting Load (t)	25.00	17.62	14.15	11.70	10.55	9.88	9.00	8.48	7.78	7.36	6.79	6.45	5.98	5.69					
55m	Radius (m)	3.5~18.85		25	30	35	38	40	43	45	48	50	53	55						
	Hoisting Load (t)	25.00	17.94	14.42	11.93	10.76	10.08	9.18	8.65	7.94	7.52	6.94	6.59							
50,45,40m	Radius (m)	3.5~18.97		25	30	35	38	40	43	45	48	50								
	Hoisting Load (t)	25.00	18.09	14.54	12.04	10.86	10.17	9.27	8.74	8.02	7.59									

Outrigger Stationary

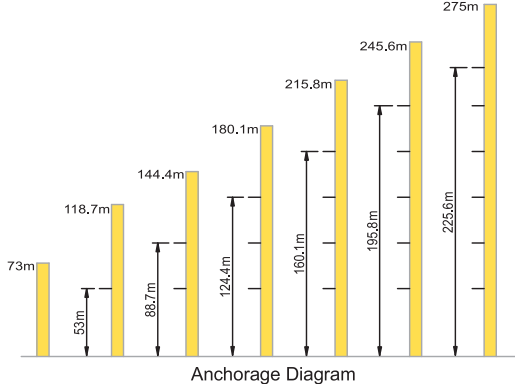
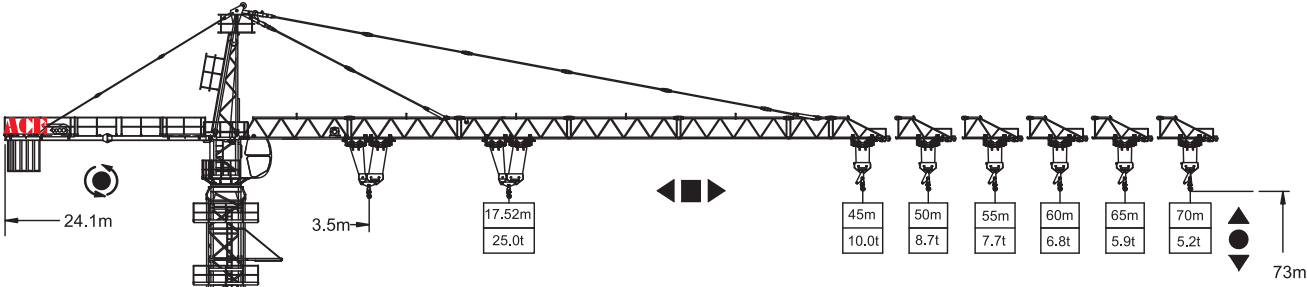


F1 ↓ ↑ F2

F1	◇ 143t	△ 171t	⊕
F2	◇ 240t	△ 256t	141t

Specifications

Hoisting	No of Falls	⊕	⊕
	Speed (m/min)	0 ~ 45 45 ~ 90	0 ~ 22 22 ~ 45
	Hoisting Load (t)	12.5 6.3	25.0 12.5
	Power (kw)	110 110	110 110
Slewing	Speed (rpm)	0 ~ 0.72	
	Power (kw)	3 x 5.5	
Trolley	Speed (m/min)	0 ~ 100	
	Power (kw)	11	
Climbing	Speed (m/min)	0.46	
	Power (kw)	11	
Main Supply	415V / 50Hz		
Electric Power	110 kw (137.5kVA)		



F Reaction ◇ In Service △ Out of Service ⊕ Dead weight without load and counter weights but with longest jib and free standing height.