



FAST RESPONSE AND HIGH PERFORMANCE

The patented electric control system.

DIA-LOG is a very **flexible electronic control system** that enables the customer to take all the advantages of the Stabilis Electra and Waveless stabilizers system. The user has the complete control of the Stabilis Electra system through the **touch screen interface** (and the backup control panel) located in **wheelhouse**.

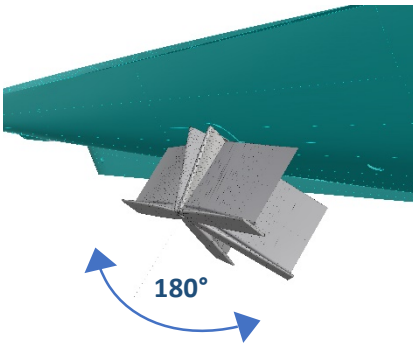
ADAPTIVE



The system monitors the weather conditions and predicts the vessel motion, adjusting the operating parameters automatically to guarantee maximum comfort.

Available when operating in Underway mode only.

FLIP ^{New}



FLIP allows Stabilis Electra to rotate fins by 180° while at anchor.

Reduce “anchor walk” and keep the anchor chain tight and the bow in the wind in any weather condition.

Actual “flip” angle can be adjusted at commissioning time to account for hull shape and prevent interference with chine.

Available when operating in At-Anchor mode only.

ECO

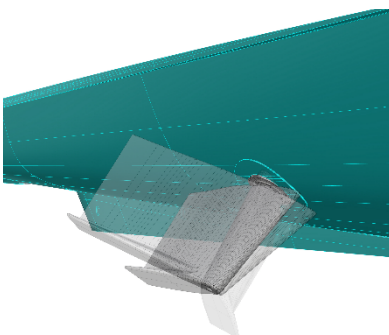


Reduce power absorption to approximately 60% of the standard, by limiting the system responsiveness.

ECO is useful to limit power demand on generators.

Available when operating in At-Anchor mode only and will cause a slight decrease of roll-reduction performance.

DOCK



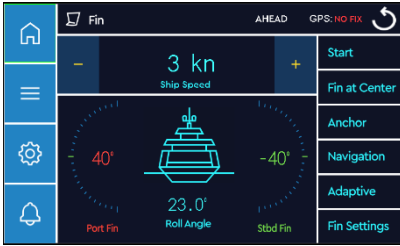
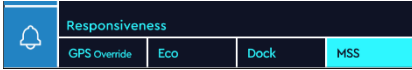
Limits the maximum fin rotation angle.

This is useful to operate your stabilizers when moored alongside dock or next to another yacht.

The maximum rotation angle while in DOCK MODE is defaulted to 25° but can be adjusted during commission at any value between 20° and 30°.

Available when operating in At-Anchor mode only and will cause a slight decrease of roll-reduction performance.

MSS



Operate stabilizers in At-Ancor mode while throttle is engaged at low speed.

Without this option, fins are moved to the "Fins-At-Center" position as the throttle is engaged.

MSS can be useful to maintain stabilization active when trawling at low speed or approaching your berth in a swell.

MSS is necessary for yachts equipped with Dynamic Positioning (DP) systems.

Available when operating in At-Ancor mode only.