



Taylor Product
Bulletin #24-1401

PowerFlex Conveyors

The Powerflex Powered Flexible Conveyor is designed for those times when a fixed conveyor is not applicable and a non-powered solution is not practical. Band-driven, 1.5 inch rollers are powered by a 90 volt DC motor. Height adjustment and an expansion ratio of 3:1 allows the Powerflex to be a truly flexible Conveyor Solution.





Taylor Product
Bulletin #BC-1601

Custom Belt Conveyor System



This featured product spotlights a full system of custom belt conveyors and gravity conveyors for handling rolls of insulation. These conveyors are v-guided w/ center drives and take ups, allowing them to be reversible. In this formation the gravity conveyors will be feeding the belt conveyors using the turning wheels shown mounted on the gravity conveyors.

Both styles shown are constructed with either formed 1/4" steel or 6" structural steel channel to handle the fiberglass rolls. The belt conveyors also feature motor disconnects that are pre-mounted and wired before they leave out shop. The customers application required ease of movement but being able to lock them in place while running, so we used heavy duty casters and locking floor pins to allow quick changes in layout.





Taylor Product
Bulletin #BC-1602

Laundry Receiving Crescent Belt 700SB

Loose laundry loads weighing 400lbs infeed into an 8' long 36" high hopper.



Attached knock-down bars insure laundry gets on the belt while belt guards and deflectors prevent laundry from tangling in the belt.

Raised crescent nodules on the belt provide grip to move laundry up an incline.





Taylor Product
Bulletin #CA-1801

Barrier Protection

Forklift barriers help protect equipment, inventory and personnel. These barriers function as an obstacle between forklifts and equipment and workers providing a safer work environment while reducing equipment down time and maintenance.





Taylor Product
Bulletin #CA-1802-01

Forklift Protection



Forklift Stop Plates

Forklift stops help protect equipment, inventory and personnel. These stops function as an obstacle between forklifts and equipment and workers providing a safer work environment while reducing equipment down time and maintenance.



Forklift Extended Stop Plates

Forklift stops are available in a wide range of lengths and heights.





Taylor Product
Bulletin #CA-1802-02

Conveyor Mounted Forktruck Guides



FORK DEFLECTOR



FORK POCKETS



FORK PROTECTION



FUNNELING GUIDES

Fork Truck Interface - Fork truck loading and unloading interface can be provided to minimize damage to the conveyor, guide the forks to the correct lifting point on the product load or funnel the load to the correct loading point on the conveyor.

Fork pockets, protection, frame cut outs deflectors and loading funnel guides are provided as options. Heavy gauge formed steel and structural channel/angle are typically used.

Fork Deflector

Fork Pockets

Fork Protection

Funneling Guides



FORK POCKETS



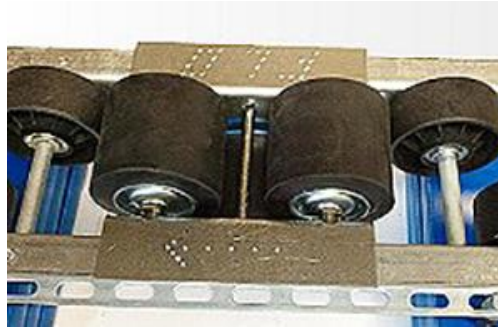
Taylor Product Bulletin
#CA-1803

Speed Controllers

Designed for a Variety of Capacities

Mallard's speed controllers are designed to work with a variety of weights and environments. From the smallest container weighing 25# to pallets weighing 3000#, Mallard speed controllers ensure your products safely travel down the lane.

Speed Controller Indirect Mount



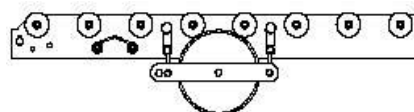
The "indirect" speed controller is designed for lanes using skate wheel or larger polycarbonate wheel tracks. This method allows for a typical load weight variance in the lane of approximately 1,500#.

Speed Controller Under Mount

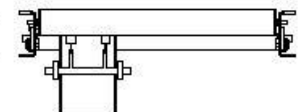


Pallet flow racking speed controllers can also be mounted "indirectly" under full width roller conveyor. Adjustable springs allow for tension to be reduced or increased, in order to better control the rate of flow down lane. Speed controllers are tested to 80,000 cycles.

- Model E15, 25#-200# capacity
- Model E35, 175#-2000# capacity
- Model E40, 500#-3000# capacity
- Freezer Packages to -40 degrees



SIDE VIEW
BRAKE ROLLERS



END VIEW



Taylor Product
Bulletin #CA-1804

Gravity & Powered Roller Swing Gate Conveyor



Swing Gate vs. Manual Lift Gates

- Pneumatic blade style stops to stop product flow while gates are open.
- Safety pin to keep conveyor locked in to the "run" position.
- Casters for a easy opening & closing action.

- Powered swing gate equipped with ultrex roller sleeves and photo eyes for a safe, controlled product flow.

- Perfect solution for ease of movement throughout a plant without the need for conveyor crossovers or manual lift gates.



Manual Lift Gate & Conveyor Crossover Cons

- Manual Lifting Required
- Dependant on locking mechanism to hold gate open.
- Pinch Points
- Stairs required
- Loss of floor space
- Expensive
- Gets in the way of maintenance managers.





Taylor Product
Bulletin #CA-1805-01

Product Side Guides



FIXED ANGLE SIDE
GUIDES



FIXED ANGLE SIDE
GUIDES



ADJUSTABLE ANGLE
SIDE GUIDES



ADJUSTABLE ANGLE
SIDE GUIDES



UHMW LINED FIXED
ANGLE SIDE GUIDES



UHMW LINED FIXED
ANGLE SIDE GUIDES



ADJUSTABLE RAIL
UHMW SIDE GUIDES



SKATEWHEEL SIDE GUIDES



SKATEWHEEL SIDE
GUIDES



BEAD RAIL SIDE
GUIDES



ROLLER SIDE GUIDES



ROLLER SIDE GUIDES



Side Guides - Available in fixed or adjustable with multiple contact surfaces. Allows product to be guided and kept in place within the conveying surface. Side guides are bolted to the conveying frame.

Fixed Angle Side Guides - Standard 1 1/2" x 2" high or 1 1/2" x 6" high formed, 10 ga. angle.

Fixed Channel Side Guides - Standard 2 1/2" high or 3 1/2" high, 10 ga. formed channel.

UHMW Fixed Angle Side Guides - Replaceable UHMW face provides wear protection on rails, width and height adjustable.

Tall Fixed Channel Side Guides - Higher formed angle for tall product.

Tall Fixed Channel Side Guides with Gussets - Higher formed and gusseted angle for tall product.

Tall Fixed Channel Side Guides with Threaded Rod - Higher formed angle with threaded rod adjustment for tall product.

Fixed Angle Side Guides with Spacer Bar - Spacer bar allows side guide to overlap belt to remove gap.

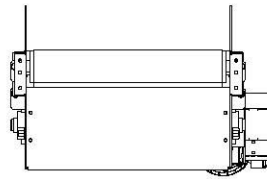
Skatewheel Side Guides - Vertically mounted skatewheels.

Side Guides with Belt Skirts - Belt Skirts attached to formed angle to keep product off the belt edges.

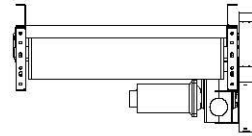
Flared Side Guides - Funnel type side guides for guiding product during loading (v-guided belt only)

Bead Rail Side Guides - Vertically mounted, tightly spaced small wheels supported by axles and a metal channel.

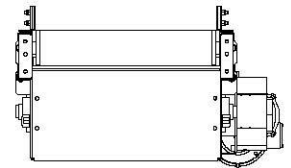
Roller Side Guides - Vertically mounted rollers.



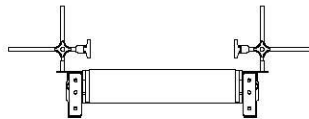
FIXED ANGLE SIDE GUIDES



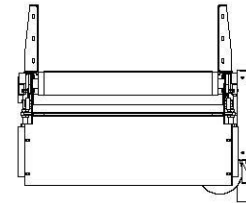
FIXED CHANNEL
SIDE GUIDES



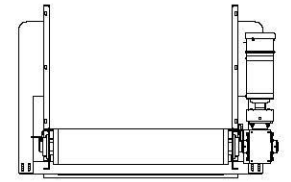
UHMW FIXED ANGLE
SIDE GUIDES



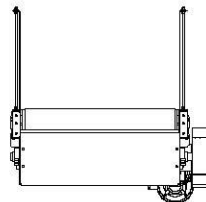
ADJUSTABLE RAIL UHMW
SIDE GUIDES



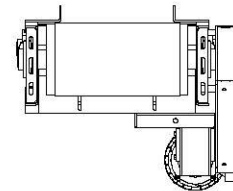
TALL FIXED CHANNEL
SIDE GUIDES



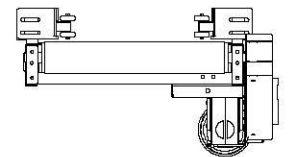
TALL FIXED CHANNEL SIDE
GUIDES WITH GUSSETS



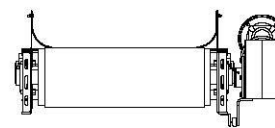
TALL FIXED CHANNEL
SIDE GUIDES WITH
THREADED ROD



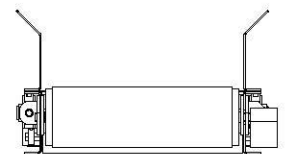
FIXED ANGLE SIDE GUIDES
WITH SPACER BAR



SKATEWHEEL SIDE GUIDES



SIDE GUIDES WITH BELT SKIRTS

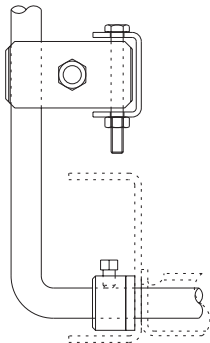


FLARED SIDE GUIDES
SIDE GUIDES

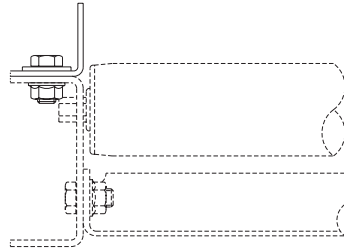
GUARD RAILS GUARD RAILS



MODEL GC

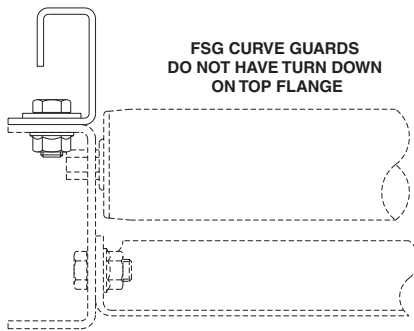


**MODEL GA1.5
MODEL HGA1.5**

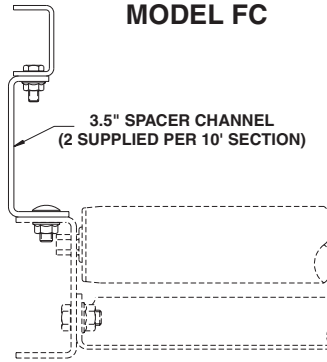


**ALWAYS SPECIFY CONVEYOR MODEL NUMBER AND
FLANGE WIDTH GUARD RAILS WILL MOUNT ON**

MODEL FSG



MODEL FC



SPECIFICATIONS

CONSTRUCTION: All medium duty rails are 12 ga. HRS steel; heavy duty rails are 7 ga. HRS steel; all are powder painted EXCEPT guard rails for light duty conveyors normally supplied with galv. or alum. frames which are galv.; with mounting holes.

GUARD RAILS: Available in several styles; model GC, adjustable channel guards; model FC, fixed channel guards; model GA1.5, angle guards (1.5" high); model HGA1.5, heavy duty angle guards (1.5" high); model FSG, formed steel guards (7 heights from 2" to 24" high). Specify both sides or outside only when ordering AND conveyor model number to ensure receipt of proper guard rails & mounting hardware which is supplied as required.

GUARD RAIL MODEL NO.	WT./FT. (lbs.) BOTH SIDES
GC	3.9
FC	3.5
GA1.5	2.3
FSG-2	4.2
FSG-4	5.7
FSG-6	7.2
HGA1.5	4.0

MODEL GC GUARD RAILS MODEL NO. GC-90-15

GC-(degree or length)-(between frames)

GA1.5 GUARD RAILS MODEL NO. (STRAIGHT)

GA-1.5-1.5-60

(model*)-(guard height)-(bottom flange**)-(length)

*Specify GA or HGA for heavy duty guard rails.

**Specify .75", 1" or 1.5".

GA1.5 GUARD RAILS MODEL NO. (CURVE) GGA1.51.59032.513

(GGA1.5 or PGA1.5*) (bottom flange**) (degree#)

(radius##) (assembly code@)

*Specify GGA1.5 for galv.-to be used only on models supplied w/ galv. or alum. frames; PGA1.5 for painted.

**Specify .75", 1" or 1.5".

#Specify 30°, 45°, 60° or 90°.

##Specify applicable inside radius or outside radius.

@Specify N for inside guard only, U for outside guard only or between frames width for guards on both sides.

FSG GUARD RAILS MODEL NO. (STRAIGHT)

FSG-4-C-36

FSG-(guard height*)-(bottom flange**)-(length)

*Specify 2, 4 or 6.

**Specify .75" or 1.5".

FSG GUARD RAILS MODEL NO. (CURVE) GFSG2-1.59032.5U

(model*) (guard height**) (bottom flange#) (degree##) (radius@) (assembly code@@)

*Specify GFSG for galv.-to be used only on models supplied w/ galv. or alum. frames; or PFSG for painted.

**Specify 2, 4, 6, 8, 12, 18 or 24

#Specify .75", 1" or 1.5".

##Specify 30°, 45°, 60° or 90°.

@Specify applicable inside radius or outside radius.

@@Specify N for inside guard only, U for outside guard only or between frames width for guards on both sides.

MODEL FC GUARD RAILS MODEL NO.

FC-60-39

FC-(degree or length)-(between frames)



Fixed Product End Stops

End Stops - Allows product to stop at the end of a conveyor line. Fixed and adjustable end stops are available.

Adjustable End Stop - Formed or structural steel adjustable end stop bolted to the conveyor frame with manually adjusted stop positions. Height is not adjustable.

Fixed End Stop - Structural channel bolted or welded to the end of the conveyor with optional structural angle reinforcement. Fixed end stops can include fork cut outs for loading and unloading.

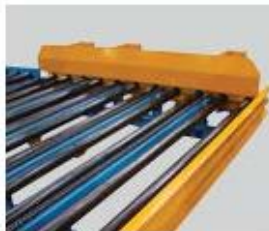
Back Stop - Fixed or Adjustable back stop allows for easy product positioning when loading.



FIXED END STOP



ADJUSTABLE END STOP
END STOPS



BACK STOP



FIXED END STOPS



ADJUSTABLE END STOPS
END STOPS



Taylor Product
Bulletin #CA-1807

Pop-Up Product Stops

Pin & Blade Stops - Pneumatically or manually operated pin or blade that pops up between rollers to accumulate product.

Pop-Up Blade Stop - Used to stop products in the conveying line. Mounted to underside of conveyor, pneumatic cylinder raises blade.



MANUAL POP-UP
BLADE STOP



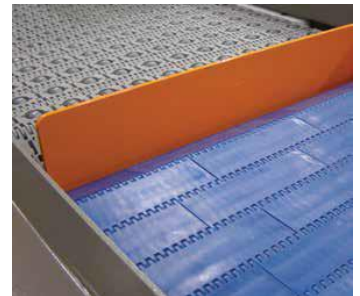
PNEUMATIC POP-UP BLADE STOP

Rotating Blade Stop - Allows product placement within a lower mechanical profile.

Pin Stop - Mounted to underside of conveyor. Pneumatic cylinder raises pins. Typically utilize on round product.

Pin & Blade Stops - Pneumatically or manually operated pin, blade and roller stop that pops up between rollers in order to accumulate product.

Manual Pop-Up Blade Stop - Used to stop products in the conveying line. Mounted to underside of the conveyor. Side handle for manually raising blade. Load capacity is rated for maximum accumulated back pressure of 75#.



Pin Stop - Mounted to underside of conveyor. Pneumatic cylinder raises pins. Typically utilized on round product.



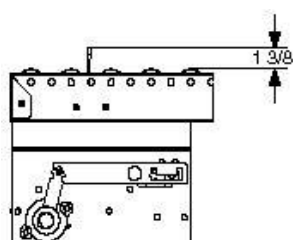
PIN STOP
PIN AND BLADE STOPS



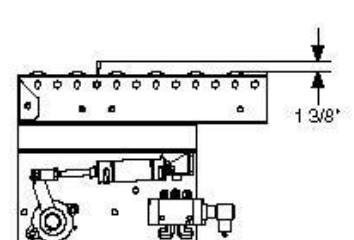
POP-UP BLADE STOP



ROTATING BLADE STOP



MANUAL POP-UP BLADE STOP



PNEUMATIC POP-UP BLADE STOP



Taylor Product
Bulletin #CA-1808

Product Pushers





Taylor Product
Bulletin #CA-1809-01

Conveyor Floor Supports



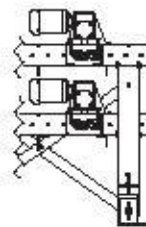
Supports - Available in single or multi-tier and with caster options for portability. Supports are designed to be bolted or welded to the conveyor frame. Supports are shipped loose or mounted.

Multi-Tier Supports

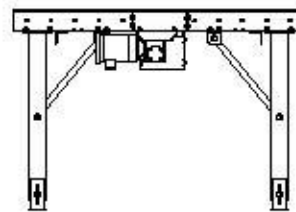
Knee Brace Supports

Welded Structural Steel with Jackbolts

Portable H-Stands



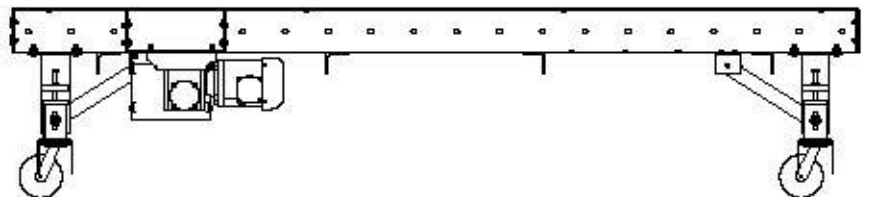
MULTI-TIER SUPPORTS



KNEE BRACE SUPPORTS



WELDED STRUCTURAL STEEL WITH JACKBOLTS



PORTABLE H-STANDS
SUPPORTS



Standard Supports

H-Style leg support (bolt-together construction) - for skate wheel, 1-3/8", 1.9", 2-1/2" or 2-9/16" diameter roller conveyors.

Light Duty (LHST) & Medium
Duty (MHST)



3" x 12 ga. formed channel
galvanized bolt-together leg
supports

Heavy Duty (HHST)



3-1/2" x 7 ga. formed channel
mild steel, powder coated bolt-
together leg supports

H-STYLE LEG ADJUSTMENTS	
Skatewheel, 1 3/8" and 1.9" Roller Conveyor Top of Leg	2 1/2" and 2 9/16" Roller Conveyor Top of Leg
6" - 8"	N/A
8" - 10"	N/A
10" - 12 1/4"	N/A
12 1/4" - 16 1/4"	
14 1/4" - 20 1/4"	
18 1/4" - 24 1/4"	
22 1/4" - 28 1/4"	
26 1/4" - 32 1/4"	
30 1/4" - 42 1/4"	
38 1/4" - 50 1/4"	
46 1/4" - 58 1/4"	
54 1/4" - 66 1/4"	
62 1/4" - 74 1/4"	
70 1/4" - 82 1/4"	

H-Style leg support (welded construction)

Pivot Top



Rigid Top

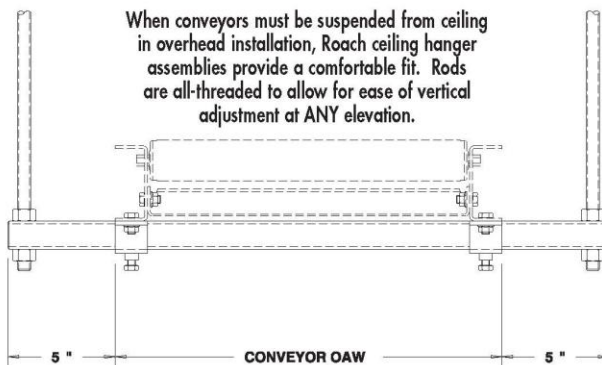


3" or 4" pivot or rigid top and 5" or 6" rigid top only, structural channel supports



Taylor Product
Bulletin #CA-1810

CEILING HANGERS



SPECIFICATIONS

HANGERS: (2) 7' long threaded rods (5/8" dia. - 11 UNC) provide nom. 6' product clearance.

MOUNTING BRACKETS: Cross-pipe to span underneath conveyor is painted 1" I.D. steel pipe; Retainer or "Hat" brackets bolt to lower flange of conveyor frame are 7 ga.

WIDTHS: 24 hour shipments include 13", 15", 17", 19", 21", 23", 25", 27", 31", 33", 37", 39", 43", 45", 47" and 51" BF.

CEILING HANGERS MODEL NO. (LIGHT DUTY) CHL-18

CHL-(overall width*)

*Specify 12", 18" or 24" overall width ONLY.

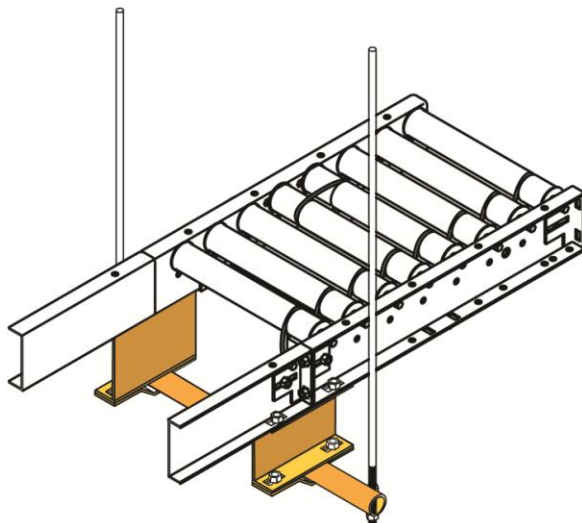
CEILING HANGERS MODEL NO. (MED. DUTY) CHM-21

CHM-(between frames)

NOTE: If attaching to powered conveyor, specify model number for proper allocation of spacer channels, if required. Ceiling hangers for 24 hour shipment are designed for light & medium duty applications (14, 12 and 10 ga. frames). For heavy duty applications (not included in 24 hour shipments), consult factory for pricing & availability.



■ 24 hour shipment



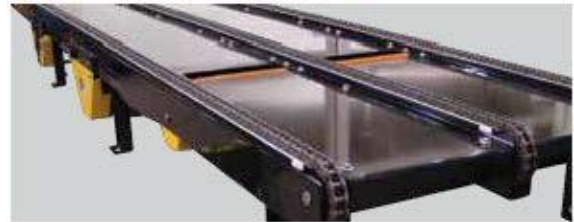


Taylor Product
Bulletin #CA-1811

Conveyor Walkovers

Filler Plate - Formed steel mounted between strands.

Stainless Steel - Conveyors are available in stainless steel materials for wash-down applications or harsh environments.



Tread Plates Mounted Between Rollers





Taylor Product
Bulletin #CA-1812

Conveyor Crossovers

Walkovers allow personnel a safe passage over a conveyor line.





Taylor Product
Bulletin #CA-1813

Transition Roller Stands



Pre-mounted Turntable Transition Rollers



Taylor Material Handling & Conveyor
offers custom solutions to all your
transition and turntable needs.



Transition Roller Stands





Taylor Product
Bulletin #CC-1901

Roller Coatings & Sleeves



Improved Traction

Coatings can prevent product slippage on the conveyor.

Noise Reduction

Coatings can help produce less noise when contacting product and can be combined with ABEC-1 bearings for even less roller noise.

Product Protection

Coatings cushion product surfaces, reducing scratching and marring.

Prolonged Roller Life

Coatings can help protect rollers from abrasions, dents and other wear. Rollers available with urethane and vinyl sleeves. Coatings available in cast urethane, mill able urethane, black rubber, food grade and other materials based on the application. Slip Sleeves for minimum pressure accumulation.



Accumulation Sleeves





Taylor Product
Bulletin #CT-1701

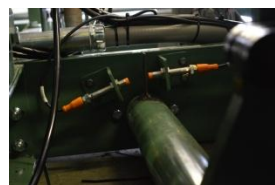
This featured packaging cell is a fully automated conveyor system we recently finished for an auto manufacturer in the southeast part of the United States. The customer had very little floor space to work with and wanted to integrate the ability to load and unload the container by forklift while maintaining a safe work environment for the assembly operators while loading the container.



Using two chain driven live roller conveyors and a pneumatically actuated pop-up chain transfer, this system conveys the container to the operator for loading, while leaving room for two empty containers in que. This system was integrated with an overhead ergonomic lifting device that the assembly operator uses to load the crate in the position shown below.



The electrical controls and programming were completed in our shop and then debugged. A complete system “run-off” was performed, for customer approval, prior to shipping to the end user. The electrical features included separate panels for high and low voltage, HMI Panel View, pneumatic pop up stops and chain transfer, multiple photo eyes and an emergency pull cord e-stop that was mounted around the entire conveyor system. These features allow the system to handle up to four crates at once while the forklift drivers continue to load and unload the conveyor system.





DBS Conveyors - Driven Both Sides

What's the Backbone of our Economy?

The U.S. transportation system is the largest in the world, serving more than 7 million domestic business establishments. The nation's freight transportation system transports nearly 16 billion tons of raw materials and finished goods. On a typical day, about 43 million tons of goods valued at about \$29 billion move on the nation's interconnected transportation network. Some 80 percent of all U.S. commerce is carried on pallets. So widespread is their use that they account for, according to one estimate, more than 46 percent of total U.S. hardwood lumber production.

Companies like Ikea have literally designed products around pallets: One of its mugs, notes Colin White in his book *Strategic Management*, has had three redesigns, each done not for aesthetics but to ensure that more mugs would fit on a pallet (not to mention in a customer's cupboard).

After the changes, it was possible to fit 2,204 mugs on a pallet, rather than the original 864, which created a 60 percent reduction in shipping costs. Pallets are varied in use and type: Pooled vs. one-way, block vs. stringer, wood vs. plastic. Based on the end-products being manufactured, pallet cube optimization is like Tetris for packaging.

So why is this important to your company? Alba Manufacturing, in tandem with its Alba Partner Network (OEMs, SIs, and Distributors), is recognized as one of the industry's pallet handling authorities within the conveyor industry. We offer a unique blend of engineering expertise, technical support, and product knowledge. Our comprehensive offering of pre-engineered pallet handling products are the "building blocks" for an optimal system that is effective, ergonomic, and dependable.

An example of our "out-of-the-box" approach: a technique to provide the tightest possible roller centers is a design utilizing chain boxes on both sides of the conveyor (DBS - Driven Both Sides). A single drive package powers both sides by use of a drive transfer roller. While every roller is driven, the roller-to-roller chain wrap occurs every other roller. Consequently, adjacent rollers are driven by opposing sides of the conveyor.

This allows the closest possible centers by minimizing the space required for the sprockets and chains. Alba's pre-engineered designs include 1.9" rollers on 2.125" centers, 2-1/2" rollers on 2-3/4" centers and 3" centers and 2-9/16" rollers on 2-3/4" and 3" centers.



DBS - Driven Both Sides
Provides the tightest possible roller centers because the design utilizes chain boxes on both sides of the conveyor



DIFFERENT TYPES OF WOOD PALLETS

TWO WAY ENTRY
Reversible



TWO WAY ENTRY
Close Boarded, No Base Board



TWO WAY ENTRY
Wing Type



FOUR WAY ENTRY
Close Boarded, 3 Base



1200x800 EURO PALLET



FOUR WAY ENTRY
Perimeter Base



FOUR WAY ENTRY
Wing Type



FOUR WAY ENTRY
Close Boarded, Perimeter Base



FOUR WAY ENTRY
Open Boarded, 3 Base





Taylor Product
Bulletin #CT-1703

7 Strand Belt Transfer

The 7 strand transfer is moving steel, in the flat, off of a line shaft conveyor to be moved to the next stage of the manufacturing process. These strands have a 2" wide Nitrile rough top belt to avoid scratching the metal while being transferred and have UHMW post which serve as a product stop. These 7 strands are spaced at varying distances to accommodate multiple lengths of metal up to 32 ft. weighing as much as 150 lbs.





Taylor Product
Bulletin #EL-2901

PalletPal Walkie

The PalletPal Walkie from Southworth Products mounts to any standard electric walkie or walkie/rider pallet truck to make order picking faster, safer and easier. Built on the proven design of PalletPal Level Loaders, the PalletPal Walkie uses a calibrated spring mechanism to automatically adjust the height of a pallet load as boxes are added or removed. The top layer of the load is always at a comfortable, convenient working height allowing employees to load or offload items with no bending, stretching or awkward posture.

No tools are required to mount the PalletPal Walkie on a pallet truck. The specially designed reinforced baseframe has generous flared openings at the end of each fork channel to receive the forks of all standard electric walkies for easy pickup and drop off without binding. Once loaded onto the pallet truck the PalletPal walkie is ready for use with no adjustments or modifications. Whether under load or empty PalletPal Walkie will not slip on the pallet truck forks.

In a typical application a worker picks orders until a pallet is full and then drops the entire load, including the PalletPal Walkie, in a staging area where the pallet is loaded to a truck by a fork lift or stacker. The worker then picks up another PalletPal Walkie and repeats the process.

The platform features an anti-slip surface and accepts any type of pallet or skid including GEO and half pallets. Platform recesses and non-skid base treads allow workers to step up close to the load to minimize reaching across the pallet.





Taylor Product
Bulletin #EL-2902

Re-Designed PalletPal Level Loader

Southworth Products Corp has redesigned its popular, time-tested PalletPal Level Loader to make it still more ergonomic. A new, smaller base makes loading and unloading pallets faster, safer, and easier because it lets the user step even closer to the unit's platform, for the best access to palletized loads.

The PalletPal revolutionized manual palletizing in the United States when it was introduced more than 25 years ago. Its use virtually eliminates the productivity-robbing, injury-producing bending, lifting, reaching, and stretching common to pallet-loading applications.

Heavy-duty springs automatically lower or raise a pallet as weight is added or removed, maintaining the top layer of stacked containers at a convenient height. And the turntable ring (or optional turntable platform) at the top of the PalletPal allows the user to spin the load so he or she can stand in the same spot throughout the loading or unloading process.

The economical unit requires no power and is virtually maintenance-free. Fork pockets at the base allow for easy relocation.

The PalletPal can accommodate loads from 400 to 4,500 lbs., depending on which of five spring packages is chosen by the customer (based on the anticipated weight and height of a fully loaded pallet). If needs change, the unit can be adapted easily in the field by changing its spring combination.



Heavy-duty springs bring pallet to most convenient height.

Wide base for free standing stability.

Leveling feet (optional) allow use on sloping or uneven floors.

43 $\frac{1}{2}$ " diameter, low-friction bearing-supported turntable.

Dampener provides smooth, gradual raising and lowering without overshoot or bounce.

Rugged tubular steel frame for loads up to 4,500 lbs.

Fork channels for relocation by fork truck.





Stack-N-Go Powered Stackers

New Stack-n-Go™ fully powered compact stackers from Southworth Products Corp offer many ergonomic features. Built on short but stable wheelbases, they provide maximum maneuverability, even in tight quarters. Ideal for use in light manufacturing, warehousing, assembly, and retail facilities, these versatile, multi-purpose machines are designed for transporting loads on pallets and stacking loads up to 7½ feet high. They can also serve as adjustable workstations for loading and unloading.

Stack-n-Go™ powered stackers have narrow, 62-inch-high masts and offset control handles to give the operator a clear view of what's up ahead, with virtually no blind spots. The ergonomically designed handle puts all controls within easy reach, for maximum comfort and convenience. Forward- and reverse-drive “thumb” switches are located on both sides of the handle to accommodate left- or right-hand operation. An auto-reversing “belly switch” protects the user from potential injury when walking the unit backwards, while an automatic brake immediately halts travel when the handle is released. Power is achieved via two 12-volt batteries, and a 110-volt built-in charger is standard.

Stack-n-Go™ stackers are available in fork-over design for use with open-bottom pallets and in straddle design for use with closed-bottom pallets. Fork-over models have fixed forks that are 21 inches or 27 inches apart (outside dimension). Straddle models have an adjustable fork carriage for easy fork adjustment, from 12½ inches to 27 inches apart (outside dimension).

Straddle legs are adjustable from 40 to 50 inches apart (inside dimension).

One Stack-n-Go™ straddle model features a 2-stage extendable mast that enables the unit to lift loads of up to 2,500 pounds 7½ feet high (90 inches). All other models have a lifting height of more than 3½ feet (43 inches) and a lift capacity of 3,000 pounds.





Taylor Product
Bulletin #EL-2904

Surface Mount Dock Platforms

New Surface Mount Dock Lifts from Southworth provide users all the convenience and versatility of a permanent scissor dock lift without the expense or hassle of digging a pit, making them ideal for leased or temporary buildings. With a lowered height of just 5" and fully raised height of 58" the Surface Mount Dock Lift can access loads on truck beds of any height and transfer them to a fixed height loading dock or to grade level. A built-in 30" ramp creates a gentle 9° slope, providing easy pallet jack accessibility. Diamond tread on the deck, bridge plate, and access ramp also promote excellent traction.



Designated the SMDDL, lifts feature an extra wide base and plate rollers for increased stability throughout the travel range. Models are available in 4000, 5000, and 6000 lb. weight capacities with platform sizes of 6' x 6' or 6' x 8'. Heavy tubular legs and cross members minimize deflection and provide level handling of off-center loads. The unit's hydraulic system uses biodegradable fluid to eliminate potential environmental hazards. An optional portability package for easy relocation of the lift is available. Other features include: Pushbutton control with keyed lockout; fully adjustable downspeed; velocity fuse protection; lubricated for life pins, rollers and bushings. Southworth Surface Mount Dock Lifts come with 2-years parts and labor warranty and a 10-years structural warranty.

All Southworth dock lifts meet or exceed ANSI Standard MH29.1, Safety Requirements for Industrial Scissors Lifts.





LiftMat Low Profile Lift

The low-profile LiftMat™ lift table from Southworth Products descends to just 3¼ inches above the floor and accommodates any skid or pallet, including closed-bottom designs. The ergonomic table minimizes back strain while reducing costs and raising productivity. When the unit is equipped with an optional diamond-plate ramp, workers can feed and offload it with a hand pallet truck or rolling cart, making it ideal for use in tight spaces, work cells, or anywhere that a fork lift is unavailable.

The user can access loads from all four sides with no bending and minimal reach-over, reducing worker fatigue and injuries. As boxes are added or removed, the platform is smoothly raised or lowered to the most comfortable height with a powered foot switch, a hand-held push-button remote, or a wall-mounted switch. A full-perimeter, auto-stop safety toe guard instantly stops descent when it comes in contact with any obstruction.

Because it does not require a pit, the unit can be relocated as needed and can be used in leased buildings or on upper floors where pits cannot be built. Loading and unloading unpalletized boxes with a two-wheel hand truck or dolly is easy, especially with the optional ramp. Other applications include machine feeding, raising malfunctioning equipment to a comfortable level for repair work, assembly work positioning, and transferring loads between levels.

Capacity is 2,200 pounds. Raised height is 31½ inches. Made of sturdy, structural steel, the LiftMat is available with 15 platform sizes, ranging in 6-inch increments of width and/or height from 24 x 60 inches to 48 x 72 inches. All pivot points have lifetime-lubricated bearings. Also available is a portability package — two fixed wheels at one end of the base frame and a skid spotter with steel wheels (adds ½ inch to collapsed height and requires a minimum platform width of 30 inches).





Taylor Product
Bulletin #EL-2906

PalletPal Roll-In Leveler

The PalletPal Roll-In™ Level Loader from Southworth is a manual palletizer that makes loading and unloading full pallets easier than ever. Thanks to its unique low-profile, open-ended platform, the Roll-In allows the forks of an ordinary hand pallet truck to literally roll into it, in between the platform's outer beams and a center support beam, while the pallet ends up on top of the scissor-lift platform. This innovative design, which accommodates loads on any open-bottom pallet or skid, ensures that the load is evenly placed when the hand truck is lowered and rolled away.

The Roll-In Level Loader reduces costs and raises productivity. Because workers can feed and offload it with a hand pallet truck, they don't waste time waiting for a forklift and trained operator to assist them. A powered foot switch allows smooth, hands-free adjustment of the platform to the most comfortable height as boxes are added or removed, reducing worker fatigue and injuries. The platform can be accessed from all four sides with no bending and minimal reach-over. A full-perimeter, auto-stop toe guard provides an added measure of safety.

The Roll-In Level Loader has a 2,200 lb. capacity, lowered height of 3 1/4 inches, 31 1/2 inches raised height, 48 x 53 inch platform.





Taylor Product
Bulletin #FM-3001

Tilt-or-Lift Fork Truck Maintenance Lifts



Lift-a-Lift

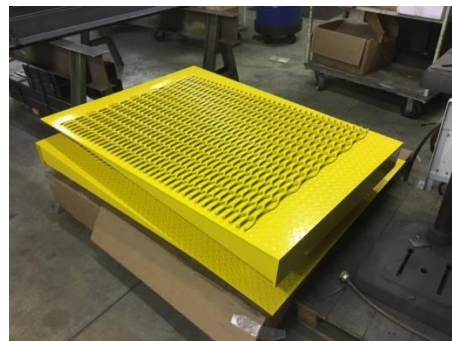
Fast, Safe, and Easy Maintenance for Forklifts, Industrial Vehicles, and Light Trucks.

The Lift-A-Lift® forklift service lift is designed to allow complete access to underside parts of forklifts and other short-wheel based industrial vehicles for lubrication, repair or parts replacement. Just drive the vehicle onto the adjustable runways. The self-leveling service lift raises the vehicle up to 71 inches, so all maintenance can be performed while standing.

The Lift-A-Lift® truck lift is portable with removable runway panels and floor beams for easier access. Standard 18 inch wide runways adjust hydraulically from 56" to 76" on the 20,000#, 30,000# and 40,000# service lift. The width adjustment feature accommodates a wide range of industrial vehicles.

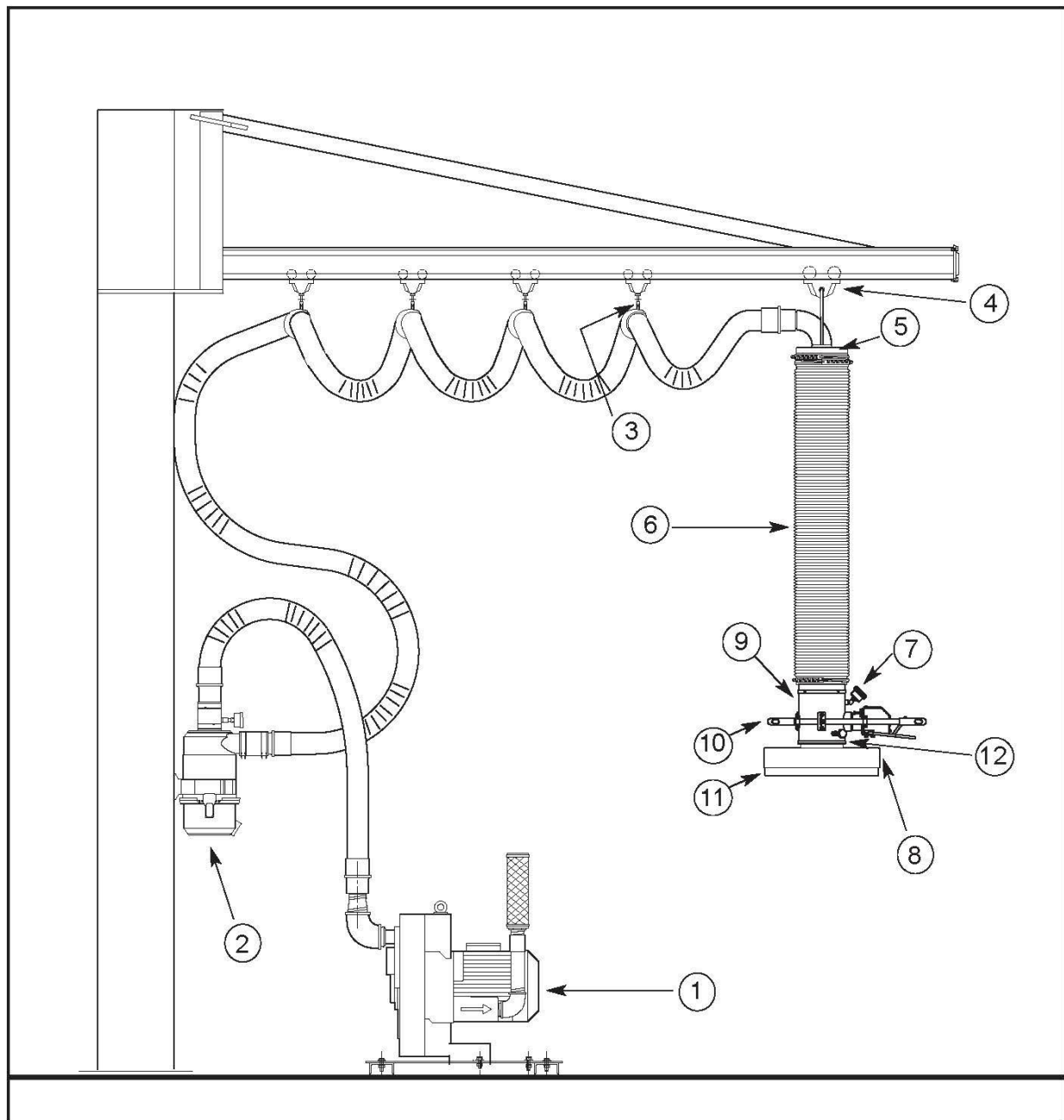
Made in the USA

All four service lift models are made in the USA, operate hydraulically, meet all applicable ANSI and OSHA specifications, and incorporate automatic safety features to prevent injury in the event of hydraulic malfunction. All service lifts are shipped assembled and factory tested. Every service lift also comes with a one-year warranty. A variety of popular options are available to increase versatility.





VT System Parts and Accessories





Taylor Product
Bulletin #OS-3302

Ergonomic Overhead Vacuum Lift Assist Workstation

This featured product shows a Anver vacuum tube lifting device mounted to a Gorbel workstation jib crane allowing workers to work safely and efficiently. We were presented with the task of creating an ergonomic solution and increasing production on several lines in this plant.

This workstation is being fed large/heavy boxes on conveyor lines passing through an automatic bander and are stacked six high, two wide on pallets for shipment. The vacuum tube lifter assembly allows workers of any size or stature to lift and place these boxes with ease quickly and safely. The cartons weigh between 85-100 lbs and range up to 30" wide x 84" long. The oversized arm on the lifting device keeps the operator at a comfortable distance from the box, not having to lean over or across to pick and place. The long span on the workstation crane allow the operator to have multiple pallets in place to stack product on.

This type of material handling solution can be applied in many different ways. In this particular case it increased production, helped avoid injuries to the workers and it takes up little to no floor space.





Telescoping Bridge on Free Standing Work Station Crane w/ Roll Handling

The Industry: Semiconductor and Related Devices

Product: Free Standing Work Station Cranes with Telescoping Bridge

The Problem: A company that manufactures Solar Panels in Mississauga, Ontario wanted to improve the way their workers loaded 1000 lb rolls of vinyl into a process machine. Their production demands had increased to the point that they needed a second processing center.

The floor area was very congested and there was an overhead venting obstruction associated with the new machine installation that could not easily be modified. A standard Bridge Crane layout would not work as a lifting solution because of this obstruction. Consideration was given to using two jib cranes but that idea was disqualified because it would have meant a two-step lifting operation to handle the rolls.



The Solution: The Company chose to install a Free Standing Work Station Crane with a Telescoping Bridge that cantilevers out approximately 1/3 of the bridge length beyond the runway span. The telescoping bridge's travel allows for reaching around the duct obstruction and achieves a single pick and place lifting operation, streamlining the operation and covering considerably more floor space with only one lifting device. The crane's support columns are positioned beyond the lifting area to keep from obstructing the space near the machine. Workers manually push/pull to position the bridge and telescoping bridge. An electric chain hoist provides the vertical lift. ELS was selected because of their past experience coming up with creative overhead lifting solutions using Gorbel Crane Systems. Engineered Lifting Systems & Equipment Inc.'s workers were careful during installation to keep from damaging the expensive specialized process equipment in the crowded work area.



Taylor Product
Bulletin #PH-2401

Low Profile Transfer Cart

This Low Profile Transfer Cart receives product racks at a low elevation of 9" for easier manual loading of the racks. It then travels to the receiving conveyor, elevates to 19" via scissor-lift, and transfers the loaded racks onto conveyor. The conveyor and transfer cart are powered by MDR (Motorized Drive Rollers).

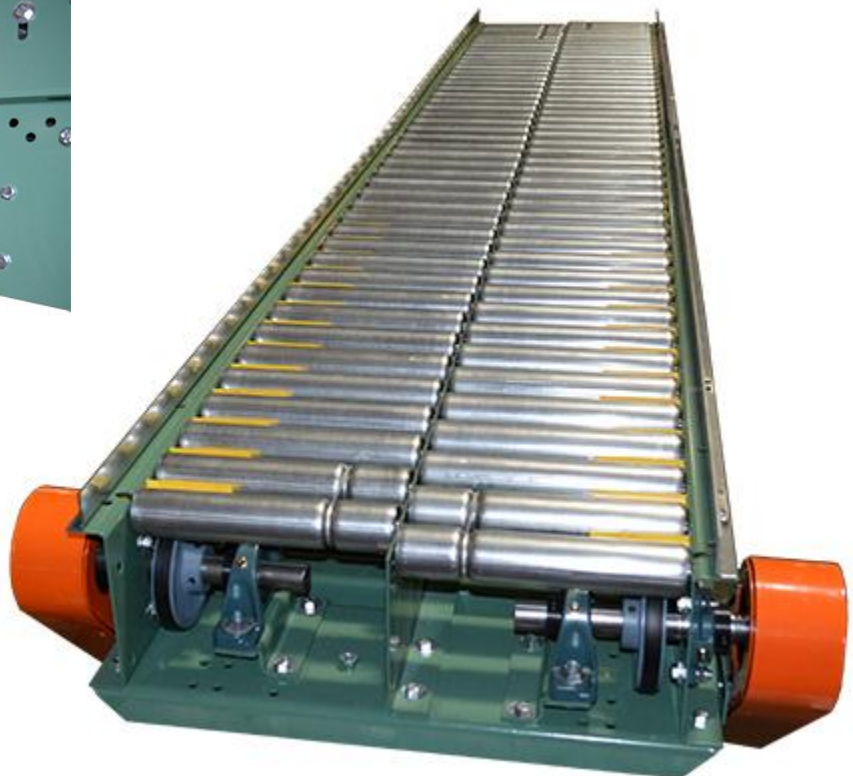




Taylor Product
Bulletin #SC-2701

Box Rotator

This dual lane staggered live roller conveyor was designed to rotate boxes. The 2 lanes have separate drives running the same direction at different speeds. The speed can be adjusted on either lane causing the box to rotate to a desired position.





Taylor Product
Bulletin #TT-2601

Table Top Chain Conveyor w/ Parts Pusher



These two conveyors were part of an automatic parts machining and wash system. Conveyor #1 shown in the two middle pictures below is equipped with parts meters and the adjustable side guide w/ UHMW rails. This conveyor was designed to feed a robot completing the finishing touches on their parts. Once the robot completes its cycle, the parts are placed back down on a table and funneled back onto Conveyor #2 shown above. This conveyor is equipped with a parts pusher and the same adjustable rails.

The parts pusher has a long side guide that allows the cylinder to extend keeping parts from being conveyed behind it creating a jam when it retracts. This conveyor feeds the part washers where the product goes through its final stages. Both conveyors are built out of stainless steel, using all stainless bolts and brackets. These two conveyors are also equipped with floor stops for temporary anchoring and the casters all have brakes. The customer wanted a low profile set of conveyors that can be mobile when needed and can be washed down easily.





Taylor Product
Bulletin #TT-2602

Tabletop Metal Chain Conveyor

Tabletop Chain Conveyors are designed to move bottles, cans, packages, and other products along a processing line with maximum efficiency and minimum pressure. This 750TTC includes a high carbon steel chain which offers excellent corrosion and abrasion resistance and strength and can handle extreme temperatures.



Roach Conveyors has the resources and experience to provide an effective and dependable conveyor solution to handle products in most any situation.





Taylor Product
Bulletin #SV-3801

Available Paint Color Chart

Roach Blue
(RAL5015) Medium

CAUTION: Colors shown will vary based on printer. Also, colors shown on monitor will vary based on monitor settings, lighting conditions, etc.
CONSULT FACTORY for actual color chart.

Jet Black (RAL9005) Signal White (RAL9003) Light Ivory Beige (RAL1015) Beige (RAL1001)

Light Grey (RAL7035) Signal Grey (RAL7004) Slate Grey (RAL7015)

Traffic Yellow (RAL1023) Traffic Orange (RAL2009) Traffic Blue (RAL5017) Dark

CAUTION: Colors shown will vary based on printer. Also, colors shown on monitor will vary based on monitor settings, lighting conditions, etc.
CONSULT FACTORY for actual color chart.

RAL1000	RAL2012	RAL5000	RAL6010	RAL7011	RAL8008
RAL1002	RAL3000	RAL5001	RAL6011	RAL7012	RAL8011
RAL1003	RAL3001	RAL5002	RAL6012	RAL7013	RAL8012
RAL1004	RAL3002	RAL5003	RAL6013	RAL7016	RAL8014
RAL1005	RAL3003	RAL5004	RAL6014	RAL7021	RAL8015
RAL1006	RAL3004	RAL5005	RAL6015	RAL7022	RAL8016
RAL1007	RAL3005	RAL5007	RAL6016	RAL7023	RAL8017
RAL1011	RAL3007	RAL5008	RAL6017	RAL7024	RAL8019
RAL1012	RAL3009	RAL5009	RAL6018	RAL7026	RAL8022

RAL1013	RAL3011	RAL5010	RAL6019	RAL7030	RAL8023
RAL1014	RAL3012	RAL5011	RAL6020	RAL7031	RAL8024
RAL1016	RAL3013	RAL5012	RAL6021	RAL7032	RAL8025
RAL1017	RAL3014	RAL5013	RAL6022	RAL7033	RAL8028
RAL1018	RAL3015	RAL5014	RAL6024	RAL7034	RAL9001
RAL1019	RAL3016	RAL5015	RAL6025	RAL7036	RAL9002
RAL1020	RAL3017	RAL5018	RAL6026	RAL7037	RAL9004
RAL1021	RAL3018	RAL5019	RAL6027	RAL7038	RAL9010
RAL1024	RAL3020	RAL5020	RAL6028	RAL7039	RAL9011
RAL1027	RAL3022	RAL5021	RAL6029	RAL7040	RAL9016
RAL1028	RAL3027	RAL5022	RAL6032	RAL7042	RAL9017
RAL1032	RAL3031	RAL5024	RAL6033	RAL7043	RAL9018
RAL1033	RAL4001	RAL6000	RAL6034	RAL7044	
RAL1034	RAL4002	RAL6001	RAL7000	RAL7045	
RAL2000	RAL4003	RAL6002	RAL7001	RAL7046	
RAL2001	RAL4004	RAL6003	RAL7002	RAL7047	
RAL2002	RAL4005	RAL6004	RAL7003	RAL8000	
RAL2003	RAL4006	RAL6005	RAL7005	RAL8001	
RAL2004	RAL4007	RAL6006	RAL7006	RAL8002	
RAL2008	RAL4008	RAL6007	RAL7008	RAL8003	
RAL2010	RAL4009	RAL6008	RAL7009	RAL8004	
RAL2011	RAL4010	RAL6009	RAL7010	RAL8007	

CAUTION: Colors shown will vary based on printer. Also, colors shown on monitor will vary based on monitor settings, lighting conditions, etc.
CONSULT FACTORY for actual color chart.