



Front Elevation

Plots 3 & 7 (Handed)

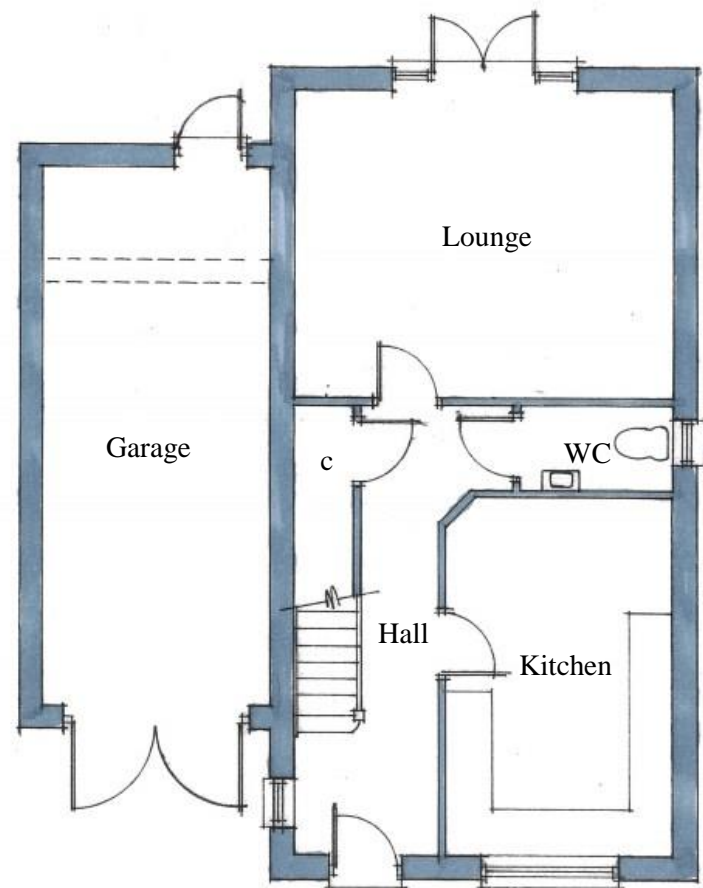
Ground Floor

Kitchen –	2.95m x 4.65m (9’-8” x 15’-3”)
Lounge –	4.95m x 3.95m (16’-3” x 12’-11”)
WC –	1.95m x 1.05m (6’-5” x 3’-5”)

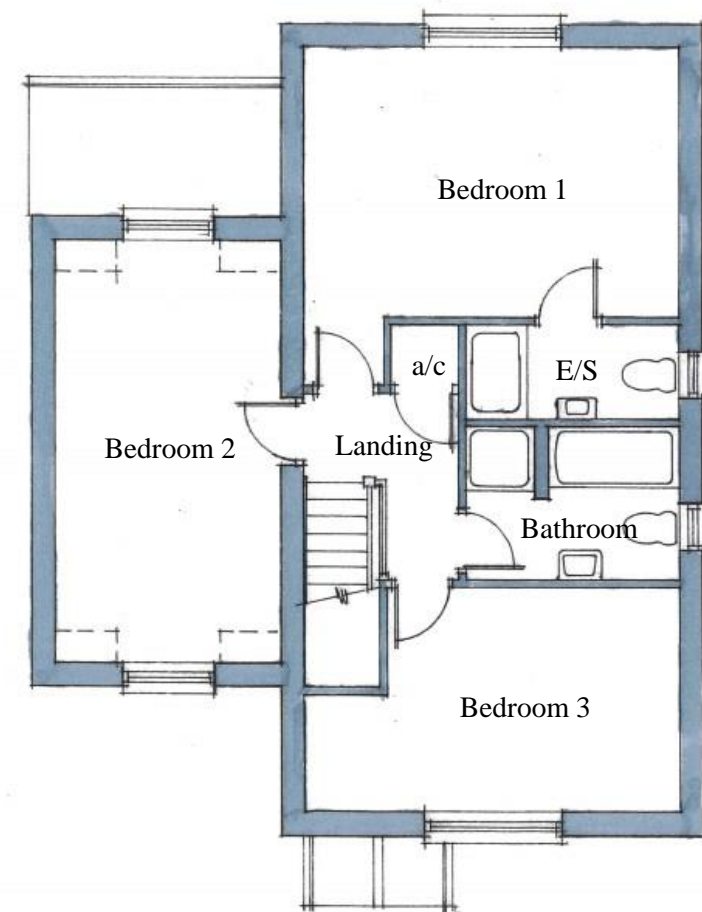
First Floor

Bathroom –	2.75m x 1.95m (9’ x 6’-4”)
Bedroom 1 –	4.95m x 3.55m (16’-3” x 11’-8”)
Bedroom 2 –	2.95m x 5.45m (9’-8” x 17’-10”)
Bedroom 3 –	4.95m x 2.85m (16’-3” x 9’-4”)
En-suite –	2.75m x 1.15m (9’ x 3’-9”)

Total Area – 116.5m² (1,254ft²)



Ground Floor Layout



First Floor Layout