



TRUSSED RAFTER ASSOCIATION

Safe Loading /Unloading Systems

Why do I need to look at my Loading/Unloading Systems?

In the construction industry, 30% of all fatalities are caused by falls from height with a further 21% caused by falling or moving objects. The Health and Safety Executive (HSE) have identified the supply chain as an area of risk with trussed rafter deliveries being seen as giving particularly concern.

How can I decrease the risk?

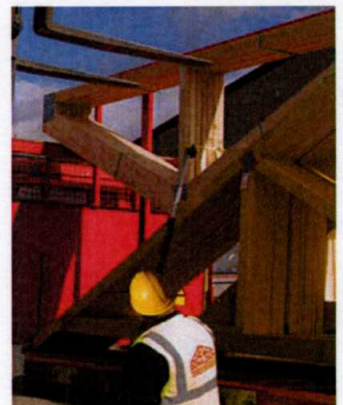
One system, which has been recognised by the HSE as reducing the accident risk is the use of a colour-coded banding system as described below.

How does Colour Coded banding work?

By using 2 different banding colours this enables bands securing trusses within a bundle to be differentiated from those securing the trusses to the lorry. It is recommended that factory employees apply one colour of banding to secure the trusses to each other and that loaders apply a different colour when securing the bundle to the lorry/trailer. The 2 colours chosen should be quite different from each other, one should be dark and the other light in colour to allow for employees/drivers/customers that may be colour blind.



The trusses should be secured to the lorry by banding. This does NOT replace the need for the lorry driver to apply ratchet straps, but is for holding the trusses when the lorry/trailer is stationary; both in the suppliers yard and the customers site.



What happens at the site?

When the driver arrives at site, he should consult the Site Agent and be directed where to park. The ratchet straps are removed and the trusses for that site identified. A forklift should take the weight of the bundle and as it does so, the driver cuts the banding that secures the trusses to the lorry trailer using a telescopic cutting pole. This enables the driver to remain on the ground, thereby eliminating the need for him to stand on the lorry.

What are the benefits?

Plainly and simply, no-one needs to stand on the lorry to unload the trusses. This complies with the Work at Height Regulations, and eliminates one of the biggest risks of injury, namely "falls from vehicles".

Where do I purchase the Banding and Cutters?

Both are commercially available throughout the country. The banding is a cross woven cord strap with a breaking strain of 500kg. The cutters used are "branch loppers", available from most hardware stores.