



# Annual Report and Accounts 2015

## One Hundred and Eighty Ninth Report

**With Balance Sheet at 31 December 2015**  
**Statement of Financial Activities**  
**For the year ended 31 December 2015**

Royal Charter No: RC000417  
Registered as a Charity in England & Wales, Charity No. 208882  
[www.theprintingcharity.org.uk](http://www.theprintingcharity.org.uk)  
The Printing Charity  
Previously known as the Printers' Charitable Corporation



**THE PRINTING CHARITY**  
Caring for people since 1827

**Patron**

Her Majesty The Queen

**President 2015**

HRH The Duke of York, KG

# Contents

## TRUSTEES' REPORT

<b>Chairman's Report</b> .....	<b>3</b>
<b>Chief Executive's Report</b> .....	<b>5</b>
<b>Annual Report</b> .....	<b>6</b>
Objectives and Activities .....	7
Achievements and Performance .....	14
Donors and Supporters 2015 .....	19
Review of the Financial Position .....	20
Strategic Vision and Objectives for 2016 .....	21
Charity Structure, Governance and Management .....	23
Committees .....	24
Council Members' Biographies .....	25
Chief Executive and Secretary Biography .....	27
Management Team Biographies .....	27
Charity Policies .....	28
Financial Delegation	
Grant Making	
Investment	
Public Benefit	
Recruitment, Induction and Training of Trustees	
Reserves	
Remuneration	
Risk Management	
Supplier Payments	
Statement of the Trustees' Responsibilities .....	30
Independent Auditor's Report .....	31
Statement of Financial Activities .....	32
Balance Sheet .....	33
Cash Flow Statement .....	34
Notes to the Accounts .....	35

## THE PRINTING CHARITY

### Patron

Her Majesty The Queen

### President 2015

HRH The Duke of York, KG

### Annual Report and Accounts 2015

One Hundred and Eighty-Ninth Report

Balance Sheet at 31 December 2015

Statement of Financial Activities for the year ended 31 December 2015

Royal Charter No. RC000417

Registered as a Charity in England and Wales, Charity No. 208882

[www.theprintingcharity.org.uk](http://www.theprintingcharity.org.uk)



# The Printing Charity

*previously known as the Printers' Charitable Corporation*

## Promoting independence, choice, security and dignity for those who work or have worked in the printing, publishing, packaging and graphic arts industries and their dependants

The Printing Charity is a Charity registered with the Charity Commission of England and Wales. It is incorporated under a Royal Charter and its governing documents are the Charter and Bye-laws. The Charity was granted its first Royal Charter in 1865. A Supplemental Charter was granted in 1972 and again in July 2014 and amendments were agreed to the Bye-laws in 2006 and again in July 2014.

### Presidents Emeritus

Sir Frank Barlow, CBE  
Sir Jeremy Elwes, CBE ACIS FRSA  
Alan Miller, ACMA  
MC (Bill) Offer, BEd (Hons) HNC FTC  
Lord Black of Brentwood

### Trustees

Jon Wright, FCCA, Chairman  
Steve Sibbald, Deputy Chairman  
Gesä Brinkmann, ACA, CPA, Honorary Treasurer  
Richard Brewster, FCA  
Gary Cullum  
Stephanie de Laszlo, LLM  
Raffiq Moosa  
James Povey  
Brian Skeritt  
Alan Thorburn (from 28 July 2015)  
Julia Cole (from 22 September 2015)

### Chief Executive & Secretary

Neil Lovell (Interim - Joined 15 February 2016)  
Stephen Gilbert (Retired 31 January 2016)

### Registered and Principal Office

First Floor  
Underwood House  
235 Three Bridges Road  
Crawley RH10 1LS

Tel: 01293 542820  
Fax: 01293 542826  
E-mail: [info@theprintingcharity.org.uk](mailto:info@theprintingcharity.org.uk)  
Website: [www.theprintingcharity.org.uk](http://www.theprintingcharity.org.uk)

### Honorary Chaplain

Reverend Canon Dr. Alison Joyce  
Rector of St Brides Church  
Fleet Street, London EC4Y 8AU

### Professional Advisors

#### Auditors Solicitors

RSM UK Audit LLP (formerly Baker Tilly UK Audit LLP)  
25 Farringdon Street  
London EC4A 4AB

#### Solicitors

Lee Bolton Monier-Williams  
1 The Sanctuary  
Westminster  
London SW1P 3JT

#### Bankers

Natwest Bank plc  
16 The Boulevard  
Crawley RH10 1GL

Scottish Widows Bank Plc  
PO Box 1257  
67 Morrison Street  
Edinburgh, EH3 8YJ

#### Surveyor to the Fabric

Michael Chesson & Associates  
2 Milton Crescent  
Eastbourne  
East Sussex, BN21 1SP

#### Investment Advisors

Sarasin & Partners LLP  
Juxon House, 100 St Paul's Churchyard  
London EC4M 8BU

### Charitable Objects

- The relief of printers being aged or poor or distressed.
- The relief of persons who are or were dependent upon printers such as widows, widowers, parents or children being themselves aged or in distress and in need of relief.
- The education of printers and those wishing to become printers.
- The education of the children of printers. (For further details, see the Supplemental Charter of 14th July 2014.)

The Charity was established in 1827. Two further charities were founded and in 1865 Her Majesty Queen Victoria granted a Royal Charter forming the Printers, Pension, Almshouse and Orphan Asylum Corporation. The original Charter was amended over the years, with Supplemental Charters being granted in 1972 and 2014. The most recent Charter changed the Charity's name to The Printing Charity.

### The Objects and Objectives

The Objects and Objectives of The Printing Charity are reflected in the services it offers:

#### Homes

The sheltered homes for older people.

#### Helps

The grants programme.

#### Links

Building links with industry. Fundraising, PR and Marketing.

#### Training & Education

Building links with charities. Training and education.

The creation of these four Cornerstones forms part of the Charity's strategic, tactical and operational plans to assist more people who meet the definition of printers contained in its Royal Charter.

Further details of The Printing Charity's work can be found on The Printing Charity's website: [www.theprintingcharity.org.uk](http://www.theprintingcharity.org.uk) and at the Charity Commission's website: <https://www.gov.uk/government/organisations/charity-commission>

# The Printing Charity – a ‘potted’ history...



How it all began.....

1827 - the Printers' Pensioners Charity was founded by George and Charles Searle and their employer, John King, an independent printer, in the Kings Head Tavern in Poultry, London. It is the UK's second oldest occupational Charity.

1828 - the first dinner of the Printers' Pensioners Charity took place with £310 16s being raised.

1843 - Charles Dickens Esq elected as President of the Charity.

1864 - Charles Dickens Esq elected as President of the Charity a second time.

1865 - the signing of the original Royal Charter by Queen Victoria took place. This formed the Printers' Pension, Almshouse and Orphans Asylum Cooperation.

Increase in growth - in excess of £1,000 raised for the first time.

1964 - the opening of Southwood Court by Queen Elizabeth, The Queen Mother.

2010 - re-launch of the Charity's name to 'The Printing Charity', with the re-branding event held at 11 Downing Street. Thanks to the kind support of Maggie Darling, wife of the Chancellor of the Exchequer.

2014 - granting of the Charity's second Supplemental Royal Charter.



Charles Dickens



The original Royal Charter, signed by Queen Victoria.



From left: Michael Johnson, President, Paul Rudd, Chairman, Stephen Gilbert, Chief Executive & Secretary and Fiona Morris, Trustee at the 're-branding' event in 2010.

# Chairman's Report

Jon Wright - Chairman



I am very pleased to give you my third report as Chairman – these three years have certainly flown by!

We have achieved an incredible amount in 2015. We helped 1,142 people, compared to 685 people in 2014, a massive 67% increase year-on-year. Following are some of the ways in which we achieved this:-

- 257 received unemployment support, mainly through our partnership with Renovo, which helps people made redundant or at risk of redundancy.
- 120 were helped by providing funding to the Stationers' Foundation's Shine Awards initiative for schools.
- 37 financial awards totalling £55,500 were given to young people through our own very successful Print Futures Awards initiative. I was so fortunate to present the Awards at another truly inspirational event. We intend to give more Awards in 2016.
- 48 young people were helped through our link with The Prince's Trust. Since we launched this great partnership four years ago, we have helped 133 people in total.
- We also linked for a second year with the Rory Peck Trust, a Charity dedicated to assisting freelance newsgatherers worldwide. We helped another 30 people through this organisation.
- We have helped 29 people by providing grants to them through the Journalists' Charity.
- We introduced 33 young people to graphics, design and printing, by working closely with Futureproof CIC and Sussex County Cricket Club and Sussex schools in an initiative called Crackit!

We have not included those people we helped by assessing their support needs and signposting them via our Links to other organisations and charities, where appropriate.

We have also not included a great initiative with Proskills UK, helping to fund a teachers' resource to promote apprenticeships for 11 to 18 year olds. Proskills UK has sent out nearly 700 apprenticeship guides to young people interested in our industry and we will endeavour to track how many of those young people eventually join our industry.

We remain convinced that we need to establish more links with other organisations and leverage from these connections, so we are always looking to build relationships with the right partners.

2015 saw us celebrating in style the 150th anniversary of our first Royal Charter, which included an enormously successful trip down memory lane, portrayed by professional actors at the St Bride Foundation, and a Summer BBQ in the grounds of Stationers' Hall. I do hope you were able to attend one of these events. We were very proud to have HRH The Duke of York, KG as our President in 2015 to mark this royal milestone.

We welcomed back Alan Thorburn as a Trustee and gained Julia Cole as a new Trustee on the Council in 2015. They joined an extremely hard-working team of existing Trustees. I thank them all for giving considerable time and expertise to the Charity, for giving me great support, and helping us work to achieve our aspiration of helping 2,000 people a year by the end of 2017. We are truly lucky to have them all.

Our staff based in our Head Office at Three Bridges and in our two excellent sheltered accommodation homes in Basildon and Bletchley work incredibly hard to deliver the Charity's demanding requirements. They have been led by our Chief Executive, Stephen Gilbert, who worked tirelessly, and did so much to make my role easier, and drive the Charity forward. Thank you all. Stephen took early retirement in 2016 and we wish him well. Neil Lovell joined as our Interim Chief Executive & Secretary in February 2016.

The Printing Charity will be even busier in 2016. We are looking to support apprentices and apprenticeship schemes actively, and plans are well advanced with Unite and the British Printing Industries Federation (BPIF) regarding this. We will launch a supporters' scheme in 2016 and continue to identify more people who need our help.

We have so many ideas to take us forward that I can promise a hectic time for us all. I do hope to meet as many of you as possible during the next 12 months. This great Charity has a very important role to play.

Thank you all for everything you do for this wonderful Charity and I repeat my words from last year, that I sincerely hope you will all continue to help us whether as a Trustee, a member of staff, or as a volunteer.

I am very keen to hear back from anybody who has benefitted from our help in the last two or three years. Do please contact me and let me know how you have got on since we helped you.

Jon Wright FCCA  
Chairman



# Annual Report 2015



*The Printing Charity's President (2015), HRH The Duke of York, KG, speaking at the 188th Annual Luncheon*

# Chief Executive's Report

**Neil Lovell – Interim Chief Executive and Secretary**



**The 150th anniversary of the granting of the Charity's first Royal Charter by our first Royal Patron, Queen Victoria, has been a wonderful year for us, ending on a high, with the fact that we have helped 1,142 people. That is a substantial increase on the 685 people helped in 2014 and exceeds our 2015 target of 850.**

As part of our 150th anniversary celebrations, we invited guests in May to an evening at the St Bride Foundation, where professional actors presented snapshots from our history, including the Charity's founding in 1827 at the Kings Head Tavern, Poultry; our first Festival Dinner; a reading of an extract from Charles Dickens' "A Christmas Carol"; the signing of our Charter by Queen Victoria; the London Blitz; and the 1980s' Wapping dispute.

Our celebrations continued in June with an event at Stationers' Hall. We would like to thank everyone who attended and helped us to mark an important year in the Charity's history.

The UK is the fifth largest producer of printed products in the world and, with an estimated £13.5 billion turnover\*, 8,600 employers and 122,000 employees, our printing industry is a major economic contributor and employer. However, the industry needs to recruit and train more young people. The annual Print Futures Awards, helping people aged 16 to 30 years to train for a career in printing, publishing, packaging or graphic arts, is one such initiative of which we are the lead sponsor. This year's Awards attracted the highest number of entries since they were launched in 2003 and we presented 37 Awards at our industry event at the House of Lords, kindly hosted by Baroness Dean of Thornton-le-Fylde, better known as Brenda Dean in the industry.

Other initiatives to help the next generation in print include our sponsorship of a teachers' resource produced by Proskills UK to promote apprenticeships for 11 to 18 year olds nationally and Crackit!, a Sussex-based partnership in schools with Sussex County Cricket Club and Futureproof CIC, introducing 12 to 16 year olds to the potential career opportunities in the creative industries, through linking sports and design.

Our second Supplemental Royal Charter granted in 2014 enables us to help more people in new ways and led directly to our pioneering scheme with The Yorkshire Post. During the past year we have funded an internship for Ismail Mulla, a graduate with a BA in Journalism, who has now been appointed to the paper's permanent staff as a business reporter. We wish him all the best for his career as a journalist.

A new initiative this year, which is going from strength to strength, is with the Journalists' Charity, where we are sharing administrative resources to increase the number of people both charities help.

Another significant new partnership is with The Haven, a breast cancer support centre in West London, where we are helping to fund initial, midway, and closing consultations for people diagnosed with breast cancer. As with all our partnerships, we are helping people who have a connection with the printing, publishing and packaging industry.

Our reach is increasing steadily beyond London and the South East and we are rebuilding our historic links with Yorkshire's print powerhouse. We are also growing our Training and Education partnerships (previously known as 'Futures') to support the need for new talent to join the industry. Initiatives include a bus pass scheme with the Leeds Apprenticeship Training Agency for apprentices and people studying for NVQs in print-related organisations, and helping students on print-related courses at Leeds and Leeds Beckett Universities with 'Getting into Work' courses. We are also continuing to work closely with

The Prince's Trust's Enterprise Programme to help disadvantaged young people in the North of England to set up their own print-related businesses.

Through our partnership with Renovo, a provider of career transition and job search support, we are helping people made redundant from the industry or who are at risk of redundancy. As well as our referral of people through our grants programme, Renovo identifies redundancies in the industry as a result of company restructures or administrations.

Whilst developing new partnerships with other charities, organisations, and trade associations, our Sheltered Homes and financial Helps remain our core focus. Our two sheltered homes, Beaverbrook House and Southwood Court, provide independence for people who have retired from the industry. I would like to thank our Home Managers, Kathy Senior and Margaret Duff, and their staff for all they do in making our homes so special.

Our own Helps programme of financial grants is a major part of the Charity's work, helping people on low incomes with regular financial assistance (RFA) and one-off grants to help pay for things like home adaptations, independent living costs, repairs and maintenance, sensory and mobility equipment, and nursing and care home fees.

I would like to thank our staff, Trustees, and volunteers for their fantastic support this year and continued commitment to the Charity's aspiration of helping 2,000 people per annum by the end of 2017.

**Neil Lovell**  
Interim Chief Executive & Secretary

\* BPIF UK Printing: The Facts & Figures

# Annual Report 2015

## The Printing Charity is the printing, packaging and publishing industry's leading Charity

The financial statements have been prepared in accordance with the accounting policies set out in notes to the accounts and comply with the Charity's governing document, the Charities Act 2011 and Accounting and Reporting by Charities: Statement of Recommended Practice applicable to charities preparing their accounts in accordance with the Financial Reporting Standard applicable in the UK and Republic of Ireland published on 16 July 2014.

If you have worked for three or more years in an organisation that produces a printed output – from printing, packaging, publishing, operating presses, driving, cleaning, advertising, photography, journalism, graphic arts, through to making ink and recycling paper – The Printing Charity is here to help you and your dependents.

- We help with one-off grants and regular support
- We help people of all ages
- We support people who want to join our industry
- We provide help in retirement
- We aim to help more people each year

### Aims

Through our services to promote independence, choice, dignity and security for individuals and their dependents, with a connection to the printing, packaging, publishing, graphic arts and allied trades, we deliver our aims through our four Cornerstones – Homes (sheltered accommodation), Helps (one-off and regular financial grants), Links (industry and charity partnerships) and Training & Education (encouraging new people to join our industry).

## Case Study Ismail Mulla



### From intern to full-time business reporter

Following a 13-month internship funded by The Printing Charity, Ismail Mulla was appointed to The Yorkshire Post's business desk.

Ismail received training and mentoring during his salaried internship and is very proud to be working on the newspaper as a full-time business reporter. He has dreamed of being a journalist since he was ten years old.

He says: "This wouldn't have been possible without the Charity's help and support from its Yorkshire Committee, which backed my appointment as an intern. I know this pioneering initiative was uncharted waters for the Charity, so thank you for taking the leap of faith.

The internship has not only given me the opportunity to learn from some of the best in the business, but also a chance to show my enthusiasm and ever developing abilities."

Bernard Ginns, Business Editor of The Yorkshire Post, adds: "I would like to thank The Printing Charity for developing this innovative and worthwhile project."

Reflecting on his time as an intern at the paper, Ismail crunched some numbers. Over the 13 months, he visited several great towns and cities in the region and beyond, covering a variety of stories from a multitude of sectors. He had 57, and counting, by-lines published in The Yorkshire Post and Yorkshire Evening Post. He carried out 7 profile interviews, had 7 stories published on the front of the business pages and filled 7 notebooks.

## Case Study Sherrie-Leigh Webb

### Fulfilling her ambition

Sherrie-Leigh Webb received a Print Futures Award in 2015, which helped her to undertake a photo etching course at Northern Print, a studio in Newcastle upon Tyne.

After completing the course, she joined the studio as a member, which allows her to use the printmaking studio and darkroom facilities to create further photo etchings for her to develop her technique and work.

As well as learning a new printmaking skill, she was also able to purchase an iMac and Photoshop software, which are enabling her to develop ideas and images digitally to create an ongoing series of photo etchings that she will continue to print over the course of this year and exhibit at events.



Sherrie-Leigh receiving her Print Futures Award from Jon Wright, Chairman, The Printing Charity.

A photo etching by Sherrie-Leigh.





# Objectives and Activities

**This section reports on what we set out to do in 2015 and what we actually achieved. As well as the numbers, there is a description of the activities that we undertook during the year.**

The Charity's Overall Objective	Achieved
To increase the number of people helped by at least 24% (685 in 2014)	66.72%

Number of people helped in 2015:

1,142

Number of people helped in 2014:

685

## Homes

The Charity is pleased to offer accommodation at its two purpose built sheltered homes, Southwood Court in Basildon and Beaverbrook House in Bletchley. The Homes have Almshouse origins and are part of the Charity's commitment to look after older people. There are 40 one bedroomed apartments at Southwood Court and 32 at Beaverbrook House.

Apartments are available to those who have worked in the print or allied trades and meet the Charity's criteria. Eligible applicants are placed on a list, which is regularly reviewed, so that vacant apartments are offered to those in most need, irrespective of when the application was made.

The principle behind everything we do is that our residents should enjoy independence and the freedom to come and go as they please, while living in comfortable and secure accommodation. Residents should feel confident in the knowledge that support is available, from us or outside agencies, should the need arise.

Trustees are aware that there is a demand for this type of accommodation across the UK and that demand is increasing in line with an ageing population. To assist those who do not live near the existing sheltered homes, or do not want to relocate, the Charity provides information on sheltered homes nationwide via a link on its website to Elderly Accommodation Counsel (EAC) at [www.eac.org.uk](http://www.eac.org.uk)

## Helps

The number of people we helped last year saw a sharp increase, from 685 in 2014 to 1,142 in 2015. This help was expressed in a number of diverse ways, such as contributing to heating bills, mobility scooters and simply topping up people's weekly income to buy the essentials. It was often sobering to witness the level of income some of our beneficiaries attempted to live on.

In addition, the Charity contributed towards the production of some Apprenticeship Brochures, which Proskills sent out to just under 700 people.

## Partnerships

Our ongoing relationships with other organisations, work that falls under our 'Training & Education' category, has continued and developed through 2015.

By way of example, we could point to The Prince's Trust and the way in which we were able to support even more young people, very often from the most difficult of circumstances. Providing them with the opportunity to set up their own commercial ventures, gave them a chance for a fresh start, not only in the work place but also, for some, in life.

We established new relationships with partners who provide, amongst other things, support for those with breast cancer (The Haven), school children who wish to gain a sense of what the world of print may hold (Crackit!) and those who have left school and want to explore what a career in print may look like, whether physical or digital (We Do Print).

## ENDOWMENT FUNDS

### Association of Printers' Trusts

Created by way of a Charity Commission Scheme on 9 June 1992 as a subsidiary Charity of the Printers' Charitable Corporation, this brought together 24 charities, which had been founded between 1863 and 1939. They were:-

1. The Charity of George Biggs, regulated by a Scheme of the Charity Commissioners of the 24th April 1863;
2. The Charity of John Clarke Bloomfield, founded by will proved on the 29th April 1889;
3. The Charity known as The Thomas Buck Pension Charity founded by will of Sarah Few Buck proved on the 1st March 1912;
4. The Charity of Rosanna Figgins, founded by will proved on the 17th March 1900;
5. The Charity of Robert Hamild, founded by will and comprised in an Order of the High Court of Justice (Chancery Division) of the 17th March 1902;
6. The Charity of Herbert Heathe, founded by will proved on the 15th December 1939;
7. The Charity of John Hogg, founded by will proved on the 24th September 1909;
8. The Charity of Henry William Hutchings, founded by will proved on the 20th December 1894;
9. The Charity of William Kelhier, founded by will proved on the 5th February 1925;
10. The Charity known as the Charles Edward Layton Pension Fund, founded on the 13th November 1900;
11. The Charity known as the John T Lane 1897 Gift;
12. The Charity of Mary Ann Masters, founded by will proved on the 25th May 1921;
13. The Charity of Elizabeth Mitchener, founded by will proved on the 10th July 1920;

14. The Charity of Notting for Pensions, founded by will proved on the 15th March 1911;
15. The Charity of Frances Ann Pardoe, founded by will proved on the 17th March 1900;
16. The Charity of the Right Honourable George Allardice Baron Riddell, regulated by a Scheme of the High Court of Justice (Chancery Division) of the 14th July 1937;
17. The Charity known as Rowarths Annuity Will Trust, founded by will proved on the 5th May 1895;
18. The Charity of Benjamin Franklin Stevens, founded by will proved on the 16th May 1902;
19. The Charity of Charlotte Stevens, founded by will proved on the 17th September 1903;
20. The Charity called The Sophia Tomlyn Pension Charity, founded by will of George Tomlyn proved on the 11th April 1938;
21. The Charity called the Elizabeth and Robert Trotter Pension Charity, founded by will proved on the 9th May 1925;
22. The Charity of William Cooper Virgo, founded by will;
23. The Charity known as The Whittingham for Pensions Charity, founded by will of Jane Whittingham;
24. The Charity known as The Edward Cadbury Charitable Trust.

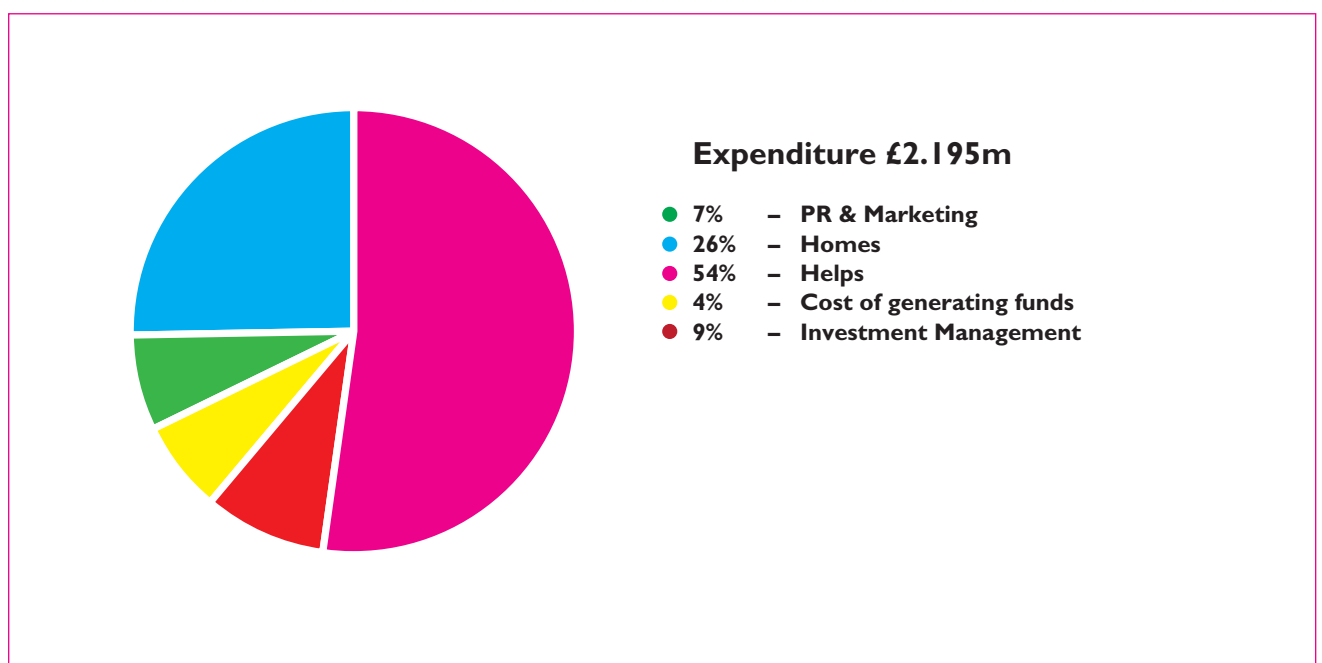
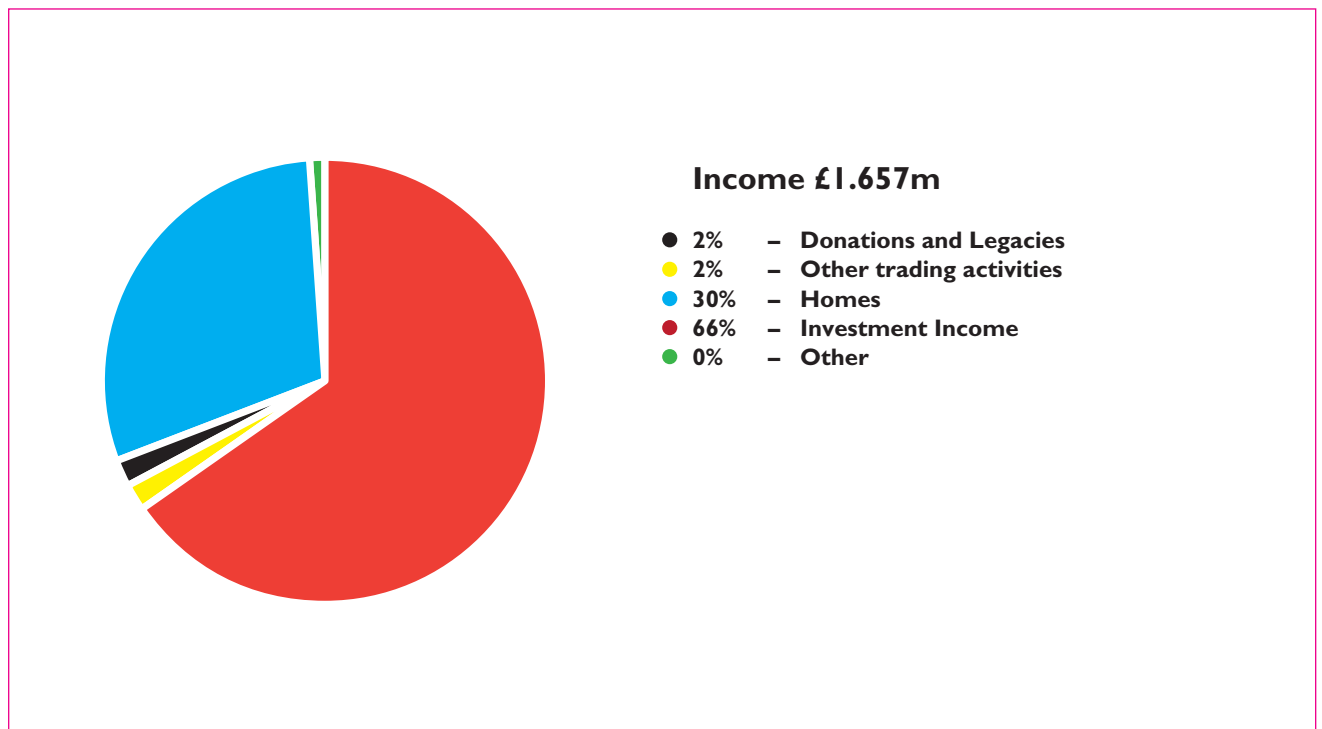
The Charity was known as the Printers' Charitable Corporation Trust and the order refers to this name. The Trustees subsequently changed the name to the Association of Printers' Trusts. The trust was initially set up as a subsidiary charity of the Printers' Charitable Corporation. In 2010 the Charity Commission agreed to a further scheme, which subsumed the Association of Printers' Trusts into the Printers' Charitable Corporation as an endowment fund.

### Caxton Convalescent Home Trust

The Caxton Convalescent Home was built at Limsfield, Surrey and opened in 1895. The home became a reality because of the effort of John Passmore Edward, a notable Victorian philanthropist. In 1974 Caxton Convalescent Home was subject to a Charity Commission Scheme, which vested the administration of the Charity and the property in the Printers' Charitable Corporation.

In 1977 the convalescent home was sold because the annual cost of reinstating the home greatly exceeded the income. Following the sale, the Printers' Charitable Corporation offered convalescent care at Caxton Lodge in Eastbourne. This too was eventually sold due to a lack of demand. The funds were invested on behalf of Caxton Convalescent Home Trust as a subsidiary charity of the Printers' Charitable Corporation. In 2010 the Trust was subject to a further Charity Commission Scheme and the endowment fund was created.

# The Charity's Performance Overview for 2015



# Helps

**Total Number of People Helped, via one-off Grants and Regular Financial Assistance, by Region across the UK in 2015**



## 2015 Objective

Spend a minimum of 95% of the budget

## Achieved

94.56% achieved



We have many friends who we continued to work with in mutually beneficial ways, organisations that allowed us to reach even greater numbers of people through their networks, connecting in to the people they serve.

Our relationship with The Rory Peck Trust facilitated our direct support for freelance journalists working abroad. This help took the shape of safety-training before assignment, through to providing health support or insurance for those in need. The Soldiers, Sailors, Airman and Families Association (SSAFA) provided another great organisational link and resource, with people applying to us through their grants system for a multiplicity of reasons.

The newest, and, perhaps, the stand-out among these partners for 2015 was our work with Renovo, an out-placement support service based in York. Our work together enabled us to 'be there' with people who are experiencing redundancy and workplace changes and help them negotiate what, for many, is a particularly painful transition.

To look back on 2015 and see that we helped around a thousand people is heart-warming indeed.

**Mark Johnson**  
Helps & Futures Manager

*Jane worked in the newspaper sector and says: "I would just like to say thank you once again for your help towards Mum's headstone and for all your help over the last few years. It has been hugely appreciated by all the family and we are extremely grateful for your help in making Mum's last few years more comfortable." Jane's Mum also worked in the printing industry.*

J.D., Northampton

*Chris worked in print and is appreciative of the Charity's ongoing support: "We want to thank you very much for your continuing assistance, which we always appreciate, but it has helped even more this year."*

C.P., Essex

*Sonia worked in binding and says: "Just to say a huge thank you for the very much appreciated grant. I cannot begin to say how very grateful I am for your very generous donation." Sonia's grant went towards purchasing a new boiler.*

S.N., Worcester

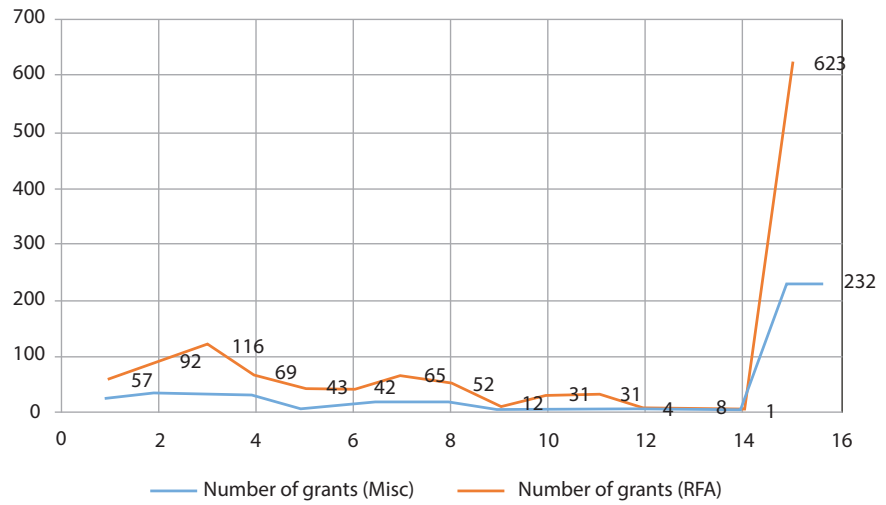
*Alan worked in print and has been a long-term recipient of our Regular Financial Assistance. He comments: "I really do appreciate the help and support of The Printing Charity. Without charities like yours, people like my family would be totally lost. Thank you."*

A.M., London

### Analysis of Grants and Regular Financial Assistance Made

This chart demonstrates the impact of the Charity's approach to grant giving – be it one-off grants or Regular Financial Assistance (RFA).

The Printing Charity does not use a 'one size fits all' approach but looks at each case individually. The differing size of grants reflects the type of application, which can change from region to region and the cost of living, which also varies. While being a national Charity, we see the person behind the form and try to respond to their individual needs.



Our support is, essentially, very simple indeed. We provide one-off grants that can be used for any number of reasons, whether that be to contribute to home adaptation or provide for an unexpected bill. Our Regular Financial Assistance grants allow us to 'top-up' an individual's weekly income by up to £35 - a sum that, for many, is critical to make ends meet. Both of these types of support tend to be most relevant for the elderly and those in retirement.

Where we impact a younger generation, is through our work with schemes such as the Print Futures Awards. Grants to those aged between 18 and 30 who wish to embark upon, or progress within, the wider world of print. This brings to us many young people who want to share their work and the whole process inspires us, just as much as the Award helps them.

The Prince's Trust brings to us cases of young people who have not had the best start in life and again, this allows us to support people at these early stages of their career. However, if there is one thread that joins them all, it is the fact that there is considerable disadvantage which is not being addressed, and which provides us with daily reminders of the impact of our work.

### Grants to Organisations

Following on from those organisations who allow us to support more people through their own networks, we have those who we give money to as an organisation for it to filter down.

We became involved in a very exciting venture with our friends at Futureproof, that allowed us to introduce school pupils to the world of print and the multiple options that are within, in a programme named Crackit! This venture fused print with cricket to get young people not only thinking but also doing. We were very pleased to have worked alongside Sussex County Cricket Club to make this such a success. To go and watch the sessions in action was a wonderful lesson in how a comparatively small amount of money could bring such positive results.

The Charity also supported the Shine School Media Awards, which are designed to encourage team working by pupils to produce a school magazine, newspaper, newsletter, digital edition or website.

A new relationship that we established was with The Haven - a Breast Cancer Centre in West London, where we have started to significantly increase our funding. A process has been established to ensure every person has an appropriate link to the industry, including their eligibility for financial help, and this is all recorded within the limitations of patient confidentiality.

Finally, and far from the least, we supported Ismail Mulla, an apprentice at The Yorkshire Post, through the whole of 2015. A commitment made all the sweeter when Ismail was offered a full-time job there at the end of his year.

*Ismail's Case Study can be found on Page 6.*

# Achievement and Performance



Kathy Senior  
Manager Beaverbrook House

## HOMES

### Beaverbrook House

Residents continue to enjoy and benefit from a variety of activities within the home, some organised by the staff and others by the residents themselves.

Activities include Darts, Bingo, Whist drive, fish and chip suppers, quiz nights and film evenings, breakfast together once a month, Jukebox Bingo and race nights, plus afternoon teas.

This all helps promote a community spirit within the building and enables residents to socialise if they wish.

We hold coffee mornings twice a week which are well attended and supported by volunteers and residents. These offer further opportunities for interaction and guest speakers are often invited to attend these events to provide useful and interesting subject matters for all.

We hold regular resident meetings which enable the residents to be updated with all information regarding the building and to discuss any needs they may have. We had a great Christmas party and wonderful meal and were entertained by a local drama group of children singing and dancing. We also celebrated many birthdays, where the residents, staff and associated families got together to have a good time.

We had some new residents who have settled into Beaverbrook as very active members and who all enjoy being part of our big family. They are all very supportive of one another.

I would like to take this opportunity to thank all the staff and volunteers who help make Beaverbrook such a warm and welcoming place for all.

**Kathy Senior**  
Home Manager, Beaverbrook House

2015 Objective	Achieved
97% Occupancy	97.01%



Front aspect of Beaverbrook House



The gardens at Beaverbrook House



## HOMES

### Southwood Court

This has been a busy year for Southwood Court, with two milestone birthdays and the hosting of the Charity's Annual General Meeting.

Dorothy Comer celebrated her 100th birthday with an afternoon tea party in April and Elsie Allchin's 100th birthday celebrations took place in May.

Both Dorothy and Elsie worked in print, Dorothy in the hand finishing section of The Baynard Press and Elsie at Lamson Paragon Printing Works in Canning Town. They both say one of their proudest moments was meeting Prince Charles, when he opened the rebuilt Southwood Court in 2001.

In June we welcomed the Mayor of Basildon, Councillor Don Morris, and Deputy Mayor, Councillor Danny Lawrence BEM, as our guests of honour at the Charity's Annual General Meeting. Councillor Morris said that he was very impressed with our facilities here.

Gary Cullum, a Trustee and editor of Production Journal, interviewed Elsie Allchin and her son, Terry, and fellow residents, Joan and David Wiggins for an article about Southwood Court in the magazine.

Residents enjoyed our annual outing to Maidenhead by coach, where they took a riverboat trip on the Thames, with lunch served on-board. We would like to thank Brian Skerritt for once again organising this popular outing.

Our regular Macmillan Coffee Morning held on the last Friday of September raised £430 this year. There was a good turnout for the river cruise organised on the Pocahontas by our Residents' Social Club. Leaving from Gravesend, we enjoyed lunch and afternoon tea as we sailed up the Thames.

Residents also entered into the spirit of a murder mystery evening arranged by our Residents' Social Club at Southwood Court in November. The themed evening was run for us by a local theatre company.



Bob and Margaret Duff (Manager),  
Southwood Court

December was a busy month with one of our residents, George Page, celebrating his 90th birthday with his family and friends. The following day, we headed to Stockbrook Manor for Christmas lunch and then finished the year's festivities with a relaxed Christmas party at Southwood Court on 18th December.

I would like to thank our residents, staff, Social Club, and Homes Committee for helping to make Southwood Court such a pleasant, friendly place to live.

### Margaret Duff

Manager, Southwood Court



Elsie Allchin (Resident), with The Mayor of Basildon, Councillor Don Morris (left) and Deputy Mayor of Basildon, Councillor Danny Lawrence BEM, at the Charity's 2015 Annual General Meeting

**Average Age**

80

**Average Length of Stay**

15 years and 2 months

### Subsidy/provision – Butlin House

As part of the Terms and Conditions of the sale of Butlin House, residents at the time the nursing home was taken over by Goldcare Limited and who had a print connection, have continued to receive a subsidy calculated at £100 per week from The Printing Charity.



(From left) Deputy Chairman, Steve Sibbald, Deputy Mayor of Basildon, Councillor Danny Lawrence BEM, The Mayor of Basildon, Councillor Don Morris, Chairman, Jon Wright and Chief Executive & Secretary, Stephen Gilbert, at the Charity's 2015 Annual General Meeting.

# Partnerships

Throughout all we do, we continue to keep in view the pillars on which the Charity was built. We support people with a connection to the print, publishing and packaging industry and recognise that we need to grow strong partnerships to reach more people. We remain committed to building on our successes and forging new partnerships in 2016.

## Links

Links is the networking platform, which joins the Charity to like-minded organisations, be they within the printing, publishing, packaging and graphic arts industries or other charities. Our industry links are growing and strengthening.

The Printing Charity has support from trade associations:-

- Association of Print and Communication Managers (APCOM)
- British Association for Print and Communication (BAPC)
- British Printing Industries Federation (BPIF)
- Federation of European Screen Printers Associations (FESPA)
- Independent Print Industries Association (IPIA)
- CDI Yorkshire

It enjoys good links with corporate organisations, such as:-

- AGFA
- Consorcio Group
- Duplo
- Earth Island
- Heidelberg
- Kodak
- Konica Minolta
- Renz UK Limited
- Ricoh
- VPress

And has close working partnerships with:-

- St Bride Foundation
- Unite the Union
- Worshipful Company of Stationers and Newspaper Makers
- Commercial Foundation

The Charity has maintained its existing contacts with organisations such as Soldier Sailors Airmen Families Association (SSAFA) and Christians Against Poverty, as well as forming new ones e.g. Age UK Crawley. The Charity continues to have well-established links with other charities, that provide reliable and trustworthy sources of advice and guidance:-

- Money Advice Trust with The National Debt Helpline
- Step Change (CCCS)
- Elderly Accommodation Counsel (EAC) with the accommodation website
- Relatives & Residents' Association

Advantage Age	Sign Directions
Age Concern Espana's website	Sign-Link
Argyllshire Advertiser	Southend Echo
BAPC Newsletters	Spark – East Sussex County Council
Basildon Echo	The Advertising Bureau
Basildon Recorder	The Daily Telegraph
Booktrade	The Journalists' Charity Newsletter
BOSS Today	The Late Edition
BPIF Training – Executive Search	The Scotsman
British Print (South Eastern)	The Times
CDi Yorkshire	The Times (Scottish)
Crawley Observer	The Yorkshire Post
Crawley & Horley Observer	The Yorkshire Evening Post
Digital Printer	Together
First Wakefield Enterprise Partnership	Unite the Union
Giving Times	Wigan Observer
Innovation in Print	<a href="http://www.braintreeandwithamtimes.co.uk">www.braintreeandwithamtimes.co.uk</a>
InPrint	<a href="http://www.bullfax.com">www.bullfax.com</a>
In Publishing	<a href="http://www.business.scotland.gov.uk">www.business.scotland.gov.uk</a>
Image Reports	<a href="http://www.cardiomyopathy.org">www.cardiomyopathy.org</a>
North Norfolk News	<a href="http://www.clactonandfrintongazette.co.uk">www.clactonandfrintongazette.co.uk</a>
Manchester Evening News	<a href="http://www.convertermag.co.uk">www.convertermag.co.uk</a>
Parkinson's UK Newsletters	<a href="http://www.creative-edinburgh.com">www.creative-edinburgh.com</a>
Periodical Publishers' Association (PPA)	<a href="http://www.5fifteen.co.uk">www.5fifteen.co.uk</a>
Print Business	<a href="http://www.halsteadgazette.co.uk">www.halsteadgazette.co.uk</a>
Print Monthly	<a href="http://www.holdthefrontpage.co.uk">www.holdthefrontpage.co.uk</a>
Print Solutions	<a href="http://www.largeformatreview.com">www.largeformatreview.com</a>
PrintWeek	<a href="http://www.maldonandburnhamstandard.co.uk">www.maldonandburnhamstandard.co.uk</a>
PrintWeek LinkedIn	<a href="http://www.newsunited.com">www.newsunited.com</a>
Process Industry Match	<a href="http://www.outputmagazine.com">www.outputmagazine.com</a>
Production Journal	<a href="http://www.sixtyplusurfers.co.uk">www.sixtyplusurfers.co.uk</a>
ProSkills UK	<a href="http://www.southendstandard.co.uk">www.southendstandard.co.uk</a>
Pulp and Paper Logistics	<a href="http://www.thedukeofyork.org">www.thedukeofyork.org</a>
Quick Print Pro	<a href="http://www.westsussextoday.co.uk">www.westsussextoday.co.uk</a>
Rotherham Business News	<a href="http://www.worcesternews.co.uk">www.worcesternews.co.uk</a>

## PR and Publicity

The Printing Charity's news, events, partnerships and case studies have been covered online and in print, in magazines and newsletters for the printing, publishing, and not-for-profit sectors, as well as national and regional newspapers:-

Use of social media is playing a role in the Charity's communications mix, particularly with colleagues in the printing and publishing industries via Twitter and LinkedIn. In particular, 'blogs' and 'tweets' by previous Print Futures Awards' winners were effective in helping to attract a record number of applicants for this year's Print Futures Awards. The Charity plans to continue working with previous winners in this way, as part of the promotional activity for the 2016 Print Futures Awards.

## EVENTS

The Charity continues to enjoy the long-term support of Print Week and the British Printing Industries Federation (BPIF). We are the chosen Charity for the 'Print Week Awards' and the British Printing Industries' 'British Book Design and Production Awards'.

2015 saw a very special year for the Charity, in which it celebrated the 150th Anniversary of the signing of the Royal Charter by Queen Victoria in 1865. Alongside the 188th Annual Luncheon, which proved to be a successful event with over 160 guests, it was marked with two additional events – an interactive 'walk through history' at St Bride Foundation and a Summer BBQ at Stationers' Hall.

His Royal Highness The Duke of York, KG, in his role as The Printing Charity's President for 2015, attended the Charity's 188th Annual Luncheon at Stationers' Hall, London. The Duke of York said it had been an honour to be The Printing Charity's President for 2015 and congratulated the Charity on what it has done and continues to do to help people in difficulty, as well as young people coming into the printing industry to develop the skills they need. Speaking at the event, The Duke of York

said: *"Printing is part of life, but it requires skills. Thank you to everyone here today for the work you do to raise the printing industry's profile and encourage young people to become skilled."*

Thank you to everyone who supported us in 2015 and who are planning to support us in 2016 and beyond. Your efforts make a real difference to those who work or have worked in our industry and are in need of help.

## Alison Braganza

*Fundraising and Marketing Manager*



*“Thank you! We are very grateful to all the people and organisations who give so much of their time and money to help us to help those in need. We would not achieve what we do without your support, and this immense contribution is reflected in the tremendous leap in the numbers helped in 2015. Thank you all.”*

Jon Wright, Chairman, The Printing Charity

#### **Donors/Supporters 2015**

A Gissing  
Asahi Photoproducts (UK) Ltd  
Association of Jewish Ex-Servicemen & Women  
Daily Mail & General Trust  
David Samuel  
E J Gumery & Sons  
Heidelberg  
Intelligent Finishing  
Jack Grimshaw Will Trust  
Morgana  
Mr P Andrews  
Mr D L & Mrs N J Barr  
Mr D A Bickell  
The Late Mr R J Byland  
Mrs L Cansdale  
G J Camcross Esq & Mrs S E Camcross  
Mrs Rita Cunningham  
Mr R Elvidge  
Mrs O B Fell  
Mr T Ford  
Mrs S Goodwin

Mrs I Greaves  
Mrs S Greig  
Mr & Mrs Hewlett  
Mr J A Holbrook  
Mr B & Mrs D Hollick  
Mr K Lewis  
Mr M O Lovesey  
Mr J A & Mrs C J Mayston  
Mr Earl Neish  
Mr F A Pibworth  
Mrs C Reeve  
Mr D W D & Mrs M Watkins  
Mr D G & Mrs M Williams  
Mrs P Moran (In Memory of Ivy Edwards)  
Mrs V Moran (In Memory of Ivy Edwards)  
Roberts Mart & Company Ltd  
R Williams  
Ryan Tym  
Saxoprint  
The Privy Purse Charitable Trust  
The St Bride Foundation  
The Red Pepper Press Ltd  
We Are Promotional Products



# Review of the Financial Position

In 2015, net gains on investment were negligible £123k which was predominantly due to the general weakness of the stock markets. This, coupled with sales of investments, resulted in a £202k reduction in the net position of The Printing Charity's investments, bringing their value to £31,542k (2014: £31,744k) at 31st December 2015.

Our policy is to maintain a balanced budget and we aim to break even except for key expenses. The implementation of FRS 102 resulted in a restatement of previously reported results, as we now need to include investment income as part of our reported income. The Charity had accounted a deficit of £538k to the end of 2015, realised gains from our investments were £1,801k, however unrealised losses of £1,678k (changes to market value of our investments) reduced our net movement in funds to a loss of £415k, compared to surplus of £322k in 2014. This is the result of lower net gains on investments (£123k in 2015; £527k in 2014) and the continuing success of the Charity in increasing the amount of helps we have been providing. We significantly grew the number of people being helped from 685 to 1,142 which resulted in significantly higher costs for grants of £910k in 2015 (2014: £674k).

Our income mainly relates to investment income, which remained stable at £869k (2014: £869k). Our other income sources also did not move significantly, so that the total income remains broadly the same year on year (2015: £1,657k; 2014: £1,672k). Our net cash outflow decreased marginally to £70k in 2015 (2014: £135k).

The Printing Charity's unrestricted reserves amount to £34,896k plus endowment reserves of £1,440k and restricted reserves of £5k, giving a total of £36,341k, a decrease of £415k against 2014 and leaves the Charity in a strong financial position for the coming year.

## Policies

Our policies on reserves, taxation and supplier payments have remained unchanged and are as follows:

- Our financial reserves provide the income and capital growth to fund The Printing Charity's charitable activities by subsidising residents in our homes and meeting the full cost of Helps payments. The level of reserves is monitored regularly and reviewed annually.

- The Printing Charity is a registered Charity which can claim exemption under section 505 (Income and Corporation Taxes Act 1988) for income and gains which are applied for charitable purposes. The Charity is not registered for VAT.
- The Printing Charity does not impose standard payment terms on its suppliers, but agrees specific terms with each supplier and then pays in accordance with this agreement.

## Principal risks and uncertainties

### *Fluctuation of investment returns*

The Printing Charity heavily relies on its investment income to fund its activities. A major devaluation of its investments could severely impact the ability to operate and to increase the number of people being helped. We rely on the support of our Investment Managers and the Investment Committee to reduce and monitor this risk appropriately.

## Forward looking factors

The Charity has entered into a number of projects in 2015 to ensure it can continue helping more people in 2016 and increase The Printing Charity's impact in the future.

## **Gesa Brinkmann, ACA, CPA**

*Honorary Treasurer*

# Strategic Vision and Objectives for 2016

The Charity has significant cash and unrestricted reserves. The cash and unrestricted reserves represent past donations, which have been carefully managed and have now grown to some £571k in cash and £30 million in unrestricted investments. Following the sale of Butlin House at the end of 2010, Trustees met during 2011 and reviewed the Charity, its future and, in particular, the use of these accumulated donations. After deliberation, Trustees resolved to make funds available and this expenditure or investment would be made in new areas of work, which are known as Future Proposals, including Training & Education.

In reaching this decision the Trustees were mindful of The Charity Commission's guidance, which stated that donations should not just be built up in reserves until they become a *de facto* endowment fund. The Commission's view is that this is unacceptable and not in accordance with the donors' wishes.

The Charity changed the Objects of the Royal Charter in 2014, widening the occupational definition, to include all related forms of print and expand its ambitions to help in the area of training and education.

## 2016 Objectives

**The Charity's Overall Objective for 2016 is to help at least 1164 people.**

**The others relate to the four Cornerstones – Homes, Helps, Links, Training & Education.**

### Homes Objective:-

**Achieve at least 97% occupancy**

### Helps Objective:-

**Spend a minimum of 95% of the budget**

The Trustees remain committed to maintaining the sheltered apartments at Basildon and Bletchley. However, there are no plans to build any additional homes.

The Trustees have identified the Elderly Accommodation Counsel as a partner who can assist in signposting those in need of accommodation outside of Basildon and Bletchley, via its website. The website is searchable by type of accommodation and geography. The Printing Charity continues to support those who wish to live in local sheltered homes via its Helps Cornerstone.

The long-term plan remains to identify areas where there is likely to be demand from those who have worked in the printing, publishing, packaging and graphic arts' industries and identify suitable providers. This will enable the Charity to signpost sheltered housing via its website and Helps service.

Trustees expect an increase in funds being available to meet the anticipated demand that should grow as a result of the Charity's increasing profile, the economic situation within the UK and Ireland and new developments and services that will come on stream during 2016 under the Helps Cornerstone.

The Charity's grant making under Helps will be maintained and will be a key and core feature of this Cornerstone. An objective has been set which will aim to achieve continued growth in our traditional grant making areas. However, in light of the economic circumstances and the changing needs of those who work or have worked in the industry, new services are coming on stream, developed in partnership with other organisations. These partnerships take the form of joint working, where Trustees feel that this is the most cost-effective use of the Charity's funds.

The Charity will continue its existing arrangements with the Prince's Trust, the John Crosfield Foundation, Chiumento and Renovo, expanding these to take in new innovations, which will be generated by the Charity's staff at the Directorate offices in Three Bridges, together with the efforts of the two area committees.

Trustees believe that a combination of increased demand for traditional grants, together with the new services that are being added, including Training & Education (formerly known as 'Futures'), will allow the Charity to maintain its aspiration of helping 2,000 people a year by the end of 2017.

## Links Objectives:-

**Identify 12 potential charity partners, to extend our national reach**

**Identify 6 potential industry partners, from which to raise the profile of our work**

Since 2011's strategic review, the Charity's profile has increased. However, given the small number of staff and the fragmented nature of the industry that the Charity serves, links to the industry and other charities are vital if The Printing Charity is to achieve its aim of helping more people.

Links is the Cornerstone where the Charity drives forward the message to the industry "can we help your people". This is our networking platform where we link back into the industry and also to other charities, so that we can reach out to people via the industry, unions and charities to find those people who may need our help. Over two thirds of our grants are referred to us by a third party. We need to establish further links if we are to reach more people and tell them what we do and the services we offer.

The Charity will build on these links by attending relevant conferences and seminars, making presentations, identifying and meeting relevant and specific industry and charity partners. We intend to work with our Trustees to use their valuable connections in this respect. We believe that some of our industry and charity partners may, in time, become integral to our services.

## Fundraising and Investment

This aims to ensure that the expansion of services is sustainable. It involves raising funds and encouraging individuals to give time as well as, or as an alternative to, cash. The Charity's investment portfolio is responsible for 66% of all income. The Trustees employ Sarasin and Partners LLP to manage the investment portfolio on their behalf. The details of the Investment Policy can be found on Page 28. Trustees expect the portfolio to remain an important part of the Charity's income for the foreseeable future. There are no plans to add to the reserves and, any monies raised through fundraising and events, will be spent on the Charity's activities.

### Objectives

#### Events and Donations:-

**Create a robust supporters package to raise greater awareness of our work**

#### Investment Income:-

**Achieve at least budget income**

**Achieve a return of 3.5% above inflation from the investments**

People have been relying on the Charity for 188 years and we want them to be able to rely on us for as long again. For this reason, we need to look at how we obtain the money used to fund our services.

A major part of the current income stream is derived from the investment portfolio. However, it can be variable and there is a limit to the amount of money that the portfolio can generate. For this reason, alternative income streams need to be developed.

The Charity's major initiative for 2016 is to review, and enhance our membership and supporters base, with the aim of further increasing our profile. We remain convinced that this will not only provide income, but help us achieve our aspiration of helping 2,000 people a year by the end of 2017. Our experience to date has demonstrated the importance of engaging with the industry and marketing what we do by 'word of mouth'.

The key objective of generating income is sustainability. The Charity will not be looking to increase its reserves. The money raised will be spent on those in need. Furthermore, because of the strength of the Charity, it can be confidently said that for every pound raised, one pound will be spent on those we support.

## Training & Education

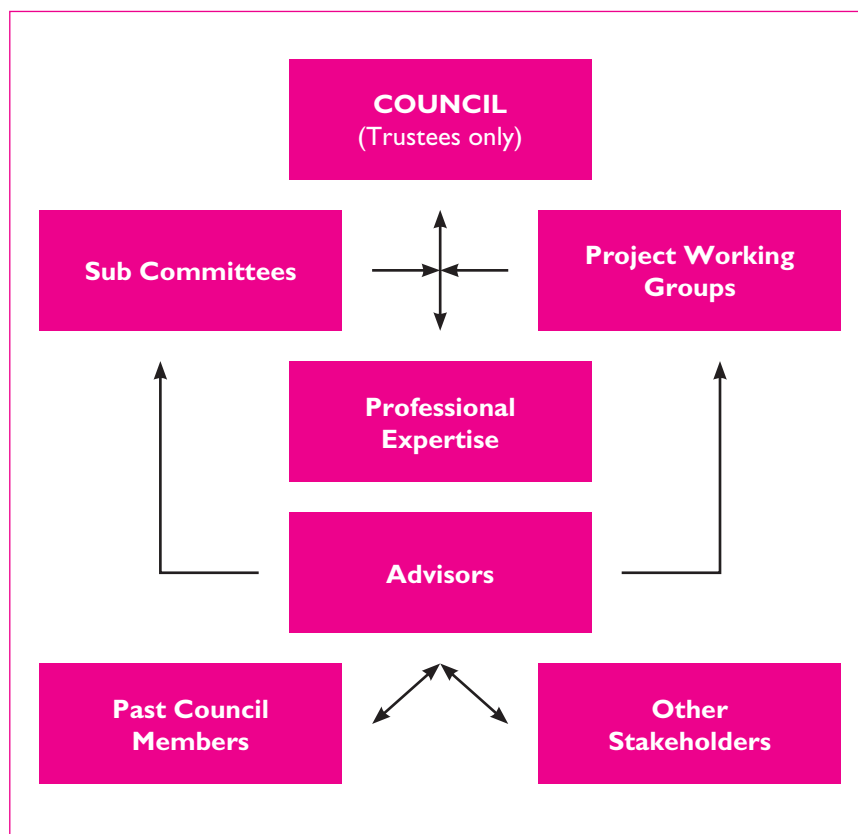
The Training & Education Cornerstone (formerly known as 'Futures') continues to focus on helping younger people, building on the success of initiatives such as Print Futures, as well as continuing to work with organisations such as the Prince's Trust, BPIF and Unite, and getting involved in new ventures, such as supporting the Shine School Media Awards. With the focus on apprenticeships and involvement in a 'trailblazer' programme, we will develop additional partnerships in 2016 to help inspire more people to join the industry.

# Charity Structure, Governance and Management

The ultimate governing body of The Printing Charity is the Council. The Council has established Regulations, which are reviewed every 3 years. The Council met 6 times in 2015.

A number of sub-committees exist to assist the Council in fulfilling its role. Of these only the Investment Committee has delegated powers.

The day-to-day management of the Charity has been delegated to the Chief Executive & Secretary as laid down in the Charity's Bye-laws.



# Committees

## **Investment Committee**

Jon Wright (Chairman)  
Bill Owen  
Fiona Morris  
Gesa Brinkmann  
Richard Brewster  
Tom Corrigan  
Stephen Gilbert (Retired 31 January 2016)  
Neil Lovell (Interim – Joined 15 February 2016)  
Brigita Ac

## **Premises Committee**

Jon Wright (Chairman)  
Brian Skerritt  
Mike Chesson FRICS (Surveyor to the Fabric)  
Stephen Gilbert (Retired 31 January 2016)  
Neil Lovell (Interim – Joined 15 February 2016)  
Debbie Beck

## **Staff Committee**

Jon Wright (Chairman)  
Steve Sibbald (Deputy Chairman)  
Stephen Gilbert (Retired 31 January 2016)  
Neil Lovell (Interim – Joined 15 February 2016)  
Alan Thorburn



# Council Members and their Biographies

## **Jon Wright FCCA**

*Chairman (Appointed as a Trustee: 2004)*

Jon joined as a Trustee and Honorary Treasurer in 2004, becoming Chairman of the Investment Committee in 2007 and appointed as Chairman of Council in 2013. A qualified accountant with the Association of Chartered Certified Accountants, he joined the Financial Times in 1974 and worked his way up to Acting Finance Director. Since 2003, he has been Finance Director of Pearson Global Real Estate.

## **Steve Sibbald**

*Deputy Chairman (Appointed as a Trustee 2005)*

A Trustee since 2005, appointed as Deputy Chairman of Council in 2013, Steve joined the industry as an apprentice hot metal compositor in 1971. He was a National, Regional and Branch Official of Unite, the GPMU and the NGA for a total of 33 years, where he was responsible for all commercial print, paper and corrugated packaging, as well as publishing in the UK. He also had roles within Uni-Network International, one of the global Trade Union Federations to which Unite is affiliated.

## **Gesa Brinkmann – CPA, ACA**

*Honorary Treasurer (Appointed as a Trustee and Treasurer: October 2012)*

Appointed a Trustee in October 2012 and Treasurer in June 2013, Gesa is a qualified accountant with the Institute of Chartered Accountants of England and Wales. She began her career at KPMG joining Pearson Plc's Financial Reporting team in London in 2005. In 2008 she was appointed Pearson's International Controller EMEA. She left Pearson in late 2012 to join AstraZeneca as the EMEA Financial Controller for their Global Commercial Organisation. In August 2015 she was appointed Finance Director - Deal Finance.

## **Richard Brewster FCA**

*Trustee (Appointed as a Trustee: 2011)*

A Fellow of the Institute of Chartered Accountants, Richard has served as a FTSE 350 Board Director for 31 years. In 2014 he retired as Chairman of Bankers Investment Trust PLC, having previously been Chairman of BlackRock Smaller Companies Trust PLC. Prior to that he was CEO of two listed paper, print and packaging companies, D. S. Smith Plc and Jarvis Porter Plc. He is currently Treasurer of the Worshipful Company of Stationers and Newspaper Makers. He is also a Vice President of the RNIB.

## **Stephanie de Laszlo LL.M**

*Trustee (Appointed as a Trustee: 2007)*

Stephanie has practised in media law, both as a barrister (1 Brick Court) and as a solicitor (Goodman Derrick) and spent 9 years teaching law to broadcast journalists at the London College of Printing (now University of the Arts). For the last 21 years she has been a legal adviser at Associated Newspapers.

## **Gary Cullum**

*Trustee (Appointed as a Trustee: 2011)*

Editor of PJ, the UK news media industry's technology publication, since 1993 and publisher since 1996 via his Company, Cullum Publishing Ltd, Gary also co-owns Newspaper Awards Ltd, the news sector's annual newspaper and news media production awards, now in their 20th year. He is technical advisor to the UK News Media Association and Secretary and Treasurer of the Web Offset Newspaper Association – Advanced Technology Group.

### **Brian Skerritt**

*Trustee (Appointed as a Trustee: 1997)*

A Trustee since 1997, Brian became a member of the Southwood Court Committee in 1989 and its Chairman in 2002. Nowadays, Brian continues to Chair the Southwood Court meetings. Brian started work aged 13 with the Evening News. He set up his own business, Metro Post Print Services, in the 1970's part of which was sold to John Menzies in 1989. He remains active within Metro.

### **James Povey**

*Trustee (Appointed as a Trustee: 2004)*

James joined as a Trustee in January 2004 and is responsible for overseeing the payment of grants. James is Marketing Director, UK Print for Polestar. He has worked in the printing industry for over 20 years in various sales and marketing roles.

### **Raffiq Moosa**

*Trustee (Appointed as a Trustee: 2014)*

Raffiq was appointed as a Trustee in 2014. He has spent most of his working life in the printing industry, joining Multi Packaging Solutions in 1997. From early in his career he has been active in his Chapel and Trade Union and has been the Imperial FOC for his site for over 16 years. He is also the Branch Secretary of the GPM LE19, member of the Unite GPM & IT National Committee, and involved in various Leicester-based community groups.

### **Alan Thorburn**

*Trustee (Re-appointed as a Trustee: 2015)*

Alan re-joined the Charity in 2015, having previously served as a Trustee from 2011 to 2014. Alan is an HR specialist who held senior roles in the Newspaper printing industry for 14 years, including the building up of Trinity Mirror Printing Ltd, which became one of the UK's largest printers. Originally from an Automotive and Aerospace manufacturing background, Alan has previously been a pension trustee and has experience of running apprentice and graduate training programmes, as well as various employee learning and NVQ schemes. He is currently a Director of an independent HR consultancy, advising companies on HR and Employee Relations matters.

### **Julia Cole**

*Trustee (Appointed as a Trustee: 2015)*

Julia was appointed a Trustee in 2015. She has held senior marketing, training and sales roles within the print industry for a period of 30 years. Julia is currently EMEA marketing manager and Liaison for Dscoop, HP's Graphics user group. Julia's extensive roles have included managing the inside sales channels and marketing team for HP's broad portfolio in Indigo and PWP Press products in the UK and Ireland. Julia has driven numerous initiatives aimed at growing her customers' businesses, as well as communicating the benefits of digital printing to the wider publishing and marketing industry sectors. She also worked extensively with the BPIF to establish the organisation's graduate training programme and previously spent 12 years at Xerox.

# The Printing Charity's Management Team

## **Neil Lovell – Interim Chief Executive & Secretary**

Neil's experience spans the commercial and not-for-profit sectors. His career started in advertising, joining Charles Barker Recruitment on its first graduate training programme in the late 1980s; eventually becoming Regional Director with responsibility for six offices. In 2000 he moved in-house, as Director of Corporate Communication, firstly joining One-2-One/T-Mobile and then RAC plc, where he led the development and delivery of large-scale and complex internal and external communications programmes.

In 2009 Neil moved into the not-for-profit sector, initially as fundraising and external relations director for a children's charity and then as CEO of the Jamie Oliver Food Foundation, where he had responsibility for the flagship Fifteen Chef apprentice programme, Ministry of Food community cooking centres, food education programmes in schools and colleges, and Jamie's global Food Revolution Day. Neil is a Trustee of the Further Education Trust for Leadership, a grant awarding, education 'think tank' supporting innovation within the FE and skills sector.

## **Brigita Ac – Finance Manager**

Brigita is an Associate Chartered Management Accountant (ACMA) and a Chartered Global Management Accountant (CGMA). She joined the Charity in 2006 after holding various finance positions in not-for-profit and corporate environments, such as Coca-Cola. She looks after the Charity's finance function and is a member of our Investment Committee.

## **Alison Braganza – Fundraising & Marketing Manager**

Alison has been a member of staff since 2005. She holds a BSc Hons in Psychology, a Diploma in Charity Management and is a MInstF (Cert), Fundraising. Her background is a mixture of Marketing, Public Relations and Human Resources at BAA Plc, Virgin Atlantic Airways and Canon (UK) Ltd. Apart from being in charge of the fundraising and marketing functions, Alison is also responsible for the organisation and running of the Charity's events.

## **Dr Mark Johnson – Helps & Futures Manager**

Mark joined the Charity in 2015. After 6 years working in a variety of posts for the John Lewis Partnership, Mark spent some 20 years in the not-for-profit sector in management and leadership positions and in self-employment, providing training, development and support for a number of organisations. Alongside this, he studied at, and then worked with, the University of St Andrews, firstly in writing his Ph.D., looking at the relationship between Theology, the Arts and the power of the imagination, before progressing to supporting postgraduate students engaged in exploring the place of theology in the contemporary world.

## **Caryn Vining – Assistant Secretary**

Caryn joined the Charity in 2014 and works closely with the Chief Executive & Secretary and our Board of Trustees. One of the areas her remit covers is Corporate Governance, ensuring the Charity complies with its statutory and regulatory responsibilities. Other areas include Committee Administration, HR and Risk Management. Caryn has spent most of her time working in office-based roles for large Corporates, including Virgin Atlantic Airways, Mercedes-Benz and Deloitte's. Prior to joining the Charity, she worked for the National Federation of Builders, a trade federation for SMEs in the construction industry.

## **Debbie Beck – Homes & Central Services Manager**

Debbie joined the Charity in 2014. A Chartered Manager (CMgr) and member of the Chartered Management Institute (MCMI) with change management and project management experience, Debbie has worked at a strategic level in the public sector. She has responsibility for the management and leadership of our Homes Cornerstone and Central Services functions, including Health and Safety, Business Continuity and IT.

# Charity Policies

## FINANCIAL DELEGATION POLICY

The Council (Trustees) will approve an annual plan and budget in accordance with the approved timescale. The plan shall contain the staff required and the budget, which is the financial expression of the resources required.

Where day to day change is deemed appropriate by the Chief Executive & Secretary, s/he is able to implement such changes without referral to the Council, provided that they do not materially alter the level of service provided, its quality, the approved staff level or the expenditure required, either in part or full year terms, excluding items reserved for the Council. The Chief Executive & Secretary has the power to *vire monies* across the Charity's operations in meeting the Charity's Objects.

## GRANT MAKING POLICY

The Charity's primary form of grant-making is to individuals who meet their criteria. Grants, be they regular support or one-off, are made to relieve and prevent poverty and assist those who are aged or distressed (as defined in Trustees of Mary Clark Home v Anderson [1904] 2KB 645). Regular Financial Assistance (RFA) is also provided and assessed bi-annually. The Printing Charity is under no obligation to continue with the RFA payments further than the initial six-month period specified. Further, the Charity also contributes to those wishing to start, or develop, in the industry via supporting apprenticeships or through further education.

The level of payment is judged against criteria set out in the Charity's Regulations. The criteria, policy and procedure are monitored annually to ensure that they meet The Printing Charity's objectives.

The Charity also makes grants to organisations, where the Council (Trustees) are satisfied that the receiving charity will be able to identify individuals who meet the criteria required under The Printing Charity's Objects. The grant recipients and the work of the receiving Charity must also 'dovetail' with The Printing Charity's strategic aims.

As part of the process a working agreement is established between the two charities based on guidance from NCVO. This includes monitoring, auditing and reporting on how the money is used by the recipient charity.

## INVESTMENT POLICY

This policy has been prepared in the light of the Trustee Act 2000 and the Statement of Recommended Practice (SORP FRS 102) Accounting and Reporting by Charities.

The Printing Charity depends largely on income from its investments to carry on its charitable activities. Capital and income growth, which over the long-term will endeavour to maintain at least the real value of the portfolio's assets, relative to prevailing economic conditions. There are no specific restrictions, other than the limitations imposed by The Printing Charity's existing Charter, that the investments should be suitable for Trusts. No further limits by way of ethical investment are mandated.

The Investment Managers have a target total return (net of their fees) of 6.5 per cent average per annum made up of income and capital growth. In line with the objective of maintaining the real value of the underlying assets, The Printing Charity has determined that of the return, 3 per cent will be left in the fund and 3.5 per cent spent on service delivery. This objective will be reviewed annually.

The Council (Trustees) has agreed that the investment portfolio shall be managed on a discretionary basis by the Fund Managers, Sarasin LLP. The investment objective is achieved by investment in a balanced portfolio with a medium risk profile.

In order to monitor progress, the fund manager provides quarterly total performance reports. The Investment Committee monitors performance and considers from time to time whether there is a need to revise the Investment Policy.

## PUBLIC BENEFIT

The Charity targets assistance at those who the Council (Trustees) believe to be on an income which meets their definition of poverty, as set from time to time, and have limited savings. It assesses an individual's situation by asking applicants for its services to complete a financial questionnaire.

The Charity also seeks to assist people who are vulnerable due to age, infirmity or other circumstances which put them at a disadvantage in our society. It assesses an individual's situation by asking applicants to complete a questionnaire about their personal circumstances. Trustees review annually against Charity Commission guidance.

## RECRUITMENT, INDUCTION AND TRAINING OF TRUSTEES

The Charity has a policy of drawing its Trustees predominantly from the industry it serves. It is looking to widen the industries represented on its Council, subject to the individuals having the appropriate skills and time to function as an effective Board of Trustees. Council fulfil their objective by drawing on their personal network within the industry. Council members may initially be co-opted and are subject to election at the next AGM. One third of Council members retire at each AGM and are eligible for re-election.

New Trustees receive an induction pack based on ICSA guidance. This is supported by a meeting with the Chief Executive & Secretary to discuss relevant issues prior to attending their first Council meeting. The Trustee has another meeting with the Chief Executive & Secretary approximately three months after appointment to discuss any issues that may have arisen.

Trustees receive details of relevant training courses from time to time. The policy is reviewed annually.

## RESERVES POLICY

There are four possible types of funds (unrestricted; unrestricted designated funds; restricted funds and endowment funds). The Charity currently has three types of funds. They are unrestricted, restricted and endowment funds. Unrestricted funds can be spent at the Trustees' discretion within the powers given under the Royal Charter. The current restricted funds represent a donation from the John Crosfield Foundation and will be expended on Print Futures in 2016. The endowment funds are assets subsumed under Order of Charity Commission from Caxton Convalescent Home and the Association of Printers' Trust.

The level of reserves is assessed annually on a risk management basis, which indicates that unrestricted reserves would stand at approximately £12 million. As the Charity takes on more commitments and work, so the level of Reserves required under the Risk Assessment will rise from their current figure.

The Trustees are mindful of The Charity Commission's guidance, which states that donations should not just be built up on reserves until they become a *de facto* endowment fund. The Commission's view is that this is unacceptable and not in accordance with the donor's wishes nor does it meet the Commission's public benefit test. Post year end a proposal will be submitted to Council to update our Reserves Policy to incorporate the creation of a designated fund for our homes and their maintenance.

## REMUNERATION

The Charity has adopted the policy of paying the living wage as a minimum. This is taken into account when the Staff Committee meet, in October of each year, to review all staff salaries. The living wage applicable at the time establishes the minimum wage/salary that the Charity pays its staff.

Staff salaries are reviewed against appropriate benchmarks on a regular basis. This includes benchmarking for key management personnel, currently defined as the Chief Executive & Secretary and direct reports.

## RISK MANAGEMENT

The Trustees have completed an assessment of the major risks to which the Charity is exposed, in particular those related to the operations, finances and reputation of The Printing Charity, and are satisfied that systems are in place to mitigate our exposure to the risks

Risk Management also appears on sub-committee and senior management agendas as a regular item. This cascading approach is designed to manage the risk as effectively as possible. Risk Management is a standing agenda item for Council Meetings. The risk management assessment is reviewed half yearly by Council (Trustees).

## SUPPLIER PAYMENTS POLICY

The Printing Charity does not impose standard payment terms on its suppliers, but agrees specific terms with each supplier and then pays in accordance with this agreement.

## AUDITOR

RSM UK Audit LLP have indicated their willingness to continue in office.

Trustees approved the Annual Report and Accounts on

28.4.2016.....

Signature:



Chairman

Date: 28.4.2016.....

# Statement of the Trustees' Responsibilities in respect of the Financial Statements

**The Trustees are responsible for preparing the Trustees' Report and the financial statements in accordance with applicable law and United Kingdom Accounting Standards (United Kingdom Generally Accepted Accounting Practice).**

The law applicable to charities in England and Wales requires the Trustees to prepare financial statements for each financial year, which give a true and fair view of the state of affairs of the Charity and of the incoming resources and application of resources of the Charity for that period. In preparing these financial statements, the Trustees are required to:

- select suitable accounting policies and then apply them consistently;
- observe the methods and principles in the Charities SORP FRS 102;
- make judgments and estimates that are reasonable and prudent;
- state whether applicable accounting standards have been followed, subject to any material departures disclosed and explained in the financial statements; and
- prepare the financial statements on the going concern basis unless it is inappropriate to presume that the Charity will continue in business.

The Trustees are responsible for keeping proper accounting records that disclose with reasonable accuracy at any time the financial position of the Charity and enable them to ensure that the financial statements comply with the Charities Act 2011, the Charity (Accounts and Reports) Regulations 2008 and the provisions of the Supplemental Royal Charter 2014 with Associated Bye-laws 2014. They are also responsible for safeguarding the assets of the Charity and hence for taking reasonable steps for the prevention and detection of fraud and other irregularities.

The Trustees are responsible for the maintenance and integrity of the Charity and financial information included on the Charity's website. Legislation in the United Kingdom governing the preparation and dissemination of financial statements may differ from legislation in other jurisdictions.



# Independent Auditor's Report to the Council of The Printing Charity

We have audited the financial statements of The Printing Charity for the year ended 31 December 2015 on pages 32 to 47. The financial reporting framework that has been applied in their preparation is applicable law and United Kingdom Accounting Standards (United Kingdom Generally Accepted Accounting Practice), including FRS 102 "The Financial Reporting Standard applicable in the UK and Republic of Ireland".

This report is made solely to the Charity's Trustees as a body, in accordance with the Charities Act 2011. Our audit work has been undertaken so that we might state to the Charity's Trustees those matters we are required to state to them in an auditor's report and for no other purpose. To the fullest extent permitted by law, we do not accept or assume responsibility to anyone other than the Charity and the Charity's Trustees as a body, for our audit work, for this report, or for the opinions we have formed.

## Respective Responsibilities of Trustees and Auditor

As explained more fully in the Statement of Trustees' responsibilities set out on page 30, the Trustees are responsible for the preparation of the financial statements and for being satisfied that they give a true and fair view.

We have been appointed as auditors under section 144 of the Charities Act 2011 and report in accordance with regulations made under section 154 of that Act. Our responsibility is to audit and express an opinion on the financial statements in accordance with applicable law and International Standards on Auditing (UK and Ireland). Those standards require us to comply with the Auditing Practices Board's (APB's) Ethical Standards for Auditors.

## Scope of the Audit of the Financial Statements

A description of the scope of an audit of financial statements is provided on the Financial Reporting Council's website at <http://www.frc.org.uk/auditscopeukprivate>.

## Opinion on Financial Statements

In our opinion the financial statements:

- give a true and fair view of the state of the Charity's affairs as at 31 December 2015 and of its incoming resources and application of resources for the year then ended;
- have been properly prepared in accordance with United Kingdom Generally Accepted Accounting Practice; and
- have been prepared in accordance with the requirements of the Charities Act 2011.

## Emphasis of Matter

In forming our opinion, which is not modified, we have considered the disclosure in note 1a concerning the Charity's adoption of the Charities SORP (FRS 102) issued in July 2014, rather than applying the Charities 2005 SORP which has been withdrawn but is still referred to in the extant Charities (Accounts and Reports) Regulations 2008. This departure has been necessary for the financial statements to show a true and fair view in accordance with United Kingdom Generally Accepted Accounting Practice effective for accounting periods beginning on or after 1 January 2015.

## Matters on which we are required to Report by Exception

We have nothing to report in respect of the following matters where the Charities Act 2011 requires us to report to you if, in our opinion:

- the information given in the Trustees' Report is inconsistent in any material respect with the financial statements; or
- the Charity has not kept sufficient accounting records; or
- the financial statements are not in agreement with the accounting records and returns; or
- we have not received all the information and explanations we require for our audit.

RSM UK Audit LLP (formerly Baker Tilly UK Audit LLP)  
Statutory Auditor  
Chartered Accountants  
25 Farringdon Street  
London  
EC4A 4AB

*Baker Tilly UK Audit LLP*

Date 16 May 2016

RSM UK Audit LLP is eligible to act as an auditor in terms of section 1212 of the Companies Act 2006.

# Statement of Financial Activities

for the year ended 31st December 2015

	Note	Unrestricted Funds £	Restricted Funds £	Endowment Funds £	2015 Total £	2014 Total £
<b>Income and endowments from:</b>						
Donations and legacies		24,637	8,991	-	33,628	37,127
Charitable activities:						
Homes						
Sheltered housing	2	499,742	-	-	499,742	482,952
Other trading activities	6	28,184	-	-	28,184	35,528
Investment income	5	1,030,845	-	57,749	1,088,594	1,083,809
Other income	7	6,906	-	-	6,906	33,072
<b>Total income</b>		<b>1,590,314</b>	<b>8,991</b>	<b>57,749</b>	<b>1,657,054</b>	<b>1,672,488</b>
<b>Expenditure on:</b>						
Cost of raising funds:						
Expenditure on raising donations and legacies	9	57,396	-	-	57,396	54,091
Expenditure on other trading activities	6	32,453	-	-	32,453	26,989
Investment management costs	9	179,069	-	6,641	185,710	190,634
Charitable activities:						
Homes						
Sheltered housing	2	567,977	-	-	567,977	544,129
Helps	8	1,127,771	14,784	46,862	1,189,417	917,414
Other costs						
Marketing	9	81,847	-	-	81,847	69,873
Public Relations	9	80,393	-	-	80,393	74,275
<b>Total expenditure</b>		<b>2,126,906</b>	<b>14,784</b>	<b>53,503</b>	<b>2,195,193</b>	<b>1,877,405</b>
Net gains/(losses) on investments		123,948	-	(628)	123,320	527,024
<b>Net Income/Expenditure</b>	10	<b>(412,644)</b>	<b>(5,793)</b>	<b>3,618</b>	<b>(414,819)</b>	<b>322,107</b>
Reconciliation of funds						
Fund balances brought forward at 1 January		35,308,313	11,585	1,436,415	36,756,313	36,434,206
Fund balances carried forward at 31 December		<b>34,895,669</b>	<b>5,792</b>	<b>1,440,033</b>	<b>36,341,494</b>	<b>36,756,313</b>

The outgoing/incoming resources and net movement in funds for the current and prior years relate to continuing activities. All realised gains and losses are included within the Statement of Financial Activities.

# Balance Sheet

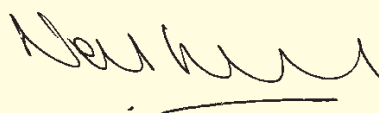
As at 31st December 2015

	Note	Unrestricted Funds £	Restricted Funds £	Endowment Funds £	2015 Total £	2014 Total £
<b>Fixed assets</b>						
Tangible fixed assets	11	4,285,592	-	-	4,285,592	4,418,179
Investments	12	30,102,370	-	1,440,033	31,542,403	31,743,523
		34,387,962	-	1,440,033	35,827,995	36,161,702
<b>Current assets</b>						
Debtors	13	133,559	-	-	133,559	164,159
Cash at bank and in hand		571,101	5,792	-	576,893	646,567
		704,660	5,792	-	710,452	810,726
<b>Current liabilities</b>						
Creditors: amounts falling due within one year	14	(170,867)	-	-	(170,867)	(169,130)
		(170,867)	-	-	(170,867)	(169,130)
<b>Net current assets</b>		533,793	5,792	-	539,585	641,596
<b>Total assets less current liabilities</b>		34,921,755	5,792	1,440,033	36,367,580	36,803,298
<b>Long term liabilities</b>						
Provisions for liabilities	17	(26,086)	-	-	(26,086)	(46,985)
<b>Net assets</b>		34,895,669	5,792	1,440,033	36,341,494	36,756,313
<b>The funds of the charity</b>						
Endowment funds	16	-	-	1,440,033	1,440,033	1,436,415
Restricted funds	16	-	5,792	-	5,792	11,585
Unrestricted funds	16	34,895,669	-	-	34,895,669	35,308,313
		34,895,669	5,792	1,440,033	36,341,494	36,756,313

These financial statements were approved by the Council of The Printing Charity on 28 April 2016 and signed and authorised for issue on its behalf by:



Jon Wright FCCA  
Chairman



Neil Lovell  
Interim Chief Executive & Secretary

# Statement of Cash Flows

for the year ended 31st December 2015

	Note £	2015 £	2014 £
Net cash used in operating activities	<b>20a</b>	<b>(1,476,292)</b>	(1,123,587)
Cash flows from investing activities	<b>20b</b>	<b>1,406,618</b>	988,864
Changes in cash during year	<b>20d</b>	<b>(69,674)</b>	(134,723)

# Notes

## I Accounting Policies

### a) Basis of accounting

The financial statements have been prepared on the historical cost basis as modified by the inclusion of investments at market value.

The financial statements have been prepared in accordance with the Statement of Recommended Practice: Accounting and Reporting by Charities preparing their accounts in accordance with the Financial Reporting Standard applicable in the UK and Republic of Ireland (FRS 102) issued on 16 July 2014 and the Financial Reporting Standard applicable in the United Kingdom and Republic of Ireland (FRS 102) and the Charities Act 2011 and UK Generally Acceptable Practice as it applies from 1 January 2015.

The financial statements of The Printing Charity for the year ended 31 December 2014 were prepared in accordance with the applicable accounting standards in the United Kingdom, the Charities Act 2011 and the Statement of Recommended Practice: Accounting and Reporting by Charities (SORP 2005).

The financial statements have been prepared to give a 'true and fair' view and have departed from the Charities (Accounts and Reports) Regulations 2008 only to extent required to provide a 'true and fair' view. This departure has involved following 'Accounting and Reporting by Charities preparing their accounts in accordance with the Financial Reporting Standard applicable in the UK and Republic of Ireland (FRS 102)' issued on 16 July 2014 rather than 'Accounting and Reporting by Charities: Statement of Recommended Practice' effective from 1 April 2005 which has since been withdrawn. The charity is a public benefit entity.

Some of the Charities SORP FRS 102 recognition, measurement, presentation and disclosure requirements and accounting policy choices differ from Charities SORP 2005. Consequently, the trustees have amended certain accounting policies to comply with Charities SORP FRS 102. The trustees have also taken advantage of certain exemptions from the requirements of Charities SORP FRS 102 permitted by FRS 102 Section 35 'Transition to this FRS'.

### b) Reconciliation with previous Generally Accepted Accounting Practice

In applying the accounting policies required by FRS 102 and the Charities SORP FRS 102 trustees recognised that no restatements were needed. In accordance with the requirements of FRS 102 a reconciliation of opening balances and net income/(expenditure) for the year is provided with the net income/(expenditure) under previous GAAP adjusted for the presentation of investment gains/(losses) as a component of reported income.

#### Reconciliation of reported net income in 2014

Net incoming resources before investment gains/(losses)	(204,917)
Investment gains	527,024

---

Net movement in funds	322,107
-----------------------	---------

### c) Going concern

As detailed in the Trustee's responsibilities statement, the accounts are prepared on a going concern basis unless it is inappropriate to presume that the charity will continue in operation. The Charity's Trustees have approved the Charity's budgets and forecast for 2016 and conclude that the Charity has adequate resources to continue in operational existence for at least twelve months from the date of signing of the financial statements.

### d) Donations and legacies

All voluntary income is recognised once the charity has entitlement to the income, it is probable that the income will be received and the amount can be measured reliably.

### e) Incoming resources from charitable activities

Income from the provision of sheltered housing is accounted for on an accruals basis.

# Notes

continued

## **f) Resources expended**

Expenditure is recognised on an accruals basis as a liability is incurred. Liabilities are recognised as soon as there is a legal or constructive obligation committing the Charity to the expenditure.

Irrecoverable VAT is charged against the category of resources expended from which it was incurred.

Costs of raising funds comprise the costs associated with attracting voluntary income.

Charitable expenditure comprises those costs incurred by the charity in the delivery of its activities and services for its beneficiaries. It includes both costs that can be allocated directly to such activities and those costs of an indirect nature necessary to support them.

Governance costs include those costs associated with the general running of the charity and include the operations of the Council and addressing constitutional, audit and other statutory requirements.

Other costs cover activity which is designed to promote the Charity's work with the intention of achieving the strategic objective of helping more people. Expenditure under this heading has been broken down into marketing of the Charity to funders and beneficiaries, public relations (this is general material and activity relating to cover within the media) together with attendance at industry shows and seminars which reach out to those within the industry.

All costs are allocated between the expenditure categories of the Statement of Financial Activities on a basis designed to reflect the use of the resource. Costs relating to a particular activity are allocated directly, others are apportioned on an appropriate basis.

## **g) Allocation of Support and Governance Costs**

The costs of functions, which support more than one of the charity's activities, have been allocated to those activities based on time spent. Governance cost has been allocated based on a percentage of the cost to the total cost.

## **h) Grants payable**

Grants payable are accounted for on award to the recipient.

## **i) Financial instruments**

The Charity only has financial assets and financial liabilities of a kind that qualify as basic financial instruments and are not considered to be of a financing nature. Such financial instruments, except for investments, are initially recognised at the transaction value and subsequently measured at their settlement value.

## **j) Investments**

Investments are stated at their Bid-market value at 31 December. Realised gains and losses and the change in value of investments held at the year-end are taken to the Statement of Financial Activities. Realised gains and losses represent the difference between net proceeds of sales less the original cost, unrealised gains and losses represent the movement after taking account of sales in the year, in the difference between the market value of securities at the year end and their original cost. Gross income from fixed interest securities is accounted for on a receivable basis. Investment management fees are net of any commission rebate received on the portfolio.

The Charity has chosen to show the income generated on the endowment funds, which are invested separately from the unrestricted funds as income. The income arising is then applied to the Charity's activities as can be seen under resources expended, Helps. The Charity has permission to use the income in this way under the schemes that set up the Association of Printers' Trust and Caxton Convalescent Home. Trustees felt that this was the clearest way to demonstrate to funders and beneficiaries both current and potential how the income from these endowment funds was applied.



#### k) Tangible assets and depreciation

Items of expenditure of a capital nature exceeding a de minimis level of £250 are capitalised and included in fixed assets at cost or valuation at the date of donation. Items of expenditure that are below the de minimis limit are taken directly to the Statement of Financial Activities. Depreciation is calculated on a straight-line basis to write down the cost of the assets over their estimated useful lives at the following rates:

• Freehold Buildings	2% per annum
• Leasehold Improvements	17% per annum (over lease term)
• Fixtures and Fittings - General	10% per annum
• Electrical Equipment	20% per annum
• Computer Equipment	50% per annum

No depreciation is provided on freehold land.

#### l) Foreign currencies

Assets and liabilities denominated in foreign currencies are translated at the rate of exchange ruling at the balance sheet date. Transactions denominated in foreign currencies are converted at the rate of exchange ruling at the date of transaction. All translation differences are taken to the Statement of Financial Activities as they arise.

#### m) Revenue and designated reserves

Generally all donations, realised capital gains and other receipts of a capital nature are added to the revenue reserve, unless required for specific projects. Any income not utilised on charitable expenditure or in meeting the administration and other expenses of the year in which it is earned, is set aside for specific projects.

#### n) Pension costs

The Charity operates a defined contribution group personal pension plan. Pension costs are accounted for on the basis of charging actual costs of providing pensions during the year.

#### o) Operating lease costs

Rentals payable under operating leases are charged in the Statement of Financial Activities on a straight line basis over the lease term.

#### p) Liquid resources

For the purposes of preparing the cash flow statement all short-term deposits with a maturity greater than one day but less than one year are treated as liquid resources.

#### r) Corporation tax

The Printing Charity is a registered charity and as such its income and gains falling within Sections 471 to 489 of the Corporation Tax Act 2010 or Section 256 of Taxation of Chargeable Gains Act 1992 are exempt from corporation tax to the extent that they are applied to its charitable objectives.

#### s) Funds

The Charity holds three types of funds, unrestricted, restricted and endowment. Unrestricted are those which can be spent at the Trustees' discretion within the powers given under the Royal Charter. Restricted funds represents donations for Print Futures. Endowment are the funds subsumed under Order of Charity Commission from Caxton Convalescent Home and the Association of Printers' Trust.

#### t) Provisions for liabilities

The provision for the Butlin House Subsidy is considered to have become binding on the date of completion of the sale. The provision has been calculated based on management's best estimate of the life expectancy of existing residents and is reassessed at each balance sheet date.

# Notes

continued

## 2 Particulars of income and expenditure from lettings

	2015 Unrestricted Funds £	2014 Unrestricted Funds £
<b>Income from lettings</b>		
<b>Sheltered housing</b>		
Rent receivable net of identifiable service charges	<b>494,651</b>	475,019
Service charges receivable	<b>27,097</b>	26,037
	<b>521,748</b>	501,056
Gross rents receivable	<b>521,748</b>	501,056
Less: Rent losses from voids	<b>(22,006)</b>	(18,104)
<b>Total income from lettings</b>	<b>499,742</b>	482,952
<b>Expenditure on letting activities</b>		
<b>Sheltered housing</b>		
Direct cost		
Services	<b>33,999</b>	31,182
Management	<b>225,827</b>	222,484
Routine maintenance	<b>68,447</b>	47,663
Major repairs expenditure	<b>12,930</b>	7,265
Depreciation	<b>131,348</b>	133,077
	<b>472,551</b>	441,671
Support & Governance cost		
Administration	<b>79,221</b>	82,437
Governance	<b>16,205</b>	20,021
	<b>95,426</b>	102,458
<b>Total expenditure on lettings</b>	<b>567,977</b>	544,129
<b>Operating deficit on letting activities</b>	<b>(68,235)</b>	(61,177)

Governance Cost in accordance with SORP FRS 102 is a part of Support Cost, while in the previous year shown as a separate category under SORP 2005.

## 3 Officers' and Directors' emoluments

	2015 Unrestricted Funds £	2014 Unrestricted Funds £
Total expenses reimbursed to officers	<b>5,993</b>	5,585

The officers do not receive any remuneration (including pension contributions) other than reimbursement of expenses, 2015 £Nil (2014: £Nil). Travel expenses were reimbursed to six officers (2014: six officers).

The Charity considers its key management personnel comprise the trustees and the Chief Executive & Secretary. The total employment benefit including employer pension contributions of the key management personnel were £85,507 (2014: £84,227).

The number of employees who received emoluments (excluding pension contributions) in the following range was:

	2015	2014
£70,000 to £79,999	1	1

#### Chief Executive and Secretary's Pension Scheme

The Chief Executive and Secretary is an ordinary member of the group personal pension plan and does not receive any enhanced benefits or special terms.

#### 4 Employees

	2015	2014
<b>Average weekly number of persons (including part-time employees) employed during the year:</b>	No.	No.
Sheltered accommodation	11.0	11.1
Head Office	10.9	9.8
	<b>21.9</b>	<b>20.8</b>

#### The average number of employees expressed in full-time equivalents:

Sheltered accommodation	5.8	5.8
Head Office	10.0	9.0
	<b>15.8</b>	<b>14.8</b>

#### Staff costs (for the above persons and the Director)

	£	£
Wages and salaries	436,577	405,323
Social Security costs	31,793	28,837
Other pension costs	43,964	34,279
Agency staff	580	3,923
	<b>512,914</b>	<b>472,362</b>

Wages and Salaries includes ex-gratia payment of £6,330 (2014:£Nil).

#### 5 Investment income

	Unrestricted Funds	Endowment Funds	2015 Total
	£	£	£
<b>2015</b>			
Investment income - listed	822,545	46,837	869,382
Bank interest receivable	635	-	635
Rebate from Investment Managers	207,665	10,912	218,577
<b>Total Investment Income 2015</b>	<b>1,030,845</b>	<b>57,749</b>	<b>1,088,594</b>
2014			
Investment income - listed	822,649	46,470	869,119
Bank interest receivable	1,132	-	1,132
Rebate from Investment Managers	203,010	10,548	213,558
<b>Total Investment Income 2014</b>	<b>1,026,791</b>	<b>57,018</b>	<b>1,083,809</b>

The Charity's Investment Managers rebate the fees they charge on the Common Investment Funds (CIF) they manage so that the Charity is not charged twice.

# Notes

continued

## 6 Other trading activities

			2015	2014
	Income	Expenditure	Unrestricted	Unrestricted
	£	£	Surplus/(Deficit)	Surplus
			£	£
Annual Printing Charity Luncheon	18,655	17,957	698	2,017
Other Events	9,529	14,496	(4,967)	6,522
	<b>28,184</b>	<b>32,453</b>	<b>(4,269)</b>	<b>8,539</b>

## 7 Other Income

Other income includes a compensation of £6,376 received by the Charity as a compensation for not receiving the right amount in 1987 at the time of the distribution of a trust fund.

## 8 Helps: Analysis of grants

During the course of the year a variety of grants were made to 548 (2014: 505) individuals directly by the charity. Further grants were distributed to 335 individuals (2014: 74) through our projects by working together with other organisations. The Charity also made 4 (2014: 2) grants to institutions were further 165 (2014: 9) individuals have benefited indirectly. The cost of these grants and the administration thereof, are as follows:

2015	Unrestricted Funds	Restricted Funds	Endowment Funds	2015 Total
	£	£	£	£
<b>Grants to individuals</b>				
Regular financial assistance	487,813	-	46,862	534,675
Nursing home grants	714	-	-	714
One-off grants	177,092	-	-	177,092
Print Futures - Educational Bursaries	53,807	14,784	-	68,591
The Prince's Trust	39,392	-	-	39,392
Support Unemployment	59,884	-	-	59,884
Rory Peck Trust	30,000	-	-	30,000
	848,702	14,784	46,862	910,348
<b>Grants to institutions</b>				
Future proposals	26,605	-	-	26,605
	26,605	-	-	26,605
<b>Support Cost</b>				
Administration costs	218,528	-	-	218,528
Governance costs	33,936	-	-	33,936
	252,464	-	-	252,464
	<b>1,127,771</b>	<b>14,784</b>	<b>46,862</b>	<b>1,189,417</b>

	Unrestricted Funds £	Restricted Funds £	Endowment Funds £	2014 Total £
2014				
Grants to individuals				
Regular financial assistance	285,702	-	46,561	332,263
Nursing home grants	32,172	-	-	32,172
One-off grants	202,109	-	-	202,109
Print Futures - Educational Bursaries	31,641	14,293	-	45,934
The Prince's Trust	31,391	-	-	31,391
Support Unemployment	10,265	-	-	10,265
Rory Peck Trust	20,000	-	-	20,000
	613,280	14,293	46,561	674,134
Grants to institutions				
Future proposals	3,000	-	-	3,000
	3,000	-	-	3,000
Support Cost				
Administration costs	221,996	-	-	221,996
Governance costs	18,284	-	-	18,284
	240,280	-	-	240,280
	856,560	14,293	46,561	917,414

In 2015 nursing home grants of £16,343 has been reduced by £15,629, the adjustment on the Provision for Butlin House, to £714.

## 9 Analysis of expenditure

	Direct Costs £	Support Costs £	Governance Costs £	2015 Total £	2014 Total £
Cost of raising funds					
Cost of raising donations and legacies	26,229	28,604	2,563	<b>57,396</b>	54,091
Cost of other trading activities	32,453	-	-	<b>32,453</b>	26,989
Investments Manager costs	147,533	32,878	5,299	<b>185,710</b>	190,634
Charitable activities					
Sheltered housing	472,551	79,221	16,205	<b>567,977</b>	544,129
Helps	1,009,494	145,987	33,936	<b>1,189,417</b>	917,414
Other Costs					
Marketing	35,385	44,127	2,335	<b>81,847</b>	69,873
Public Relations	58,629	19,470	2,294	<b>80,393</b>	74,275
<b>Total</b>	<b>1,782,274</b>	<b>350,287</b>	<b>62,632</b>	<b>2,195,193</b>	1,877,405

Support cost of £350,287 (2014: £395,357) have been allocated across activities. These include costs associated with finance, payroll, providing management, property, IT and other central services. Costs have been allocated based on time spent by the Directorate supporting the various activities. These also include Governance cost of £62,632 (2014: £48,323) that has been allocated across activities in respect of the percentage of the cost to the total charities expenditure.

# Notes

continued

## 10 Net movement in funds for the year

Net movement in funds for the year is stated after charging:	Unrestricted Funds £	Endowment Funds £	2015 Total £	2014 Total £
Depreciation on tangible fixed assets	137,611	-	<b>137,611</b>	142,555
Auditor's Remuneration (inc.VAT) - RSM (formely Baker Tilly UK Audit LLP)	22,500	-	<b>22,500</b>	16,200
Operating lease charges - buildings	25,125	-	<b>25,125</b>	25,125

## 11 Fixed Assets

Tangible fixed assets	Leasehold Improvements 17% £	Freehold buildings 2% £	10% £	Fixtures and Fittings 20% £	50% £	Unrestricted Funds Total £
<b>Cost</b>						
At 1st January	65,545	6,142,514	137,179	74,294	9,751	6,429,283
Additions	-	-	-	-	5,169	5,169
Disposals	-	-	(729)	-	-	(729)
At 31st December	<b>65,545</b>	<b>6,142,514</b>	<b>136,450</b>	<b>74,294</b>	<b>14,920</b>	<b>6,433,723</b>
<b>Depreciation</b>						
At 1st January	65,545	1,768,397	99,488	68,680	8,994	2,011,104
Charge for year	-	122,527	7,100	4,643	3,341	137,611
Disposals	-	-	(584)	-	-	(584)
At 31st December	<b>65,545</b>	<b>1,890,924</b>	<b>106,004</b>	<b>73,323</b>	<b>12,335</b>	<b>2,148,131</b>
<b>Net book value</b>						
At 31st December 2015	-	<b>4,251,590</b>	<b>30,446</b>	<b>971</b>	<b>2,585</b>	<b>4,285,592</b>
At 31st December 2014	-	4,374,117	37,691	5,614	757	4,418,179
					<b>2015</b>	2014
					<b>£</b>	<b>£</b>
<b>Insurance value of freehold buildings</b>					<b>15,864,767</b>	15,707,827



## 12 Investments at market value

	Unrestricted Funds £	Endowment Funds £	Total £
<b>Listed Securities</b>			
As at 1st January 2015	30,161,512	1,434,406	31,595,918
Additions	9,676,825	-	9,676,825
Disposal proceeds	(10,111,782)	-	(10,111,782)
Unrealised and realised gains	92,820	(628)	92,192
<b>As at 31st December 2015</b>	<b>29,819,375</b>	<b>1,433,778</b>	<b>31,253,153</b>
As at 31st December 2014	30,161,512	1,434,406	31,595,918
<b>Deposits</b>			
As at 1st January 2015	£ 145,596	£ 2,009	£ 147,605
Net additions/(disposals)	106,271	4,246	110,517
Unrealised and realised gains	31,128	-	31,128
<b>As at 31st December 2015</b>	<b>282,995</b>	<b>6,255</b>	<b>289,250</b>
As at 31st December 2014	145,596	2,009	147,605
<b>Total</b>			
As at 1st January 2015	Listed Securities £ 31,595,918	Deposits £ 147,605	Total £ 31,743,523
Additions	9,676,825	4,246	9,681,071
Disposal proceeds	(10,111,782)	106,271	(10,005,511)
Unrealised and realised gains	92,192	31,128	123,320
<b>As at 31st December 2015</b>	<b>31,253,153</b>	<b>289,250</b>	<b>31,542,403</b>
As at 31st December 2014	31,595,918	147,602	31,743,520
<b>(a) Market value</b>			
Listed on London stock exchange	Unrestricted Funds £ 29,819,375	Endowment Funds £ 1,433,778	Total £ 31,253,153
Deposits with investment managers	282,995	6,255	289,250
<b>As at 31st December 2015</b>	<b>30,102,370</b>	<b>1,440,033</b>	<b>31,542,403</b>
Listed on London stock exchange	30,161,512	1,434,406	31,595,918
Deposits with investment managers	145,596	2,009	147,605
As at 31st December 2014	30,307,108	1,436,415	31,743,523

# Notes

continued

	Unrestricted Funds £	Endowment Funds £	Total £
<b>(b) At cost value at date of donation</b>			
Listed on London stock exchange	27,791,873	1,212,136	29,004,009
Deposits with investment managers	282,995	6,255	289,250
<b>As at 31st December 2015</b>	<b>28,074,868</b>	<b>1,218,391</b>	<b>29,293,259</b>
Listed on London stock exchange	26,456,462	1,212,136	27,668,598
Deposits with investment managers	145,596	2,009	147,605
As at 31st December 2014	26,602,058	1,214,145	27,816,203

	2015 Total £	2014 Total £
<b>(c) Holdings constituting more than 10% of total investments value</b>		
Sarasin Charity Thematic UK Fund	<b>7,136,023</b>	7,378,057
Sarasin Global Higher Dividend Hedged Fund	<b>6,444,852</b>	1,033,507
Sarasin Equisar Global Thematic Fund	<b>3,778,933</b>	4,536,973
Sarasin Sterling Bond	<b>3,617,637</b>	2,981,741
Sarasin Equisar Global Thematic Hedged	<b>2,190,196</b>	6,177,925

<b>13 Debtors</b>	2015 Total £	2014 Total £
Rents and service charges	<b>4,612</b>	6,474
Loans to beneficiaries (secured)	<b>52,125</b>	52,125
Other debtors	<b>3,212</b>	1,660
Prepayments	<b>16,019</b>	47,616
Accrued income	<b>57,591</b>	56,284
	<b>133,559</b>	164,159

Loans to beneficiaries have no fixed terms of repayment and, therefore, might not be recovered within one year.

Prepayments in 2014 included £31,534, which remained with The Prince's Trust and spent in 2015 for an ongoing partnership to help to change young people's life.

<b>14 Creditors</b>	2015 Total £	2014 Total £
<b>Amounts falling due within one year</b>		
Rent received in advance	<b>1,956</b>	2,525
Taxation and social security	<b>10,662</b>	9,356
Other creditors	<b>45,138</b>	29,993
Accrued expenditure	<b>101,768</b>	95,970
Provision for Butlin House subsidy (note 17)	<b>11,343</b>	31,286
	<b>170,867</b>	169,130

## 15 Operating leases

At 31st December 2015 the Charity was committed to making the following minimum payments under non-cancellable operating leases for rent of premises, which expires on 26 September 2018.

	<b>2015</b>	<b>2014</b>
Within one year	<b>25,125</b>	25,125
Within two to five years	<b>50,250</b>	75,375
<b>Total</b>	<b>75,375</b>	100,500

## 16 Reserves

The reserves shown below are set aside for the following purposes:

### Revenue Reserve

Funds that are available to be expended in accordance with the aims and objectives of the charity.

Unrestricted Funds	Balance	Outgoing resources	Gains	Balance
	31 December 2014			31 December 2015
	£	£	£	£
Revenue Reserve	35,308,313	(536,592)	123,948	<b>34,895,669</b>
	35,308,313	(536,592)	123,948	<b>34,895,669</b>
Restricted Funds	Balance	Outgoing resources	Gains	Balance
	31 December 2014			31 December 2015
	£	£	£	£
Print Future	11,585	(5,793)	-	<b>5,792</b>

Following the decision to wind up The John Crosfield Foundation in 2013, its Trustees have donated their remaining funds to the Charity to expand our Print Future Awards.

Endowment Funds	Balance	Incoming resources	Gains	Balance
	31 December 2014			31 December 2015
	£	£	£	£
<b>Association of Printers' Trusts</b>				
Revenue Reserve	1,111,805	3,286	(486)	<b>1,114,605</b>
<b>Caxton Convalescent Home</b>				
Revenue Reserve	324,610	960	(142)	<b>325,428</b>
	1,436,415	4,246	(628)	<b>1,440,033</b>

Association of Printers' Trust was created by way of a Charity Commission Scheme in 1992 as a subsidiary charity of the Printers' Charitable Corporation bringing together 24 charities. In 1974 the Charity Commission vested the administration of Caxton Convalescent Home in the Printers' Charitable Corporation. In 2010 the Charity Commission agreed to a further scheme, which subsumed both of these Trusts into The Printing Charity as permanent endowment funds.

# Notes

continued

## 17 Provision

Under the terms of the sale for Butlin House, print related residents will receive a nursing home financial subsidy whilst resident at Butlin House. It has been estimated that this subsidy will continue for five years and the provision represents the full estimated cost of the commitment. The provision will be reviewed annually.

	Balance 31 December 2014	Provision adjustment	Amounts used in period	Balance 31 December 2015
	£	£	£	£
Butlin House Subsidy	78,271	(15,629)	(25,214)	<b>37,428</b>

The provision of £37,428 (2014: £78,271) includes £11,343 (2014: £31,286) falling due within one year and £26,086 (2014: £46,985) due in greater than one year.

## 18 Capital Commitments

At 31 December 2015 there were no capital expenditure commitments (2014: £Nil).

## 19 Pension Scheme

From February 1995 the Charity has contributed to a defined contribution pension scheme, which is a group personal pension plan managed by Aegon. The pension cost charge represents contributions payable by The Printing Charity to the plan and amounted to £43,964 (2014: £34,279).

## 20 Notes to the cash flow statement

	2015 £	2014 £
<b>a) Net cash used in operating activities</b>		
Net (Expenditure)/Income for the reporting period	<b>(414,819)</b>	322,107
Adjustment for:		
Depreciation charges	<b>137,611</b>	142,555
(Gains) on investments	<b>(123,320)</b>	(527,024)
Loss on sale of fixed assets	<b>85</b>	-
Decrease in other debtors	<b>31,907</b>	25,400
Decrease in creditors	<b>(19,162)</b>	(2,816)
Dividends, interest from investments	<b>(1,088,594)</b>	(1,083,809)
<b>Net cash used in operating activities</b>	<b>(1,476,292)</b>	(1,123,587)
<b>b) Cash flows from investing activities</b>		
Dividends, interest from investments	<b>1,087,287</b>	1,049,810
Proceeds from the sale of property, plant and equipment	<b>60</b>	-
Purchase of property, plant and equipment	<b>(5,169)</b>	(4,265)
Proceeds from sale of investments	<b>10,005,511</b>	3,907,877
Purchase of investments	<b>(9,681,071)</b>	(3,964,558)
<b>Net cash flows from investing activities</b>	<b>1,406,618</b>	988,864

<b>c) Change in cash during year</b>	<b>2015</b>	<b>2014</b>
	£	£
Change in cash and cash equivalents	<b>(69,674)</b>	(134,723)
Cash and cash equivalents at 1st January	<b>646,567</b>	781,290
Cash and cash equivalents at 31st December	<b>576,893</b>	646,567

## **21 Legislative status**

The Printing Charity is registered with the Charity Commission in England and Wales, registered charity number: 208882.

# Past Presidents – 1828 - 2015

1828	Lord John Russell MP	1894	The Lord Mayor (GR Tyler Bt)	1954	Charles H Crabtree Esq.
1830	Viscount Morpeth MP	1895	HRH The Prince of Wales	1955	Victor E Walker Esq.
1831	The Lord Mayor (Sir John Key Bt)	1896	The Archbishop of Canterbury (Edward White Benson)	1956	Lord McCorquodale of Newton
1832	Viscount Mahon MP	1897	The Lord Mayor (Sir George Faudel-Phillips Bt GCSI)	1957	Brigadier Sir George Harvie-Watt
1833	Sir Edward Lytton Bulwer Bt MP	1898	GA Spottiswoode (Trustee)	1958	Colonel Sir James Waterlow Bt MBE TD
1835	The Lord Mayor (H Winchester Esq.)	1899	Lord Russell of Killowen GCMG	1959	Angus Kennedy Esq. MC CA
1836	Earl Stanhope	1900	Cecil B Harmsworth Esq.	1960	Sir Guy Harrison
1837	Sir Lancelot Shadwell	1901	G F McCorquodale Esq. (Trustee)	1961	Roy Thomson Esq.
1838	Viscount Sandon MP	1902	Lord Glenesk	1962	Sir Oliver Crosthwaite-Eyre DL MP
1839	The Earl of Durham	1903	W Hugh Spottiswoode Esq. (Trustee)	1963	HRH The Duke of Edinburgh KG KT
1840	HRH The Duke of Cambridge	1904	The Hon JH Choate United States Ambassador	1964	Sir William E Butlin MBE
1841	Sir J Easthope B MP	1905	Sir C Arthur Pearson Bt	1965	Cecil H King Esq.
1842	Richard Taylor Esq. FLS	1906	Franklin Thomasson Esq. MP	1966	Sir Christopher Chancellor CMB
1843	Charles Dickens Esq.	1907	Lord Northcliffe	1967	David Ducat Esq.
1844	Lord Robert Grosvenor	1908	The Hon WF Danvers-Smith M.P. (Second Time)	1968	Sir Max Aitken DSO DFC
1845	The Right Hon Benjamin Disraeli MP	1909	HRH The Prince of Wales KG	1969	HRH The Duke of Kent GCMG GCVO
1846	Lord Dudley C Stewart MP	1910	Sir G Wyatt Truscott Bt	1970	Lord Hartwell MBE TD MA
1847	Luke J Hansard Esq.	1911	The Lord Mayor (Sir T Vezey Strong KCVO)	1971	Sir Eric Clayson FCA
1848	The Marquis of Northampton	1912	Sir Horace B Marshall MA LLD JP	1972	Lord Buckton
1849	J A Roebuck Esq.	1913	Jon Walter Esq.	1973	Lord Goodman CH
1850	Frederick Peel Esq. MP	1914	The Lord Mayor (Sir T Vansittart Bowater Bt)	1974	Eric W Cheadle CBE
1851	William Ewart Esq. MP	1915	Alfred F Blades Esq.	1975	The Hon Vere Harmsworth
1852	Douglas Jarrold Esq.	1916	Kennedy Jones Esq. MP	1976	Lord Feather/The Hon Vere Harmsworth
1853	Viscount Mahon MP	1917	Capt Sir G Rowland Blades MP	1977	HRH The Prince of Wales
1854	AH Layhard Esq.	1918	Sir George A Riddell Bt	1978	Sir William Butlin (second time)
1855	The Lord Mayor (Sir FG Moon Bt)	1919	Major The Hon Waldorf Astor MP	1979	Lord Delfont
1856	Sir Roderick I Murchison DCL	1920	HRH The Prince of Wales KG	1980	Dame Vera Lynn OBE LLD
1857	The Duke of Wellington	1921	Sir William A Waterlow KBE	1981	HRH The Duchess of Kent GCVO
1858	HRH The Duke of Cambridge	1922	HRH The Duke of York KG	1982	Lord Matthews
1859	The Earl of Shrewsbury and Talbot	1923	Sir William E Berry BT	1983	Gordon C Brunton Esq.
1860	Tom Taylor Esq.	1924	Major The Hon JJ Astor MP	1984	HRH Princess Alexandra GCVO
1861	Thomas Chandler-Haliburton Esq. MP	1925	Sir Herbert Morgan KBE	1985	Rupert Murdoch Esq.
1862	Lord Stanley	1926	Viscount Bumpham CH	1986	The Duke of Atholl
1863	Viscount Enfield MP	1927	HRH The Prince Henry KG	1987	Peter W Gibbings Esq.
1864	Charles Dickens Esq. (second time)	1928	Sir George Berry Bt	1988	The Earl of Stockton
1865	The Rt Hon WE Gladstone MP	1929	HRH The Duke of Gloucester KG	1989	HRH The Princess of Wales
1866	The Hon Arthur Kinnaird MP	1930	CH St John Homby Esq.	1990	The Rt Hon Sir Geoffrey Howe QC MP
1867	Earl Russell KG (second time)	1931	HRH Prince George KG	1991	Eric Tanzer Esq.
1868	Dr Stanley, Dean of Westminster	1932	W Lints Smith Esq.	1992	Victor H Watson CBE DL
1869	Viscount Goschen	1933	Lord Iliffe CBE	1993	Harry Roche Esq.
1870	The Lord Mayor (Robert Beasley)	1934	JS Elias Esq.	1994	Frank Barlow CBE
1871	Earl Stanhope	1935	The Earl of Derby KG	1995	Norman J Garrod CBE
1872	Lord GF Hamilton MP	1936	The Earl of Athlone KG	1996	Sir Frank Rogers
1873	The Lord Mayor (Sir SH Waterlow Bt)	1937	Lord Portal	1997	Jeremy JS Marshall Esq.
1874	John Walter Esq. MP	1938	Sir Edgar L Waterlow Bt MA	1998	Sir David English
1875	Earl Cadogan	1939	Sir Emsley Carr	1999	The Rt Hon Lord Wakeham
1876	HRH The Duke of Cambridge	1940	The Rt Hon C W Bowerman JP	2000	Ivan E Heath Esq.
1877	The Rt Hon WE Gladstone MP (second time)	1941	RA Austin-Leigh Esq.	2001	Ian Park Esq.
1878	The Earl of Roseberry KG	1942	Maj-Gen The Hon EF Lawson CB DSCO MC	2002	Ian Park Esq.
1879	W Spottiswoode Esq. LLD PRS	1943	Walter Hutchinson Esq. MA	2003	Richard Lambert Esq. BA Hons
1880	The Lord Mayor (Sir F Wyatt Truscott)	1944	The Hon Rupert E Beckett JP	2004	Sir Jeremy Elwes CBE ACIS FRSA
1881	Earl Spencer	1945	Viscount Kemsley (second time)	2005	The Bishop of London (The Rt. Hon. Rt. Rev. Richard Chartres)
1882	Sir T Brassey KCB MP	1946	Sir Walter T Layton CH CBE	2006	The Rt Hon Jonathan Harmsworth (Viscount Rothermere)
1883	HRH The Duke of Albany	1947	Arthur Cousins Esq. CBE	2007	Sir Clive Martin
1884	JS Gilliat Esq. Governor of Bank of England	1948	Ralph C Hazell Esq.	2008	Barry Hibbert Esq.
1885	The Lord Mayor (Sir R N Fowler MP)	1949	Sir Frank Newnes Bt	2009	Michael Johnson Esq.
1886	Earl Beauchamp	1950	The Hon David J Smith JP	2010	Michael Johnson Esq.
1887	George Augustus Sala Esq.	1951	Geoffrey L Tillotson Esq.	2011	Sir Christopher Meyer, KCMG
1888	The Lord Mayor (Sir Peter De Keyser)	1952	J Bowes Morrell Esq. JP LLD	2012	Murdoch MacLennan
1889	The Lord Mayor (Sir J Whitehead Bt)	1953	The Hon Lionel Berry	2013	Lord Black of Brentwood
1890	John Evans Esq. DCL LLD			2014	Lord Black of Brentwood
1891	Sir Edward Lawdon			2015	HRH The Duke of York, KG
1892	Ralph DM Littler Esq. QC CB				
1893	The Hon WF Danvers-Smith MP				

# The Charity Celebrates the 150th Anniversary of the signing of the original Royal Charter!

With a Summer BBQ at Stationer's Hall....



And a 'walk through history' at the St Bride Foundation...







HOMES



HELPS



TRAINING & EDUCATION



LINKS