



Aluminium Cassette Roller Blinds
for Dim Out and Sunscreen



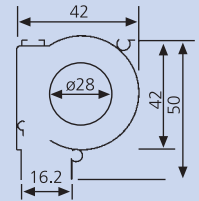
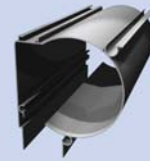


The Cassette Series

Cassette System 40

Perfect for smaller windows and door panels.

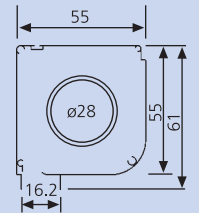
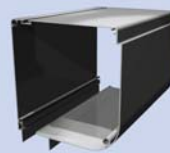
The System 40 is a simple, robust and efficient cassette roller blind. Designed and constructed with a one piece extruded cassette. Operated by standard spring unit or bead chain.



Cassette System 55

Ideal for a wide variety of applications.

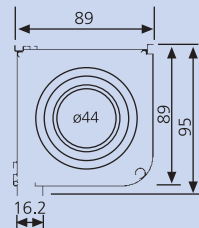
A one piece extruded cassette box, which can be specified with a range of operating methods. These include bead chain and regulated clutch, manual gearbox and handle or electrical tubular motor.



Cassette System 90

The right roller blinds for larger windows.

One piece extruded cassette offers exceptional strength across larger windows, or in awkward configurations. The normal methods of operation are either manual gearbox or electric tubular motor. See System 100 for roof blinds.





Methods of Operation

System 40 and System 55

Operating tension is easily adjusted by means of a cap socket screw. A unique bead chain guide can permit operation through the window frame.



System 40 & 55

System 55 and System 90

System 55 can be used in conjunction with the following Somfy items:

GPS 1020 Power Supply
LT28 Somfy motor
Inteo Telis RTS/Telis 4 RTS radio remote control
IRS 300 Infra-Red Receiver



System 55 & 90

The System 90 can be used in conjunction with the following Somfy items:

Inteo Centralis UNO IB VB switch
Altus RTS switch
Inteo Telis RTS/Telis 4 RTS radio remote control
AC motor Infra-Red Receiver

System 100

Cassette roof blinds are available up to a maximum width of 120cm and a drop of 150cm. Further sizes are available by request. This system is available on a motorised or gear operated system and can be fitted to any ° angle. Rods are welded into fabric to provide support and prevent sagging.



System 100

Innovative Technology & Control Systems

Innovative Technology

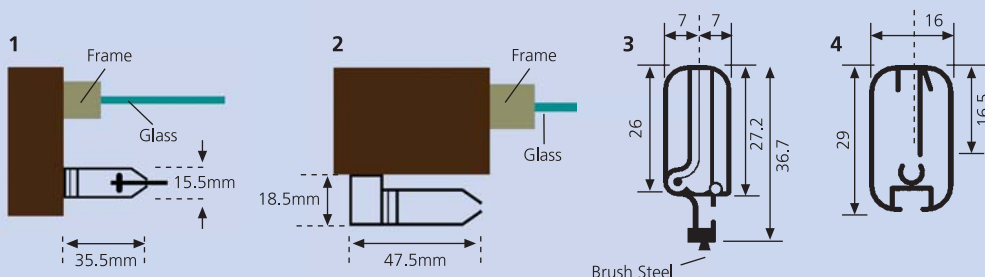
Designed with a one piece extruded aluminium cassette box to give a neater, modern appearance and incorporating two part adjustable side guides to provide dim out conditions for environments such as schools, offices and hospitals.

Side Guides

- 1 Two part telescopic side guides for easy adjustment to provide smooth operation within the reveal.
- 2 Two part telescopic side guides for face fixing or special applications.

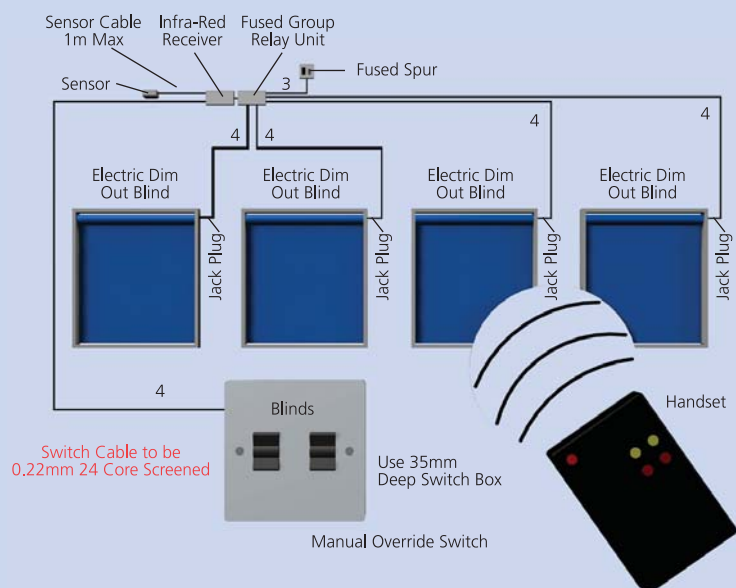
Bottom Rail

- 3 Double aluminium profile with the addition of a bottom lock facility and brush seal to improve the efficiency of light exclusion or insect screening. Used with all side guided installations.
- 4 Aluminium bottom rail for cassette roller blinds without side guides.



Control Systems

Electronic systems controlled together by an infra-red system with one manual override switch and fused group relay unit. Using an interface unit, installations can also be controlled by central computer.



Size Chart

Aluminium Cassette	Rollers Ø Tube Size	Fabrics	Methods of Operation							
			Bead Chain		Spring		Gear Box		Motor	
			Max widths	Max drop	Max widths	Max drop	Max widths	Max drop	Max widths	Max drop
System 40	28mm	Room Darkening Sun Screen	160 160	150 140	150 150	150 140				
System 55	28mm	Room Darkening Sun Screen	210 210	210 210	150 150	150 150	220 220	230 230		
System 90	44mm	Room Darkening Sun Screen					350 350	280 240	300 300	260 210
System 100	44mm	Room Darkening Sun Screen					120 120	150 150	120 120	150 150

* For guidance only

System 40, 55 and 90 can be fitted up to 35° of inclination.

System 100 blinds can be fitted with any degree of inclination.

Fabrics. A range of fabrics are available for all three cassette systems. **Dim Out** blinds are normally specified with Unilux fabric. This is a PVC coated fiberglass laminate which meets BS 5867 Part 2 Type B 1980 and BS 476 Part 6 Class O BS476 Part 7 Class 1 for flame retardancy. **Sunscreening** blinds incorporate sophisticated open weave fabrics to provide significant reductions in solar glare and heat. These fabrics are flame retardant to the highest standards and offer outward visibility along with daytime privacy. They create improved working conditions and at the same time conserve energy. Sunscreen options do not require side guides.

Profile Colours. Standard profile colours are RAL 9005 black and powder coated white to RAL9010.

Fabric colours. Available in a wide range of colours to complement the most creative decors.

Dim Out Applications. It is recommended that colour black profiles are specified for this type of use.



Decora Blind Systems Limited Tel: +44 (0) 28 9266 3600
1 Ferguson Drive Fax: +44 (0) 28 9266 0890
Knockmore Hill Ind. Park E-mail: sales@decora.co.uk
Lisburn, BT28 2FL www.decora.co.uk
Northern Ireland

