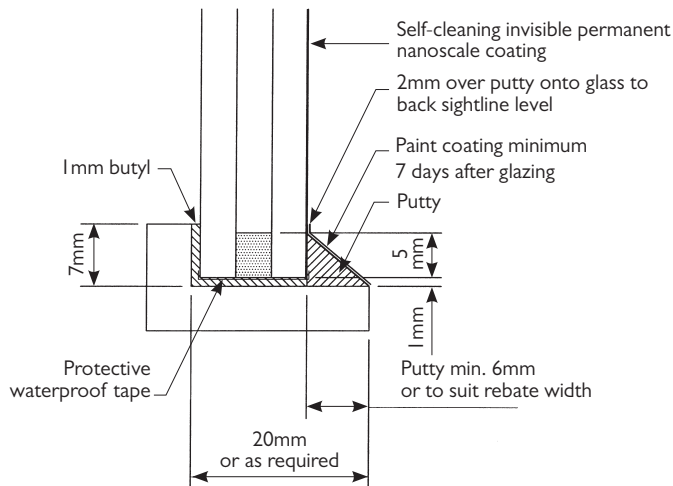
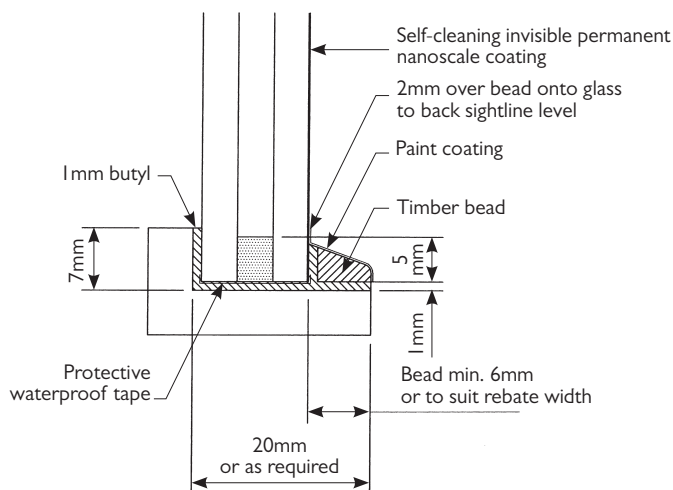


## slimlite glazed with putty & butyl



## slimlite glazed with beads & butyl



## Double Glazing Breakdown or Misting

This is caused by failure of the glazing method which must protect the unit seal from the ingress of water or moisture. All double glazing sealants used in the manufacture of double glazing units have a moisture vapour transmission rate when exposed to water or moisture, which will cause misting or breakdown eventually over a period of time. Where units are foreputtied, the putty must be painted and on to the glass to provide a seal to protect the putty from moisture ingress. Foreputty should be left for 7 to 10 days before painting and within 28 days. Similarly when glazed with beads and non hardening compound, paint or protective coating should be applied over the bead and on to the glass. Where timber preservative has been used, Manufacturer's instructions should be followed to prevent reaction with glazing compound. All Slimlite Self Cleaning Units are edge taped with a strong adhesive aluminium foil which helps to avoid damage during handling, but most importantly provides some extra protection should glazing failure occur allowing ingress of water or moisture.

It is recommended that timber windows should be painted every five years Inland areas and three years Coastal areas. However it is recommended that the paint protection of the glazing including the overlap on to the glass face, should be repainted every three years to maintain the required protection particularly with putty fronting as a minimum. However more frequent 'spot painting' may be necessary to maintain the required standard of protection.

BS6262 Section 9.3.2.4.2

BS6262 Section 9.3.3.2

[www.sashglass.co.uk](http://www.sashglass.co.uk)





# slimlite<sup>®</sup>

## Double Glazed Units

Premier Quality Certified Products

### CONSTRUCTION DETAILS AND DIMENSIONS

FOR

**GEORGIAN TIMBER SASH  
AND CASE WINDOW**

WITH

**SLIMLITE SELF-CLEANING  
DOUBLE GLAZING UNITS**

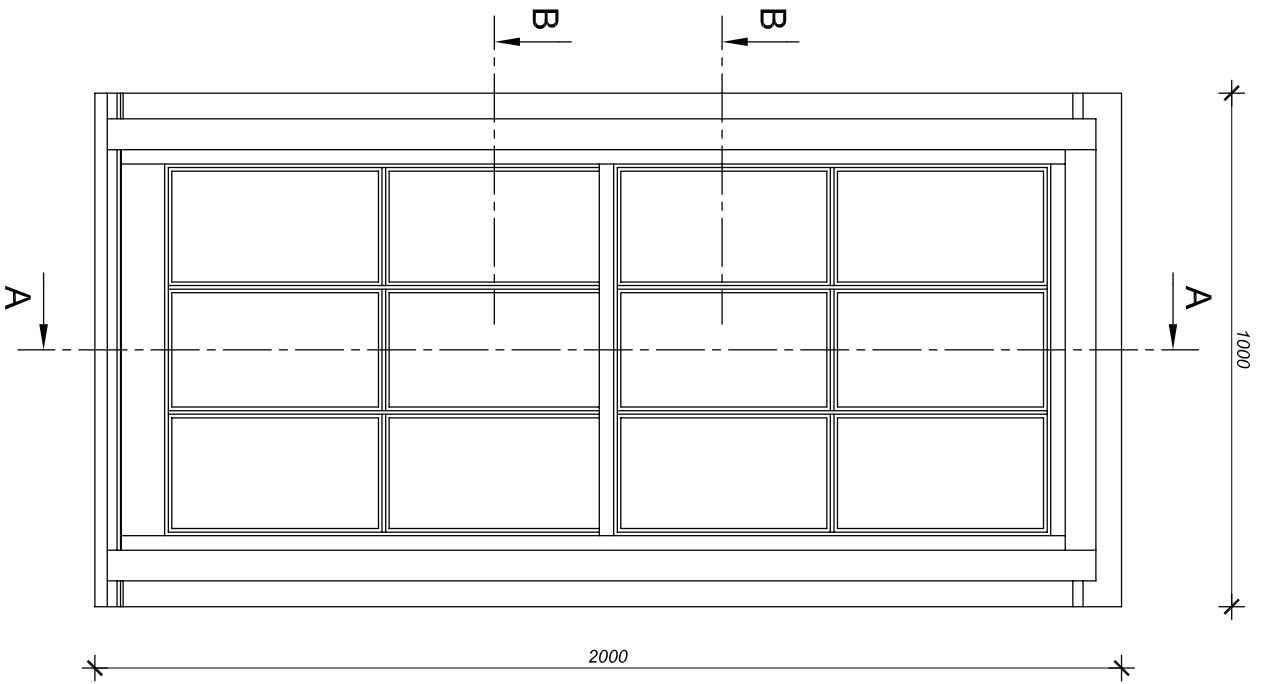
## SashGlass

### Slimlite Double Glazed Units

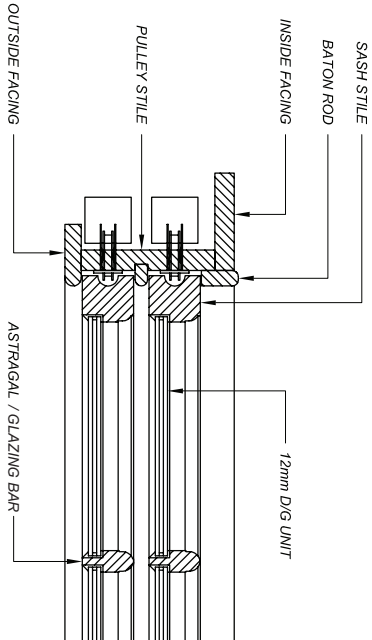
• 1 Royal Buildings • The Strand • Deal Kent • CT14 7HD  
tel 01304 369 988 fax 01304 379 881 email [info@sashglass.co.uk](mailto:info@sashglass.co.uk)

SLIMLITE DOUBLE GLAZED UNITS ARE PATENT PROTECTED PRODUCTS  
Granted UK Patent Slimlite®

Specialist slimlite double glazed units - reproduction crown sheet

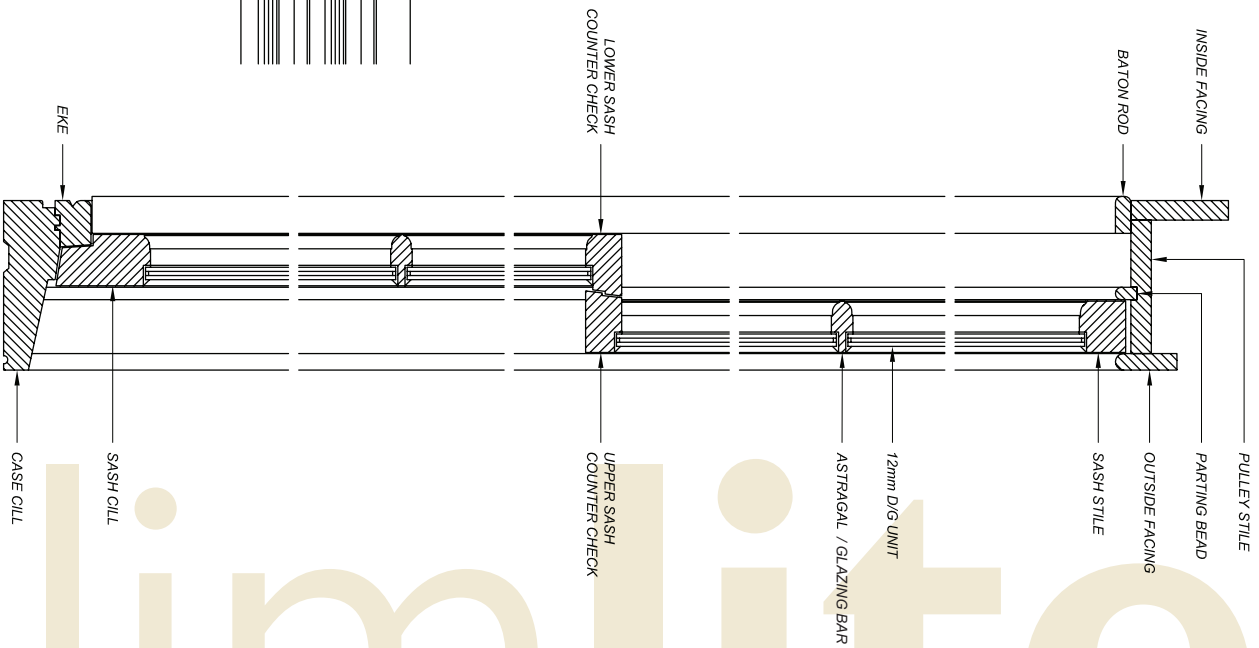


Elevation



Section B-B

Suitable for new or replacement windows.



Section A-A

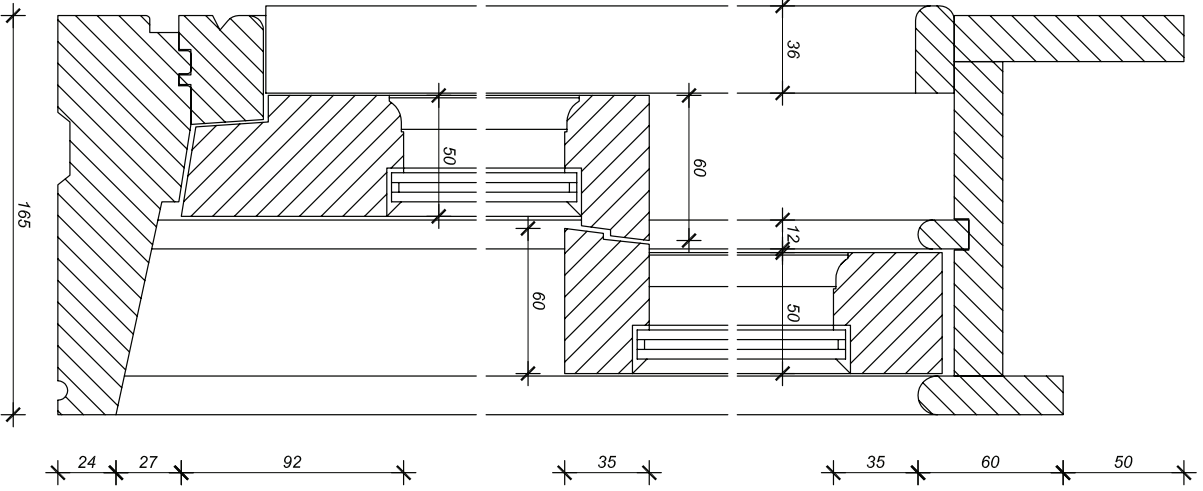
Head

16 95

19 165 130 16

Meeting Stiles

85 38 12 35 58

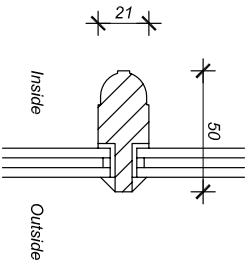
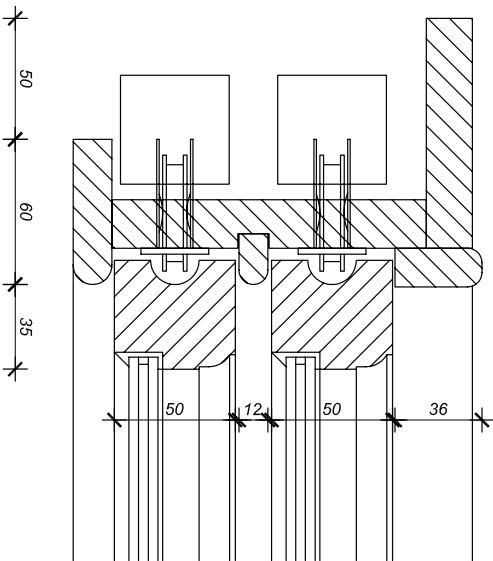


Cill

165 16 130 19

95 16

Jamb



Astragal

THIS DRAWING IS THE PROPERTY OF SLIMLITE DOUBLE GLAZING CO. LTD. AND ANY UNAUTHORIZED DISTRIBUTION TO A THIRD PARTY IS STRICTLY FORBIDDEN. NOT TO SCALE.

# Double Glazed Units