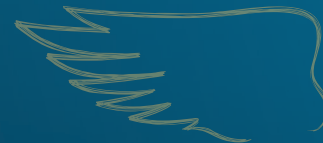




DK EXSTEEL

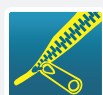
Registration Year 2017, UK
THE RECOMMENDED ALL-ROUNDER



VIGOROUS ESTABLISHMENT



DOUBLE PHOMA RESISTANCE



POD SHATTER RESISTANCE

PRODUCT CHARACTERISTICS

GROSS OUTPUT	101 %
OIL CONTENT	45.5 %
EARLINESS AT REGROWTH	MID-LATE
EARLINESS AT FLOWERING	1 2 3 4 5 6 7 8 9
EARLINESS AT MATURITY	1 2 3 4 5 6 7 8 9
PLANT HEIGHT	1 2 3 4 5 6 7 8 9
LODGING RESISTANCE	1 2 3 4 5 6 7 8 9
STEM STIFFNESS	1 2 3 4 5 6 7 8 9
POD SHATTERING RESISTANCE	YES
PHOMA RESISTANCE	1 2 3 4 5 6 7 8 9
LIGHT LEAF SPOT RESISTANCE	1 2 3 4 5 6 7 8 9

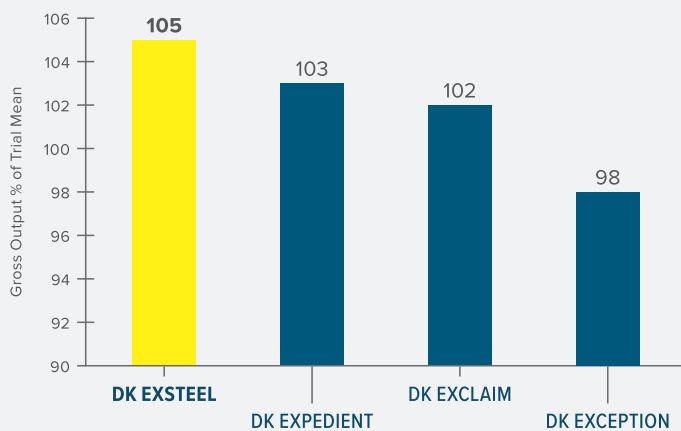
AHDB Recommended List 2019/20 - Table 13

VARIETY BENEFITS

- 1 Ultra rapid Autumn growth habit – suitable for drilling up to mid September
- 2 Very good combined Stem Canker and Light Leaf Spot Resistance
- 3 Pod Shatter Resistance

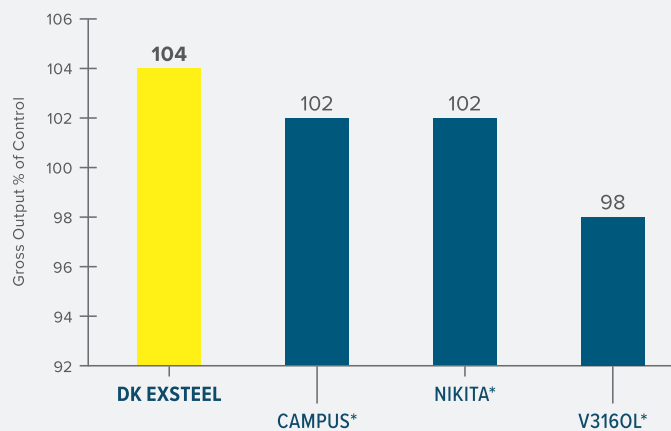
GROSS OUTPUT

DEKALB UNTREATED BREEDING TRIALS 2018



Source: Extract from DEKALB UK Untreated Breeding Trials 2018, trial mean 4.43t/ha

AHDB RECOMMENDED LIST 2019/20 – NORTH REGION GROSS OUTPUT



Source: AHDB Recommended List 2019/2020 - North Region Gross Output, *denotes Control Variety. Data available from <https://cereals.ahdb.org.uk>

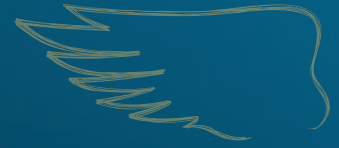
Contact us at uk.dekalb@monsanto.com or learn more at dekalb.co.uk



DK EXSTEEL

Registration Year 2017, UK

THE RECOMMENDED ALL-ROUNDER



KEY TRAITS



VIGOROUS ESTABLISHMENT

Proven ability to establish robust, well-rooted plants that are best able to cope with challenging UK conditions.



RAPID AUTUMN DEVELOPMENT

Rapid Autumn growth habit means that as well as being suitable for the main drilling window it can be the ideal variety for delayed drilling or less than ideal conditions.



DOUBLE PHOMA RESISTANCE

The combination of the RLM7 gene and polygenic resistance provides outstanding, durable resistance to phoma stem canker and some flexibility in fungicide application.



GOOD LIGHT LEAF SPOT RESISTANCE

Solid polygenic resistance providing a good level of protection from Light Leaf Spot the 2nd most important OSR disease.



POD SHATTER RESISTANCE

Genetic resistance that minimizes yield loss and volunteer issues caused by seed shedding up to, and during, harvest.



HIGH OIL

Consistent high oil content adding value to the harvested crop through higher oil bonus payments.

BREEDER'S VIEW

“DK EXSTEEL is a very high yielding new hybrid producing exceptionally high oil content from a very attractive agronomy package. Features include pod shatter resistance, ‘8’ ratings for lodging resistance and stem canker resistance and a ‘7’ rating for light leaf spot resistance. AHDB have selected this variety as an RL candidate for the whole of the UK, and its potential is demonstrated by its performance in the Northern region where it is the top yielding variety.”



MATTHEW CLARKE

RECOMMENDATIONS

Seed rate should target an even plant stand of 25-30 plants/m² in spring.

The rapid autumn growth habit means a PGR may be appropriate in early/mid October on crops early sown or on fertile sites to reduce the risk of over development pre winter.

Ensure the Green Area Index is accurately determined at the start of spring growth to guide appropriate nitrogen rates for optimal canopy size. A PGR at early green bud may be appropriate to reduce crop height.

Contact our National Account Managers:
tom.chillcott@bayer.com, 07976 397300,
lizzie.matthews@bayer.com, 07918 622318
or our Technical Development and Agronomy representative:
william.vaughan-france@bayer.com, 07768 507866

or learn more at dekalb.co.uk

DEKALB is a trademark of the Bayer Group.