



LOCKE & ENGLAND
AUCTIONEERS & VALUERS

NOVEMBER SALE OF

**SELECTED ANTIQUE FURNITURE
& COLLECTORS' ITEMS,
JEWELLERY & WATCHES**

VIEWING

Saturday 24th November
10.00 am - 2.00 pm

Tuesday 27th November
9.00 am - 5.00 pm

Wednesday 28th November
9.00 am - 7.00 pm

Morning of the sale
from 9.00 am

AUCTION

**Antique Furniture &
Collectors' Items**

Thursday 29th November 2018
Commencing at 11.00 am

Jewellery & Watches

Thursday 29th November 2018
Commencing at 3.00 pm

Leamington Spa Auction Centre

CATALOGUES

£5 by post,
online at www.leauction.co.uk

LIVE INTERNET BIDDING

Live internet bidding available via

the saleroom
The home of art & antique auctions



LOCKE & ENGLAND

AUCTIONEERS & VALUERS

Weekly Thursday Sales

TO INCLUDE (SUBJECT TO DELIVERY)

Antique & Modern Furniture • Clocks • Books
Ceramics & Glassware • Pictures & Prints • Bicycles
Jewellery & Watches • Garage Tools & Equipment
Household Electrical Items • Building Reclaims
Office Furniture & Equipment • Retail Products & Stock
Horticultural & Commercial Equipment • Vehicles
Garden Furniture & Effects • Collectables

Entries Invited

**Friday & Monday 8.30am - 5.30pm
and Tuesday by appointment**

Leamington Spa Auction Centre 12 Guy Street, Leamington Spa, CV32 4RT
01926 889 100 or info@leauction.co.uk

www.leauction.co.uk

FURNITURE, RUGS
& CLOCKS



FURNITURE, RUGS & CLOCKS



Lot 4

1
A Victorian oak extending table with three fitted leaves on turned supports and castors, max l. 318 cm
£400 - £600

2
A 19th century elm and ash Windsor chair with a shaped and pierced splat, turned arm supports, legs and stretchers, h. 101 cm, w. 54 cm, d. 54 cm
£150 - £250

3
An 18th century oak low boy, the moulded top over three drawers and shaped frieze on cabriole legs, h. 71 cm, w. 82 cm, d. 46 cm
£150 - £250

4
A reproduction oak coffer, the three panel top and front with Elizabethan style carving, h. 60 cm, w. 128 cm, d. 54 cm
£120 - £180

5
A Dutch oak glazed bookcase, the top with single door revealing fixed shelving over the bombe base with three drawers on stylised ball and claw feet, h. 200 cm, w. 130 cm, d. 36 cm
£150 - £250



Lot 3

6
An 18th century oak settle, the four fielded paneled back over later solid seat on cabriole legs with pad feet, h. 107 cm, l. 202 cm, d. 73 cm
£200 - £300



Lot 1



Lot 5



Lot 7

7
A 19th century elm and ash Windsor chair with a pierced splat, turned arm supports, legs and stretchers, h. 111 cm, w. 58 cm, d. 55 cm
£150 - £250

8
A late 17th century oak coffer, the top lifting to reveal a vacant interior over a paneled front with contemporary carving, one panel dated 1692 with the initials I.S., h. 72 cm, l. 163 cm, d. 60 cm
£200 - £300



Lot 8



Lot 9

9

A late 18th or 19th century elm dough bin, the loose cover on a tapering base over chamfered legs with carry handles, h. 66 cm, w. 110, d. 60 cm *£200 - £300*

10

A late 17th / early 18th walnut chest on stand, the secret cushion front drawer over two short and three long drawers on the stand with one drawer above shaped apron, turned legs, feet and curved stretchers, h. 167 cm, w. 113 cm, d. 63 cm *£300 - £500*



Lot 10

12

A second quarter 18th century and later oak dresser base, the top with a five drawer superstructure above a row of four drawers over turned supports and pot board, h. 92 cm, l. 146 cm, d. 49 cm *£200 - £300*

13

A late 17th / early 18th century oak chest of drawers, the top over four long drawers with geometric moulding to fronts on later bracket feet, h. 92 cm, w. 92 cm, d. 55 cm *£300 - £500*

11

A late 17th / early 18th century oak chest of drawers, the top over four long drawers with geometrical moulding on later bracket feet, h. 92 cm, w. 91 cm, d. 56 cm *£300 - £500*

14

An early 18th century oak table, the cleated top over a carved frieze on turned legs, h. 74 cm, w. 76 cm, d. 54 cm *£150 - £250*



Lot 11



Lot 12

15

A set of four oak side chairs, design attributed to A.W.N. Pugin and possibly made by Crace, circa 1850, the top rail with carved monogram R.O.F. over a solid seat with four later floral patterned grey upholstered pads, h. 91 cm, w. 45 cm, d. 51 cm £500 - £800



Lot 13

16

An early 19th century walnut adjustable music/correction stool with floral pink upholstery on turned front legs, h. 84 cm, w. 33 cm, d. 42 cm £40 - £60



Lot 17 (detail)



17

A Victorian mahogany extending dining table, the moulded top on turned and oval carved legs on ceramic castors, with three leaves and winder, h. 75 cm, max l. 281 cm, w. 117 cm £400 - £600

Lot 15



18

A set of twelve Victorian mahogany balloon back dining chairs upholstered in a patterned white gold fabric, the serpentine seat on turned and fluted front legs, h. 88 cm, w. 48 cm, d. 56 cm

£400 - £600



Lot 20 (part lot of a bedroom suite)





Lot 21

19

A Victorian rosewood prie dieu upholstered in a florally patterned fabric, the carved and pierced back over carved cabriole legs, h. 109 cm, w. 54 cm, d. 62 cm *£100 - £150*

20

An early 20th century walnut and burr walnut bedroom suite by S. Hille and Co. 140 Old Street EC1, comprising of a ladies wardrobe (h. 186 cm, w. 108 cm, d. 62 cm), gentleman's wardrobe (h. 151 cm, w. 108 cm, d. 54 cm), dressing table with stool (h. 134 cm, w. 132 cm, d. 58 cm), two bedroom chairs (h. 86 cm, w. 47 cm, d. 46 cm) and double bed the headboard with two bedside cabinets (h. 133 cm, w. 232 cm) *£2,000 - £3,000*

21

A 19th century mahogany partners desk by M. Willson of 68 Great Queen Street, having an olive green tooled leather insert to top over a row of three drawers, the knee hole flanked by cupboard and three drawers all mirrored to the other side on plinth base, h. 78 cm, w. 167 cm, d. 107 cm *£300 - £500*

22

An Edwardian mahogany tray table with removable glass bottomed galleried tray on four C-scroll supports with acanthus carved terminals over a brass galleried quatrefoil under tier on brass mounted turned splay legs, h. 79 cm, w. 52 cm, d. 52 cm *£100 - £150*

23

A Victorian simulated rosewood prie dieu upholstered in a cut green fabric on turned legs and brass cup castors, h. 99 cm, w. 51 cm, d. 63 cm *£40 - £60*

24

An Edwardian mahogany, satinwood banded and boxwood strung bow front desk, the top with a red tooled leather insert over central drawer flanked by two banks of three drawers on square section tapering legs, h. 77 cm, w. 136 cm, d. 61 cm *£150 - £250*

25

An Edwardian mahogany, marquetry and ivorine strung open arm chair upholstered in a gold cut fabric, h. 90 cm, w. 60 cm, d. 59 cm *£40 - £60*

26

A late 18th century mahogany bow front writing table, the moulded top over a row of three drawers on square section tapering legs, h. 75 cm, w. 91 cm, d. 50 cm *£120 - £180*

27

A set of six George III mahogany dining chairs upholstered in black woven horse hair on a drop in seat, h. 90 cm, w. 50 cm, d. 48 cm *£100 - £200*

28

A Victorian walnut footstool upholstered in a needlework fabric over the carved rails with shell design on carved cabriole legs, h. 23 cm, w. 36 cm, d. 34 cm *£30 - £50*

29

An Edwardian rosewood and marquetry display cabinet, the swan neck pediment over central beveled glass mirrors flanked by beveled glass, astragal glazed doors over the bow front base with two drawers over cupboard doors flanking galleried open storage over a galleried under tier, h. 240 cm, w. 152 cm, d. 47 cm £200 - £300



Lot 29

Lot 31

30

A Louis XV-style kingwood, satinwood and floral marquetry serpentine side cabinet, the moulded serpentine brown, grey and white mottled marble top over two quarter-veneered doors on a gilt-metal mounted shaped apron and cabriole feet with gilt sabors, stamped 256 verso, w. 122 cm £150 - £250

31

A 19th century French ebonised and gilt brass mounted Boule credenza, the top over side ogee glazed doors flanking central cupboard door on plinth base, h. 107 cm, w. 169 cm, d. 45 cm £1,500 - £2,000

32

A Victorian mahogany chaise longue upholstered in a blue button back fabric on turned legs, h. 90 cm, l. 180 cm, d. 56 cm £100 - £150



Lot 33



33

A Georgian mahogany set of library steps with three steps and turned supports, h. 153 cm, w. 49 cm, d. 73 cm *£150 - £250*

34

A late Victorian walnut circular occasional table on turned legs with under tier, h. 76 cm, dia. 56 cm *£70 - £100*

35

A Regency and later mahogany tilt top table, the circular top on tapering hexagonal column, triform platform base and paw feet, h. 70 cm, dia. 76 cm *£80 - £120*

36

An Edwardian mahogany, satinwood banded and marquetry revolving bookcase, h. 86 cm, w. 50 cm, d. 50 cm *£80 - £120*

37

A George III and later mahogany bureau bookcase, the top with two astragal glazed doors over the fall front with fitted interior above four graduated drawers on bracket feet, h. 219, w. 102 cm, d. 54 cm *£100 - £150*

38

A 19th century Anglo Indian teak occasional table, the square top on octagonal legs spaced by arched panels, h. 61 cm, w. 62 cm, d. 62 cm *£80 - £120*



Lot 38

39

A Georgian mahogany extending dining table comprising of two D-ends, central single drop leaf table and one loose leaf on square section tapering moulded legs, h. 71 cm, max l. 252 cm, w. 114 cm *£250 - £350*

40

A near pair of early 20th century mahogany Gainsborough chairs upholstered in green leather with brass studs, the serpentine topped backs over open arms and square section legs and H-stretchers, h. 99 cm, w. 71 cm, d. 73 cm *£300 - £500*



Lot 40



41

A 19th century and later ebonised, parcel gilt and painted French centre table, the shaped top with painted flowers above two side drawers on a turned column and four carved splay legs, h. 68 cm, w. 116 cm, d. 67 cm

£100 - £150

42

A 19th century teak two drawer writing table, the quarter veneered top with marquetry, rosewood and tulipwood banding over four turned and octagonal section legs with yew wood applied roundel's topped with yew wood pyramids, h. 73 cm, w. 122 cm, d. 76 cm

£150 - £250



Lot 43

43

A Regency and later mahogany open arm chair upholstered in a floral striped fabric, the reeded show frame with C-scroll arm supports terminating in cubes with applied roundel's, on later front legs, h. 100 cm, w. 61 cm, d. 68 cm

£100 - £150

44

A Victorian mahogany three tier what-not, the galleried top over serpentine shelves and barley twist supports, h. 79 cm, w. 43 cm, d. 33 cm

£50 - £80



Lot 42

45

A reproduction mahogany and parquetry topped nest of two Regency style tables on reeded legs, h. 66 cm, w. 49 cm, d. 32 cm *£70 - £100*



Lot 46

46

A Victorian walnut, boxwood strung and marquetry breakfast table, the quarter veneered tilt top on a four column base with four carved splay legs, h. 73 cm, w. 134 cm, d. 96 cm *£150 - £200*

47

A Regency mahogany and ebonised toilet mirror, having reeded frame on turned supports over a bow front base with three drawers on bun feet, h. 59 cm, w. 65 cm, d. 24.5 cm *£50 - £80*



Lot 47

48

An early 20th century Anglo-Indian rosewood side table by Spencer & Co. Madras, h. 76 cm, w. 116 cm, d. 55 cm *£100 - £150*

49

A late 19th century mahogany corner chair with a needle work upholstered drop in seat, the carved arms over turned supports and carved splat's on carved cabriole legs with ball and claw feet, h. 78 cm, w. 77 cm, d. 67 cm *£70 - £100*

50

A composite stone statue of the Discobolus of Myron (discus thrower), a Greek sculpture figuring a youthful ancient Greek athlete throwing a discus, h. 168 cm, w. 98 cm *£200 - £300*

51

A 19th century French brass and glass chandelier with frosted and etched main shade and two frosted side shades, h. 105 cm *£100 - £150*

52

A late 18th century mahogany secretaire bookcase, the dental cornice over two Gothic arch astragal glazed doors, secretaire drawer and two cupboard doors, h. 216 cm, w. 117 cm, d. 54 cm *£150 - £250*

53

An 18th century and later (marriage) mahogany chest of drawers, the top with two short over one long drawers, splitting from the base with two long drawers on turned feet, h. 103 cm, w. 92 cm, d. 50 cm *£80 - £120*

54

A 19th century mahogany chest of drawers, the top over a cushion fronted secret drawer, two deep drawers flanking two short drawers and three long drawers on plinth base, h. 123 cm, w. 122 cm, d. 58 cm *£120 - £180*

55

A Victorian rosewood and mahogany pole screen with floral needle work panel over a fluted stylised bud column on platform base and three carved C-scroll feet, h. 140 cm, w. 41 cm *£40 - £60*

56

A Victorian rosewood piano top davenport, the galleried top lifting to reveal pigeon holes over three birds eye maple veneered drawers and two dummy drawers with side stationary drawer above the side sliding slope with a tooled green leather insert over the base with four side drawers mirrored with dummies and carved C-scroll supports on bun feet, h. 92 cm, w. 54 cm, d. 55 cm *£400 - £600*

57

A late 19th century Indian ebonised stand, the florally carved circular top over a carved elephant with bone tusks on platform base, h. 58 cm, w. 49 cm, d. 31 cm *£100 - £150*

58

A late 18th century mahogany bureau bookcase, the cavetto cornice over two astragal glazed doors, the fall front with fitted interior and four long drawers on bracket feet, h. 194 cm, w. 90 cm, d. 55 cm *£80 - £120*



59

An 18th century Italian marquetry panel depicting a hunting scene, composed from sand shaded cedar wood and engraved ivory set in walnut with a cross banded border, w. 133 cm, h. 46 cm *£80 - £120*

60

A mid 18th century oak two drawer side table, the moulded top on square section tapering legs, h. 72 cm, w. 82 cm, d. 49 cm *£80 - £120*





Lot 61

61

A mid 18th century oak chest of two short over four long drawers on bracket feet, h. 135 cm, w. 104 cm, d. 52 cm

£100 - £200

62

An early 18th century oak coffer, the three paneled top lifting to reveal a vacant interior, over a three paneled front, h. 52 cm, w. 100 cm, d. 49 cm

£100 - £150



Lot 63

63

An 18th century and later French oak coffer, the half replaced top over a two panel front with carved crosses, h. 65 cm, w. 125 cm, d. 65 cm

£150 - £250



Lot 64

64

An early 19th century oak floor standing corner cupboard, the dental cornice over two Roman arch paneled doors above two cupboard doors on plinth base, h. 211 cm, w. 115 cm

£80 - £120



Lot 65

65

A pair of 19th century oak occasional tables, the rectangular galleried tops over a turned column and a triform platform base with squat bun feet, h. 58 cm, w. 47 cm, d. 27 cm *£50 - £80*

66

An 18th century oak tilt top tripod table, the circular top on a turned column and three splay legs, h. 67 cm, dia. 76 cm *£50 - £80*

67

A Victorian oak settle, the carved two paneled back with carved lion arms over the lift up seat and carved front on plinth base, h. 94 cm, w. 122 cm, d. 47 cm *£100 - £150*



Lot 69

68

An 18th century oak and mahogany crossbanded bow front corner cupboard, the two doors opening to reveal later painted fixed shelving, h. 99 cm, w. 64 cm *£50 - £80*

69

A reproduction oak open armchair having pierced and shaped top rail, splat and arms over a serpentine seat on turned legs and stretchers, h. 96 cm, w. 71 cm, d. 60 cm *£50 - £80*

70

A Regency and later mahogany, boxwood strung and ebonised tea caddy, with lion mask handles, bone escutcheon, two compartments with lids and a print to verso of lid, h. 14 cm, w. 26 cm, d. 16 cm *£40 - £60*

71

A 19th century flame mahogany twin pedestal side board, the shell carved back over a two drawer centre section flanked by the pedestals with single drawer over Gothic arch panel cupboard door enclosing shelving and a cellarette drawer, h. 106 cm, w. 214 cm, d. 58 cm *£80 - £120*



Lot 67

72

A Regency and later extending dining table, with two Regency D-ends having reed moulded tops over turned legs on brass cup castors along with three later leaves, h. 72 cm, max l. 255 cm, w. 146 cm *£150 - £250*

73

An early 19th century mahogany, boxwood strung and cross-banded work table, the top with lift up screen (missing) over side brushing slide and single drawer on twist turned legs, cross stretchers an brass cup castors, h. 73 cm, w. 49 cm, d. 43 cm *£50 - £80*

74

A late 18th century mahogany and boxwood strung toilet mirror, the oval glass over a serpentine base with three drawers, h. 53 cm, w. 50 cm, d. 24 cm *£40 - £60*

75

A mid 20th century female mannequin by Fery-Boudrot on metal base, h. 168 cm *£150 - £250*

Lot 75



Lot 74



Lot 76

76

A 19th century French walnut mirror, the galleried top over the beveled glass plate flanked by turned and fluted columns, h. 166 cm, w. 96 cm *£100 - £150*

77

A Jaeger Le-Coultre 'All The Queen's Horses Atmos du Millenaire' clock, produced as a Golden Jubilee tribute to Her Majesty, the dial framed by a concentric skeletonised band giving each year from 2000AD to 3000AD, the centre set with a month dial and rolling moon phase between baton numerals and hands, the perpetual type movement with rotating torsion pendulum, the gilt lacquered and crystal case of triangular form listing British monarchs, on three gilt conical feet *Produced as a special commission for Asprey/Garrard **Sold with associated box and paperwork £8,000 - £12,000



Lot 78

78

A Jaeger Le-Coultre 'Atmos Embassy' clock, the faux green marble front and side panels within a gilt metal case, the dial with Breguet hands over a balance wheel and spirit level below, the base with a start/stop lever, together with the outer case and associated paperwork £500 - £800

79

An 18th century mahogany and crossbanded long case clock, the later painted face with Roman numerals, second and date dials, pierced hands and an eight day movement, h. 212 cm, w. 53 cm, d. 24 cm £200 - £300

80

A 19th century French walnut long case clock, the enameled face with Arabic numerals, pierced hands, repousse brass surround and a thirty hour movement with a stone weight, h. 242 cm, w. 43 cm, d. 32 cm £250 - £350



Lot 79



81

A 19th century mahogany long case clock, the swan neck pediment over the enameled face with Roman numerals, date and second dials, pierced hands, painted spandrels and arch top with an eight day movement, signed M. Brown of Leeds h. 238 cm, w. 73 cm, d. 28 cm

£300 - £500



82

A 19th century mahogany longcase clock, the swan neck pediment over the enameled face with Roman numerals, date and second dials, pierced hands, painted spandrels depicting ladies and the top arch depicting a fight scene from Rob Roy, with an eight day movement, signed James Cassels, h. 223 cm, w. 51 cm, d. 24 cm £200 - £300

Lot 81



83

A 19th century French brass clock garniture, the face with Roman numerals and pierced hands surmounted by a lyre and cased in a pierced brass case with floral swags and scrolling brackets, together with a pair of matching five branch candle sticks, movement and case initialled J.I., h. 60 cm £300 - £500

84

A French brass cased five beveled glass carriage clock, the enameled face with Roman numerals in original carry case, h. 14 cm £70 - £100

85

A pair of Persian rugs, the red grounds decorated with two spirals surrounded and affixed with palmettes including shah abbasi, within matching foliate borders, 196 cm x 124 cm £50 - £80

86

A hand woven Afghan kilim, the multi line border surrounding a central field with square motifs, 192 cm x 135 cm £50 - £80



Lot 87

87

A hand woven Afghan rug, the multi line border enclosing a red ground field with lines of octagons, 205 cm x 124 cm *£150 - £200*

88

A hand woven Afghan runner, the multi lined border enclosing a red ground field with a row of pointed oval medallions, 295 cm x 78 cm *£100 - £150*

89

A hand woven Afghan prayer mat, the multi line border enclosing a red ground field with a mihrab, 100 cm x 77 cm *£50 - £80*

90

A hand woven Afghan kilim, the triple line border surrounding a red ground field with patterned lines, 100 cm x 70 cm *£40 - £60*

91

A hand woven Afghan rug, the multi line border enclosing a peach ground field with three octagonal medallions, 149 cm x 106 cm *£50 - £80*



Lot 92



Lot 95

92

A hand woven Afghan rug, the multi line border surrounding a red ground field with two round medallions, 130 cm x 96 cm *£80 - £120*

93

A hand woven Afghan rug, the multi line border enclosing a red ground field with three columns of octagonal medallions, 180 cm x 124 cm *£80 - £120*

94

A hand woven Afghan rug, the five line border surrounding a red and blue ground field with central star medallion, 132 cm x 117 cm *£40 - £60*

95

A hand woven Afghan rug, the triple line border enclosing a cream ground field with three possible mihrab's, 150 cm x 87 cm *£80 - £120*



Lot 100



96

A hand woven Afghan rug, the multi line border surrounding a red ground field with two columns of octagonal medallions, 182 cm x 113 cm

£100 - £150

97

A hand woven Afghan rug, the multi line border enclosing a beige ground field with three rows of medallions, 178 cm x 127 cm

£100 - £150

98

A hand woven Afghan rug, the multi line border surrounding a red ground field with two columns of octagonal medallions, 126 cm x 81 cm

£40 - £60

99

A hand woven Afghan runner, the border enclosing a brown ground with flat woven stripes, 188 cm x 69 cm

£70 - £100

100

A zebra skin rug with flat head mounted on black felt, 307 cm from head to tail

£80 - £120

Lot 96

PICTURES
AND PRINTS



PICTURES AND PRINTS

101

19th Century School,
a maiden and goat in a mountainous landscape,
a hunt in the background,
unsigned,
oil on board,
12 x 9 cm, together with another presumably by
the same hand (2) *£80 - £120*



Lot 102

102

Circle of George Lance,
still life with fruit and goblet,
bears monogram,
oil on canvas,
38.5 x 32 cm *£100 - £150*

103

19th Century School,
'The...Rock',
unsigned,
oil on panel,
13 x 18 cm *£50 - £80*

104

C. J. Cox (19th Century)
'On Cannock Chase',
signed,
watercolour,
17 x 25 cm *£30 - £50*



Lot 105

105

James W. Milliken (exh. 1887-1930),
'Caudebec',
signed,
watercolour,
25 x 17 cm *£50 - £80*

106

Ditz (20th Century),
'Bathsheba's Cat', after Thomas Hardy's 'Far
from the madding crowd',
signed and dated 1987,
oil on board,
24 x 29 cm *£50 - £80*

107

Walker J: Spain and Portugal, 1838, copper engraved map, h/c in outline, originally published by SDUK and then by Charles Knight in A History of England £30 - £40

108

After Antonio Canaletto, 'The Grand Walk in Wauxhall [sic] Gardens', spuriously signed and dated 'JFK 1770', large enamel plaque *Purchased from Sotheby's 16th April 1996, lot 323

£800 - £1,200



Lot 108

109

Jane E. Spindler (19th Century), a boat on a river, signed and dated 1893, watercolour, 21 x 32 cm

£40 - £60

110

Philip Gray (b. 1959), a figure and dog on a beach, signed, pastels, 24 x 29 cm

£50 - £80



Lot 111

111

Marjorie Tulip (Trekkie) Parsons (nee Ritchie) (1902-1995), 'Head of a woman in black', initialled, oil on board, 19 x 18 cm

£100 - £150



Lot 112

112

Duncan Grant (British 1885-1978) a portrait of Julian Bell signed in pen, pencil sketch, 25 x 20 cm

£200 - £300



Lot 114

113

James W. Milliken (exh. 1887-1930),
a Continental townscape,
signed,
watercolour,
26 x 18 cm, together with the
matching pair (2) *£100 - £150*

114

Sherree Valentine-Daines (b.1959),
'Tea on the Lawn',
signed,
limited edition hand-improved
canvas, numbered 144/195,
39 x 49 cm, with c.o.a. verso
 £100 - £150

115

Sherree Valentine-Daines (b.1959),
Cafe a Midi,
signed,
oil on canvas,
34 x 29 cm
 £1,000 - £2,000



Lot 116



Lot 115

116

Sherree Valentine-Daines (b.1959),
'Sweet Refrain',
signed,
limited edition hand-enhanced canvas,
numbered 16/49,
49 x 38 cm, with c.o.a. verso £100 - £150

117

Philip Gray (b. 1959),
a coastal scene,
signed,
pastels,
56 x 40 cm £100 - £150



Lot 118

118

Maurice Flachet (1872-1964),
La-Grand Place, Brussels,
signed,
oil on canvas,
79 x 59 cm

£300 - £400

119

Walter Dendy Sadler R.B.A. (1854-1923),
'The Landlord',
signed,
oil on canvas,
75 x 49 cm
*Purchased from Sotheby's 16th June 1997,
Lot 364

£1,500 - £2,000

120

Walter Dendy Sadler R.B.A. (1854-1923),
'The Butler',
signed,
oil on canvas,
75 x 49 cm
*Purchased from Sotheby's 16th June 1997,
Lot 365

£1,500 - £2,000



Lot 119



Lot 120

121

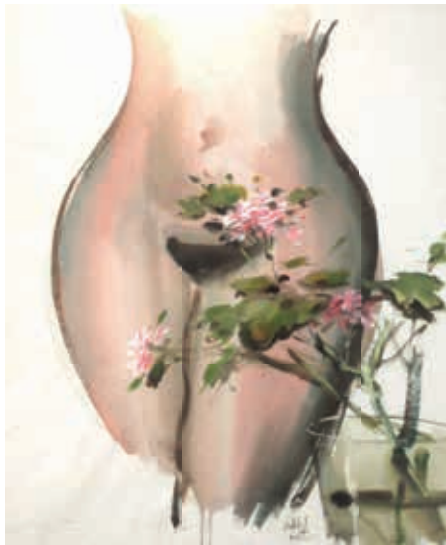
T. Read (20th Century),
a study of two dogs,
signed,
oil on canvas,
39 x 49 cm

£40 - £60

122

Edward (?)Aiten (19th Century School),
a landscape,
signed,
watercolour,
33 x 49 cm

£40 - £60



Lot 123

123

Hama (1950's Spanish School),
a partial portrait of a nude standing beside
flowers,
signed,
watercolour,
54 x 44 cm

£300 - £400

124

Thomas Taylor (exh. 1894-1921),
'Woodland Waters- a misty morning',
signed 'Taylor- Ireland',
dated 1917 verso,
watercolour, 32 x 51 cm

£80 - £120

125

Attributed to Peter Deakin, (1830-1899),
a landscape,
unsigned,
attribution verso,
watercolour,
80 x 45 cm *Exhibited at the Royal Academy

£100 - £200

126

Late 19th Century, a group of lacework including
a pair of collars and a pair of gloves, presented
in two frames, 40 x 64 and 30 x 52 cm

£40 - £60

**127**

After Pablo Picasso (1881-1973),
printed by C.F. Muller, Grobdruckerei und
Verlag GmbH, a 1972 calendar, each page
featuring a Picasso linocut, bearing the
printers label to the rear panel, deficient of
May and October

£500 - £800

128

Théophile Alexandre Steinlen
(French/Swiss, 1859-1923),
'Le Journal: La Traite des Blanches', colour
lithograph, 1899, printed by Charles Verneau, 68
x 58 cm (reduced) *This poster was advertising
the sensational novel 'White Slavery'. It depicts
a pimp with three of his victims, one is arguing
for her freedom, one has accepted her fate,
whilst one is in despair. This is an pre-censored,
smaller format version of the poster, identical to
the larger except bearing additional text on an
extended sofa and an additional frame to the
image. In later versions, Steinlen was obliged to
cover up the exposure.

£500 - £800

129

19th Century School,
 'Celeste',
 presumably the French actress and dancer
 Madame Celeste,
 dated 1876,
 pen and ink drawing,
 32 x 22 cm,
 together with three others depicting the same
 lady (4) £60 - £80

130

First World War,
 'Souvenir d'Arras',
 silk and lacework,
 73 x 73 cm £40 - £60

131

Circle of Franz Xaver Winterhalter (1805-73),
 a half-length portrait of a seated lady,
 oil on canvas,
 120 x 100 cm £500 - £800



Lot 135

132

After Thomas Kitchen (1719-1784),
 To the Right Honourable Francis
 Brook...
 A New and Accurate Map of
 Warwickshire...', hand-coloured
 engraved map,
 75 x 57 cm £150 - £200

133

First World War,
 Geographical Section, General Staff,
 No. 2364 Amiens Edition 2 Trench
 Map, War Office October 1915/
 Ordnance Survey 1916,
 70 x 85 cm £40 - £60

134

Leamington Sheet 7 street plan,
 'cholera map',
 printed by Vincent Brooks,
 linen backed,
 65 x 95 cm,
 together with a reproduction Index to
 Street Plan of the Parish of
 Leamington Priors, 1852 £60 - £80



Lot 136



Lot 131

135

19th century,
a portrait of a woman,
oil on canvas,
unsigned
41 cm x 35 cm

£80 - £120

136

18th century school,
a portrait of an elderly man,
oil on canvas,
unsigned, framed and glazed,
49 cm x 41 cm

£100 - £150



Lot 137

137

Late 19th century,
a portrait of a young woman,
watercolour,
unsigned,
framed and glazed,
48 cm x 41 cm

£80 - £120

138

Beatrice Parsons (1870-1955),
a Mediterranean coastal scene,
watercolour,
signed,
framed and glazed,
58 cm x 49 cm

£200 - £300

139

A pair of os maps of London,
eastern and western sheets,
with the 16th, 17th and 18th centuries
superimposed,
71 cm x 64 cm

£40 - £60

140 - 200

Spare Lots



Lot 138

CERAMICS, GLASS
& WORKS OF ART



CERAMICS, GLASS AND WORKS OF ART



201

Florence Barlow for Doulton Lambeth, a stoneware jug decorated with sgraffito scenes of meeting otters. h. 21.5 cm

£150 - £250

202

A pair of 19th century continental quatrefoil shaped vases having hand painted floral decoration and brass rims/bases. Marked 'Monte Carlo 2434' to bases. h. 22 cm

£30 - £50



Lot 203

203

A pair of late 19th century Coalport pin dishes decorated with highland scenes and mounted in fabric frames. w. 15 cm

£40 - £60

204

Two Wedgwood lustre bowls together with a Wedgwood lustre tyg, the pieces decorated with gilt painted motifs to include dragons, serpents, birds etc.

£50 - £80

205

A 19th century Chinese bottle vase, the flared rim over a shaped body decorated with traditional scenes in blue and white, six character mark to the base, h. 24 cm

£100 - £150



Lot 205

206

A 19th century Japanese gourd-shaped vase decorated with birds on a floral ground below four landscape panels, converted to a lamp with brass mounts, h. 29 cm

£40 - £60

207

A 19th century Chinese finger bowl decorated with fruits, bats characters, four character mark to the base, d. 13 cm.

£50 - £80



208

An early 20th century Chinese vase, the two decorative handles over a blue and white body decorated with typical scenes on a craquelure ground, within brown bands, character mark to base, h. 45 cm *£50 - £80*

209

A Meiji period Japanese Satsuma vase decorated with 'Thousand faces' decoration and dragon relief to top, together with a similarly decorated teapot having dragon spout and handle, character marks to bases. *£150 - £200*



Lot 212

214

A Poole Pottery raised charger, the red ground with orange, blue and green shapes, Poole label, d. 26 cm *£20 - £30*

215

A late 19th/early 20th century Royal Worcester blush ivory figure, h. 10 cm, together with a similar Worcester jug, 1048 *£30 - £40*

216

Clarice Cliff for Royal Staffordshire, 'The Biarritz' saucer of rectangular form decorated in the 'Coral Firs' pattern, 15 x 13 cm, together with a 'Canterbury Bells' plate for Newport Pottery and a scarlet flower bowl attributed to Clarice Cliff *£200 - £300*



Lot 210

210

A pair of Meiji period Japanese Satsuma vases decorated in the 'Thousand Faces' manner, character marks to bases, h. 15 cm *£80 - £120*

211

A Meiji period Japanese Satsuma four-sitting teaset decorated in the 'Thousand Faces' manner *£80 - £120*

212

A Japanese Satsuma ware vase of moon flask form, the circular body resting on a four-pillar base, h. 24 cm *£80 - £120*

213

A Royal Doulton figure 'The Cobbler' in green and blue robes, HN 542., h. 21 cm *£100 - £150*



Lot 216



217

A 19th century Chinese cabinet plate of unusual form, brightly decorated with butterflies and flowers, dia. 28 cm £70 - £100



219

A Chinese blue and white plate decorated with peacocks and figures together with one smaller plate depicting a vase. Kangxi period marks to backs, dia 26.5 cm £100 - £200



218

A near pair of 19th century Chinese blue and white vases decorated with scenes of children. Four character marks to bases, h. 25 cm £100 - £200

220

A 19th century Derby figure of a musician in resplendent attire. Factory mark to base, h. 21 cm £80 - £120

221

A 19th century Chelsea/Derby figure of a soldier with plumed helmet, shield and sword, h. 28 cm £70 - £100



Lot 221



222

A 19th century Derby style figure of a dancer in a floral dress, h. 21.5 cm *£100 - £150*

225

An Art Deco Goebel wall mask modelled as a profile of a girl with curled hair. Designed by Agnes Richardson, factory marks to back, l. 21 cm *£40 - £60*

226

A Clarice Cliff Celtic Harvest jug and footed bowl decorated with embossed wheat sheaf and fruit decoration on a cream ground, h. 29 cm *£50 - £80*

227

A large 19th century Japanese vase of ovoid form with fluted rim. Decorated in black, red and gilt with blue and white panels, A/F, h. 76 cm *£200 - £300*

Lot 227



223

Three large 19th century presentation loving cups decorated in red and green with gilt decoration. One cup relating to the 'Worcester Coursing Club 1872' *£50 - £80*

224

Hannah Barlow for Doulton Lambeth, a large stoneware baluster vase, decorated with scenes of cattle and goats. Dated 1880. H. 54.5 cm *£300 - £500*

Lot 224



Lot 225

228

A selection of Belleek tableware to include teapots, sugar bowl and milk jug and saucers. Black stamps to back. £60 - £80

229

A selection of Belleek and similar tableware to include pouring jugs, plates, cup and saucers. Various back stamps £50 - £80

230

Two Belleek comports, the upper dishes supported on shell design stems, extending from a base decorated with reliefs of horses and shell dishes. Black backstamps to bases £200 - £300



Lot 230

232

A pair of Art Nouveau red and green iridescent glass vases of flared bud shaped form, in the manner of Loetz, h. 34 cm £80 - £120

233

Four 19th glasses having etched and engraved foliate decoration, h. 18 cm £30 - £50

231

A late 19th century Royal Worcester tea set with pink and gilt decoration, comprising of a tea pot and coffee pot, toast rack, cups, saucers, bowls and a large serving tray mounted on a wooden base. £200 - £300



234

A large Caithness studio collection 'Tsarina' glass vase form decorated in mottled pink and red colours. Limited edition No.16/150, complete with box, h. 37 cm *£150 - £250*

235

A Victorian blue and clear glass epergne, the central trumpet rising from a fluted base surrounded by three twisted glass branches, each suspending a basket, h. 58 cm *£70 - £100*



236

A Victorian pink and green glass epergne, the central trumpet rising from a fluted base surrounded three smaller trumpets and three twisted glass branches, each suspending a basket, h. 58 cm *£100 - £150*

237

Philip Gibson for Moorcroft, an 'Indian Paintbrush' pattern vase of inverted baluster form. Signed and dated 2000 with original label to base, h. 22 cm *£150 - £200*

238

Philip Gibson for Moorcroft, a 'Simeon' pattern vase of bulbous form, decorated on a cream ground A/F, h. 24 cm *£70 - £100*

239

A Walter Moorcroft vase of baluster form, decorated in the 'Anemone' pattern on a green ground, h. 26 cm *£140 - £160*



Lot 239

240

Sally Tuffin for Moorcroft, a 'Rose Bud' pattern vase decorated on a woodsmoke ground. Limited edition no. 33/500. H. 28 cm *£120 - £180*

241

A small Moorcroft pot together with a baluster vase and pin tray, all decorated in the 'Hibiscus' pattern on a green ground, h. 12 cm *£100 - £150*

242

A 1991 Moorcroft year plate decorated in a rose pattern, limited edition 214/250, Dia. 21.5 cm *£30 - £40*

243

A 1993 Moorcroft year plate decorated in 'Dove' pattern, limited edition 81/500, dia 21.5 cm *£30 - £40*



Lot 244

244

Moorcroft for Liberty & Co, a squat green vase decorated with circular tubeline decoration, h. 8 cm *£30 - £50*

245

A small Moorcroft baluster vase decorated in the 'Pansy' pattern on a red ground, h. 9 cm.

£30 - £50

246

Sally Tuffin for Moorcroft, a large 'Temptations' pattern footed bowl decorated on a cream ground. Limited edition no. 239/500.

Dia 26.5 cm £80 - £120

247

Sally Tuffin for Moorcroft, a 'Penguin' pattern plate, 60/150, d. 26 cm £50 - £80

248

Three Moorcroft mugs decorated in the 'Plum (Silverline)', 'Rosehip' and 'Bramble' patterns on white grounds, h. 9 cm each £40 - £60

249

Two Moorcroft wall plaques of rectangular form decorated in the 'Clematis' and 'Anemone' patterns on blue grounds, 11.5 x 8 cm each *Purchased at the Moorcroft Collector's Club open day £30 - £50

250

A Moorcroft 'Clematis' pattern ashtray decorated on a blue ground. Dia 15 cm £20 - £40

251

A Moorcroft 'Pansy' pattern footed bowl, decorated on a woodsmoke ground, together with a lozenge shaped pin tray. Dia 9 cm £20 - £40

252

A Moorcroft 'Pansy' pattern footed bowl decorated on a deep blue ground together with a small Moorcroft 'Coral Hibiscus' pattern dish. £20 - £40

253

A small Moorcroft open vase decorated in the 'Hibiscus' pattern in pink and yellow on a white ground, h. 7 cm £20 - £30

254

A Moorcroft 'Rose' pattern covered bowl decorated on a deep blue ground. Limited edition no. 41/500. Dia 13 cm £40 - £60

255

A William Moorcroft 'Orchid' plate together with a 'Leaf and Berry' jug A/V £60 - £100

256 - 299

Spare Lots



Lot 300

300

Hattakitkosol Somchai (1934-2000), a pair of patinated bronze Koi Carp. h. 18 cm £100 - £200

301

A 19th century gilt bronze figural candle sconce modelled as cherub holding a flower on a white marble base. h. 51 cm £50 - £80

302 - 303

Spare Lots



Lot 304

304

A 19th century tooled leather cabinet housing the works of Walter Scott (1771-1832). The central door set with an oval panel depicting a girl and birds, flanked by shelves. Decorated in gilt and red livery and rams head masks to sides, resting on paw feet. h. 35 cm *£200 - £300*



Lot 305

305

A Chinese gilt bronze figure of Guanyin seated on a plinth holding a mirror. h. 17 cm *£70 - £100*

306

After Guillaume Coustou (1677-1746), a large cast metal figure of a Marly horse. h. 55 cm *£80 - £120*



Lot 307

307

In the manner of Jules Moigniez (1835-1894), a large bronze figure of a gun dog carrying a game bird in its mouth. h. 30 cm *£200 - £300*

308

A Chinese bronze koro standing on three supports with two handles. Pierced dragon decoration to lid, four character mark to base. dia. 9.5 cm *£80 - £120*

309

A contemporary Chinese carved stone seal with lion dog to top and character marks to body. h. 8 cm *£30 - £50*

310

An early 20th century coromandel walking stick with pool ball style handle and silver collar. Hallmarked for London, 1923. l. 88 cm *£50 - £80*

311

A late 19th century mother of pearl shell, carved in relief with religious scenes including the last supper and the nativity and interspaced with pierced scrolling decoration, l. 15.5 cm *£60 - £100*

312

A 19th century table snuff mull, the large cows horn supported and pivoting on a mythical creature base. Inscribed on the mount; 'Presented to R.G Fendick By Major & Mrs Uniacke Nov 1884'. H. 52 cm *£100 - £200*

313

A resin reproduction scrimshaw tusk depicting 'The Brunswick' and 'Admiral Howe', h. 13 cm *£20 - £30*

314

A collection of fifteen Parker, Sheaffer and Papermate pens and refills including a Parker '51' demi-fountain pen with a gold coloured lid, a Sheaffer Imperial Brass fountain pen etc. contained in a fitted two-drawer walnut finished collectors case *£100 - £200*

315

An early 20th century postcard album containing approximately 349 postcards including many of Vesta Tilley and other actresses *£150 - £200*



316

W.W Lloyd, 'On active service' 1890, A collection of Victorian chromolithographic prints depicting life in the army *£50 - £80*

317

Edward Lear, 'Views in Rome and its environs', 1841. A folio containing 25 lithographs of Rome, l. 56 cm, w. 38 cm *£1,500 - £2,000*

318

A possible 17th century continental carved walnut putto in a seated position, h. 52 cm *£150 - £250*

319

A bronze Greek plaque depicting a mother and her two children (possibly Medea), l. 35 cm, w. 29 cm *£70 - £100*



Lot 318

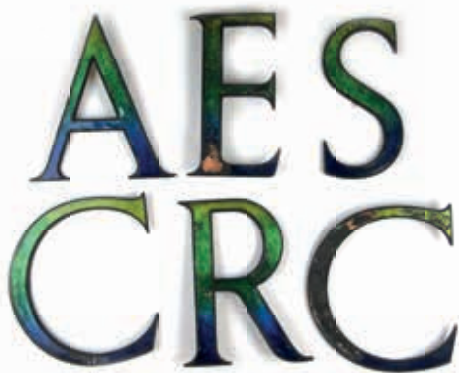


320

A large flag made from early 20th century silk military cigarette cards with central union jack, l. 150 cm, w. 140 cm *£100 - £150*

321

A late 19th/early 20th century Tibetan Thangka depicting the Buddha in the centre surrounded by other deities in a geometric pattern, l. 95 cm, w. 65 cm *£100 - £150*



Lot 322

322

Six industrial style metal and enamel letters 'C A R E C S' *£80 - £120*

323

A collection of WWI silk postcards, many being framed and glazed, together with a book on silk postcards, two WWI commemorative plates and two French documents. *£60 - £80*

324

A large tan leather travelling case by Finnigans of Manchester, having vanity compartment containing silver topped containers, brushes etc. Complete with outer cover and key. *£100 - £150*

325

A large Rhodesian carved soapstone rhinoceros with textured skin, h. 38 cm, l. 83 cm *£300 - £500*



Lot 326

326

A 1966-67 Tottenham Hotspur official handbook signed on the inside cover by the team in the year the club won the FA Cup *£70 - £100*

327

A gentleman's Dunn & Co grey silk hat together with a pair of gloves. Interior measurements 20.5 cm x 16.5 cm *£30 - £50*

328

A gentleman's Austin Reed black silk top hat. Interior measurements 20 cm x 16.5cm *£30 - £50*

329

A framed and glazed Bon Jovi memorabilia display consisting of a signed drum head, concert ticket and CD, together with one other signed drum head, pictures and COAs *£70 - £100*



330

A Webley & Scott Ltd Tempest 0.177 cal air pistol *£60 - £80*

Lot 325

331

A 1930s Zenit Em-ge 0.177 cal air pistol
£70 - £100



Lot 332

332

A late 19th century Colt 41 cal rimfire pocket pistol having nickel plated bronze frame, sheath trigger and rifled barrel. l. 12 cm £200 - £300



Lot 333

333

An early 19th century percussion pocket pistol having a turn off barrel and walnut stock. l. 18 cm £100 - £150



Lot 334

334

An early 19th century flintlock pistol bearing GR and crossed pike proof marks to barrel. l. 39 cm £200 - £300

335

A Victorian rosewood police truncheon having painted crown and cypher. Stamped '1773'. l. 44 cm £80 - £120

336

A British 1908 pattern cavalry trooper's sword. The single edged, fullered blade in metal scabbard and with official marks to ricasso. l. 110 cm £150 - £250

337

A French 1816 pattern infantry sword, the single edged curved blade housed in a brass and leather scabbard. l. 76 cm £70 - £100



Lot 338

338

Two 19th century Indian Tulwar swords of typical form with disc shaped pommels. Housed in leather scabbards. l. 93 cm £100 - £200

339

A British 1850 pattern regimental bandsman sword, the double edged blade housed in a leather and steel scabbard. The handle with a metal grip and trefoil quillons. l. 64 cm £100 - £150

340

A French 1875 pattern chassepot bayonet, the spine of the blade marked 'Mrs D Armes, St. Etienne Juliett 1875'. l. 71 cm £30 - £50

341

A British 1907 pattern bayonet with a single edged fullered blade. Housed in a leather and steel scabbard with canvas frog. l. 58 cm £30 - £50

342

A Japanese type 32 army sword, the single edged blade housed in a steel scabbard with suspension loop and retained by a sprung clip. l. 93 cm £120 - £180





Lot 344 (part)

343

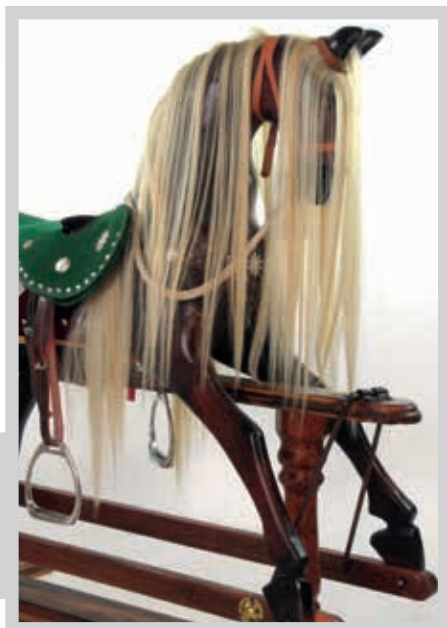
A 19th century bamboo sword stick with a curved handle and square tapering blade.
l. 86 cm £100 - £150

344

A WWII Royal artillery battledress and trousers belonging to Major R.F Hughes, R.A. Complete with Royal artillery shoulder titles and anti aircraft command insignia to upper arms and WWII and other medal ribbons on the left breast, including the Africa Star with 8th Army device and the War medal with mentioned in dispatches oak leaf. A letter to Major Hughes from a lieutenant colonel is also included with the uniform. Dated January 1945 £200 - £300

345

A refurbished early 20th century rocking horse on a pine rocker base with a jeweled green fabric saddle, hair mane and leather tack, h. 99 cm, l. 136 cm £250 - £350



Lot 343





Lot 346

346

Star War Collection: Palitoy 1982 Rebel Transport Vehicle, Palitoy 1982 Scout Walker Vehicle, Kenner 1996 Hans Solo 7 Luke Skywalker in Stormtrooper Gear, Kenner 1996 Rebel Blockade Runner, Kenner 1982 Radar Laser Cannon, Kenner 1982 Tri-pod Laser Cannon, Kenner 1983 AST-5 Armoured Sentinel Transport Vehicle, Kenner 1983 ISP-6 Imperial Shuttle Pod Vehicle *£120 - £180*

347

A bisque headed child's doll having original dress consisting of needlework cap, satin apron and edged felt dress, h. 35 cm *£30 - £50*

348

A Meccano No.7 green chest with a quantity of parts along with a wooden chest of Meccano parts and magazines *£200 - £300*



349 - 399

Spare Lots

SILVER AND PLATE



SILVER AND PLATE

400

A silver plated double inkwell desk set with pierced ivy leaf decoration and vacant cartouche. Makers mark for Barker Ellis. l. 23.5 cm *£40 - £60*

401

A pair of old Sheffield plate candlesticks having tapering stems and embossed scrolling decoration. h. 27 cm *£30 - £50*



402

A Victorian silver plated muffin warmer modelled as a clam shell on branch supports. h.24 cm *£80 - £120*

403

A silver plated spoon warmer modelled as a conch shell by James Dixon & Sons. h. 10 cm *£70 - £100*



Lot 403

404 - 410

Spare Lots

411

A large silver presentation cigarette box having engine turned decoration to top. Hallmarked for London, 1935. Approx weight 982g *£80 - £120*

412

A three piece silver condiment set together with a cigarette case. Various hallmarks. Approx weight 272g *£60 - £80*

413

A silver sugar caster of octagonal form, hallmarked for Birmingham, 1930. Approx weight 132g *£30 - £40*

414

A silver cigarette box together with three silver and white metal napkin rings. Various hallmarks. Approx weight 325g *£40 - £60*

415

A George VI silver teapot of squat form. Hallmarked for Birmingham, 1945. Approx weight 632g *£150 - £200*

416

A Victorian silver hot water pot with fluted base and embossed ribbon design. Hallmarked for London, 1896. Approx weight 388g *£100 - £150*

417

A large silver sauce boat of conventional form with hoof feet and scroll handle. Approx weight 180g *£40 - £60*



Lot 415

418

A George V silver card tray of quatrefoil form. Hallmarked for Birmingham, 1915. Approx weight 254g *£60 - £80*

419

A Walker and Hall silver comport together with an octagonal silver bud vase. Approx weight 228g *£50 - £80*

420

An Edwardian silver tea caddy by Walker and Hall. Hallmarked for Sheffield, 1907. Approx weight 145g *£70 - £100*



Lot 421

421

A Victorian silver spiral fluted hot chocolate pot of small proportions. Hallmarked for London, 1890. Approx weight 118g *£60 - £100*



Lot 416

422

A George III silver sugar basket together with a matching cream jug. Hallmarked for London, 1799. Approx weight 394g *£120 - £180*

423

A George III silver navette shaped card tray having engraved leaf border. Hallmarked for London, 1798. Approx weight 98g *£60 - £80*

424

A George VI silver sauce boat of conventional form. Hallmarked for Sheffield, 1939. Approx weight 106g *£20 - £30*



Lot 425

425

An Edwardian silver embossed trinket box. Hallmarked for Birmingham, 1903. Approx weight 86g *£50 - £80*

426

An Art Deco silver salt and pepper set of tapering form together with a contemporary silver and cut glass pepper mill. Various hallmarks *£40 - £60*

427

A silver embossed trinket box of rectangular form together with one smaller example on raised feet. Various hallmarks. Approx weight 135g *£50 - £80*

428

A selection of silver items to include a coin purse, jewellery stand, polishing stand and an Edwardian novelty pig pin cushion A/F. Various hallmarks. Approx weight 169g *£70 - £100*



Lot 422

429

Three salt and pepper pots together with one mustard pot A/F. Various hallmarks. £30 - £40

430

A silver trophy together with pair of miniature shell tongs and a Scottish silver brooch. Various hallmarks. Approx weight 70g £20 - £30

431

An assortment of silver items to include, an Art Deco silver cup, a pair of Victorian salt and pepper pots, an egg cup and three napkin rings. Various hallmarks. Approx weight 212g £50 - £80

432

An Elizabeth II silver condiment set comprising of pepper pot, open salt pot and mustard pot with plated spoon. Approx weight 173g £40 - £60

433

A silver sugar bowl A/F together with three assorted silver napkin rings. Various hallmarks. Approx weight 132g £30 - £40

434

A Victorian silver card case having engraved leaf decoration. Hallmarked for Birmingham, 1888. l. 7.5 cm A/F £40 - £60

435

An Edwardian silver photo frame having an embossed floral border together with one smaller frame. Hallmarked for Birmingham 1903 & 1906. h. 9 cm £30 - £50



Lot 435

436

A George IV silver vinaigrette of rectangular form having a chased floral border enclosing central monogram. The lift up lid revealing a gilt interior with pierced grill. Hallmarked for Birmingham, 1825. Makers mark Nathaniel Mills. l. 3 cm



Lot 436

£100 - £150



Lot 437

437

A George III silver vinaigrette of circular form having engraved simplistic decoration. Hallmarked for Birmingham, 1800. d. 2.1 cm A/F £60 - £80

438

A George V silver vesta case of simple form. Hallmarked for Birmingham, 1925. l. 5.4 cm £20 - £30

439

Two George III silver berry spoons with embossed decoration to bowls and engraving to stems. Hallmarked for London, 1797 & 1800. Approx weight 112g £50 - £80



Lot 439

440

A cased set of six silver teaspoons with crossed golf clubs for handles. Hallmarked for Sheffield, 1933. Approx weight 83g £20 - £30

441

A George V silver dressing set consisting of tray, and three brushes. Hallmarked for Birmingham, 1924. Approx weight 692g £100 - £150

442

A cased silver serving set consisting of one long fork and six cake forks. Hallmarked for Birmingham, 1936. Approx weight 118g

£30 - £50

443

A set of eight Victorian silver table spoons. Hallmarked for Sheffield, 1888. Approx weight 409g

£80 - £120

444

A George III silver basting spoon together with three George III silver serving spoons. Various hallmarks. Approx weight 265g

£80 - £120

445

A William IV silver caddy spoon having fluted handle and engraved bowl, together with a pair of Georgian silver sugar tongs with pierced decoration. Approx weight 44g

£30 - £50

446

An assortment of silver flatware to include a pair of George III kings pattern Scottish silver ladles, pusher spoon, tongs etc. Various hallmarks. Approx weight 195g

£50 - £80

447

A cased set of Victorian silver teaspoons with scalloped bowls together with a set of George VI silver tea spoons. Approx weight 127g

£50 - £80

448

Eleven continental white metal table spoons marked '800'. Approx weight 420g

£70 - £100

449

A case containing seven silver and white metal collectors spoons. Approx weight 105g

£20 - £30

450

An assortment of silver flatware to include Victorian silver bladed table knives, a pair of Victorian serving spoons, salt spoons etc. Various hallmarks. Approx weight 470g

£120 - £180

451

A pair of contemporary silver salts together with two spirit labels. Various hallmarks.

Approx weight 90g

£30 - £50



Lot 452

452

A large early 20th century silver dressing table mirror having an Art Nouveau style silver frame enclosing a bevelled glass plate. h. 34cm

£70 - £100

453

A George VI silver salver of circular form supported on shell feet. Hallmarked for Birmingham, 1941. Approx weight 340g

£80 - £120

Lot 453





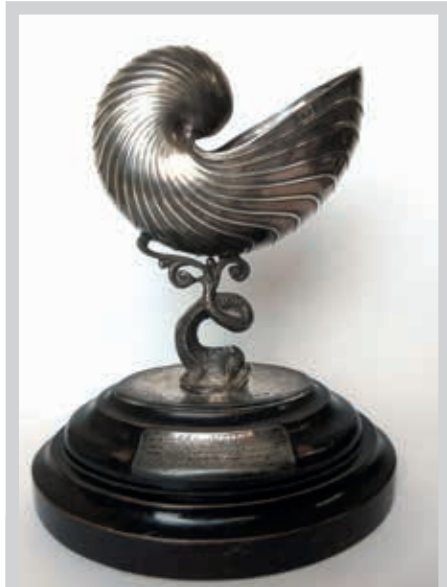
Lot 454

456

A Queen Elizabeth II silver card tray with piecrust border and shell feet. In presentation box. Hallmarked for Sheffield, 1986. Approx weight 176g £50 - £80

454

A George III silver teapot of oval form, having engraved entwining boarders and foliate decoration. Hallmarked for London, 1798. Approx weight 466g £180 - £250



455

A large Victorian silver nautilus spoon warmer, the shell supported by coiled fish on an ebonised wooden base. Hallmarked for Birmingham, 1891. Makers mark T.W. h. 24 cm £400 - £600



Lot 457

457

An Victorian silver claret jug having a scrolling handled, embossed floral decoration and vacant cartoches above a hobnail cut glass body. Hallmarked for Birmingham, 1900. h. 28.5 cm £200 - £300



Lot 458

458

An Edwardian silver presentation cigar box complete with cigars, gold plated cigar cutter and scissors. Hallmarked for London, 1906.

£100 - £150

459

A silver sugar caster hallmarked for Birmingham, 1967. Approx weight 129g

£30 - £50

460

Spare Lot

461

An Edwardian silver card case with engraved floral motifs and scrolling borders. Hallmarked for Birmingham, 1903. l. 9.5 cm

£50 - £80



Lot 461

462

A contemporary silver fronted desk clock together with a combined silver photo frame and clock A/V

£30 - £50

463

An Edwardian silver trinket box pin cushion with engraved festoon decoration. Hallmarked for Birmingham, 1905. Approx weight 155g

£30 - £40

464

A George V silver sauce boat of conventional form together with one smaller example. Hallmarked for Birmingham, 1933. Approx weight 199g

£40 - £60

465

A pair of Victorian silver pierced heart shaped bon bon dishes together with a tea strainer. Various hallmarks. Approx weight 73g

£40 - £60

466

An Elizabeth II combined silver cigar cutter and pen knife together with a guilloche enamel cigarette case. Various hallmarks. Approx weight 138g

£30 - £50



Lot 466

467

Three large pairs of Georgian sugar tongs together with two small pairs of sugar tongs. Various hallmarks. Approx weight 122g

£50 - £80

468

Five pairs of Georgian silver sugar tongs having bright cut decoration. Makers marks Peter and Ann Bateman etc. Various date marks. Approx weight 160g

£100 - £150

469

Eight pairs of Georgian silver sugar tongs having bright cut decoration. Various date marks and makers to include Charles Hancock etc. Approx weight 259g

£160 - £200

470

A selection of Georgian silver spoons to include serving spoons, table spoons etc. Various hallmarks. Approx weight 513g

£180 - £220

471

A George V silver tea set of circular form. Hallmarked for Birmingham, 1932. Approx weight 652g

£200 - £250



Lot 471

472

A pair of Elizabeth II silver wine coasters with gadrooned rim decoration and wooden bases. Hallmarked for London, 1964. d. 15 cm

£50 - £80

473

A cased silver three piece condiment set. Hallmarked for London, 1901. Makers mark for the Gold and Silversmiths Company Ltd. Approx weight 117g

£40 - £60



Lot 474

474

A George III silver porringer having gadrooned decoration and vacant cartouche. Hallmarked for London 1773. Approx weight 144g

£150 - £200



Lot 476

475

A George III silver cream jug having embossed berry decoration and bun feet. Hallmarked for London, 1806. Approx weight 143g

£50 - £80

476

An early 20th century novelty silver pin cushion modelled as a bird. Makers mark for Sampson Mordan & Co. h. 4 cm

£80 - £120

Lot 490



490

A white metal teapot of squat form with embossed naturalistic decoration. Approx weight 399g

£80 - £120

491

A white metal cigarette box, the lid featuring a relief of an eastern deity. Marked 'Sterling' to base. Approx weight 272g

£40 - £60



492

A 19th century Chinese export silver tankard, the cylindrical body with vacant cartouche amidst ornately chased figures engaging in leisure activities. The handle modelled as a four claw dragon. Makers mark to base. Approx weight 212g. h. 10.5 cm

£300 - £400

493

A pair of 20th century Chinese cast white metal bowls, decorated with immortals and character marks to the outside. Marks to base. dia. 10.5 cm

£100 - £150

494

Three possible Chinese white metal one dollar coins dated 1910 and 1911 (2).

£40 - £60

495

A possible 1921 Chinese one dollar coin in PCGS slab.

£30 - £50

496 - 499

Spare Lots

JEWELLERY & WATCHES



JEWELLERY AND WATCHES

500

A 22ct gold bloodstone seal ring with carved lady's head intaglio. Approx weight 3g

£100 - £150



Lot 501

501

An 18ct white gold diamond cluster ring set with 0.25ct of stones in a flowerhead setting. Approx weight 2g

£150 - £200



Lot 502

502

An 18ct yellow gold and platinum diamond solitaire ring, the round cut stone approximately 0.33ct.

£200 - £250



Lot 503

503

An 18ct yellow gold diamond trilogy ring, the three stones totaling approximately 0.2ct in an illusion setting. Approx weight 2.6g

£100 - £150

504

An 18ct yellow gold gentlemen's ring having 17 old cut stones in an unusual setting. Approx weight 7.5g

£150 - £200



Lot 504



505

An 18ct white gold apatite and diamond ring set with 2.00ct of round cut apatite with 0.18ct diamond cluster shoulders. Approx weight 3.6g

£120 - £180

506

A 14ct white gold tanzanite and diamond ring together with a 9ct white gold tourmaline and diamond ring, a 9ct yellow metal emerald and diamond ring and one other 9ct gold ring.

Approx weight 10.2g £100 - £150

507

A 9ct yellow gold topaz and diamond ring together with a similar smoky quartz and diamond ring, a 9ct white gold and emerald ring and one other ring. Approx weight 13.2g

£100 - £150



508

A 9ct yellow gold college ring with central cabochon ruby and engraved shoulders. Approx weight 5.6g

£60 - £80

Lot 508

509

A 9ct gold amethyst and opal ring, the stones in a navette shaped setting. Approx weight 2.9g

£60 - £80



Lot 509

510

A group of nine rings consisting of two 14ct dress rings, five 9ct gold rings and two yellow metal rings. Various styles and stones. Approx weight 21.9g *£200 - £300*

511

A 9ct gold amethyst crossover ring together with two 9ct gold green stone cluster rings and a palladium band. Approx weight 7.8g *£80 - £120*

512

A group of five 9ct gold rings to include spinel eternity ring, wishbone ring, buckle ring etc. Approx weight 10.9g *£100 - £150*

513

An 18ct yellow gold diamond cluster ring with a flower head setting, together with a matching yellow metal diamond pendant. Approx weight 7.7g. *£150 - £200*

514

A 22ct gold wedding ring together with a 9ct gold signet ring A/F. Approx weights 2.8g & 3.7g *£80 - £120*

515

A group of eleven silver dress rings to include garnet and amethyst cluster rings etc. *£50 - £80*

516

An assortment of 9ct gold and yellow metal items to include ladies watches, earrings, necklace etc. Approx weight 49.7g *£200 - £300*

517

An assortment of silver and white metal jewellery to include necklaces, bracelets, brooches, pendants etc. Approx weight 200g *£60 - £100*

518

A Victorian yellow metal hairwork mourning brooch together with a 9ct gold gatelink bracelet, suspending one charm and a 9ct gold chain. Approx weight 30.5g *£180 - £220*

519

An assortment of 9ct gold and yellow metal earrings. Approx weight 13.5g *£100 - £150*



Lot 520

520

A pair of 9ct gold hoop earrings having a textured finish, together with a pair of yellow metal amethyst dropper earrings. Approx weight 3.9g *£40 - £60*

521

An assortment of 9ct gold and yellow metal items to include mainly earrings. Approx weight 8g *£70 - £100*



Lot 522

522

An 18ct yellow gold diamond solitaire ring, the approximately 0.5ct stone in a gypsy style setting. Approx weight 6.2g *£200 - £300*



Lot 523

523

An 18ct yellow gold diamond cluster ring. Approx weight 3.1g *£80 - £120*

524

A group of four rings to include a 9ct gold lapis lazuli ring, a 9ct gold rhodonite ring, a yellow metal diamond crossover ring and one other 9ct ring. Approx weight 22.4g *£180 - £220*

525

A late Victorian 18ct yellow gold ruby and diamond ring. Approx weight 4g *£100 - £150*

526

A Victorian 18ct yellow gold turquoise ring. Approx weight 3.2g *£60 - £80*

527

A 9ct gold oversized clear stone ring together with a 9ct gold wedding band and a 9ct gold diamond and sapphire ring A/F. Approx weight 15.5g *£50 - £80*



Lot 528

528

A 9ct gold five bar gate link bracelet with padlock clasp and safety chain. Approx weight 20.6g *£180 - £220*

529

A 9ct gold Victorian pearl and turquoise brooch together with a yellow metal pendant and a base metal agate cabochon brooch *£50 - £80*

530

A 9ct gold fancy link bracelet with cross motifs. Approx weight 31.6g *£350 - £400*

531

A 9ct gold three bar gate link bracelet together with a 9ct yellow and white gold twist link chain and a yellow metal coral cameo bar brooch. Approx weight 13.7g *£100 - £150*



Lot 530



532

A 9ct gold Victorian locket with cast foliate edging and engine turned decoration together with a 9ct rose gold chain. Approx weight 10.4g *£100 - £150*

533

A Victorian 9ct gold amethyst pendant, the single hexagonal stone suspended from a fancy link chain. Approx weight 10.1g *£150 - £200*

534

A large 9ct gold mounted micro-mosaic brooch depicting a cherub riding a chariot. w. 6.5 cm. *£300 - £500*

535

A 15ct gold spider pendant set with blue topaz and seed pearl. Approx weight 3.1g. l. 2.5 cm. *£60 - £90*



Lot 536



Lot 534

540

A 9ct gold belcher link necklace having two wavy sections. Approx weight 12.2g *£140 - £180*

541

A 9ct gold flat link chain. Approx weight 9.9g *£120 - £160*

542

A 9ct gold guard chain A/F suspending a 9ct gold crucifix together with a selection of other yellow metal items. Approx weight 23.3g *£180 - £220*

543

A faceted red bakelite bead necklace together with a pair of matching earrings and similar red bead necklace. *£40 - £60*

536

A 9ct gold Masonic fan fob with engraved and pierced Masonic symbols. Approx weight 3.8g *£60 - £80*



Lot 537

537

A pair of 9ct gold cufflinks with engraved scrolling foliate decoration. Approx weight 8g *£80 - £120*

538

An Edwardian yellow metal carved shell cameo brooch depicting a lady playing a lyre. Approx weight 11.4g *£40 - £60*

539

A 9ct rose gold belcher link necklace. Approx weight 33.6g *£280 - £350*

Lot 533



544

A quantity of late 19th/early 20th century jet items to include bead work, necklaces, clips etc.
£40 - £60

545

A Georgian yellow metal pendant with both sides painted in sepia on ivory, depicting a harbour/river scene. l. 3.5 cm
£70 - £100

546

A yellow metal belcher link chain suspending a mounted 1912 sovereign and a 22ct gold wedding band. Approx weight 25.9g
£280 - £350



Lot 545

547

A Edward VII half sovereign dated 1907, mounted in a 9ct gold mount on a yellow metal chain. Approx weight 6.6g
£100 - £150

548

A Edward VII half sovereign dated 1903
£80 - £120

549

A Edward VII full sovereign dated 1910
£180 - £220

550

A Queen Victoria full sovereign dated 1900
£180 - £220

551

A Waltham Mass open faced silver pocket watch having Roman numerals and seconds sub dial to face. Hallmarked for Birmingham 1897
£70 - £100

552

A large open faced silver pocket watch by John Forest of London, having a white metal engraved dial and a key wound fusee movement. Hallmarked for Chester 1900. d. 5.5 cm
£80 - £120



Lot 556

553

A rolled gold Elgin open faced pocket watch having foliate decoration to case and a seconds sub dial.
£30 - £50

554

An early 20th century full hunter base metal pocket watch, the case engraved with rural scenes.
£70 - £100



555

A J.W Benson open faced silver pocket watch. Complete with original presentation case and a George V silver jubilee medal £70 - £100



556

An 18ct gold open face pocket watch having a key wound movement and seconds sub dial. Approx weight 85g £200 - £300

557

An 18ct gold half hunter pocket chronograph. Centre seconds with Roman numerals and 1/5 second markings. Hallmarked for London, 1914. Approx weight 100.8g £500 - £800

558

A continental 18ct gold fob watch, the yellow metal dial having Roman numerals and central engraving. Dia 3.8cm £150 - £200



Lot 559

559

A continental 14ct gold fob watch, the case with vacant cartouche amidst engraved foliate decoration. Approche weight 28.7g £100 - £150



Lot 557



Lot 560

560

A ladies Catorex pendant watch, the slide out case mounted on a yellow metal chain with tassel. £20 - £30

561

A 14ct gold Zenith wrist watch retailed by S.A.B Bangkok together with a continental silver engraved fob watch and a yellow metal ladies wrist watch £100 - £150

562

A gents 9ct gold cushion shaped watch having seconds sub dial and Roman numerals to face £50 - £80

563

A ladies Omega cocktail watch having 14ct gold filled case, a manual winding movement and baton markers to dial. Complete with booklet. £30 - £50

564

Three 9ct gold cased ladies watches £40 - £60

565

A ladies yellow metal Rotary wristwatch £20 - £30

566

A gents 9ct gold Smiths Everest automatic wristwatch, the white dial having Arabic numerals and baton markers. £150 - £250



Lot 567

567

An 18ct gold and platinum diamond solitaire ring with an approximately 0.3ct stone in an eight claw setting. £100 - £150



Lot 566

568

A Victorian 18ct yellow gold, diamond and sapphire ring. Hallmarked for Chester, 1897. Approx weight 3.7g *£80 - £120*



Lot 569

569

An early 20th century 18ct gold and platinum five stone diamond ring, set with five old cut graduating diamonds totaling approximately 1.50ct. *£1,000 - £1,500*

570

An 18ct gold diamond and sapphire ring A/F together with a 9ct gold band ring. Approx weight 12.3g *£140 - £180*

571

A selection of five 9ct yellow and white gold dress rings set with various stones to include amethyst, diamonds, tanzanite etc. Approx weight 17.6g *£180 - £220*

572

A selection of five 9ct yellow and white gold dress rings set with various stones to include garnets, diamonds, tourmaline etc. Approx weight 13.9g *£150 - £180*

573

A selection of five 9ct yellow gold and silver dress rings set with various stones to include CZ, tanzanite etc. Approx weight 11.1g *£100 - £150*

574

A late 19th century yellow metal ruby and diamond ring, the central ruby (approximately 1ct) flanked by two approximately 0.5ct diamonds and interspaced with diamond chips. Inscribed inside the shank: 'L.P from W.T 1893' *£800 - £1,200*



Lot 574

575

An 18ct gold sapphire and diamond cluster ring, the octagon cut sapphire surrounded by ten round cut diamonds. Together with a similar diamond and sapphire stacking ring. Approx weight 6.1g *£200 - £300*

576

A 9ct gold garnet ring together with a 9ct gold band ring and a yellow metal diamond and sapphire crossover ring. Approx weight 8.1g *£70 - £100*

577

A 22ct gold wedding band. Approx weight 5g *£180 - £220*

578

A Victorian yellow metal seed pearl crescent brooch together with a 15ct gold Art Nouveau garnet and seed pearl brooch, a 9ct gold amethyst brooch and a 9ct gold RAF sweetheart brooch. Approx weight 10.8g *£100 - £150*

579

A 9ct gold amethyst and seed pearl brooch together with a pale blue topaz and seed pearl brooch A/F and one other. Approx weight 6g *£50 - £80*

580

A 9ct gold Victorian blue paste and diamond brooch together with a 9ct gold blue paste and seed pearl brooch. Approx weight 5.3g *£60 - £80*

581

A 9ct gold carved shell cameo brooch together with a Victorian yellow metal and diamond circular brooch and a 9ct gold amethyst bar brooch. Approx weight 17.7g *£80 - £120*

582

An assortment of 9ct gold and yellow metal items to include a fancy link bracelet and chains, earrings, rings etc. Approx weight 50g *£400 - £500*



Lot 575



583

An assortment of 9ct gold and yellow metal items to include bracelets, earrings, crucifix, ring, brooches etc. Approx weight 38.6g
£300 - £400

584

A selection of yellow metal and gold items to include 18ct gold diamond studs, yellow metal and enamel lockets, 22ct gold band ring, 9ct gold cased watch etc. Approx weight 40g
£250 - £350



Lot 586

585

Two 19th century rolled gold seal fobs together with two pocket watch keys and a magnifier
£50 - £80

586

A 9ct gold and enamel brooch modelled as two birds. Approx weight 8.7g
£100 - £150

587

A 9ct rose gold bracelet suspending a 22ct gold Ghana two pound gold coin in a yellow metal mount. Approx weight 35.9g
£400 - £600

Lot 587

588

An assortment of 9ct gold and yellow metal items to include a figaro link necklace, flat link necklace and a bracelet. Approx weight 29g
£200 - £300



589

A 9ct gold garnet ring together with a 9ct gold and silver eternity ring and a 9ct gold cased watch.
£40 - £60

590

A Victorian 15ct gold diamond brooch together with a pair of yellow metal green stone earrings, a pair of 9ct gold dropper earrings and a string of pearls A/F
£150 - £250



591

A cased silver and guilloche enamel buckle and stud set. Hallmarked for Birmingham, 1911
£60 - £100

592

A modernist style white metal necklace marked 'Mexico 950' together with a silver collar necklace.
£20 - £40

593

A 935 silver fob watch on guard chain, together with a silver locket with floral decoration, a silver amethyst brooch and a silver belcher chain.
£50 - £80

594

A yellow metal cased men's J.W Benson wristwatch in original box
£80 - £120

595

A yellow metal cased men's Certina wristwatch with seconds sub dial and Arabic numeral markers.
£70 - £90

596

A 9ct gold agate ring. Approx weight 5.9g
£50 - £80



Lot 597

597

An 18ct gold diamond three stone ring, the 0.10ct central stone flanked by two smaller diamonds. Approx weight 2.2g
£50 - £80

598

A 9ct gold diamond solitaire pendant together with a diamond and sapphire cluster pendant, an amethyst pendant and a 9ct gold sapphire and CZ ring. Approx weight 6g
£50 - £80



Lot 599

599

An 18ct yellow gold diamond solitaire ring, the approximately 0.5ct stone in a six claw setting
£200 - £300

600

A green jade bangle, internal d. 5.9 cm
£150 - £200



Lot 595



Lot 603

601

A green jade bangle, internal d. 5.8 cm
£150 - £200

602

A green jade bangle, internal d. 5.6 cm
£150 - £200

603

A green and brown jade bangle, internal d. 5.5 cm
£150 - £200

604

A green jade bangle, internal d. 5.9 cm
£150 - £200

605

A pale green jade bangle, internal d. 5.5 cm
£150 - £200

606

A green jade bangle, internal d. 5.6 cm
£150 - £200

607

A dark green jade bangle, internal d. 6.1 cm
£50 - £100

608

A dark green jade bangle, internal d. 5.9 cm
£50 - £100

609

A dark green jade bangle, internal d. 5.8 cm
£50 - £100



Lot 594

610

A dark green jade bangle, internal d. 5.8 cm
£50 - £100

611

A dark green jade bangle, internal d. 6.4 cm
£50 - £100

612

A dark green jade bangle, internal d. 5.9 cm
£50 - £100

613

Two pale green jade beaded necklaces together
with one other set of beads £80 - £120

614

Fourteen agate pendants £50 - £100

615

Ten pale jade pendants in various forms
£50 - £100



Lot 618

618

A 9ct gold emerald and diamond brooch in the
form of a snake. Approx weight 5.9g
£150 - £250

616

A Mathey-Tissot Edmond automatic
wristwatch having an open escapement and
inspection back. Complete with box, additional
strap, pen and paperwork. Limited edition
122/150 £200 - £300



Lot 617

617

A yellow metal turquoise pendant, the central
stone surrounded by a ring of CZ stones.
Approx weight 14g £100 - £150

619

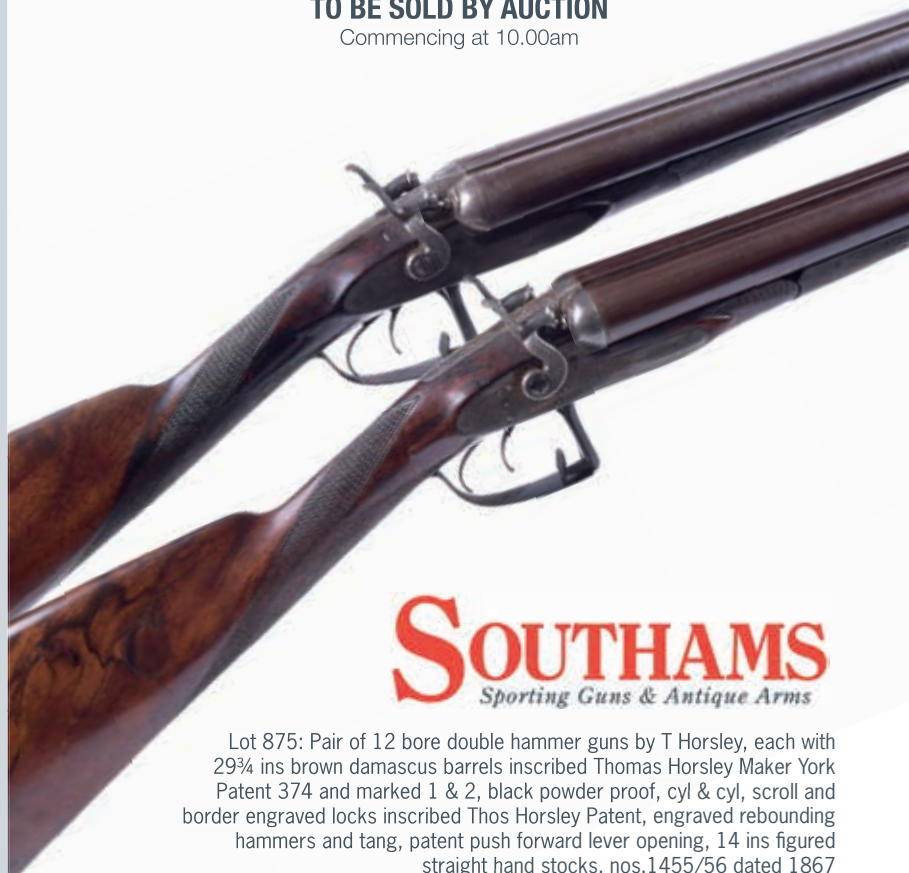
A Gucci 9000L stainless steel ladies watch
having date aperture at 6 o'clock £30 - £50

W&H PEACOCK
AUCTIONEERS & VALUERS

Thursday 13th December
Sporting Guns, & Antique Arms

TO BE SOLD BY AUCTION

Commencing at 10.00am



SOUTHAMS
Sporting Guns & Antique Arms

Lot 875: Pair of 12 bore double hammer guns by T Horsley, each with 29¾ ins brown damascus barrels inscribed Thomas Horsley Maker York Patent 374 and marked 1 & 2, black powder proof, cyl & cyl, scroll and border engraved locks inscribed Thos Horsley Patent, engraved rebounding hammers and tang, patent push forward lever opening, 14 ins figured straight hand stocks, nos.1455/56 dated 1867

Estimate £2,000 - £3,000

Bedford Auction Centre Eastcotts Park, Wallis Way, Bedford, Bedfordshire MK42 0PE
01234 266 366 or guns@peacockauction.co.uk

peacockauction.co.uk



LOCKE & ENGLAND
AUCTIONEERS & VALUERS

LEAMINGTON SPA AUCTION CENTRE

Tuesday 29th January 2019
Valuation Day

Commencing 12 noon - 4pm



Our specialist team of valuers are happy to advise on all antique/collectable and jewellery items, for which no appointment is necessary.

Clients are invited to bring along items for complimentary auction advice without obligation. For larger items, we are happy to visit your home. – just call to make an appointment.

Entries currently invited for our specialist sales of Antiques, Jewellery, Books & Ephemera, Mid Century Design, Militaria, Wines & Spirits, Collectable Toys.

AUCTION ENTRIES INVITED

Leamington Spa Auction Centre 12 Guy Street, Leamington Spa, CV32 4RT
01926 889 100 or valuers@leauction.co.uk

www.leauction.co.uk

HAMMER PRICES - SEPTEMBER 2018

1	£600	60	£170	182	£30	277	£50	401	£15	506	£65	614	£110
2	£340	61	£110	187	£30	278	£30	402	£50	507	£40	615	£400
3	£55	62	£100	188	£30	280	£15	403	£150	508	£30	616	£50
4	£150	63	£100	199	£120	281	£15	404	£150	509	£70	617	£110
5	£65	64	£40	201	£40	282	£15	405	£170	510	£75	618	£30
6	£100	65	£85	203	£50	283	£18	406	£140	511	£80	619	£30
7	£100	66	£210	204	£140	284	£22	407	£160	512	£75	620	£26
8	£130	67	£170	206	£10	285	£18	408	£55	513	£30	621	£45
9	£340	68	£100	208	£270	286	£15	409	£100	514	£20	622	£55
10	£170	70	£150	209	£90	287	£40	410	£95	515	£120	623	£10
11	£150	71	£45	210	£240	290	£8	411	£80	516	£50	624	£5
12	£230	72	£30	211	£80	291	£30	412	£40	517	£40	625	£20
13	£100	74	£150	214	£40	292	£30	413	£70	518	£45	626	£75
14	£50	75	£320	215	£40	300	£100	414	£25	519	£55	627	£14
15	£170	76	£100	216	£50	301	£170	415	£40	520	£60	628	£26
16	£80	77	£65	218	£22	302	£200	416	£95	521	£45	629	£14
17	£85	78	£850	220	£90	304	£290	417	£130	522	£40	630	£20
18	£100	79	£80	221	£50	305	£150	419	£60	523	£60	631	£10
19	£150	80	£160	222	£70	306	£180	420	£25	524	£60	632	£220
20	£300	81	£75	223	£15	307	£50	421	£18	525	£60	634	£120
22	£90	82	£200	224	£45	308	£80	422	£170	526	£60	635	£10
23	£35	83	£150	225	£60	310	£210	423	£160	527	£140	636	£65
24	£600	84	£550	226	£45	311	£40	424	£160	528	£190	637	£65
25	£150	85	£190	227	£35	312	£40	425	£120	529	£30	638	£65
26	£22	86	£150	228	£85	313	£180	426	£70	530	£45	639	£30
27	£50	87	£240	229	£580	314	£150	427	£160	531	£140	640	£80
28	£130	88	£65	230	£300	315	£40	428	£65	532	£25	641	£18
29	£40	89	£110	231	£140	317	£250	429	£56	533	£150	642	£50
30	£170	90	£60	232	£2300	318	£50	430	£45	534	£190	643	£40
31A	£90	91	£700	233	£100	319	£35	431	£55	535	£170	644	£20
32	£95	93	£50	234	£24	320	£20	432	£60	536	£300	645	£40
33	£150	95	£40	236	£8	321	£40	433	£80	537	£20	646	£75
34	£70	97	£130	237	£8	322	£55	434	£60	538	£85	647	£22
35	£50	147	£300	238	£6	323	£70	435	£55	539	£180	648	£50
36	£180	148	£300	239	£40	324	£45	436	£25	540	£180	649	£150
37	£170	149	£320	251	£50	325	£35	437	£45	541	£100	650	£35
38	£320	152	£50	252	£45	326	£65	438	£30	542	£90	651	£18
39	£120	154	£70	253	£50	327	£80	439	£110	543	£95	652	£100
40	£100	158	£140	254	£75	328	£170	440	£45	544	£90	653	£22
41	£250	159	£1500	255	£65	329	£35	441	£65	545	£95	654	£30
42	£260	160	£560	257	£30	330	£190	442	£28	546	£130	655	£30
43	£75	161	£50	258	£30	332	£35	443	£130	547	£80	656	£22
44	£80	162	£85	259	£40	333	£130	444	£180	548	£210	657	£26
45	£130	164	£110	260	£100	334	£40	445	£90	549	£60	658	£10
46	£110	165	£20	261	£26	335	£480	447	£65	550	£30	659	£170
47	£300	166	£15	262	£50	336	£45	448	£160	551	£120	660	£65
48	£700	167	£20	263	£50	337	£200	449	£50	601	£40	662	£100
49	£50	168	£80	264	£120	338	£50	450	£50	603	£20	663	£45
50	£120	169	£210	265	£80	339	£40	451	£75	604	£16	664	£10
51	£180	170	£110	266	£180	340	£65	452	£120	605	£85	665	£10
52	£190	171	£80	267	£60	341	£18	453	£40	607	£160	666	£80
53	£290	172	£55	268	£30	343	£30	500	£60	608	£85	667	£30
54	£440	173	£220	270	£260	344	£80	501	£70	609	£340	668	£10
56	£120	175	£50	271	£80	345	£130	502	£25	610	£50	669	£130
57	£40	177	£40	273	£20	346	£1200	503	£85	611	£420	671	£40
58	£600	180	£45	274	£50	347	£15	504	£40	612	£26	672	£40
59	£50	181	£240	275	£26	400	£40	505	£80	613	£100		

W&H PEACOCK
AUCTIONEERS & VALUERS

TO BE SOLD BY AUCTION

Friday 7th December
Jewellery & Watches

Commencing at 4pm



To include a range of antique & modern watches, rings, sovereigns, bracelets, brooches, pendants and necklaces, etc.

VIEWING

Friday 30th November – 9am to 8pm,
Saturday 1st December – 9am to 4pm,
Thursday 6th December – 9am to 6pm,
Morning of sale from 9am

AUCTION ENTRIES INVITED

Bedford Auction Centre

Eastcotts Park, Wallis Way, Bedford, Bedfordshire MK42 0PE
01234 266 366 or jewellery@peacockauction.co.uk

peacockauction.co.uk

ENTRIES NOW INVITED

For our next specialist auction of Antiques and Collectable's at the Leamington Spa Auction Centre

AUCTION Highlights



A WWII era British air crew Observer parachute and harness. Named to T.Perks, stamped with air ministry marks.

Sold for £1200



An early 19th century mahogany bergere chair upholstered in a white gold button back fabric on turned and reeded front legs with brass castors, h. 97 cm, w. 66 cm, d. 83 cm

Sold for £600

Terms used in this catalogue have the following meanings.

Please note that all statements in this catalogue, regarding authorship, attribution, origin, date, age, provenance and condition are statements of opinion and are not treated as a statement of fact.

1. A N ARTIST

In our opinion, the work is by the artist.

2. ATTRIBUTED TO A N ARTIST

In our opinion, the work is of the period of the artist which may be whole or in part the work of the artist.

3. STUDIO, (CIRCLE OR WORKSHOP) OF A N ARTIST

In our opinion, the work is of the period and closely relates to his style.

4. SCHOOL OF A N ARTIST

In our opinion, the work is by a pupil or a follower of the artist.

5. MANNER OF A N ARTIST

In our opinion, the work is in the style of the artist and is of a later period.

6. AFTER A N ARTIST

In our opinion, this work is a copy of the artist.

7. ASCRIBED TO A N ARTIST

In our opinion, this work is not by the artist, however, previous scholarship has noted this to be a work by the artist.

8. SIGNED (OR DATED)

The work has a signature (or date) which is in our opinion is genuine.

9. BEARS SIGNATURE (OR DATE)

The work has a signature (or date) which in our opinion is not authentic.

Notes
