

Intelligent Step & Repeat for Cartons and Labels

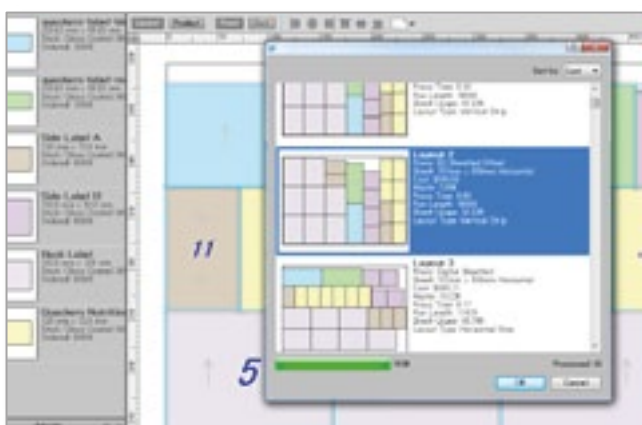


TILIA LABS
Phoenix

Phoenix is built from the ground up help you **reduce costs** and **eliminate errors** with a wide array of intuitive, **automated** tools that together provide an unprecedented level of **efficiency and control**. Optimize your layouts based on up-to-date, **accurate cost analysis** or let Phoenix do the work for you with powerful new **auto ganging** tools. Phoenix sports a simple, modern interface designed to run fast on both **Mac** and **Windows**.

With a single click the new **Auto Layout** module will **generate multiple optimized layouts** for you to choose from based on your current product list, press and stock.

Sort your results by cost or waste and quickly review other metrics such as **run length** and **time estimates**. Make adjustments to your layouts by modifying **product spacing** and **gutters**.



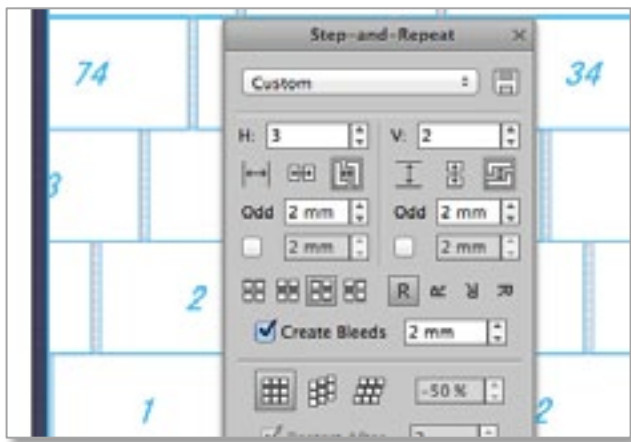
Go even further and let Phoenix find the **lowest cost layouts** across **hundreds of press / sheet combinations** in seconds using the new **Auto Optimize** module.

Click on a result to instantly apply **the most cost effective press, sheet size and product layout combination** available. Auto Optimize utilizes press and product constraints, avoiding non-printable results to **eliminate layout errors**.

Build complete CAD layouts in a flash by simply dropping your CFF2, DXF or DDES CAD files and **auto snapping** artwork into place.

Phoenix goes beyond other solutions, using an advanced set of heuristics to determine **perfect artwork – die placement** without user input and **fixing several common problems** like incorrect rotation, and non-centered artwork.



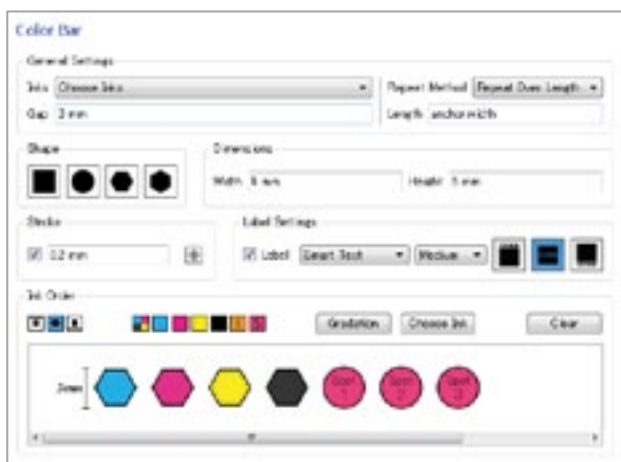


Optimize sheet coverage when stepping up labels and cartons with the **Step & Repeat Tool** by using the powerful **Auto Fill** feature to cover your entire printable area. For cylindrical plates, dies are wrapped optimally across plate boundaries.

Control precisely how labels are distributed with a wide array of options and let Phoenix do the work of **generating perfect bleeds**.

Phoenix makes it very easy to **step up irregular label and carton shapes**. Get started by defining your label or carton die shape from inks in your artwork.

Next, use **Smart Gaps®** to enter minimum distances between dies and Phoenix does the rest, **instantly computing the correct layout**. Export your new die layout as CFF2, PDF, or PS.

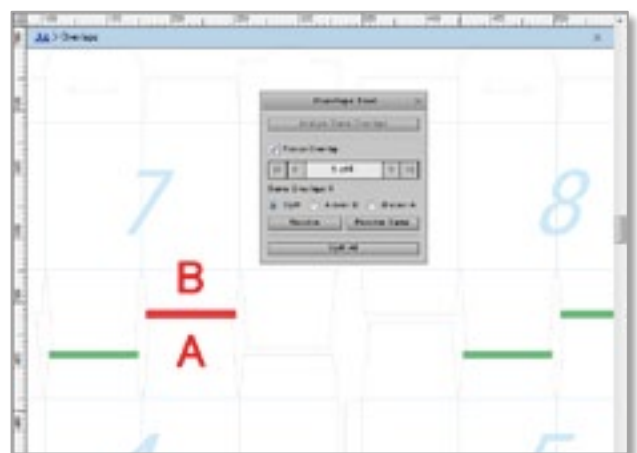


Create rich, intelligent marks using Phoenix's industry-leading marks system. Choose from ten categories and hundreds of options to build marks that adapt to ink changes, knock out die areas, utilize over 200 dynamic keywords, resize based on layout changes, and more.

Create and edit your marks with ease using the intuitive **Mark Creator Wizard**.

Utilize **Overlaps Tool**, **Product View**, **Output Preview** and a host of other smart tools to get your layout ready for print.

When you're done, **Export your job as an imposed PDF, JDF, or PostScript** to import into virtually any workflow system. Phoenix optimizes output to reduce export size and increase speed at the RIP.



Phoenix Editions and Modules

	Phoenix Carton	Phoenix Label	Phoenix Pro
Die Import (CFF2, DDES2/3, DXF)	♦		♦
Die Import Wizard	♦		♦
Step-and-Repeat Tool		♦	♦
Cost Analysis	♦	♦	♦
PDF Export	♦	♦	♦
PostScript Export	♦	♦	♦
JDF Export	♦	♦	♦
Smart Marks	♦	♦	♦
Double Sided Jobs	♦	♦	♦
Adobe PDF Library Preview	♦	♦	♦
Overprint Preview	♦	♦	♦
Overlaps Tool	♦	♦	♦
Auto Snap	♦	♦	♦
Job Templates	♦	♦	♦
Die Export (PDF, PostScript, CFF2)	♦	♦	♦
Press Library	♦	♦	♦
Stock Library	♦	♦	♦
Plates Library	♦	♦	♦
Marks Library	♦	♦	♦
Mark Sets Library	♦	♦	♦
Auto Layout Module	optional	optional	♦
Auto Optimize Module	optional	optional	optional

System Requirements

Macintosh	Windows
<ul style="list-style-type: none"> • OS X 10.5+ • X86 32-bit or 64-bit compatible (Intel/AMD) CPU. Dual-core processor or higher is strongly recommended • Minimum 1GB RAM. 4GB RAM is recommended • 4GB free space is required • 1024 x 768 or higher • Java 	<ul style="list-style-type: none"> • Windows XP SP2/SP3, Windows Vista, Windows 7, Windows 8 all editions • X86 32-bit or 64-bit compatible (Intel/AMD) CPU. Dual-core processor or higher is strongly recommended • Minimum 1GB RAM. 4GB RAM is recommended • 4GB free space is required • 1024 x 768 or higher



207 Bank Street, Suite 454
Ottawa ON K2P 2N2
Canada

Email info@tilialabs.com

Web: tilialabs.com