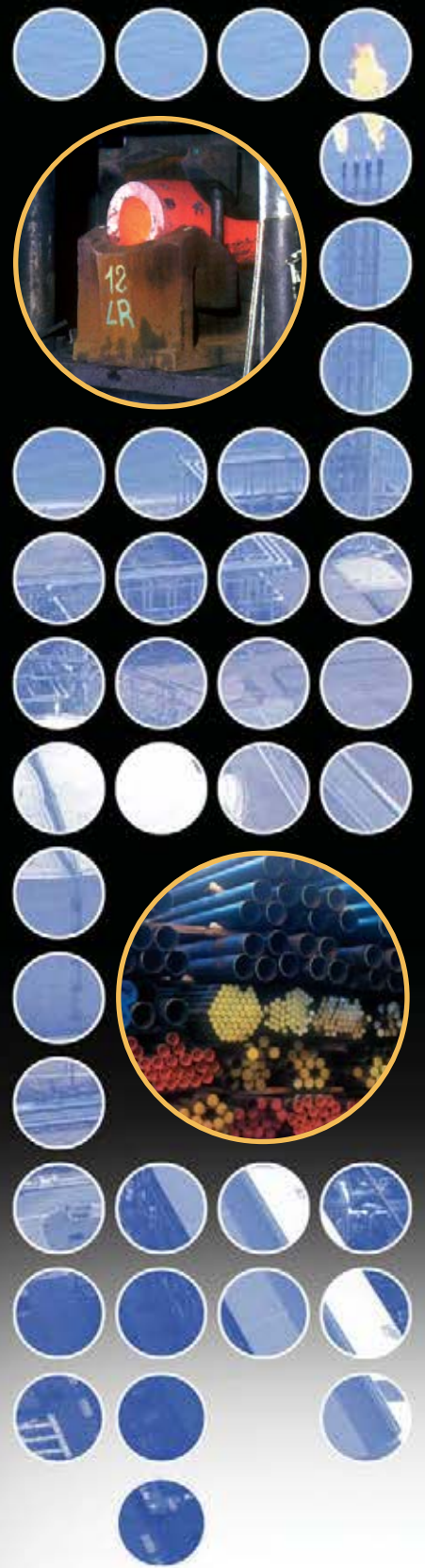


FULL SUPPLY LTD



SUPPLIER OF PIPELINE COMPONENTS

Company Profile

Full Supply Ltd is fully approved and registered by Lloyd's Register Quality Assurance to BS EN ISO 9001:2000. The company has brought together considerable expertise and experience in the field of pipe and piping components to meet your requirements. We continue to service and supply the oil, gas, filtration, refrigeration, refining, petrochemical and offshore industries, on a global scale.

From our base in the heart of England, UK, we are able to supply pipes, fittings, flanges, valves and other consumables in all dimensions, tolerances, and specifications. We pride ourselves in our ability to put together packages to meet your individual requirements; no order is too small or unusual for us to consider.

Company Mission

The policy of Full Supply Ltd is to be the leader in supplying products and customer satisfaction while continuing to maintain a service that represents quality.

We achieve this through continuous improvement of all aspects of the business, by working closely with our customers.



Approval Certificate No. LRQ 0963101



Reg No. 10050073

P I P E

Seamless, EFW, ERW,
DSAW and Forged.

Sizes available:
1/8" through to 64" Nominal Bore.

Wall thickness:
1mm through to 4".

Material Grades

Stainless Steel

A312 304/L, 310, 316/L, 321/H, 347/H,
410, 440, 904L.

Carbon Steel

A106Gr.B/C, API 5L Gr.B.

Low Temperature

ASTM A333Gr.6/3.

Alloy Steel

A335 P1, P5, P9, P11, P12, P22, P91.

High Yield

API 5L X42, 52, 60, 65, 70.

Duplex & Super Duplex

UNS S31254, UNS S31803, UNS
S32760.

Nickel Alloys

200, 400, K500, 600, 625, 800, 825.

Alloys

ALLOY 20, ALLOY C, ALLOY C276,
ALLOY B2.

Aluminium

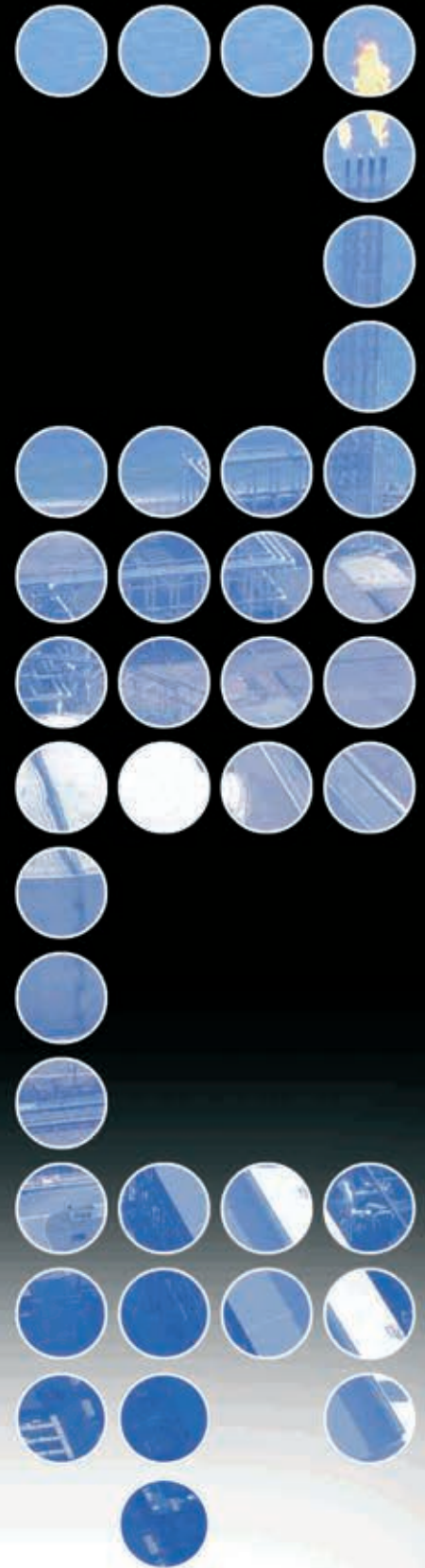
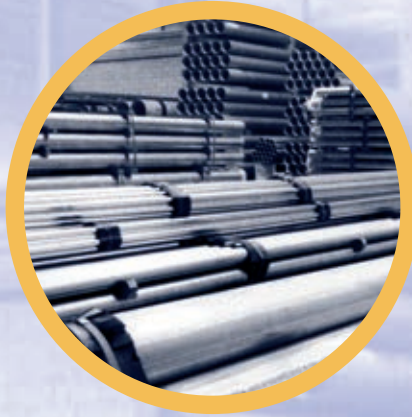
5083, 5154, 5251, 6061, 6063, 6082.

Unusual Grades

Bronze, Brass, Copper, Cupro Nickel,
Titanium.

Dimensions

All pipe is made and controlled to the
relevant standards such as:
ASME, ASTM, BS,
DIN/WERKSTOFFE.



P I P E

FLANGES

Sizes available:

1/4" through to any size.

Wall Thickness:

Schedule 5s through to Schedule XXS and heavier.

Dimensions/Pressure

Ratings:

- ANSI, MSS- SP-44, BS3293, API 605
150lb through to 2500lb

Flange Facings:

- Raised Face, Ring Type Joint, Large Tongue & Groove, Small Tongue & Groove
- BS4504 – PN6, 10, 16, 25 & 64
- BS10 – Table D, E, F & H
- DIN Standards

Special items according to customer drawings.

Stainless Steel

A182 F304/L, F310, F316/L, F321/H, F347/H, F410, F440, 904L

Carbon Steel

A105, C22.8

Low Temperature Steel

A350, LF2, LF3, LF6



Alloy Steel

A182 F1, F5, F9, F11, F12, F22, F91

High Yield

A694 F42, F52, F60, F65, F70

Duplex & Super Duplex

A182 F51, F44, UNS S32760

Nickel Alloys

200, 400, K500, 600, 625, 800, 825

Alloys

ALLOY 20, ALLOY C, ALLOY C276, ALLOY B2

Aluminium

5083, 5154, 5251, 6061, 6063, 6082

Unusual Grades

Bronze, Brass, Copper, Cupro Nickel, Titanium

All flanges are made and controlled to the relevant standards such as:
ASME, ASTM, BS and DIN/WERKSTOFFE.



FLANGES

BUTTWELD FITTINGS



Sizes available:
1/4" through to any size

Wall Thickness:
Schedule 5s through to Schedule XXS and heavier.

Dimensions:
• BS 1640/ANSI - ASME B16.9 - B16.28 - B16.25
Seamless, EFW, ERW, DSAW and Forged



Stainless Steel
A403 304/L, 310, 316/L, 321/H, 347/H, 410, 440, 904L

Carbon Steel
A234 WPB, WPC

Low Temperature Steel
A420 WPL6, WPL3



Alloy Steel
A234 WP1, WP5, WP9, WP11, WP12, WP22, WP91

High Yield
WPHY42, 52, 60, 65, 70



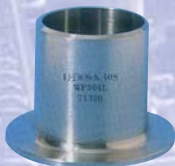
Duplex & Super Duplex
A815 UNS31803, UNS31254, UNS S32760

Nickel Alloys
200, 400, K500, 600, 625, 800, 825

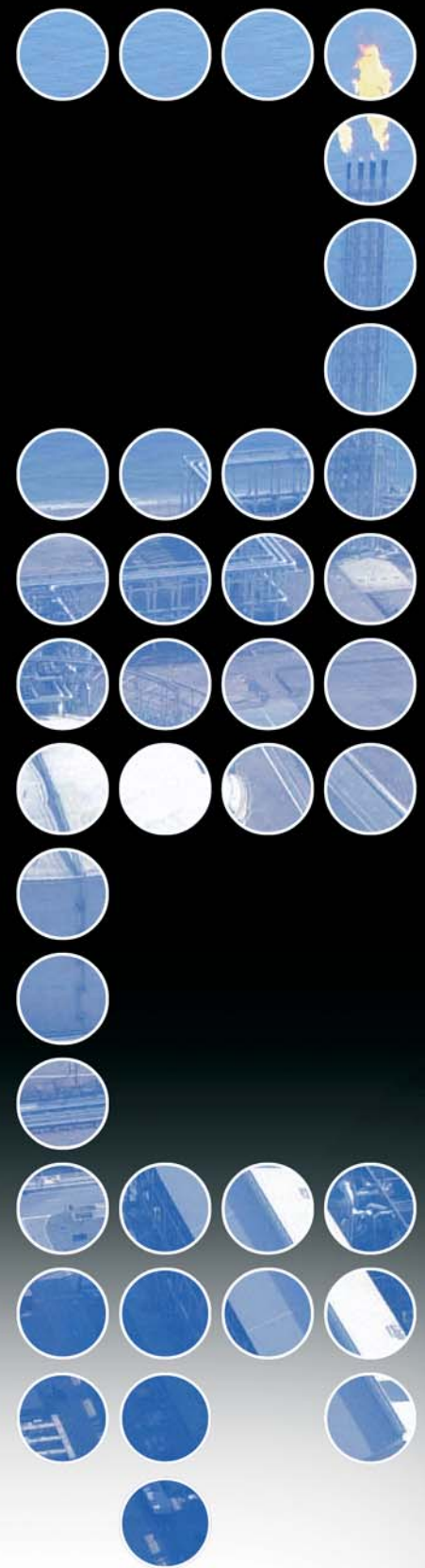
Alloys
ALLOY 20, ALLOY C, ALLOY C276, ALLOY B2

Aluminium
5083, 5154, 5251, 6061, 6063, 6082

Unusual Grades
Bronze, Brass, Copper, Cupro Nickel, Titanium



All pipe fittings are made and controlled to the relevant standards such as:
ASME, ASTM, BS, DIN/WERKSTOFFE.



BUTTWELD FITTINGS

S C R E W E D A N D S O C K E T W E L D

Elbows, Tees, Crosses,
Couplings, Caps, Unions,
Plugs, Bushes, Nipples,
Swages.

Sizes available:
1/8" through to 4"

Dimensions/Pressure Ratings:

- 1 BS3799 and ANSI B16.11
- 1 3000lb through to 9000lb
- 1 Sch 10s through to Sch XXS and heavier.

Reinforced Branch Outlets.

- Sizes available:**
1/4" through to 24"
- 1 Dimensions to manufacturers standards
 - 1 Sch 10s through to Sch XXS and heavier.

Special fittings according to customer drawings.

Material Grades

Stainless Steel

A182 F304/L, F310, F316/L, F321/H, F347/H, F410, F440, 904L

Carbon Steel

A105

Low Temperature Steel

A350, LF2, LF3, LF6

Alloy Steel

A182 F1, F5, F9, F11, F12, F22, F91

High Yield

A694 F42, F52, F60, F65, F70

Duplex & Super Duplex

A182 F51, F44, UNS S32760

Nickel Alloys

200, 400, K500, 600, 625, 800, 825

Alloys

ALLOY 20, ALLOY C, ALLOY C276, ALLOY B2

Aluminium

5083, 5154, 5251, 6061, 6063, 6082

Unusual Grades

Bronze, Brass, Copper, Cupro Nickel, Titanium

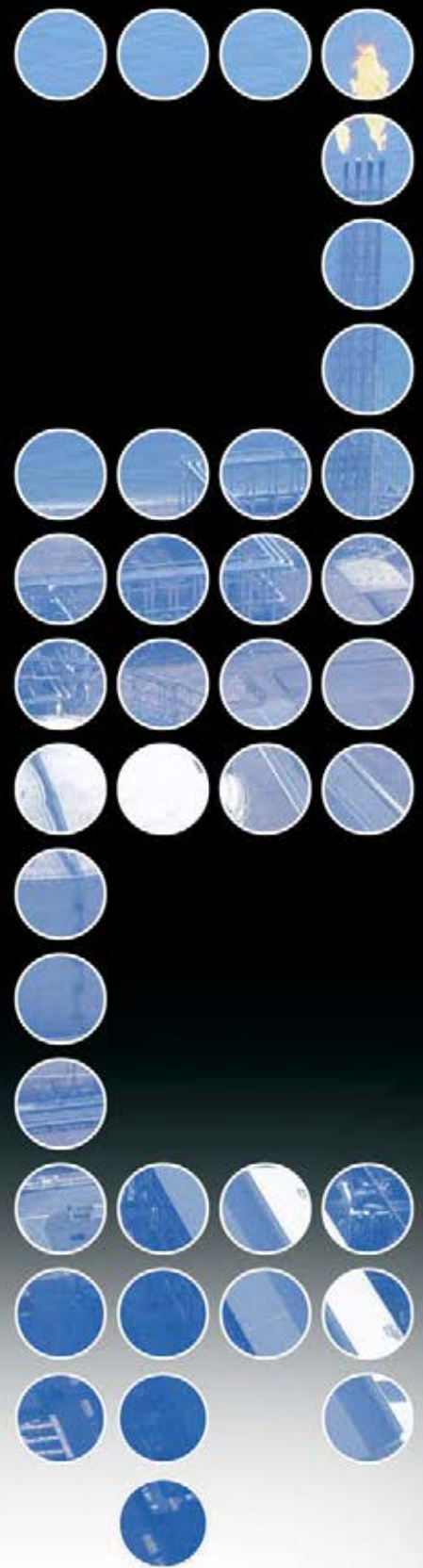
Dimensions

All fittings are made and controlled to the relevant standards such as: ASME, ASTM, BS and DIN/WERKSTOFFE.



S C R E W E D &
S O C K E T W E L D

VALVES



Sizes available:
3/8" through to 24"

Pressure Ratings:
Ball, Check, Globe: 150lb through to 2500lb
Butterfly: 150lb and 300lb

ASTM A105

F5 – A182 F5 5CR-• MO

F9 – A182 F9 9CR-• MO

F11 – A182 F11 1• CR-• MO

F22 – A182 F22 2• CR-• MO

LF2 – A350 LF2

304 – A182 F304 SS+F304L

316 – A182 F316 SS+F316L

Alloy 20 – B462-NO8020

321 – A182 F321

347 – A182 F347

304 – A744 GR CF8

304L – A744 GR CF3

316 – A744 GR CF8M

316L – A744 GR CF3M

Alloy 20 – A744 GR CN7M



Monel – A494 GR M35-1

Hastelloy B – A494 GR N12MV

Hastelloy C – A494 GR CW12MW

Inconel – A494 GR CY40

Incoloy – 800H-A494-CT15C

Nickel – A494 GR CZ100

317 – A744 GR CG8M

347 – A744 GR CF8C

Zirconium

Titanium – B367-69 GR C3

Duplex – A744 CD4MCU

ASTM A216-WCB

ASTM A217-WC6

ASTM A217-WC9

ASTM A217-C5

ASTM A352-C12

ASTM A352-LCB

ASTM A352-LCC

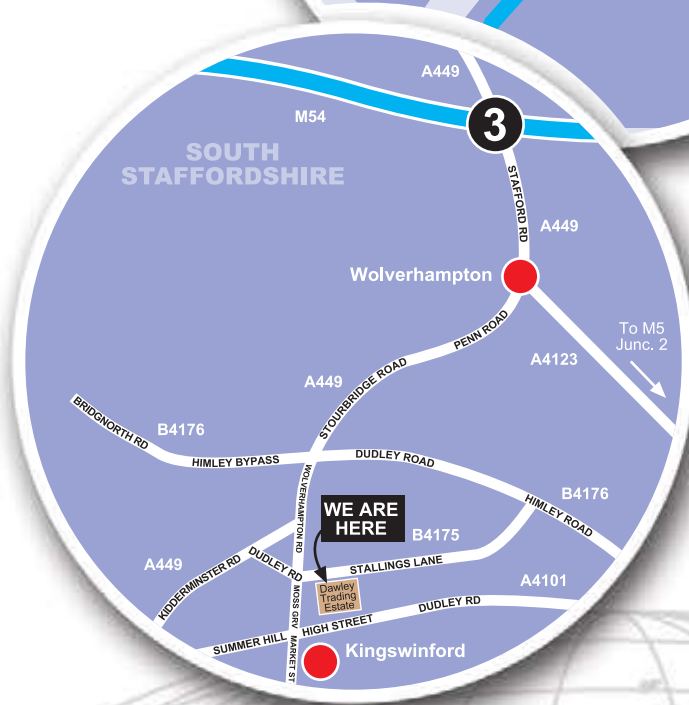
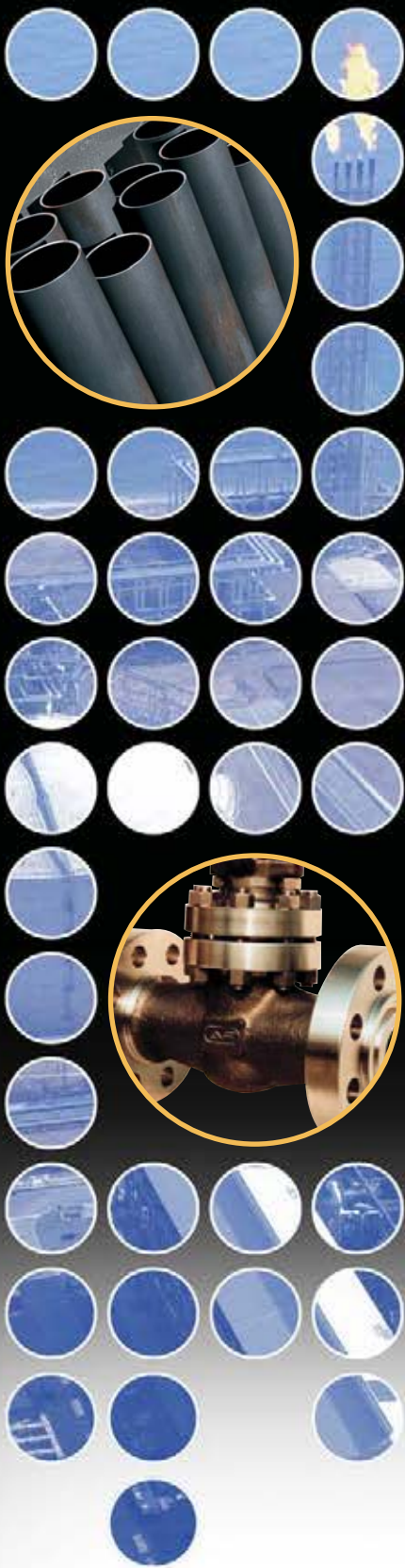
Bronze

Iron



All valves are made and controlled to the relevant standards such as: ASME, ASTM, BS and DIN/WERKSTOFFE.

VALVES



Approval Certificate No. LRQ 0963101



Reg No. 10050073

FULL SUPPLY LTD

Unit 20A • Dawley Trading Estate
Stallings Lane • Kingswinford
West Midlands • DY6 7AP
England • United Kingdom

Tel: +44 (0) 1384 402 101
Fax: +44 (0) 1384 402 501
Email: sales@fullsupply.co.uk

www.fullsupply.co.uk



SUPPLIER OF PIPELINE COMPONENTS