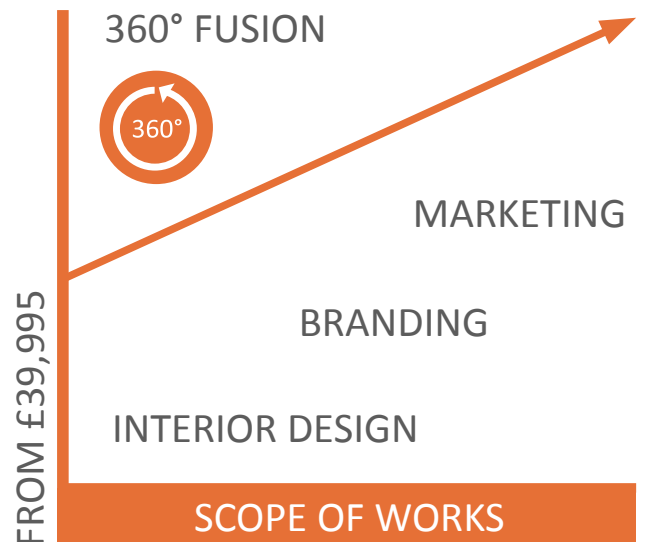
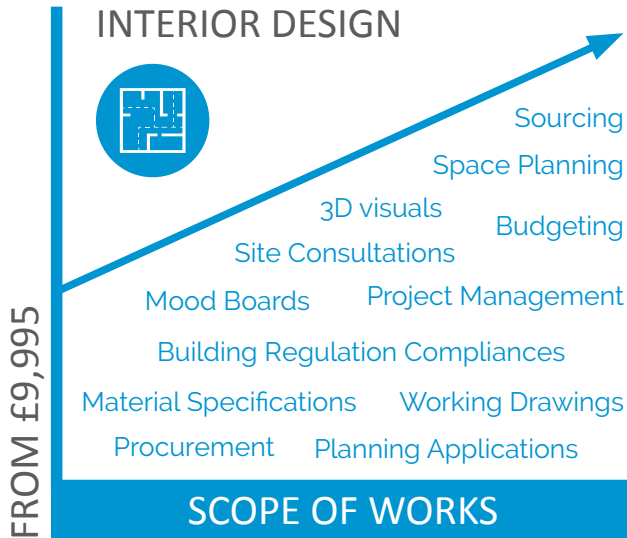


BESPOKE PRICING

(for projects over £100,000)

We appreciate that no two projects are the same and our prices are as individual to us, as your project is to you.



All prices stated above are exclusive of VAT and are subject to scope and scale of works required.

[VIEW OUR PORTFOLIO](#)

[CONTACT US NOW](#)

INDIVIDUAL SERVICES: FIXED FEE PACKAGES

(for projects under £100,000)



Interior Design Package

£4,995.00

- Site survey and consultation.
- Concept stage meeting to include electronic mood board presentation.
- Space plan options to include furniture, toilets and back of house layout.
- Presentation board to include samples and or images of proposed finishes.
- Electronic presentation board.
- Specifications for proposed finishes for furniture, lighting, flooring, decorating, bespoke joinery and accessories.
- Fully itemised quotation for proposed FF&E.
- Up to three 2D and or 3D Visuals of key areas of design.



Branding Package

£4,995.00

- Logo creation and or development.
- Print ready designs for up to 7 items: Logo, Stationery, Up to 7 Page Website, Signage, Menu, Menu Display, Leaflet, Flyer, Banner, Poster, POS, Price List, Packaging, Labels & Loyalty Card, Staff Uniform.
- Up to 3 concepts per item above.
- Excludes prints.
- Includes website development.
- Includes advertising local authority permission where applicable but excludes fees to council. Subject to council approval.



Fit Out Drawing Package

£2,495.00

- Existing space drawings.
- Proposed drawings in line with agreed final designs for all relevant trades including electrics, flooring, decorating, plumbing, joinery & non structural construction. Excludes drawings for specialist trades such as mechanical, Fire, CCTV & music systems.
- Liaison with relevant local authorities such as building control for approval of planned interior works. Excludes fees for local authority, building control officer, CDM Co-ordinator, architects & structural engineer and provided they are from our nominated list.
- Tendering out the works to nominated contractors for costing.
- Providing a fixed price & itemised quotation for project to include contractor works and fixtures, fittings and equipment cost.



Marketing Package

£1,495.00 PER MONTH

- Social media strategy.
- Relaunch event.
- Graphic design.
- Website copy and maintenance.
- Photography and video.
- Online directory registrations.
- Minimum budget required. Fee above covers our time in implementing all of the above works but is exclusive of all relevant third party charges.

All prices stated above are exclusive of VAT and are subject to scope and scale of works required.

[VIEW OUR PORTFOLIO](#)

[CONTACT US NOW](#)

360° FUSION: FIXED FEE PACKAGE

(for projects under £100,000)



All prices stated above are exclusive of VAT and are subject to scope and scale of works required.

[VIEW OUR PORTFOLIO](#)

[CONTACT US NOW](#)

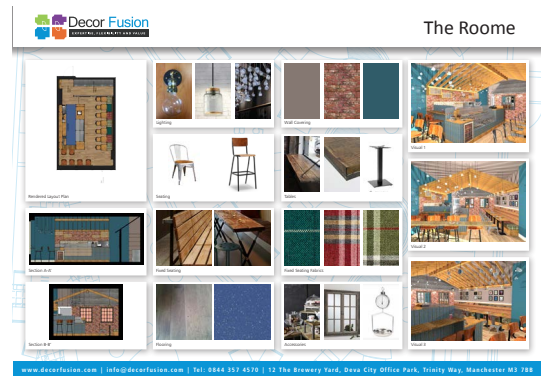
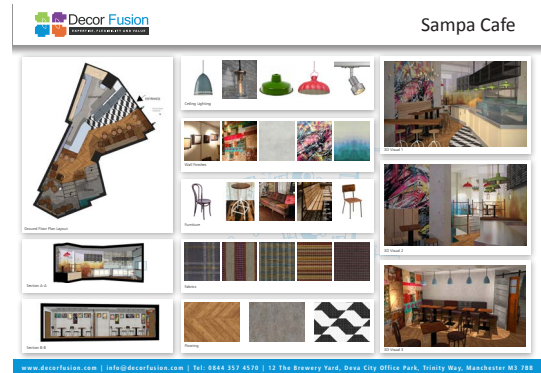
INTERIOR DESIGN SERVICES

(for projects under £50,000)



Interior Design Package £2,495.00

- Site survey and consultation.
- Concept stage meeting to include electronic mood board presentation.
- Space plan options to include furniture, toilets and back of house layout.
- Presentation board to include samples and or images of proposed finishes.
- Electronic presentation board.
- Specifications for proposed finishes for furniture, lighting, flooring, decorating, bespoke joinery and accessories.
- Fully itemised quotation for proposed FF&E.
- Up to three 2D and or 3D Visuals of key areas of design.



All prices stated above are exclusive of VAT and are subject to scope and scale of works required.

[VIEW OUR PORTFOLIO](#)

[CONTACT US NOW](#)