



## About Us...

CMP Architects was incorporated in 2009 following the sale of CMC Architects which was established by the directors in 1987. The practice was chartered in 2010 and has a proven track record in medium and large scale projects in both private and public sectors. CMP Architects is an award winning chartered practice specialising in residential, workplace, retail and leisure throughout the South and East of England.

There are four Executive Directors: Graeme Lockhart, Ivan Baggaley, Martin Gillespie and Richard Underwood supported by suitably qualified and experienced colleagues. The practice is currently engaged in projects from values of £750,000 to £25 million.

The central concern of the practice is design excellence achieved through partnership with clients and specialist consultants. Our approach is fresh and thoughtful rather than pre-determined and is primarily client focused.

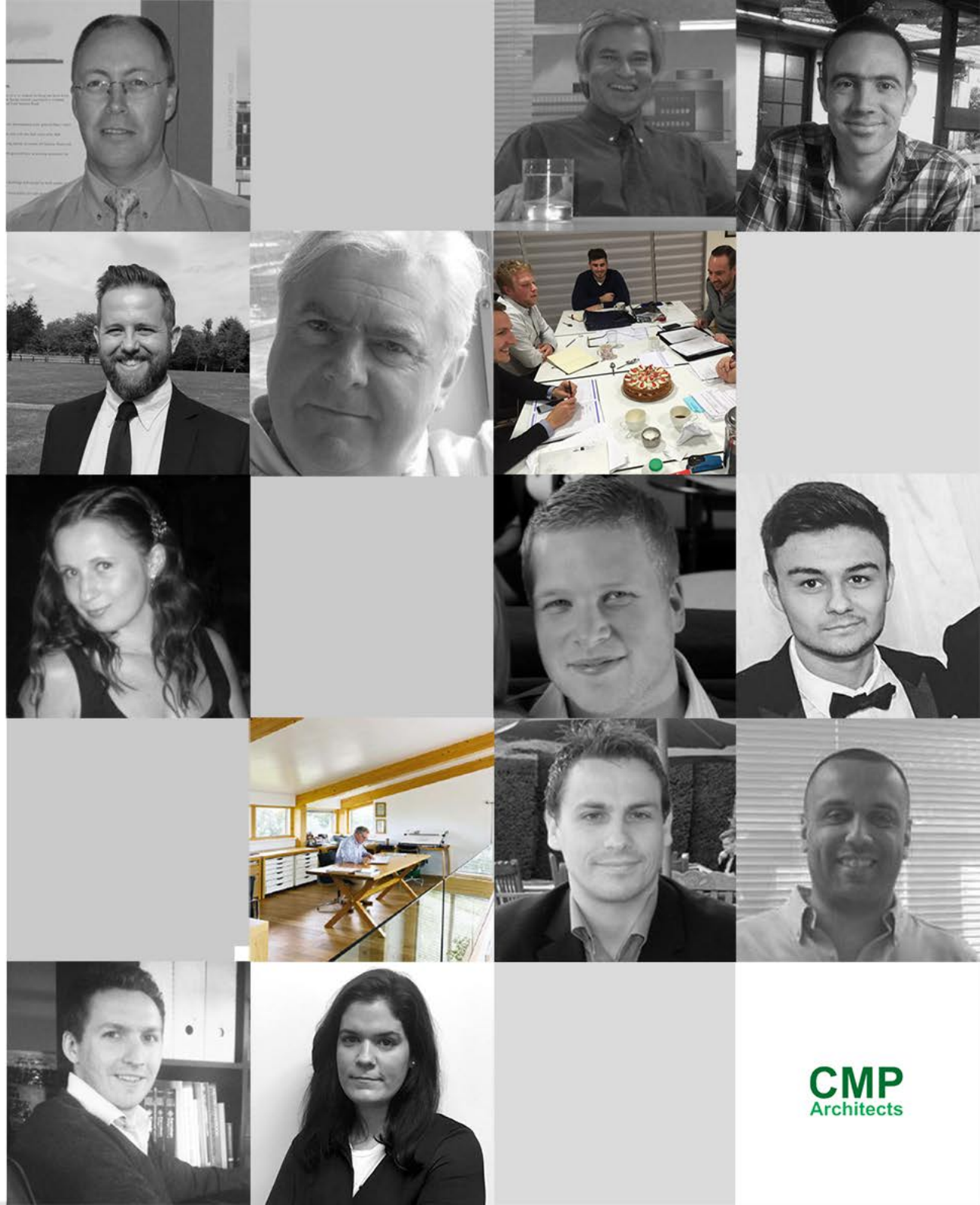
The practice was a recipient of the RIBA 'Spirit of Ingenuity' residential award in 2009 and the RIBA commendation of sustainable design. A wide range of supporting skills underpins the work of the practice including CAD, visualisations and 3D modelling.

### CMP Architects Ltd

The Old Grain Store  
Denny Lodge Business Park  
Ely Road  
Chittering  
Cambridgeshire  
CB25 9PH  
United Kingdom

Telephone: 01223 919 474  
email: [info@cmparchitects.com](mailto:info@cmparchitects.com)  
website: [www.cmparchitects.com](http://www.cmparchitects.com)

Company Registration Number: 6864265  
VAT Registration Number: 133085633



**CMP**  
Architects





## Student Accommodation and Education

### **Current projects:**

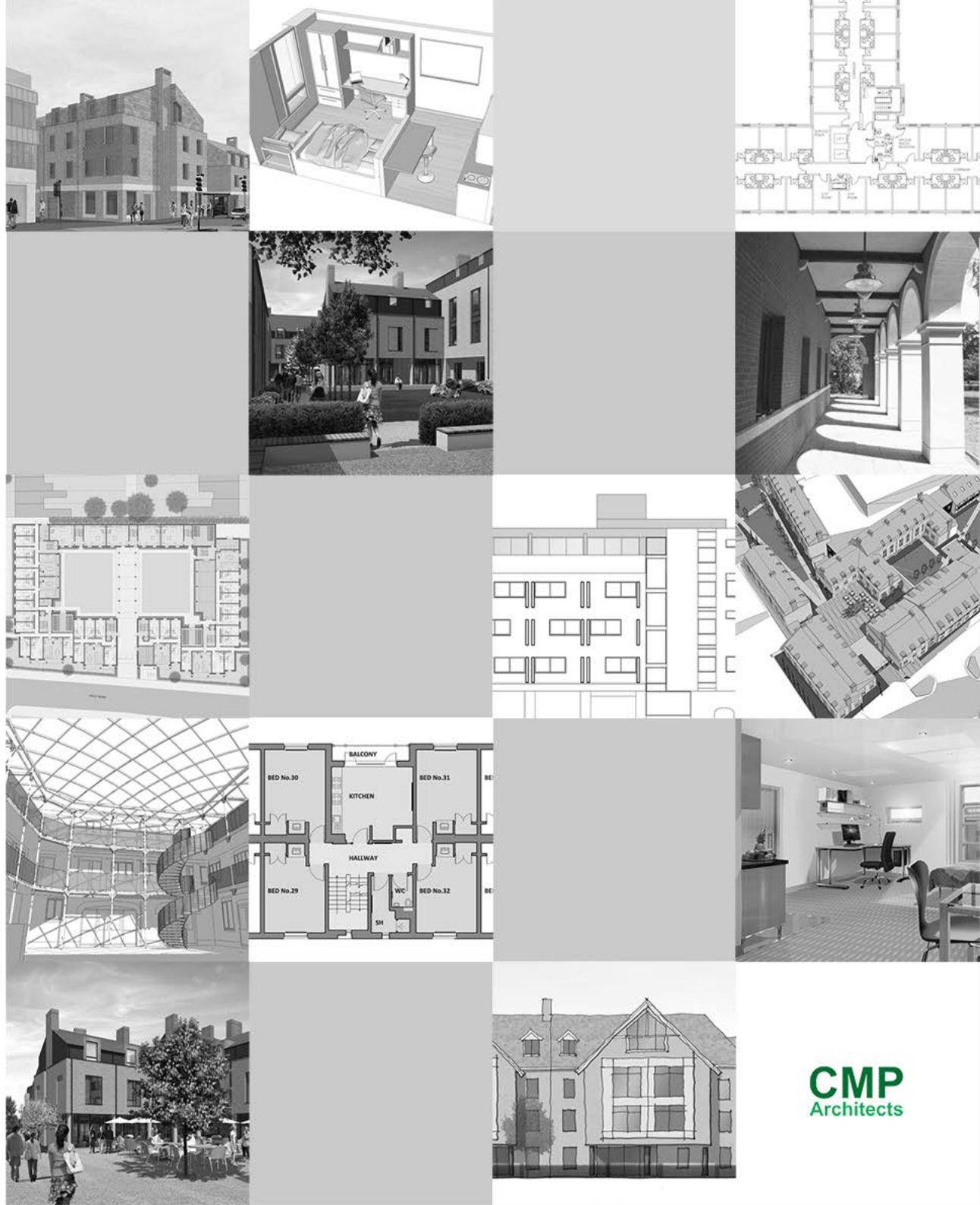
122-128 Newmarket Road  
Cheddars Lane, Cambridge  
Logic House, Cambridge

### **Recently completed projects:**

Iffley Road, Oxford  
Queens' College, Erasmus, Cambridge  
Miller's Yard, Mill Lane, Cambridge  
Newnham College, Cambridge

### **A selection of past projects:**

Homerton College, Cambridge  
King's College School, Cambridge  
Purbeck House, Cambridge  
Selwyn College, Cambridge  
Tindal Building, Student Centre, Anglia Ruskin, Chelmsford  
University of Cambridge, Departmental Refurbishments  
University of Cambridge, Unilever Centre, Cambridge







## 122-128 Newmarket Road, **Cambridge**

Comprising of 84 student bedrooms and a community Pub. The site occupies an important location within the Eastern Gate regeneration area. The scheme is designed to form a link between the remnants of the historic 'High Street' and emerging modern development along Newmarket Road.







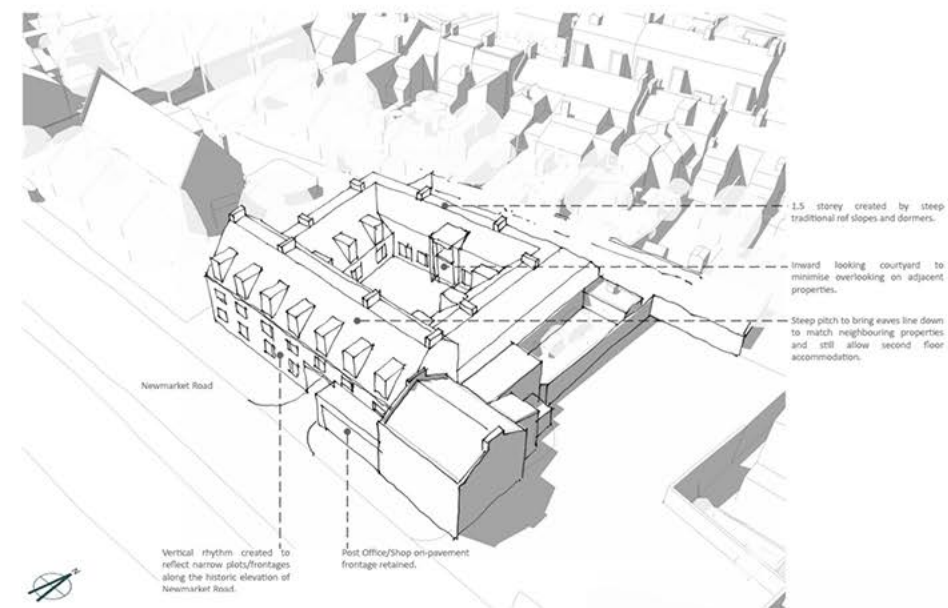
Studio room areas vary between 18-21m<sup>2</sup>

## Cheddars Lane, Cambridge

A development of 321 student rooms with 75% studios 25% bedsit/clusters. The scheme takes its form from the Victorian terraced housing in the immediate surroundings and acts as the first stage of the regeneration of this historic area of Cambridge. Planning consent granted August 2015.





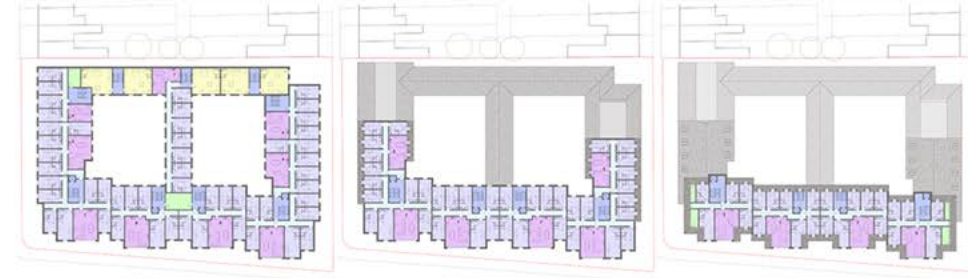


## Logic House, Cambridge

CMP Architects won a competition to design a mixed use scheme on this Newmarket Road site. A number of options are currently being looked at including student accommodation, residential and offices.

It is anticipated that a planning application will be made in 2017.





## Iffley Road, Oxford

Proposed student accommodation consisting of 145 en suite bedsits arranged in clusters and 10 studio units.





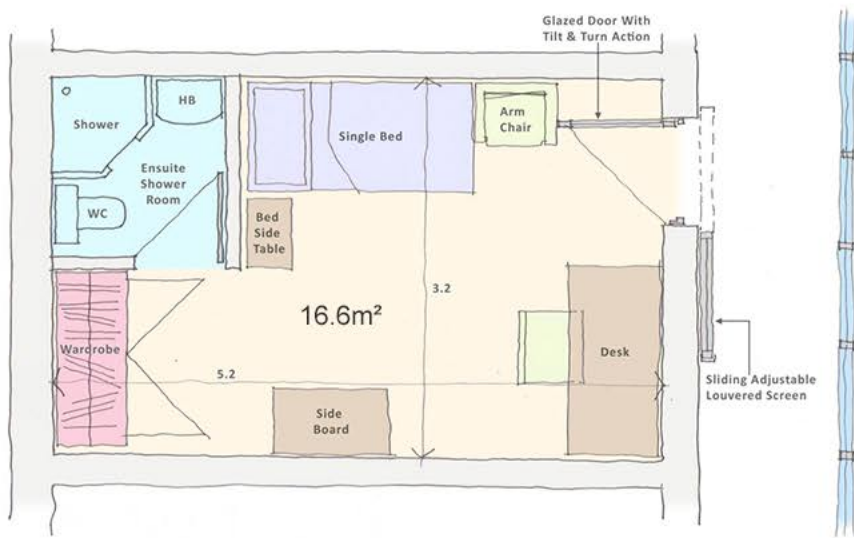


## Queens' College, Erasmus, **Cambridge**

The Erasmus Building was built in 1959-60 and designed by Sir Basil Spence. These proposals, which are at the pre-planning application stage, consists of the refurbishment of the existing 43 en-suite rooms together with DDA improvements with a further 14 en-suite study bedrooms provided in a roof top extension.

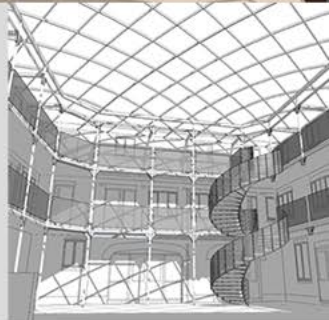
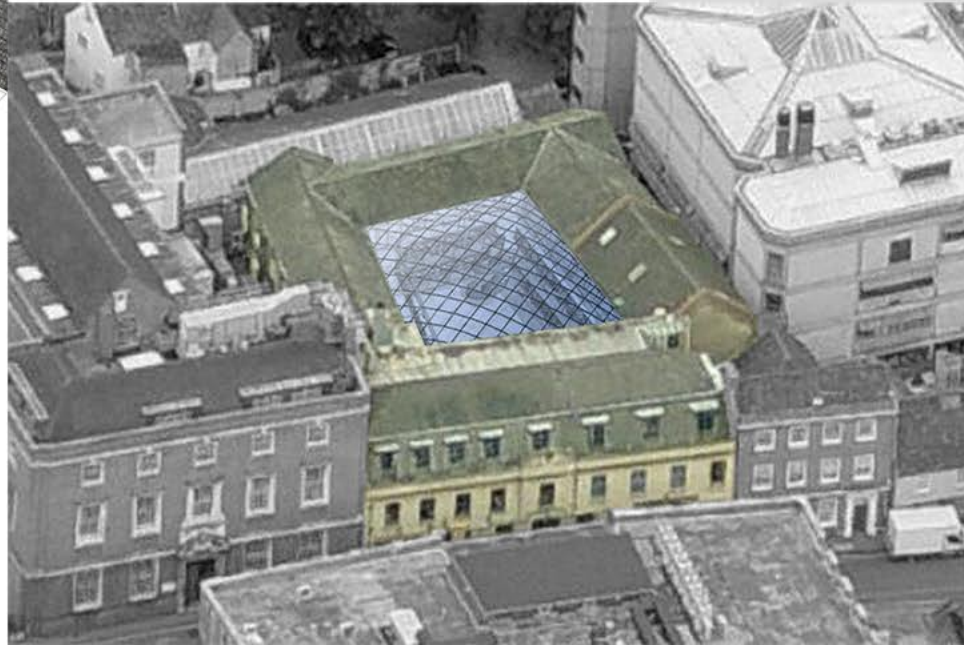
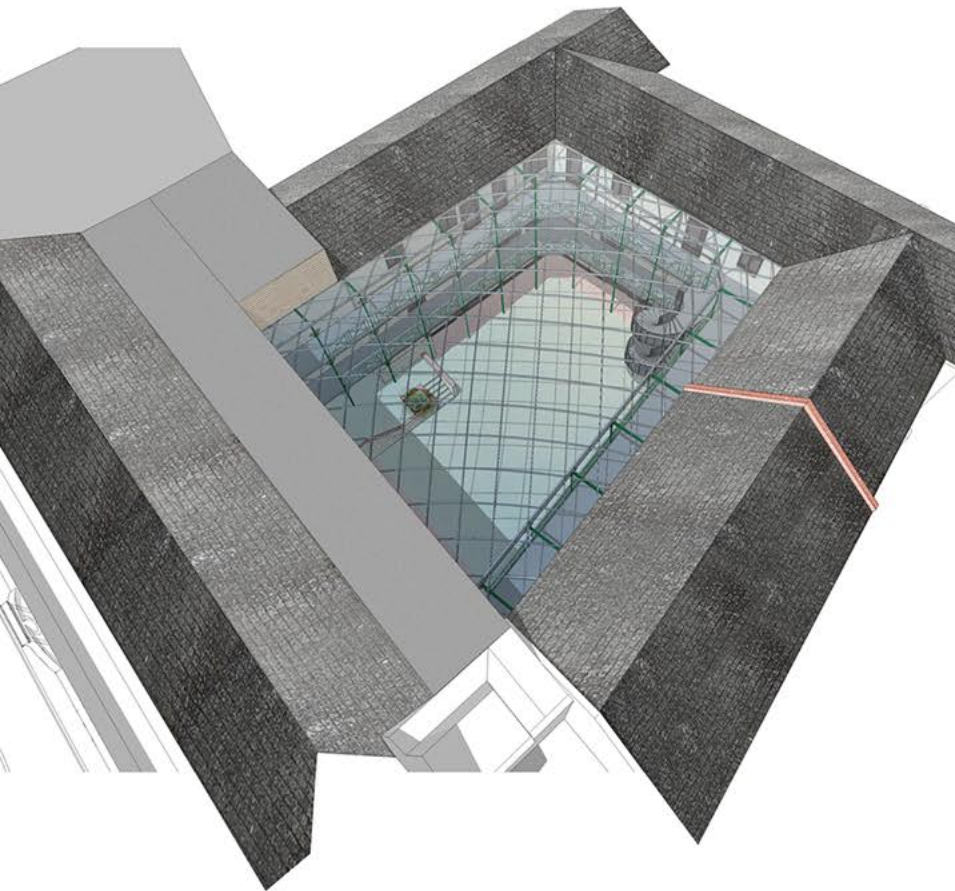




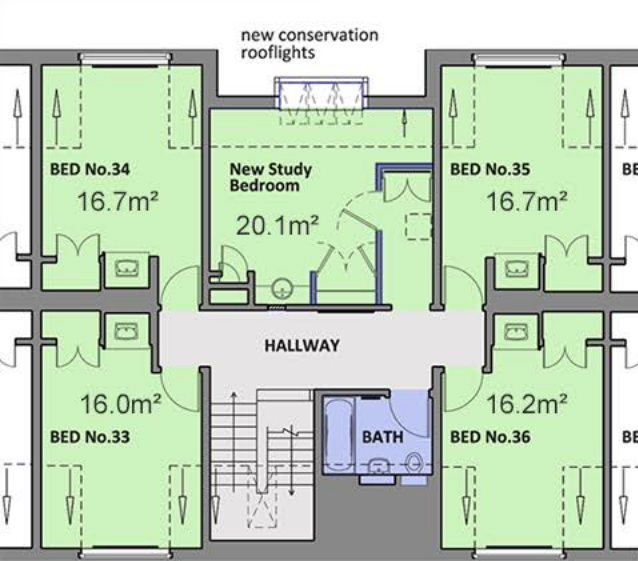


### Miller's Yard, Mill Lane, **Cambridge**

This project consists of the conversion of the existing office space and retail to student accommodation. The scheme was developed up to pre-app stage where it was given the 'green light' by the LPA to proceed to a planning application. The scheme was then aborted.





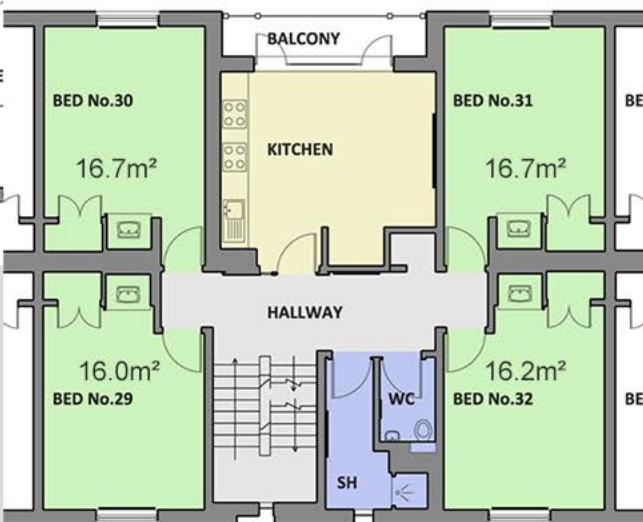


Second Floor Plan

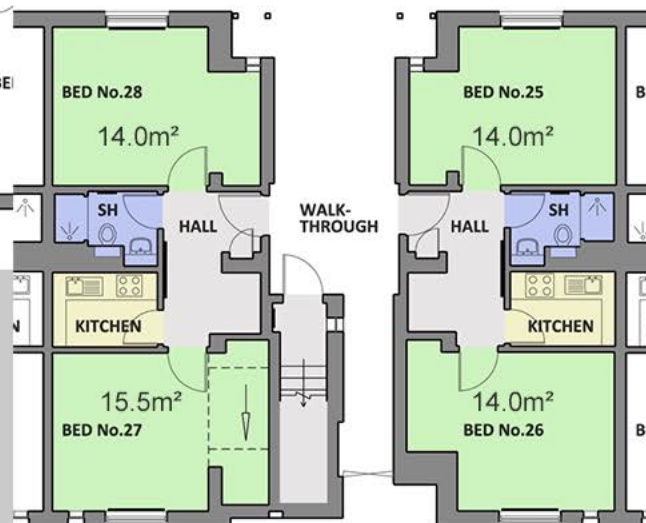


## Newnham College, Cambridge

CMP Architects were instructed to undertake the refurbishment of the Porter's Lodge and minor works to the Rosalind Franklin Building (designed originally by Allies and Morrison Architects) including additional en-suite rooms on the second floor.



First Floor Plan



Ground Floor Plan

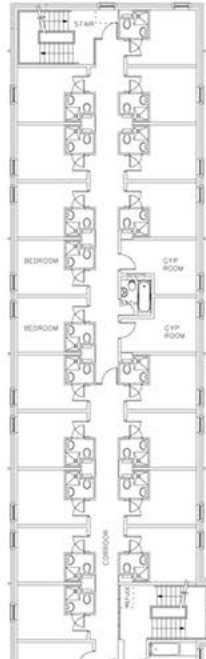




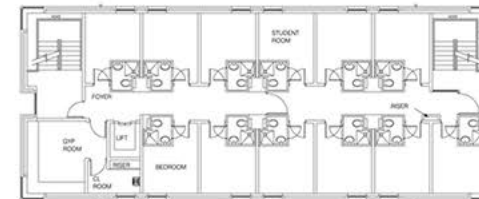
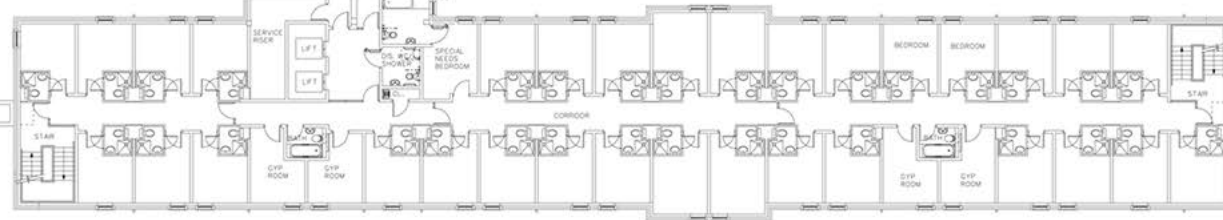


## Homerton College, Cambridge

The larger building contains 244 rooms together with the college laundry and caretaker accommodation. The smaller building located along Hills Road has 44 student rooms. Completed in July 1998. CMC Architects were the executive architects.



Typical room size 10.86m<sup>2</sup>





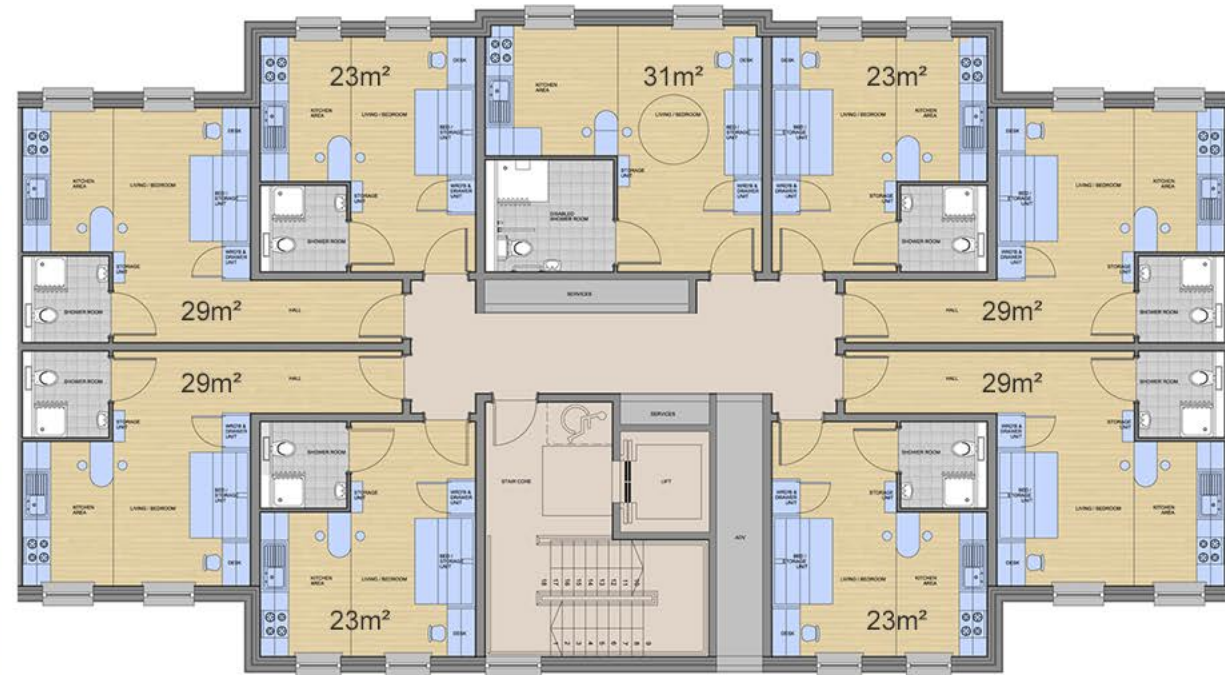


## King's College School, **Cambridge**

The building consists of new language and maths classrooms, a library and science laboratories designed around an external amphitheatre. The building was completed and opened in May 2004 and was designed by CMP Architects.

**CMP**  
Architects



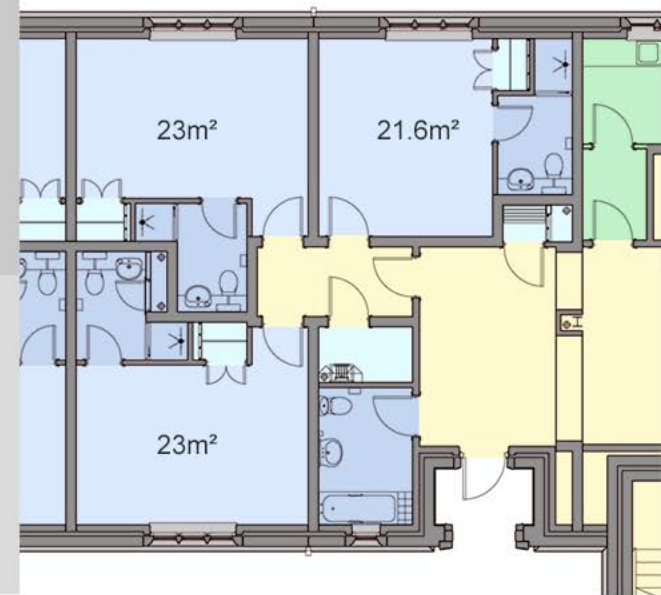
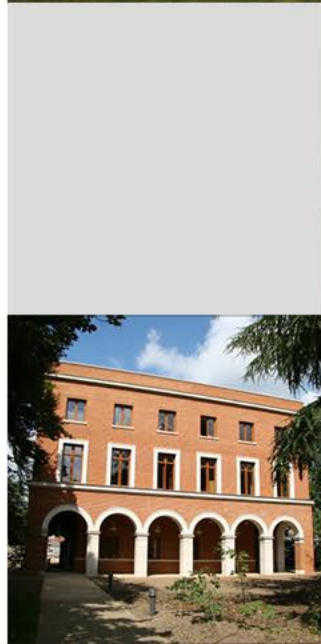
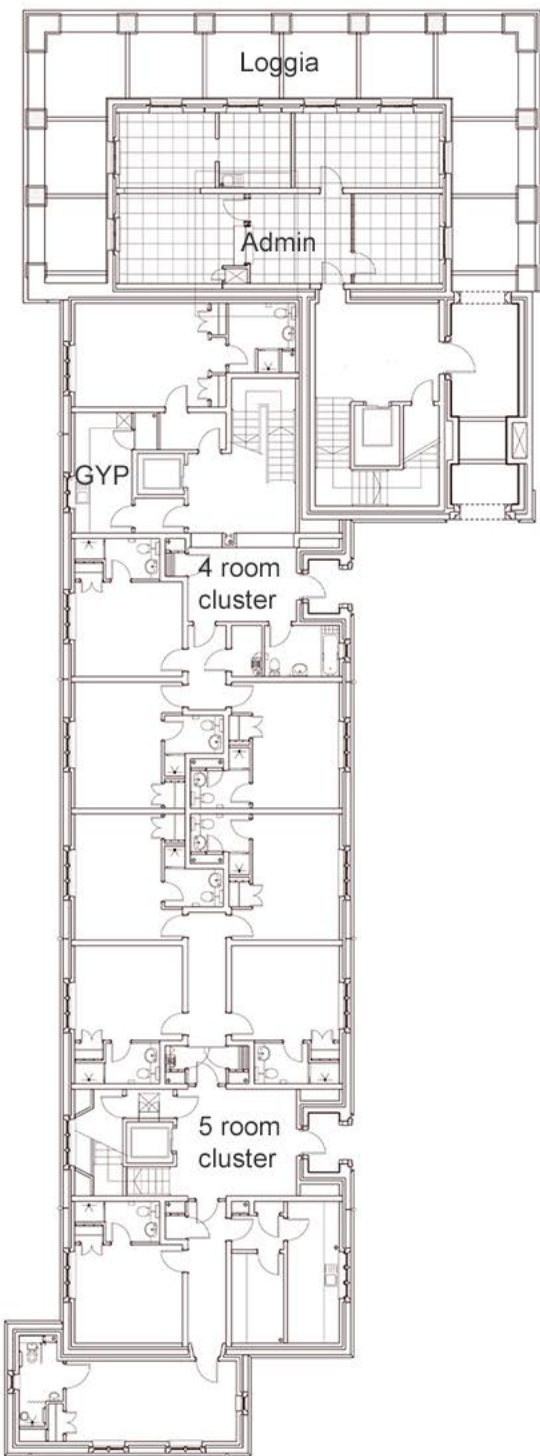


## Purbeck House, Cambridge

This project consists of 151 student studio apartments and a caretaker's flat. Designed by CMC Architects and was completed 2009.

**CMP**  
Architects





## Selwyn College, Cambridge

65 room student accommodation and common room facilities.

Completed in April 2009. CMC Architects were the executive architects.





## Tindal Building, Student Centre, Anglia Ruskin, **Chelmsford**

The Student Centre consists of café facilities and student bars at ground and first floor with standard office accommodation at second and third floors.

Completed in April 2005. CMP Architects were the executive architects.





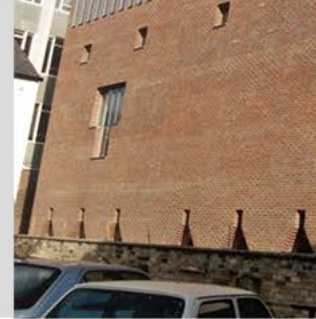
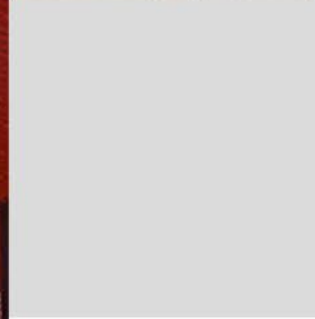
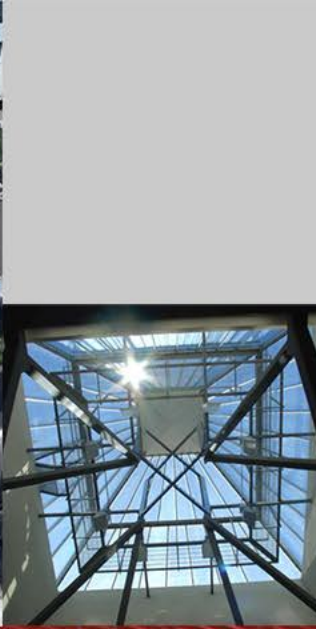


## University of Cambridge, departmental refurbishments

CMC Architects were commissioned by Cambridge University Estates Management to undertake refurbishments in various phases of the departments of Anatomy, Engineering and Physiology which were completed between 2003 and 2008.







## University of Cambridge, Unilever Centre, **Cambridge**

The Unilever Cambridge Centre was completed in 2000.

CMC Architects were the executive architects.







## Residential

### **Current projects:**

North Road & Might's Road, Southwold

161 Newmarket Road, Cambridge

288 Cambridge Road, Great Shelford

### **Recently completed projects:**

57 High Street, Trumpington

Canning House, London

75 New Street, Cambridge

Orchard Road, Haslingfield

1 Benson Place, Cambridge

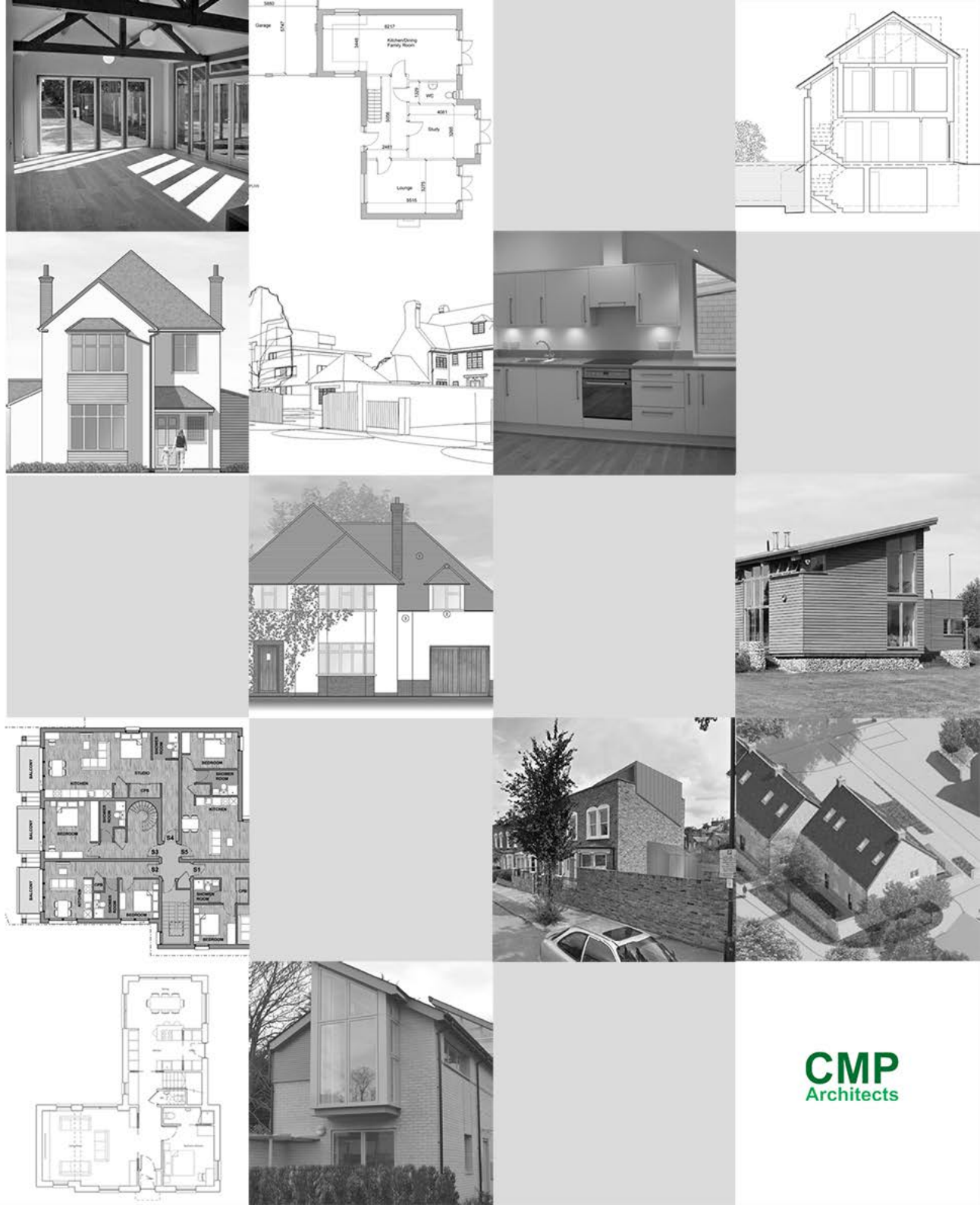
Mingle Lane, Shelford

The White House, High Wych

Laburnum House, Ely

### **Selection of past projects:**

Meridian Gardens, Newmarket





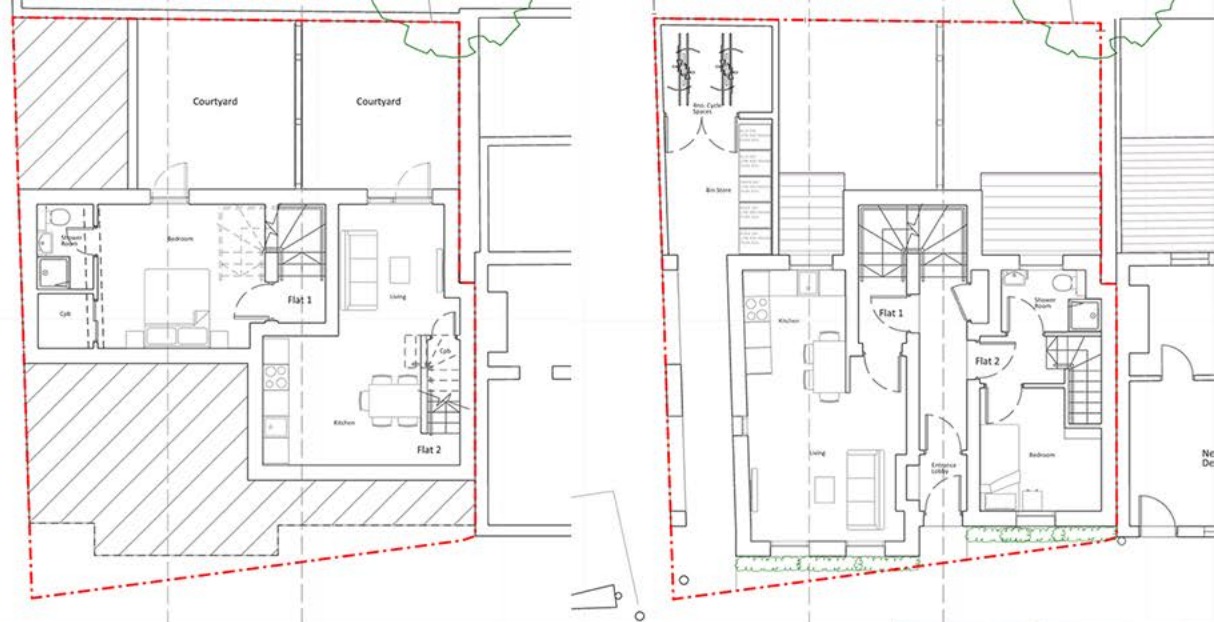


## North Road & Nights Road, Southwold

13 high quality, contemporary townhouses spread across two sites, on opposite sides of the road. Planning was granted in May 2016 and building is due to start on site in January 2017.







## 161 Newmarket Road, Cambridge

The proposal is for the creation of private residential accommodation to consist of 4no. flats arranged as duplexes, bin and cycle storage and a lower ground floor courtyard.



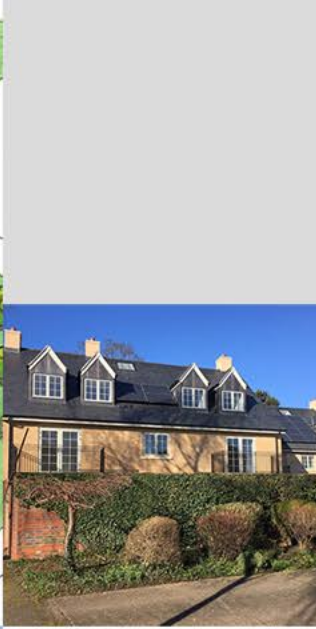




288 Cambridge Road, **Great Shelford**

Refurbishment of the existing house and a new build in the garden.



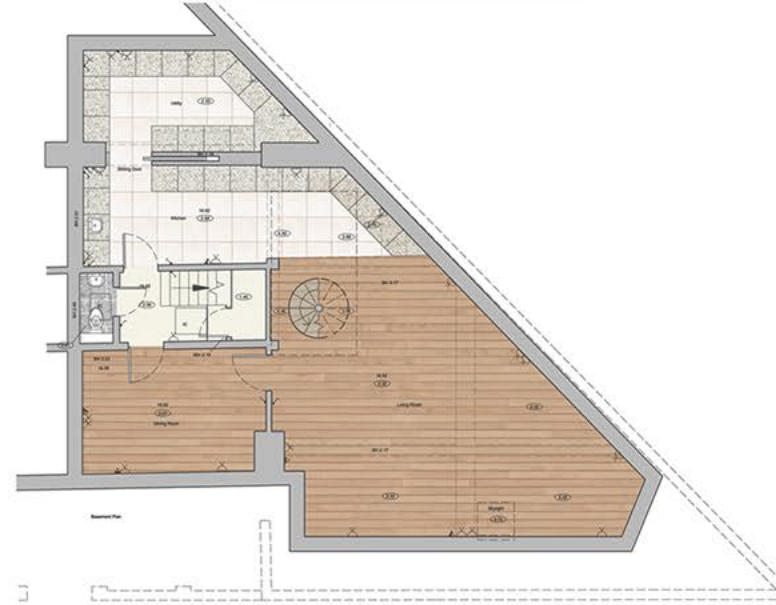
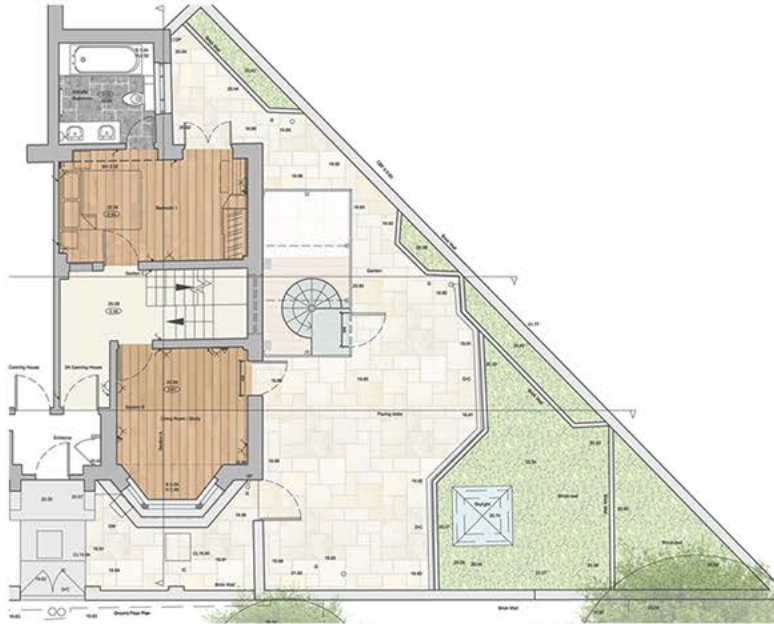


## 57 High Street, Trumpington, Cambridge

This development of 14 apartments is currently under construction. The scheme has been designed to sit within the Trumpington conservation area. Completed February 2016.

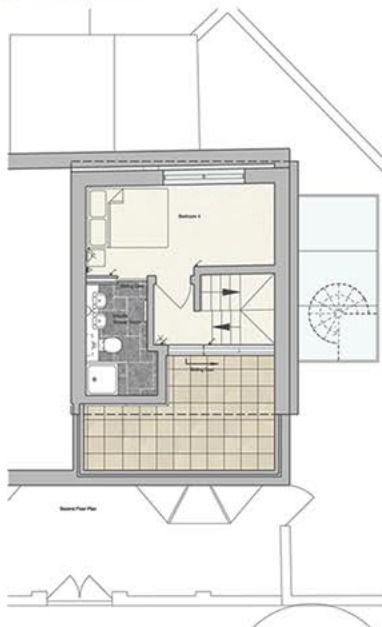
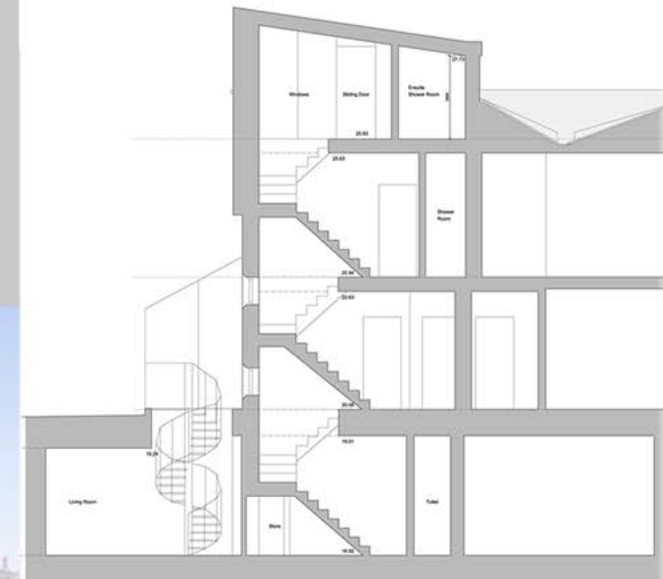






## Canning House, London N5 2JS

Proposed ground floor conservatory and second floor roof extension.



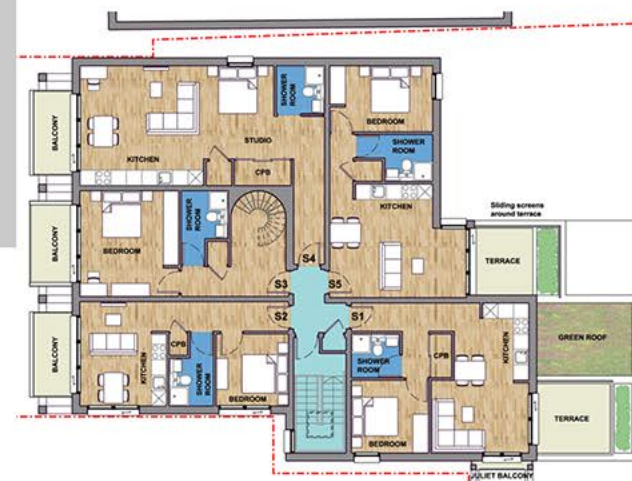




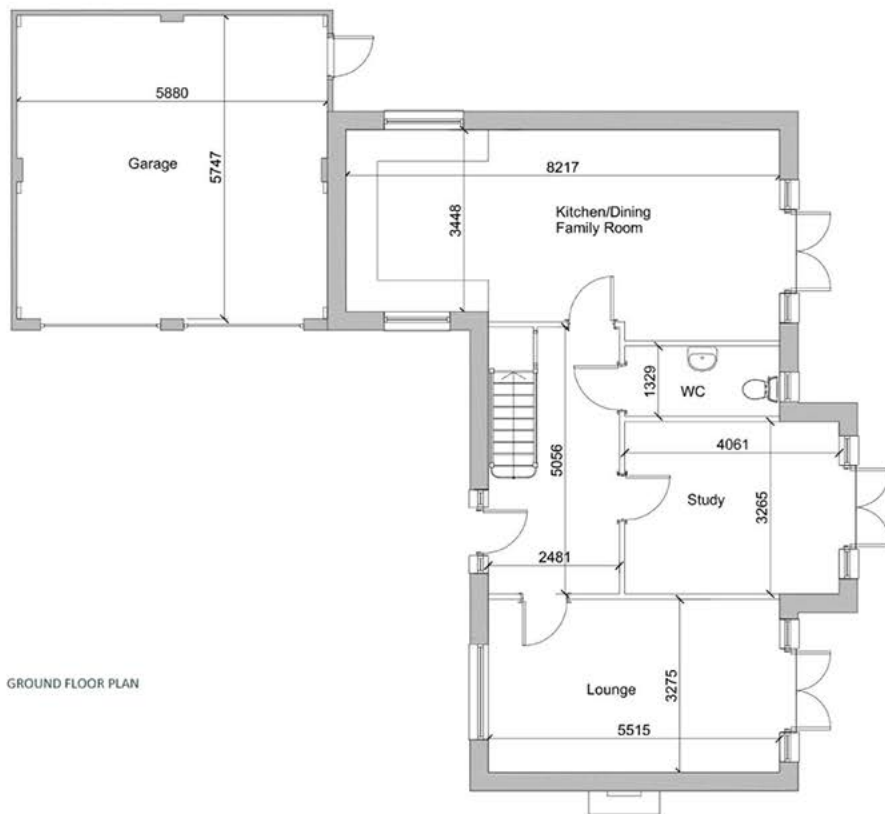
## 75 New Street, Cambridge

Currently under construction, this development of 14 units consisting of studios, 1 and 2 bed apartments adjoins St Matthew's Piece in central Cambridge.

Completed January 2016.







GROUND FLOOR PLAN



## Orchard Road, Haslingfield, Cambridgeshire

Two large residential units designed on vacant land, adjoining the village pub.

Planning consent granted in 2015.







## 1 Benson Place, Cambridge

A development of 8 studio apartments and 1 bedroom flats designed on a tight site previously occupied by a single bungalow. The design successfully repairs this residential street scene, in a conservation area. Completed autumn 2014.





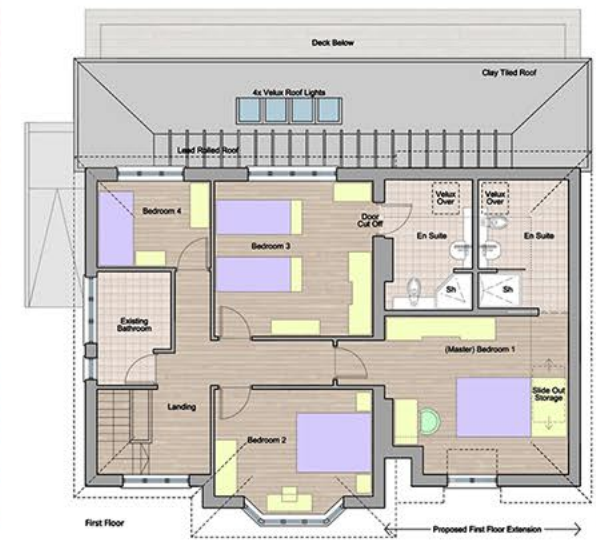


## Mingle Lane, Great Shelford

Two 4 bedroom executive houses.







# The White House, High Wych, Hertfordshire

Proposed remodelling for a private client.  
Completed 2015.





## Laburnum House, Ely

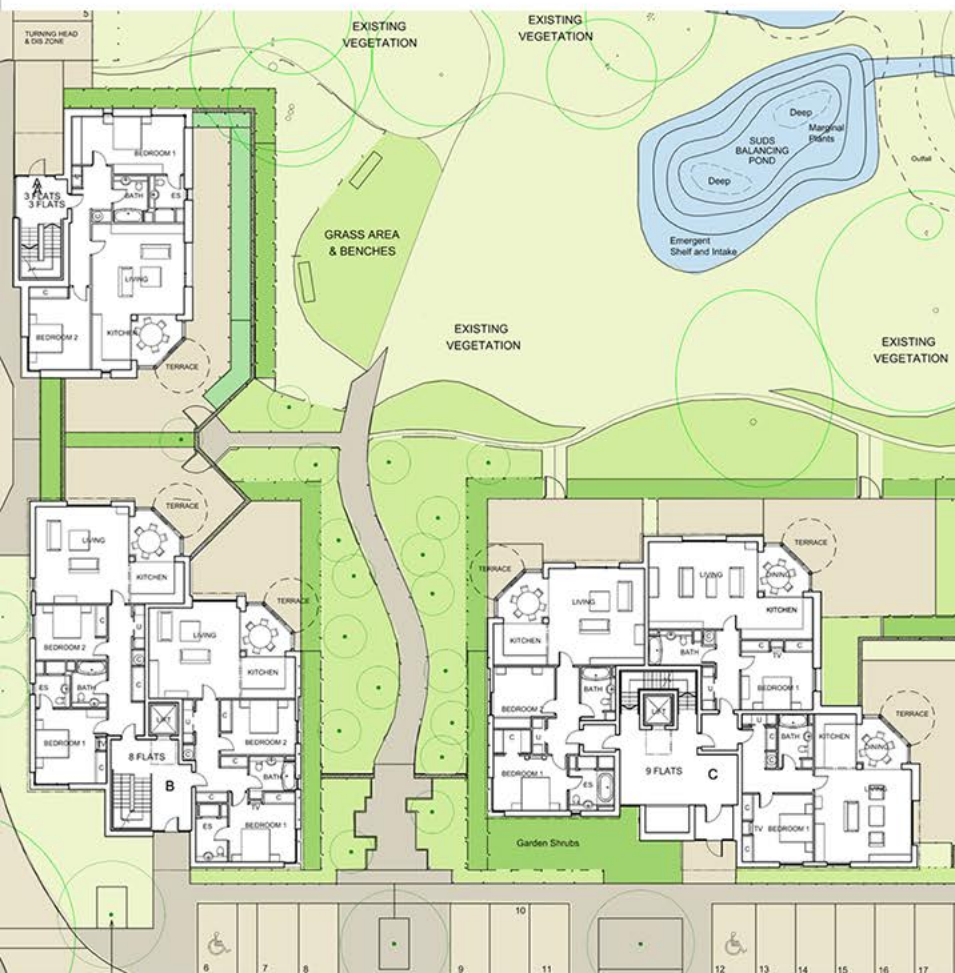
This award winning house is designed to take full advantage of spectacular views of the Cathedral, fenland and River Great Ouse and respond to its environment, promoting sustainability and biodiversity.

RIBA Jury comments:

*'This house with its very polished design for the architects own use is located on a generous site, adjacent to one of the main roads at the outskirts of Ely. Details are well considered and the internal spaces flow beautifully with views out to open country. The many sustainability features include a reed bed and wind turbine.'*







## Meridian Gardens, Newmarket

This award winning development consisting of 20 luxury apartments was designed by CMC Architects. The site lies within the Bury Road conservation area and benefits from panoramic and southerly views over the 'Gallops.' Completed 2010.







## Workplace

### **Current projects:**

Opus 2, London

Bury Street, London

Crabtree Manorway North, Belvedere, London

Ridgeon's, Saffron Walden

### **Recently completed projects:**

Research Laboratories, Cambridge

Welch's Transport Depot, Duxford

Salhouse Road, Norwich

Essential Care, Kennett

Incubator Building, Porton Science Park, Porton Down, Wiltshire

St John's Park, Huntingdon

### **A selection of past projects:**

County Court Building, East Road, Cambridge

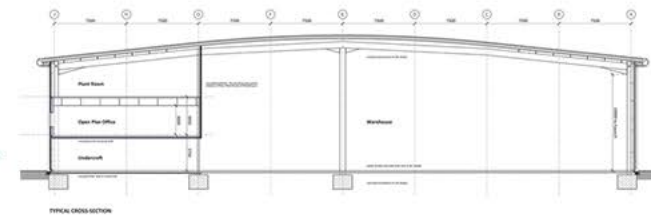
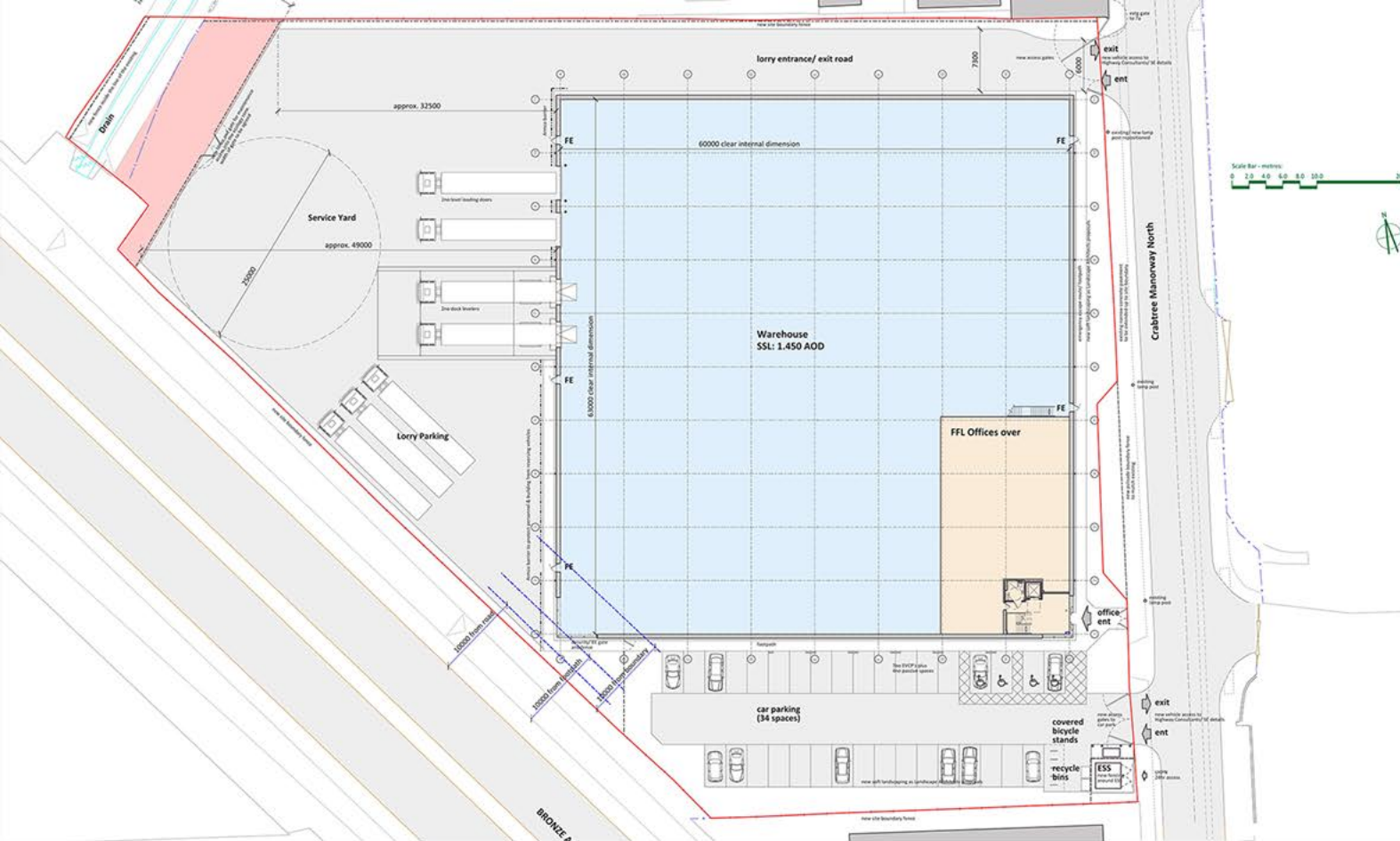
Hauser Forum, Cambridge

Priory Place, Chelmsford

Terrington House, Cambridge

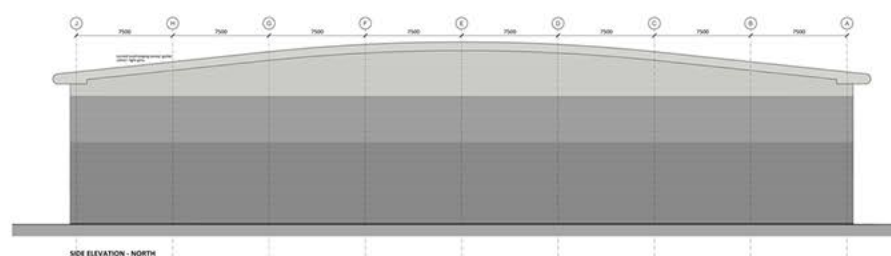
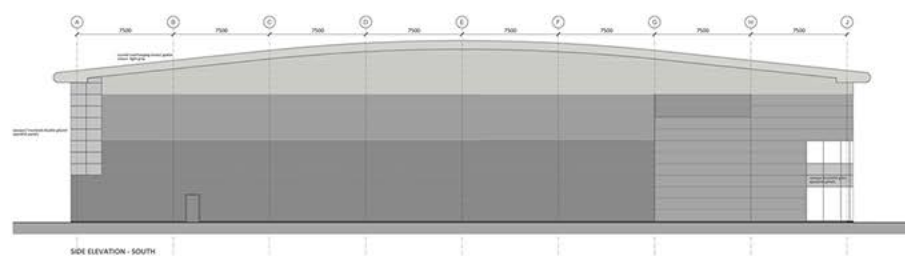
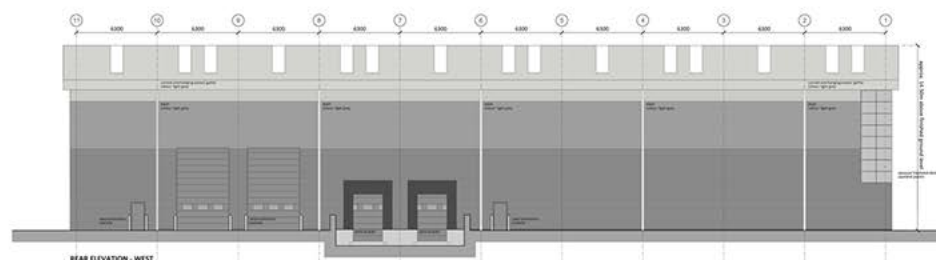
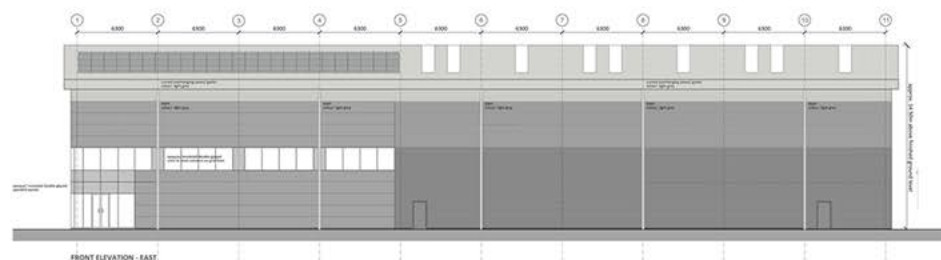




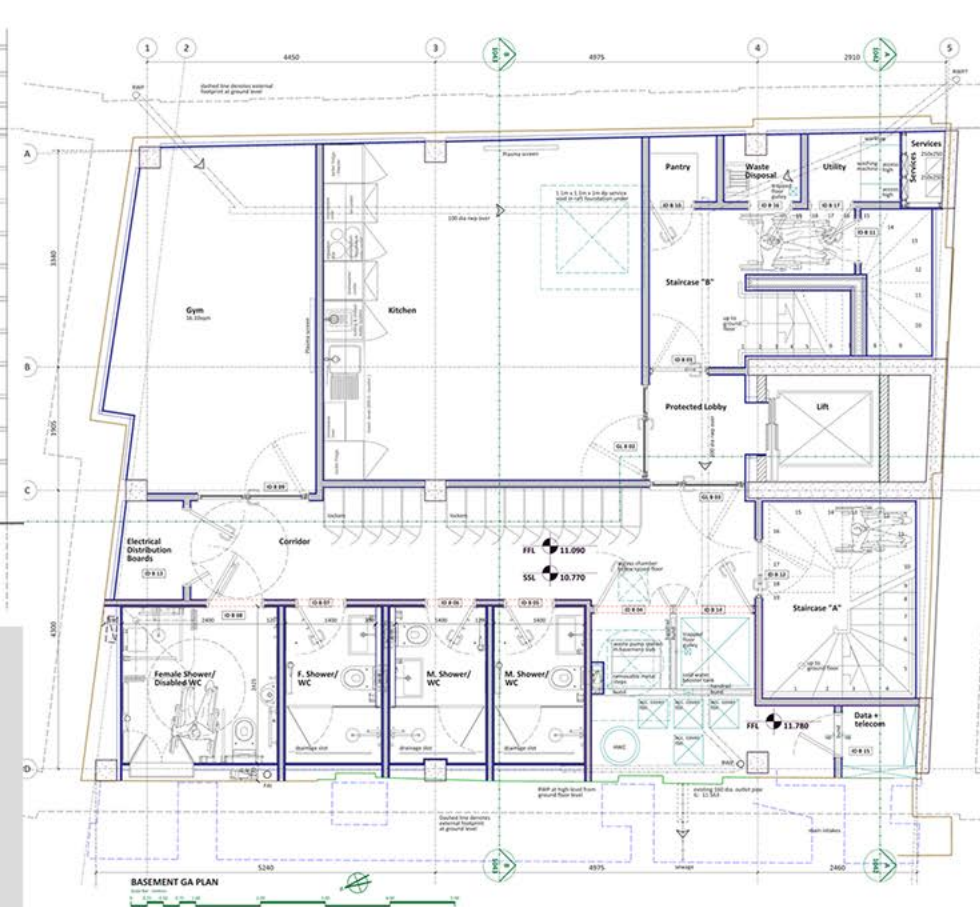


## Opus 2, London

This new development comprises of a single building, the size/ depth of yard and range of use classes were carefully chosen to suit current demand and market conditions.



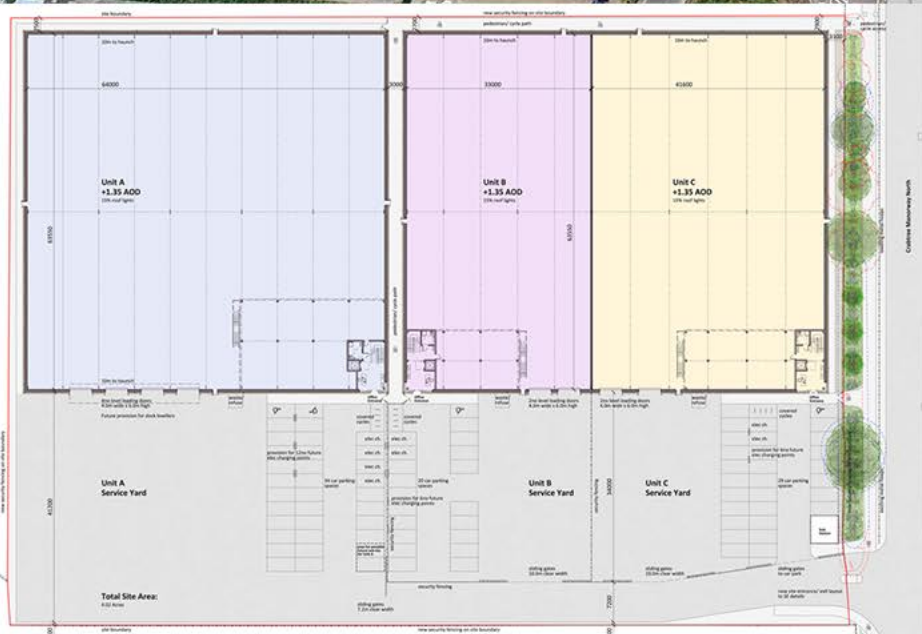




Office refurbishment for a leading finance company in central London, including total internal demolition and strip-out of an existing 4-storey office building with façade retention to front and rear, 2-storey extension and basement enlargement.







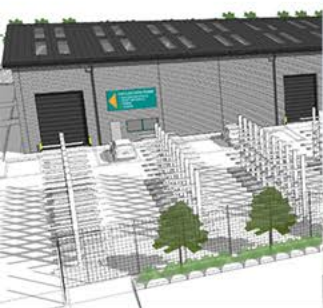
## Crabtree Manorway North, Belvedere, London

B1(c) B2 and B8 industrial units.

Planning consent granted April 2015. Shortly to commence on site.

**CMP**  
Architects

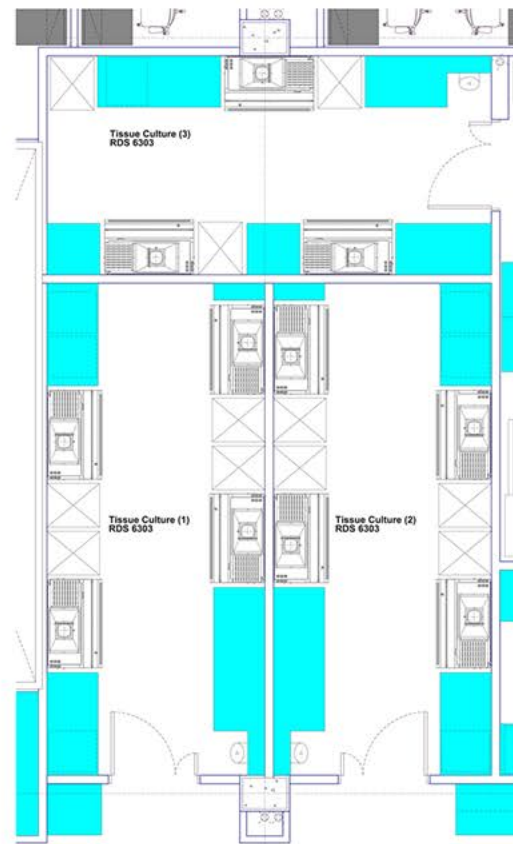




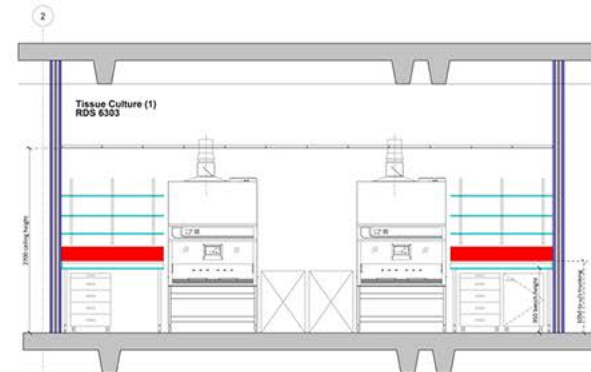
Proposed new store forming the first phase of a mixed use development. Currently at planning application stage.



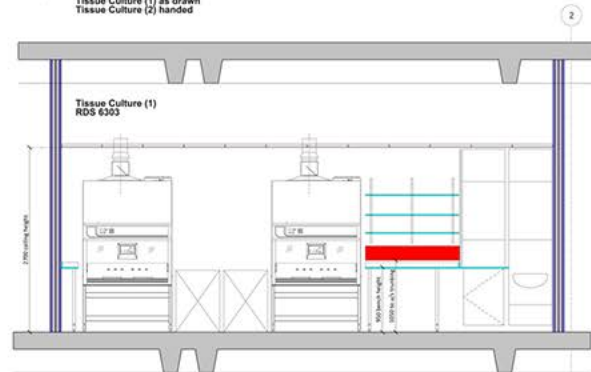




TISSUE CULTURE ROOM PLAN LAYOUTS



SECTIONAL WALL ELEVATION A-A  
Tissue Culture (1) as drawn  
Tissue Culture (2) handed



SECTIONAL WALL ELEVATION B-B  
Tissue Culture (1) as drawn  
Tissue Culture (2) handed

## Research Laboratories, Cambridge

Wet and dry laboratory facilities at the Biomedical Campus at Addenbrooke's Hospital.

Completed April 2015.





## Welch's Transport Depot, Duxford

New transport and sales facility. Completed 2014.



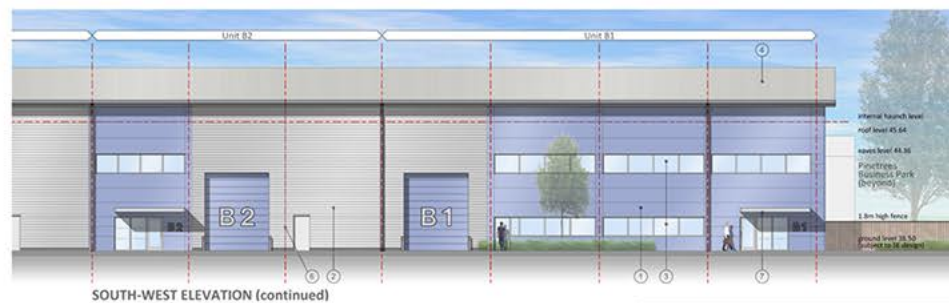
**CMP**  
Architects





## Salhouse Road, Norwich

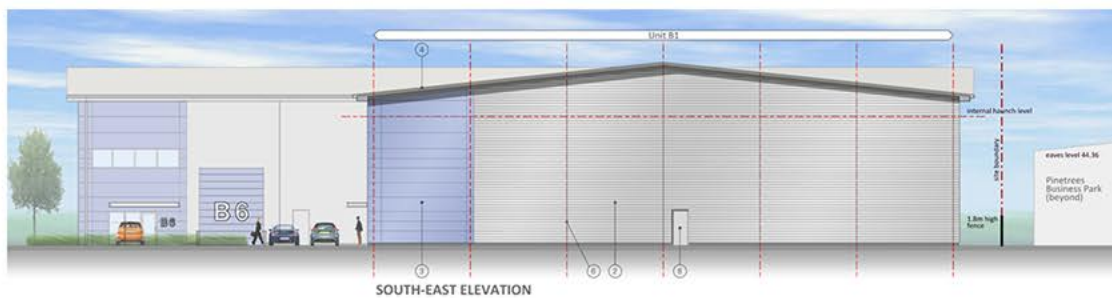
Planning consent for a B1C, B2 and B8 development, granted in 2012.



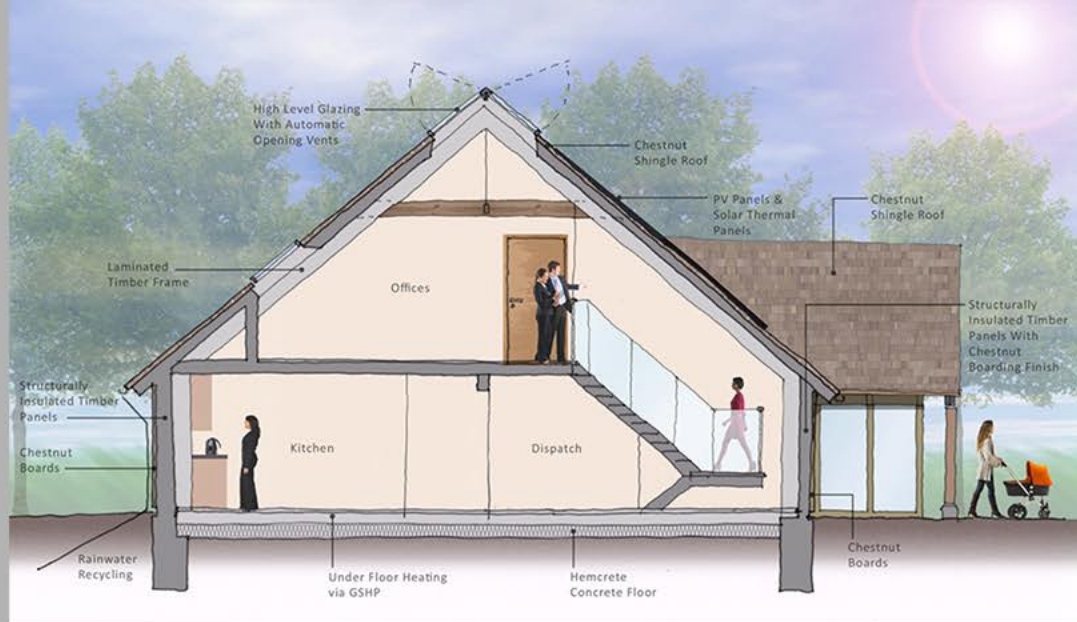
Materials Schedule

- Micro-rib cladding panels - colour: light blue
- Half-round profiled cladding - colour: metallic silver
- Powder coated integral windows/ doors/ glazed screen  
Colour: To match wall cladding  
Glazing to be clear double glazing
- Profiled steel roof sheeting - colour: powdering grey  
Roof pitch: 6 deg
- Vertical sliding loading door - colour: blue
- Feature vertical joints in cladding
- Proprietary entrance canopy - colour: silver
- Steel personnel door - colour: grey

Scale bar - metres  
0 1 2 3 4 5 6 7 8 9 10

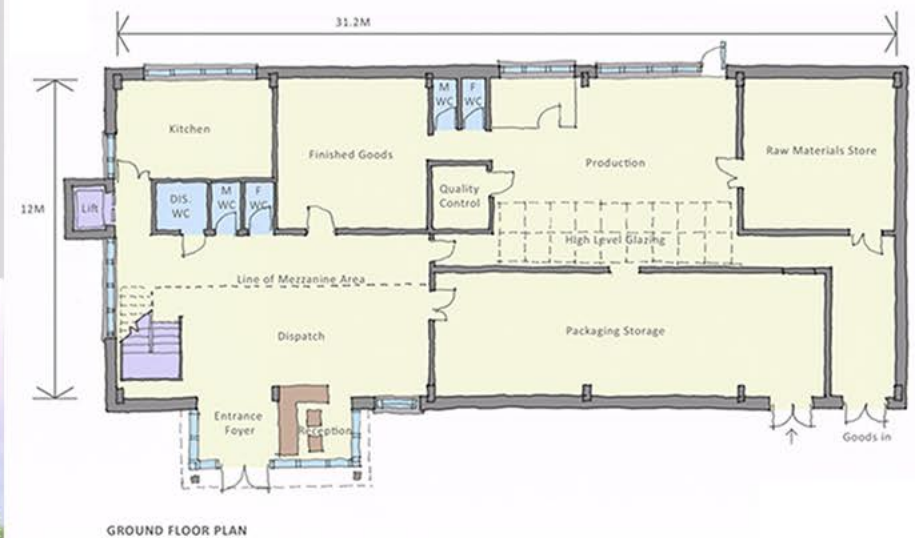
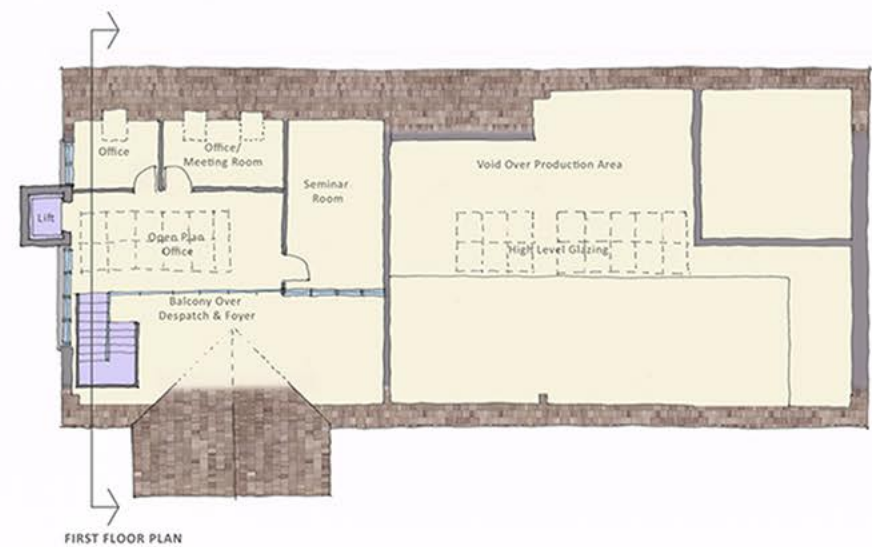




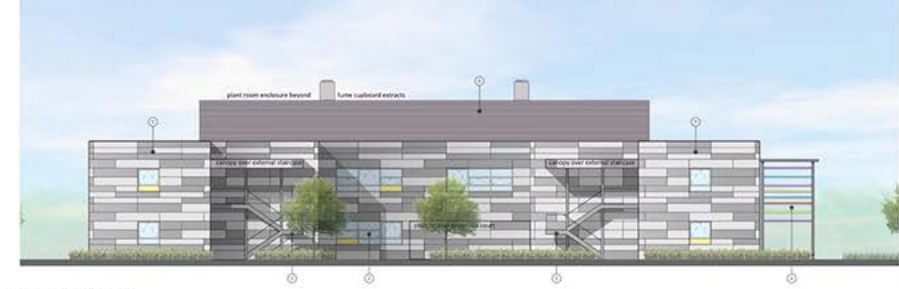


## Essential Care, Kennett

A new production facility near Newmarket, Suffolk. Concept design.



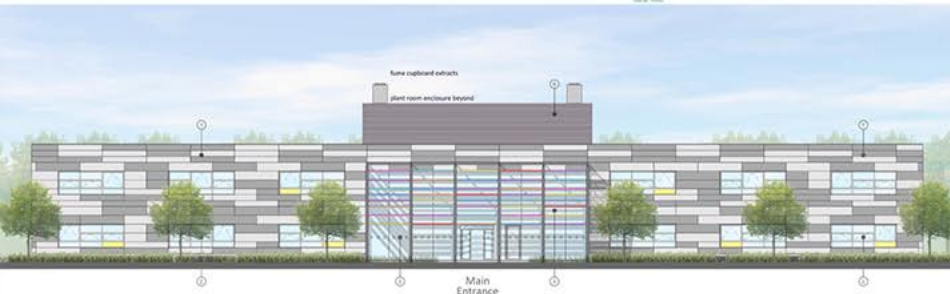




West Elevation (Side)

## Incubator Building, Porton Science Park, Porton Down, **Wiltshire**

30,000sq ft laboratory and incubator facilities forming the first phase of a major research park. Planning consent granted.



South Elevation (Front)

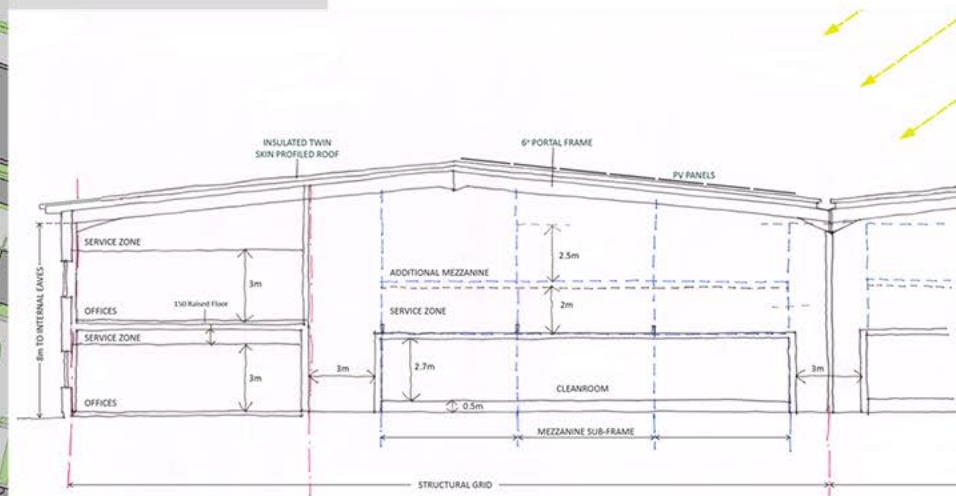


**CMP**  
Architects





Proposed production facility for an owner occupier, currently at pre-application stage.







## County Court Building, East Road, Cambridge

The building has nine new Court/Hearing rooms with ancillary office accommodation. CMC Architects were the executive architects.







## Hauser Forum, Cambridge

University of Cambridge's Entrepreneurship Centre, commercial offices and a new Café facility cantilevering out over a reflecting pool & ornamental ponds. Completed 2008. CMP Architects were the executive architects.







## Priory Place, Chelmsford

This office development includes accommodation for Chelmsford County Court, designed by CMP Architects and completed in 2005.







## Terrington House, **Cambridge**

Office refurbishment in Hills Road, Cambridge,  
designed by CMC Architects.







## Leisure, Retail, Mixed Use and Master Planning

### Current use projects:

Ely Leisure Village, Downham Road, Ely

Master Plan, Northern Gateway, Colchester

Master Plan, Southend-on-Sea

Master Plan, Royal Norfolk Showground, Norfolk

Grafton Centre, Cambridge

Master Plan, Ashdon Road, Saffron Walden

CRUFC, Cambridge

### Recently completed projects:

Park & Ride, Colchester

### A selection of past projects:

Cambridge Leisure, Cambridge







## Ely Leisure Village, Downham Rd, Ely

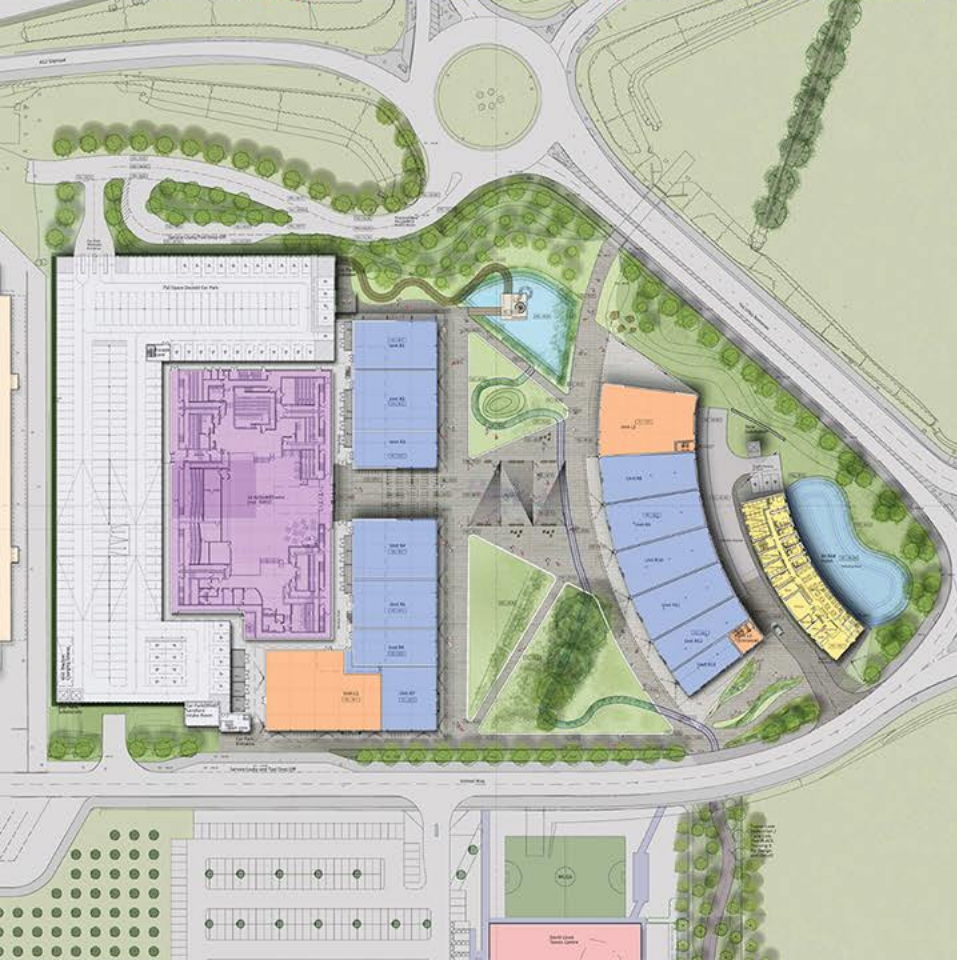
A development comprising a 6 screen cinema, restaurants and drive thru's.

Planning consent was granted in April 2015.



**CMP**  
Architects





## Master Plan, Northern Gateway, Colchester

Leisure and retail scheme including 12 restaurant/hot food takeaway units, an 80 bed hotel, 12 screen multiplex cinema, 3 active leisure units, multi-storey car park and the provision of cycle/pedestrian link to Tower Lane.



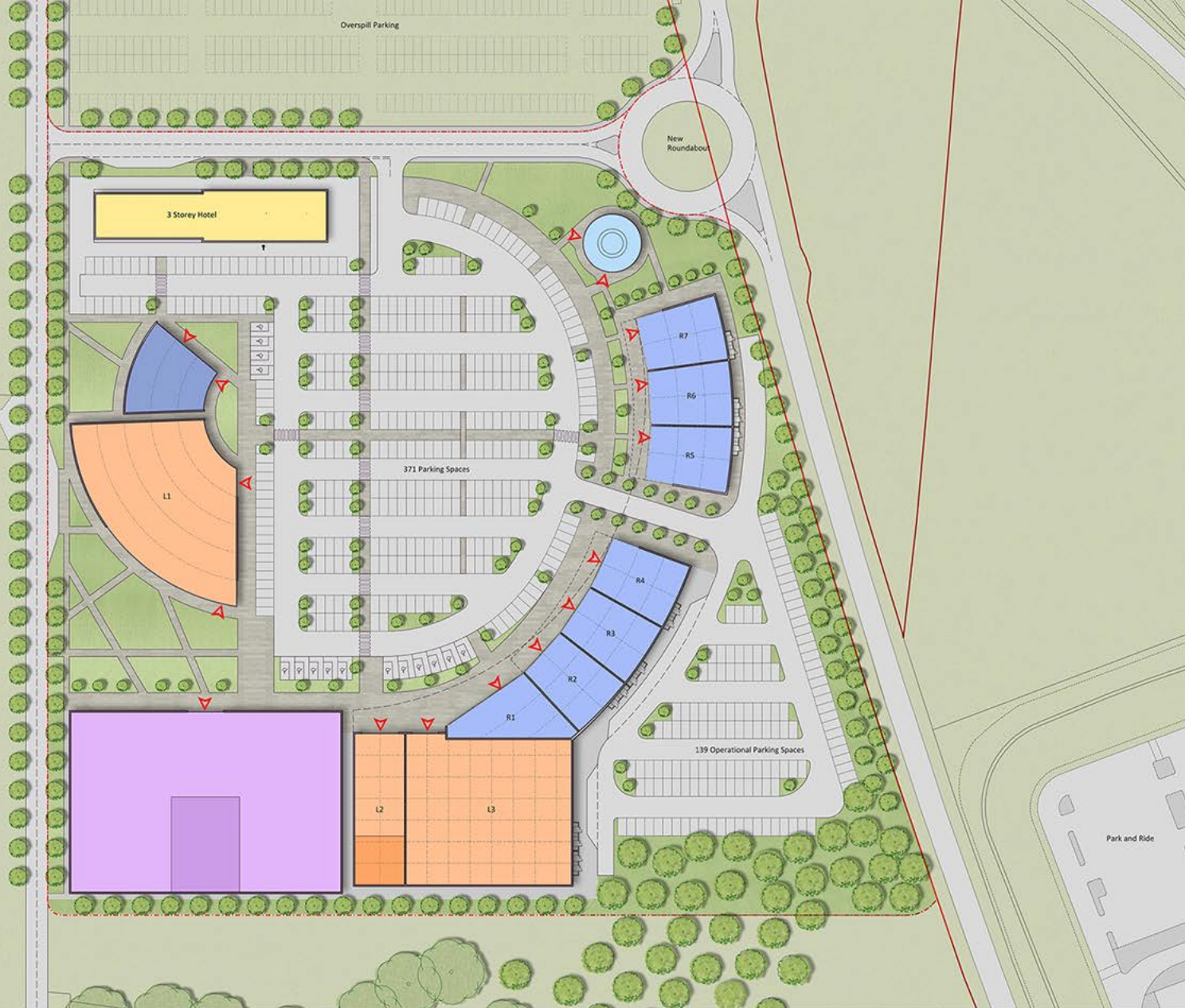




Mixed use leisure scheme on the site of the current Seaway car park comprising of a 10 screen cinema, 10 A3 restaurants, a multi-storey car park, 98 residential apartments and new public open spaces.



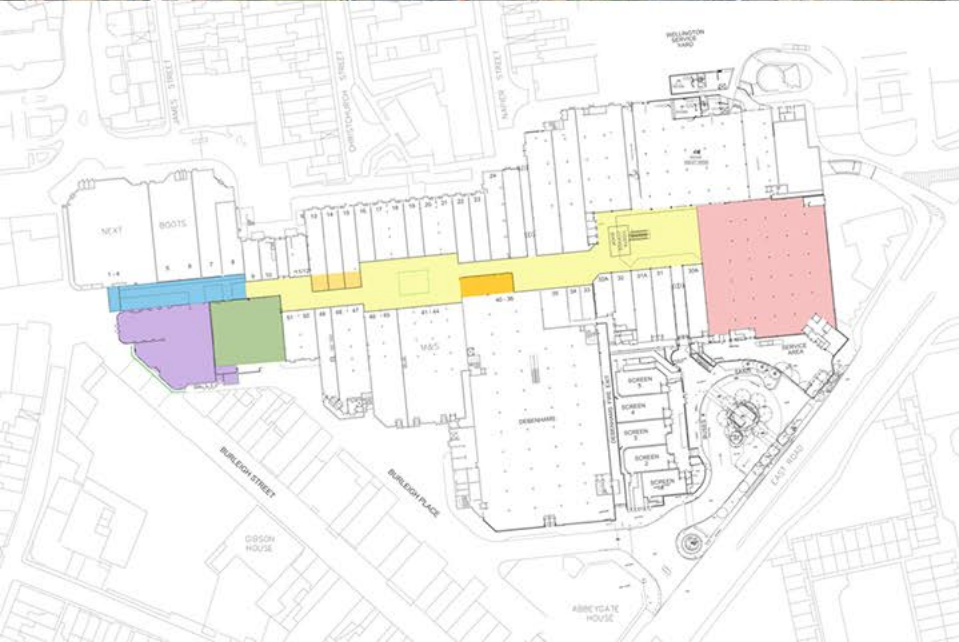




## Master Plan, Royal Norfolk Showground, **Norfolk**

Proposed leisure park at Royal Norfolk Showground.





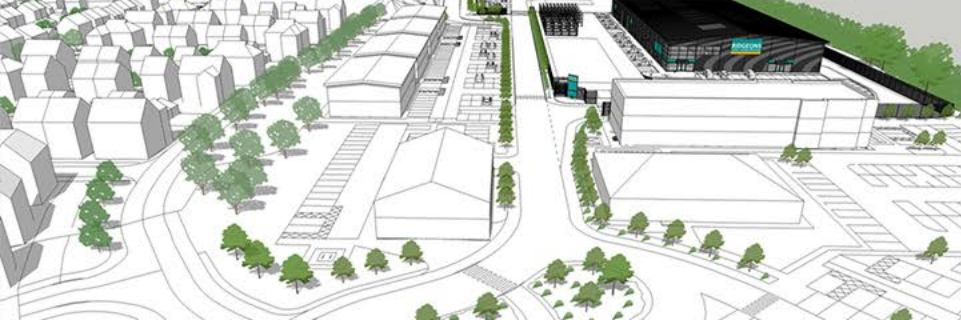
## Grafton Centre, Cambridge

Redevelopment and regeneration of the Grafton Centre.



**CMP**  
Architects





## Master Plan, Ashdon Road, Saffron Walden

Redevelopment of the former Ridgeon's site to provide mixed uses including residential, a builder's merchant, hotel, retail, restaurant and employment.

**CMP**  
Architects

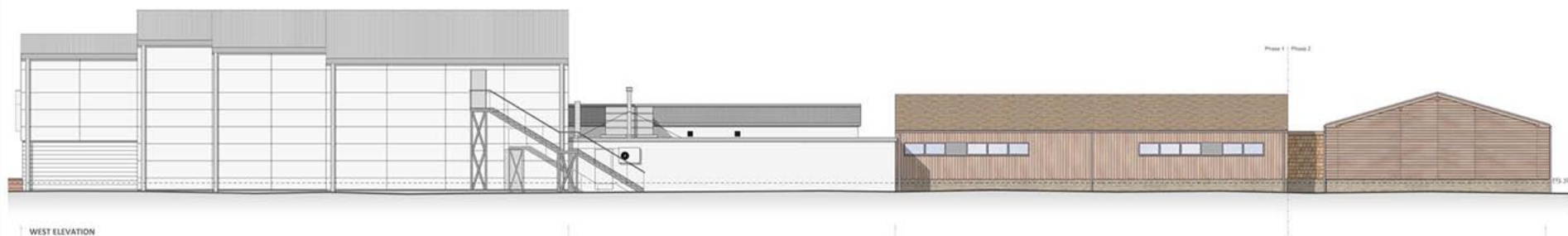




SOUTH ELEVATION



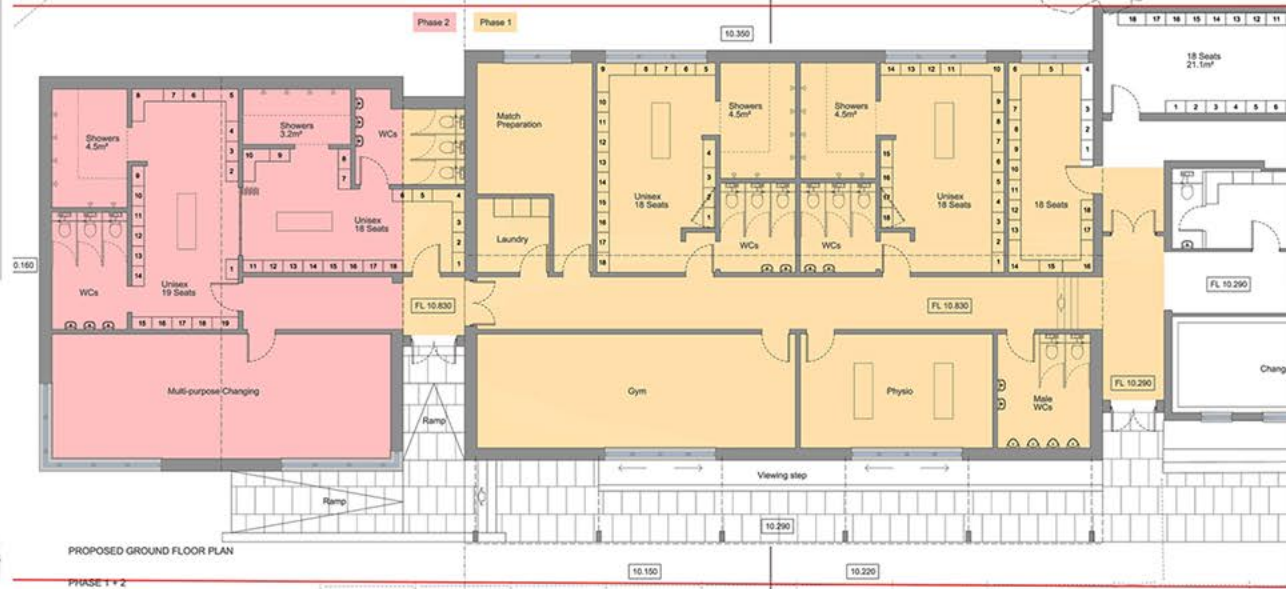
NORTH ELEVATION



WEST ELEVATION



EAST ELEVATION



## CRUFC, Cambridge

Replacement changing rooms and ancillary accommodation for Cambridge Rugby Union Football Club. Planning consent granted in Green Belt.





## Park & Ride, Colchester

New Park & Ride facilities and terminus building at Cuckoo Farm, Colchester. Opened in April 2015.

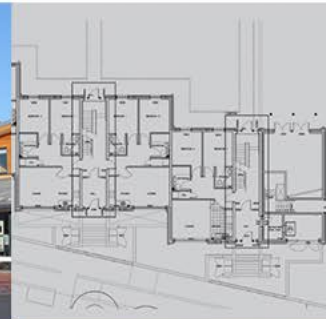






## Cambridge Leisure, **Cambridge**

This development consists of a 9 screen multiplex cinema, 28 lane bowling alley, health & fitness club, restaurants, a 120-bed Hotel and 40 private and affordable flats. Car parking is provided in a multi storey car park. Designed by CMC Architects.







**Director-**  
**Graeme A Lockhart**

**Education:**  
Strathallan School, Perthshire.  
Canterbury College of Art School of  
Architecture

**Qualifications:**  
ACI arb  
Dip Arch ( Canterbury ) RIBA  
Minstd

**Contact:**  
m: 07836 295 589  
graemelockhart@cmparchitects.com

**Overall Experience**

Educated at Strathallan School and Canterbury College of Art, School of Architecture Graeme joined Covell Matthews Wheatley in 1978 as a part2 graduate. Fully qualifying in 1980, was appointed an Associate Director in 1983. He formed a management buyout team with Ivan Baggaley in 1985 to form CMC Architects. CMC grew to become one of the most influential architect practices in Cambridge and the eastern region completing many notable projects over a wide range of building types. The practice was sold to the SMC group in 2005. After a short period as a director for the new business he left to form CMP Architects with Martin Gillespie and Ivan Baggaley in 2008.

An award winning Architect Graeme has designed a large number of significant buildings throughout the Eastern Region.



**Director-**  
**Martin Gillespie**

**Education:**  
Stockport Technical College

**Qualifications:**  
ONC in Building Construction  
HNC in Building Construction

Chartered Institute of Architectural  
Technologists

**Contact:**  
m: 07948 629 360  
martingillespie@cmparchitects.com

**Overall Experience**

Martin has over 30 years' experience as a qualified technician and latterly as a Director at Archial Architects. Martin joined Covell Matthews Wheatley Architects in 1985 and worked with Graeme and Ivan at CMC Architects. He joined CMP Architects as a director in 2010. Martin has a wealth of technical knowledge, in almost all building types from new build to refurbishment, and from modern to Historic. He has Particular experience of complex offices, refurbishments, warehousing, and all forms of residential including student accommodation. Martin's specialisation is in the technical delivery, managing large design teams and forms of building contact particularly where complexity of design, co-ordination and programming are essential.



**Director-**  
**Ivan Baggaley**

**Education:**  
North East London Polytechnic

**Qualifications:**  
Bsc Arch  
FinstD

**Contact:**  
m: 07836 295 591  
ivanbaggaley@cmparchitects.com

**Overall Experience**

With 45 years in the construction industry, Ivan began his career at the Estates department of the University of Cambridge and later at Cambridgeshire County Council Architects department. Educated at North East London Polytechnic he joined Covell Matthews Wheatley Architects in 1976. With Graeme Lockhart he formed a management buyout team to form CMC architects in 1985. Ivan led the team that sold the practice to the SMC group in 2005. He founded CMP Architects with Martin Gillespie and Graeme Lockhart in 2008.

He founded CMP Architects with Martin Gillespie and Graeme Lockhart in 2010. Ivan has particular expertise in project delivery and project management and has been responsible for the delivery of a large range of major building projects over many years.



**Director-**  
**Richard Underwood**

**Education:**  
Anglia Ruskin University

**Qualifications:**  
BSc (Hons) Architectural Technology

**Contact:**  
m: 07917 391 076  
richardunderwood@cmparchitects.com

**Overall Experience**

Richard is a qualified Architectural Technologist with over 18 years' experience in the Construction industry and has recently been appointed a Director of CMP Architects. He has a wealth of technical knowledge across a wide range of sectors including commercial, education, residential, care home, leisure and research and development. Richard has completed several major office developments, University and research & development schemes including both new build and refurbishment projects, where co-ordination and programming were essential. He has also worked with the region's leading contractors to deliver key projects for Babraham Research Campus and developer clients.





**Architect-  
Thomas Mann**

**Education:**  
Oxford Brookes University

**Qualifications:**  
BA Hons in Architecture

Dip Arch in Architecture

MSc Energy Efficiency and Sustainable Design

### Overall Experience

With over 11 years' experience in the Construction Industry Tom began his Architectural career in 2004 and qualified as an Architect in 2009. Since qualifying Tom has gained a Master's degree in Energy Efficiency and Sustainable Design. After working in London, Tom joined CMP Architects in 2013 and has been involved in some key projects within the office. Tom's current main areas of expertise are in the Education, Residential and the Sport + Leisure sectors, both private and public funded. Tom has led and managed the delivery of successful number of complex refurbishment projects with repeated clients. He has recently worked on a number of student feasibility schemes within the Cambridge and Oxford areas.

Tom has an active and dynamic approach to his work and is a highly creative designer with excellent presentation skills, particularly using Revit BIM software. His interest in sustainable design resulted in him designing a 'green toolkit' for implementation into office projects at the early design stage.



**Architectural Technologist-  
Chris Peters**

**Education:**  
Cambridge College of Arts & Technology  
1988

**Qualifications:**  
ONC & HNC in Building Studies

### Overall Experience

30 years in the construction industry with emphasis on design delivery on a wide project base and procurement routes including Design and Construct.



**Architect-  
Patricia Julio**

**Education:**  
Universidade Lusitana de Lisboa

**Qualifications:**  
MArch  
Arb  
RIBA

### Overall Experience

With over 10 years' experience in the construction industry, Patricia began her architecture career in 2005 in Lisbon, Portugal having moved to Boston, USA in 2013. During this time, she has been involved in a wide range of projects scattered all over the world such as residential buildings, affordable housing, luxury houses, mix-used buildings, museums, restaurants, schools, industrial and commercial buildings.

Educated at Universidade Lusitana de Lisboa in Portugal, Patricia gained a Master's degree in architecture in 2010.



**Architectural Technologist-  
Paul Liggins**

**Education:**  
Liverpool John Moores University

**Qualifications:**  
HND Building Surveying

### Overall Experience

With over 10 years' experience in the Construction Industry, Paul began his career in 2002 as a Junior Site Engineer then as a Structural Technician working on residential and industrial units. In 2006 he moved to Mouchel Consulting as an Architectural Technician where he built up a wealth of experience, mainly within the education sector. In recent years, Paul has partnered with a number of practices around Cambridge as a contractor and sub-contractor working on major projects in the public and education sector as well as large-scale residential projects.

Paul has a wealth of technical knowledge and experience in the commercial, education, residential, and leisure sectors both private and public funded.





**Architectural Assistant-  
James Money**

**Education:**  
University of Lincoln – School  
Of Architecture

**Qualifications:**  
BA (Hons) Architecture (Part 1)

**Overall Experience**

With 9 years' experience in the construction industry, James began his architectural career in 2007 and completed his Part 1 Architecture in 2010 after studying full and part-time. James' breadth of experience sits across the spectrum of the architectural profession, starting out and specialising in the design stages from inception to planning, with particular skills in hand and CAD drawings and visuals; helping to develop the 3 dimensionality of design.

James personally handled complex planning applications including all aspects of community engagement. He has also been able to build up experience in the technical stages of the construction process. This has involved managing key areas of team work and communication with clients, consultants and local authority bodies.



**Architectural Assistant-  
Jeremy Robertson**

**Education:**  
University of West of England

**Qualifications:**  
BA (HONS) in Architecture & Planning

**Overall Experience**

Jeremy joined CMP in June 2016. During his time at CMP, Jeremy has already been involved in supporting the team on a wide range of projects, specialising in the design stages from feasibility to planning.

Originally from Cape Town, South Africa Jeremy has a keen interest in residential architecture and his dissertation looked at the evolution of Japanese domestic architecture.



**Architectural Assistant-  
Hayley Heron-Maxwell**

**Education:**  
Hertford Regional College  
North Herts College

**Qualifications:**  
BTEC National Diploma in 3D Design

A University Diploma of Higher  
Education in 3D Design

**Overall Experience**

Hayley has 10 years' experience as an architectural assistant initially working for SMC Covell Matthews, Archial, and then joined CMP Architects in 2010. She has worked on a range of projects from small residential schemes to large mixed use master plans.

Over this period Hayley has built-up master planning and design skills in residential, student accommodation, leisure and workspace projects. As well as CAD skills she has specific expertise in 2D and 3D visualisations.



**Architectural Assistant-  
Matthew Spence**

**Education:**  
University of Kent

**Qualifications:**  
BA (Hons) Architecture – RIBA Part 1

**Overall Experience**

Having graduated from university, Matthew started his architectural career with CMP architects in the summer of 2016. Matthew has worked on a range of design stages in projects from Stage 0 – Strategic Definition to Stage 3 – Developed Design and specific expertise include CAD, 3D modelling and Visuals.



