

LOGIC • EXAMPLE OF PLANT

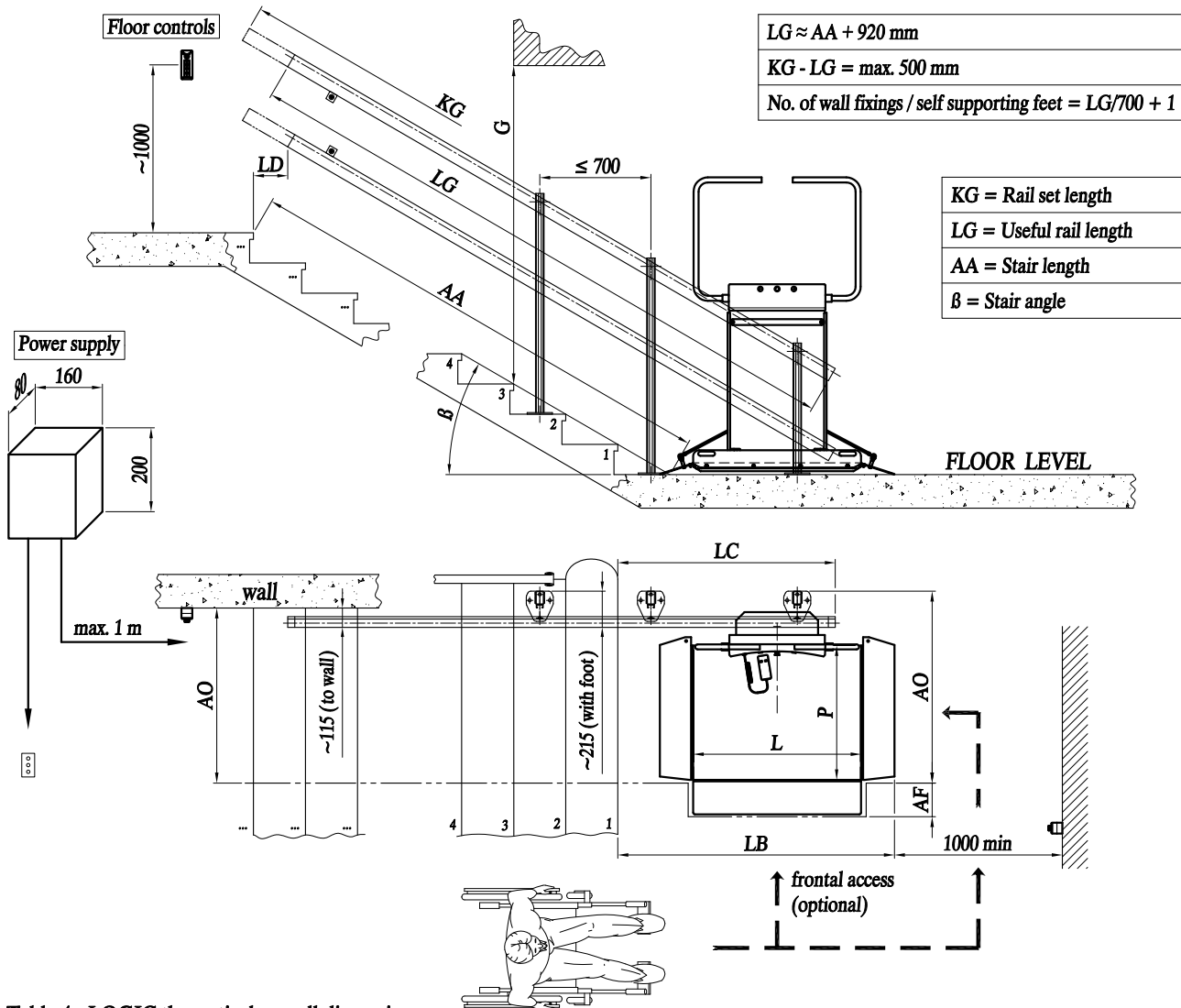


Table 4 - LOGIC theoretical overall dimensions

Platform (length × width)		750×600	750×650	750×700	850×700	1000×800	
β	Stair gradient	from 10° up to 45°					
G	Min. height from step to ceiling	with $\beta=15^\circ$	1630		1645	1665	
		with $\beta=30^\circ$	1820		1850	1890	
		with $\beta=45^\circ$	2170		2220	2295	
LB	Overall dimensions platform in the parking *	with $\beta=15^\circ$	1670		1770	1920	
		with $\beta=30^\circ$	1340		1440	1590	
		with $\beta=45^\circ$	1230		1330	1480	
LC	Overall dimensions rail in the parking *	with $\beta=15^\circ$	1500		1550	1625	
		with $\beta=30^\circ$	1130		1180	1255	
		with $\beta=45^\circ$	960		1010	1085	
LD	Overall dimensions rail to the tall arrival	5÷125		55÷175	130÷250		
AO	Overall dimensions with opened platform **	with fixing to wall	850	900	950	950	1050
		with self-supporting feet	950	1000	1050	1050	1150
AF	Additional dimensions in parking lot with frontal access	+200					

* Theoretical dimensions considering the value of the first rise equal to 180mm.

** The overall dimensions with opened platform AO must be increased of +25mm in case of frontal access (optional).