

RTH 6.46 SH

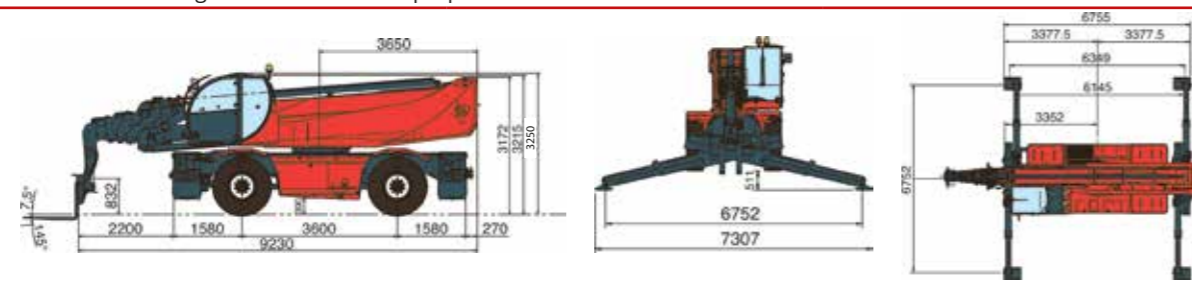
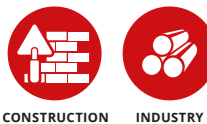
MACHINE MODEL	Rotating telescopic handler	RTH 6.46 SH	
	Maximum lifting capacity	6.000 kg (center of gravity 600 mm)	
	Maximum lifting height	45,6 m	
	Rotation	360° (continuous)	
ENGINE	Type	Mercedes OM 934 LA Stage IV	Mercedes OM 904 LA Stage 3A
	Rated power	170 kW - 231 HP at 2.200 rpm	145 kW - 196 HP at 2.200 rpm
	Maximum torque	900 Nm at 1.200-1.600 rpm	705 Nm at 1.200-1.600 rpm
	Displacement	5,13 l	4,8 l
	Cylinders	4 in line	4 in line
	Fuel	Diesel direct injection turbocharged	Diesel direct injection turbocharged
	Cooling system	Water - intercooler	Water - intercooler
TRANSMISSION	Type	Hydrostatic	
	Model	Bosch - Rexroth	
	Maximum pressure	500 bar	
	Displacements	Variable displacement pump electronically controlled. Variable displacement motor	
AXLES AND BRAKES	Gear box	2 speeds forward-reverse	
	Type	Axles with epicyclic reduction gear	
	Rear axle	Oscillating and steering with hydraulic locking	
	Front axle	Oscillating and steering with automatic levelling +/- 10°	
	Service brake	Hydraulically activated, oil-immersed multi-disc type on each axle	
	Parking brake	Hydraulic with negative action	
PERFORMANCE	Tyres dimensions	17.5 R 25	
	Max. travel speed	25 km/h	
	Drawbar pull	121 kN	
	Gradeability	30%	
WEIGHTS	Turning radius (end of forks)	7.710 mm	
	Total unladen	30.600 kg	
	Front axle unladen (boom retracted and lowered)	15.300 kg	
TANKS CAPACITIES	Rear axle unladen (boom retracted and lowered)	15.300 kg	
	Fuel tank	280 l	280 l
	AdBlue	40 l	n.a.
	Hydraulic oil tank	250 l	250 l
	Engine oil tank	20,5 l	16 l
HYDRAULIC CIRCUIT	Cooling liquid	36 l	36 l
	Max. operating system pressure	350 bar	
	Circuit type	Load sensing	
	Service pump	Bosch Rexroth - Variable displacement	
	Controls for boom and turret movements	Danfoss - Electroproportional valve SIL 2	
	Controls for stabilizers	Bosch Rexroth - Electro-hydraulics controls	
CONFORMITY TO STANDARDS	Movements control	2 joystick Danfoss with two shafts with dead man safety device Management with CAN bus technology	
	EN 13849: concerning the safety of all controls of the machine		
	EN 13000: concerning the standard of hydraulic cranes		
	EN 280: concerning the standard of aerial platforms FOPS/ROPS		
	EU 2016/1628: concerning engine emissions standards		
EN 1459-2: concerning the standard of self-propelled variable reach trucks			

The data in this brochure are informative and subject to change without notice
REV07

6.46SH



MAIN SECTORS



Magni Telescopic Handlers srl

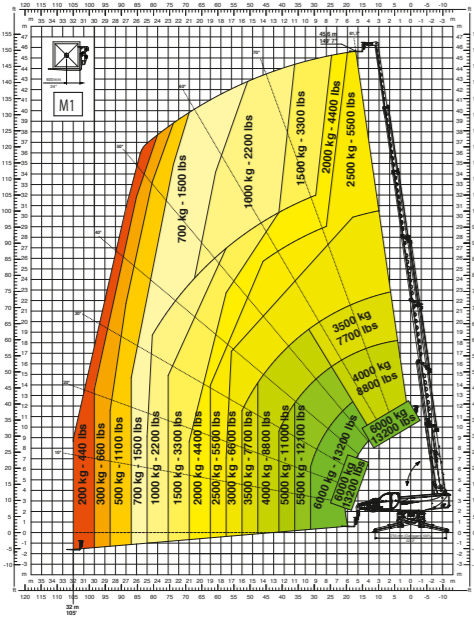
Via Magellano, 22 - 41013 Castelfranco Emilia, Modena, Italia - Tel: +39 059 8630811 - Fax: +39 059 8638012
commerciale@magnith.com - www.magnith.com



Maximum lifting height: 45,6 m
Maximum reach: 32 m
Electronically controlled hydrostatic transmission
Automatic levelling device
Scissors stabilizers

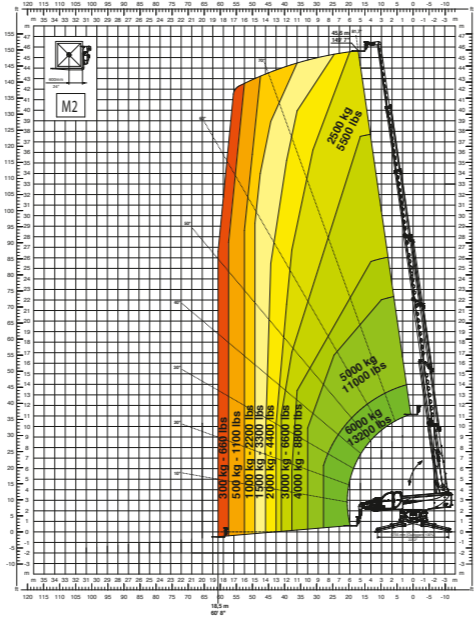
360° FULLY EXTENDED STABILISERS
LOAD CHART WITH FORKS **M1**

ON STABILISERS - M1



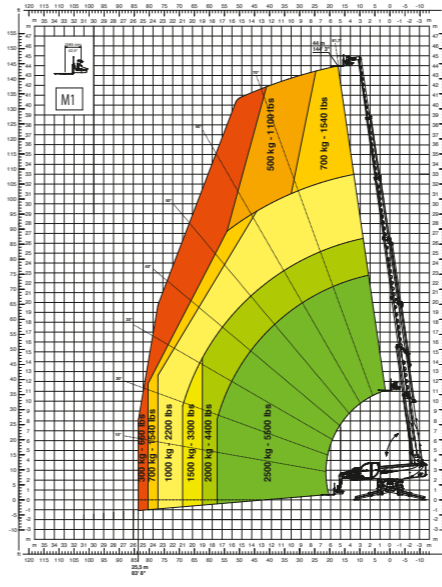
360° FULLY EXTENDED STABILISERS
LOAD CHART WITH FORKS **M2**

ON STABILISERS - M2



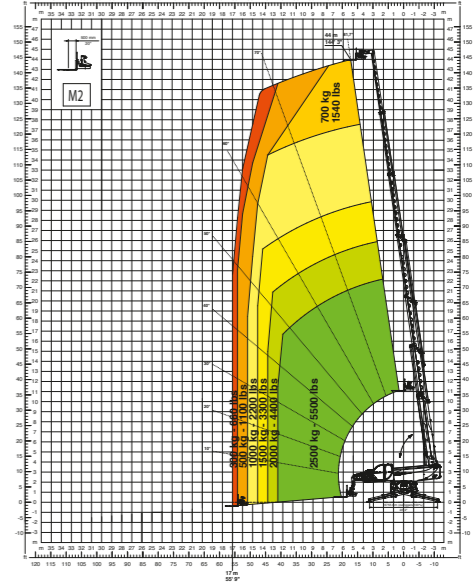
ROTATING FORKCARRIAGE **2500 Kg - M1**

RFC2,5 M1



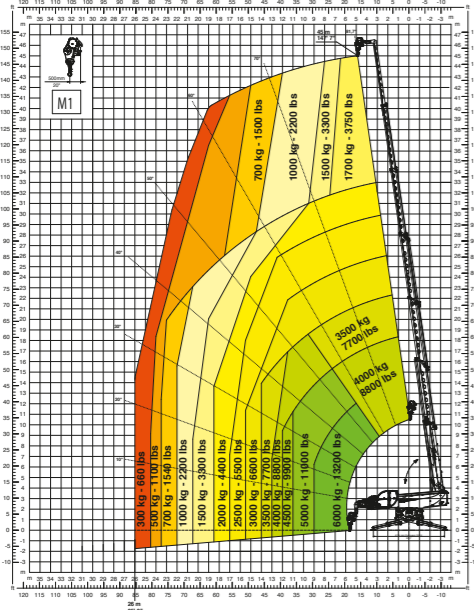
ROTATING FORKCARRIAGE **2500 Kg - M2**

RFC2,5 M2



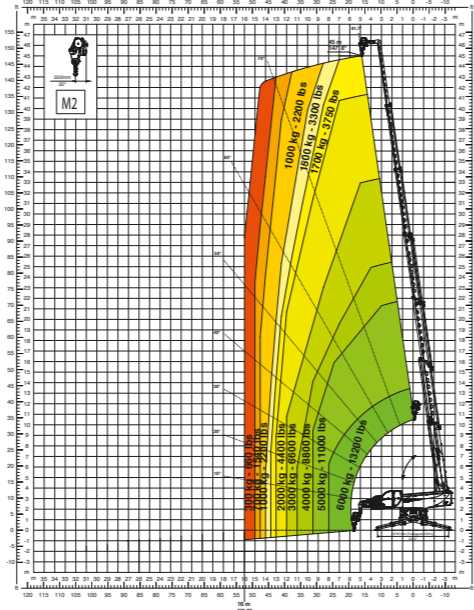
WINCH **6000 Kg - M1**

W6 M1



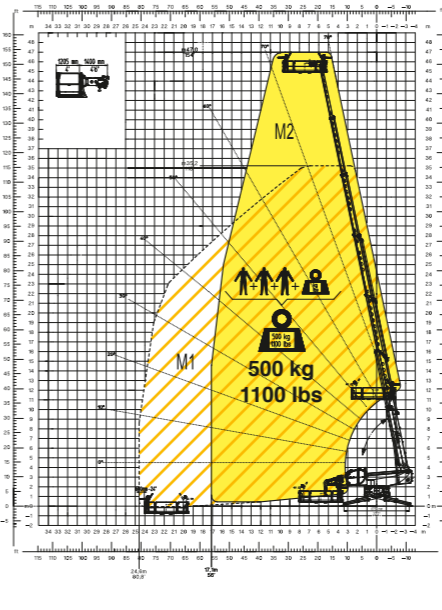
WINCH **6000 Kg - M2**

W6 M2



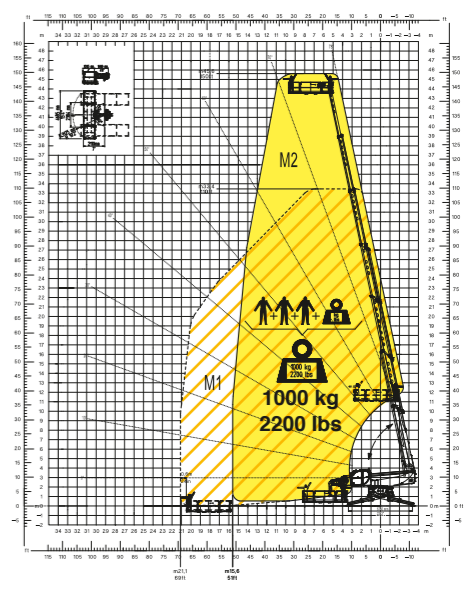
ROTATING EXTENDABLE MEN PLATFORM **500 Kg**

REP 2-4,5



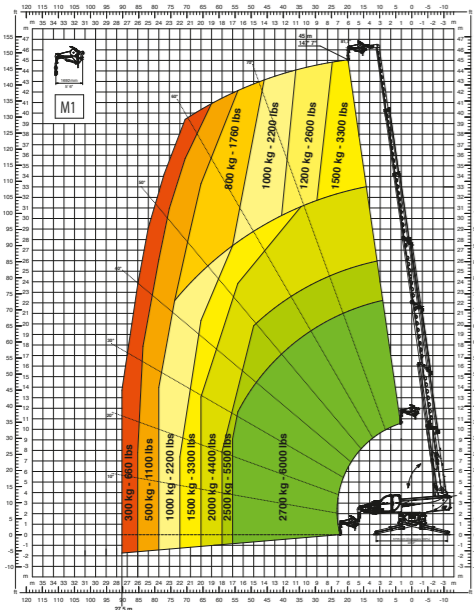
ROTATING EXTENDABLE MEN PLATFORM **1000 Kg**

REP 10.2-4,7



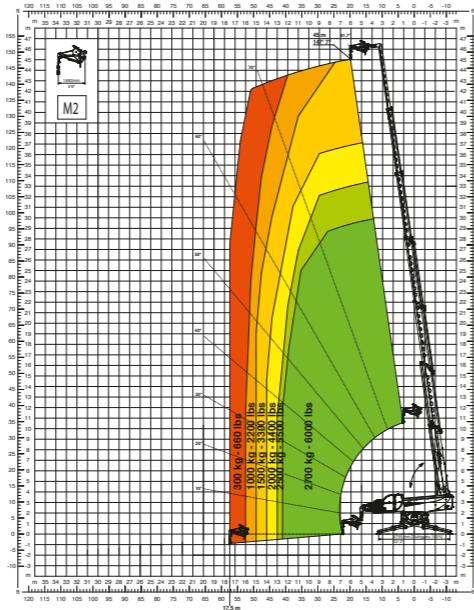
JIB WINCH **2700 Kg - M1**

JW2700 - M1



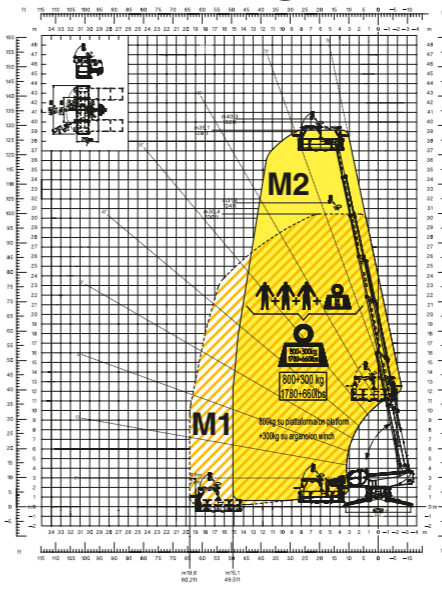
JIB WINCH **2700 Kg - M2**

JW2700 - M2



PLATFORM 4,7 M **800 Kg**
WITH WINCH **300 Kg**

REP 8.2-4,7 W0,3



TELESCOPIC PLATFORM **200 Kg - 10 m**

TP 2.10

