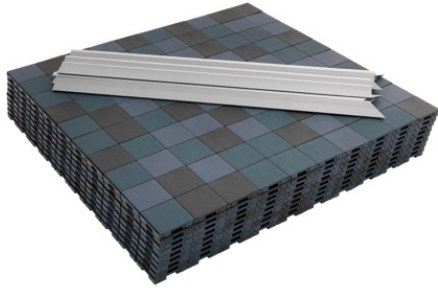
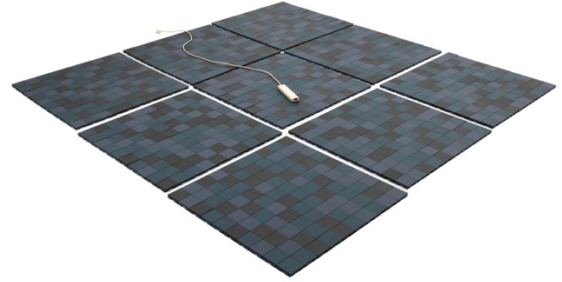


Cableflor Assembly Guide



Floor arrives in metre squares



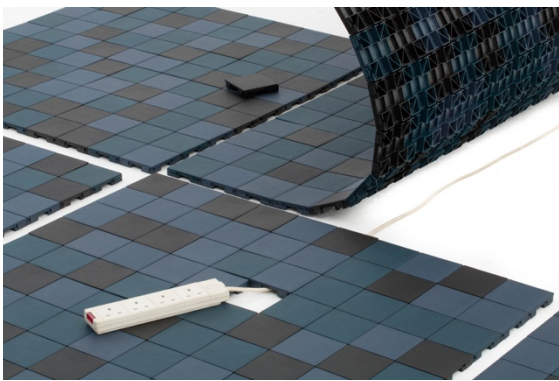
Lay floor out, remove tiles where power req'd



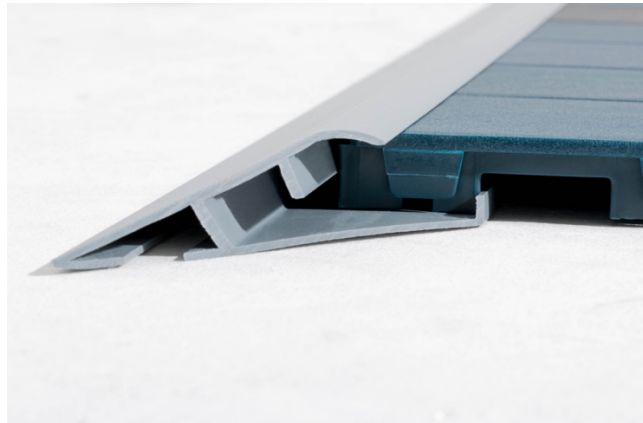
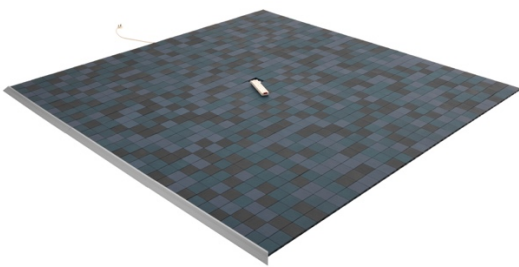
Make sure each sheet is the same way round – there are slots on two sides and tabs on the other two sides. The tabs push into the slots.



Run the cables under the floor prior to clipping the metre sections together. Pull the cables tight to keep them in the channel underneath.



Run cables back to power source, plug in and check they are live. Clip the remainder of the flooring together.



Clip the edging to the flooring – the upstand on the base clicks behind the foot of the floor to stop it from being kicked off. The corners are mitred.

Tel: 01293 852 100