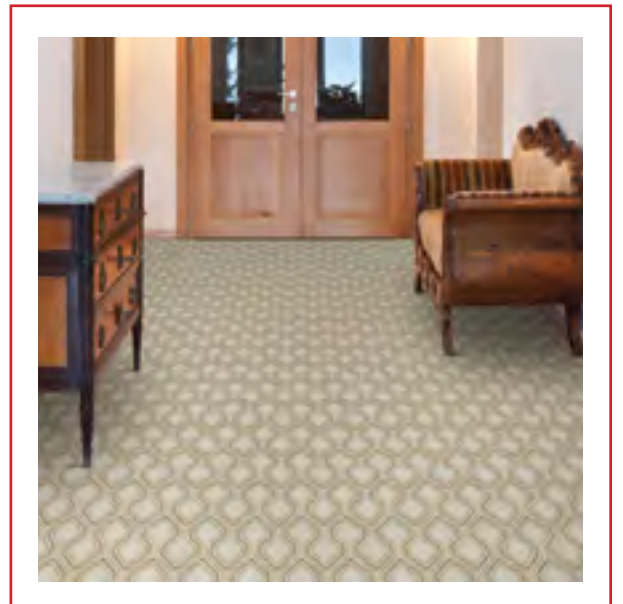


2020

# BROADLOOM SPECIAL BUYS

VOLUME 2 OF 2









# BROADLOOM SPECIAL BUYS

---

CREATIONS™	11	KONA	22	SANTA CRUZ
1 AUGUSTA FLORAL	12	LAKELY	23	SANTA MARIA
2 BAINBRIDGE TRELLIS	13	LANAI	24	SANTA MONICA
3 CALISTOGA	14	MALIA	25	SAUSALITO
4 CATALINA	15	MENDOCINO	26	SPARKLE
5 CELESTIAL	16	NALA	27	TELLURIDE
6 GABRIELLE	17	NICOLE	28	THOUSAND OAKS
7 HOLLYWOOD	18	PALLADINO	29	VIENNA
8 KALANI	19	PALOS VERDES		
9 KILLINGTON	20	RIVERSTONE		
10 KIMBA	21	ROYAL TARTAN		





# **BROADLOOM** **SPECIAL BUYS**

---

## **PURITY®**

**31** ACACIA

**32** ASH RIB

**33** AUBURN

**34** AUBURN STRIPE

**35** BALSA

**36** BEECH

**37** BROOKLINE

**38** BROOKLINE  
STRIPE

**39** BUCKEYE

**40** CATALPA

**41** COTTONWOOD

**42** HEMLOCK

**43** HICKORY

**44** JUNIPER

**45** LAUREL

**46** LINDEN

**47** MAGNOLIA

**48** MYRTLE

**49** OAKLEY

**50** SHERMAN

**51** SPRUCE

**52** SYCAMORE

**53** WILLOW



# CREATIONS™

---



# AUGUSTA FLORAL

---

**BRAND**

*Creations™*

**PILE**

*100% Heat-Set Courtron™ Polypropylene*

**WEAVE**

*Face-to-Face Woven Wilton*

**PATTERN REPEAT**

*19.68" W x 19.68" L (Straight Match)*

**WIDTH**

*13'2" (4 Meters)*



**CB43/0001**

Ecru



# BAINBRIDGE TRELLIS

---

**BRAND**

*Creations™*

**PILE**

*100% Heat-Set Courtron™ Polypropylene*

**WEAVE**

*Face-to-Face Woven Wilton*

**PATTERN REPEAT**

*10.47" W x 10.47" L (Straight Match)*

**WIDTH**

*13'2" (4 Meters)*



**CB64/0002**

Ruby

# CALISTOGA

---

**BRAND**

*Creations™*

**PILE**

*100% Nylon*

**CONSTRUCTION**

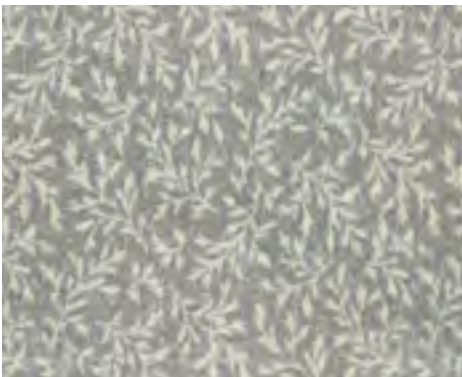
*Tufted Cut-Pile Print*

**PATTERN REPEAT**

*13.11" W x 11.18" L (Straight Match)*

**WIDTH**

*13'2" (4 Meters)*



**CBJ0/0001**

Grey



**CBJ0/0002**

Soft Grey



**CBJ0/0003**

Chocolate



**CBJ0/0004**

Merlot



**CBJ0/0005**

Midnight



**CBJ0/0006**

Storm



# CATALINA

---

**BRAND**

*Creations™*

**PILE**

*100% Nylon*

**CONSTRUCTION**

*Tufted Cut-Pile Print*

**PATTERN REPEAT**

*13.11" W x 12.44" L (Straight Match)*

**WIDTH**

*13'2" (4 Meters)*



**CB10/0003**

Chocolate



**CB10/0004**

Cappuccino

# CELESTIAL

---

**BRAND**

*Creations™*

**PILE**

*100% Heat-Set Courtron™ Polypropylene*

**WEAVE**

*Face-to-Face Woven Wilton*

**PATTERN REPEAT**

*19.5" W x 19.5" L (Straight Match)*

**WIDTH**

*13'2" (4 Meters)*



**CB27/0002**

Gold



# GABRIELLE

---

**BRAND**

*Creations™*

**PILE**

*100% Nylon*

**CONSTRUCTION**

*Tufted Loop Pile Print*

**PATTERN REPEAT**

*6.5" W x 6.5" L (Straight Match)*

**WIDTH**

*13'2" (4 Meters)*



**CB37/0080**

Camel on White



**CB37/0083**

Evergreen on White



**CB37/0093**

Midnight



**CB37/0094**

Dresden Blue

# HOLLYWOOD

---

**BRAND**

*Creations™*

**PILE**

*100% Soft Polyester*

**WEAVE**

*Face-to-Face Woven Wilton*

**PATTERN REPEAT**

*6.29" W x 8.26" L (Straight Match)*

**WIDTH**

*13'2" (4 Meters)*



**CB4W/0003**

Dark Grey



# KALANI

---

**BRAND**

*Creations™*

**PILE**

*100% Courtron™ Polypropylene*

**WEAVE**

*Structured Flatwoven*

**PATTERN REPEAT**

*2.50" W x 1.13" L (Straight Match)*

**WIDTH**

*13'2" (4 Meters)*



**CBI1/0002**

Teak



**CBI1/0003**

Palm



# KILLINGTON

---

**BRAND**

*Creations™*

**PILE**

*80% Heat-Set Courtron™ Polypropylene /  
20% Polyester*

**WEAVE**

*Face-to-Face Wilton Woven Shag*

**PATTERN REPEAT**

*No Repeat*

**WIDTH**

*13'2" (4 Meters)*



**CBF1/0002**

Mink



**CBF1/0005**

Cocoa



# KIMBA

---

**BRAND**

*Creations™*

**PILE**

*100% Heat-Set Courtron™ Polypropylene*

**WEAVE**

*Face-to-Face Woven Wilton*

**PATTERN REPEAT**

*13.12" W x 18.75" L (Straight Match)*

**WIDTH**

*13'2" (4 Meters)*



**CBE9/0005**

Camel

# KONA

---

**BRAND**

*Creations™*

**PILE**

*100% Courtron™ Polypropylene*

**WEAVE**

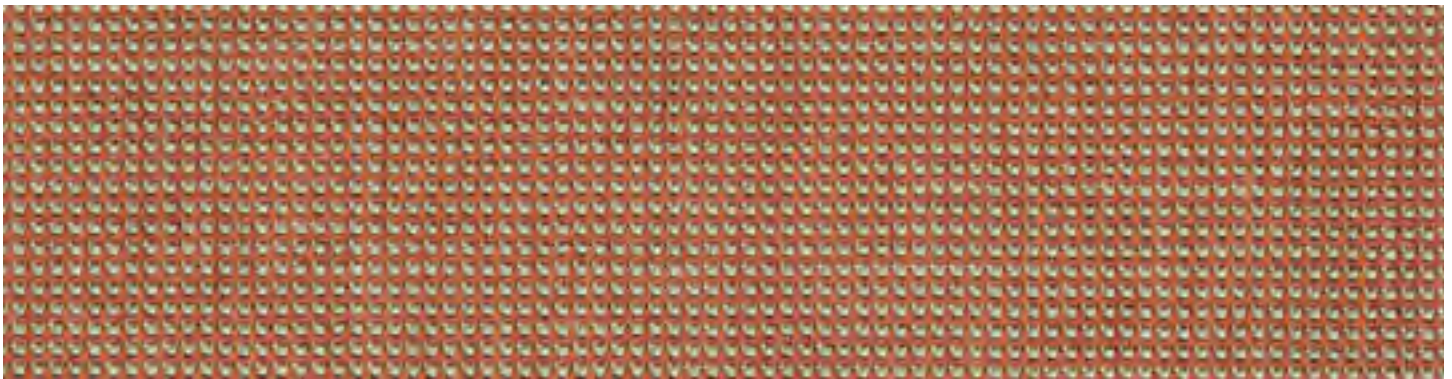
*Structured Flatwoven*

**PATTERN REPEAT**

*.25" W x .25" L (Straight Match)*

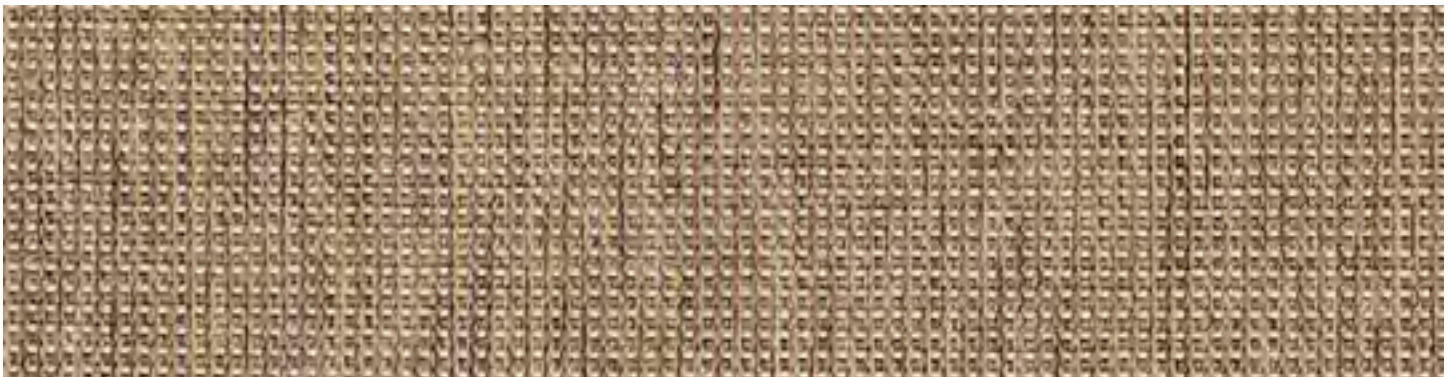
**WIDTH**

*13'2" (4 Meters)*



**CBI3/0002**

Teak



**CBI3/0004**

Rattan



# LAKELY

---

**BRAND**

*Creations™*

**PILE**

*100% Heat-Set Courtron™ Polypropylene*

**WEAVE**

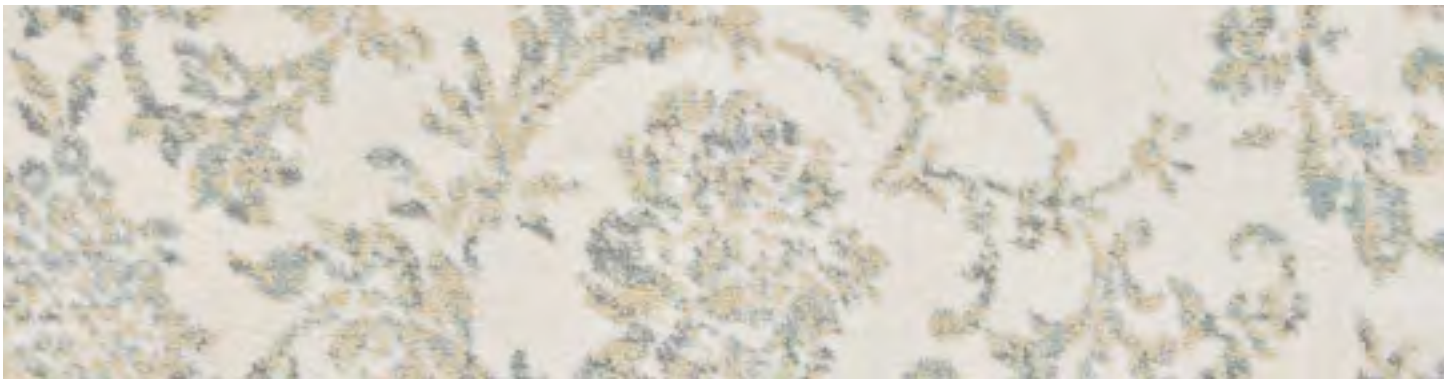
*Face-to-Face Woven Wilton Featuring  
One Million Points Per Square Meter*

**PATTERN REPEAT**

*31.49" W x 23.62" L (Straight Match)*

**WIDTH**

*13'2" (4 Meters)*



**CBK2/0002**

Dew

# LANAI

---

**BRAND**

*Creations™*

**PILE**

*100% Courtron™ Polypropylene*

**WEAVE**

*Structured Flatwoven*

**PATTERN REPEAT**

*6.50" W x 5" L (Half-Drop Match)*

**WIDTH**

*13'2" (4 Meters)*



**CBI4/0002**

Teak



**CBI4/0004**

Rattan



# MALIA

---

**BRAND**

*Creations™*

**PILE**

*100% Courtron™ Polypropylene*

**WEAVE**

*Structured Flatwoven*

**PATTERN REPEAT**

*1.50" W x 2.94" L (Straight Match)*

**WIDTH**

*13'2" (4 Meters)*



**CBI2/0002**

Teak



**CBI2/0003**

Palm



**CBI2/0004**

Rattan

# MENDOCINO

---

**BRAND**

*Creations™*

**PILE**

*100% Premium Nylon – Type 6,6*

**CONSTRUCTION**

*Tufted Loop Pile Print*

**PATTERN REPEAT**

*4.25" W x 5" L (Straight Match)*

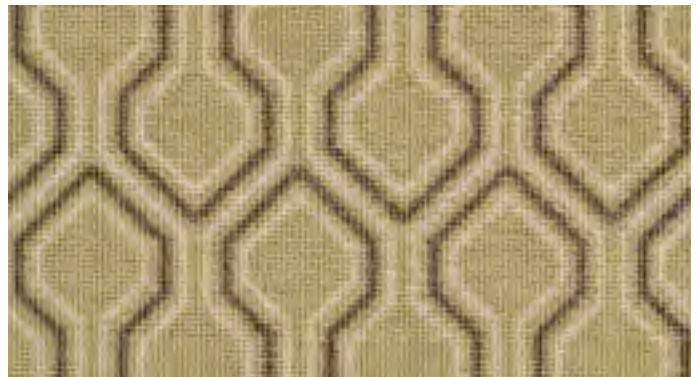
**WIDTH**

*13'2" (4 Meters)*



**CBH6/0001**

Beige



**CBH6/0002**

Goldenrod



**CBH6/0006**

Khaki



# NALA

---

**BRAND**

*Creations™*

**PILE**

*100% Heat-Set Courtron™ Polypropylene*

**WEAVE**

*Face-to-Face Woven Wilton*

**PATTERN REPEAT**

*19.68" W x 15" L (Straight Match)*

**WIDTH**

*13'2" (4 Meters)*



**CBE1/0005**

Camel

# NICOLE

---

**BRAND**

*Creations™*

**PILE**

*100% Nylon*

**CONSTRUCTION**

*Tufted Loop Pile Print*

**PATTERN REPEAT**

*1.75" W x 1.75" L (Straight Match)*

**WIDTH**

*13'2" (4 Meters)*



**CB97/0003**  
Evergreen on White



**CB97/0004**  
Camel on White



**CB97/0006**  
Chocolate



**CB97/0008**  
Dresden Blue



**CB97/0009**  
Midnight



**CB97/0010**  
Celadon



**CB97/0011**  
Evergreen



# PALLADINO

---

## BRAND

*Creations™*

## PILE

*100% Heat-Set Courtron™ Polypropylene*

## WEAVE

*Face-to-Face Woven Wilton Featuring  
A Unique Two Color, Two-Ply Twist*

## PATTERN REPEAT

*Genoa - 3.94" W x 3.94" L (Straight Match)*

*Sorano - 13.25" W x 25" L (Straight Match)*

## WIDTH

*13'2" (4 Meters)*



## **CBD8/0003**

*Genoa/Ebony*



## **CBD9/0002**

*Sorano/Steel Blue*

# PALOS VERDES

---

**BRAND**

*Creations™*

**PILE**

*100% Premium Nylon – Type 6,6*

**CONSTRUCTION**

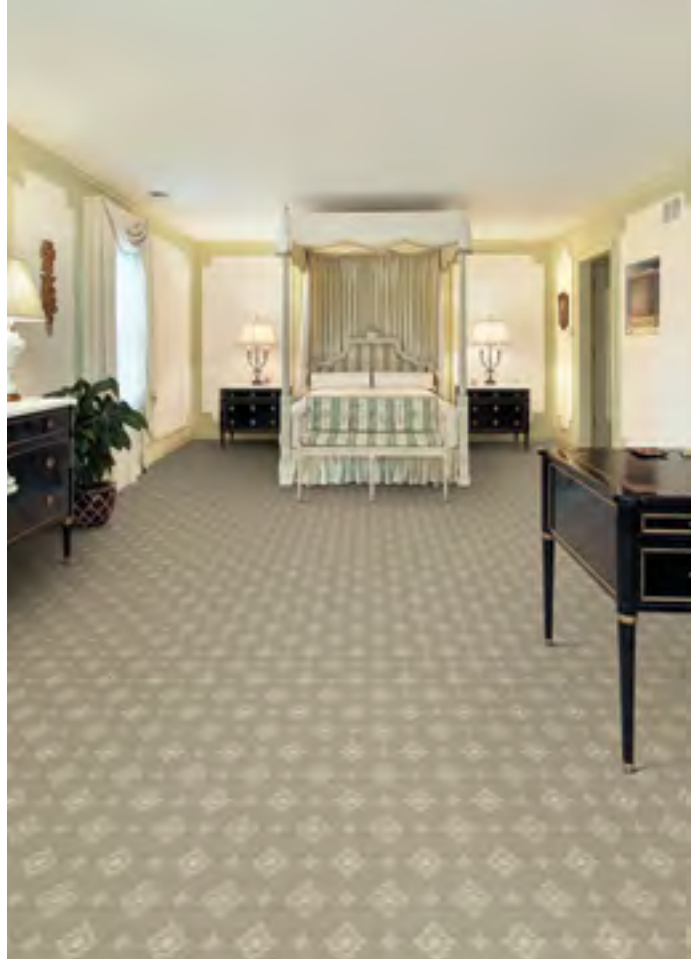
*Tufted Loop Pile Print*

**PATTERN REPEAT**

*6.37" W x 6.5" L (Straight Match)*

**WIDTH**

*13'2" (4 Meters)*



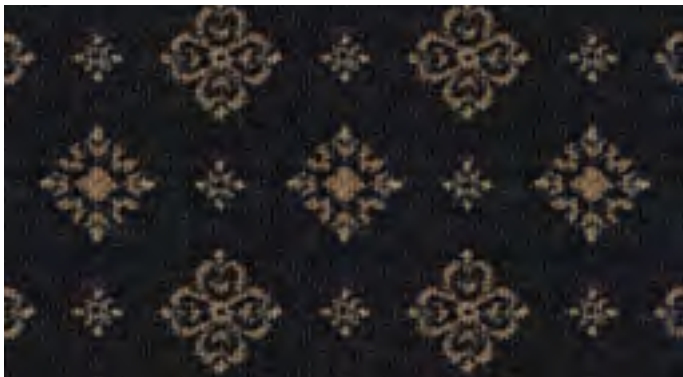
**CBH7/0001**

Beige



**CBH7/0002**

Taupe



**CBH7/0005**

Midnight



**CBH7/0006**

Khaki



# RIVERSTONE

---

**BRAND**

*Creations™*

**PILE**

*100% Heat-Set Courtron™ Polypropylene*

**WEAVE**

*Face-to-Face Woven Wilton Hard-Twist Yarn Effect*

**PATTERN REPEAT**

*Random Repeat*

**WIDTH**

*13'2" (4 Meters)*



**CBA7/0002**

Golden Bark



**CBA7/0003**

Chive



# ROYAL TARTAN

---

**BRAND**

*Creations™*

**PILE**

*100% Heat-Set Courtron™ Polypropylene*

**WEAVE**

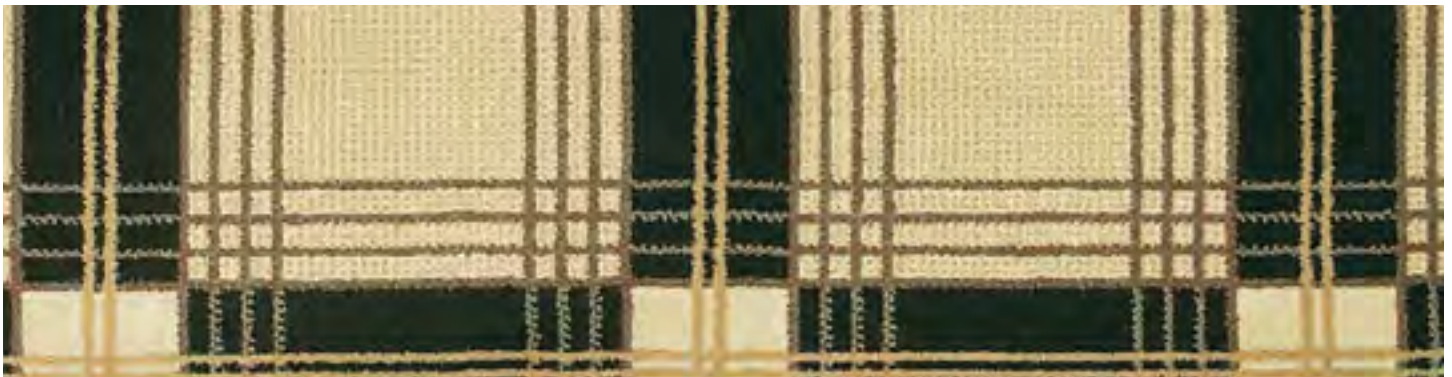
*Face-to-Face Woven Wilton Featuring  
One Million Points Per Square Meter*

**PATTERN REPEAT**

*9.84" W x 9.84" L (Straight Match)*

**WIDTH**

*13'2" (4 Meters)*



**CB38/0504**

Onyx



**CB38/6489**

Sage



# SANTA CRUZ

---

## BRAND

*Creations™*

## PILE

*100% Premium Nylon – Type 6,6*

## CONSTRUCTION

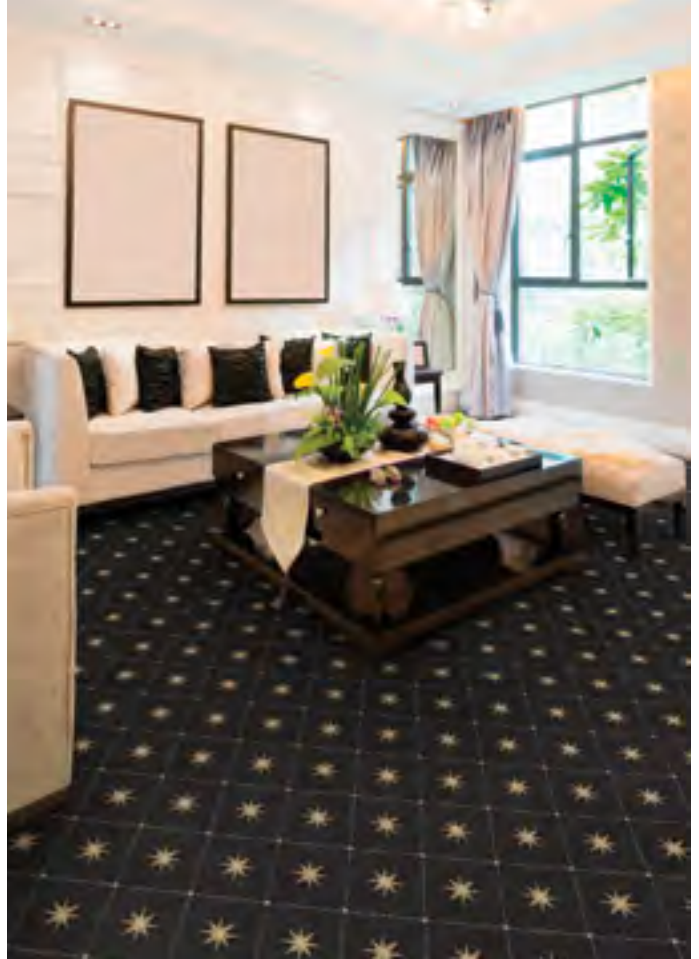
*Tufted Loop Pile Print*

## PATTERN REPEAT

*8.5" W x 4.37" L (Straight Match)*

## WIDTH

*13'2" (4 Meters)*



**CBH8/0002**

Goldenrod



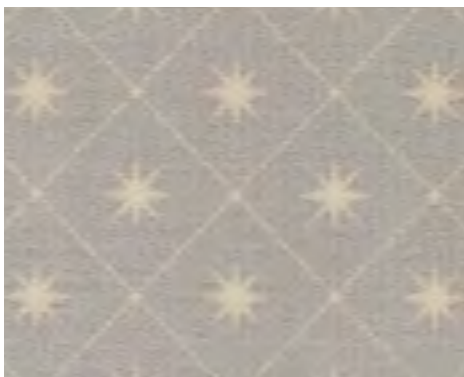
**CBH8/0003**

Taupe



**CBH8/0004**

Cranberry



**CBH8/0005**

Silver



**CBH8/0006**

Khaki

# SANTA MARIA

---

**BRAND**

*Creations™*

**PILE**

*100% Nylon*

**CONSTRUCTION**

*Tufted Cut-Pile Print*

**PATTERN REPEAT**

*39.37" W x 39.88" L (Straight Match)*

**WIDTH**

*13'2" (4 Meters)*



**CBI8/0001**

Grey



**CBI8/0002**

Soft Grey



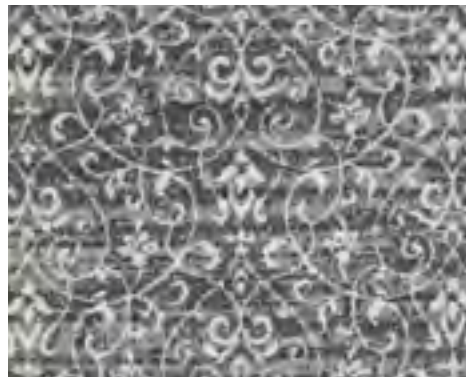
**CBI8/0003**

Chocolate



**CBI8/0005**

Midnight



**CBI8/0006**

Slate



# SANTA MONICA

---

## BRAND

*Creations™*

## PILE

*100% Premium Nylon – Type 6,6*

## CONSTRUCTION

*Tufted Loop Pile Print*

## PATTERN REPEAT

*8.5" W x 10.5" L (Half-Drop Match)*

## WIDTH

*13'2" (4 Meters)*



## **CBH4/0003**

Toast



## **CBH4/0004**

Cranberry

# SAUSALITO

---

**BRAND**

*Creations™*

**PILE**

*100% Nylon*

**CONSTRUCTION**

*Tufted Cut-Pile Print*

**PATTERN REPEAT**

*19.68" W x 19.29" L (Straight Match)*

**WIDTH**

*13'2" (4 Meters)*



**CBI9/0002**

Soft Grey



**CBI9/0004**

Merlot



**CBI9/0005**

Midnight



# SPARKLE

---

**BRAND**

*Creations™*

**PILE**

*100% Heat-Set Courtron™ Polypropylene  
with Lurex Accents*

**WEAVE**

*Face-to-Face Woven Wilton Shag*

**PATTERN REPEAT**

*No Repeat*

**WIDTH**

*13'2" (4 Meters)*



**CBS6/0003**

Gold

# TELLURIDE

---

**BRAND**

*Creations™*

**PILE**

*100% Heat-Set Courtron™ Polypropylene*

**WEAVE**

*Face-to-Face Woven Wilton Shag*

**PATTERN REPEAT**

*No Repeat*

**WIDTH**

*13'2" (4 Meters)*



**CBI5/0004**

Ash



# THOUSAND OAKS

---

**BRAND**

*Creations™*

**PILE**

*100% Premium Nylon – Type 6,6*

**CONSTRUCTION**

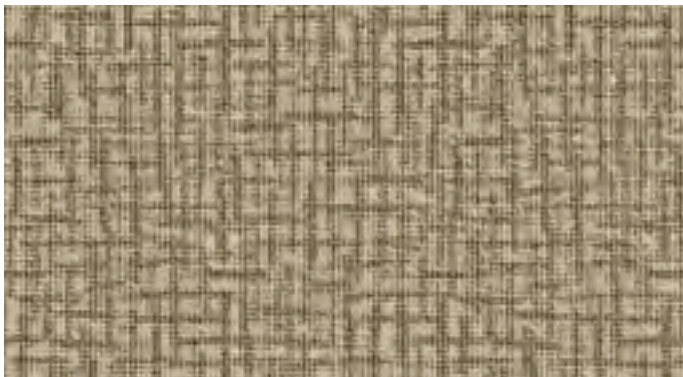
*Tufted Loop Pile Print*

**PATTERN REPEAT**

*19" W x 13" L (Straight Match)*

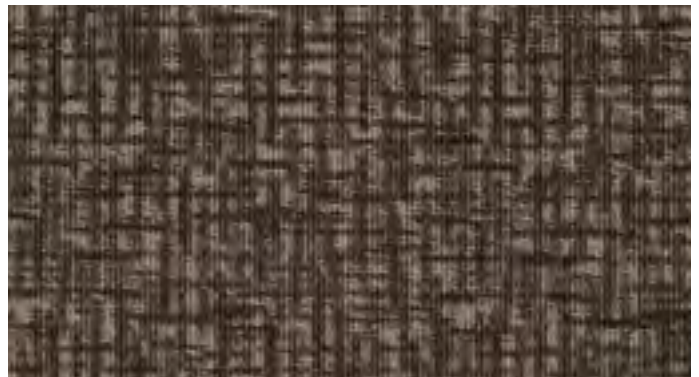
**WIDTH**

*13'2" (4 Meters)*



**CBH9/0002**

Goldenrod



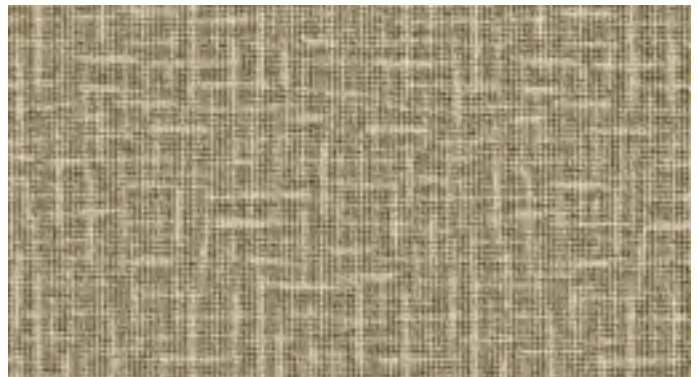
**CBH9/0003**

Toast



**CBH9/0006**

Buttercream



**CBH9/0007**

Khaki

# VIENNA

---

**BRAND**

*Creations™*

**PILE**

*100% Heat-Set Courtron™ Polypropylene*

**WEAVE**

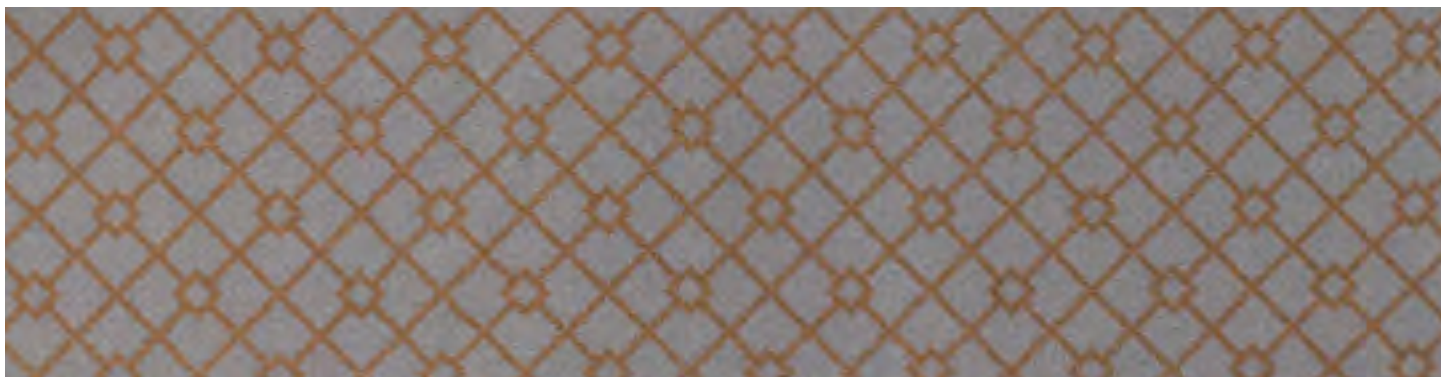
*Face-to-Face Woven Wilton Featuring  
A Unique Two Color, Two-Ply Twist*

**PATTERN REPEAT**

*1.57" W x 3.14" L (Half-Drop Match)*

**WIDTH**

*13'2" (4 Meters)*



**CBB4/0001**

Steel Blue/Brown



# PURITY®

---



# ACACIA

---

**BRAND**

*Purity®*

**PILE**

*50% Natural Wool / 50% Natural Viscose*

**WEAVE**

*Hand-Loomed Cut and Loop Pile*

**PATTERN REPEAT**

*.81" Length*

**WIDTH**

*15' \* PT26/0005 Only Available in 13'2" Width*



**PT26/0003**

Oatmeal



**PT26/0004**

Light Beige



**PT26/0005 \***

Dark Beige



# ASH RIB

---

**BRAND**

*Purity®*

**PILE**

*100% Pure Wool*

**WEAVE**

*Hand-Loomed Cut and Loop Pile*

**PATTERN REPEAT**

*1.18" Length*

**WIDTH**

*15'*



**PT38/0003**

Charcoal

# AUBURN

---

**BRAND**

*Purity®*

**PILE**

*100% Pure Wool*

**WEAVE**

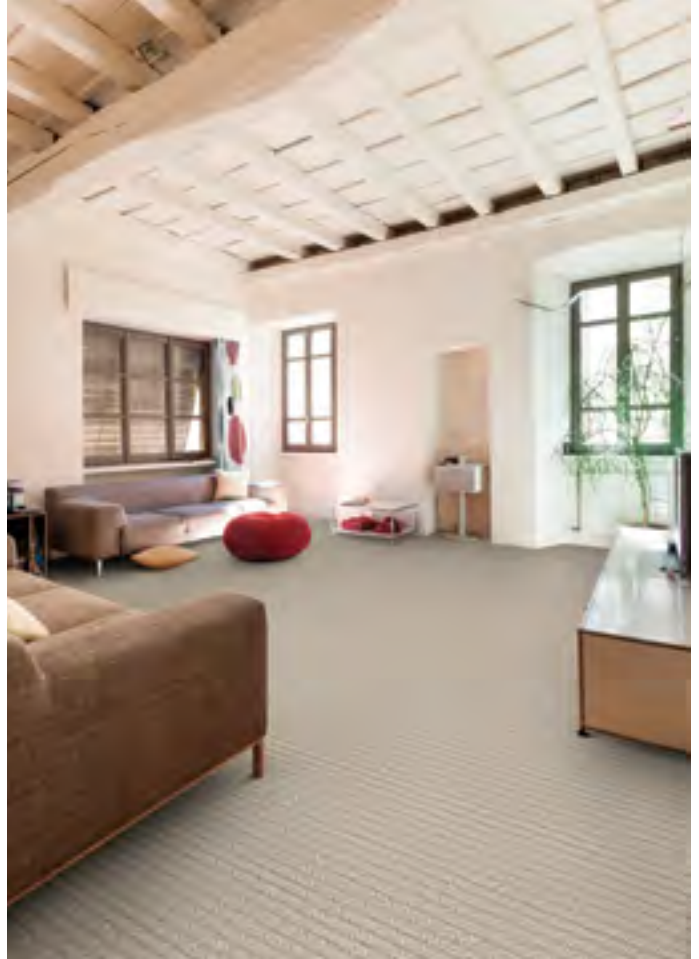
*Hand-Loomed Loop Pile*

**PATTERN REPEAT**

*.50" W x 1" L (Straight Match)*

**WIDTH**

*13'2" (4 Meters)*



**5021/0002**

Latté



# AUBURN STRIPE

---

**BRAND**

*Purity®*

**PILE**

*100% Pure Wool*

**WEAVE**

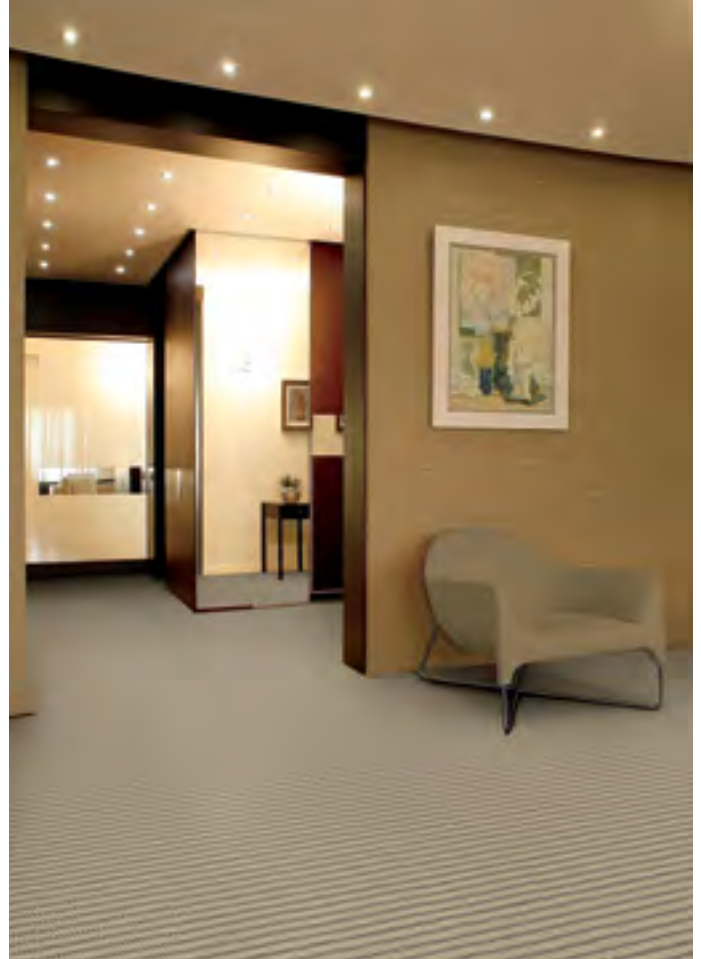
*Hand-Loomed Loop Pile*

**PATTERN REPEAT**

*.50" W x 1" L (Straight Match)*

**WIDTH**

*13'2" (4 Meters)*



**5022/0002**

Latté/Mocha

# BALSA

---

**BRAND**

*Purity®*

**PILE**

*100% Undyed Natural Wool*

**WEAVE**

*Axminster Cut-Pile*

**PATTERN REPEAT**

*39.50" W x 36" L (Straight Match)*

**WIDTH**

*13'2" (4 Meters)*



**PT09/0002**

Turtledove



**PT09/0003**

Camel



**PT09/0004**

Silver



# BEECH

---

**BRAND**

*Purity®*

**PILE**

*100% Undyed Natural Wool*

**WEAVE**

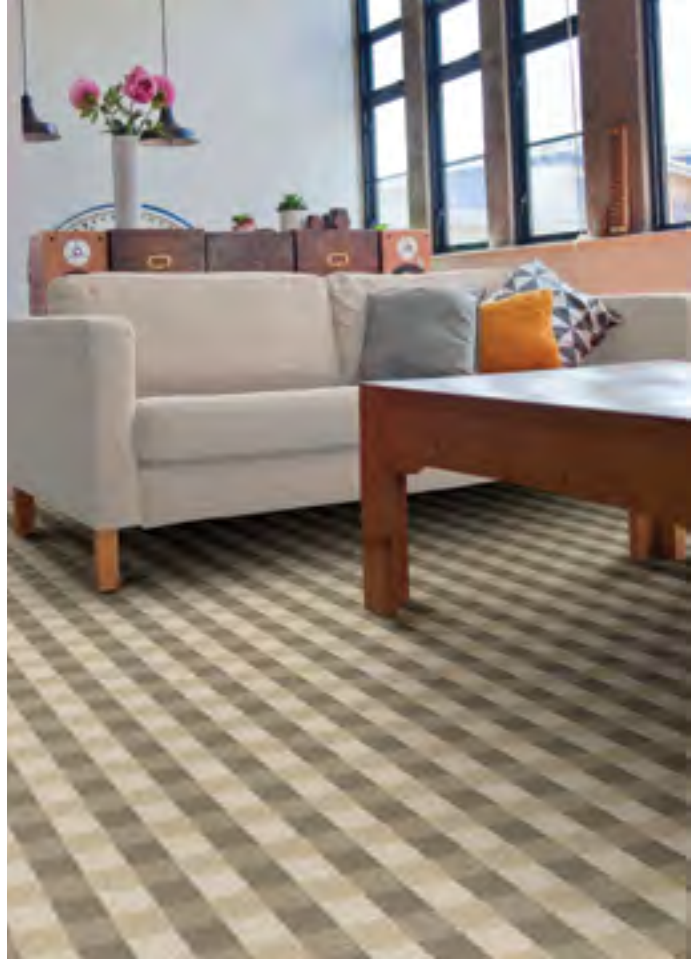
*Hand-Loomed Cut and Loop Pile*

**PATTERN REPEAT**

*5.25" W x 5.25" L (Straight Match)*

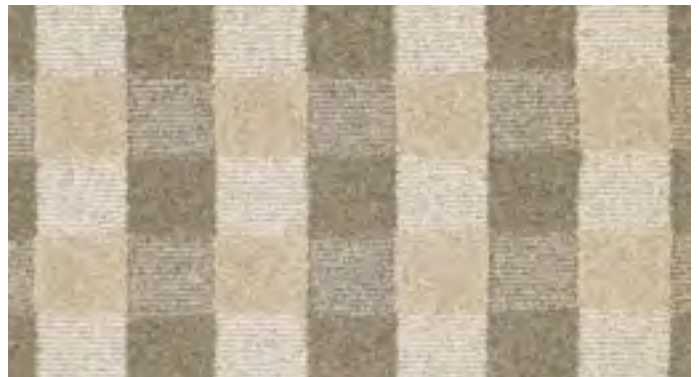
**WIDTH**

*15'*



**PT29/0002**

Taupe



**PT29/0003**

Steel Grey



**PT29/0004**

Oatmeal

# BROOKLINE

---

**BRAND**

*Purity®*

**PILE**

*100% Pure Wool*

**WEAVE**

*Hand-Loomed Loop Pile*

**PATTERN REPEAT**

*No Repeat*

**WIDTH**

*13'2" (4 Meters)*



**2637/0004**

Taupe



# BROOKLINE STRIPE

---

**BRAND**

*Purity®*

**PILE**

*100% Pure Wool*

**WEAVE**

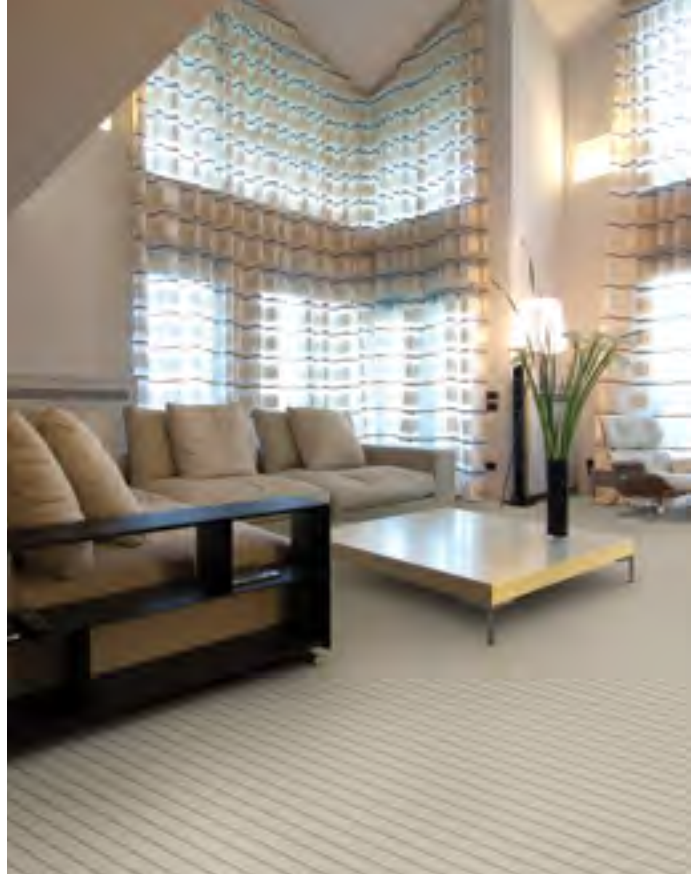
*Hand-Loomed Loop Pile*

**PATTERN REPEAT**

*4" W x .62" L (Straight Match)*

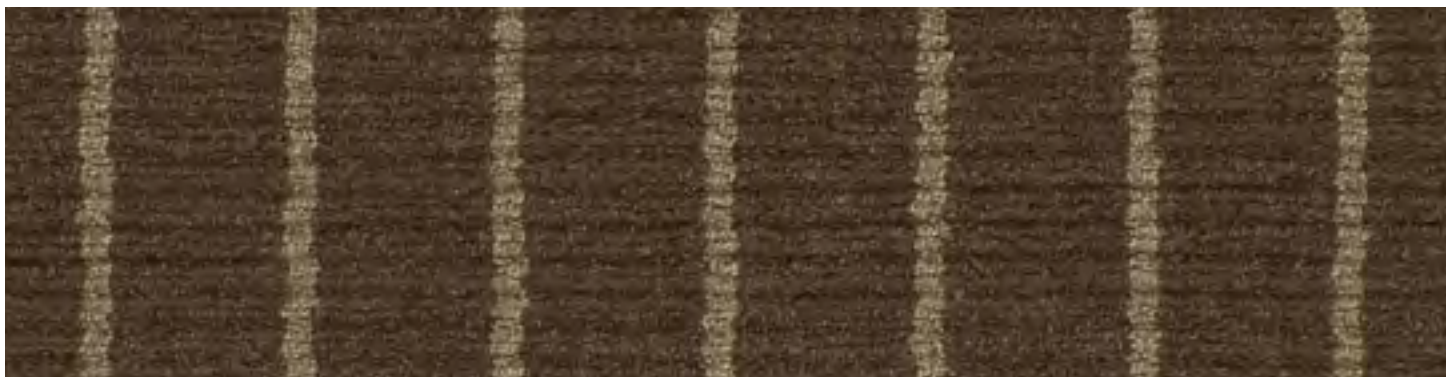
**WIDTH**

*13'2" (4 Meters)*



**2580/0003**

Beige/Taupe



**2580/0005**

Chocolate/Taupe



# BUCKEYE

---

**BRAND**

*Purity®*

**PILE**

*100% Undyed Natural Wool*

**CONSTRUCTION**

*Tufted Loop Pile*

**PATTERN REPEAT**

*4.75" W x .18" L (Straight Match)*

**WIDTH**

*13'2" (4 Meters)*



**PT19/0001**

Charcoal



**PT19/0004**

Camel



# CATALPA

---

**BRAND**

*Purity®*

**PILE**

*100% Undyed Natural Wool*

**WEAVE**

*Hand-Loomed Loop Pile*

**PATTERN REPEAT**

*Random Repeat in Both Width & Length*

**WIDTH**

*15'*



**PT07/0001**

Wheat Barley

# COTTONWOOD

---

**BRAND**

*Purity®*

**PILE**

*100% Undyed Natural Wool*

**WEAVE**

*Hand-Loomed Cut and Loop Pile*

**PATTERN REPEAT**

*2" W x .87" L (Straight Match)*

**WIDTH**

*13'2" (4 Meters)*



**PT80/0002**

Oatmeal



**PT80/0004**

Taupe



# HEMLOCK

---

**BRAND**

*Purity®*

**PILE**

*100% Undyed Natural Wool*

**WEAVE**

*Axminster Cut-Pile*

**PATTERN REPEAT**

*6.75" W x 5" L (Straight Match)*

**WIDTH**

*13'2" (4 Meters)*



**PT10/0001**

Oatmeal



**PT10/0002**

Birch



**PT10/0003**

Oyster



**PT10/0004**

Chinchilla

# HICKORY

---

**BRAND**

*Purity®*

**PILE**

*100% Undyed Natural Wool*

**CONSTRUCTION**

*Tufted Loop Pile*

**PATTERN REPEAT**

*No Repeat*

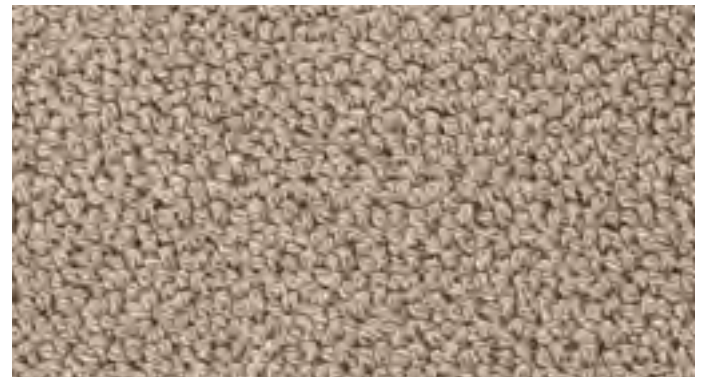
**WIDTH**

*13'2" (4 Meters)*



**PT14/0003**

Chrome



**PT14/0004**

Biscotti



**PT14/0005**

Steel Grey



# JUNIPER

---

**BRAND**

*Purity®*

**PILE**

*100% Undyed Natural Wool*

**WEAVE**

*Hand-Loomed Cut and Loop Pile*

**PATTERN REPEAT**

*.85" Length*

**WIDTH**

*15' \* PT15/0003 Only Available in 13'2" Width*



**PT15/0002**

Steel Grey



**PT15/0003 \***

Beige



**PT15/0004**

Taupe



**PT15/0005**

Oatmeal

# LAUREL

---

**BRAND**

*Purity®*

**PILE**

*100% Undyed Natural Wool*

**WEAVE**

*Hand-Loomed Loop Pile*

**PATTERN REPEAT**

*.62" W x .25" L (Straight Match)*

**WIDTH**

*15' \* PT13/0002 Only Available in 13'2" Width*



**PT13/0001**

Oatmeal



**PT13/0002 \***

Beige



# LINDEN

---

**BRAND**

*Purity®*

**PILE**

*100% Undyed Natural Wool*

**CONSTRUCTION**

*Tufted Loop Pile*

**PATTERN REPEAT**

*19.75" W x .43" L (Straight Match)*

**WIDTH**

*13'2" (4 Meters)*



**PT17/0004**

Khaki

# MAGNOLIA

---

**BRAND**

*Purity®*

**PILE**

*100% Undyed Natural Wool*

**CONSTRUCTION**

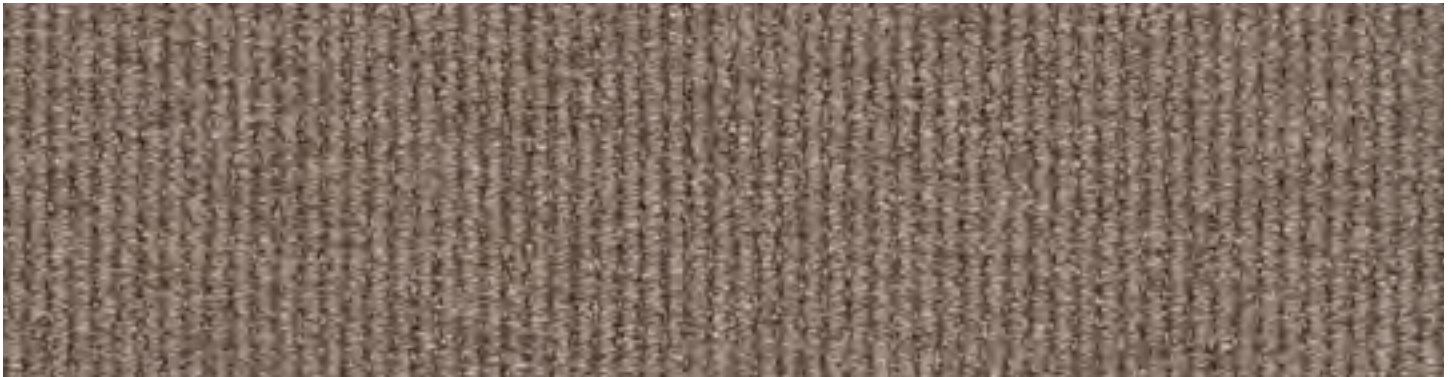
*Tufted Ribbed Loop Pile*

**PATTERN REPEAT**

*.25" W x .25" L (Straight Match)*

**WIDTH**

*13'2" (4 Meters)*



**PT01/0002**

Toffee



# MYRTLE

---

**BRAND**

*Purity®*

**PILE**

*100% Undyed Natural Wool*

**WEAVE**

*Axminster Cut-Pile*

**PATTERN REPEAT**

*39.62" W x 41" L (Straight Match)*

**WIDTH**

*13'2" (4 Meters)*



**PT11/0001**

Cloud



**PT11/0002**

Turtledove



**PT11/0004**

Sable

# OAKLEY

---

**BRAND**

*Purity®*

**PILE**

*100% Undyed Natural Wool*

**WEAVE**

*Hand-Loomed Flatweave*

**PATTERN REPEAT**

*2.25" W x 2.25" L (Straight Match)*

**WIDTH**

*15'*



**PT30/0001**

Barley



**PT30/0002**

Grey



**PT30/0003**

Smoke



# SHERMAN

---

## BRAND

Purity®

## PILE

75% Natural Wool / 25% Viscose

## WEAVE

Hand-Loomed Loop Pile

## PATTERN REPEAT

Random Repeat in Width and .81" in Length

## WIDTH

PT25/0003 – 13'2"

PT25/0004 – 13'2"

PT25/0006 – 15'



### **PT25/0003**

Khaki



### **PT25/0004**

Peanut



### **PT25/0006**

Bronze

# SPRUCE

---

**BRAND**

*Purity®*

**PILE**

*100% Undyed Natural Wool*

**CONSTRUCTION**

*Tufted Loop Pile*

**PATTERN REPEAT**

*No Repeat*

**WIDTH**

*13'2" (4 Meters)*



**PT20/0001**

Pearl



**PT20/0002**

Winter White



**PT20/0003**

Fog



**PT20/0004**

Flint Grey



**PT20/0005**

Pebble



# SYCAMORE

---

**BRAND**

*Purity®*

**PILE**

*100% Undyed Natural Wool*

**CONSTRUCTION**

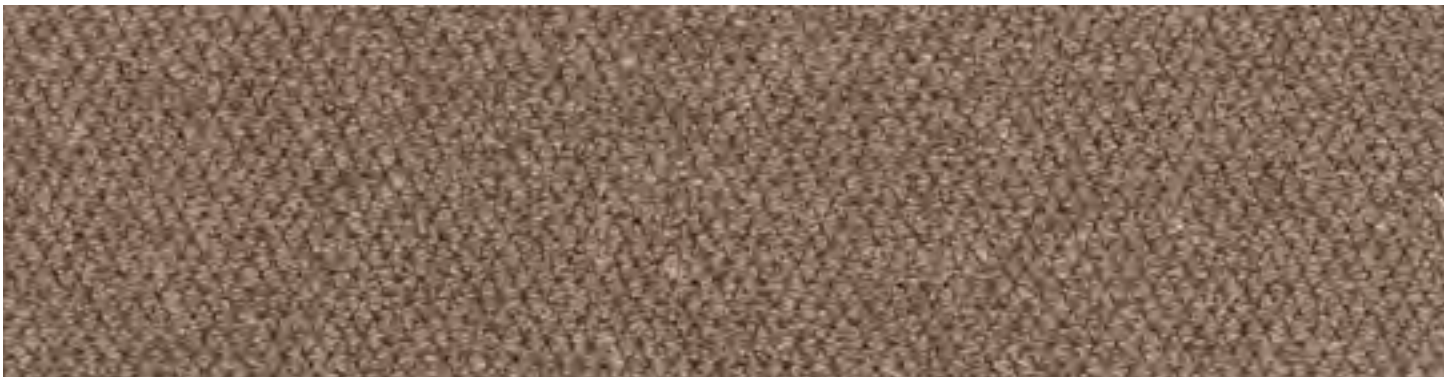
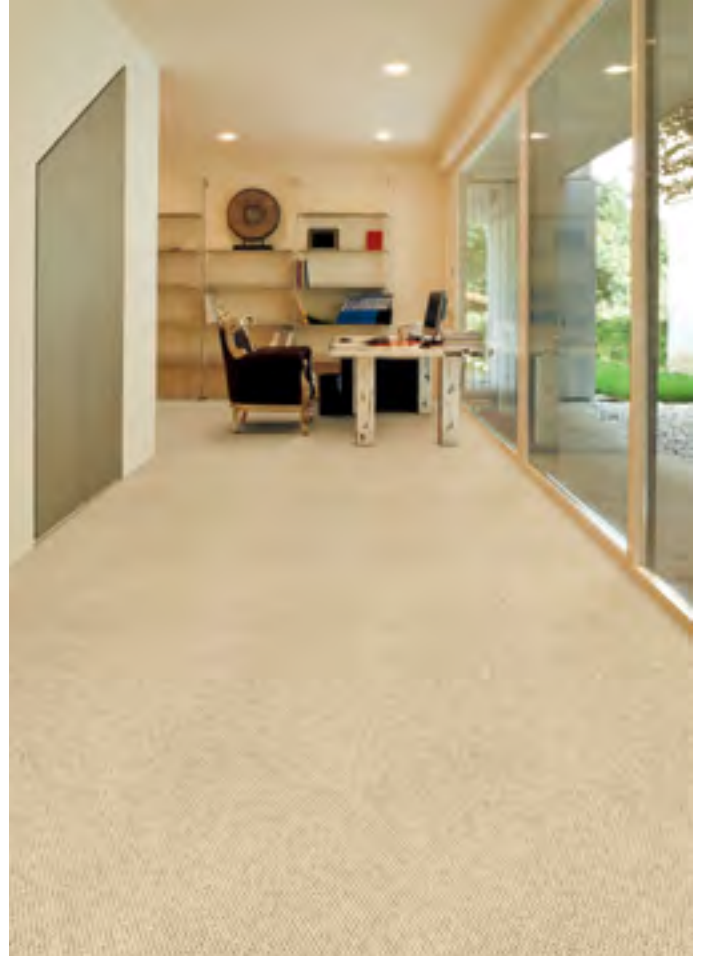
*Tufted Multi-Level Loop Pile*

**PATTERN REPEAT**

*No Repeat*

**WIDTH**

*13'2" (4 Meters)*



**PT02/0002**

Toffee

# WILLOW

---

## BRAND

*Purity®*

## PILE

*100% Undyed Natural Wool*

## CONSTRUCTION

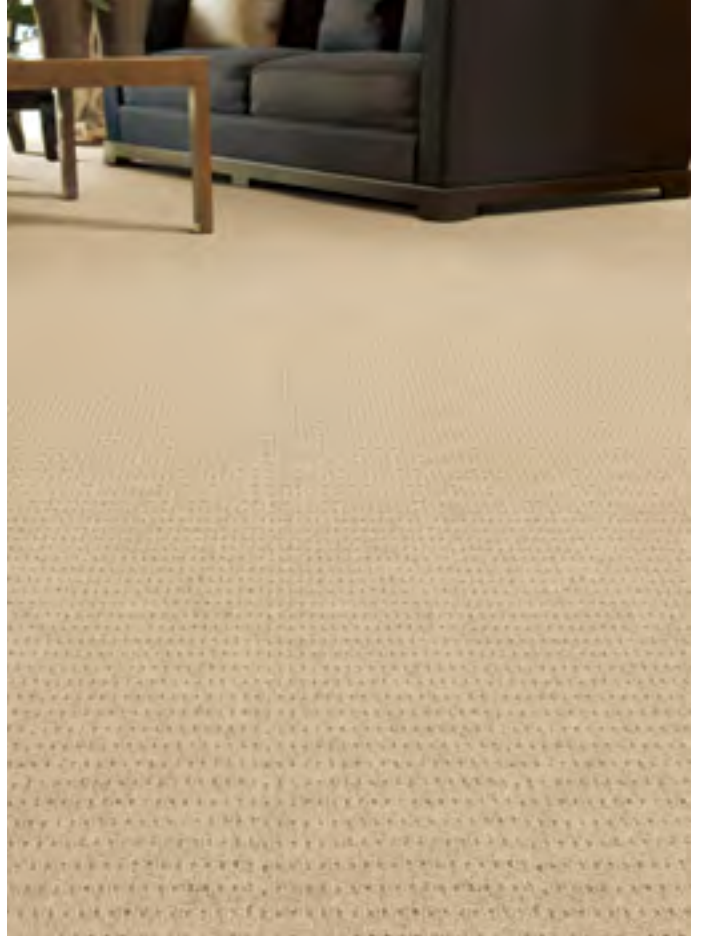
*Tufted Multi-Level Loop Pile*

## PATTERN REPEAT

*.75" W x .75" L (Straight Match)*

## WIDTH

*13'2" (4 Meters)*



## **PT03/0002**

Toffee



## **PT03/0003**

Biscotti







---

**BROADLOOM SPECIAL BUYS**

TWO EXECUTIVE DRIVE, FORT LEE, NEW JERSEY 07024 • 800.223.6186 • COURISTAN.COM

---

WALL-TO-WALL CARPET • AREA RUGS • ROLL RUNNERS • CUSTOM RUGS



3/25/20