

# *HANCOCK COUNTY SHERIFF'S OFFICE*



*A COMMUNITY ORIENTED  
POLICING AGENCY*

## *2013 ANNUAL REPORT*

200 West Crawford Street

Findlay, Ohio 45840

[www.hancocksheriff.org](http://www.hancocksheriff.org)

Table of Contents

Introductory Message.....4

Mission Statement & Guiding Principles.....5

Enforcement.....6-10

Transport Warrant .....11

Civil Process, Support Staff.....12

Corrections.....13-15

Special Units—Volunteer Organizations.....16-17

Organizational Structure.....18

2013 Employee Awards.....19-21

Financial Data.....22-23

Statistical Data..... Statistics Appendix



**A Message From:  
Michael E. Heldman  
Hancock County Sheriff**



Dear Citizens of Hancock County:

Thank you for supporting the Hancock County Sheriff's Office once again this past year. The ongoing support of our efforts in the community are what truly keeps us motivated to provide the best possible service to our fellow citizens.

The year 2013 presented the normal challenges and average numbers of incidents and accidents, as well as fairly steady jail statistics. While there were some ups and downs in statistics, there were no major changes in activity.

Even though the year was relatively uneventful overall, we must always keep in mind that our community is in constant need of law enforcement to monitor routine issues and watch trends in our area, state, nation and the world to help protect our community from the continual assault by criminals. Internet crimes, financial crimes and the constant flow of non-residents through our area are of constant concern for us. We are committed to continually serve our community to the best of our abilities.

Thank you for your continued support and we look forward to serving you in 2014.

Sincerely,

A handwritten signature in cursive script that reads "Michael E. Heldman".

Michael E. Heldman, Sheriff



## Mission Statement

*The mission of the Hancock County Sheriff's Office is to provide professional services which ensure the safety and security of our citizens, maintain human rights, protect property, and preserve life, by adhering to a philosophy that allows law enforcement and community residents to work together to prevent and solve crime.*

## Our Guiding Principles

- We are committed to maintaining human rights, the protection of property and the preservation of life.*
- We are committed to professionalism and excellence.*
- We will ensure the safety and security of our citizens.*



## Enforcement

The Hancock County Road Patrol is responsible for patrolling the roads for traffic control, handling accidents, and responding to any calls for service received by the dispatch center. They are the main point of contact for the Sheriff's Office with the public.

The Sheriff's Office made 91 arrests in 2013, towed 117 vehicles and answered 234 alarm calls. They drove a total of 624,803 miles, using 41,649 gallons of gasoline. Total fuel costs were \$128,993, averaging \$3.10 per gallon, down from \$3.25 per gallon in 2012.

Deputies wrote up 3,466 incident reports, handled 878 accidents, and issued citations with a total of 2,259 violations.

Communications is a vital part of the Road Patrol. Dispatchers received 65,038 calls during 2013. These calls involve complaints, accidents, weather questions, and many other general inquiries. Dispatchers must filter these calls to determine if action is needed, then convey the information to the proper personnel within the office to be followed up on.



**Hancock County Sheriff's Office**  
**2013 Statistics**  
**Incidents & Citations by Area**

<u>Townships &amp; Villages</u>	<u>Incidents</u>	<u>Citations</u>
<b>Allen</b>	257	113
Mortimer	2	0
Van Buren	27	52
<b>Amanda</b>	59	40
Vanlue	29	5
<b>Biglick</b>	81	92
West Independence	0	0
<b>Blanchard</b>	59	107
Benton Ridge	36	7
<b>Cass</b>	91	88
<b>Delaware</b>	128	57
Mt. Blanchard	68	2
<b>Eagle</b>	113	193
<b>Findlay</b>	258	267
<b>Jackson</b>	102	208
Houcktown	2	0
<b>Liberty</b>	780	282
<b>Madison</b>	78	52
Arlington	127	64
Williamstown	4	0
<b>Marion</b>	272	175
<b>Orange</b>	89	99
<b>Pleasant</b>	69	52
McComb	56	3
Shawtown	0	0
<b>Portage</b>	46	37
<b>Union</b>	100	46
Mt. Cory	22	3
Rawson	64	2
<b>Van Buren</b>	44	30
Jenera	54	5
New Stark	0	0
<b>Washington</b>	128	139
Arcadia	83	17
<b>Other</b>	138	22
<b>Totals</b>	<b>3466</b>	<b>2259</b>

# Enforcement

## Sheriff's Office Contract Activity

The Sheriff's Office contracts for patrol services with the Hancock County Park District, the Village of Arlington, the Village of Van Buren, and new in 2013, the Village of Jenera. Contracts allow the entity to receive dedicated patrol hours, for which they pay an hourly fee. Below is a summary of activity for these contracts for 2013:

Park District	2,232 hours patrol 10 incidents were recorded and 8 citations issued 1 crash occurred
Arlington	894 hours patrol 34 incidents were recorded, 6 crashes occurred and 26 citations issued 17 papers were served Walkthroughs conducted—17 school, 12 bank and 171 business
Van Buren	178 hours patrol 6 incidents were recorded, 0 crashes occurred and 32 citations issued 1 paper was served, 1 residence check was performed Walkthroughs conducted—29 school, 20 business Attended 1 meeting
Jenera (4 months)	27.25 hours patrol 2 incidents were recorded, 0 crashes occurred, and 3 citations issued 2 papers were served and 1 business walkthrough was conducted



**K-9 Units**  
**K9 Becky and handler**  
**Detective Fred Smith**

**K9 Kevin and handler**  
**Deputy Tom Miller**



Both canines remained active in the community and trained weekly with surrounding agencies. The K-9 Unit is an integral part of the service provided by the Sheriff's Office.

# Enforcement

## Detective Unit

The Detective unit consists of a sergeant and four detectives, two of which are assigned to the METRICH Task Force. The unit is also responsible for juvenile assault and abuse cases as well as all cases which require more in depth investigation than is provided by the road patrol.



★ Sheriff's Line - Do not cross ★ Sheriff's Line - Do not cross ★

### METRICH Drug Task Force

The HCSO Detective Unit is part of a ten county drug task force called METRICH. METRICH is one of the few de-centralized task forces in the State of Ohio promoting a Community Policing philosophy approach to task force operations. METRICH is also the largest drug task force in Ohio. The Sheriff's Office and the Findlay Police Department joined METRICH in October of 1999. METRICH is funded through the Office of Criminal Justice Services under Chief Phil Messer of the Mansfield Police Department.

#### 2013 Highlights:

The Detective unit was assigned 178 cases in 2013 and cleared 191, while making 80 arrests. All arrests were by summons. Of the 178 assigned criminal investigations, 44 were for child abuse or sexual offenses involving a minor. During the year the Detective Division conducted two underage compliance operations to determine if area businesses were furnishing alcohol to minors. These investigations led to criminal charges against six individuals. The Detective Division also took part in two prostitution stings with the Hancock-METRICH Unit and the Wood County Sheriff's Office. These investigations led to criminal charges of prostitution or solicitation against 11 individuals. The majority of other investigations revolved around property crimes and assaults.

Testing for marijuana



Confiscated drug items



Measuring tire print





# Enforcement

## Two cases that made headlines:

### Explosive device, drugs discovered during search

Drugs and a homemade explosive device were found in a Union Township house that was searched by Hancock County METRICH Drug Task Force detectives on Saturday, according to the task force.

A narcotics search warrant was obtained through Findlay Municipal Court for a residence at 14605 Union Township 53, near Mount Cory, the task force said. The residence was searched just before 1 a.m. Saturday by METRICH detectives, with assistance from sheriff's offices in Hancock and Wood counties.

Detectives seized large amounts of marijuana, suspected LSD, money, drug paraphernalia, and chemicals to manufacture drugs.

While conducting the search, an explosive device was found, the task force said. The Allen County Regional Bomb Squad destroyed the device.

An investigation is ongoing and no arrests were made, the task force said. Criminal charges are expected after laboratory testing of the seized evidence, the task force said.

Originally published in The Courier on October 22, 2013.

### Sheriff: Victim recovering in Hancock Co. biker shooting

Posted: Sept 24, 2013 2:40 PM EDT

Updated: Sep 24, 2013 4:07 PM EDT

13abc.com Christine Long—email

We have new details in the biker shooting in Hancock County that sent one man to the hospital.

It happened Saturday night on the 15000 block of Township Road 215 just outside of Findlay near Arcadia.

The victim had surgery and is expected to survive. He was shot once in the lower back.

Detective Sergeant Jason Seem says the attackers knew him by his street name "Scorpion". However, Seem is not releasing the victim's full name because of concerns for the victim's safety and the safety of his family.

Hancock County Sheriff Michael Heldman says it appears this shooting stems from an issue between two rival motorcycle clubs.

Video obtained by 13 ABC shows a group of motorcycle riders pulling up Saturday just after 9 p.m. blocking Township Road 215 in Cass Township to traffic.

There were more than 30 motorcycles, followed by a dozen cars.

The suspects got out and fired 21 shots onto the property that is the location of a motorcycle club.

The video shows the suspects were in and out within four minutes.

The mailbox is lettered B.F.F.B.

Sheriff Michael Heldman says the property at 15270 TR 215 is home to a group known as the Barbarians.

Heldman believes the group was targeted by a rival motorcycle club. He's not sure yet where they're from.

Some neighbors say the motorcycle club on TR 215 is peaceful.

"There has never been a problem. This is the first time there has ever been a problem," says a nearby resident.

Others who were scared to talk on camera say they've complained about the Barbarians' activities in the quiet, rural, residential area for years, but law enforcement hasn't done anything.

Heldman tells 13 ABC his office has been following the group for three years. He says, "Nothing has come up that we had anything specific to file charges against them."

There are no arrests in this case. It remains under investigation.

Anyone with information about this shooting is encouraged to call the Hancock County Sheriff's Office at 419-424-7097.

## Transport Warrant

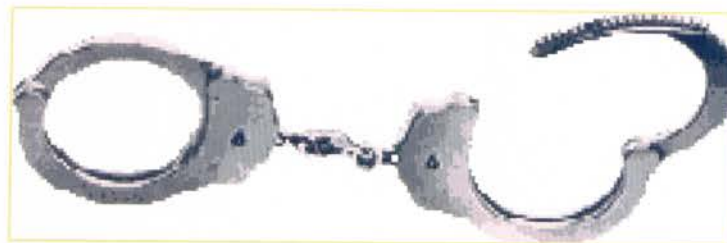
The Transport/Warrant unit is responsible for transporting prisoners to and from court, other facilities, and medical appointments. T/W also provides courthouse security for all county courts. Warrant tracking is also a function of this office, as is Sex Offender Registration, Concealed Carry Weapon licensing and civilian and juvenile fingerprinting.

Transport/Warrant had 770 adult escorts for court, transported 273 adults to other institutions and took 157 trips transporting 190 juveniles to other facilities in 2013, travelling 30,276 miles over 870 hours. T/W personnel spent 2,588 hours providing court security, including Common Pleas, Juvenile, Findlay Municipal Court, and the in-house courtroom for arraignments. This total also includes 2,167 hours at the West Entrance of the Courthouse. A total of 81,083 people went through security at the Courthouse in 2013.

There were 295 Sex Offender registrations, of which 13 were juvenile offenders, registered with this office in 2013. The unit spent 178 hours registering these offenders.

The Sheriff's Office issued 1,143 CCW (Concealed Carry Weapon) permits (up from 555 in 2012) spending 770 hours, and performed fingerprints on 181 civilians, and 23 juveniles that were sent from Juvenile Court.

There were 980 warrants entered into the system in 2013. The unit archived 922 open warrants, closing out the files.



*Also of note:  
The Records Clerk processed 4,847 reports,  
fulfilled 689 public records requests,  
and performed 412 local background checks for the public.*

# Civil Process and Support Staff

## Civil Process

Civil Process is the processing of all paperwork related to civil and criminal court papers, including Sheriff's Sales, as received from the court system.

The office received 2,094 civil papers to process, and 1,826 papers were served by the Road Patrol. There were 137 CPO's (Civil Protection Orders) issued by the court and served through the Sheriff's Office

In 2013, the office received 315 Orders of Sale of real property. There were 245 appraisals performed and 193 made it through to sale without being withdrawn. There was 1 Order of Execution (sale of property, i.e.: automobiles, boats, house trailers, etc.) that was taken to sale in 2013.



## Support Staff

The Support Staff is comprised of 7 employees. The Corrections Clerks are responsible for all paperwork produced in the jail. They process all commissary payments and accounts, maintain and store all inmate records, maintain policy and procedure manuals and assist the Corrections staff.

On the Enforcement level, the Support Staff is responsible for answering non-emergency phones, maintaining all records related to enforcement, expungements, records retention, processing all civil papers in and out of the office, Sheriff's Sales processing, payroll, human resource functions, maintaining fixed asset records, receipt of monies, invoicing of services, accounts payable, budgeting, and financial analysis.

The Support Staff also organizes the Annual Banquet, prepares the Annual Report, collects statistics, manages the Web page and Facebook page, and all other office functions.

# Corrections

**The Hancock County Justice Center is a 98 bed Adult, Male and Female, Full Service Jail.**

*A Full Service Jail is primarily used to detain adults for more than 120 hours, or 5 days.*



## 2013 Quick Facts

In 2013, the jail booked 2,148 inmates and released 2,146.

- The highest daily population was 108 and the lowest daily population was 91.
- The Average Daily Population for 2013 was 92.
- There were 67 days when the population exceeded the maximum 98 beds.

The jail housed 1,615 males and 533 females. Of the inmates:

- 647 were incarcerated on felony charges
- 1,462 were misdemeanors

The jail served 99,194 meals to prisoners in 2013 for a total cost of \$174,999.

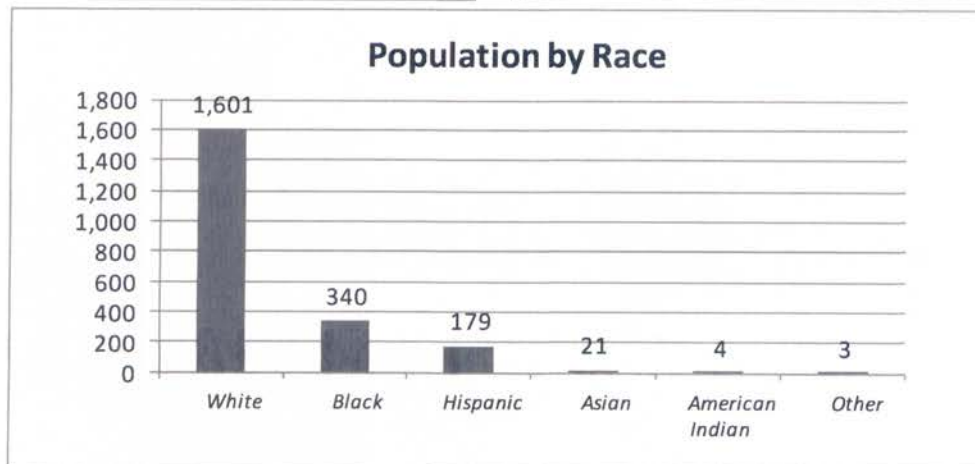
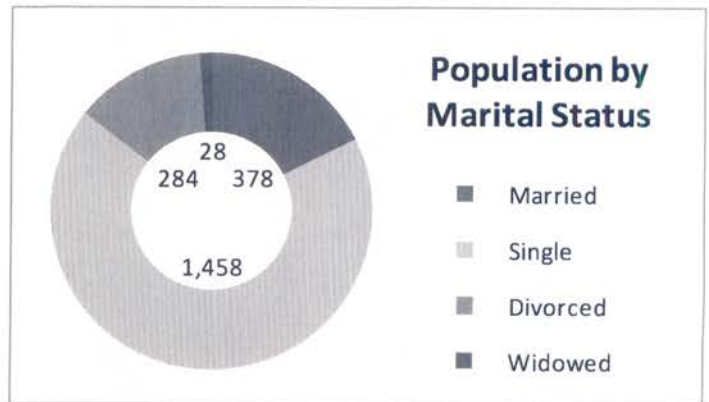
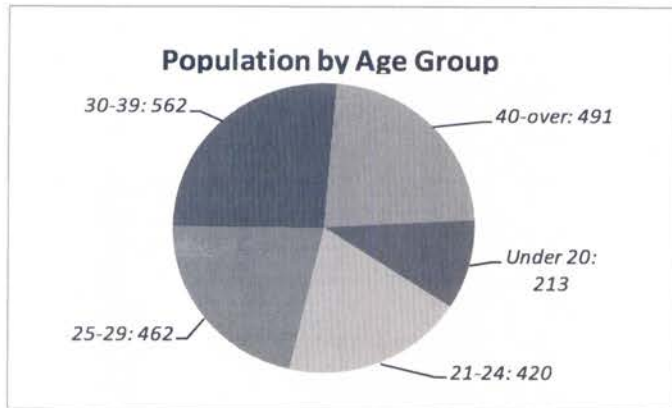
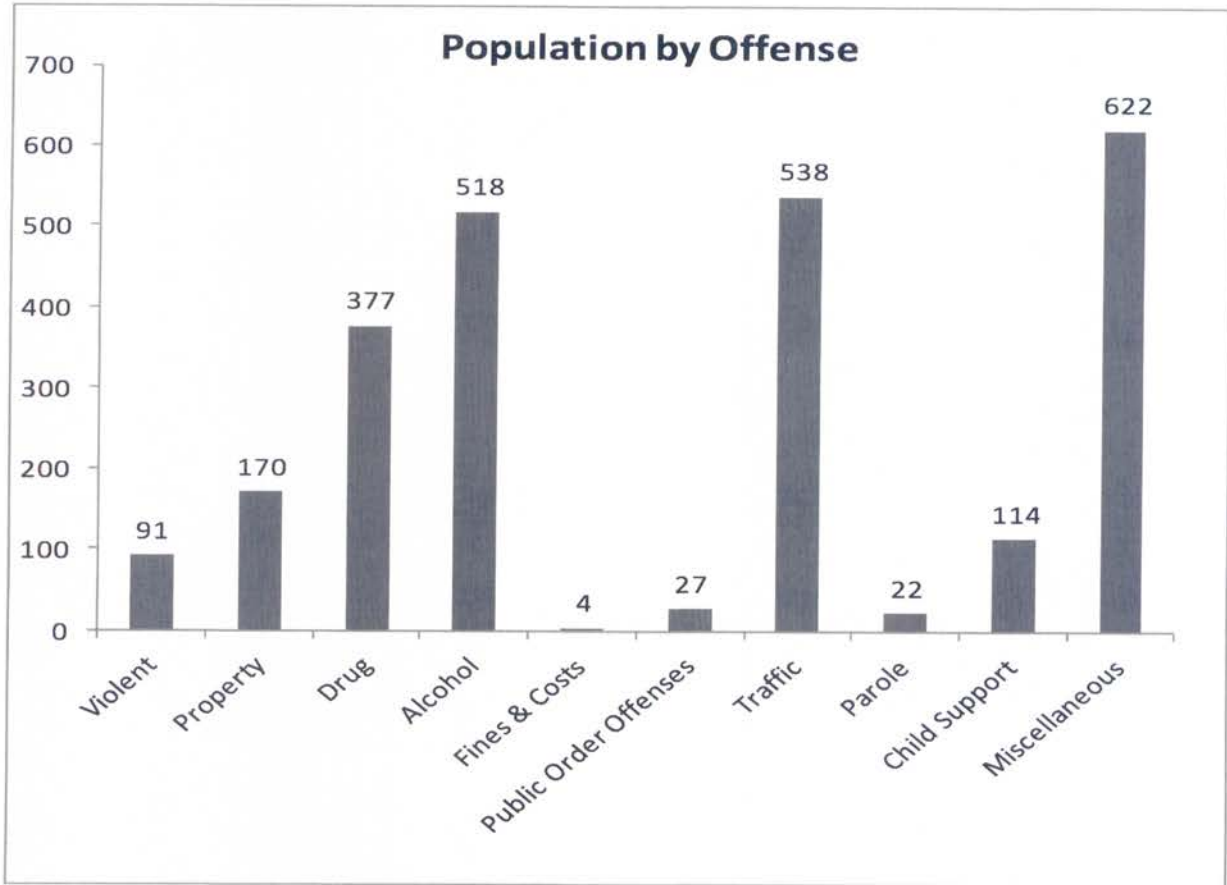
Predominate Race Incarcerated at the HCJC = Caucasian

Predominate Marital Status Incarcerated at the HCJC = Single

Top Five Incarcerating Offenses:

1. Miscellaneous (Includes forgery, petty theft, passing bad checks, misdemeanor assault, etc.—those crimes that do not fit by definition into any other collecting categories)
2. Traffic Offenses
3. Alcohol Related Offenses
4. Drug Offenses
5. Property Offenses

# Corrections



# Corrections

## Programs

Mental Health on site counseling for inmates	1,756
Mental Health off site counseling for inmates	4
AA Male/Female	665
GED	148
Dad's Coaching Clinic	126
Art Program	107
Domestic Violence Program	321
Bible Study Male/Female	668
Church Services, Non Denominational	534
Catholic Bible Visit—Female	18
Inmate Worker Program Male/Female	459
Inmate Worker Outside Details	26
Inmate Worker Car Wash/Wax Deputy Cruisers	504

## Medical

Inmates who requested Medical Intervention	1,094
Inmates who requested Mental Health Intervention	832
Inmates seen by the facility doctor	865
Inmates seen by facility nursing staff	919

There are many more statistics tracked by the Corrections Staff.  
For full statistics, see Statistics Appendix

# Special Units—Volunteer Organizations

## Explorer Post:

The Law Enforcement Explorer Post has been active for close to 30 years at the Sheriff's Office. Current advisors are Mike McGuire and Tim Myers. Combine they have over 30 years of experience as advisors. The post meets twice a month and currently has 12 active members. The Explorers assist with many events including the Balloon Fest, both craft shows held at the fairgrounds and the Hancock County Fair.

Training is held at each meeting and members can ride along with deputies if they choose. This program allows teens to explore the profession and decide if this is a career path they would like to choose.

## Special Deputy Organization

The Special Deputy Organization is comprised of 41 citizens who are trained to assist law enforcement agencies. This organization is responsible for security at the county schools' football and basketball games and the Hancock County Fair.



These individuals log several thousand volunteer hours, including the hours at the Hancock County Fair. They also provide services for a variety of other special events around the county each year, including the Spring and Fall Craft Shows held at the fairgrounds. Other details included the Flag City Multi-sport Event, various parades and traffic details, school dances and other functions as requested.

## Posse

The Posse is a unit of the Special Deputy Organization and is utilized in parades and at the fair. The unit is also available for special duties which might arise where crowd control is an issue. The group also provided security presence in the Findlay Village Mall parking lot during the holiday shopping season.

Each certified posse member has had to undergo rigorous training with their horse and pass tests to determine that they and their mount are qualified to handle themselves in stressful situations. These volunteers provide their own gear and mount, and participate in all training on their own time and money.

There are currently 22 Posse members in the unit.



# Special Units—Volunteer Organizations

## Underwater Search & Recovery Team

This unit is specially trained in underwater search and recovery, and has been utilized many times to search the reservoir, the Blanchard River, and area ponds and streams when the need arises. There are approximately 19 members on the team, including divers, boat crew, boat captain and the land crew.

The unit undergoes regular training sessions throughout the year to strengthen their skills and teamwork.



## Bike Patrol

The Bike Patrol provides services in areas where cruisers cannot be utilized. They are also utilized for special events such as parades, 5k runs, and the Balloon Fest.

This unit must go through training to learn how to handle their bicycles in all kinds of terrain and situations. They are certified at the end of their training.

There where a lot of miles covered working the Hancock County Fair, Balloon Fest 5K Run, Special Olympics Torch Run and many other activities. The Patrol has a total of 8 bikes and 12 riders.





# Hancock County Sheriff's Office

## Organizational Structure



Sheriff Michael E. Heldman  
 Captain Roger Treece  
 Jail Administrator Lt. Ryan Kidwell



**SHERIFF**

Fiscal Officer (1)	Captain (1)
--------------------	-------------

HR Specialist (1)	Lieutenant/Enforcement (1)	Director of Transport/ Writ Process (1)	Lt/Jail Administrator (1)
			Lt/Jail Operations (1)

Road Sergeants (4)	Detective Sgt (1)	Corrections Sgts (5)
--------------------	-------------------	----------------------

Clerks (3)	Road Deputies (16)	Detectives (2)	Transport Deputies (5)	Clerks (2)	Corrections Officers (32)
------------	--------------------	----------------	------------------------	------------	---------------------------

Communications Officers (7)	Detectives Drug Unit (2)
-----------------------------	--------------------------

Total 87 employees, including Sheriff



# 2013 Employee Awards



## Peer Nominated Awards

### Deputy Sheriff of the Year

**Matt Brunswick**

### Corrections Officer of the Year

**Lori Rizor**

### 110% Award

**Jesse Sterrett**

**Bill Laveglia**

### Above & Beyond Award

**Melissa Brim**

**Steve Lowery**

### Officers of the Month

**TJ Brooks**

**Matt Brunswick**

**Kathy Chamberlain**

**Deb Love**

**Josh Peters**

**Mark E. Price**

**Lynne Rice**

**Brian Stozich**

**Brian Williams**



Hancock County  
Sheriff's Office  
Honor Guard





# 2013 Employee Awards



## Years of Service:

25 years Nancy Corder  
 Matt Kinsinger  
 Doug McCartney

20 years Kathy Abbott

15 years Shane Leeth  
 Tammy Montgomery  
 Mark A Price

10 years Dan Barnt  
 Lynne Rice

5 years Melissa Brim  
 Matt Brunswick  
 Amanda Dean  
 Corey Hartman

## No Sick Leave Used

Brent Bell  
 Tami House  
 Mike McGuire  
 Josh Peters  
 Mark A Price  
 Fred Smith  
 Jesse Sterrett  
 Ben Stoner  
 Barry Turner  
 Marty Wolfe

## Driving Awards

5 years Shane Leeth

10 years Jason Seem

15 years Mike Cortez  
 Matt Kinsinger

20 years Mike McGuire

25 years Brian Williams





# 2013 Employee Awards



## Buckeye State Sheriff's Association Awards

The BSSA awards are awarded based on the following criteria:

- Lifesaving Award: Awarded to all officers directly responsible for the saving of a human life.
- Certificate of Merit: Outstanding performance of duty under unusual or difficult conditions. The action need not involve exposure to physical danger but must involve the protection of life or property and involve unusual thoroughness, conscientiousness, determination and initiative.
- Commendation Award: For individual(s) who have performed efficient and valuable service to the office, either carrying out a specific task or in the performance of general duties.

### BSSA Lifesaving Award:

**Kathy Chamberlain      Ryan Hackworth      Brian Stozich      Barry Tuner**

### BSSA Certificate of Merit:

**Dan Barnt  
Kevin Keefe  
Mark E Price  
Colleen Wedge**

**Kathy Chamberlain  
Tammy Montgomery  
Jim Saltzman  
Kathy Wefler**

**Joe Hartman  
Tim Myers  
John Shepard**

### BSSA Commendation Award:

**Jason Bowling  
Lyle Harvitt  
Deb Love  
Mark A Price**

**Shay Ellcessor  
Ryan Kidwell  
Tim Myers  
Jason Seem  
Ben Stoner**

**Ryan Hackworth  
Matt Kinsinger  
Kris Otto  
Jesse Sterrett**

**Deputy Tom Miller & K-9 Kevin**

**Deputy Fred Smith & K-9 Becky**

### BSSA Certificate of Appreciation:

**April Brown      Nancy Corder      Marty Wolfe**

*Congratulations to all award winners. Your dedication to the Sheriff's Office is very much appreciated. Without our employees, we could not "get the job done".*

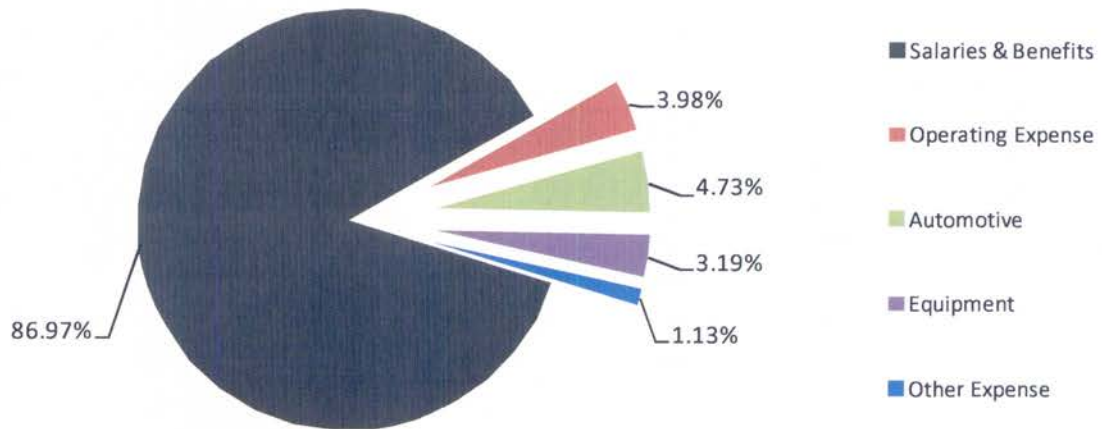
# Financial Data

<b>FUNDS RECEIVED</b>	<b>2011</b>	<b>2012</b>	<b>2013</b>
Total Deposited into General Fund	\$770,822.66	\$803,902.82	\$778,553.39
<b>OTHER FUNDS:</b>			
Total Received - Contract Services	\$103,178.03	\$100,529.50	\$115,933.09
Drug Fines	\$3,630.75	\$3,558.50	\$3,602.25
DUI Fines	\$2,704.50	\$2,456.50	\$1,897.00
Funds Received - METRICH Task Force	\$39,946.52	\$33,592.14	\$21,456.34
Concealed Carry Weapon License Fees	\$21,518.00	\$40,570.00	\$79,962.00
Total Commissary Funds Received	\$86,901.34	\$83,349.11	\$87,760.97
Grant Funds Received	<u>\$117,185.62</u>	<u>\$28,128.92</u>	<u>\$69,923.88</u>
<b>TOTAL FUNDS RECEIVED</b>	<b>\$1,145,887.42</b>	<b>\$1,096,087.49</b>	<b>\$1,159,088.92</b>

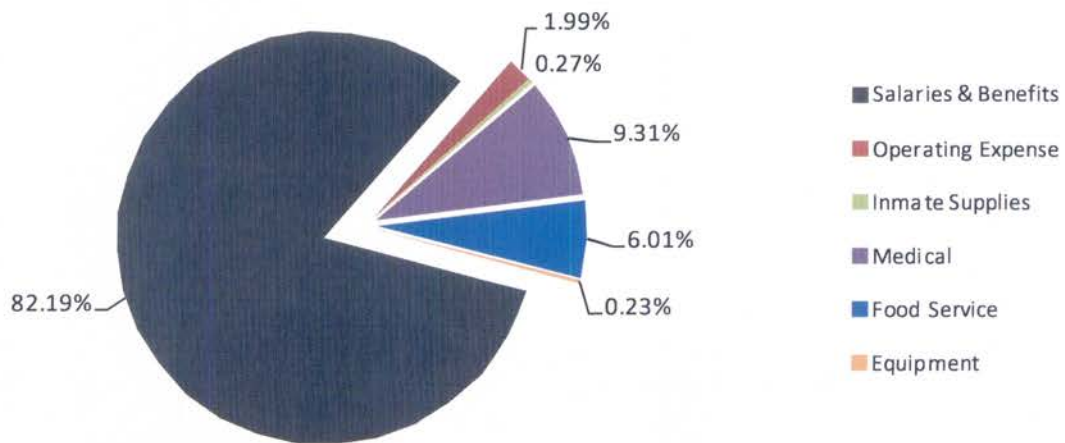
<b>EXPENDITURES</b>	<b>2011</b>	<b>2012</b>	<b>2013</b>
<b>Enforcement</b>			
Salaries & Benefits	\$ 2,661,059	\$ 3,107,582	\$ 3,223,770
Operating Expense	\$ 127,317	\$ 144,613	\$ 147,506
Automotive	\$ 135,524	\$ 146,704	\$ 175,407
Equipment	\$ 46,330	\$ 34,673	\$ 118,125
Other Expense	\$ 56,754	\$ 40,993	\$ 41,954
Total Enforcement	\$ 3,026,984	\$ 3,474,565	\$ 3,706,762
<b>Corrections</b>			
Salaries & Benefits	\$ 2,164,855	\$ 2,218,527	\$ 2,392,066
Operating Expense	\$ 31,565	\$ 44,024	\$ 57,861
Inmate Supplies	\$ 7,820	\$ 6,082	\$ 7,986
Medical	\$ 185,887	\$ 230,157	\$ 271,106
Food Service	\$ 146,368	\$ 151,333	\$ 174,999
Equipment	\$ 11,370	\$ 2,418	\$ 6,560
Total Corrections	\$ 2,547,865	\$ 2,652,540	\$ 2,910,577
<b>Total General Fund</b>	<b>\$ 5,574,849</b>	<b>\$ 6,127,105</b>	<b>\$ 6,617,339</b>

# Financial Data

## 2013 Enforcement Expenses by Category



## 2013 Corrections Expenses by Category



**Hancock County Sheriff's Office**  
**2013 Statistics**  
**Patrol -General Statistics**

Category	Jan	Feb	Mar	Apr	May	Jun	Jul	Aug	Sep	Oct	Nov	Dec	Total
<b>Total Calls for Service</b>	131	102	131	127	138	162	149	186	232	260	260	263	2141
<b>Arrests</b>													
Complaint	2	0	6	1	2	5	5	5	2	2	5	1	36
Crime in Progress	4	1	1	5	0	1	1	5	7	3	5	2	35
Warrant	0	0	0	0	0	0	0	0	0	0	0	0	0
Court Summons / Citation	0	2	0	1	5	1	2	3	1	1	0	0	16
Order of Protection	1	0	0	0	0	0	0	0	0	0	0	0	1
Other	0	0	0	0	0	0	1	1	1	0	0	0	3
<b>Total Arrests</b>	<b>7</b>	<b>3</b>	<b>7</b>	<b>7</b>	<b>7</b>	<b>7</b>	<b>9</b>	<b>14</b>	<b>11</b>	<b>6</b>	<b>10</b>	<b>3</b>	<b>91</b>
<b>Towed Vehicles</b>													
	1	12	9	12	12	9	11	10	7	11	10	13	117
<b>Alarm Calls</b>													
Business	5	4	1	8	10	4	9	4	3	6	6	1	61
Residential	7	9	14	4	10	15	16	9	12	6	8	9	119
Schools	0	1	3	1	6	0	1	2	0	4	2	0	20
Other County Offices	2	3	4	4	4	4	5	2	0	3	1	2	34
<b>Total Alarm Calls</b>	<b>14</b>	<b>17</b>	<b>22</b>	<b>17</b>	<b>30</b>	<b>23</b>	<b>31</b>	<b>17</b>	<b>15</b>	<b>19</b>	<b>17</b>	<b>12</b>	<b>234</b>

Alarm \$ Billed	\$ -	\$ -	\$ -	\$ 50.00	\$ -	\$ -	\$ -	\$ -	\$ -	\$ -	\$ 150.00	\$ 200.00	\$ 400.00
Alarm \$ Received	\$ 150.00	\$ -	\$ -	\$ 50.00	\$ -	\$ -	\$ -	\$ -	\$ -	\$ -	\$ -	\$ -	\$ 200.00

<b>Patrol Car Stats</b>													
Miles Driven	48,638	47,187	59,256	54,820	56,711	49,095	54,790	54,448	50,380	59,344	44,490	45,644	624,803
Gallons of Gas	3,281.8	3,304.9	3,808.7	3,540.6	3,662.0	3,181.8	3,627.7	3,632.0	3,256.4	4,097.7	3,069.3	3,186.4	41,649.2
MPG	14.82	14.28	15.56	15.48	15.49	15.43	15.10	14.99	15.47	14.48	14.50	14.32	15.00
Total \$ Purchased	\$ 9,584.70	\$ 10,748.14	\$ 12,704.08	\$ 11,494.85	\$ 11,870.94	\$ 10,668.09	\$ 10,993.64	\$ 11,205.26	\$ 10,044.72	\$ 12,128.24	\$ 8,580.35	\$ 8,970.37	\$ 128,993.38
Price per Gallon	\$ 2.921	\$ 3.252	\$ 3.336	\$ 3.247	\$ 3.242	\$ 3.353	\$ 3.030	\$ 3.085	\$ 3.085	\$ 2.960	\$ 2.796	\$ 2.815	\$ 3.097

**Hancock County Sheriff's Office**  
**2013 Statistics**  
**Criminal - General Statistics**

Category	Jan	Feb	Mar	Apr	May	Jun	Jul	Aug	Sep	Oct	Nov	Dec	Total
----------	-----	-----	-----	-----	-----	-----	-----	-----	-----	-----	-----	-----	-------

**Criminal Investigations**

Assigned Cases	17	13	19	11	21	17	14	15	10	14	16	11	178
Cleared Cases	17	18	18	12	16	27	9	16	8	22	9	19	191
# of Arrests	5	4	4	6	4	7	2	4	5	6	5	7	59

**Metrich - Hancock County**

# of Defendants	11	6	4	1	5	7	5	3	9	7	5	8	71
New Cases	2	13	6	9	7	6	9	10	14	6	9	4	95
Closed Cases	2	13	6	9	7	6	9	10	9	6	9	4	90



**Hancock County Sheriff's Office**  
**2013 Statistics**  
**Enforcement - Incident Reports**

**Township & Village**  
**Incident Reports**

	Jan	Feb	Mar	Apr	May	Jun	Jul	Aug	Sep	Oct	Nov	Dec	Total
Allen	15	12	22	26	31	28	29	12	19	23	18	22	257
Mortimer	0	0	0	0	0	0	0	0	0	1	0	1	2
Van Buren	2	4	1	0	5	4	1	0	1	4	4	1	27
Amanda	5	3	6	2	8	5	5	7	5	3	2	8	59
Vanlue	6	3	0	1	1	2	0	4	2	6	2	2	29
Biglick	8	4	9	7	7	9	6	7	10	3	5	6	81
West Independence	0	0	0	0	0	0	0	0	0	0	0	0	0
Blanchard	6	2	5	8	1	7	4	6	4	5	6	5	59
Benton Ridge	2	1	4	3	2	3	6	2	3	5	2	3	36
Cass	10	4	2	8	13	8	9	7	11	13	2	4	91
Delaware	9	6	18	11	8	11	3	9	15	18	11	9	128
Mt. Blanchard	5	2	4	6	3	6	6	8	11	8	5	4	68
Eagle	8	6	12	9	12	7	15	17	9	4	3	11	113
Findlay	23	21	16	15	18	18	21	27	34	22	21	22	258
Jackson	11	7	8	11	4	9	5	8	15	11	11	2	102
Houcktown	0	0	0	0	0	1	0	0	0	1	0	0	2
Liberty	59	49	56	57	74	75	74	68	66	82	59	61	780
Madison	5	5	7	10	8	9	7	6	8	9	2	2	78
Arlington	10	7	10	8	17	15	10	12	16	10	5	7	127
Williamstown	0	0	0	0	1	1	0	0	2	0	0	0	4
Marion	20	25	19	16	28	27	29	22	27	20	20	19	272
Orange	6	8	5	2	4	7	7	18	10	5	8	9	89
Pleasant	6	3	12	7	3	1	6	6	7	5	5	8	69
McComb	8	8	6	4	5	3	4	4	4	2	2	6	56
Shawtown	0	0	0	0	0	0	0	0	0	0	0	0	0
Portage	4	3	5	3	2	1	1	4	7	7	4	5	46
Union	5	10	5	8	5	11	12	9	11	8	6	10	100
Mt. Cory	0	2	1	2	4	1	4	3	1	1	2	1	22
Rawson	6	4	4	7	5	3	3	5	7	8	5	7	64
Van Buren	3	3	2	6	3	3	6	0	3	3	5	7	44
Jenera	0	1	8	0	5	6	5	5	6	5	8	5	54
New Stark	0	0	0	0	0	0	0	0	0	0	0	0	0
Washington	5	13	9	11	13	17	17	5	16	12	5	5	128
Arcadia	1	5	9	5	6	9	10	6	9	7	10	6	83
Other	6	4	8	15	6	8	6	14	14	24	16	17	138
<b>Totals</b>	<b>254</b>	<b>225</b>	<b>273</b>	<b>268</b>	<b>302</b>	<b>315</b>	<b>311</b>	<b>301</b>	<b>353</b>	<b>335</b>	<b>254</b>	<b>275</b>	<b>3466</b>

**Hancock County Sheriff's Office**  
**2013 Statistics**  
**Enforcement - Citations**

Citation Summary Township & Village	Jan	Feb	Mar	Apr	May	Jun	Jul	Aug	Sep	Oct	Nov	Dec	Total
Allen	6	7	11	7	10	14	13	11	13	9	5	7	113
Mortimer	0	0	0	0	0	0	0	0	0	0	0	0	0
Van Buren	5	5	3	4	4	5	4	2	5	9	3	3	52
Amanda	0	6	3	0	3	4	3	4	3	3	9	2	40
Vanlue	1	0	0	1	1	0	0	0	0	2	0	0	5
Biglick	5	12	9	8	17	5	7	10	8	3	7	1	92
West Independence	0	0	0	0	0	0	0	0	0	0	0	0	0
Blanchard	2	16	3	9	14	13	9	14	11	8	3	5	107
Benton Ridge	2	0	0	1	0	2	1	1	1	0	0	0	7
Cass	4	5	8	5	8	6	11	6	6	17	6	6	88
Delaware	2	3	13	2	4	1	5	9	5	4	3	6	57
Mt. Blanchard	0	1	0	0	0	1	0	0	0	0	0	0	2
Eagle	8	20	33	18	29	10	12	22	11	7	17	6	193
Findlay	13	20	22	19	36	15	25	20	17	27	41	12	267
Jackson	14	23	17	21	43	10	13	16	7	7	25	12	208
Houcktown	0	0	0	0	0	0	0	0	0	0	0	0	0
Liberty	13	26	21	24	47	25	22	23	25	24	13	19	282
Madison	5	5	5	5	7	2	3	6	6	2	4	2	52
Arlington	2	4	8	2	15	4	10	9	1	2	5	2	64
Williamstown	0	0	0	0	0	0	0	0	0	0	0	0	0
Marion	14	17	6	13	14	16	16	14	18	21	14	12	175
Orange	5	8	17	10	6	8	17	11	6	4	7	0	99
Pleasant	2	5	6	6	3	5	7	4	0	5	2	7	52
McComb	2	0	1	0	0	0	0	0	0	0	0	0	3
Shawtown	0	0	0	0	0	0	0	0	0	0	0	0	0
Portage	1	2	6	5	4	0	1	1	3	2	4	8	37
Union	3	6	3	2	2	3	7	5	2	6	5	2	46
Mt. Cory	0	0	1	0	0	1	1	0	0	0	0	0	3
Rawson	0	0	0	1	0	0	0	1	0	0	0	0	2
Van Buren	0	2	4	4	1	2	2	0	9	1	3	2	30
Jenera	0	0	0	0	0	0	2	0	3	0	0	0	5
New Stark	0	0	0	0	0	0	0	0	0	0	0	0	0
Washington	12	16	14	9	14	13	8	7	12	14	7	13	139
Arcadia	1	2	2	0	2	1	2	3	0	2	0	2	17
Other	2	2	1	0	3	2	1	0	5	0	2	6	22
<b>Total Citations</b>	<b>122</b>	<b>213</b>	<b>217</b>	<b>176</b>	<b>287</b>	<b>168</b>	<b>201</b>	<b>199</b>	<b>177</b>	<b>179</b>	<b>185</b>	<b>135</b>	<b>2259</b>

**Hancock County Sheriff's Office**  
**2013 Statistics**  
**Communications**

Category	Jan	Feb	Mar	Apr	May	Jun	Jul	Aug	Sep	Oct	Nov	Dec	Total
<b>Dispatch Calls</b>													
911 Calls Received	743	645	756	750	917	918	882	877	887	780	956	1009	10120
2424	3527	3276	3756	3739	4229	3819	4069	3925	3949	3202	3801	4061	45353
2425	449	437	406	507	496	477	605	589	554	439	555	575	6089
2426	222	250	275	317	276	310	321	328	283	278	313	303	3476
<b>Total Dispatch</b>	<b>4941</b>	<b>4608</b>	<b>5193</b>	<b>5313</b>	<b>5918</b>	<b>5524</b>	<b>5877</b>	<b>5719</b>	<b>5673</b>	<b>4699</b>	<b>5625</b>	<b>5948</b>	<b>65038</b>
<b>Administrative</b>													
7097 - Main line	2021	2065	2268	2177	2127	2007	2142	2022	1831	1500	1981	2097	24238
7098 - Rollover line	380	426	369	397	360	350	383	637	2141	336	338	362	6479
All Transport Warrant	1165	1200	1119	1230	1145	858	1208	1133	1131	849	846	930	12814
7239 - Civil Process	2291	1869	517	700	601	536	643	721	561	493	565	559	10056
7251 - Records	454	454	511	505	437	493	484	416	385	376	452	393	5360
<b>Total Administrative</b>	<b>6311</b>	<b>6014</b>	<b>4784</b>	<b>5009</b>	<b>4670</b>	<b>4244</b>	<b>4860</b>	<b>4929</b>	<b>6049</b>	<b>3554</b>	<b>4182</b>	<b>4341</b>	<b>58947</b>
<b>Corrections</b>													
7202 - Main Line	3379	3102	3018	3410	3285	2930	2829	2844	2731	2060	3030	2826	35444
7203 - Rollover Line	2770	2523	2708	2691	2782	2307	2289	2404	2433	1862	2607	2369	29745
7204 - Booking	1011	918	852	906	908	800	936	460	210	189	12387	5612	25189
<b>Total Corrections</b>	<b>7160</b>	<b>6543</b>	<b>6578</b>	<b>7007</b>	<b>6975</b>	<b>6037</b>	<b>6054</b>	<b>5708</b>	<b>5374</b>	<b>4111</b>	<b>18024</b>	<b>10807</b>	<b>90378</b>
<b>Total Calls for Agency</b>	<b>18412</b>	<b>17165</b>	<b>16555</b>	<b>17329</b>	<b>17563</b>	<b>15805</b>	<b>16791</b>	<b>16356</b>	<b>17096</b>	<b>12364</b>	<b>27831</b>	<b>21096</b>	<b>214363</b>

**Hancock County Sheriff's Office**  
**2013 Statistics**  
**Transport Warrant & Civil Unit**

Category	Jan	Feb	Mar	Apr	May	Jun	Jul	Aug	Sep	Oct	Nov	Dec	Total
<b>Transports</b>													
Adult Escorts	65	70	54	75	76	67	61	62	56	67	74	43	770
Adult Inst. Transports	12	19	29	22	19	16	15	10	27	27	10	14	220
Totl Adult Transports	17	22	34	27	24	23	20	16	32	31	11	16	273
Adult Transport Time	28.75	42.50	65.75	53.75	52.00	44.50	46.75	33.00	79.50	82.50	24.50	37.25	590.75
Mileage	1,171	1,378	2,772	2,105	2,264	1,892	1,726	931	2,831	2,978	962	1,302	22,312
Adult Transport Fees	\$ 1,605.00	\$ 3,958.00	\$ 4,907.00	\$ 4,253.98	\$ 3,897.00	\$ 3,967.00	\$ 3,287.00	\$ 1,733.00	\$ 5,235.00	\$ 4,447.11	\$ 1,374.00	\$ 1,853.00	\$ 40,517.09
Juvenile Transport Trips	21	13	11	7	16	14	9	19	12	5	17	13	157
# of Juveniles Transported	32	13	16	10	19	23	14	16	15	6	10	15.5	189.5
Juvenile Transport Time	36.50	16.50	14.75	13.50	22.50	20.75	15.75	27.75	60.00	7.50	24.75	18.50	278.75
Mileage	1,220	600	550	530	750	700	451	980	502	250	830	601	7,964
Juvenile Transport Fees	\$ 1,823.00	\$ 734.00	\$ 617.00	\$ 528.00	\$ 1,025.00	\$ 1,339.00	\$ 612.00	\$ 915.00	\$ 671.00	\$ 306.00	\$ 832.00	\$ 1,035.00	\$ 10,437.00
Probate Transports	0	0	0	1	1	0	1	2	2	0	1	0	8
Probate Transport time	0.00	0.00	0.00	6.00	2.50	0.00	3.25	5.75	4.00	0.00	2.50	0.00	24.00
Mileage	0	0	0	91	3	0	104	198	4	0	10	0	410
Probate Transport Fees	\$ -	\$ -	\$ -	\$ -	\$ -	\$ -	\$ -	\$ -	\$ -	\$ -	\$ -	\$ -	\$ -

**Courthouse Security (Hours)**

HCPC	37.50	31.50	32.75	20.00	11.00	26.75	34.00	17.25	0.00	29.50	12.25	14.50	267.00
West Entrance	169.75	154.25	174.00	203.50	193.25	160.75	178.75	207.25	180.25	202.50	166.25	176.90	2,167.40
Adult Probation	0.00	0.50	0.00	0.50	0.00	0.00	0.25	0.00	0.00	0.00	0.00	0.00	1.25
BMV/ROC/SCEA	0.00	0.00	0.00	0.00	0.00	0.00	0.00	0.00	0.00	0.00	0.00	0.00	0.00
Juvenile Court	10.50	0.00	0.50	0.75	3.75	0.00	0.50	2.25	0.50	0.00	0.00	0.50	19.25
FMC	2.50	22.50	3.50	6.00	21.00	2.25	2.00	19.50	6.75	5.50	13.00	2.00	106.50
In House Court	2.25	2.25	2.25	2.00	1.50	1.00	4.00	0.50	4.75	3.00	1.25	2.00	26.75
<b>Total Security Hours</b>	<b>222.50</b>	<b>211.00</b>	<b>213.00</b>	<b>232.75</b>	<b>230.50</b>	<b>190.75</b>	<b>219.50</b>	<b>246.75</b>	<b>192.25</b>	<b>240.50</b>	<b>192.75</b>	<b>195.90</b>	<b>2,588.15</b>
<b>West Entrance Traffic</b>	7,547	7,523	6,578	6,903	6,551	5,957	8,227	7,283	6,510	6,604	5,493	5,907	81,083

**Warrants**

Warrants Entered	83	78	69	93	63	83	71	74	94	108	82	82	980
Warrants Served	68	74	0	59	68	43	55	42	62	54	67	57	649
Warrants Archived	82	85	82	86	88	66	71	62	86	70	67	77	922
Warrant Fees	\$ 969.00	\$ 1,429.00	\$ 2,126.97	\$ 1,607.00	\$ 968.00	\$ 399.00	\$ 2,258.02	\$ 1,364.51	\$ 1,920.00	\$ 1,512.00	\$ 1,432.00	\$ 1,935.51	\$ 17,921.01
Unentered Warrants Recalled	3	5	10	8	4	62	2	2	11	2	5	3	117
Recalled Warrant Fees	\$ 220.00	\$ 200.00	\$ 443.00	\$ 635.00	\$ 240.00	\$ 240.00	\$ 260.00	\$ 280.00	\$ 400.00	\$ 240.00	\$ 320.00	\$ 340.00	\$ 3,818.00

**Hancock County Sheriff's Office**  
**2013 Statistics**  
**Transport Warrant & Civil Unit**

Category	Jan	Feb	Mar	Apr	May	Jun	Jul	Aug	Sep	Oct	Nov	Dec	Total
<b>Sex Offender Registration</b>													
Sorn Hours	28	13	16	16	7.8	9.5	19	19	22	11	4.3	11	176.6
Adult Registrations:													
Tier I	21	15	19	16	5	11	18	17	6	11	6	7	152
Tier II	3	3	1	6	3	4	1	11	5	10	2	9	58
Tier III	5	3	6	5	5	9	5	3	13	4	7	7	72
Juvenile Registrations:													
Tier I	0	0	0	0	1	1	0	2	0	0	1	0	5
Tier II	0	0	0	2	0	0	0	0	0	0	0	0	2
Tier III	0	1	0	3	0	2	0	0	0	0	0	0	6
<b>Total SORN Registrations</b>	<b>29</b>	<b>22</b>	<b>26</b>	<b>32</b>	<b>14</b>	<b>27</b>	<b>24</b>	<b>33</b>	<b>24</b>	<b>25</b>	<b>16</b>	<b>23</b>	<b>295</b>

<b>Concealed Carry Permits</b>													
CCW Hours	82.75	70.75	87.5	93.95	61.5	58.75	52.75	61.75	52.25	44	46.5	57.25	769.7
CCW Permits Issued	135	140	174	105	95	67	63	77	63	66	84	74	1143

<b>Civilian Fingerprints</b>													
Webcheck	4	7.75	2	8	23	7	12	7	6	5	7	3.25	92
Manual	13	12	4	4	16	9	8	7	6	7	1	2	89
<b>Total Civilian Fingerprints</b>	<b>17</b>	<b>19.75</b>	<b>6</b>	<b>12</b>	<b>39</b>	<b>16</b>	<b>20</b>	<b>14</b>	<b>12</b>	<b>12</b>	<b>8</b>	<b>5.25</b>	<b>181</b>

<b>Juvenile Fingerprints</b>													
	3	3	1	3	1	2	0	0	3	5	1	1	23

<b>Extraditions</b>													
# of Extraditions	0	1	2	1	0	1	0	0	1	1	0	0	7
Extradition Transport Time	0.00	8.00	13.00	5.00	0.00	27.00	0.00	0.00	2.25	21.00	0.00	0.00	76.25
Mileage	0	420	930	291	0	772	0	0	90	513	0	0	3016
Extradition Fees	\$ -	\$ 441.00	\$ 2,503.92	\$ 311.00	\$ -	\$ 703.00	\$ -	\$ -	\$ 2,311.00	\$ 533.00	\$ -	\$ -	\$ 6,802.92

<b>Civil Process</b>													
Sheriff's Sales Received	32	31	28	32	27	37	15	24	16	33	22	18	315
Appraisals	19	26	24	19	30	22	18	12	13	30	4	28	245
Sales Withdrawn	17	3	18	16	10	11	22	4	4	9	6	8	128
Sales Conducted	29	4	19	15	9	17	25	12	11	16	20	16	193
No Bidders	1	0	0	0	0	0	3	0	0	2	0	2	8
Chattel Sales	0	0	0	0	0	0	0	0	0	0	0	0	0
Execution Sales	0	0	0	0	0	0	0	0	0	0	0	0	0
Civil Papers Received	180	167	140	225	153	187	169	210	174	220	170	99	2094
Civil Papers Served	160	149	151	177	139	126	169	159	167	182	126	121	1826
CPO's Served	4	12	13	13	8	7	9	24	20	8	5	14	137

**Hancock County Sheriff's Office**  
**2013 Statistics**  
**Corrections - Population**

Category	Jan	Feb	Mar	Apr	May	Jun	Jul	Aug	Sep	Oct	Nov	Dec	Total
# of Prisoners Booked	191	171	178	206	171	179	191	184	182	168	145	182	2,148
# of Prisoners Released	182	170	178	206	170	176	190	189	176	180	151	178	2,146

Fed'l Contracted Prisoners Held	0	0	0	0	0	0	0	0	0	0	0	0	0
Contracted Prisoners Held (Excluding Findlay Police Dept.)	0	0	0	0	0	0	0	0	0	0	0	0	0

Highest Population	101	96	100	111	104	104	102	106	108	104	103	91	1,230
Lowest Population	83	80	83	84	89	92	83	86	87	84	76	68	995
Average Daily Population	92	85	93	94	95	98	94	95	95	94	93	77	92
# of days Exceeded (98) Population	1	0	2	16	3	12	4	6	8	9	6	0	67

Gender	Jan	Feb	Mar	Apr	May	Jun	Jul	Aug	Sep	Oct	Nov	Dec	Total
Male	143	136	135	146	136	135	144	139	133	131	106	131	1,615
Female	48	35	43	60	35	44	47	45	49	37	39	51	533
<b>Total</b>	<b>191</b>	<b>171</b>	<b>178</b>	<b>206</b>	<b>171</b>	<b>179</b>	<b>191</b>	<b>184</b>	<b>182</b>	<b>168</b>	<b>145</b>	<b>182</b>	<b>2,148</b>

Felons	40	46	38	54	42	41	31	47	43	40	38	40	500
Male	11	8	10	17	15	8	13	14	12	13	14	12	147
Female	51	54	48	71	57	49	44	61	55	53	52	52	647

Misdemeanors	102	86	92	92	93	95	110	92	87	91	66	91	1,097
Male	37	27	32	39	17	35	33	29	35	22	22	37	365
Female	139	113	124	131	110	130	143	121	122	113	88	128	1,462

Length of Stay	Jan	Feb	Mar	Apr	May	Jun	Jul	Aug	Sep	Oct	Nov	Dec	Total
Highest DUI/OMVI	100	10	150	113	113	70	150	167	105	30	100	100	
Low DUI/OMVI	2	2	3	1	2	3	2	3	3	3	3	3	
Average DUI/OMVI	6	3	9	9	9	7	19	12	8	4	7	7	
DWI/OMVI	31	34	30	31	32	31	39	34	33	28	33	28	384
Highest DUS	0	0	10	15	10	0	0	0	0	19	0	0	
Lowest DUS	3	0	0	0	0	0	10	0	0	0	0	0	
Average DUS	0	0	0	0	0	0	0	0	0	0	0	0	
DUS	3	3	1	2	0	6	1	0	2	2	1	1	22
DV	20	123	180	0	0	49	0	95	60	0	0	0	
Lowest DV	0	0	20	5	0	10	0	28	14	0	20	5	
Average DV	0	0	6	0	0	3	0	4	3	0	0	0	
Domestic Violence	12	8	10	25	11	25	21	28	22	18	11	29	220

**Hancock County Sheriff's Office**  
**2013 Statistics**  
**Corrections - Population**

Category	Jan	Feb	Mar	Apr	May	Jun	Jul	Aug	Sep	Oct	Nov	Dec	Total
<b>Age Groups</b>													
Under 20	26	15	17	13	18	18	13	27	12	19	17	18	213
21 - 24	37	43	30	41	35	32	37	31	29	32	30	43	420
25 - 29	41	32	35	47	40	38	46	41	45	29	31	37	462
30 - 39	45	41	46	53	36	51	54	40	56	50	43	47	562
40 - Over	42	40	50	52	42	40	41	45	40	38	24	37	491

Race	Jan	Feb	Mar	Apr	May	Jun	Jul	Aug	Sep	Oct	Nov	Dec	Total
White	145	135	126	158	124	130	144	133	138	124	104	140	1,601
Black	25	17	34	30	30	39	24	34	29	20	27	31	340
Hispanic	17	19	13	18	11	7	21	14	14	22	12	11	179
Asian	3	0	2	0	6	2	2	2	1	1	2	0	21
American Indian	1	0	0	0	0	1	0	1	0	1	0	0	4
Other	0	0	3	0	0	0	0	0	0	0	0	0	3

Marital Status	Jan	Feb	Mar	Apr	May	Jun	Jul	Aug	Sep	Oct	Nov	Dec	Total
Married	35	29	21	50	28	36	35	35	26	35	21	27	378
Single	132	114	131	123	121	117	121	128	118	111	113	129	1,458
Divorced	21	25	26	30	18	22	32	18	37	22	9	24	284
Widowed	3	3	0	3	4	4	3	3	1	0	2	2	28

Offenses	Jan	Feb	Mar	Apr	May	Jun	Jul	Aug	Sep	Oct	Nov	Dec	Total
Violent	6	4	10	6	7	8	9	11	7	4	9	10	91
Property	19	15	8	22	15	10	12	8	20	16	9	16	170
Drug	27	34	26	40	32	27	31	38	28	29	32	33	377
Alcohol	43	44	43	39	43	46	54	45	39	40	43	39	518
Fines & Costs	0	2	0	0	0	0	2	0	0	0	0	0	4
Public Order Offenses	2	3	2	1	1	2	4	1	3	4	2	2	27
Traffic	59	42	47	44	43	47	37	44	52	34	41	48	538
Parole	1	1	3	4	0	1	1	2	3	1	3	2	22
Child Support	14	10	13	18	13	6	5	8	8	9	5	5	114
Miscellaneous	47	50	56	61	46	48	60	43	65	65	40	41	622

Total Number of Recidivisms	Jan	Feb	Mar	Apr	May	Jun	Jul	Aug	Sep	Oct	Nov	Dec	Total
1st Time	52	52	59	61	55	56	49	69	50	55	56	58	672
2 or 3 Times	51	42	47	59	40	44	58	34	46	35	29	51	536
4 or 5 Times	20	25	19	30	25	24	25	19	28	25	17	25	282
6 or 7 Times	19	14	15	13	16	17	9	18	13	15	10	12	171
8 or 9 Times	8	8	9	8	3	7	14	9	12	8	7	5	98
10 or More Times	41	30	29	35	32	31	36	35	33	30	26	31	389

Meal Service	Jan	Feb	Mar	Apr	May	Jun	Jul	Aug	Sep	Oct	Nov	Dec	Total
# of Prisoner Meals Served	7,312	7,302	9,705	8,225	7,714	10,077	7,725	7,671	9,827	8,104	7,526	8,006	99,194

**Hancock County Sheriff's Office**  
**2013 Statistics**  
**Corrections - Program Participation**

	Jan	Feb	Mar	Apr	May	Jun	Jul	Aug	Sep	Oct	Nov	Dec	Total
<b>Mental Health</b>													
Alcohol/Drug Interdiction - Male	0	0	0	0	0	0	0	0	21	25	8	4	58
Alcohol/Drug Interdiction - Female	0	0	0	0	0	0	0	0	13	13	9	0	35
Emotions Management	0	0	0	0	0	0	0	0	0	0	0	0	0
# Referred for One on One Counseling	127	145	148	172	165	158	151	166	141	192	83	108	1,756
Off-Site Mental Health Counseling	0	0	0	0	2	0	0	0	0	1	1	0	4

**General**

Alcoholics Anonymous	37	52	58	60	71	26	92	65	52	64	61	27	665
GED	26	14	12	17	3	21	17	12	8	12	5	1	148
Literacy	0	0	0	0	0	0	0	0	0	0	0	0	0
OT Program (Male)	85	89	51	0	38	35	105	120	40	96	79	63	801
OT Program (Female)	0	0	0	0	0	0	0	25	18	22	11	0	76
Dad's Coaching Clinic	4	3	4	2	3	14	31	14	4	12	17	18	126
Art Program	12	6	10	0	0	10	15	0	0	16	15	23	107
Domestic Violence Class (Male)	9	7	23	7	19	6	20	10	4	10	17	12	144
Domestic Violence Class (Female)	14	15	17	4	16	16	25	15	12	21	15	7	177

**Library**

Number of Visits	251	252	260	154	296	172	233	268	270	341	278	205	2,980
Number of Books Issued	439	402	354	211	374	280	376	431	476	497	440	316	4,596
Number of Bibles Issued	31	30	20	11	13	9	15	7	5	17	13	10	181
Number of Comics Issued	45	61	37	10	95	59	69	34	42	64	59	56	631

**Religious**

Bible Study (Males)	40	30	38	30	37	39	26	14	15	23	20	8	320
Bible Study (Females)	25	26	32	18	17	44	34	38	39	24	32	19	348
Protestant Church Services	56	54	24	53	59	44	49	46	50	19	51	29	534
Catholic Church Services	0	0	0	0	0	0	0	0	0	0	0	0	0
Female Catholic Visits	0	3	2	4	0	0	0	0	0	0	9	0	18



**Hancock County Sheriff's Office**  
**2013 Statistics**  
**Corrections - Program Participation**

	Jan	Feb	Mar	Apr	May	Jun	Jul	Aug	Sep	Oct	Nov	Dec	Total
<b>Medical</b>													
Receiving Screens	155	155	169	187	160	157	159	158	160	159	126	161	1,906
Medical Requests	93	85	104	98	82	83	85	78	108	114	88	76	1,094
Phone Calls to Doctor	2	7	3	3	5	5	3	1	4	3	1	5	42
Office Transports (TW)	11	8	7	10	8	9	9	7	7	7	11	7	101
Prison / Jail Transports	6	16	15	13	14	12	15	9	10	16	7	7	140
# Seen by Facility Doctor	86	78	81	74	89	73	54	63	74	78	70	45	865
# Seen by Facility Nurse	88	100	113	105	68	64	67	61	62	65	91	35	919
# Seen by Officer	86	80	83	105	56	67	73	66	45	58	87	38	844
Responded to Accidents	2	0	1	2	1	3	1	2	0	0	0	2	14
Number of TB Tests	50	42	42	57	40	44	50	46	40	42	29	7	489
TB Tested Positive	0	0	0	0	0	0	0	2	0	0	0	0	2
Daily Count Diabetics	60	54	64	38	18	48	42	38	13	1	21	3	400
Number of Lab Tests	1	3	3	0	1	3	4	0	2	1	0	0	18
Mental Health Requests	67	80	71	110	90	63	81	55	63	62	60	30	832
Prescreener Called	8	10	4	6	3	11	3	9	8	4	4	9	79
# of Prescriptions Filled	0	0	0	0	0	0	0	0	0	0	0	0	0
# of Psychotropic Prescriptions Filled	0	0	0	0	0	0	0	0	0	0	0	0	0
Avg# Inmates Receiving Psychotropic Meds	26	26	22	24	23	23	23	23	23	26	22	20	281
# Inmates on Special Diets	61	57	71	38	45	54	41	43	21	27	40	17	515
# Off-Site Long Term Mental Health Trtmt	2	0	0	0	0	0	0	0	0	1	2	3	8
(Northcoast Behavioral Center - Toledo)													
# Off-Site Medical Care	2	3	1	0	3	3	2	3	8	3	6	4	38
(ER, Doctor's Office, Dentist)													

	Jan	Feb	Mar	Apr	May	Jun	Jul	Aug	Sep	Oct	Nov	Dec	Total
<b>Inmate Worker Program</b>													
# of Male Prisoners	27	27	23	30	27	27	31	26	12	28	19	26	303
# of Female Prisoners	11	11	7	3	12	16	17	15	20	21	13	10	156
# of Outside Work Details	0	1	1	4	6	1	1	3	0	5	3	1	26
# of Car Washes/Waxes Completed	40	36	55	54	61	26	36	46	40	50	29	31	504

**Hancock County Sheriff's Office**  
**2013 Statistics**  
**Miscellaneous Administrative Statistics**

Category	Jan	Feb	Mar	Apr	May	Jun	Jul	Aug	Sep	Oct	Nov	Dec	Total
<b>Records</b>													
Reports Processed	506	311	334	393	343	396	390	350	410	445	401	568	4,847
Public Record Requests	53	51	56	65	42	72	70	38	66	59	68	49	689
Local Background Checks	40	22	38	45	38	33	28	49	27	39	36	17	412
<b>General Fund Expenditures</b>													
General Office	\$ 76,052.32	\$ 44,866.81	\$ 67,224.33	\$ 39,732.72	\$ 34,395.65	\$ 33,214.76	\$ 33,394.54	\$ 49,964.46	\$ 37,850.71	\$ 37,512.84	\$ 44,227.19	\$ 31,382.31	\$ 529,818.64
Enforcement	\$ 275,833.01	\$ 209,911.05	\$ 277,103.90	\$ 204,814.27	\$ 219,331.21	\$ 206,226.05	\$ 204,245.71	\$ 280,246.33	\$ 204,622.81	\$ 225,678.65	\$ 221,370.03	\$ 203,920.31	\$ 2,733,303.33
Transport Warrant	\$ 33,351.08	\$ 33,245.94	\$ 49,519.57	\$ 35,904.14	\$ 36,409.27	\$ 34,357.50	\$ 35,785.94	\$ 48,765.63	\$ 34,180.77	\$ 33,948.45	\$ 35,069.02	\$ 33,102.79	\$ 443,640.10
Total Enforcement	\$ 385,236.41	\$ 288,023.80	\$ 393,847.80	\$ 280,451.13	\$ 290,136.13	\$ 273,798.31	\$ 273,426.19	\$ 378,976.42	\$ 276,654.29	\$ 297,139.94	\$ 300,666.24	\$ 268,405.41	\$ 3,706,762.07
Corrections	\$ 229,600.78	\$ 226,200.77	\$ 280,623.24	\$ 238,285.58	\$ 266,164.76	\$ 208,765.07	\$ 226,775.21	\$ 314,224.71	\$ 223,443.89	\$ 238,096.12	\$ 248,053.70	\$ 210,343.58	\$ 2,910,577.41
ROC	\$ -	\$ -	\$ -	\$ -	\$ -	\$ -	\$ -	\$ -	\$ -	\$ -	\$ -	\$ -	\$ -
<b>Total Gen'l Fund Expenditures</b>	<b>\$ 614,837.19</b>	<b>\$ 514,224.57</b>	<b>\$ 674,471.04</b>	<b>\$ 518,736.71</b>	<b>\$ 556,300.89</b>	<b>\$ 482,563.38</b>	<b>\$ 500,201.40</b>	<b>\$ 693,201.13</b>	<b>\$ 500,098.18</b>	<b>\$ 535,236.06</b>	<b>\$ 548,719.94</b>	<b>\$ 478,748.99</b>	<b>\$ 6,617,339.48</b>
<b>General Fund Receipts</b>													
Fees & Fines Collected	\$ 12,525.60	\$ 13,346.51	\$ 13,431.08	\$ 8,491.58	\$ 9,489.24	\$ 11,353.39	\$ 8,938.33	\$ 12,640.16	\$ 11,441.12	\$ 8,221.06	\$ 13,774.16	\$ 7,335.55	\$ 130,987.78
Security Contracts - General Fund	\$ 5,058.04	\$ 1,580.10	\$ 2,773.76	\$ 2,325.91	\$ 1,605.10	\$ 4,577.94	\$ 2,780.09	\$ 3,665.86	\$ 2,859.02	\$ 2,876.56	\$ 3,551.85	\$ 2,981.80	\$ 36,636.03
Prisoner Housing	\$ 61,847.50	\$ 63,013.20	\$ 92,590.54	\$ 43,600.44	\$ 247.50	\$ 48,706.78	\$ 36,158.94	\$ 96,673.96	\$ -	\$ 54,037.50	\$ 51,141.65	\$ 54,647.58	\$ 602,665.59
Resident Housing	\$ 50.00	\$ 25.00	\$ 25.00	\$ -	\$ 25.00	\$ 25.00	\$ 25.00	\$ 25.00	\$ 25.00	\$ 25.00	\$ 25.00	\$ 25.00	\$ 300.00
Other	\$ 3,489.01	\$ 3,139.27	\$ 10,592.73	\$ 3,091.04	\$ 5,255.31	\$ 877.59	\$ 4,336.50	\$ 6,614.29	\$ 1,906.96	\$ 2,874.71	\$ 907.00	\$ 1,515.59	\$ 44,600.00
<b>Total to General Fund</b>	<b>\$ 82,970.15</b>	<b>\$ 81,104.08</b>	<b>\$ 119,413.11</b>	<b>\$ 57,508.97</b>	<b>\$ 16,622.15</b>	<b>\$ 65,540.70</b>	<b>\$ 52,238.86</b>	<b>\$ 119,619.27</b>	<b>\$ 16,232.10</b>	<b>\$ 68,034.83</b>	<b>\$ 69,399.66</b>	<b>\$ 66,505.52</b>	<b>\$ 815,189.40</b>
<b>Grant Funds Received</b>	\$ 1,856.11	\$ 3,171.64	\$ 1,451.39	\$ 9,948.22	\$ 2,636.52	\$ 5,589.56	\$ 17,232.34	\$ -	\$ -	\$ 47,156.47	\$ 13,444.55	\$ 15,000.00	\$ 117,486.80
<b>Security Contracts - Special Fund</b>	\$ 12,366.00	\$ 5,453.06	\$ 6,870.00	\$ 5,496.00	\$ 5,612.80	\$ 7,016.00	\$ 5,612.80	\$ 7,016.00	\$ 5,612.80	\$ 5,612.80	\$ 5,612.80	\$ 7,016.00	\$ 79,297.06
<b>Special Fund Receipts</b>	\$ 26,185.91	\$ 16,501.38	\$ 21,193.34	\$ 18,105.51	\$ 16,564.47	\$ 14,161.24	\$ 19,320.39	\$ 13,000.53	\$ 11,241.63	\$ 11,763.00	\$ 13,348.71	\$ 13,292.45	\$ 194,678.56
<b>Receipts</b>	<b>\$ 123,378.17</b>	<b>\$ 106,230.16</b>	<b>\$ 148,927.84</b>	<b>\$ 91,058.70</b>	<b>\$ 41,435.94</b>	<b>\$ 92,307.50</b>	<b>\$ 94,404.39</b>	<b>\$ 139,635.80</b>	<b>\$ 33,086.53</b>	<b>\$ 132,567.10</b>	<b>\$ 101,805.72</b>	<b>\$ 101,813.97</b>	<b>\$ 1,206,661.82</b>