



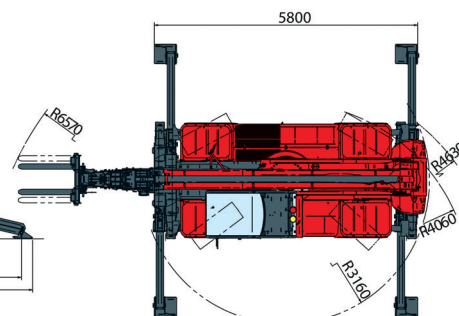
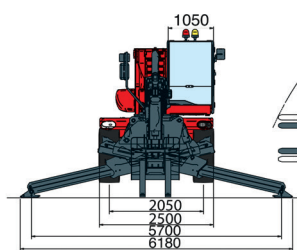
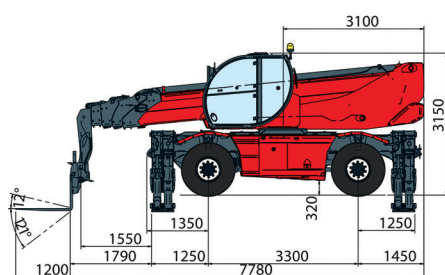
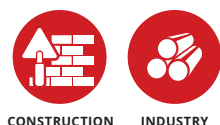
Maximum lifting height: 29,90 m  
Maximum reach: 26,00 m  
Electronically controlled hydrostatic transmission  
Automatic levelling device  
Scissors stabilizers

## RTH 6.30 SH

MACHINE MODEL	Rotary telescopic handler	RTH 6.30 SH	
	Maximum lifting capacity	6,000kg (center of gravity 600 mm)	
	Maximum lifting height	29.90 m	
	Rotation	360° (continuous)	
ENGINE	Type	Mercedes OM 934 LA Stage IV	Mercedes OM 924 LA Stage IIIA
	Rated Power	150 kW - 203 HP at 2,200 rpm	145 kW - 196 HP at 2,200 rpm
	Maximum torque	800 Nm at 1,200-1,600 rpm	705 Nm at 1,200-1,600 rpm
	Displacement	5.13 l	4.8 l
	Cylinders	4 in line	4 in line
	Fuel	Diesel direct injection turbocharged	Diesel direct injection turbocharged
	Cooling System	Water – intercooler	Water – intercooler
TRANSMISSION	Type	Hydrostatic	
	Model	Bosch – Rexroth	
	Maximum pressure	500 bar	
	Displacement	Variable displacement pump electronically controlled Variable displacement motor	
	Gearbox	2 speed drop box forward-reverse	
AXLES AND BRAKES	Type	Axles with epicyclic reduction gear	
	Rear axle	Oscillating and steering with hydraulic locking	
	Front axle	Oscillating and steering with automatic levelling +/- 10°	
	Service brake	Hydraulically activated, oil-immersed in-board multi-disc type on each axle	
	Parking brake	Hydraulic with negative action	
	Tyre sizes	445/65 R 22,5	
PERFORMANCE	Max. travel speed	40 km/h	
	Drawbar pull	80 kN	
	Gradeability	40%	
	Turning circle (at forks)	6,570 mm	
WEIGHTS	Total unladen	21,830 kg	
	Front axle unladen (boom retracted and lowered)	10,830 kg	
	Rear axle unladen (boom retracted and lowered)	11,000 kg	
TANK AND SYSTEM CAPACITIES	Diesel fuel tank	180 l	180 l
	AdBlue	40 l	n.a.
	Hydraulic fluid	220 l	220 l
	Engine oil	20.5 l	20.5 l
	Coolant	36 l	36 l
HYDRAULIC CIRCUIT FOR MOVEMENTS	Max. working pressure	350 bar	
	Circuit type	Load sensing	
	Service pump	Bosch Rexroth – Variable displacement	
	Distributor for boom and turret movements	Danfoss – Electroproportional valve SIL 2	
	Distributor for stabilisers	Bosch Rexroth – Electro-hydraulics controls	
	Movements control	2 joystick Danfoss with two shafts with dead man safety device - Management with CAN bus technology	
STANDARDS MET	EN 13849: concerning the safety of all machine controls EN 13000: concerning standards for hydraulic cranes EN 280: concerning standards for mobile elevating work platforms FOPS/ROPS EU 2016/1628: concerning engine emissions standards EN 1459-2: concerning standards for slewing variable-reach trucks		

The data in this brochure are informative and subject to change without notice

## MAIN SECTORS

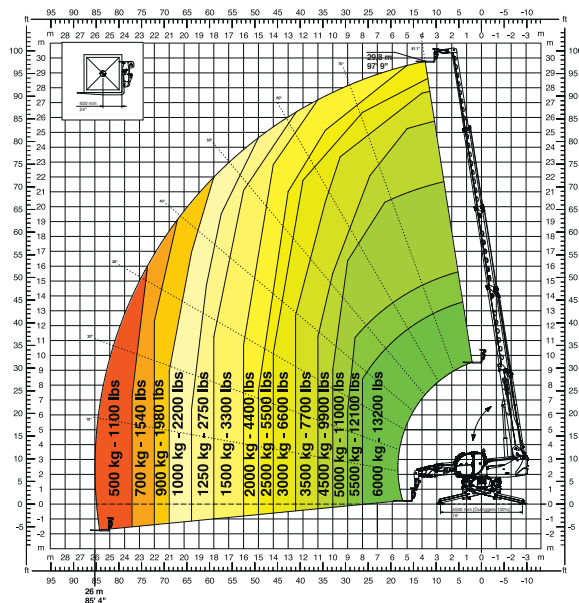


## Magni Telescopic Handlers srl

Via Magellano, 22 - 41013 Castelfranco Emilia, Modena, Italia - Tel: +39 059 8630811 - Fax: +39 059 8638012  
 commerciale@magnith.com - www.magnith.com

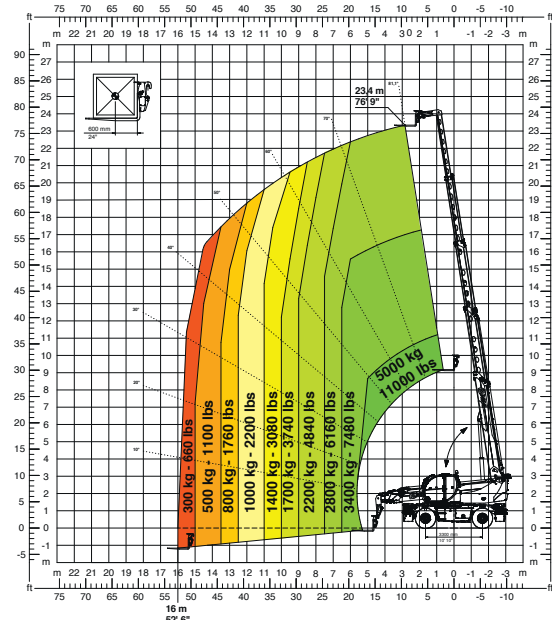
## 360° LOAD CHART ON FULLY EXTENDED STABILISERS

ON STABILISERS



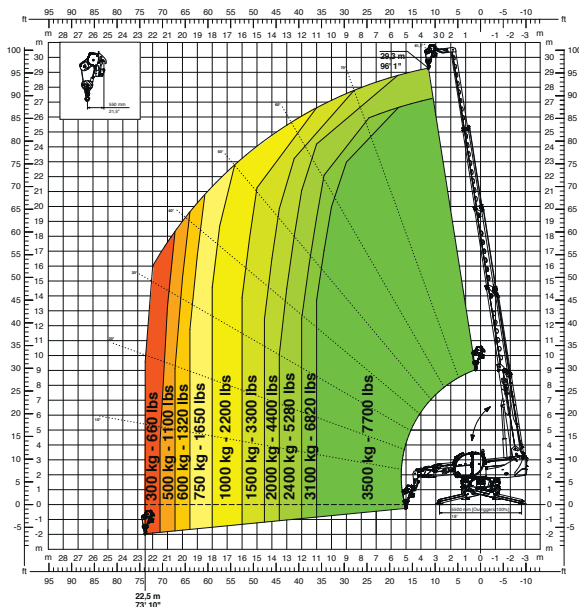
## FRONT LOAD CHART ON TYRES

ON TYRES



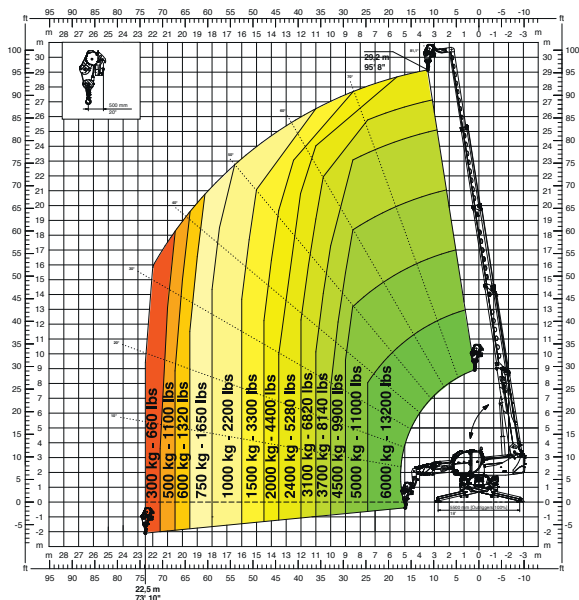
## WINCH 3,500 kg

W 3,5



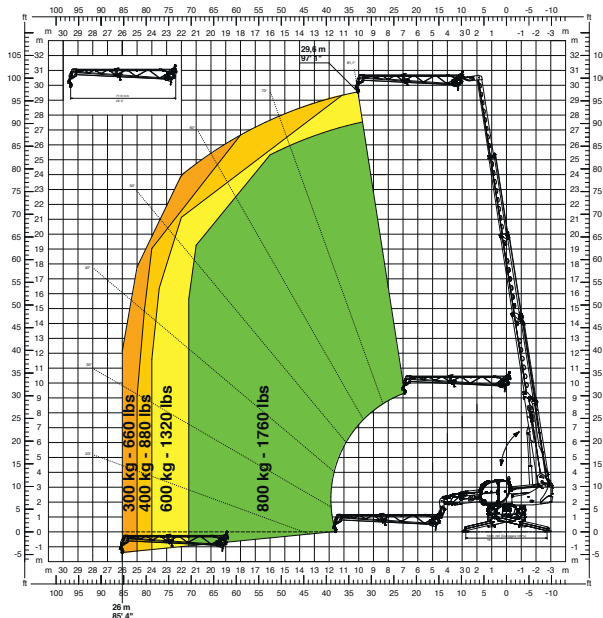
## WINCH 6,000 kg

W 6



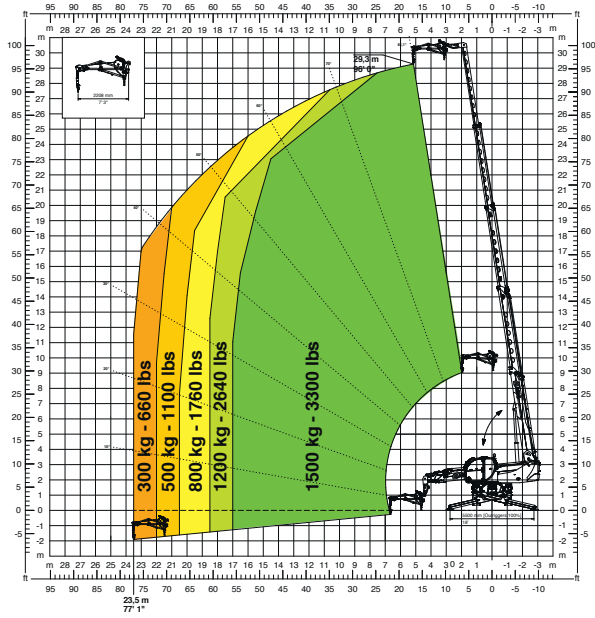
## JIB WITH WINCH 800 kg

JW 800



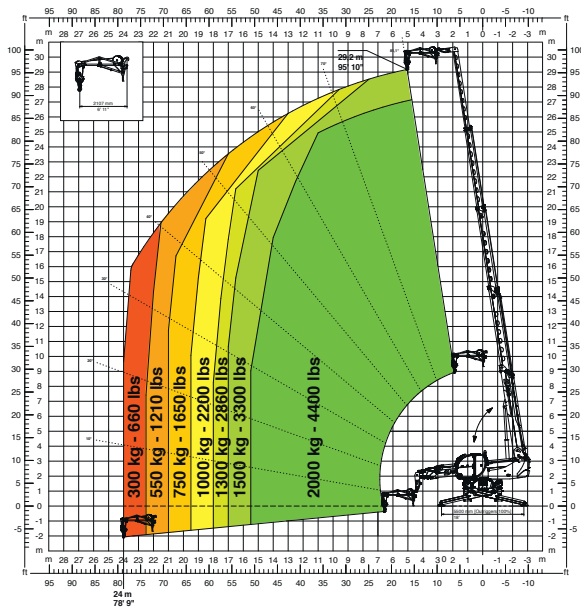
## JIB WITH WINCH 1,500 kg

JW 1500



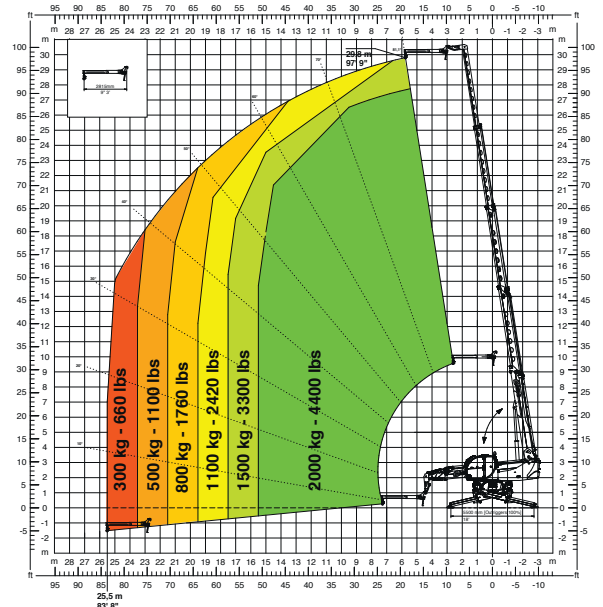
## JIB WITH WINCH 2,000 kg

JW 2000



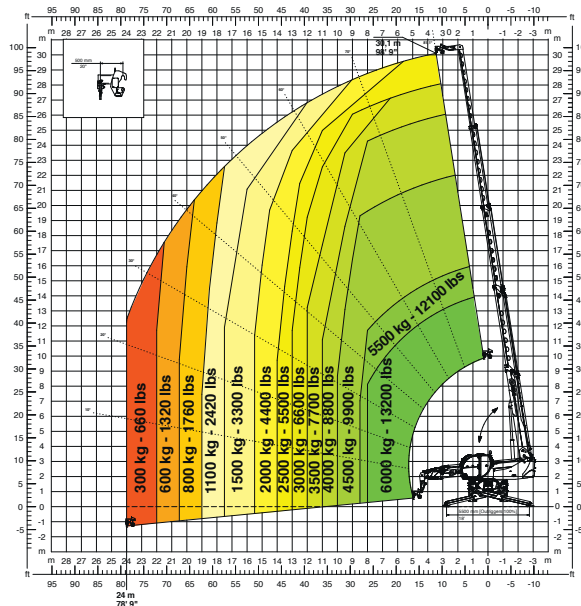
## JIB 2,000 kg

J 2000



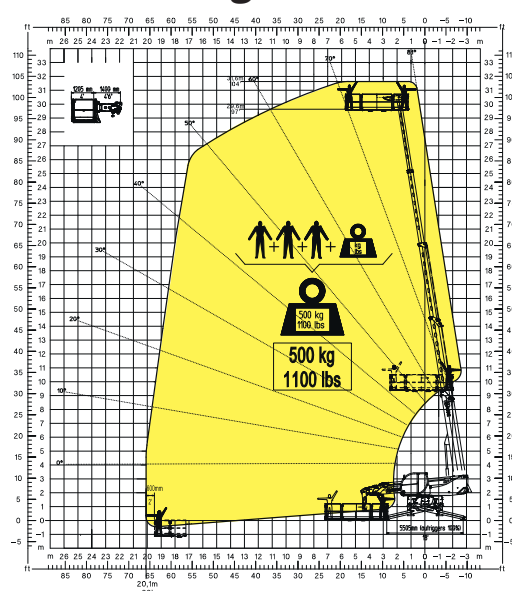
## HOOK 6,000 kg

H 6



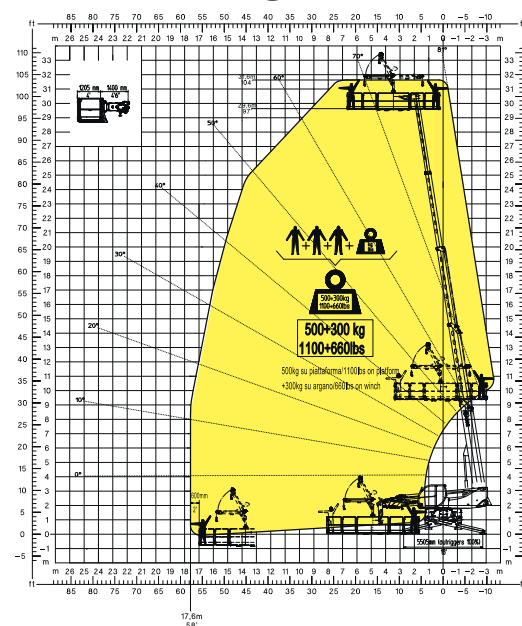
## ROTATING EXTENDABLE MEN BASKET 500 kg

REP 2-4,5



## BASKET 6,5 m 500 kg WITH WINCH 300 kg

REP 5,2-6,5 W0,3



## ROTATING EXTENDABLE MEN BASKET 1,000 kg

REP 10.2-4,7

