

Let the light flood in

with our beautiful and practical roof lanterns and roof lights

Flat Rooflight

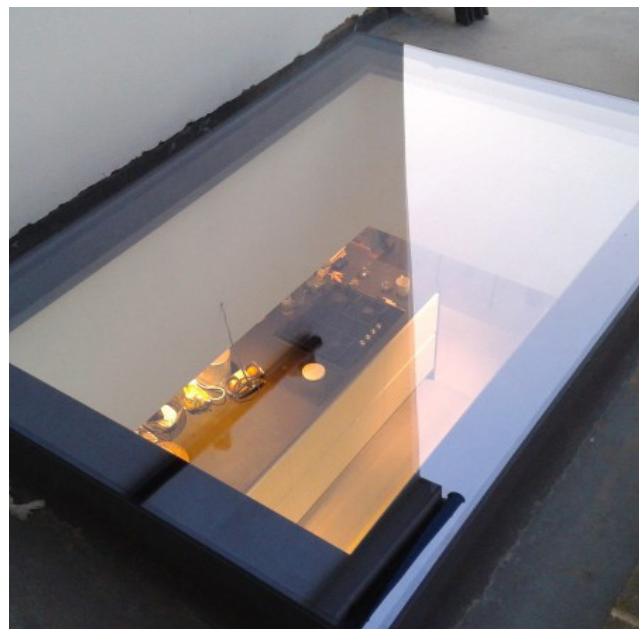
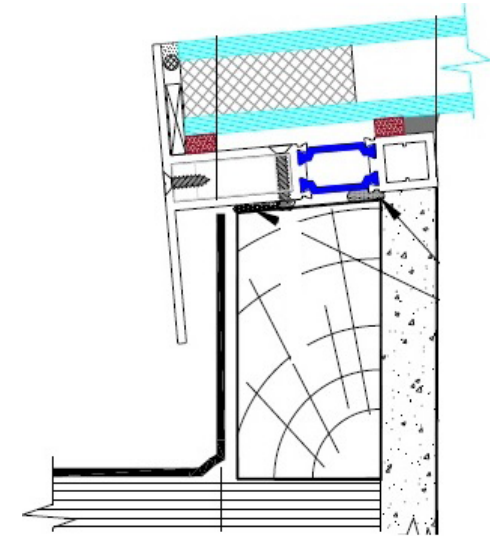
This is a unique flat Rooflight system that is ultra slim and aesthetically pleasing. It's contemporary style suits both a modern and period building to achieve a great look wherever it is situated.

Performance of our Rooflight is industry leading in U values and weather durability which has been tested to make sure the product surpasses all current regulations and will stand the test of time. All our Rooflights are pitched at 5 degrees as an industry standard to ensure minimal pooling on the Rooflight. We only use top specification glass structurally calculated by glass engineers to ensure safety and longevity of our products.

All components used in the manufacture and installation are all designed and made in Britain. All of our Rooflights are hand made by highly trained staff who implement strict manufacturing guidelines and quality control to make sure the first is as good as the last.

Specification

- Thermally broken aluminium comprising of 2 x 27mm polyamide inserts
- Finished in a tough and long lasting polyester powdercoated paint
- 48mm overhang for a better weather tight seal
- Available in RAL colour 7015m / 7016m / 9005m
- Extruded frame can accommodate from 20mm - 44mm DGU, plus walk-on glass
- Glass from 1.0 U value to 0.2
- Glass spec is subject to size



Opening Rooflight

Our Opening Rooflight is available in electric or manually operated versions. Boasting market leading U-values along with industry leading water tightness using a triple seal system. A first of its kind which is fully frameless internally, allowing more sky and less frame, and externally keeping framework to a minimum to achieve the slimline appearance. This, together with our Frameless Flat Rooflight, boasts only the best in high end components for safe working and product longevity.

As usual, our Opening Rooflight comes with Solar Reflective Self-Cleaning Glass as standard. With a glass U-value of just 1.0, this is unrivalled in its design and performance.

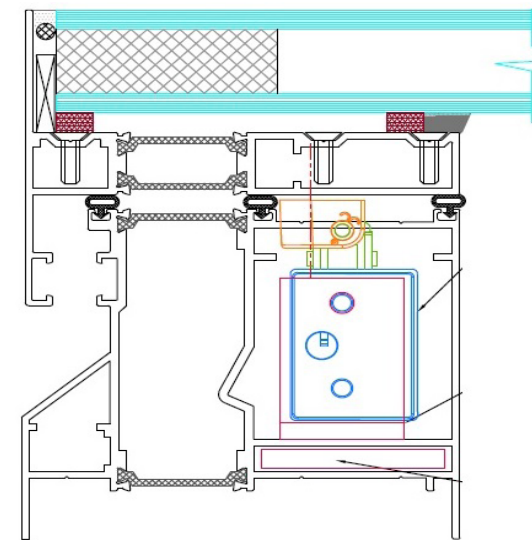
- 4 x 35mm Polyamide inserts
- Triple Seal Gasket System
- Available in RAL 7015m/7016m/9005m
- Glass Specs - 6/18/6 or 6/20/4
- Double Glazed or Triple Glazed option

Electric Opening Rooflight

- Electric Opening of 400mm
- Includes wireless remote
- Rain sensor available
- Wind & rain sensor available
- Rocker switch available
- 230 volt motors

Manual Opening Rooflight (Maintenance Hatch)

- 90 degree opening
- Stainless Steel T handle
- This is generally used for maintenance
- Double lock security latches
- Steel strengthened frame
- Gas strut assisted



Frameless Roof Lantern

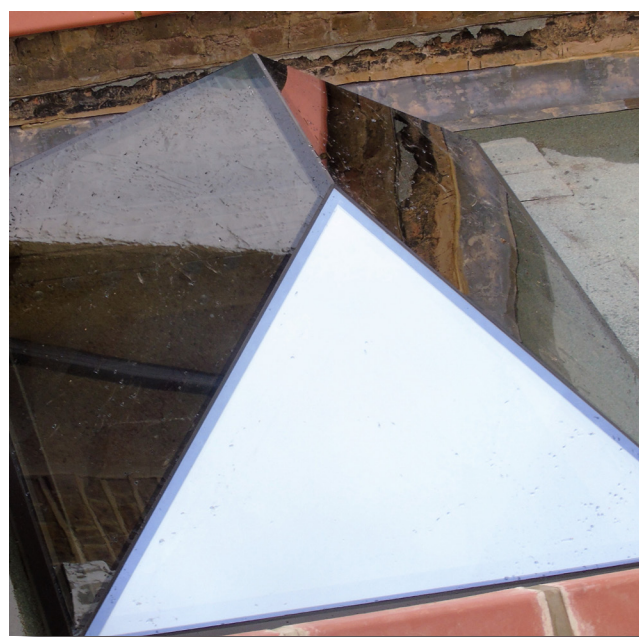
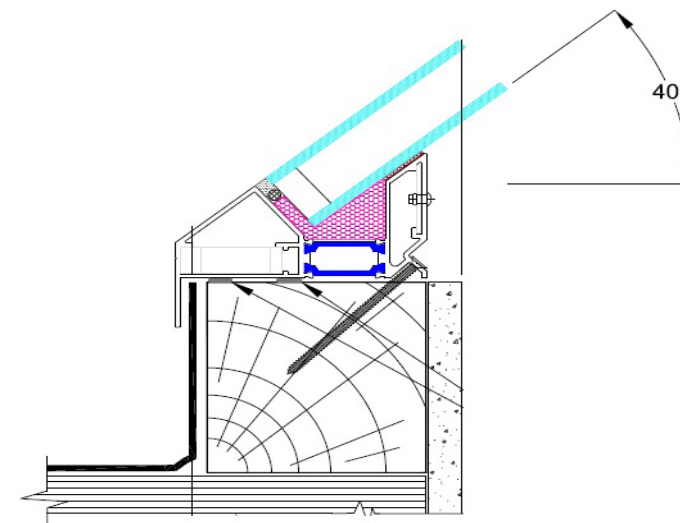
The Ultra-modern Roof Lantern/Pyramid is one of the slimmest designs on the market today, providing more light transmittance than others.

Traditionally, other companies use bars which makes them bulky and obtrusive and U values are also effected , making ours more efficient and aesthetically pleasing.

Consisting of glass to glass joins with thermal foam barrier using a glass of just 1.2 U value the product will keep you warm even in the harshest of conditions.

Specification

- Thermally broken aluminium comprising of 2 x 32mm polyamide inserts
- Finished in a tough and long lasting polyester powdercoated paint
- 23mm overhang for a better weather tight seal
- Available in RAL 7015m / 7016m / 9005m
- Glass spec is 4 / 22 / 4 heat soaked toughened glass
- Solar reflective self cleaning glass
- Sleek structural glass to glass joins





**Pavilion
Glass**

For the widest choice in roof lights and lanterns

Speak to Pavilion Glass now on



0800 298 8569 / 01903 252 095 / 01273 830 392

18 Northbrook Rd, Worthing, BN14 8PN