

Lepide Exchange Recovery Manager 16.0

What is new document

This document explains what is new in the latest version of the Lepide Exchange Recovery Manager 16.0

Copyright

Lepide Exchange Recovery Manager, any and all components, any and all accompanying software, files, data and materials, this guide, and other documentation are copyright of Lepide Software Private Limited, with all rights reserved under the copyright laws. This user guide cannot be reproduced in any form without the prior written permission of Lepide Software Private Limited. No Patent Liability is assumed, however, on the use of the information contained herein.

© Lepide Software Private Limited, All Rights Reserved.

Warranty Disclaimers and Liability Limitations

Lepide Exchange Recovery Manager and all accompanying software, files, data, and materials are distributed and provided AS IS and with no warranties of any kind, whether expressed or implied. In particular, there is no warranty for any harm, destruction, impairment caused to the system where these are installed. You acknowledge that good data processing procedure dictates that any program, listed above, must be thoroughly tested with non-critical data before there is any reliance on it, and you hereby assume the entire risk of all use of the copies of LepideAuditor Suite and the above listed accompanying programs covered by this License. This disclaimer of warranty constitutes an essential part of this License.

In no event does Lepide Software Private Limited authorize you or anyone else to use LepideAuditor Suite and the above listed accompanying programs in applications or systems where LepideAuditor Suite and the above listed accompanying programs' failure to perform can reasonably be expected to result in a significant physical injury, or in loss of life. Any such use is entirely at your own risk, and you agree to hold Lepide Software Private Limited harmless from any and all claims or losses relating to such unauthorized use.

Trademarks

Lepide Exchange Recovery Manager is a registered trademark of Lepide Software Pvt Ltd. All other brand names, product names, logos, registered marks, service marks and trademarks (except above of Lepide Software Pvt. Ltd.) appearing in this document are the sole property of their respective owners. These are purely used for informational purposes only. We have compiled a list of such trademarks, but it may be possible that a few of them are not listed here.

Windows XP®, Windows 7®, Windows 8®, Windows 8.1®, Windows 10®, Windows 2000 Server®, Windows 2000 Advanced Server®, Windows Server 2003®, Windows Server 2003 R2®, Windows Server 2008®, Windows Server 2008 R2®, Windows Server 2012®, Exchange Server 2003®, Exchange Server 2007®, Exchange Server 2010®, Exchange Server 2013®, SharePoint Server®, SharePoint Server 2010®, SharePoint Foundation 2010®, SharePoint Server 2013®, SharePoint Foundation 2013®, SQL Server 2005®, SQL Server 2008®, SQL Server 2008 R2®, SQL Server 2012®, SQL Server 2014®, SQL Server 2016®, SQL Server 2005 Express Edition®, SQL Server 2008 Express®, SQL Server 2008 R2 Express®, SQL Server 2012 Express®, SQL Server 2014 Express®, .NET Framework 4.0, .NET Framework 2.0, Windows PowerShell® are registered trademarks of Microsoft Corporation.

Intel and Pentium are registered trademarks of Intel Corporation.



Table of Contents

Table of Contents	3
1. Introduction.....	4
2. New Additions.....	4
2.1 Specify EDB version for accurate recovery	4
2.2 Extended recovery with trial version	5
3. Improvements.....	6
3.1 Enhanced Recovery of Exchange 2013 and 2016 mailboxes	6



1. Introduction

Lepide Exchange Recovery Manager provides an easy way to repair, recover and restore Exchange database regardless of the level of corruption. The application can carry it out full or partial recoveries with minimum human intervention. Exchange administrators on a daily basis must perform Exchange related tasks like EDB to PST conversion, extracting EDB from backups, restoring OSTs, searching for emails etc. Lepide Exchange Recover Manager can help carry out these activities with ease.

Important features of software are:

- ✓ Repair and restore all types of Exchange databases.
- ✓ Repair Live Exchange EDBs.
- ✓ Export EDBs to different file types.
- ✓ Search, select and export emails from Exchange databases.
- ✓ Migrate Mailboxes and Public Folders.
- ✓ Available in free trial, standard and professional editions.

2. New Additions

Additions in the new version are.

2.1 Specify EDB version for accurate recovery

A new option 'Ask for EDB Version' has been added under Tools-> Settings. If this option is enabled, at the time of adding a new EDB in source, users will get the option of specifying the Exchange Server with which the EDB will be created. The option is available as the first setting in the 'Advanced' tab of 'Settings' window.



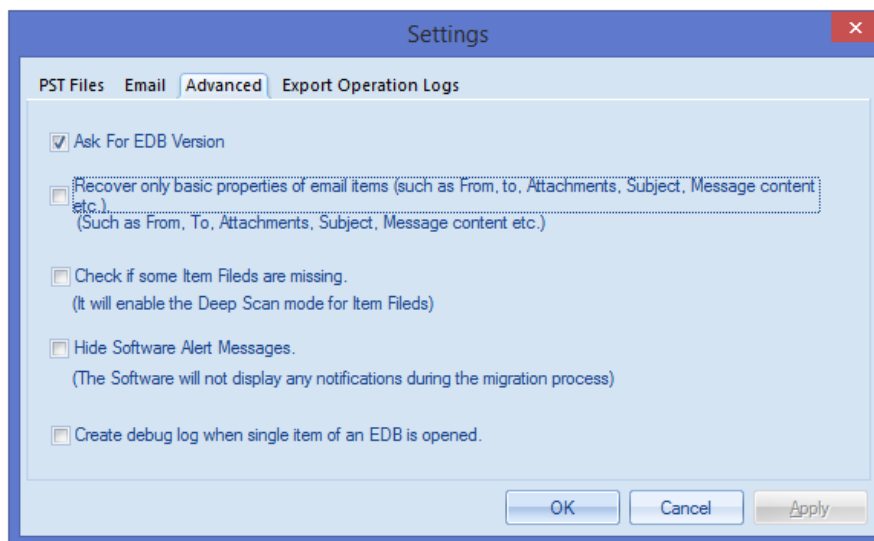


Figure 1: 'Ask for EDB Version' setting

When you go to add an EDB in the source you will see the following message. Here you can simply select the Exchange Server version with which the EDB file will be created.

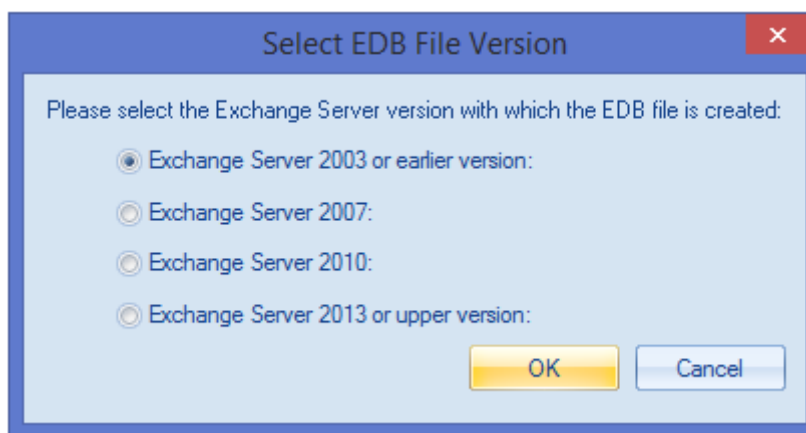


Figure 2: Select EDB file version

2.2 Extended recovery with trial version

The trial version of Lepide Exchange Recovery Manager 16.0 now allows users to work with up to 25 items per folder while copying, exporting and restoring folders. This will not only make it simple to use, but it will also let them test its functionality with ease even when working with a large number of emails.

3. Improvements

3.1 Enhanced Recovery of Exchange 2013 and 2016 mailboxes

The new version includes enhanced recovery of Exchange 2013 and 2016 mailboxes which will leave the recovered mailboxes in the same state as they were originally in. This is a welcome addition for users who were previously not satisfied with the level of 2013 and 2016 mailbox recovery.

