



# Unlock operational efficiencies and business success

Future products will be smarter, more interconnected and feature complex. The challenges facing today's Manufacturers include; labor shortages, increased global competition, economic trends, and keeping up with new technologies. As a result, this places even greater pressure on time and cost while striving to achieve raising standards in quality.

How can Actify effectively support manufacturers to bring increasingly complex, high-quality products to market within ever shorter product life cycles? Actify identifies interdisciplinary enterprise collaboration holds the key to unlock operational efficiencies and business success.

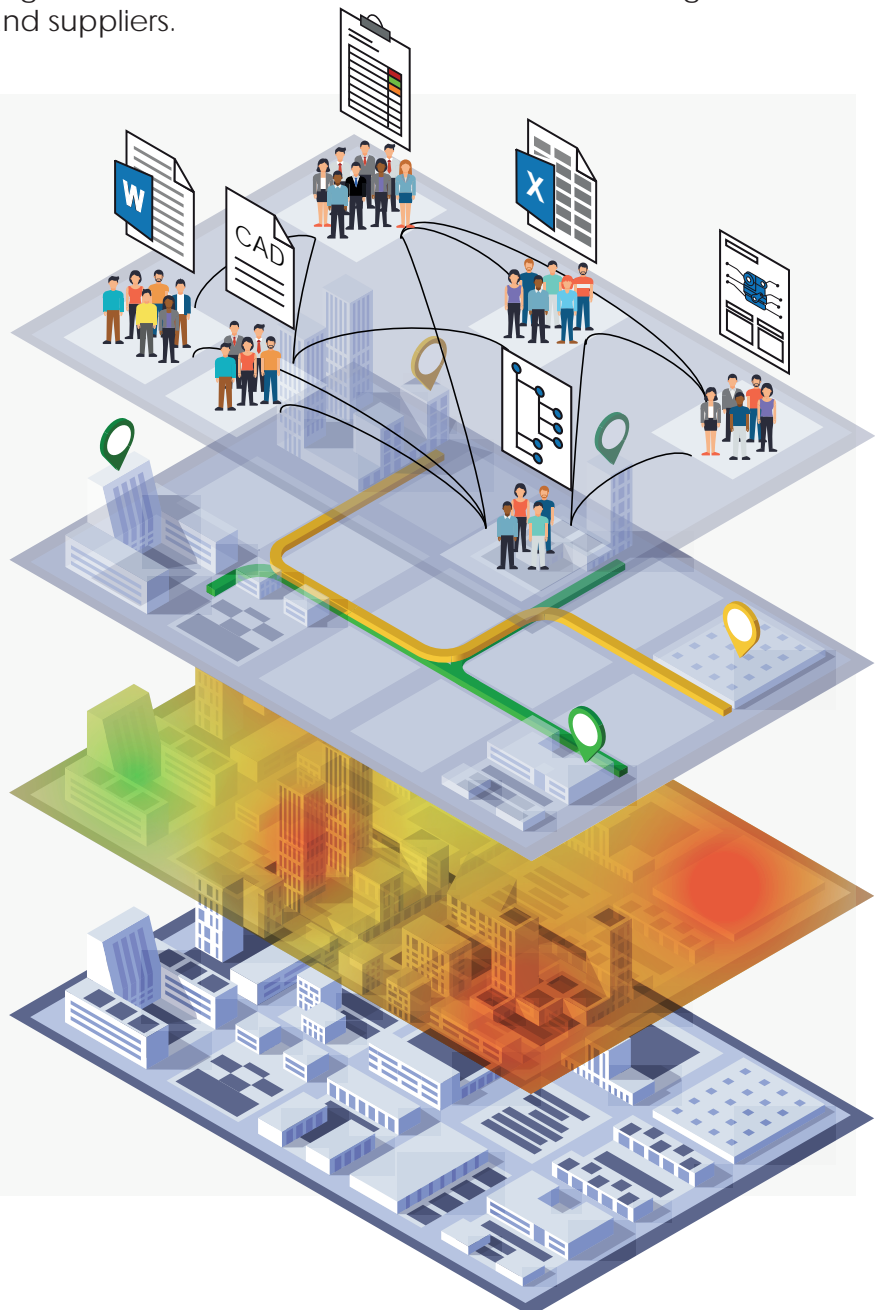
Through technology, Actify help manufacturers unlock the power of their data. We amplify underlying business processes, making operations faster, better and cheaper. Actify is more than an economical technology provider, we deliver the greatest return on every dollar invested!

## Enterprise Collaboration

The enterprise is a multidisciplinary environment. In most cases, business disciplines do not cooperate and tend to carry out their work in remote and siloed business environments. Communication across various disciplines can be highly divergent because of the terminology, methodology, and unique file formats. There are additional cultural and linguistic differences that arise when collaborating with geographically dispersed teams, partners and suppliers.

Multidisciplinary collaboration involves more than just processing large volumes of enterprise data. Even more important are the different ways in which each discipline views the data and the different capabilities needed for them to perform their work.

Actify provides an enterprise solution that enables organizations to align processes, engage stakeholders and act strategically to maximize business results. The software helps companies gain a competitive edge through streamline operations and processes across the enterprise while increasing quality and productivity levels. Actify helps manufacturers collate and organize disparate program data, providing a highly systematic and structured environment for continuous improvement and optimization of today's heterogeneous enterprise.



# Transform data into usable business knowledge

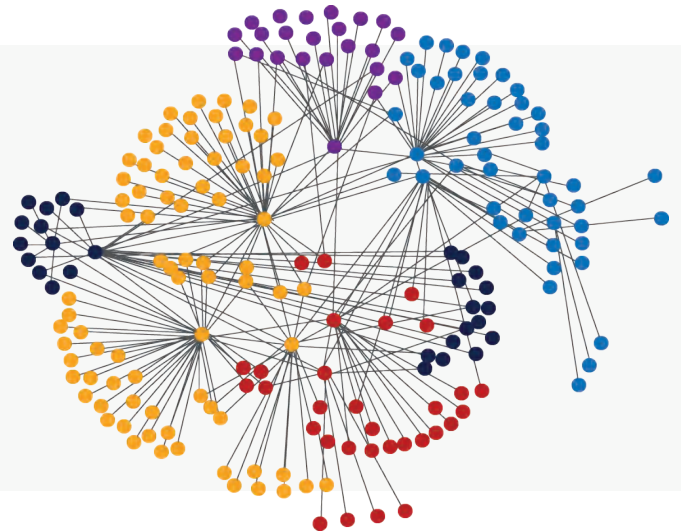
It is no longer believed that a single monolithic enterprise application is sustainable or robust enough to serve every diverse business function. The complexity of enterprise processes, organizational requirements, and information constructs cannot be addressed by any single solution.

Actify understands that a lot of work is discipline-specific. Therefore, a host of specialized authoring applications will currently exist across various disciplines, such as mechanical design, simulation, production, etc. The new business paradigm promotes the implementation of various best-of-class business systems seamlessly integrated and connected using an architecture that is resilient to change.

## Actify's Enterprise Solutions

Actify's enterprise solutions are designed to complement other enterprise applications and provide the core functionality needed for managing, merging and leveraging data across the enterprise. Actify's Enterprise Collaboration Platform integrates a host of organizational disciplines and natively supports visualization, collaboration, decision making, and intellectual property protection, among other capabilities.

Actify provides an enterprise platform underpinned by a graph-oriented database which enables flexible deployment, tailored to client specific needs. With Actify, you can manage your digital assets from idea through the end of product life. Associate all project information, providing context and a platform to capture change, review past decisions and provide insight to optimally make new decisions.



Many enterprise technologies in their goal of owning the enterprise have developed technically deep applications. From our experience, not everyone has access to PLM, ERP and other enterprise systems. The challenge that these traditional systems face is that usage is constrained to a department, such as Engineering or Production. Often due to limited, time, budget or through lack of adoption. Additionally, many organizations tend to deploy these applications exclusively within the departments where they perceive they will gain the most value. These rigid business systems can cause a company to adapt, comply and operate in accordance with the vendor's application.

We believe that a company is defined by its business processes which provide a unique competitive advantage. That's why Actify's technology is flexible and neutral, we adapt to meet the customers need. What drives Actify as a company is a desire to complement and accelerate our customers business performance without sacrificing their core competencies, or their identity.



# The benefit of enterprise CAD collaboration

While CAD tools themselves have come a long way in the past 30 years, most people think CAD files are exclusively for their company's engineering and design departments. However, the business value of using CAD beyond the design team is incredible. Many departments across the organization need access to valuable information contained within CAD files.

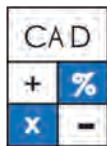
Even if you are locked into using another CAD system as your primary CAD authoring platform, you can still take full advantage of Actify's neutral enterprise CAD package to support communication and collaboration.

## Enterprise CAD Access

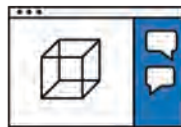
Historically, it has been too expensive to provide CAD tools to non-engineers and in some cases the ROI for engineers who aren't using CAD on a daily basis is questionable. With Actify's Enterprise CAD offering, this is no longer an obstacle and giving your entire organization access to CAD data has become very affordable. You no longer need to ration your CAD access, everyone in your company should have access to affordable CAD tools to gather information needed to support their daily tasks.



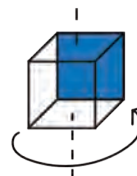
CAD analysis



CAD calculations



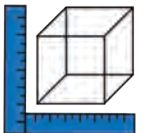
Collaboration



CAD visualization

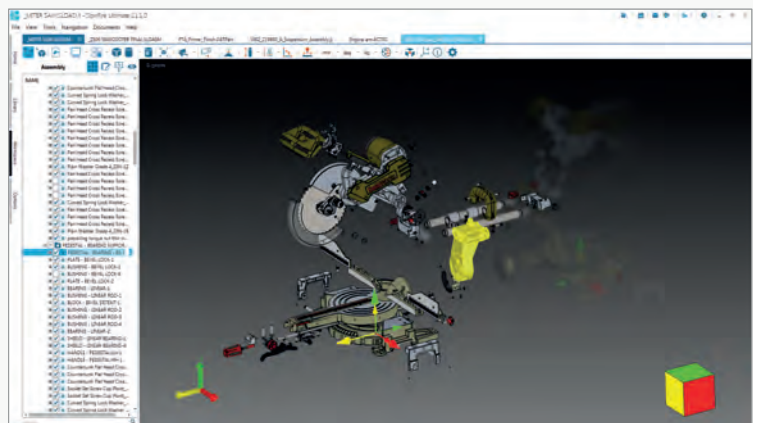


CAD conversion



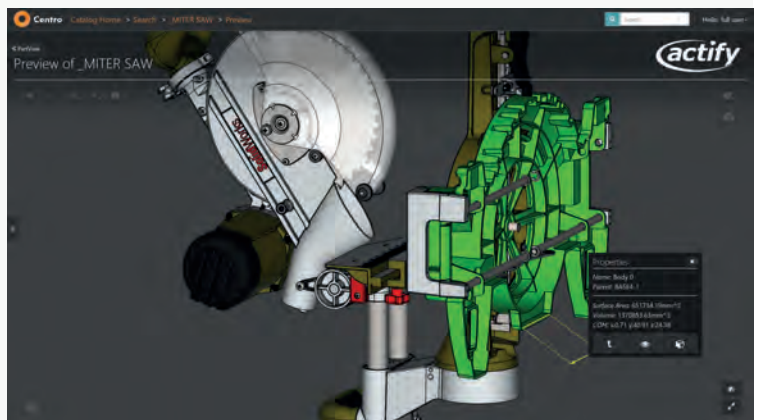
CAD dimensioning

**SpinFire Ultimate** is an industry-leading application and Actify's flagship CAD viewer. It's a powerful desktop application with multi-CAD support for 3D and 2D viewing, measuring, mark-up and other investigative functions. SpinFire is able to convert CAD data into a compact and neutral format for sharing with internal and external teams.



**SpinFire Web** is Actify's zero download, lightweight CAD viewer. It's a user-friendly CAD tool that can be accessed by any web-enabled device. (mobile, tablet and desktop).

We've integrated SpinFire Web into our Centro solution and various business tools. SpinFire Web comes with a SDK (Solution Developer Kit), so it can be integrated with a number of client applications. We've helped a number of customers integrate SpinFire Web with their in-house PDM and ERP applications.





# Overcome the information discovery challenge

Today employees are looking for easy and fast ways to share information and complete their work. Shadow IT represents the unknown applications and facilities that enterprise workers use to meet their data exchange needs: USB devices, mobile devices, email, and online file transfer services. If you don't provide an effective platform to manage enterprise data within your organization, you're at risk of employees connecting and sharing through unmanaged networks outside of the organization.

Actify provides a powerful platform for discrete manufacturers to deliver a centralized and unified view of product data for effective project management that's both secure and easy to use while overcoming the challenge of multi-site or multi-region access to data.

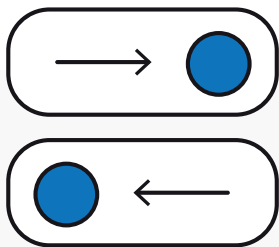
## Enterprise Information Management

Data Management needs to consider more than just data creation and data storage. The success of your organization will be defined by the way business data is transformed into usable knowledge to create value. Therefore, data and file management can be a dynamic and transformational topic. Unfortunately, many companies rely on aging line-of-business systems and legacy infrastructure which prohibits their ability to move at the speed of the Internet.

At a time when data is considered a business asset, traditional data management approaches will not add value but will generate additional costs. Actify realize that manufacturing companies have enormous and often untapped potential. We help by exposing the valuable product data which is hidden and unused within various systems.

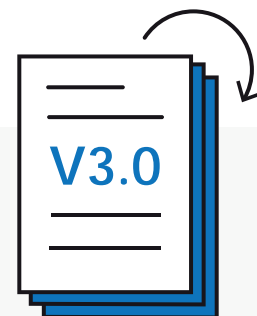
**Actify collates enterprise data to enable cross-department collaboration, data management and quick access to all available product data to help make critical business decisions faster.**

Actify's neutral platform best supports the needs and connects the data from different disciplines to effectively communicate, share information and securely collaborate regardless what file type or line of business system you typically use. One of the biggest benefits is that you can effectively collaborate on project data with team members, regardless of geographical location. Eliminate concerns over version control and data loss. Through robust features, such as data governance, check in and check out, Actify can manage revisions of all your enterprise files, not just CAD.



### Check-in/check-out for all file types

File check-in check-out works across all file types and ensures no work is lost when team members collaborate. Each file iteration is captured along with amendment comments and a note of the user who performed the edit. Change history is stored and previous versions of the file remain accessible should there be the need to retrieve an earlier version.



### Version control

Actify can accurately handle revisions and automate file versioning. Capture notes with each version, record the type of changes made and any other useful information that can build an effective revision history audit. Version control saves you the tedious job of manually naming each updated version of a file to reduce human error.

# Replace your static excel spreadsheet with a dedicated business tool

Many of today's manufacturing companies store their data in line-of-business systems like PLM and ERP. Today people must go to each of those data sources to extract what they need, then join the dots between all the information so they can get an accurate picture. Typically, manual data collection, meetings and regular reporting are the methods most companies use to extract information from their enterprise workers or line-of-business systems. We observe a high-volume of static excel spreadsheets being copied and passed around the company as the primary means of communicating data.

## Actify's Business Tools

Actify's business tools are configurable. Business tool functionality and phases are customizable to support your organization's nomenclature and processes, whilst adhering to industry standards. Data values are persistent across Actify's business tools, supporting a single version of the truth, removing duplicate data entry and human error.

Actify's business tools can be configured to replicate your company's excel driven process; this ensures you can retain your organization's unique competitive advantage—the process. Minimize process change and gain all the benefits of modern software. A single version of data, accessible anywhere, change audit, store and access previous versions and compare changes between revisions.

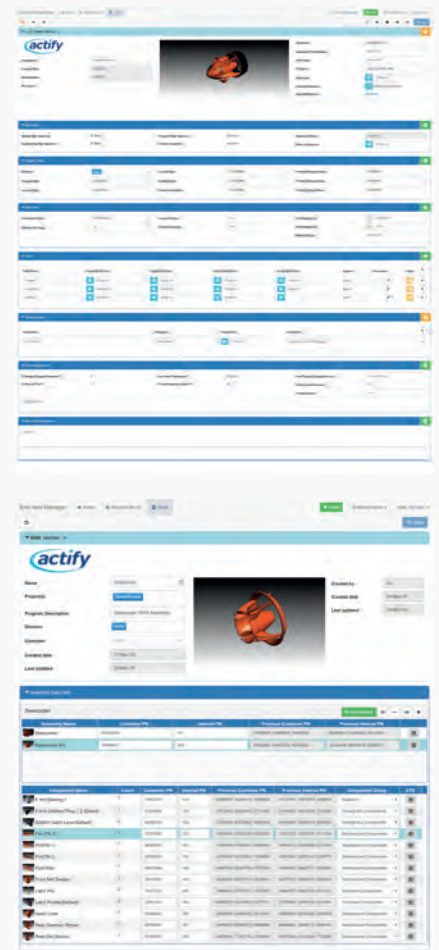
Actify's business tools can make data entry more efficient. Simple and intuitive data filtering, such as assigning resources from drop-down menus and date pickers, will ensure that human error is not a barrier to your organization's operational agility. When business tools are equipped with knowledge of your enterprise, filtering by location will display only the machines and resources available at that facility.

## Job Sheet Manager

The Job Sheet Manager collates information pertaining to a manufacturing project. This business tool auto-populates with available information aggregated from multiple data sources, such as production, sales and design systems. Users can be assigned to specific roles and responsibilities. Create project milestones, key deliverables and assign target delivery dates. Use the application to capture project issues. All projects can be rolled up to a high-level overview to identify pressure points across all programs within the organization.

## End Item Manager

The End Item Manager supports product variation across a product line. Multiple assemblies can be constructed and added to the application. Sometimes referred to as the 150% model. This business tool manages the extensive Bill of Materials which accommodates all possible product variation within one product line. The application will manage product revisions and catalog part number changes across development and the product life cycle. Users can observe the quantity needed for each component by selecting the desired product variant. Once you determine which components are to be manufactured or purchased, the application will automatically create a Component Technical Detail sheet for manufactured components. Since the application auto-populates much of the component technical detail sheet with collated information from connected data sources, significant time is saved.



# Actify Business Tools

## ERP Uploader

**Process Routing:** In many ERP systems the act of defining the process routing for a component or assembly can be complex and tedious. This business tool gives the user a simple interface that allows the import and editing of routing instructions before being pushed to the ERP system.

**Bill of Materials Push:** This solution manages the process of moving engineering data seamlessly from design system to ERP system without the need for manual intervention. Significant time savings are achieved, no more repetitive data entry and risk of human error is eliminated as data is transferred between systems.

## Quoting Manager

Quoting has become a labor-intensive manual process with endless part numbers and many iterations between sales and engineering. The Quoting Manager enables users to quickly and consistently produce quotes. The application can be configured to support a client's established manufacturing and quoting process. The tool contains business rules and intuitive data filtering to eliminate human error and prevent users from creating non-viable quotes. Search for legacy quotes and project information by metadata and geometric shape indices. Deploying such a tool will immediately enable greater throughput, faster response to sales opportunities, enhance the buying experience, while ensuring that only profitable quotes are put in front of customers.

**APQP Manager** - Advanced Product Quality Planning  
APQP is a quality framework used to develop products. The purpose of APQP is to produce a product quality plan to support the development of a product or service to satisfy customers. The APQP business tool augments the client's existing quality process and captures information directly from CAD to auto-populate the application with available information. Monitor progress, attach relevant documents to each stage, capture sign-off and email notifications when milestone or phase gates are achieved. The APQP business tool provides a complete record of all quality measurements and relevant certifying documents as a proof of record.

**PPAP Manager** - Production Part Approval Process  
PPAP is used in the automotive supply chain for establishing confidence in suppliers and their production processes. The PPAP business tool demonstrates that a client's engineering design record and specification requirements are properly understood by the supplier and that the supplier's design and production process can consistently meet the client's requirements, minimizing the risk of failure. Users can be assigned to specific roles and responsibilities. Create project milestones, key deliverables and assign target delivery dates.





# Gain greater control of your product information

The success of your organization will not be achieved through the creation and collection of data. Success will be defined by the way business data is transformed into usable business knowledge to create value. Actify realize that manufacturing companies have enormous, and often untapped, potential which is hidden and unused within various business systems.

Many companies are implementing digital strategies to achieve their operational goals of becoming better, faster, and cheaper.

## About Actify

We create software solutions to solve business problems. We work closely with our customers to provide a tailored, process-centric, end-to-end solution. We enable and bring value to every engineering change, project update and data exchange across the enterprise and extended supply chain.

Through technology, we help manufacturers unlock the power of their data. We amplify underlying business processes, making them smarter, better and faster, and ensure companies don't lose themselves in the pursuit of digital transformation.

We see tremendous value that is currently hidden and unused within various business systems or inaccessible because of proprietary file formats. Manufacturers have business systems and databases that they've been populating for many years. Actify delivers the technology to unlock and leverage this data opportunity to benefit our customers.

What drives Actify as a company is a desire to complement and accelerate our customers business performance without sacrificing their core competencies, or their identity.



[www.actify.com](http://www.actify.com)

## United States

101 California St, Suite #2710  
San Francisco, CA 94111  
Phone: 415-227-3800  
Email: [sales@actify.com](mailto:sales@actify.com)

## Germany

Actify Europe GmbH  
Otto-Hahn-Strasse 13b  
85521 Riemerling  
Phone: +49 89-4161511-0  
Fax: +49 89-4161511-99  
Email: [saleseurope@actify.com](mailto:saleseurope@actify.com)

## United Kingdom

Actify Europe Ltd  
14-18 Hill Street  
Edinburgh, EH2 3JZ  
Phone: +44 1455 635522  
Email: [enquiries@actify.com](mailto:enquiries@actify.com)