

# JT24 HORIZONTAL DIRECTIONAL DRILL



**TRENCHLESS**



# JT24 HORIZONTAL DIRECTIONAL DRILL

Bigger thinking brought down to size.



The evolution of HDD continues with the Ditch Witch® JT24 Directional Drill. Giving you the power and footprint to be the ultimate uptime champ.

Engineered from direct customer feedback, this drill is ideal for urban and residential utility, gas and fiber jobs. Boasting more power in a compact footprint, the JT24 provides 101-gross-hp, 3,000 ft-lbs of torque and 24,000 lbs of thrust and pullback at a size that easily fits in tight jobsites. Plus, its low center of gravity gives operators more stability than competitive units so you can work with confidence.

**WE'RE IN THIS TOGETHER.**



1 Hydraulic platform uses leading technology to deliver more horsepower where it matters most—downhole.

2 101-hp, Tier 4 and EU Stage V-compliant Cummins® diesel engine for greater power in a compact unit.

3 Two, seven-inch LED screens provide better insight into all machine functions.

7 The JT24 offers best-in-class stability without compromising footprint so operators can maneuver in urban jobsites with confidence.\*

6 40-gpm, 1,200-psi mud pump offers increased fluid course from the mud pump to the swivel, funneling extra horsepower to the bit downhole.

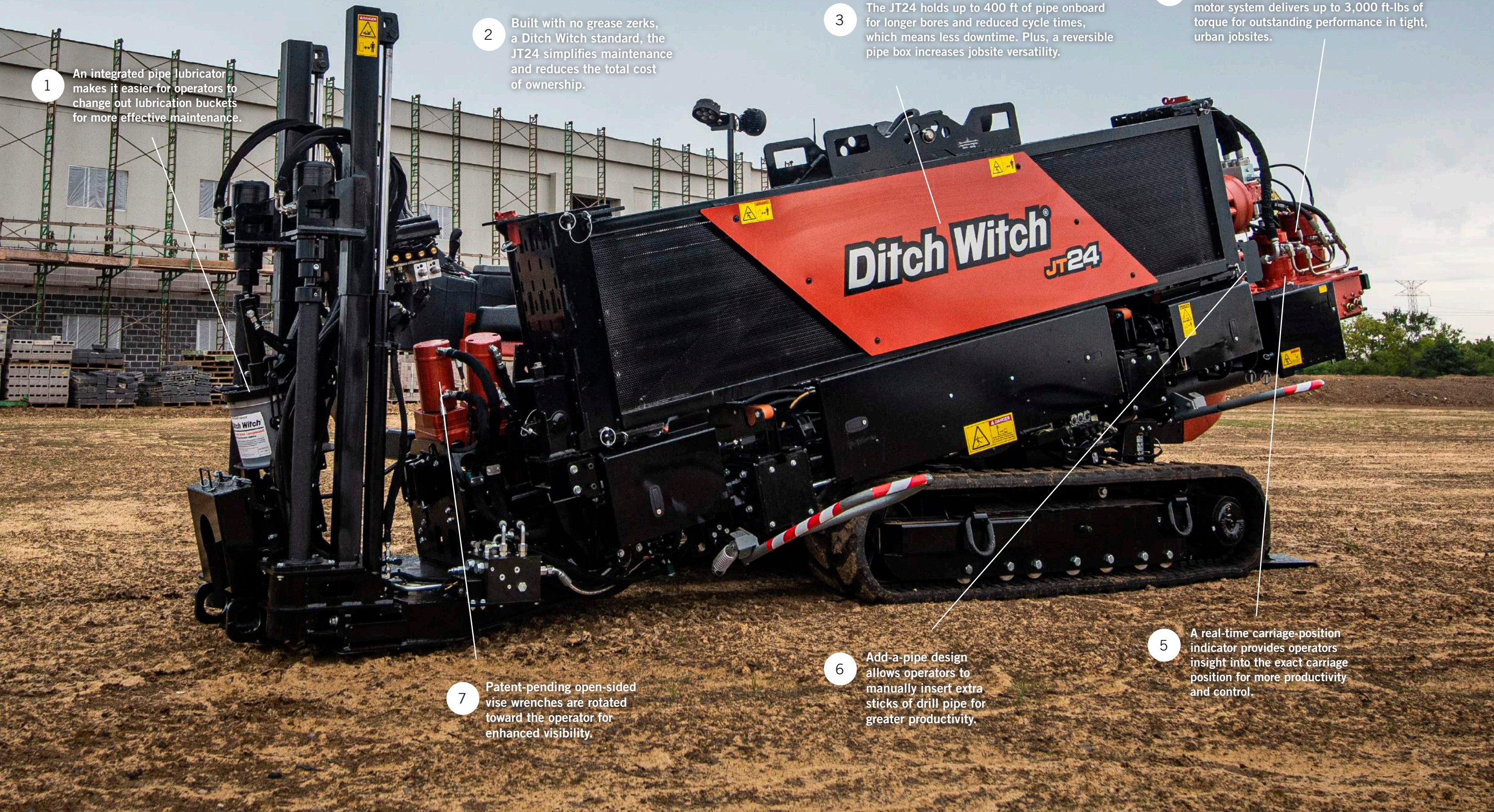
5 Fold-out, lift-off doors make it easier for operators to conduct machine maintenance.

4 The JT24 is equipped with radial operator control (ROC) to highlight the multifunctional controller on the machine display for better controllability.





# JT24 HORIZONTAL DIRECTIONAL DRILL



1 An integrated pipe lubricator makes it easier for operators to change out lubrication buckets for more effective maintenance.

2 Built with no grease zerks, a Ditch Witch standard, the JT24 simplifies maintenance and reduces the total cost of ownership.

3 The JT24 holds up to 400 ft of pipe onboard for longer bores and reduced cycle times, which means less downtime. Plus, a reversible pipe box increases jobsite versatility.

4 Dual-thrust motors provide 24,000 lbs of thrust and pullback while an exclusive single-motor system delivers up to 3,000 ft-lbs of torque for outstanding performance in tight, urban jobsites.

7 Patent-pending open-sided vise wrenches are rotated toward the operator for enhanced visibility.

6 Add-a-pipe design allows operators to manually insert extra sticks of drill pipe for greater productivity.

5 A real-time carriage-position indicator provides operators insight into the exact carriage position for more productivity and control.



# ENGINEERED FOR THE JOBSITE. AND THE OPERATORS.



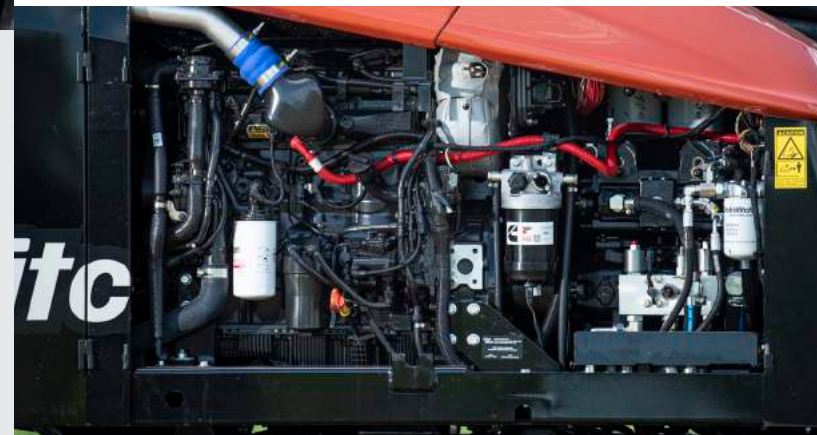
Productive jobs start with productive crews. Which is why the JT24 was engineered with the comfort, technology and industry-leading visibility to keep you successful. It features:

- A wider frame, giving the JT24 more stability than any drill in its class, so operators can maneuver in urban jobsites with confidence.\*
- A simple, field-proven pipe-loading system.
- Two, seven-inch LED screens for better insight into all machine functions.
- A real-time carriage-position indicator giving operators insights into exact carriage position for more productivity.
- Radial operator control (ROC) for improved control and efficiency.

## JT24 HORIZONTAL DIRECTIONAL DRILL SPECIFICATIONS

	U.S.	METRIC
<b>OPERATION</b>		
Spindle speed, max	225 rpm	225 rpm
Spindle torque, max	3,000 ft-lb	4,076 N-m
Carriage thrust travel speed	210 fpm	64 m/min
Carriage pullback travel speed	216 fpm	66 m/min
Thrust force	24,000 lb	107 kN
Pullback force	24,000 lb	107 kN
Ground travel speed		
Forward	2.8 mph	4.5 km/h
Reverse	2.8 mph	4.5 km/h
<b>POWER</b>		
Engine	Cummins® F3.8	
Fuel	Diesel	
Cooling medium	Liquid	
Injection	Direct	
Aspiration	Turbocharged & charge air cooled	
Number of cylinders	4	
Displacement	231.89 in <sup>3</sup>	3.8 L
Bore	4.02 in	102 mm
Stroke	4.53 in	115 mm
Gross horsepower Tier 3/Tier 4	101 hp	
Rated speed Tier 3/Tier 4	2,200 rpm	
Emissions compliance Tier 3	EPA Tier 3	EU Stage IIIA
Emissions compliance Tier 4	EPA Tier 4	EU Stage V
<b>DIMENSIONS</b>		
Transport length	224.5 in	5.7 m
Width	65.25 in	1.66 m
Transport height	83 in	2.11 m
Weight	14,850 lb	6736 kg
Ground clearance	5.8 in	147 mm
Entry angle	18°	18°
Entry angle, tracks on ground	12°	12°

	U.S.	METRIC
<b>DRILLING FLUID SYSTEM (ONBOARD)</b>		
Pressure, max	1,200 psi	83 bar
Flow, max	40 gpm	189 L/min
<b>FLUID CAPACITIES</b>		
Fuel tank	32 gal	121 L
Engine lubrication oil w/filter	15.4 qt	14.6 L
Hydraulic reservoir	18.75 gal	71 L
Engine cooling system	20 qt	18.9 L
Antifreeze tank	5 gal	18.9 L
Diesel exhaust fluid tank	5 gal	18.9 L
<b>POWER PIPE® HD</b>		
Length	120 in	3.05 m
Joint diameter	2.625 in	66.7 mm
Pipe diameter	2.25 in	57.15 mm
Bend radius, min	117 ft	35.66 m
Weight of drill pipe, lined	72.5 lb	32.89 kg
Weight of lined drill pipe & large box (40 pipe)	3,555 lb	1612.5 kg
Weight of lined drill pipe & small box (28 pipe)	2,675 lb	1213 kg
<b>POWER PIPE FORGED</b>		
Length	120 in	3.05 m
Joint diameter	2.63 in	66.7 mm
Pipe diameter	2.375 in	63.5 mm
Bend radius, min	123 ft	35 m
Weight per drill pipe	74 lb	33.5 kg
Weight w/drill pipe & large box (40 pipe)	3,635 lb	1649 kg
Weight w/drill pipe & small box (28 pipe)	2,720 lb	1234 kg
<b>BATTERY (2 USED)</b>		
SAE reserve capacity rating	110 min	
SAE cold crank rating @ 0°F (-18°C)	800 amps	
<b>NOISE LEVEL</b>		
Operator sound	83 dBA	
Exterior sound power	101 dBA	



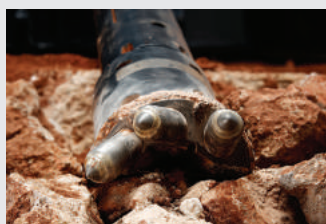
Specifications are general and subject to change without notice. If exact measurements are required, equipment should be weighed and measured. Due to selected options, delivered equipment may not necessarily match that shown.

\*Stability claim based on lab test of competitive equipment.





## THE DITCH WITCH® HDD SYSTEM INCLUDES:



### HDD TOOLING

For your directional drill, we offer a complete line of genuine Ditch Witch drill bits, HD backreamers, drill pipe, and beacon housings, the most reliable and durable in the horizontal directional drilling industry.



### MUD MIXERS

Ditch Witch fluid-management systems include the innovative FM5X or FM13X, a fluid-mixing system that features a pump that lubricates itself during mixing and works so efficiently that it delivers 20 percent more fluid than other models.



### VACUUM EXCAVATORS

Featuring an innovative, low-profile design that doesn't sacrifice power or ground clearance, our hydro excavation line of vacs delivers unrivaled versatility and performance.



### TRAINING

Your Ditch Witch HDD system comes with more than just equipment. It comes with the training to keep your crews confident and efficient, with courses online, in-the-classroom and even on-the-job from certified industry pros.

