



The Kingsbury Modular CP Toilet

The perfect facility for those looking to combine new male and female w/c facilities, with a fully compliant Changing Places toilet.

The Kingsbury provides over 31sqm of internal floorspace, with a minimum internal ceiling height of 2.4m and premium equipment throughout. This multifunctional, hygienic environment incorporates a BS 8300 compliant Changing Place, male and female w/c and a functional plant room.

Aesthetics can be tailored both inside and out. The external shell can be clad in materials to compliment your existing buildings or environment, plus we provide a wide range of internal colours and finishes.

The Kingsbury Changing Place is delivered and lifted into position on-site as a complete unit. This minimises disruption to any existing buildings, whilst accelerating build times and improving quality control.

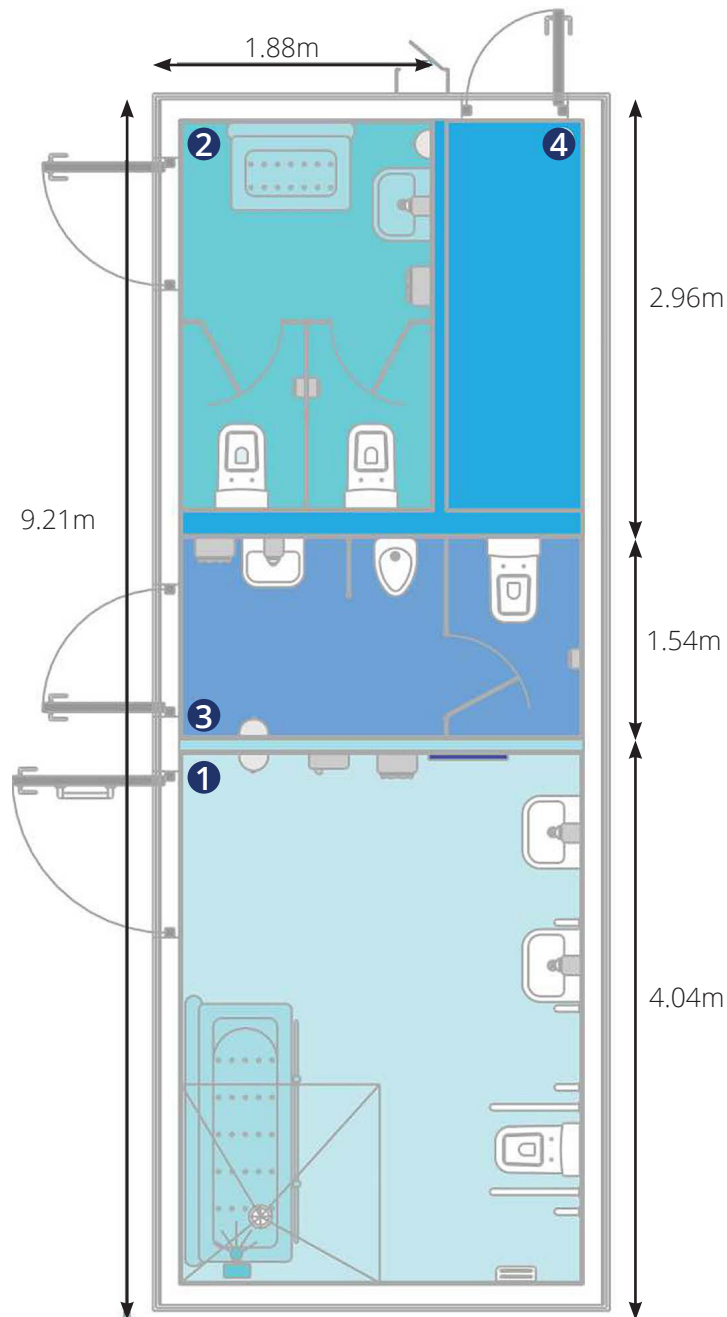


The Kingsbury

Product Specifications

Inside

Manually operated hand dryer
 Waste disposal bin
 Height adjustable washbasin
 Paper towel dispenser
 Full length mirror
 Large sanitary disposal bin
 Peninsular toilet
 Alarm reset button
 Vertical grab rails
 Drop-down support arms
 Toilet roll holder
 Flat topped close coupled cistern
 Alarm pull cord
 OT200 Ceiling Hoist System
 Retractable privacy screen
 Height adjustable changing table
 Floor drain
 Shower unit
 Wide paper roll dispenser
 Sanitary towel dispenser
 Coat Hooks
 Wash basin standard height
 Wash basin for wheelchair users



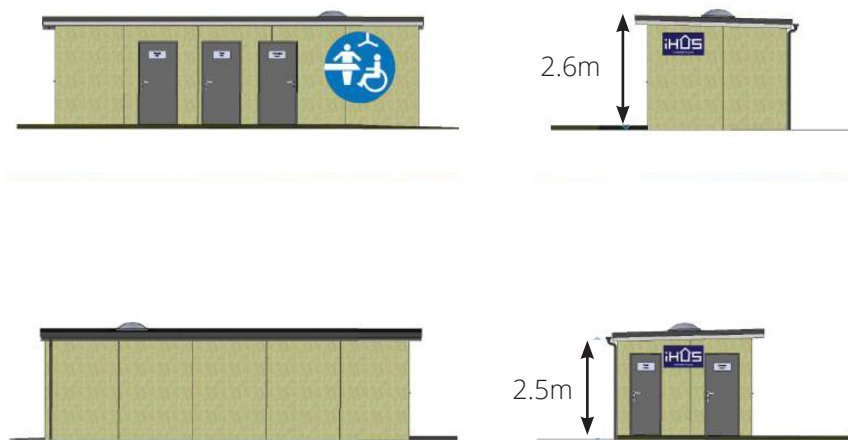
1 Fully BS 8300 compliant Changing Place facility incorporating all of the necessary equipment.

2 Male WC - Including one enclosure, waterless urinal, hand basin, intelligent heating and accessories.

3 Female WC - Including two WC enclosures, hand basin, baby changing bench, intelligent heating and accessories.

4 Plant Room - This room offers additional storage and houses all the facilities mechanical equipment.

Elevations



Clockhouse, Dogflud Way, Farnham, Surrey, United Kingdom, GU9 7UD
 T: +44 (0)1252 758858 F: +44 (0)870 1619681 E: info@opemed.net
www.opemed.net