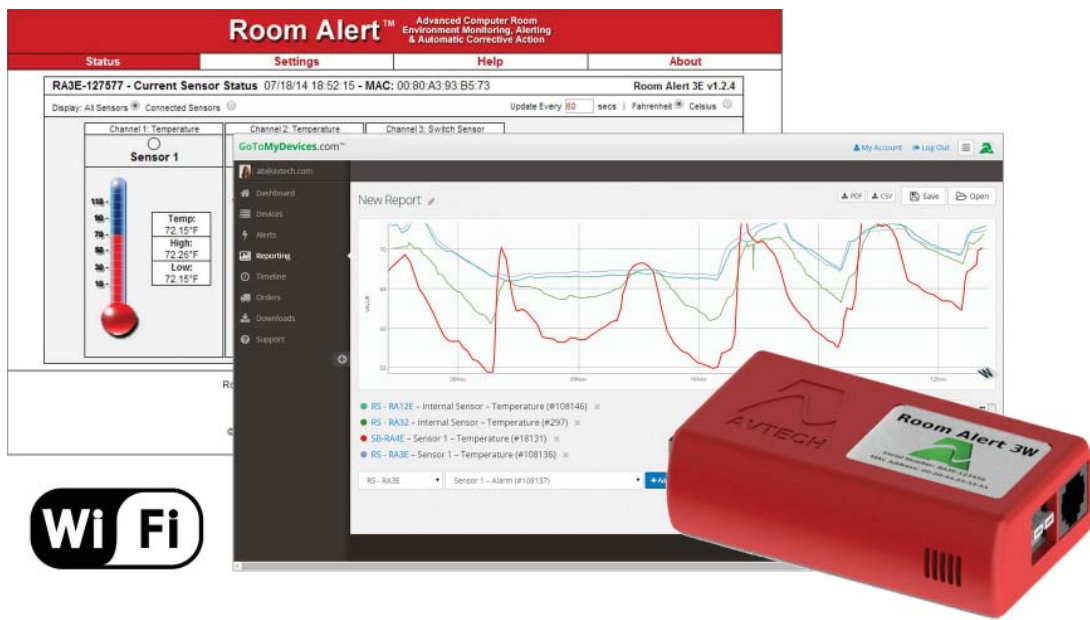


# Room Alert<sup>®</sup> 3

Temperature & Environment Monitoring... *Made Easy!*



Phone **401.628.1600**  
Fax **401.628.1601**  
Web **AVTECH.com**

**User's Guide &  
Reference Manual**

# Protect Your Facility...

*Don't Wait Until It's Too Late!*<sup>™</sup>



## Install Room Alert® Monitors

The Most Advanced, Easy-To-Use, Reliable & Affordable Monitors Available To...

**MONITOR, ALERT... LOG, GRAPH... VIEW, REPORT... MANAGE, PROTECT...**

- Digital Temperature
- Digital Outdoor Temperature
- Digital Fluid Temperature
- Digital Humidity
- Main / UPS Power
- Flood / Water
- Current Loops (Amperage)
- Extreme Temperature
- Heat Index (Feels Like)
- Smoke / Fire
- Fuel / Water Tank Level
- Air Flow, Sound, Light
- Motion, Room Entry
- Panic Button, Security
- Light Towers, Relay Switches
- Wireless Sensor Hubs
- Network Cameras
- Analog Power & Temp Sensors
- Switch Sensors
- Dry Contacts
- Low Voltage Sensors

**On behalf of the entire team at AVTECH,  
we say, “Thank You!” It is our privilege to  
serve you, our valued customer.**

## Copyright Information

© Copyright 1988-2015 AVTECH Software Inc.

All Rights Reserved. No part of this book may be used or reproduced for commercial benefit in any form or by any means, or stored in a database or retrieval system, without prior written permission of AVTECH Software Inc., except in the case of brief quotations embodied in articles and reviews. Making copies of any part of this book for any purpose other than your individual use is a violation of United States copyright laws and international treaty provisions. For information or additional copies, contact AVTECH Software Inc., as directed below. Printed in the United States of America.

## Warning and Disclaimer

This publication is shipped as is, without warranty of any kind, either express or implied. While every precaution has been taken in the preparation of this publication, the publisher and authors assume no responsibility for errors or omissions. Neither is any liability assumed for damages resulting from the use of the information or instructions contained herein. It is further stated that the publisher and authors are not responsible for any damage or loss to your data or equipment that may result directly or indirectly from your use of this publication and the related hardware & software. Nothing on any AVTECH web site or in documentation shall be construed as conferring any license under any of the AVTECH Software (AVTECH) or any third party's intellectual property rights, whether by estoppel, implication, or otherwise.

## Trademark Acknowledgements

AlertScript, AVTECH, the AVTECH Logo, AVTECH Software, the AVTECH System Manager Character, AVTECH.com, AVTECHSoftware.com, Environment Alarm, "Environment Monitoring Made Easy!", EnvironmentMonitor.com, "GoToMyDevices.com", "IT Environment Monitoring Made Easy!", MUPS, Device Discovery, Device Manager, "Protect Your Facility... Don't Wait Until It's Too Late!", "Protect Your IT Environment... Don't Wait Until It's Too Late!", Room Alert, Room Alert Signal Tower, Signal Tower, RoomAlert.com, TemPageR, TemPageR.com and "Temperature Monitoring Made Easy!", WiSH, and WiSPR, are trademarks or registered trademarks of AVTECH Software Inc. Any other trademarks, product or company names mentioned herein are the property of their respective owners and used strictly for the purpose of identifying compatibility. AVTECH Software Inc. cannot attest to the accuracy of any other organization's ownership claim to a trademark and use of any trademark in this publication should not be regarded as affecting the validity of any trademark or service mark.

## Special Thanks

We would like to recognize field test participants, our inhouse support staff and the entire software & hardware development teams for their contributions and assistance in completing this manual.

## Sales, Support & Contact Information

To receive further information or assistance regarding this publication, or any AVTECH product or service, please contact:

<b>Headquarters</b>	<b>AVTECH Software Inc.</b> 16 Cutler Street, Cutler Mill Warren, RI 02885-2761 USA	<b>Email</b>	Sales@AVTECH.com Support@AVTECH.com Info@AVTECH.com
<b>Phone</b>	<b>401.628.1600</b>	<b>Web</b>	<b>AVTECH.com</b> EnvironmentMonitor.com GoToMyDevices.com RoomAlert.com
<b>Sales</b>	888.220.6700		
<b>Fax</b>	401.628.1601		



## Table of Contents

Introduction To Room Alert 3 Wi-Fi.....	2
Room Alert 3 Wi-Fi Package Contents .....	3
The Room Alert 3 Wi-Fi ID Box .....	3
Front.....	3
Back .....	4
How To Install Your Room Alert 3 Wi-Fi.....	5
Step 1: Connect Your Room Alert 3 Wi-Fi To A Power Source.....	5
Step 2: Configure Your Room Alert 3 Wi-Fi’s Network Settings.....	5
A. Connect To The Room Alert’s Wireless Access Point.....	5
B. Open The Room Alert 3 Wi-Fi’s Web Interface .....	6
C. Connect The Room Alert 3 Wi-Fi To Your Wireless Network.....	8
D. Disconnect From Your Room Alert 3 Wi-Fi’s Wireless Access Point .....	10
Step 3: Connect Additional Components.....	10
Step 4: Configure Alerts In Your GoToMyDevices Account .....	11
How To Use Room Alert 3 Wi-Fi’s Web Interface.....	12
Status.....	12
Current Sensor Status Bar .....	13
Sensor Display Area .....	14
Settings.....	15
QuickConnect .....	15
Status.....	15
Network.....	16
Users .....	18
WLAN Profiles .....	19
Introduction To AVTECH’s Device Manager .....	20

## Introduction To Room Alert 3 Wi-Fi

The Room Alert 3 Wi-Fi monitor is AVTECH's compact and economical hardware solution for *Temperature & Facilities Environment Monitoring... Made Easy.*

At 3 5/8" L x 1 3/4" W x 7/8" H and a mere 2 ounces, the Room Alert 3 Wi-Fi is small and light enough to mount nearly anywhere; it can be installed in areas without a standard Ethernet connection; and it's jam-packed with AVTECH's latest technology, so it's smart and powerful enough to monitor up to three (3) sensors: one (1) internal, one (1) external digital and one (1) external switch.



### Install your unit with minimal planning and less hassle.

- ✓ Get up and running in minutes with easy “Plug and Play” setup.
- ✓ Easily mount Room Alert 3 Wi-Fi—hang it from a nail and you’re good to go!
- ✓ Monitor areas without a standard Ethernet connection with the built-in Wi-Fi.

### Get access from anywhere over the web.

- ✓ Quickly configure Room Alert 3 Wi-Fi to use your Wi-Fi network with its easy-to-use built-in web interface.
- ✓ Monitor Room Alert 3 Wi-Fi from GoToMyDevices.com, AVTECH's state-of-the-art cloud monitoring service.
- ✓ Significantly expand its functionality with AVTECH's Device Manager, the powerful software bundled FREE with all Room Alert monitors.

### Know immediately when physical conditions change.

- ✓ Set alert thresholds for the built-in temperature sensor from -40° to 185° F (-40° to 85° C).
- ✓ Alert multiple contacts on your team when thresholds are exceeded.
- ✓ Receive alert notifications by email, email-to-SMS and more on your computer or mobile phone.

### Expand your options as your needs evolve.

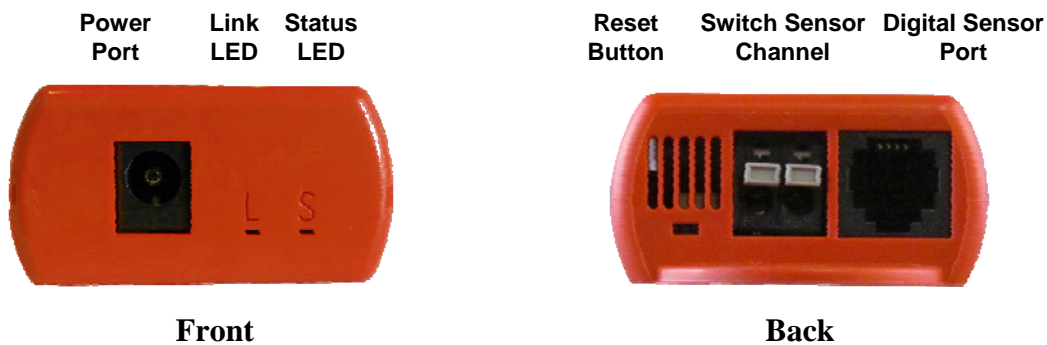
- ✓ Extend your reach by adding an external digital sensor up to 100 feet away and an external switch sensor up to 900!
- ✓ Explore your options further with your AVTECH Product Specialist.

## Room Alert 3 Wi-Fi Package Contents

The standard Room Alert 3 Wi-Fi package includes:

- One (1) Room Alert 3 Wi-Fi ID Box
- One (1) *Room Alert 3 Wi-Fi User's Guide & Reference Manual* (You're reading it now.)
- One (1) Package Of Literature & Additional Information

### The Room Alert 3 Wi-Fi ID Box



#### Front

#### Power Port



A standard power port connects Room Alert 3 Wi-Fi to an electrical outlet with AVTECH's International Power Adapter.



Look for the AVTECH logo. Using another power adapter could damage the Room Alert 3 Wi-Fi's circuit board. If you need one, purchase it online at [AVTECH.com](http://AVTECH.com). AVTECH has an international power adapter with a compatible plug style for each and every country.

## Room Alert 3 Wi-Fi

### LEDs



Two (2) LEDs display the Link (“L”) state or Status (“S”) of Room Alert 3 Wi-Fi.

- “L” (on the left) lights solidly when the unit is connected to your wireless network.
- “S” (on the right) blinks once when you plug the unit into power. Otherwise, it is unlit.

### Back

#### Reset Button



A small push button resets Room Alert 3 Wi-Fi to factory default settings.

#### Switch Sensor Channel



A pair of dry contacts connects Room Alert 3 Wi-Fi to any AVTECH switch sensor or dry contact on a device (e.g., HVAC, generator, pump, fan, etc.) via standard speaker wire or low-voltage 2-wire cable.

#### Digital Sensor Port



A standard RJ-11 jack connects any AVTECH digital sensor to your Room Alert 3 Wi-Fi via a standard RJ-11 (straight through) telephone cord.

### NOTE



For more information about AVTECH sensors and accessories, please refer to the [Appendix](#) at the back of this manual or visit the [Sensors and Accessories](#) sections of [AVTECH.com](http://AVTECH.com).



## How To Install Your Room Alert 3 Wi-Fi

### Step 1: Connect Your Room Alert 3 Wi-Fi To A Power Source

- Plug one end of AVTECH’s International Power Adapter into the Room Alert 3 Wi-Fi’s power port.
- Plug the other end into a surge-protected power source. Notice that the “S” LED (on the right) blinks once when the Room Alert 3 Wi-Fi is first connected to power.

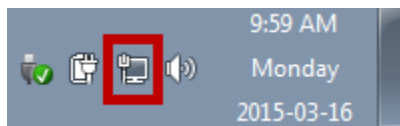


Use only AVTECH’s International Power Adapter. Others could damage the Room Alert 3 Wi-Fi and void your warranty. If you don’t have one, please visit our online store at [AVTECH.com](http://AVTECH.com).

### Step 2: Configure Your Room Alert 3 Wi-Fi’s Network Settings

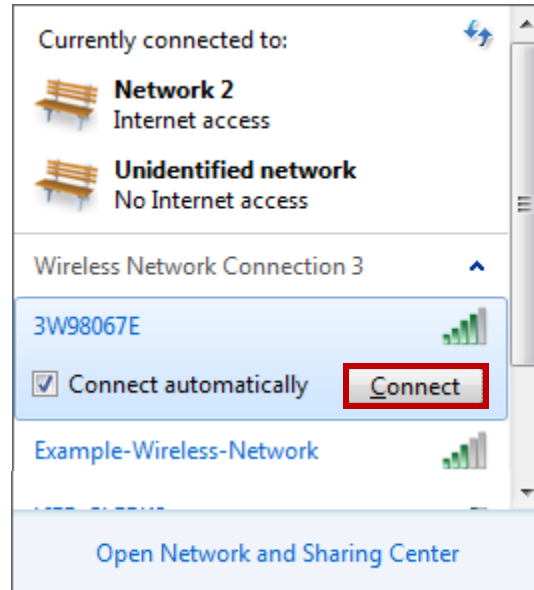
#### A. Connect To The Room Alert’s Wireless Access Point

- In your Windows task bar, select your **Network Connection Status Icon**  to open the list of your networks.



- You’ll see the Room Alert 3 Wi-Fi listed as an available wireless network. Its name (also known as its SSID) will be in this format: 3WXXXXXX.
- Select that name, and then select **Connect**.

## Room Alert 3 Wi-Fi



This will automatically disconnect your computer from your normal wireless network. You'll reconnect to it later in this process.

- When you're asked for the Room Alert 3 Wi-Fi's network security key, enter the following key, which is case-sensitive:

**RoomAlert3W**

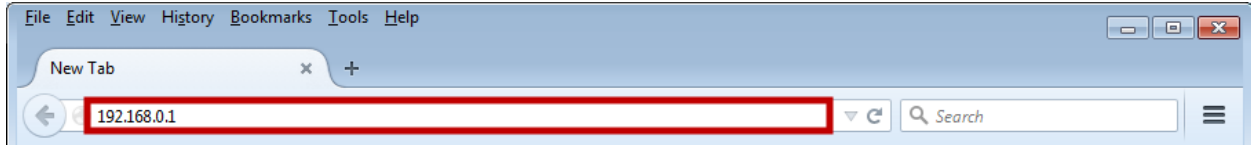
- Then select **OK**.



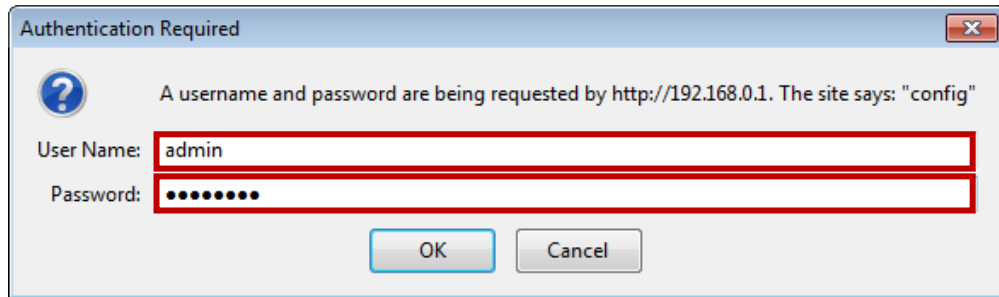
### B. Open The Room Alert 3 Wi-Fi's Web Interface

- Open a web browser, and enter the Room Alert 3 Wi-Fi's default web interface address (it's "soft AP") in the address bar:

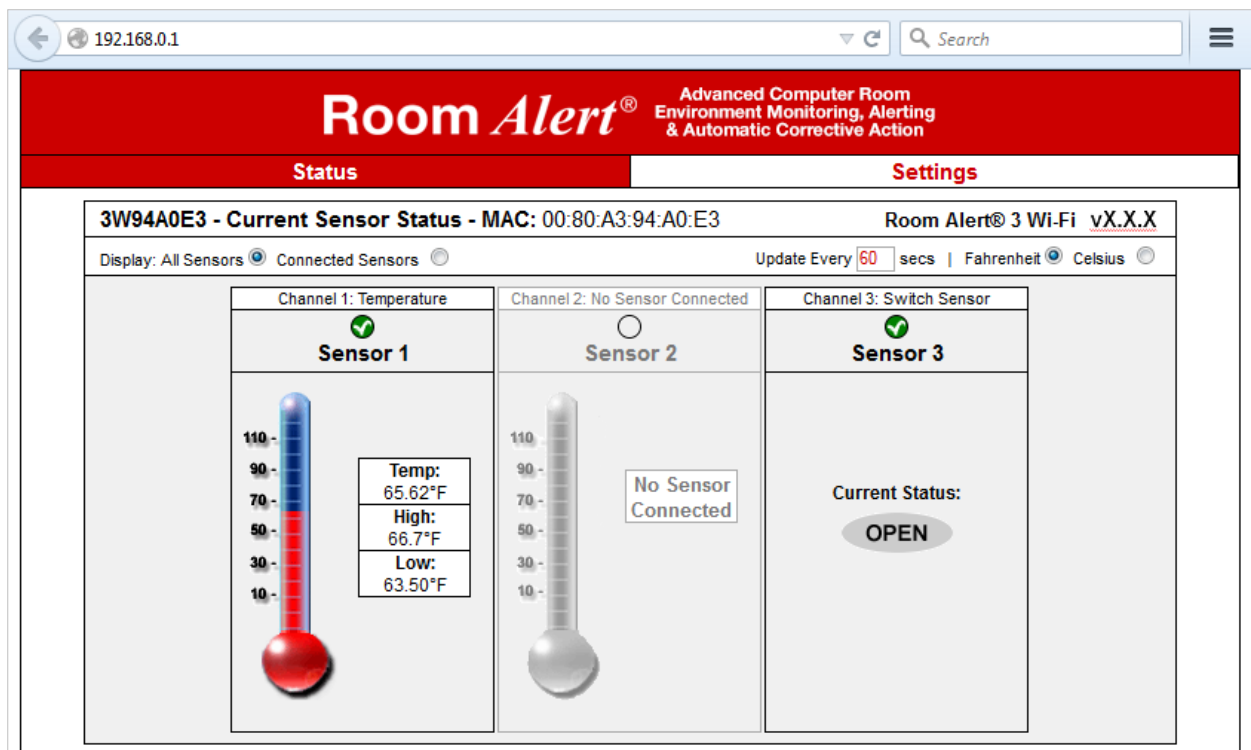
**192.168.0.1**



- When you are asked for login credentials, enter the Room Alert 3 Wi-Fi's default username and password:
  - **Username:** admin
  - **Password:** PASSWORD



- The Room Alert 3 Wi-Fi's interface will now open to the Status page at its "soft AP":



### C. Connect The Room Alert 3 Wi-Fi To Your Wireless Network

Once you are in the Room Alert 3 Wi-Fi's interface, navigate to **Settings**→**QuickConnect** in order to configure the device to use your wireless network.

- In “Network Name,” select your Wifi network’s network name (also called its SSID) from the list of networks.

In this example, we are choosing “Example-Wireless-Network.”

Status		Settings													
<b>QuickConnect</b>	WLAN Link Scan														
Status	Network name: <input type="text"/>				Scan										
Network	<table border="1"><thead><tr><th>Network Name</th><th>BSSID</th><th>Ch</th><th>RSSI</th><th>Security Suite</th></tr></thead><tbody><tr><td>Example-Wireless-Network</td><td>00:1E:2A:DB:87:D0</td><td>6</td><td>█ █ █ █ █ -42 dBm</td><td>WPA2-CCMP-TKIP</td></tr></tbody></table>					Network Name	BSSID	Ch	RSSI	Security Suite	Example-Wireless-Network	00:1E:2A:DB:87:D0	6	█ █ █ █ █ -42 dBm	WPA2-CCMP-TKIP
Network Name	BSSID	Ch	RSSI	Security Suite											
Example-Wireless-Network	00:1E:2A:DB:87:D0	6	█ █ █ █ █ -42 dBm	WPA2-CCMP-TKIP											
Users															
WLAN Profiles															



If your wireless network’s name is hidden, type it (with correct capitalization) in the “Network name” field shown above; then select it when it appears in the list.

- A “WLAN Profile” for your network will automatically appear. Options on this menu vary depending your Wi-Fi network’s security.
  - If you are required to, enter your Wi-Fi network’s password in the Password field.
  - Select **Apply** to temporarily save your changes.

Status		Settings	
<b>QuickConnect</b>	WLAN Profile "Example-Wireless-Network"		
Status	Connect To		
Network	Network Name (SSID):	Example-Wireless-Network	
Users	BSSID:	00:1E:2A:DB:87:D0	
WLAN Profiles	Security Suite:	WPA2-CCMP-TKIP	
	Signal Strength:	-45 dBm	
	Security		
	Key Type:	<input checked="" type="radio"/> Passphrase <input type="radio"/> Hex	
	Password:	.....	
	Advanced		
	<b>Apply</b>	Submit	

- Then select **Submit** to commit your changes to the device.

Status	Settings
<b>QuickConnect</b>	<b>WLAN Profile "Example-Wireless-Network"</b>
<b>Status</b>	Changed WLAN Profile New_Profile Instance to "Example-Wireless-Network". Changed WLAN Profile New_Profile Basic Network Name to "Example-Wireless-Network". Changed WLAN Profile New_Profile Security Suite to "WPA2". Changed WLAN Profile New_Profile Security WPAx Passphrase to "<Configured>". Changed WLAN Profile New_Profile Security WPAx Encryption to "CCMP TKIP"
<b>Network</b>	The changes have been successfully applied. <b>WARNING: The changes will not persist after reboot unless you submit.</b>
<b>Users</b>	
<b>WLAN Profiles</b>	
	<b>Basic</b>
	Network Name (SSID): Example-Wireless-Network
	State: <input checked="" type="radio"/> Enabled <input type="radio"/> Disabled
	<b>Security</b>
	Suite: WPA2
	Key Type: <input checked="" type="radio"/> Passphrase <input type="radio"/> Hex
	Password: .....
	Encryption: <input checked="" type="checkbox"/> CCMP <input checked="" type="checkbox"/> TKIP
	<b>Advanced</b>
	TX Power Maximum: 17 dBm
	Power Management: <input type="radio"/> Enabled <input checked="" type="radio"/> Disabled
	<b>Submit</b>

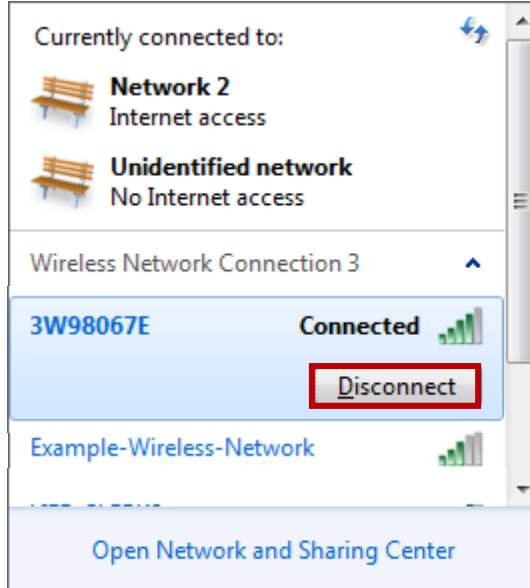
- Your Room Alert 3 Wi-Fi will automatically obtain an IP address on your network. Notice that the “L” LED on the Room Alert lights solid when it successfully connects.



Your Room Alert 3 Wi-Fi is now pushing sensor data to your GoToMyDevices account! For more information about viewing your Room Alert 3 Wi-Fi and configuring alerts in GoToMyDevices, see [Step 4](#).

**D. Disconnect From Your Room Alert 3 Wi-Fi's Wireless Access Point**

- Disconnect from the Room Alert 3 Wi-Fi's wireless access point by selecting it's name (in this example, **3W98067E**) and **Disconnect** in your wireless network list.



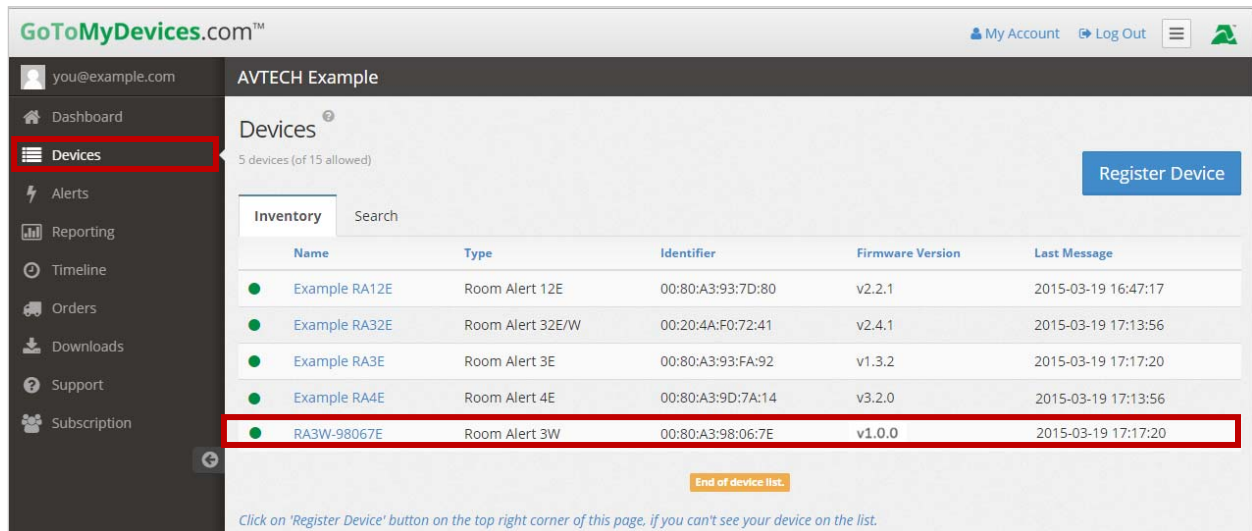
- Once you disconnect from the Room Alert's wireless access point:
  - Your computer should automatically reconnect to your regular Wi-Fi network.
  - The Room Alert 3 Wi-Fi's "soft AP" of 192.168.0.1 will no longer work. However, the Room Alert 3 Wi-Fi will continue to appear in your available networks list. You may manually reconnect to its access point if necessary by selecting its name and then **Connect**.

**Step 3: Connect Additional Components**

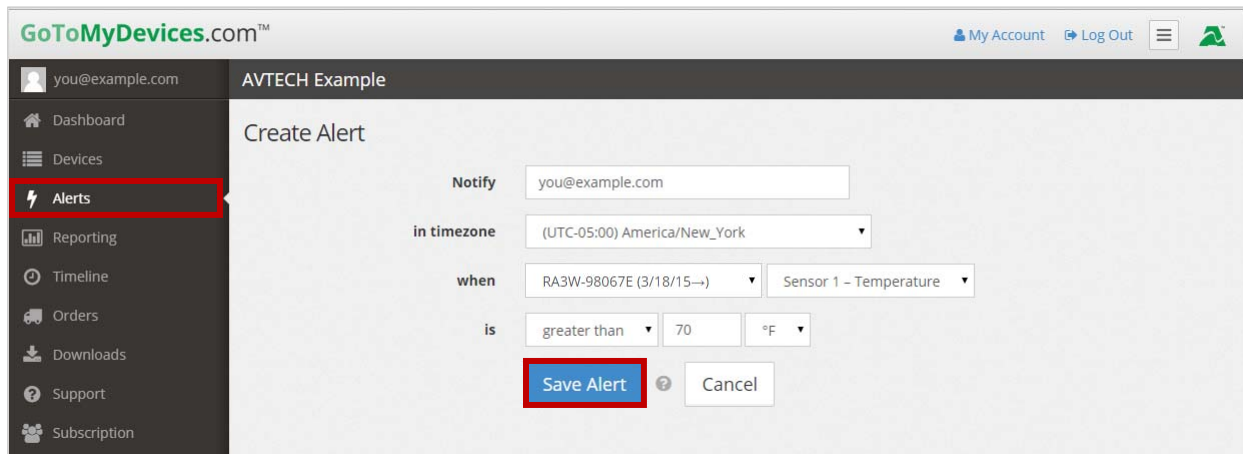
If you purchased additional components that are compatible, connect them according to the instructional material included with them.

### Step 4: Configure Alerts In Your GoToMyDevices Account

- Log in to your account at GoToMyDevices.com.
- Select **Devices**. Your Room Alert 3 Wi-Fi should automatically appear in your list of devices.



- Select **Alerts** → **Create Alert** to begin configuring alerts for your Room Alert 3 Wi-Fi.



TIP

You may also use AVTECH's Device ManageR software to monitor your Room Alert 3 Wi-Fi if you prefer. Device ManageR is available for download from your GoToMyDevices account.

## How To Use Room Alert 3 Wi-Fi's Web Interface

You may configure your Room Alert 3 Wi-Fi's network settings through its built-in web interface. To access the interface, you may do any of the following:

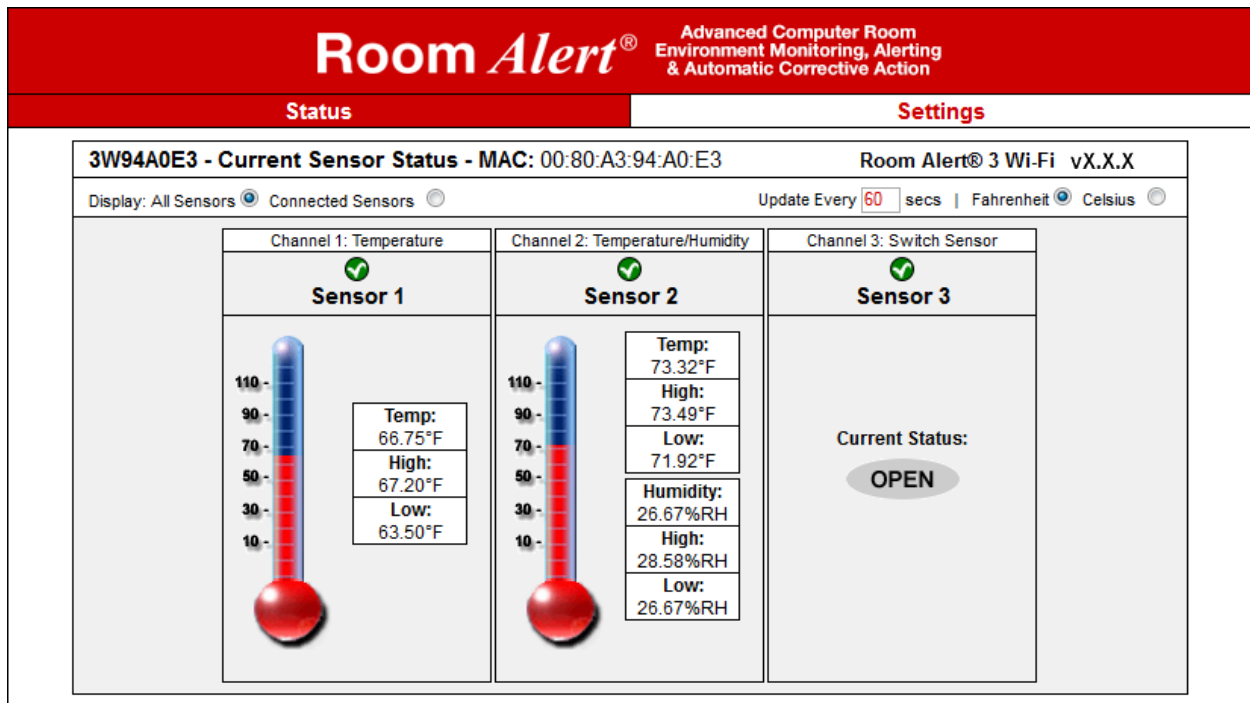
- Select your Room Alert 3 Wi-Fi in your GoToMyDevices.com account and click the "Device Interface" button.
- Select your Room Alert 3 Wi-Fi in Device Manager and click the "Open Web" button.
- Type the IP address of your Room Alert 3 Wi-Fi monitor directly into the address bar of your web browser.

Your Room Alert 3 Wi-Fi's web interface has 2 tabs:

- Status
- Settings

### Status

To view your Room Alert 3 Wi-Fi's current sensor status, click **Status** in the navigation bar at the top of your screen.





## Current Sensor Status Bar

Below the Status tab is the Current Sensor Status Bar, where you may view basic information about your Room Alert 3 Wi-Fi and make temporary adjustments to the sensor display.

- You may find your Room Alert 3 Wi-Fi's name and MAC address here.

<b>3W94A0E3</b>	<b>Current Sensor Status</b>	<b>MAC: 00:80:A3:94:A0:E3</b>	Room Alert® 3 Wi-Fi vX.X.X
Display: All Sensors <input checked="" type="radio"/> Connected Sensors <input type="radio"/>		Update Every <input type="text" value="60"/> secs	Fahrenheit <input checked="" type="radio"/> Celsius <input type="radio"/>

- To determine if your Room Alert 3 Wi-Fi's firmware is current, you may click **Room Alert 3 Wi-Fi vX.X.X** at the right.

<b>3W94A0E3 - Current Sensor Status - MAC: 00:80:A3:94:A0:E3</b>		<b>Room Alert® 3 Wi-Fi vX.X.X</b>
Display: All Sensors <input checked="" type="radio"/> Connected Sensors <input type="radio"/>		Update Every <input type="text" value="60"/> secs   Fahrenheit <input checked="" type="radio"/> Celsius <input type="radio"/>



**TIP**

Your Room Alert 3 Wi-Fi must be connected to the internet to check firmware versions.

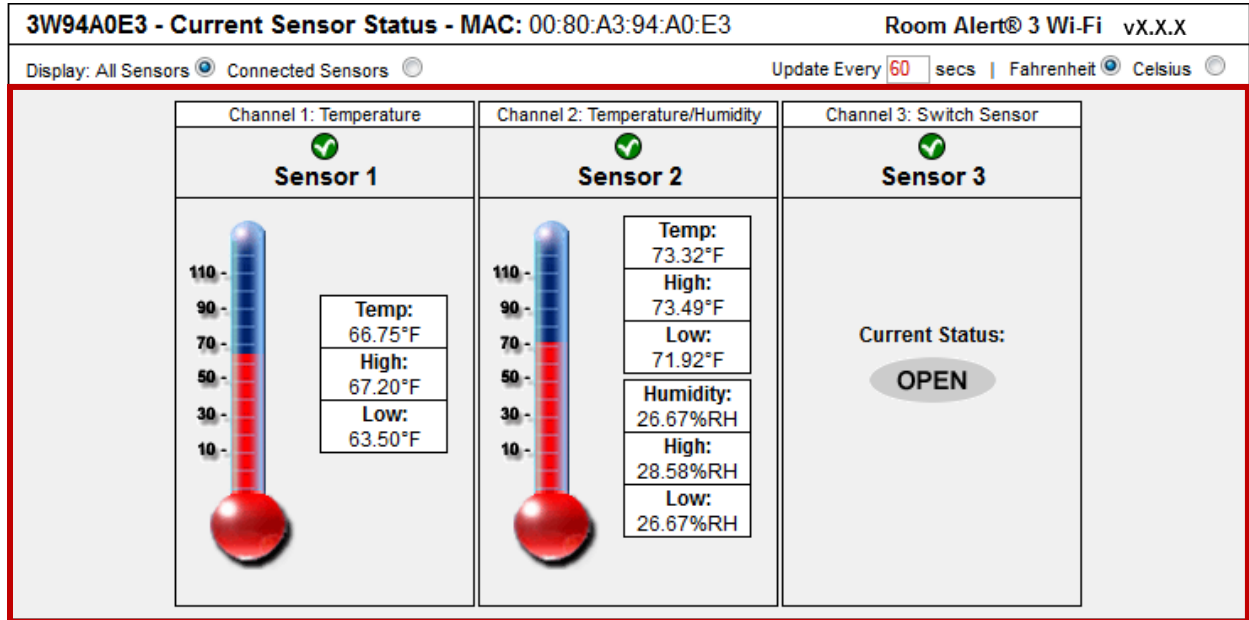
- To temporarily modify the refresh interval of the Status screen while viewing, which is 60 seconds (i.e., every 1 minute) by default, you may enter a value in seconds in the "Update Every" field. Click outside the field to temporarily commit the change.

<b>3W94A0E3 - Current Sensor Status - MAC: 00:80:A3:94:A0:E3</b>		Room Alert® 3 Wi-Fi vX.X.X
Display: All Sensors <input checked="" type="radio"/> Connected Sensors <input type="radio"/>		Update Every <input type="text" value="60"/> secs   Fahrenheit <input checked="" type="radio"/> Celsius <input type="radio"/>

- To temporarily toggle the temperature scale between Fahrenheit (F) and Celsius (C), click **Fahrenheit** or **Celsius**.

<b>3W94A0E3 - Current Sensor Status - MAC: 00:80:A3:94:A0:E3</b>		Room Alert® 3 Wi-Fi vX.X.X
Display: All Sensors <input checked="" type="radio"/> Connected Sensors <input type="radio"/>		Update Every <input type="text" value="60"/> secs   Fahrenheit <input type="radio"/> Celsius <input checked="" type="radio"/>

Sensor Display Area



In the main viewing pane of the Status tab is the Sensor Display Area. Here you may view the current readings for your sensors, which are displayed left to right as follows:

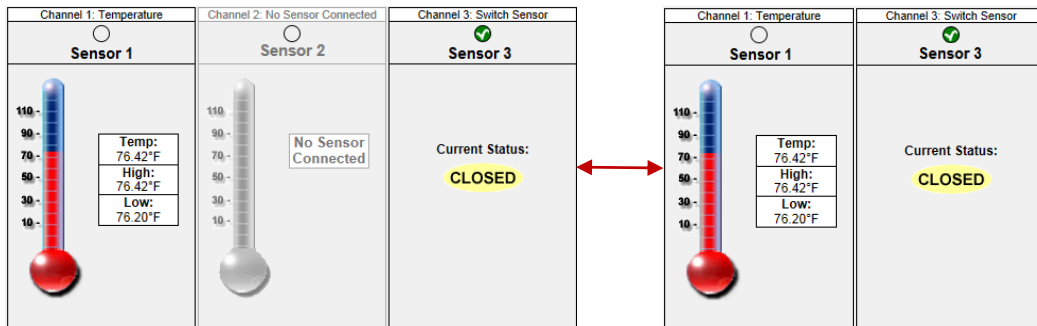
Channel 1:  
Internal Temperature Sensor

Channel 2:  
External Digital Sensor

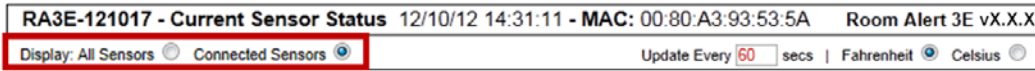
Channel 3:  
External Switch Sensor

*Display All Sensors / Connected Sensors*

If you have no external digital sensor connected, you may temporarily hide Channel 2.



1. To hide the disconnected digital sensor, click **Connected Sensors** in the Current Sensors Status Bar as shown here.



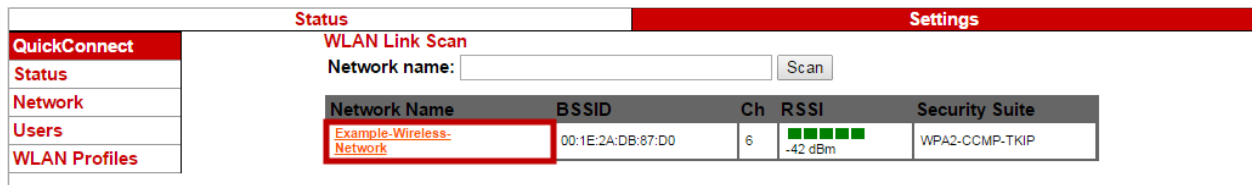
2. To toggle the view back to all 3 sensor channels, click **All Sensors**.

## Settings

### QuickConnect

Navigate to **Settings** → **QuickConnect** to open the QuickConnect screen.

You may select the wireless network you wish to connect the Room Alert 3 Wi-Fi to in this page.



For instructions, please refer back to [Step 2C Connect the Room Alert 3 Wi-Fi to your wireless network](#) in this manual.

### Status

Navigate to **Settings** → **Status** to open the WLAN Status screen.

Here you may see the device’s current network information, such as its current IP address, default gateway and domain name server (DNS).

## Room Alert 3 Wi-Fi

Status	Settings																																												
QuickConnect	<table border="1"> <thead> <tr> <th colspan="2">Product Information</th> </tr> </thead> <tbody> <tr> <td>Firmware Version:</td> <td></td> </tr> <tr> <td>Build Date:</td> <td>Dec 5 2014 (17:17:11)</td> </tr> <tr> <td>Serial Number:</td> <td>0080A3948707</td> </tr> <tr> <td>Uptime:</td> <td>0 days 01:17:10</td> </tr> <tr> <td>Permanent Config:</td> <td>saved</td> </tr> <tr> <th colspan="2">Network Settings</th> </tr> <tr> <td>MAC Address:</td> <td>00:80:A3:94:87:07</td> </tr> <tr> <th colspan="2">Interface ap0</th> </tr> <tr> <td>State:</td> <td>Up</td> </tr> <tr> <td>SSID:</td> <td>3W948707</td> </tr> <tr> <td>Security Suite:</td> <td>WPA2</td> </tr> <tr> <td>IP Address:</td> <td>192.168.0.1/24</td> </tr> <tr> <th colspan="2">Interface wlan0</th> </tr> <tr> <td>Connection State:</td> <td>Connected</td> </tr> <tr> <td>Radio Firmware Version:</td> <td>2.4.1</td> </tr> <tr> <td>Active WLAN Profile:</td> <td>Example-Wireless-Network</td> </tr> <tr> <td>IP Address:</td> <td>192.168.1.109/24</td> </tr> <tr> <td>Default Gateway:</td> <td>192.168.1.1</td> </tr> <tr> <td>Hostname:</td> <td></td> </tr> <tr> <td>Primary DNS:</td> <td>192.168.1.1</td> </tr> <tr> <td>Secondary DNS:</td> <td>0.0.0.0</td> </tr> </tbody> </table>	Product Information		Firmware Version:		Build Date:	Dec 5 2014 (17:17:11)	Serial Number:	0080A3948707	Uptime:	0 days 01:17:10	Permanent Config:	saved	Network Settings		MAC Address:	00:80:A3:94:87:07	Interface ap0		State:	Up	SSID:	3W948707	Security Suite:	WPA2	IP Address:	192.168.0.1/24	Interface wlan0		Connection State:	Connected	Radio Firmware Version:	2.4.1	Active WLAN Profile:	Example-Wireless-Network	IP Address:	192.168.1.109/24	Default Gateway:	192.168.1.1	Hostname:		Primary DNS:	192.168.1.1	Secondary DNS:	0.0.0.0
Product Information																																													
Firmware Version:																																													
Build Date:		Dec 5 2014 (17:17:11)																																											
Serial Number:		0080A3948707																																											
Uptime:		0 days 01:17:10																																											
Permanent Config:		saved																																											
Network Settings																																													
MAC Address:		00:80:A3:94:87:07																																											
Interface ap0																																													
State:		Up																																											
SSID:		3W948707																																											
Security Suite:		WPA2																																											
IP Address:		192.168.0.1/24																																											
Interface wlan0																																													
Connection State:		Connected																																											
Radio Firmware Version:		2.4.1																																											
Active WLAN Profile:		Example-Wireless-Network																																											
IP Address:		192.168.1.109/24																																											
Default Gateway:		192.168.1.1																																											
Hostname:																																													
Primary DNS:		192.168.1.1																																											
Secondary DNS:		0.0.0.0																																											
Status																																													
Network																																													
Users																																													
WLAN Profiles																																													

## Network

Navigate to **Settings** → **Network** to open the Network screen. You may view and configure your Room Alert's soft access point and wireless network settings on this page.

### Wireless Local Area Network (wlan0)

To view your wireless network settings on the “Network” page:

- Select **wlan0** + **Interface** + **Status**:

Status	Settings																																													
QuickConnect	<table border="1"> <tr> <td colspan="2">ap0 <b>wlan0</b></td> </tr> <tr> <td colspan="2"><b>Interface</b> Link</td> </tr> <tr> <td colspan="2"><b>Status</b> Configuration</td> </tr> <tr> <th colspan="3">Interface wlan0 Status</th> </tr> <tr> <th>Property</th> <th colspan="2">Status</th> </tr> <tr> <td>Status:</td> <td colspan="2">Link up</td> </tr> <tr> <td></td> <td colspan="2">[ Renew ]</td> </tr> <tr> <td>MAC Address:</td> <td colspan="2">00:80:A3:98:06:7E</td> </tr> <tr> <th></th> <th>Current</th> <th>After Reboot</th> </tr> <tr> <td>State:</td> <td>Enabled</td> <td>Enabled</td> </tr> <tr> <td>DHCP Client:</td> <td>Enabled</td> <td>Enabled</td> </tr> <tr> <td>IP Address:</td> <td>192.168.1.101/24</td> <td>(DHCP)</td> </tr> <tr> <td>Default Gateway:</td> <td>192.168.1.1</td> <td>(DHCP)</td> </tr> <tr> <td>Hostname:</td> <td></td> <td></td> </tr> <tr> <td>Primary DNS:</td> <td>192.168.1.1</td> <td>(DHCP)</td> </tr> <tr> <td>Secondary DNS:</td> <td>0.0.0.0</td> <td>(DHCP)</td> </tr> </table>	ap0 <b>wlan0</b>		<b>Interface</b> Link		<b>Status</b> Configuration		Interface wlan0 Status			Property	Status		Status:	Link up			[ Renew ]		MAC Address:	00:80:A3:98:06:7E			Current	After Reboot	State:	Enabled	Enabled	DHCP Client:	Enabled	Enabled	IP Address:	192.168.1.101/24	(DHCP)	Default Gateway:	192.168.1.1	(DHCP)	Hostname:			Primary DNS:	192.168.1.1	(DHCP)	Secondary DNS:	0.0.0.0	(DHCP)
ap0 <b>wlan0</b>																																														
<b>Interface</b> Link																																														
<b>Status</b> Configuration																																														
Interface wlan0 Status																																														
Property		Status																																												
Status:		Link up																																												
		[ Renew ]																																												
MAC Address:		00:80:A3:98:06:7E																																												
		Current	After Reboot																																											
State:		Enabled	Enabled																																											
DHCP Client:		Enabled	Enabled																																											
IP Address:		192.168.1.101/24	(DHCP)																																											
Default Gateway:		192.168.1.1	(DHCP)																																											
Hostname:																																														
Primary DNS:		192.168.1.1	(DHCP)																																											
Secondary DNS:		0.0.0.0	(DHCP)																																											

| Status |
| Network |
| Users |
| WLAN Profiles |

- Select **wlan0** + **Link** + **Status**:

Status	Settings																						
<ul style="list-style-type: none"> <li>QuickConnect</li> <li>Status</li> <li><b>Network</b></li> <li>Users</li> <li>WLAN Profiles</li> </ul>	<div style="text-align: right;">ap0 <b>wlan0</b></div> <hr/> <div style="text-align: right;">Interface <b>Link</b></div> <hr/> <div style="text-align: right;"><b>Status</b></div> <p><b>WLAN wlan0 Status</b></p> <table border="1"> <thead> <tr> <th>Property</th> <th>Status</th> </tr> </thead> <tbody> <tr> <td>Connection State:</td> <td>Connected</td> </tr> <tr> <td>Radio Firmware Version:</td> <td>2.4.1</td> </tr> <tr> <td>BSSID:</td> <td>00:1e:2a:db:87:d0</td> </tr> <tr> <td>SSID:</td> <td>Example-Wireless-Network</td> </tr> <tr> <td>Active WLAN Profile:</td> <td>Example-Wireless-Network</td> </tr> <tr> <td>Encryption:</td> <td>CCMP TKIP</td> </tr> <tr> <td>Security Suite:</td> <td>WPA2</td> </tr> <tr> <td>Channel:</td> <td>6</td> </tr> <tr> <td>RSSI:</td> <td>-49 dBm</td> </tr> <tr> <td>IP Address:</td> <td>192.168.1.110</td> </tr> </tbody> </table>	Property	Status	Connection State:	Connected	Radio Firmware Version:	2.4.1	BSSID:	00:1e:2a:db:87:d0	SSID:	Example-Wireless-Network	Active WLAN Profile:	Example-Wireless-Network	Encryption:	CCMP TKIP	Security Suite:	WPA2	Channel:	6	RSSI:	-49 dBm	IP Address:	192.168.1.110
Property	Status																						
Connection State:	Connected																						
Radio Firmware Version:	2.4.1																						
BSSID:	00:1e:2a:db:87:d0																						
SSID:	Example-Wireless-Network																						
Active WLAN Profile:	Example-Wireless-Network																						
Encryption:	CCMP TKIP																						
Security Suite:	WPA2																						
Channel:	6																						
RSSI:	-49 dBm																						
IP Address:	192.168.1.110																						

To configure your wireless network settings on the “Network” page, select **wlan0** + **Interface** + **Configuration**. You may set a static IP address for your Room Alert 3 Wi-Fi by following the steps below:

Status	Settings														
<ul style="list-style-type: none"> <li>QuickConnect</li> <li>Status</li> <li><b>Network</b></li> <li>Users</li> <li>WLAN Profiles</li> </ul>	<div style="text-align: right;">ap0 <b>wlan0</b></div> <hr/> <div style="text-align: right;"><b>Interface</b> Link</div> <hr/> <div style="text-align: right;">Status <b>Configuration</b></div> <p><b>Interface wlan0 Configuration</b></p> <table border="1"> <tbody> <tr> <td>State:</td> <td><input checked="" type="radio"/> Enabled <input type="radio"/> Disabled</td> </tr> <tr> <td>DHCP Client:</td> <td><input type="radio"/> Enabled <input checked="" type="radio"/> Disabled</td> </tr> <tr> <td>IP Address:</td> <td><input type="text" value="192.168.1.99"/></td> </tr> <tr> <td>Default Gateway:</td> <td><input type="text" value="192.168.1.1"/></td> </tr> <tr> <td>Hostname:</td> <td><input type="text"/></td> </tr> <tr> <td>Primary DNS:</td> <td><input type="text" value="8.8.8.8"/></td> </tr> <tr> <td>Secondary DNS:</td> <td><input type="text" value="&lt;None&gt;"/></td> </tr> </tbody> </table> <div style="text-align: center;"><b>Submit</b></div>	State:	<input checked="" type="radio"/> Enabled <input type="radio"/> Disabled	DHCP Client:	<input type="radio"/> Enabled <input checked="" type="radio"/> Disabled	IP Address:	<input type="text" value="192.168.1.99"/>	Default Gateway:	<input type="text" value="192.168.1.1"/>	Hostname:	<input type="text"/>	Primary DNS:	<input type="text" value="8.8.8.8"/>	Secondary DNS:	<input type="text" value="&lt;None&gt;"/>
State:	<input checked="" type="radio"/> Enabled <input type="radio"/> Disabled														
DHCP Client:	<input type="radio"/> Enabled <input checked="" type="radio"/> Disabled														
IP Address:	<input type="text" value="192.168.1.99"/>														
Default Gateway:	<input type="text" value="192.168.1.1"/>														
Hostname:	<input type="text"/>														
Primary DNS:	<input type="text" value="8.8.8.8"/>														
Secondary DNS:	<input type="text" value="&lt;None&gt;"/>														

1. In “State,” leave the default, **Enabled** selected.
2. In “DHCP Client,” select **Disabled**.
3. In “IP Address,” enter the static IP. In this example, the static IP is 192.168.1.99.
4. In “Default Gateway,” enter the default gateway. In this example, the default gateway is 192.168.1.1.

## Room Alert 3 Wi-Fi

5. You may enter a hostname if you wish. (This hostname will appear in the *Settings* → *Status* table and in the *Settings* → *Network* → *wlan0* table.)
6. In Primary DNS, enter the domain name server you want used by default. In this example, the DNS is 8.8.8.8.
7. In “Secondary DNS,” you may enter a back-up DNS if you wish. In this example, we have not configured one.
8. Then select **Submit** to commit your changes to the device.

## Users

Navigate to **Settings** → **Users** to open the Users screen.

You may change the password for the web interface here. (The default password is PASSWORD.)

1. In “Password,” enter your new password.
2. Select **Apply** to temporarily save your changes.
3. Select **Save** to commit your changes to the device.

	Status	Settings
QuickConnect	Users admin Configuration	
Status	Password: <input type="password" value="....."/>	
Network		
<b>Users</b>		
WLAN Profiles		

The next time you log in to your Room Alert 3 Wi-Fi web interface, enter these credentials:

**Username:** admin

**Password:** <your new password>




You may not change the username for your Room Alert 3 Wi-Fi's web interface. The username is always “admin.”

## WLAN Profiles

Navigate to **Settings** → **WLAN Profiles** to open the WLAN Profiles screen.

You may add or delete network connections here.

Status	Settings
<b>QuickConnect</b>	<b>WLAN Profile Management</b>
<b>Status</b>	View or Edit <span style="float: right;">Delete</span>
<b>Network</b>	<b>Inactive-Wireless-Network</b> <input type="checkbox"/>
<b>Users</b>	<b>Example-Wireless-Network</b>  <input checked="" type="checkbox"/>
<b>WLAN Profiles</b>	<input type="text" value="Create new WLAN Profile"/>
	<input type="button" value="Apply"/> <input type="button" value="Submit"/>

To delete a network connection from your WLAN Profile list:

1. Select **Delete**.
2. Select **Apply** to temporarily save your changes.
3. Select **Submit** to commit your changes to the device.



**TIP**

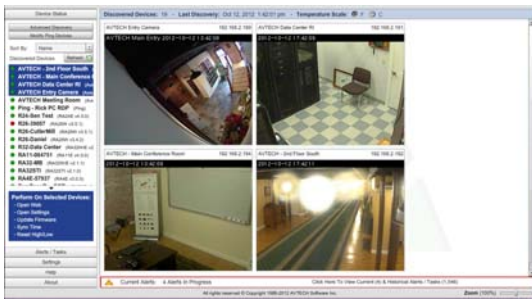
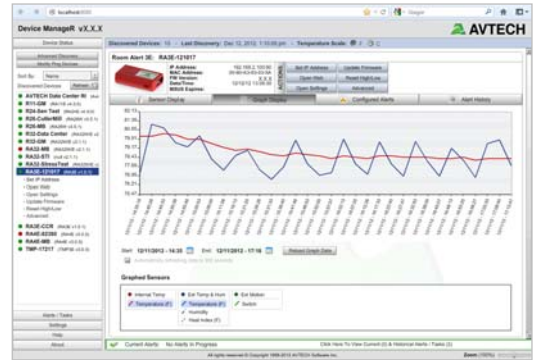
If you are deleting the only wireless network in your list, skip "Apply" and immediately select **Submit**.

## Introduction To AVTECH's Device Manager

Device Manager is AVTECH's all-in-one software solution for the discovery, management, monitoring, alerting, logging, graphing, automatic action and more of AVTECH's physical environment monitoring hardware and Axis network cameras.

### Manage Unlimited Room Alert & TemPageR Montiors

- ✓ Control all of your Room Alert and TemPageR units from a single web browser interface, accessible from anywhere by internet.
- ✓ Take automatic corrective actions, run scripts and notify unlimited contacts on the device of their choice.
- ✓ Use dashboard widgets to customize your interface and display the information most important to you in real time.
- ✓ Automatically log and graph all of your sensor data for a comprehensive history of environmental conditions. Control the log file size automatically.

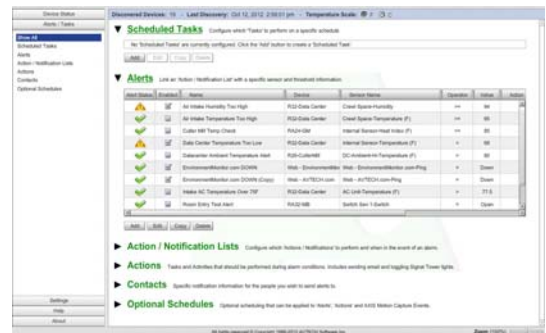


### Manage Unlimited Network Cameras

- ✓ View all of your Axis camera displays simultaneously—and control who has access!
- ✓ Automatically email Axis camera snapshots in response to alert conditions.
- ✓ Customize your alerts with links to your Axis cameras for one-click access to real-time video.

### Expand Device Manager's Functionality With Plugins

- ✓ Send customized reports with advanced statistics according to a schedule or in response to alert conditions. Modify according to each user's needs.
- ✓ Log off, shut down, reboot and execute commands on Windows and Linux / Unix systems across your network.
- ✓ Automatically text or call contacts with alerts using a text, voice or GSM (satellite) modem.



A license for Device Manager is included FREE with the purchase of any AVTECH environment monitor. Download it now from your account at AVTECH's state-of-the art cloud service, [GoToMyDevices.com](http://GoToMyDevices.com).



### What are Digital vs Switch Sensors?

**Digital Sensors** are those that monitor in real-time to provide digital values that can be viewed through a web or application interface, passed in alert notifications or logged for creating charts and graphs. Common digital sensors include Temperature, Outdoor Temperature, Fluid Temperature, and Temperature & Humidity.

**Switch Sensors** are those that do not provide real-time values and instead present their real-time status as being in or out of a specific state (i.e. on / off, make / break, open / closed). These sensors have a built-in circuit that changes status as a threshold is passed, indicating an alarm condition.

**\$40**  
**BEST SELLER**

### Digital Temperature Sensor



TMP-SDT-SEN (\$40)  
TMP-DT50-SEN (\$55)  
TMP-DT100-SEN (\$80)

- Real-time temperature sensor.
- Temperature range: -67 – 257° F, -55 – 125° C.
- Compatible with Room Alert 32E/W, 26E/W, 24E, 12E, 11E, 7E, 4E, 3E, 3W, TemPageR 4E & 3E, 3W, WiSH & WiSPR.
- Options include sensor with attached cables of 25', 50' and 100' length. Max cable distance is 100'.

INCLUDES: Digital Temperature Sensor With 25' RJ-11 Cable & Installation Note.

**\$55**  
**OUTDOOR**

### Digital Outdoor Temperature Sensor



TMP-DOT-SEN (\$55)  
TMP-DOT50-SEN (\$70)  
TMP-DOT100-SEN (\$95)

- Real-time temperature sensor.
- Temperature range: -67 – 257° F, -55 – 125° C.
- Silicon coating offers extra resilience for monitoring outdoors or in other harsh environments.
- Compatible with Room Alert 32E/W, 26E/W, 24E, 12E, 11E, 7E, 3E, 3W, TemPageR 4E & 3E, WiSH & WiSPR.
- Options include sensor with attached cables of 25', 50' and 100' length. Max cable distance is 100'.

INCLUDES: Digital Outdoor Temperature Sensor With 25' RJ-11 Cable & Installation Note.

**\$90**  
**LAB READY**

### Digital Fluid Temperature Sensor



TMP-DFT-SEN (\$90)  
TMP-DFT50-SEN (\$105)  
TMP-DFT100-SEN (\$130)

- Real-time fluid temperature sensor.
- Temperature range: -67 – 257° F, -55 – 125° C.
- Perfect for cooler or freezer monitoring of food, medicines and fluid temperature.
- Compatible with Room Alert 32E/W, 26E/W, 24E, 12E, 11E, 7E, 4E, 3E, 3W, TemPageR 4E & 3E, WiSH & WiSPR.
- Options include sensor with attached cables of 25', 50' and 100' length. Max cable distance is 100'.

INCLUDES: Digital Fluid Temperature Sensor With 25' RJ-11 Cable & Installation Note.

**\$90**  
**BEST SELLER**

### Digital Temperature & Humidity Sensor



RMA-DTH-SEN (\$90)  
RMA-DTH50-SEN (\$105)  
RMA-DTH100-SEN (\$130)

- Real-time temperature and humidity sensor.
- Temperature range: -67 – 257° F, -55 – 125° C.
- Relative humidity range: 5 to 95% non-condensing.
- Compatible with Room Alert 32E/W, 26E/W, 24E, 12E, 11E, 4E, 3E, 3W, WiSH & WiSPR.
- Options include sensor with attached cables of 25', 50' and 100' length. Max cable distance is 100'.

INCLUDES: Digital Temperature & Humidity Sensor With 25' RJ-11 Cable & Installation Note.

**\$90**  
**NEW**

### Digital Temperature & Analog Sensor



RMA-DTA-SEN

- Real-time temperature and analog sensor port.
- Temperature range: -67 – 257° F, -55 – 125° C.
- Outputs 0 - 5 VDC in real-time to analog sensor.
- By connecting an external analog sensor, such as a Current Loop, the user can track efficiency.
- Max sensor cable distance up to 100', includes 25'.
- Compatible with Room Alert 32E/W, 24E, 12E, 4E, 3E & 3W.

INCLUDES: Digital Temperature & Analog Sensor With 25' RJ-11 Cord & Installation Note.

**\$55**  
**BEST SELLER**

### Main Power Sensor



RMA-PS1-SEN

- Real-time main power on/off status.
- Monitors main, UPS or single phase power.
- Max sensor cable distance up to 900', includes 25'.
- Compatible with Room Alert 32E/W, 26E/W, 24E, 12E, 11E, 7E, 4E, 3E, 3W, WiSH & WiSPR.

INCLUDES: Main Power Sensor With 25' Cable, 5V Power Adapter & Installation Note.

**\$85**  
**BEST VALUE**

### Mini UPS & Power Sensor (MUPS)



RMA-MUPS-SEN

- Real-time main power on/off status.
- Monitors main, UPS or single phase power.
- Provides battery backup power for 15 minutes or more for any 5V device.
- Max sensor cable distance up to 900', includes 25'.
- Plugs in-line with AVTECH's 5V Power Adapter.
- Compatible with Room Alert 32E/W, 26E/W, 24E, 12E, 11E, 7E, 4E, 3E, 3W, WiSH & WiSPR.

INCLUDES: Mini UPS & Power Sensor With 25' Cable & Installation Note.

\* More Sensors, Cameras, Packages & Accessories Online.

**\$255**  
**BEST SELLER**

### Flood Sensor w/8' Cable



RMA-F008-SEN

- Real-time recognition of water/flood anywhere along the length of the patented flood cable.
- 8' Flood Cable with 25' RJ-11 leader cable.
- Alert triggered when sensor is activated or power lost.
- Flood cable can be extended by 8' lengths.
- Compatible with Room Alert 32E/W, 26E/W, 24E, 12E, 11E, 7E, 4E, 3E, 3W, WiSH & WiSPR.

INCLUDES: Flood Sensor With 8' Flood Cable & 25' RJ-11 Leader Cable, 25' Sensor Cable, 5V Power Adapter, Mounting Screws & Installation Note.

**\$125**

### Flood Sensor 8' Cable Extension



RMA-008CE-SEN

- Real-time recognition of water/flood anywhere along the length of the patented flood cable.
- Can be extended by adding additional 8' extensions.
- Designed to extend the length of the AVTECH Flood Sensor Cable to several hundred feet.
- **Requires connection in-line between AVTECH's Flood Sensor (internal on Room Alert 26E/W) and Flood Sensor Cable.**

INCLUDES: 8' Flood Cable Extension & Installation Note.

**\$380**  
**BEST VALUE**

### Flood Sensor w/24' Cable



RMA-F024-SEN

- Real-time recognition of water/flood anywhere along the length of the patented flood cable.
- 24' Flood Cable with 25' RJ-11 leader cable.
- Alert triggered when sensor is activated or power lost.
- Flood cable can be extended by 8' lengths.
- Compatible with Room Alert 32E/W, 26E/W, 24E, 12E, 11E, 7E, 4E, 3E, 3W, WiSH & WiSPR.

INCLUDES: Flood Sensor With 24' Flood Cable & 25' RJ-11 Leader Cable, 25' Sensor Cable, 5V Power Adapter, Mounting Screws & Installation Note.

**\$205**  
**HEAVY DUTY**

### Flood Sensor (Spot)



RMA-FS2-SEN

- Real-time recognition of flood/water under pod.
- Specially designed to interface with Room Alert.
- Powered by 9V Alkaline battery (included).
- Max sensor cable distance up to 900', includes 25'.
- Compatible with Room Alerts 32E/W, 26E/W, 24E, 12E, 11E, 7E, 4E, 3E, 3W, WiSH & WiSPR.

INCLUDES: Flood Sensor (Spot) With 25' Cable, 9V Alkaline Battery & Installation Note.

**\$275**  
**NEW**

### Extreme Low Temperature Sensor



RMA-ET1-SEN

- Real-time low extreme temperature sensor.
- Temperature range: -328° – 32° F, -200° – 0° C
- Analog, 1-5 VDC.
- Sensor standardization Dn IEC 751 Class B.
- Compatible with Room Alert 32E/W, 12E & Digital Temperature & Analog Sensor.

INCLUDES: Extreme Temperature Sensor (High or Low), 10' Thermocouple Coil, 18V Power Adapter, 25' Speaker Wire Cable & Installation Note.

**\$275**  
**NEW**

### Extreme High Temperature Sensor



RMA-ET2-SEN

- Real-time high extreme temperature sensor.
- Temperature range: -40° – 743° F, -40° – 395° C
- Analog, 1-5 VDC.
- Sensor standardization Dn IEC 751 Class B.
- Compatible with Room Alert 32E/W, 12E & Digital Temperature & Analog Sensor.

INCLUDES: Extreme Temperature Sensor (High or Low), 10' Thermocouple Coil, 18V Power Adapter, 25' Speaker Wire Cable & Installation Note.

**\$85**  
**NEW**

### Current Loop 1 (0-50A)



RMA-CL1-SEN

- Monitors electrical current flowing through a single-phase powered cable.
- Monitor output: 0-10A, 0-20A & 0-50A.
- Connects via Room Alert Analog Sensor Port or Digital Temperature & Analog Sensor.
- Operates in 0 - 95% RH, non-condensing environment.
- Low-voltage 2-wire cable connection.
- Compatible with Room Alert 32E/W, 12E & Digital Temperature & Analog Sensor.

INCLUDES: Current Loop 1 With 25' Cable, Mounting Screws & Installation Note.

**\$85**  
**NEW**

### Current Loop 2 (0-250A)



RMA-CL2-SEN

- Monitors electrical current flowing through a single-phase powered cable.
- Monitor output: 0-100A, 0-200A & 0-250A.
- Connects via Room Alert Analog Sensor Port or Digital Temperature & Analog Sensor.
- Operates in 0 - 95% RH, non-condensing environment.
- Low-voltage 2-wire cable connection.
- Compatible with Room Alert 32E/W, 12E & Digital Temperature & Analog Sensor.

INCLUDES: Current Loop 2 With 25' Cable, Mounting Screws & Installation Note.

\* More Sensors, Cameras, Packages & Accessories Online.

**\$195**  
**NEW**

### Water Tank Level Sensor



RMA-WTL1-SEN (NC)  
RMA-WTL2-SEN (NO)

- Real-time recognition of water level rise or fall past an established level. Use to indicate leaks, flooding or need to refill water tank.
- Max sensor cable distance up to 900', includes 25'.
- Available in Normally Closed (NC) and Normally Open (NO) models.
- Compatible with Room Alert 32E/W, 26E/W, 24E, 12E, 11E, 7E, 4E, 3E, 3W, WiSH & WiSPR.

INCLUDES: Water Tank Level Sensor With 25' Cable & Installation Note.

**\$225**  
**NEW**

### Fuel Tank Level Sensor



RMA-FTL1-SEN (NC)  
RMA-FTL2-SEN (NO)

- Real-time recognition of fuel level rise or fall past an established level. Use to indicate leaks, overflow or need to refill fuel tank.
- Max sensor cable distance up to 900', includes 25'.
- Available in Normally Closed (NC) and Normally Open (NO) models.
- Compatible with Room Alert 32E/W, 26E/W, 24E, 12E, 11E, 7E, 4E, 3E, 3W, WiSH & WiSPR.

INCLUDES: Fuel Tank Level Sensor With 25' Cable & Installation Note.

**\$40**  
**BEST SELLER**

### Air Flow 1 Sensor (NC)



RMA-AF1-SEN

- Real-time recognition of air flow stop/start.
- Use in HVAC duct, under raised floors, or near fan.
- Max sensor cable distance up to 900', includes 25'.
- Recommended for IT installations.
- Compatible with Room Alert 32E/W, 26E/W, 24E, 12E, 11E, 7E, 4E, 3E, 3W, WiSH & WiSPR.

INCLUDES: Air Flow 1 Sensor (Normally Closed) With 25' Cable & Installation Note.

**\$40**

### Air Flow 2 Sensor (NO)



RMA-AF2-SEN

- Real-time recognition of air flow stop/start.
- Use in HVAC duct, under raised floors, or near fan.
- Max sensor cable distance up to 900', includes 25'.
- Compatible with Room Alert 32E/W, 26E/W, 24E, 12E, 11E, 7E, 4E, 3E, 3W, WiSH & WiSPR.

INCLUDES: Air Flow 2 Sensor (Normally Open) With 25' Cable & Installation Note.

**\$45**

### Motion Sensor



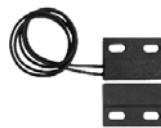
RMA-MOT2-SEN

- Detect motion up to approximately 35' with 84° angle.
- Alert triggered when sensor is activated.
- Powered by 12V power adapter (included).
- Max sensor cable distance up to 900', includes 25'.
- Compatible with Room Alert 32E/W, 26E/W, 24E, 12E, 11E, 7E, 4E, 3E, 3W, WiSH & WiSPR.

INCLUDES: Motion Sensor With 25' Cable, 12V Power Adapter & Installation Note.

**\$25**

### Room Entry Sensor



RMA-RE1-SEN

- Easy recognition of door/cabinet open or closed status.
- Standard use on door or window and adjoining frame.
- Max sensor cable distance up to 900', includes 25'.
- **Requires connection to Sound, Light & Entry (SLE) unit for alert on momentary status change.**
- Compatible with Room Alert 32E/W, 26E/W, 24E, 12E, 11E, 7E, 4E, 3E, 3W, WiSH & WiSPR.

INCLUDES: Room Entry Sensor With 25' Cable & Installation Note.

**\$185**  
**HEAVY DUTY**

### Panic Button 1



RMA-PB1-SEN

- Designed to be used as an emergency alarm to provide warning where someone is working and may need help or conditions reach an alarm state.
- Palm or foot size, locks in place, pull to release.
- NEMA rated for weather and industrial use.
- Compatible with Room Alert 32E/W, 26E/W, 24E, 12E, 11E, 7E, 4E, 3E, 3W, WiSH & WiSPR.

INCLUDES: Panic Button 1 With 25' Cable & Installation Note.

**\$75**

### Smoke Sensor w/Escape Light



RMA-SS1-SEN

- Real-time recognition of smoke or fire.
- Audible alert and 'escape' light is triggered when sensor is activated due to smoke or fire.
- Powered by 9V Alkaline battery (included).
- Max sensor cable distance up to 900', includes 25'.
- Compatible with Room Alert 32E/W, 26E/W, 24E, 11E, 7E, 4E, 3E, 3W, WiSH & WiSPR.

INCLUDES: Smoke Sensor w/Escape Light, 25' Cable, 9V Alkaline Battery, Mounting Screws & Installation Note.

\* More Sensors, Cameras, Packages & Accessories Online.

**\$250**  
**POPULAR**

### Light Tower w/Audio \*\*



ST-RYG-LT

- Light Tower lights turn on when alarms are detected (i.e. pings fail, high temps, room entry, etc.).
- Lights turn on/off via SNMP set, URL & interactively via AVTECH's Device Manager software.
- Adjustable audio alarm with intensity range of 0 to 95 dB (at 1m).
- Includes 15' Light Cable; 25' Extension Cable available.
- **Room Alert 32E/W, 12E & 3E require LT-32-ADP.**
- Compatible with Room Alert 32E/W, 12E, 4E & 3E.

INCLUDES: Light Tower w/Audio, Red, Yellow & Green Lights, 15' Cable, Mounting Bracket & Installation Note.

**\$125**

### Relay Switch Sensor (Low Voltage) \*\*



RMA-RELAY-SEN

- Allows low voltage devices to be turned on/off.
- Three (3) device relays with visible relay status lights.
- One (1) general alarm relay for connection to alarm panel/box.
- Each relay supports 0.3A at 125VAC or 1A at 24VDC.
- **Room Alert 32E/W, 12E & 3E require LT-32-ADP.**
- Compatible with Room Alert 4E directly.

INCLUDES: Relay Switch Sensor With 25' Cable & Installation Note.

**\$75**

### 25' Light Tower w/Audio Extension



ST-025G2-CAB

- Designed to extend the length of AVTECH's Light Tower w/Audio.
- Can be extended by adding additional 25' extensions. Maximum extension length is 100'.
- Requires a connection in-line between AVTECH's Light Tower w/Audio and Room Alert 32E/W, or 4E environment monitors.
- Compatible with Light Tower w/Audio ONLY.

INCLUDES: 25' Light Tower Extension Cable & Installation Note.

**\$55**

### Light Tower & Relay Adapter \*\*



LT-32-ADP

- **Required to connect the Light Tower, Light Tower w/Audio or Relay Switch Sensor to AVTECH's Room Alert 32E/W, 12E or 3E.** Allows Light Tower, Light Tower w/Audio or Relay Switch Sensor installs up to 100' away from Room Alert ID box via RJ-11.
- Includes one (1) relay that can be used to turn on/off low voltage devices automatically in response to an alarm condition and separate 5V power supply.
- The relay supports 0.3A at 125VAC or 1A at 24VDC.

INCLUDES: Light Tower & Relay Adapter, 25' RJ-11 Cable, 5V Power Adapter & Installation Note.

**\$175**  
**BEST SELLER**

### GSM Modem w/USB Connect



MOD-GSM-1

- Immediate connectivity to any GSM/GPRS network.
- Controlled via AT&T commands.
- Use with AVTECH's Dial Out Plugin and Device Manager software to trigger modem to dial out to any GSM network and send your alert generated by Room Alert, TemPageR or Axis camera.
- **Requires PC with USB.**
- Compatible with AVTECH's Device Manager software.

INCLUDES: AirLink GL 6110 GSM Modem w/USB Connect, 8' USB Connection Cable, FME Antenna & Installation Note.

**\$75**

### Sound, Light & Entry Sensor (SLE)



RMA-SLE-SEN

- Real-time recognition of sound, light and/or entry. Includes external Room Entry Sensor (\$25 value).
- Specially designed to interface with Room Alert.
- Max sensor cable distance up to 900', includes 25'.
- **Required for alerting on momentary status changes of Room Entry Sensor (i.e. instant open/close).**
- Compatible with Room Alert 32E/W, 26E/W, 24E, 12E, 11E, & 7E.

INCLUDES: Sound, Light & Entry Sensor With 25' Cable, Room Entry Sensor, 5V Power Adapter & Installation Note.

**\$70**

### Power Over Ethernet Active Splitter



POE-ADP-01

- Allows easy integration of Power over Ethernet (PoE) for a non PoE enabled Room Alert monitor.
- Use with a non PoE Room Alert monitor on a PoE enabled network.
- Active Splitter supports 10/100BaseT.
- Compatible with Room Alert 26E/W, 24E, 11E, 7E, 4E, TemPageR 4E, 3E, WiSH & WiSPR.

INCLUDES: PoE Ethernet Active Splitter (5V, RoHS), 2 Adapter Cables & Installation Note.

**\$70**

### Power Over Ethernet Midspan Injector



POE-INJ-01

- Allows easy integration of Power over Ethernet (PoE) for a PoE enabled Room Alert monitor.
- Use in-line with a PoE powered Room Alert monitor when a network is not PoE enabled.
- Midspan Injector supports 10/100BaseT.
- Compatible with Room Alert 32E/W, 12E & 3E

INCLUDES: PoE Midspan Injector (5V, RoHS), Power Cable & Installation Note.

\* More Sensors, Cameras, Packages & Accessories Online.

\*\* Room Alert 32E/W, 12E & 3E require use of LT-32-ADP.

# Plugin Bundles For Device *ManageR*™

Easy-To-Use Plugins Enhance The Capabilities Of AVTECH's Device ManageR

## Plugin - Windows Bundle (Shutdown, Reboot, Log Off & Script) ADM-WINB-PAS

- **Shutdown Windows Systems Remotely Across The Network.** When used with the Device ManageR, this plugin can perform a forced power-down of target systems. Use it to shutdown an unlimited number of Windows systems across the network... individually, in groups, simultaneously, sequentially or according to a schedule. Shutdown systems both automatically without user interaction or interactively from anywhere to save equipment from damage due to extremes.
- **Reboot Windows Systems Remotely Across The Network.** When used with Device ManageR this plugin will perform a forced reboot of the target system. Use it to reboot an unlimited number of Windows systems across the network... individually, in groups, simultaneously, sequentially or according to a defined schedule. Monitoring a system or device via a Ping Object? Use the 'Reboot Action' to restore the service being monitored if/when it stops responding.
- **Log Off Windows Systems Remotely Across The Network.** When used with Device ManageR, this plugin will perform a forced log off of the target system. Use it to log off an unlimited number of Windows systems across the network... individually, in groups, simultaneously, sequentially or according to a defined schedule. Issue log off responses for security, to manage power consumption or more from anywhere in the world by using Device ManageR's easy-to-use web browser interface.
- **Execute Windows Commands, Batch Files Or VBScripts.** When used with Device ManageR this plugin will allow users to execute Windows commands, batch files or VBScripts when alerts are detected. Each instance of the Windows Scripting action will be able to perform one method at a time, however, there are no limits on the number of instances that can be created.
- **Perform Windows Audible Actions.** When used with Device ManageR, this plugin will allow users to automatically speak alert text or play a sound file over the Device ManageR host system's sound card as an alert notification. Use the plugin to notify managers and staff immediately when events occur or issues are resolved, especially effective when users leave their smart phones at their desks.



## Plugin - Dial Out Bundle (GSM, Text & Voice) ADM-DOB-PAS

- **Send Text Messages To Mobile Devices Via A GSM Modem Or Phone.** This plugin action will use a GSM modem or phone connected to the Device ManageR host system to send a text message via satellite to configured contacts when issues or events occur across the network. Use it to send text messages to an unlimited number of contacts... individually, in groups, simultaneously, sequentially or according to a defined schedule. Send notifications both automatically and immediately to save equipment from environment extremes.
- **Send Text Messages To Mobile Devices Through A Modem Via TAP Service, Or Dial A Phone Directly To Play Dial Tones.** This plugin can be used to call/text an unlimited number of phones... individually, in groups, simultaneously, sequentially or according to a defined schedule. Receiving phones that are 'non-text enabled' can set a customized description or name for the dial out line for easy identification, such as 'Device ManageR' or 'Data Center Alert'. Send notifications both automatically and immediately to save equipment from environment extremes.
- **Call And Play Audio Messages To Mobile Devices Via A GSM or Voice Modem.** This plugin can be used to dial a phone directly and play voice messages to an unlimited number of phones... individually, in groups, simultaneously, sequentially or according to a defined schedule. Send notifications both automatically and immediately to save equipment from environment extremes. Great for 'non-text enabled' phones.



## Plugin - Report Generator ADM-REP-PAS

**Automatically Generate And Email Scheduled Status Reports.** When used with Device ManageR, this plugin allows users to schedule and send email to configured contacts with status updates and advanced statistics on all or select discovered devices (i.e. Room Alert), alerts detected by Device ManageR and more. View and print status and/or statistics for selected environmental sensors within computer rooms, data centers, and other facilities. Keywords are available that allow users to insert real-time values for the number of alerts in progress, number of alerts designated time period, number of devices discovered, current sensor readings and much more. An unlimited number of reports can be created, allowing users the flexibility to create different reports for different contact, or to generate reports according to different schedules (i.e. periodic, daily, weekly or monthly report) or different facilities.



# Plugin Bundles For Device *ManageR*™

Easy-To-Use Plugins Enhance The Capabilities Of AVTECH's Device ManageR

## Plugin - Unix / Linux Bundle (Report, Windows, Unix / Linux, Dial Out) ADM-UNLB-PAS

- **Shutdown Unix / Linux Systems Remotely Across The Network.** When used with Device ManageR, this plugin can perform a forced power-down of the target system. Use it to shutdown an unlimited number of Unix/Linux systems across the network... individually, in groups, simultaneously, sequentially or according to a defined schedule. Shutdown systems both automatically without user interaction or interactively from anywhere to save equipment from damage due to environment extremes.
- **Reboot Unix / Linux Systems Remotely Across The Network.** When used with Device ManageR, this plugin will perform a forced reboot of the target system. Use it to reboot an unlimited number of Unix/Linux systems across the network... individually, in groups, simultaneously, sequentially or according to a defined schedule. Monitoring a system or device via a Ping Object? Use the 'Reboot Action' to restore the service being monitored if/when it stops responding.
- **Execute Unix / Linux Commands.** When used with Device ManageR, this plugin will allow users to execute Unix/Linux commands when alerts are detected. This action will be able to perform the configured command on the target system by connecting directly via Telnet.



\$225

## Plugin - Super Bundle (Shutdown, Reboot & Commands) ADM-SUPB-PAS

**BEST  
VALUE**

- **Plugin - Report Generator.** With this plugin, users can automatically generate and email reports for some or all environmental conditions within their computer rooms, data centers and other facilities. Keywords are available that allow users to insert values for the number of alerts in progress, number of alerts in a designated time period, number of devices discovered, current sensor readings and much more. An unlimited number of reports can be created, allowing users the flexibility to create different reports for different contacts, or to generate reports according to different schedules (i.e. periodic, daily, weekly or monthly report, and for one, select or all devices).
- **Plugin - Windows Bundle (Shutdown, Reboot, Log Off, Script & Audible Action).** When used with Device ManageR this plugin package allows users to shutdown, log off or reboot Windows systems remotely across the network and/or perform Windows Scripting such as the execution of Windows commands, batch files or VBScripts, when alerts are detected. Each instant of the Windows Scripting action will be able to perform one method at a time, however, there are no limits on the number of instances that can be created. Users can also use audible actions to speak alert text or play sound files over the Device ManageR host systems sound card. Perform these actions for an unlimited number of Windows systems across the network... individually, in groups, simultaneously, sequentially or according to a defined schedule. Execute interactively from anywhere via a web browser.
- **Plugin - Unix / Linux Bundle (Shutdown, Reboot & Commands).** When used with Device ManageR this plugin package will allow users to shutdown and/or reboot Unix/Linux commands remotely across the network. When an alert is detected, this action can perform a forced power-down or reboot of the target system by connecting directly to the system via Telnet. Shutdown, reboot or set commands for an unlimited number of Unix/Linux systems across the network... individually, in groups, simultaneously, sequentially or according to a defined schedule.
- **Plugin - Dial Out Bundle (GSM, Text & Voice).** When used with Device ManageR this plugin package will allow users to send out text messages via a GSM modem, use a TAP service to send out text messages, dial a phone directly and play dial tones, and/or to dial a phone directly and speak alert text as a voice message. Send messages to an unlimited number of contacts... individually, in groups, simultaneously, sequentially or according to a defined schedule.



\$475

**Plugins for AVTECH's Device *ManageR*™ application enhance the capabilities, ease-of-use and overall user experience of working with Room *Alert*® monitors.**

**Get the most out of environment monitoring with a complete solution.**

Order through your favorite reseller, direct from AVTECH or online at [EnvironmentMonitor.com](http://EnvironmentMonitor.com)

---

## How To Purchase AVTECH Products

AVTECH products are available for purchase around the world and used in 179 countries. You can purchase through your favorite reseller, direct from AVTECH, or online through our store. When ordering \* from AVTECH, we are happy to accept your organization's purchase order (PO), as well as payment via credit card or wire transfer. Most orders ship the same or next business day.

**Resellers: Order Through Your Favorite Reseller** - Ask them to contact AVTECH on your behalf. AVTECH has an established and professional network of Resellers world-wide and can set up new Resellers in minutes.

**Phone: 888.220.6700 / 401.628.1600** (9-5 EST) - Call AVTECH direct and ask to speak with a "Product Specialist". They can take your order by phone for immediate processing or provide you with an immediate PDF quote by email. If you are outside of the U.S.A. or Canada, please ask to speak with an "International Product Specialist" as they can address international shipping and customs concerns.

**Website: [EnvironmentMonitor.com](http://EnvironmentMonitor.com)** (Anytime) - Place your order online at anytime through the AVTECH store for immediate processing. International money rates are available online to view pricing and make payment in your local currency. Combination specials are available on our store.

**Email: [Orders@AVTECH.com](mailto:Orders@AVTECH.com)** (Anytime) - Send your organization's purchase order (PO), completed and scanned quote form or order instructions to AVTECH via email. We prefer to receive POs in PDF format although can accept Word and Excel formats if necessary. Other file formats are not accepted.

**Fax: 401.628.1601** (Anytime) - Send your purchase order (PO), completed quote form or order instructions to AVTECH via fax at any time. Faxes are received in a secure facility.

\* NOTE: International orders ship when payment in U.S.D. is received. Wire transfer or credit card payment is preferred. Checks must be in U.S.D., include a U.S. routing code, and drawn on a U.S. bank. Thank you.

---

## Extended Service & Support

GoToMyDevices is the primary online venue for customers working with Room Alert monitors and includes the services previously provided through our Maintenance Support & Update Service (MSUS) program. It will allow:

- AVTECH's 30 Day Satisfaction Guarantee on new purchases
- Coverage under AVTECH's hardware Limited Warranty service
- Download access to licensed firmware, software & MIBs
- Access to U.S. based technical support services
- Access to your product specialist or reseller
- Tracking of order shipments from fulfillment to delivery location
- Subscription setup and ongoing management
- Management of your contact and billing information

During your active subscription to GoToMyDevices, AVTECH will make all of the above available to the subscriber and those people they share their subscription with. However, GoToMyDevices is more than just a source for downloads, technical support and managing your account. It is AVTECH's advanced cloud solution for monitoring Room Alert devices... the world's most popular IT & facilities environment monitors. GoToMyDevices enables anyone to use Room Alert monitors, regardless of their skill level or technical capabilities. Even better, users enjoy the same look and feel from any mobile device, whether they use a phone, tablet, laptop or desktop computer. Check it out and see for yourself why many of the worlds leading corporations call it, "the best management platform of its class." GoToMyDevices allows users to monitor, alert, log, graph, view, report, manage and protect.

**Technical Support services are available 9-5 EST Monday through Friday. The best way to start a support request is by opening a ticket online at [GoToMyDevices](http://GoToMyDevices.com).**

**Cloud:** [GoToMyDevices.com](http://GoToMyDevices.com)

**Email:** [Support@AVTECH.com](mailto:Support@AVTECH.com)

**Website:** [AVTECH.com/Support](http://AVTECH.com/Support)

**Phone:** 888.220.6700 / 401.628.1600

## Contact Us

**AVTECH Software, Inc.**  
16 Cutler Street, Cutler Mill  
Warren, RI 02885-2761 USA

Sales: 888.220.6700  
Phone: 401.628.1600  
Fax: 401.628.1601

## Visit Us & Our Store

[AVTECH.com](http://AVTECH.com)  
[RoomAlert.com](http://RoomAlert.com)  
[GoToMyDevices.com](http://GoToMyDevices.com)  
[EnvironmentMonitor.com](http://EnvironmentMonitor.com)  
Most Orders Ship the Same or Next Business Day

## Trademarks

© Copyright 1988-2015  
AVTECH Software, Inc.  
All Rights Reserved Worldwide.  
AVTECH, AVTECH Software  
AVTECH.com, AVTECHSoftware.com,  
Device Manager, EnvironmentMonitor.com,  
'Environment Monitoring Made Easy!'  
GoToMyDevices.com, 'Protect Your Facility...  
Don't Wait Until It's Too Late!', Room Alert,  
RoomAlert.com, WiSH, WiSPR,  
TemPageR & TemPageR.com.

## Privacy Promise

AVTECH does not sell or share your email or other contact information, however, AVTECH uses some email marketing because our prospects and customers consider it important and convenient. When we do, AVTECH provides customers with an easy means to decline further email of that type.

## Current Versions

To confirm your organization is running current software and firmware versions or to download these versions for any licensed AVTECH product under Extended Service & Support, please visit [www.AVTECH.com](http://www.AVTECH.com) and look for the 'Current Versions' box on the 'Downloads' page.

## Tell Us Your Story

We truly want to know when we do well and when we miss expectations. Working to provide the best products and services means making changes that typically succeed and sometimes fall short. Please email us your feedback at [Feedback@AVTECH.com](mailto:Feedback@AVTECH.com). It is always appreciated. Thank you.



**AVTECH.com**

**Protect Your Facility... *Don't Wait Until It's Too Late!***