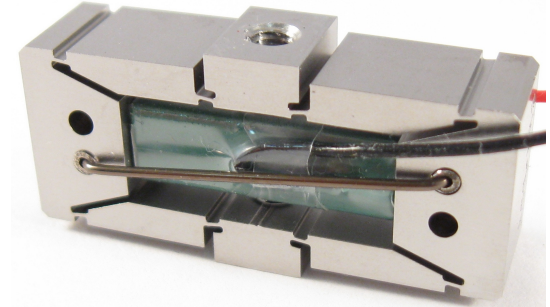


## Description

DSM's FPA is a flexure guided piezoelectric actuator useful for both dynamic and static applications. Custom mounting conditions can be integrated into the design. "E" version actuators expand when they are energized.



## Specifications

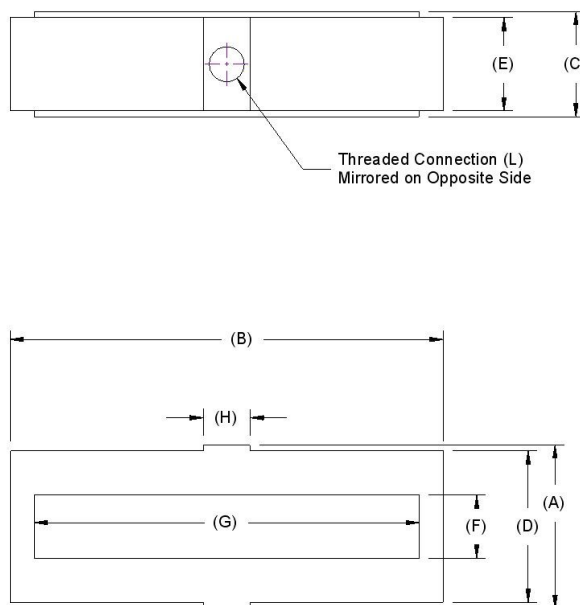
		Tolerance
Open-loop Travel ( $\mu\text{m}$ ):	200	$\pm 10\%$
Operating Voltage (V):	-30 to +150	
Stiffness in motion direction ( $\text{N}/\mu\text{m}$ ):	0.48	$\pm 10\%$
Unloaded resonant frequency (Hz):	690	
Blocking Force (N):	96	$\pm 10\%$
Capacitance ( $\mu\text{F}$ ):	1.80	Max
Material:	17-4 PH Stainless Steel	
Mass (g):	25	$\pm 5\%$

## Options

(Contact DSM for current option pricing)

- Vacuum compatibility
- Mounting holes: Tapped 1#2 or other custom
- Connectors: Custom wire lengths and connectors available for your project
- Non-Magnetic compatibility

## Geometry



	(mm)	(in)
Dim A:	15	0.6
Dim B:	32	1.3
Dim C:	10	0.4
Dim D:	13	0.5
Dim E:	8	0.3
Dim F:	4.8	0.2
Dim G:	25.8	1
Dim H:	6	0.2
Dim I:		
Dim J:		
Dim K:		
Dim L :	1_M3x0.5 on center	