



MV Christina E

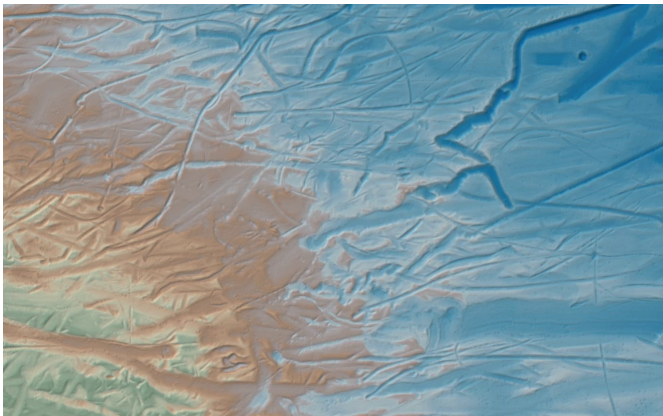
Multi-role DP Survey Vessel



Vessel Synopsis

Throughout 2019, this multi-purpose vessel has proven to be a highly capable site survey asset. With a maximum transit speed of 17 knots and a draft of up to 8 metres, the 80 metre long, 16 meter wide vessel is equipped with a DP system, Kongsberg HiPAP 501 and a hydraulic drop keel system designed to house hydroacoustic instruments. This makes her an ideal platform for geophysical, geotechnical, environmental and ROV surveys.

Christina E was designed utilising urea catalysts to generate the lowest possible environmental emissions, reducing fuel consumption. The vessel also places emphasis on the safety and comfort of its crew. These efforts were recognised when Ervik & Sævik received the Directorate of Fisheries' Environmental Award in 2012.



EM2040 MBES Data example

Vessel Specifications

General

Name:	Christina E
Classification	DNV +1 A1, ICE-C MV, Eo, AUT, (DP1)
Owner:	Ervik & Sævik
Build Date:	2011
Flag State:	Norway
MMSI No.:	257032500
Call Sign:	3YVG
IMO No.:	9554573



MV Christina E

Dimensions

LOA:	80.4 m
Beam:	16.6 m
Max Draught:	8.2 m
Tonnage:	3623t

Accommodation

Cabins:	34 persons (6 single, 14 double)
Recreation:	TV lounge and gymnasium

Survey Equipment Specifications

DGNSS Positioning:	C-Nav GNSS, dual band (iNAV)
Subsea Positioning:	Kongsberg HiPAP 501
MRU:	Kongsberg Seapath/MRU5/MGC
MBES:	Kongsberg EM2040
SVP:	Saiv SD204 or Valeport Midas SVX2
SSS / SBP:	Edgetech 2000DSS combined
SBP:	Innomar SES-2000 medium Sercel 10cu in mini air gun
Mini Streamer:	Teledyne 170m 48 channel (3.125 group)
Main source:	150cu Sercel GI-Gun
Recording System:	Sercel Seal
Streamer:	Sercel Seal ALS digital streamer (12.5m group)
Geotechnical:	Datem Neptune 5000 CPT, geo marine vibrocorer, piston corer and box corer - mobilised on request
Environmental:	Drop down camera, ROV video and Van Veen grab sampler - mobilised on request
ROV capability:	Light work class or observation ROV options - mobilised on request

NORWAY

iSURVEY Group AS
iSURVEY AS
Billingstadsletta 14
NO-1396 Billingstad
Norway

+47 4541 4100
norway@isurvey-group.com

sales@isurvey-group.com

UNITED KINGDOM

iSURVEY Offshore Limited
Unit 7, Kingshill Park
Venture Drive, Westhill
Aberdeenshire, AB32 6FL

+44 (0)1224 418210
uk@isurvey-group.com

SINGAPORE

iSURVEY Pte Ltd
22 Pandan Road
Singapore 609274

+65 6513 0589
singapore@isurvey-group.com

www.isurvey-group.com

