



WILLOW COURT  
APARTMENTS





# WELCOME TO WILLOW COURT AT CAMPION GARDENS RETIREMENT VILLAGE

Here's what you could enjoy in the years ahead, if you choose to make your home at Willow Court.

**'LIFE'S JUST BEGINNING – AGAIN!'**

TO VIEW PLEASE CALL FREEPHONE 0808 100 35 45





# LIVING LONGER, LIVING HEALTHIER LIVING HAPPIER

The older population is increasing, living longer and healthier lives. Planning for the future is something we are used to doing, whether building a career or bringing up a family, but giving thought to our well-being later in life can be a sensitive issue. Taking steps now can help to keep control over choices that may need to be made in the future.



WILLOW COURT  
APARTMENTS



‘IT NOT ONLY  
EXCEEDED OUR  
EXPECTATIONS—  
IT EXCEEDED OUR  
IMAGINATION’

## AN EXCLUSIVE VILLAGE DEVELOPMENT...

Campion Gardens retirement village is a dream location with over six glorious acres of creative landscaping. The apartments facade of granite brick and brightly painted render boasts full height windows and decorative balustrading from which homeowners can look out over uninterrupted country and sea views.

Willow Court could so easily feature in an issue of homes and Gardens magazine.

Home owners can experience an enriched lifestyle as the many village amenities makes leisure time immensely enjoyable.





## ...IN A LOVELY PART OF THE COUNTRY

Swansea, with its industrial heritage, is now a major metropolitan centre that retains its charm.

Campion Gardens is just 5 miles away, and less than 2 miles from the picturesque old fishing village of Mumbles. It is literally at the gateway to the Gower peninsular, and first in the UK designated as an area of outstanding natural beauty. The quaint hamlets of Murton and Bishopston are on the doorstep, with shops, a local post office, churches, a surgery, pharmacy and a few public houses with restaurants. It is an idyllic rural setting yet enjoying excellent transport links.





## STYLISH INTERIOR PERFECTION COMBINED WITH PRACTICAL LIVING

The apartments superb aesthetic detailing is the summit of residential style and will satisfy the discerning purchaser. The fully fitted kitchens are custom designed from a range of contemporary and traditional finishes, incorporating the best brushed steel appliances, built in convenient access oven, easy clean ceramic hob, integrated fridge, freezer and washer dryer. With soft down lighting it is warm and welcoming, as is the dining area, providing an ambiance that makes eating in as memorable as eating out.

Bathrooms are large and individually created to include attractive chrome finish taps and quality continental

tiling. Although designed for pampering and relaxing, they are also highly functional and can incorporate easy access shower or bath with other equipment which might be necessary. For ultimate protection we have also fitted anti-scalding safety devices.

All the apartments are spacious, light and airy and can be personalised to your taste. You can select from a wide portfolio of furnishings and fittings with some optional extras such as choice of wallpaper, floor coverings, coving and feature fireplace. Technology can enhance your living experience at Willow Court, as electronic living aids can be added at any time.



Centrally managed fire detection devices are fitted in individual flats besides communal areas. Personal security is also high on the agenda, with a door spy hole and security alarm system to each apartment. Protections for the whole village include CCTV cameras and lighting throughout the grounds. The audio and video entry system enables you to identify visitors on the telephone or visually via your TV screen before using the cordless handset to release and allow entry.

State of the art entertainment wiring has been laid to lounges and bedrooms where there is a connection for FM, terrestrial television and sky satellite digi-plus for easy recording. We even have our own in house TV and radio channel and included in its schedule is our magazine programme, "The Village Voice".

Telephone points have been fitted throughout with cat five cabling which allows for ISDN broadband Internet connection and the capacity to introduce health care support technology including loop systems for the hard of hearing. The sophisticated telephone system permits complimentary automatic dialling for all hotel

departments, such as room service and to friends in other apartments.

- There is ease of access by merely presenting your key fob at the entrance nearest your apartment and you may do so again to unlock your own apartment door. Passageway doors will automatically detect your presence and open to allow you free passage. It's very handy for when you bring in the shopping unless you would like the concierge to do it for you.
- Spacious lifts are located close by the apartment. You only have to pass no more than three apartments before you get to your own. It's certainly not a concrete jungle.
- You can be assured of peace and quiet as apartments comply with all the latest regulations for soundproofing.
- The apartments have been carefully designed and constructed to the highest standards backed by a Zurich buildings insurance warranty to protect your investment.





## THE GREAT OUTDOORS

The grounds are in a class of their own. With over a mile of easily navigated walkways you can reach a succession of enchanting destinations. The formal courtyard garden with its centrepiece ornamental olive tree, topiary and bedding plants is a display of abundant colour.

There is the outdoor terrace bar and cafe to linger and admire the elegant water feature. Be a naturalist at life's journey Garden, with its birdhouse, and a few furry friends.

There is a sanctuary garden for peace and reflection, but when your mood changes, join friends outside at the Pavilion ice cream parlour and barbecue brasserie.

For worship and private prayer there is an open air chapel. Country folk can explore via the attractive woodland walk reaching the Marsh pond providing a delightfully tranquil setting.





In the sun worshippers Garden you can soak up the rays, or take your green fingers on to the cottage farm house garden with its vegetable patch and herbs. For out door activity there is a putting green, croquet lawn, boule, bowling and giant chess. If you're not taking part seating for spectators is ample. The children's play area is for our little visitors.

A short walk to the far side of the village will bring you to the sculpture garden, an art display in itself. An interesting place to take a wander is the Roman garden which houses its very own forum pillars. From there, stroll through the arboretum adorned with colourful climbers

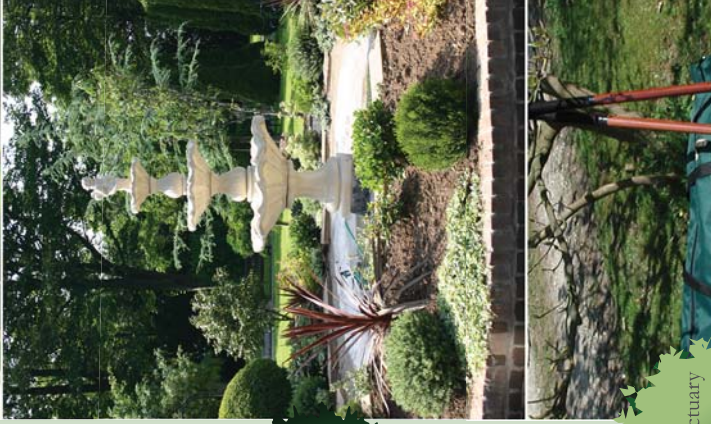
Surely there can be little to compare.

# 'FROM PASTURE TO PARADISE'

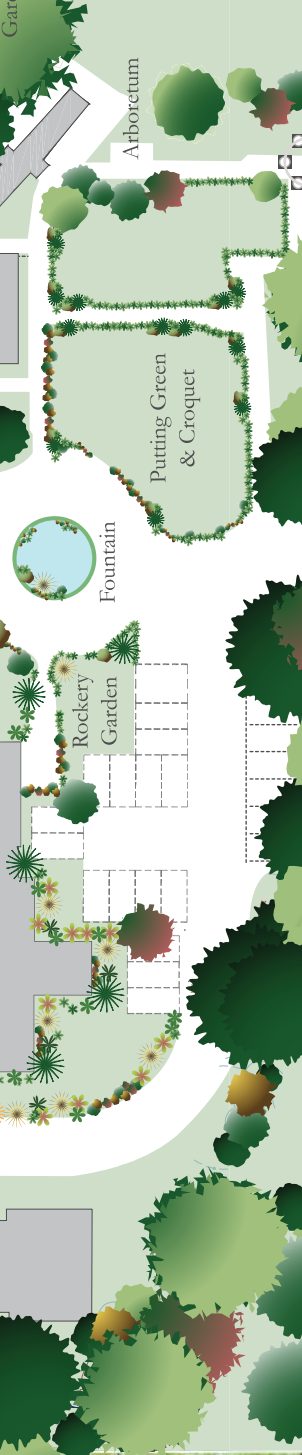




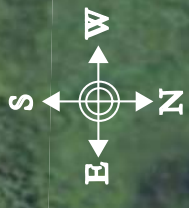
**WILLOW COURT**  
 CAMPION GARDENS RETIREMENT VILLAGE







# SITE PLAN



*Swansea City Centre*



*Swansea Bay Marina*



*Clyne Common*



*Mumbles*



*Gower*







## THE VILLAGE WITH A SENSE OF COMMUNITY

There's a true village feel with a sense of welcome and neighborhood, not surprising when you consider the array of communal facilities providing the perfect environment to relax or meet friends and entertain guests.

As you step into the spectacular Willow Court foyer you will be greeted by reception staff or concierge, just part of our highly professional team available around the clock to respond to your wishes.

Memoirs is a most comfortable coffee lounge and cocktail bar with interesting literature about the rich and famous. It boasts an extensive menu, an exciting alcohol list, with some electrifying cocktails. Here you will discover a wide range of teas and coffees along with bakery and patisserie products to delight. According to

James Bond, "afternoon tea is Britain's one indisputable contribution to Western civilization". The terrace is an informal cafe for a snack and a cuppa. It is adjacent our restaurant which caters in style. The owner a while back established a venue in the mumbles gaining two AA rosettes and was voted best new restaurant in Wales at the Welsh food and drinks awards. This expertise is replicated here at Willow Court, where both uncomplicated and adventurous menus stand side-by-side. Culinary events are held including gourmet evenings and international tasters. If there is such a thing as sophisticated basics this restaurant has it.

The private guest dining room is also available to you to celebrate special occasions, enjoying a lavish dinner or to entertain friends and family.





Movies are screened and entertainment productions take place on the Equinox stage and range from the amateur to the professional. There is a comprehensive programme of events, and our very own host organiser will ensure that you are kept amused. Trips and excursions to attractions far and near feature regularly.

C.A.M.E.O is our social group and stands for “come and meet each other”. It is simply that. There are lots of activities you can participate in, including cards, bridge, chess, arts and crafts, a game of pool and table tennis. We even have a poker and roulette table. The large screen TV shows programmes of special events including sports fixtures.

The list is simply endless, and, as part of our democratic residents group you will have a say in what should be provided.

At the library you can catch up on the latest news from complimentary newspapers and magazines, borrow a book, or do some Internet surfing. If you’re new to computers, don’t worry, we are committed to life long learning at Campion gardens, and we have arranged a number of courses, interesting talks and open discussion groups to keep those little grey cells active!

For those with spiritual needs there is Nazareth Chapel run by visiting clergy. At the village we try to support religious diversity.



## A MEANINGFUL LIFESTYLE CHOICE

Life can be as you wish at Willow Court, getting up at whatever time you choose and with what ever assistance you may need. You can make your own breakfast, ring down for room service or be waited on at the restaurant. You can buy the morning newspaper in person from the shop or have it delivered.

During the morning, enjoy tea or coffee with friends, and, weather permitting, take a walk around the gardens. Have a snack lunch at the cafe or the full works in the restaurant – “Now That’s Lifestyle”.

All the services at Willow Court are provided by a highly skilled, well trained and committed team. Campion Gardens retirement village is a family

business with over 20 years experience at the forefront in its field.

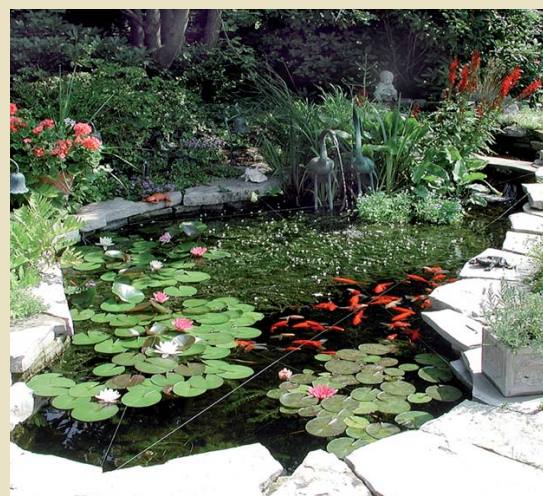
At Willow Court, the future is refreshing and exciting – “The lifestyle you desire is the lifestyle you deserve”.

### THE FUTURE – AN OASIS

To come is a hydrotherapy pool plus a swimming pool and a leisure centre with a health and juice bar.

The Village will be ever developing and all home owners have a say in what happens. It’s democratic, it’s vibrant.





## VIBRANT VILLAGE

- General Store
- Beauty Salon
- Restaurant
- Coffee lounge/Cocktail Bar
- Terrace Café
- Pavilion Brassiere
- Cinema/Theatre
- Arts & Crafts Centre
- Library/Guest Dining Room
- Clinic/Surgery
- Therapy Centre
- Hotel Guest Suite
- Chapel

## LAVISH PARKLAND

- 6 Glorious Acres
- 10 Themed Gardens
- 5 Activity Areas
- 1 Mile of Walkways
- 3 Water Features

**All this surrounds superb luxury 1 & 2 bedroom apartments.**

**All in all, home comforts with 5 star hotel services.**

‘YOU DON’T  
JUST LIVE  
HERE—  
YOU FEEL A  
SENSE OF  
BELONGING’



‘WE TAKE  
YOUR  
HEALTH  
TO HEART’

## HEALTH, CARE...

At the Phoenix health club and clinic you can enjoy a whole range of enticing treatments and therapies, including several kinds of massage. You can use the gym equipment to get your cardiovascular system going and help keep yourself active.

At the other end of the scale there is a sensory and relaxation zone, where soft lighting and gentle music will allow you to drift away, before re-entering the world refreshed.

On the subject of health, surgeries are held for visiting medical professionals such as the doctor, consultant, physiotherapist, dentist, optician, community nurse and other complementary Practitioners.

A package of care support services can be tailored to meet individual social and physical needs. Together we can create and regularly update your personal care and service plan. The well-being package, with its regular health and fitness checks, can be extended to cover lower level to extensive needs and includes services such as medication administered by our qualified nurses.





‘MINE IS A WORLD  
WHERE THE  
TEDIOUS LITTLE  
CHORES ARE DONE  
FOR YOU’

## ...AND SUPPORT

- Home Dining Delivery
- Hotel Style Room Service
- Laundry, Cleaning & Repair
- House keeping
- Refuse Collection
- Shopping To Your Order
- Errands & Escorts
- Personal Care
- Clinical & Nursing Services





‘A PROJECT THAT TRANSFORMS LIVES CAN’T FAIL TO ATTRACT MEDIA ATTENTION’

## SOUND AFFORDABLE INVESTMENT

Our costs and charges are scaled to fit in with your personal financial circumstances making village life truly affordable.

Every one's position is different, so we can offer joint ownership schemes to facilitate purchase and to meet everyday costs we can operate a “lifestyle living fund” to take out the sting and put in the zing.

We are certain you will agree that buying an apartment in Willow Court at Campion Gardens retirement village must surely be a highly desirable option. A person's home is usually their most valuable asset, and by

buying an apartment here at Willow Court you can retain security, protect inheritance and enjoy valuable piece of mind.

Any element of financial risk can be eliminated completely with our buy back option, where we guarantee to buy back your apartment, but homeowners are always free to sell on the open market for the best possible price. We are confident that with all the added benefits, the capital value of these homes will continue to rise. The demand for this type of home ownership is set to grow significantly in the years to come, along with the increase in Britain's older population.

‘PURCHASE PACKAGES ARE AVAILABLE AS WELL AS LIFETIME LIVING FUNDS TO OFFER FINANCIAL SECURITY & ASSET PROTECTION’





WE HOPE WHAT YOU HAVE READ DEMONSTRATES HOW LIFE AT WILLOW COURT CAN BE HAPPY AND FULFILLING, MEETING ALL YOUR NEEDS AND DESIRES, NOW AND IN THE YEARS TO COME.

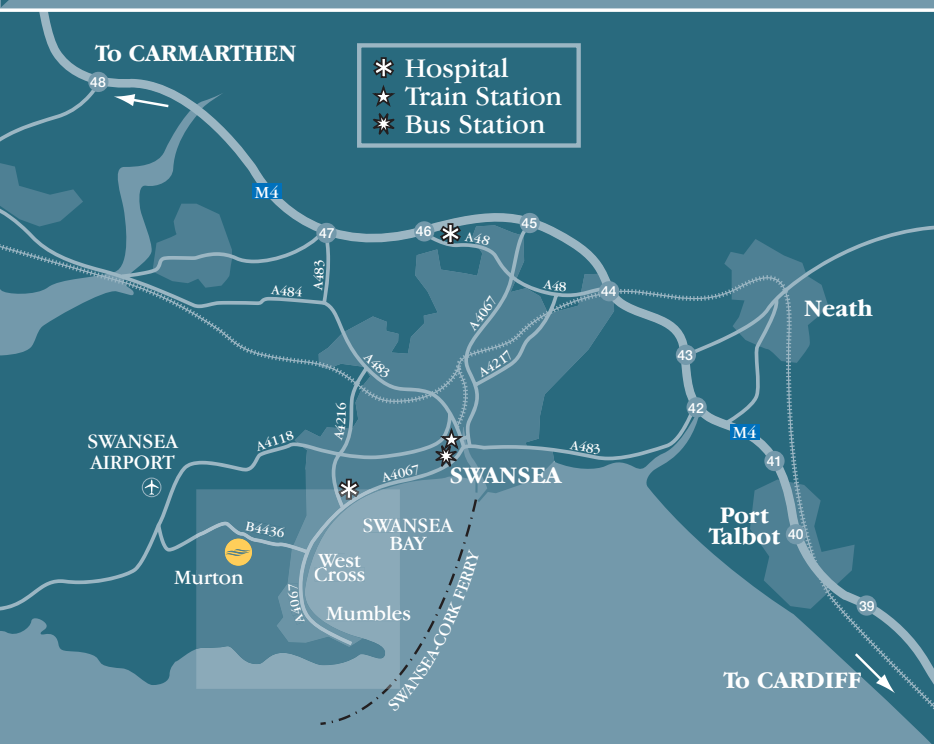
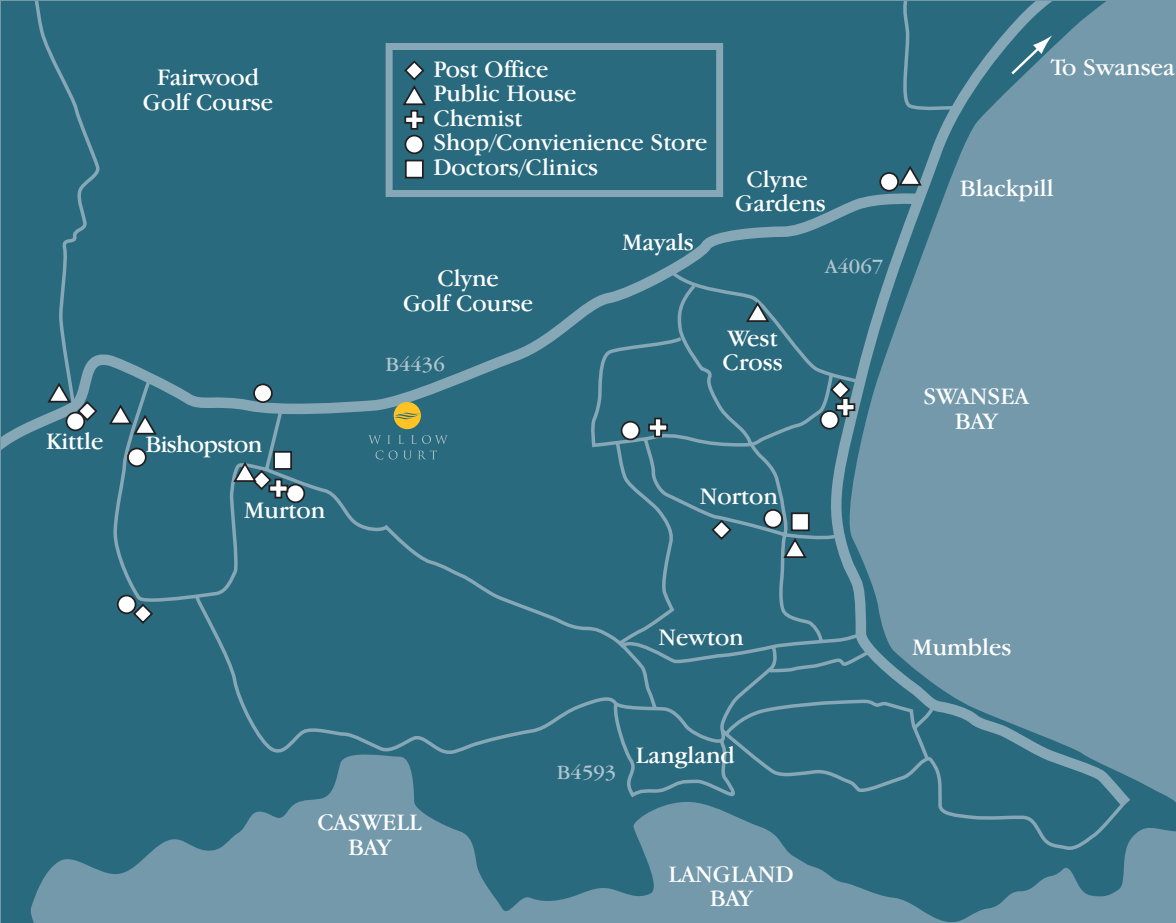
THIS PIONEERING APPROACH TO RETIREMENT LIVING OFFERS A WINNING COMBINATION OF A HIGHLY DESIRABLE LOCATION, LUXURIOUS, PRIVATELY OWNED HOMES, AND TOP QUALITY FACILITIES PROVIDING SECURITY, CARE AND TOTAL PEACE OF MIND.

CONTACT OUR SALES OFFICE TODAY TO ARRANGE A VISIT, AND START POSITIVELY PLANNING FOR YOUR FUTURE AT WILLOW COURT.

CALL FREEPHONE 0808 100 35 45  
IT COSTS NOTHING TO TAKE A LOOK!







For more information please contact  
 Marketing Department,  
 Champion Gardens Developments Ltd  
 Champion Gardens Retirement Village  
 Clyne Common, Swansea, SA3 3JB  
 Willow Court Sales Office 01792 235 339  
 or email [enquiries@willowcourt.co.uk](mailto:enquiries@willowcourt.co.uk)  
 or visit our web site  
[www.willowcourt.co.uk](http://www.willowcourt.co.uk)  
 Call Freephone 0808 100 35 45



WILLOW COURT  
 APARTMENTS





WILLOW COURT  
APARTMENTS

