

# MonitorPro

## Environmental Data Management for Australian Mining



EHS Data Ltd  
March 2019



## Key Facts

# 1000+

Trusted users worldwide

# MCerts

First monitoring software to receive this quality certification

# 22 years

Research & development

# 200+

Global mining clients

# Intelligent Innovation

Secure compliance obligations with powerful reporting

## MonitorPro at a Glance

### Environmental Intelligence to Drive Business Performance

**MonitorPro** is a world-class database management system dedicated to streamline environmental monitoring and reporting. Developed by UK based company EHS Data,

**MonitorPro** has been used in Australia by major mining companies since 2002.

During that time, continuous development using the latest technology, coupled with unparalleled customer support, has created an industry leading solution for environmental professionals.

One of the biggest challenges faced by responsible organisations is protecting the environment by reducing environmental impacts, meeting increased regulatory demands while saving on resources. Using the latest technology,

**MonitorPro** delivers this plus a comprehensive view of environmental performance across all operations.



*MonitorPro is trusted by organisations spanning five continents, with locations in: Australia, North America, Canada, South America, Europe, Asia and Africa.*



enquiries@ehsdata.com [www.ehsdata.com](http://www.ehsdata.com)





# Why the need for Environmental Monitoring in Australian Mining?

Increasingly, Australian mining companies recognise that careful and detailed management of their environmental impacts is crucial to managing corporate risk and attracting outside investment.

In mining, as in many other industries, there are multiple key factors which drive companies to introduce a comprehensive and compelling environmental strategy. The most significant environmental impacts at different stages of the mines life are summarised in the diagram. The mining industry is committed to contributing to the sustained growth and prosperity of current and future generations through the integration of economic progress, responsible social development and effective environmental management.

by **2025**

Australia leads the world to develop standards for the transparency of environmental data.

**18,700**

Environmental scientists employed in Australia.

**7.6%**

Total of Australian environmental scientists who work within the mining industry.



enquiries@ehsdata.com www.ehsdata.com

## Permits

*The first and most obvious drivers are permits. These impose conditions on an operation which force it to manage its environmental impacts responsibly. There are various regulatory bodies around the world who grant permits that can be something of a minefield to navigate. But navigated it must be since no permit equates to no operation.*

## Mine Stage

### ► Exploration

Vegetation clearance; impacts on cultural heritage; ground disturbance, water management (e.g. for drilling); weed management; spills and environmental accidents; loss and damage to topsoil required for eventual rehabilitation.

### ► Construction

Land disturbance and local environment compared to baseline; ground water and surface water; dust; waste management; noise.

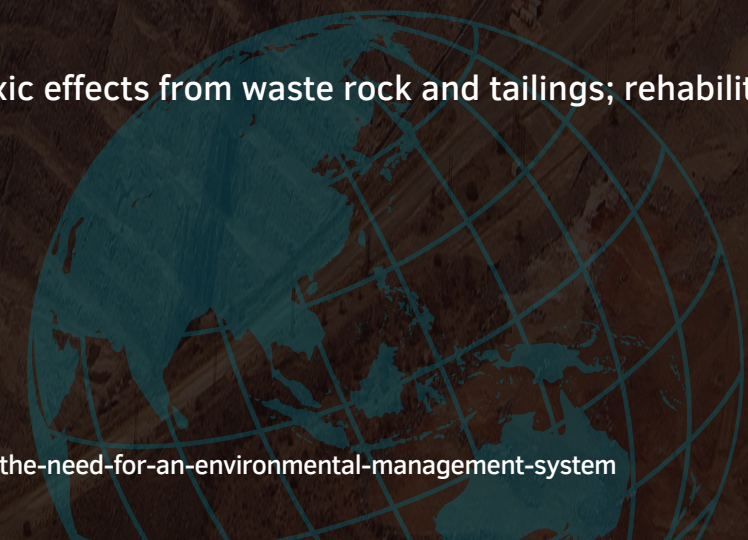
### ► Operation

Air Quality (e.g. dust, SO2 and other emissions from plant); noise; ground water and surface water impacts; water use, waste rock management and subsequent acid rock damage and erosion; chemical use; environmental incidents (e.g. spills); waste management (identification and segregation of waste streams, recycling)

### ► Close Aftercare

Seepage and toxic effects from waste rock and tailings; rehabilitation of the site.

## Significant Environmental Impacts



More Information  
[ehsdata.com/articles/the-need-for-an-environmental-management-system](https://ehsdata.com/articles/the-need-for-an-environmental-management-system)



# Shaping Environmental Compliance in Mining with MonitorPro

Seamlessly Import or Email Data Directly to MonitorPro from the Field

Powerful Satellite Imagery Technologies inc. Google & Sentinel Mapping



Areas of **MonitorPro** expertise include:

- Compliance and regulations
- Validation of data
- Visuals and dashboards
- Highly configurable
- Scheduling
- Import email data directly into MonitorPro
- Powerful satellite imagery - Google & Sentinel
- Show the different layer styles
- Key account management

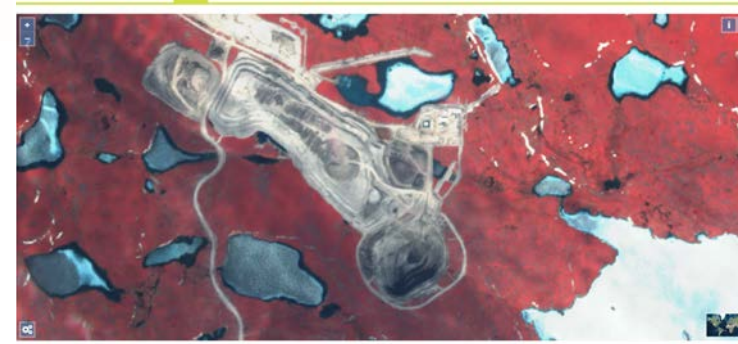
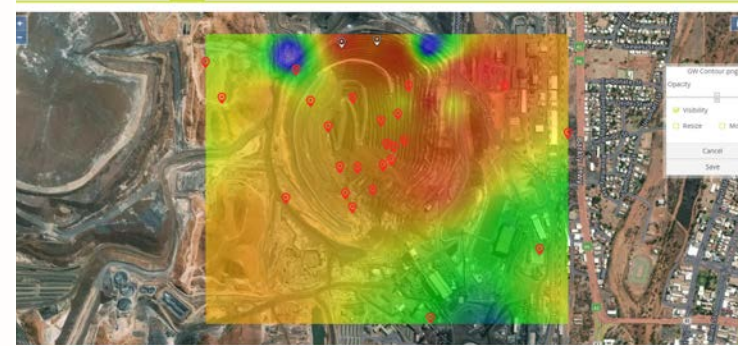
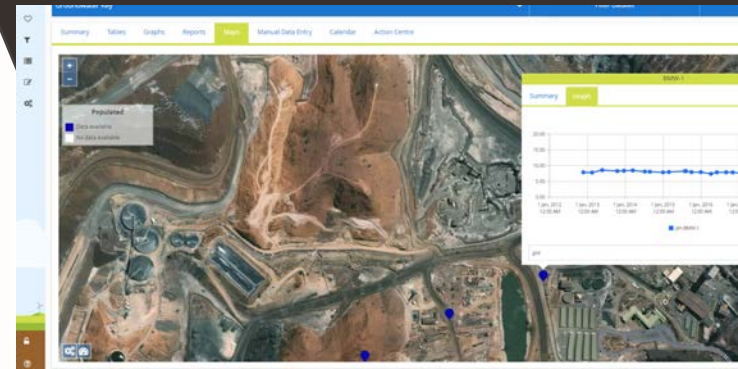
Microsoft Partner

Silver Application Development



enquiries@ehsdata.com www.ehsdata.com

Check historical vegetation events for one site...



## Using Environmental Intelligence to Drive Business Performance

EHS Data and its **MonitorPro** Database Management Systems have been being used by Natural Resource companies in Australia since 2002. During that time continuous development and additions to the suite of products and services has created an industry leading solution for environmental professionals.

The **MonitorPro** community in the area has grown to around 25 companies involved in the Natural Resources Industry and is actively used at around 60 individual working mine sites.

Over this time EHS Data has gained significant insight into the demands placed upon these organisations in managing their environmental obligations, enabling us to offer a complete and tailored service to the industry.

“Several of our former employees have already stated that they miss using MonitorPro, as they realise how much easier it made their life. They wish their new employer would make the investment.”

Environmental Manager - Australian Mining Client



enquiries@ehsdata.com www.ehsdata.com

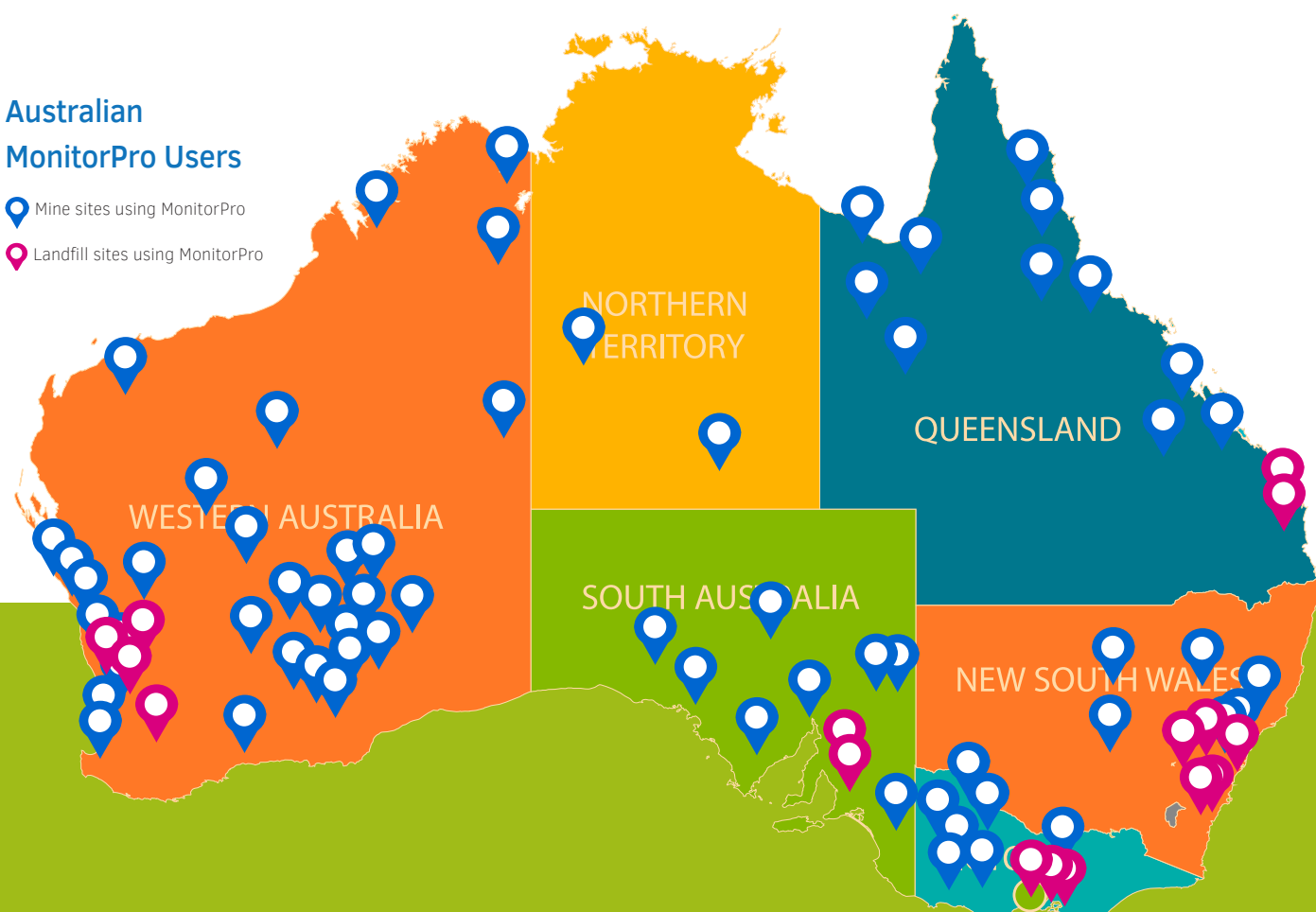
# Helping Australian clients meet their Environmental Objectives

With trusted, flexible solutions developed around the demands of mining professionals in Australia, our team will have the right solution for you. Over the years we've worked on many projects saving clients time, saving them money, simplifying their reporting and providing solutions to keep their data secure and defensible.

Working alongside some of the biggest corporate enterprises in Australian mining, providing the best solution to manage their environmental accounting, **MonitorPro** is a comprehensive environmental accounting process, which is highly configurable with incredible flexibility and scalability

## Australian MonitorPro Users

-  Mine sites using MonitorPro
-  Landfill sites using MonitorPro



### Head office - UK

t: +44 845 388 2458

e: [enquiries@ehsdata.com](mailto:enquiries@ehsdata.com)

[ehsdata.com](http://ehsdata.com)

### Australia office

t: +61 (0) 8 6102 0038

e: [australasia@ehsdata.com](mailto:australasia@ehsdata.com)

[ehsdata.com](http://ehsdata.com)



[enquiries@ehsdata.com](mailto:enquiries@ehsdata.com)

[www.ehsdata.com](http://www.ehsdata.com)