

# The Key

大宅

SELECT DELUXE HOMES

Volume 166 | JANUARY/FEBRUARY 2019

**Spotlight:**  
Majestic House  
尊貴洋房

**Feature:**  
Outdoor Furnitures



LANDSCOPE

CHRISTIE'S  
INTERNATIONAL REAL ESTATE

領域佳士得國際地產





## Prestigious Masterpiece 傲視同儕

For those who seek an idiosyncratic living environment, this rare gem hidden in the city is impossible to miss. Measuring a total saleable area of 3,601 s.f., the four-storey single house consists of six bedrooms with five en suites, a combined living and dining room separated by a sculptural screen, three balconies, five bathrooms, a powder room, a lush garden of 1,143 s.f. replete with mature trees, a roof, three maid's rooms, a utility room, a family room and a double garage. Highlights of the living area are panelled ceilings, floor-to-ceiling black lattice windows, luscious marble and opulent textures. The dining area is equally magnificent - complete with skylight and a palatial crystal chandelier hung above the dining table.

想尋找有個性的生活空間，這間城中難求的特色單位不容錯過。這間坐落在薄扶林罕有特色的四層高獨立屋，實用面積高達3,601平方呎，設有六間睡房，當中五間均為套房、以雕塑風格屏風區分的相連客飯廳、三個露台、五間浴室、一間化妝間、客廳、1,143平方呎翠綠園林私家花園、天台、三間家傭房、一間多用途室、一間家庭廳及兩個車庫。單位特色包括精緻修飾的天花、黑框格子落地玻璃窗、高貴的雲石和華麗質感的用料。飯廳的上方更以大型天窗和巨型水晶吊燈點綴，貴氣十足。

Sold via company shares transfer  
可以公司轉讓股份形式買賣



### Extravagant single house in Pokfulam

薄扶林奢華獨立洋房

**6 bed, 5 bath, 1 powder room, 1,143 s.f. garden, 1 garage**

Saleable 實用 3,601 s.f.

Sale 售 \$268,000,000

Inquiries 查詢 9871 6828 Louis Wong 黃先生  
9011 5499 Yuky Chung 鍾小姐

Webpage No. 網頁編號 128324







## Avail the outdoors 戶外美景

Though the cold days of winter are drawing in, a lovely balcony or a private rooftop are easy retreats for one to enjoy outdoor living. The ideal outdoor furniture to complement these spaces is manufactured using marine grade materials which are capable of withstanding temperature fluctuations, salt corrosion, wind, and rain.

Given that Hong Kong's unforgivingly humid spring and summer are not that far off, an imperative question is how one can enjoy outdoor living in a cost-effective way. Homeowners can opt for an energy-saving reverse cycle air conditioning system to keep their home warm in winter, while the cooling options offer relief in summer.

There are also easy ways to make outdoor living pleasant - for instance, with the simple addition of woolen throws or cushions in fluffy and tactile fabrics. And on crisp winter nights, you and your guests can enjoy a party around the warmth of a barbecue!

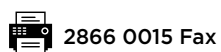
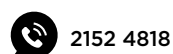
冬日來臨，能在私家露台及天台享受戶外景色，實屬賞心樂事。理想的戶外傢具，應能適應溫度變化及抵禦因風、雨或海水而出現的鏽蝕。香港的冬天並不漫長，濕熱難耐的春天及夏天也非遙不可及，以經濟實惠的方式享受戶外風光變得十分重要。戶主可採用節能冷暖氣機，在冬天為室內保持溫暖，夏季時亦可以帶來涼風。此外，要享受戶外環境亦有其他簡單方法，例如添加羊毛暖墊、有絨毛的軟墊及具質感的纖維。在寒冷的晚上，更可與親朋好友舉行派對及燒烤會，倍添暖意。

- 04 MONTHLY HIGHLIGHT**  
Colour By The River, Sai Kung  
西貢 采堤
- 06 SPOTLIGHT**  
Majestic House  
尊貴洋房
- 07** Southside & The Peak sale  
南區及山頂 出售
- 12 HIGHLIGHT**  
La Hacienda, The Peak  
山頂 加列山道
- 13** Midlevels Central & West sale  
中半山及西半山 出售



## 5 Easy ways to list your property with The Key:

5個簡單方法在《大宅》刊登您的出售 / 出租物業：



The information, text, photos, analyses and projections contained herein are provided solely for the convenience of prospective clients and no warranty or representation as to their accuracy, correctness or completeness is made by Landscape Christie's International Real Estate, Landscape Surveyors Limited, Landscape Realty Limited or the owners, none of whom shall have any liability or obligation with respect thereto. Interested parties should rely on their own investigations, interpretations and analyses in connection with the purchase or letting thereof.

Information has been provided to us by sources deemed reliable, but no warranty or representation is made as to its accuracy, correctness or completeness. These offerings are made subject to contract, correction of errors, omissions, prior sale or lease, change of price or terms or withdrawal from the market without notice. The contents of The Key are for reference only and do not constitute all or any part of a contract. Copyright 2019 Each Office is Independently Owned and Operated

- 17** Midlevels East & Happy Valley sale  
東半山及跑馬地 出售
  
- 18 HIGHLIGHT**  
21 Shek O Headland,  
Shek O  
石澳 石澳山仔21號
  
- 22 FEATURE**  
Outdoor Furnitures
  
- 24** Lease  
出租
  
- 27 HIGHLIGHT**  
Celestial Garden,  
Repulse Bay  
淺水灣 詩禮花園
  
- 29** U.K. Properties  
英國物業
  
- 32** Japanese Properties  
日本物業



## Did You Know



We list your homes as videos online for **FREE** on our page?

See it on Facebook at:

Landscape Christie's  
International Real Estate



領域佳士得國際地產  
微信號



關注更多  
探索更多

Follow Us on  
WeChat

landscapehk



Published and distributed by



Landscape Christie's International Real Estate C-018733

Tel: +852 2866 0022 Fax: +852 2866 0015

Email: info@landscape.com

Website: www.landscape.com

Address: Units 601-4, 6/F, Sino Plaza,

255-257 Gloucester Road, Causeway Bay, Hong Kong

Produced by

vision  one

Vision One Hong Kong Ltd

Tel: +852 2856 3543 Fax: +852 3105 9782

Email: info@visiononehk.com

Website: www.visiononehk.com

Unit 03, 2/F, Block B, Hi-Tech Industrial Centre,

491-501 Castle Peak Road, Tsuen Wan, N.T., Hong Kong

SCAN HERE  
TO SUBSCRIBE  
ONLINE







Boss Design Ltd.  
www.boss-interiors.com.hk

*design + build*



📍 Shop 44, G/F, Homewrold, Site 12, Whampoa Garden, Hunghom, KLN.  
☎️ +852-2345 6773 📠 +852-2345 6938 ✉️ info@boss-interiors.com.hk



REA INTERIOR DESIGN AWARDS 2018  
REAGroup







## A tranquil yet lush haven

### 隱居寧靜



**Colour By The River** 采堤  
500 Nam Wai, Sai Kung  
西貢 南圍500號  
**3 bed, 2.5 bath,**  
**734 s.f. roof & 2,181 s.f. garden,**  
**1 garage (2 car parks)**  
Saleable 實用 2,653 s.f.  
Sale 售 \$68,000,000  
Inquiries 查詢  
9319 0605 May Lee 李小姐  
Webpage No. 網頁編號 190395

Can be sold via company  
shares transfer  
可以公司轉讓股份形式買賣

Sai Kung has long been renowned as an area where residents can enjoy a pampered lifestyle in expansive homes set amid lush green surroundings. Here in Nam Wai, Colour By The River is a prime example of these standards.

Stretching across 2,653 s.f. (saleable area), the greatest attraction of the residence is the layout itself. Completed in 2008, the detached house offers a living room where residents can enjoy sweeping views of the hills provided by the floor-to-ceiling windows. On the roof spanning 734 s.f., residents can enjoy the greenery and a partial sea view – a luxury in this city. The spacious living room is large enough to accommodate ample furniture, making it a great area for rest and relaxation.

Thanks to its high efficiency ratio, the detached house has much more usable space

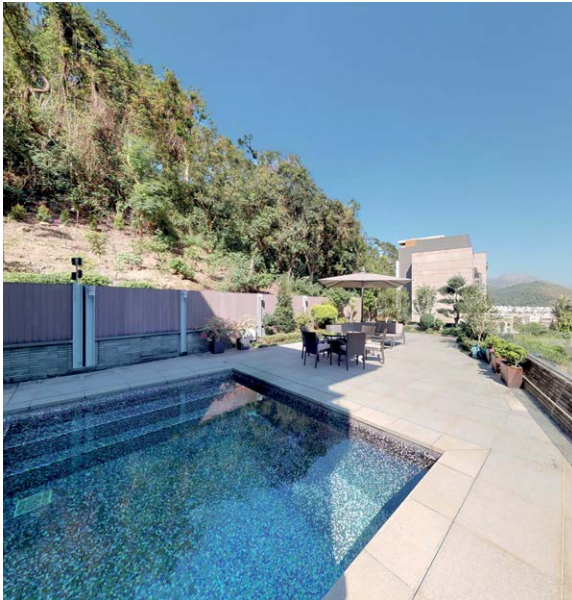
compared to new developments of the city, with the capacious kitchen, bedrooms, dining and living space ensuring that this home will never feel cluttered.

The warm wood flooring in the dining room and bedrooms offer a welcoming feel, and a touch of elegance is added with the beautiful marble floor and a number of tailor-made pieces of furniture spread across the residence.

In all, the residence encompasses three bedrooms (including one ensuite), two-and-a-half bathrooms, a separated living and dining room, a roof, a maid's room, a balcony, and a garage (2 car parks), as well as a private garden and swimming pool.

The property is available for sale at HK\$68 million. Colour By The River is well-served by public transport, offering easy access to the city.





**西**貢向來以舒適寬闊的生活空間，以及綠樹環抱的環境而聞名。西貢南圍的采堤絕對是享受奢閒之樂的生活典範。

此洋房實用面積達2,653平方呎，間隔佈局井井有條，實屬一大吸引之處。這洋房項目於2008年落成，客廳設落地玻璃窗，飽覽遼闊翠綠山景。其中734平方呎天台的景色尤其美麗，住戶不但坐享綠樹環抱，更可眺望部分海景，矜罕珍貴。此外，寬敞的客廳能容納眾多優雅傢具，令客廳成為舒適的安樂窩。

洋房實用率高，擁有充裕的室內可用空間及貯物空間。至於偌大的廚房、睡房、客廳及飯廳，則可進一步加強室內的空間感。

飯廳及睡房的實木地板，予人暖意柔和之感。另外，洋房的大理石地板及特製的傢具，令居室更添細膩高貴的奢華格調。

整間大宅有三間房間，其中一間是套房，另有兩間半浴室、獨立的客廳及飯廳，一個天台、一間家傭房、一個露台、一個車庫（可容納兩輛車），私家花園以及私家游泳池。

洋房目前以6,800萬港元出售。采堤附近有公共交通工具連接，方便往返市區。





## The Redhill Peninsula

大潭 紅山半島

18 Pak Pat Shan Road

4 bed, 3.5 bath, 756 s.f. garden, 292 s.f. roof, 1 garage

Warm and spacious sea view townhouse ideal for family  
偌大溫馨海景洋房，適合家庭

Saleable 實用 2,836 s.f.

Sale 售 \$75,000,000

Inquiries 查詢 9648 6082 Christine Chong 莊小姐

Webpage No. 網頁編號 33832



Can be sold via company shares transfer  
可以公司轉讓股份形式買賣



## Elegant townhouse in Chung Hom Kok

春坎角優雅洋房

3 bed, 2.5 bath, 435 s.f. terrace, 2 car parks

Fantastic sea view townhouse with generous garden terrace in  
exclusive estate

迷人海景洋房，設偌大花園平台，位處尊貴住宅項目

Saleable 實用 2,503 s.f.

Sale 售 \$190,000,000

Inquiries 查詢 6188 1398 Josephine Yuen 阮小姐

Webpage No. 網頁編號 131357



## Detached House in Stanley

赤柱獨立屋

500 s.f. garden, 2 garages

Contemporary single garden house with private pool at  
secluded location

當代時尚獨立屋，連私家游泳池，地段隱逸寧靜，可租可售

Saleable 實用 2,060 s.f.

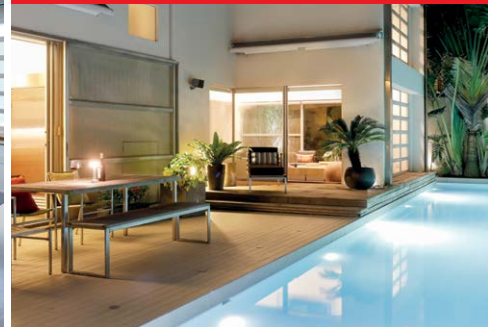
Sale 售 \$195,000,000 \$175,000,000 / Lease 租 \$230,000

Inquiries 查詢 9093 3381 Stephen Chan 陳先生

Webpage No. 網頁編號 180485



Can be sold via company shares transfer  
可以公司轉讓股份形式買賣



## Carmelia

赤柱 赤柱村道60號

60 Stanley Village Road

4 bed, 4.5 bath, 753 s.f. garden, 2 car parks

Rare colonial 4-bedroom townhouse in tranquil area with spacious  
garden and terraces

罕有英式四房洋房，地段寧靜，連寬敞花園及平台，可租可售

Saleable 實用 4,158 s.f.

Sale 售 Open Offer / Lease 租 195,000

Inquiries 查詢 9871 6828 Louis Wong 黃先生

Webpage No. 網頁編號 84478







### Cape Mansions

薄扶林 翠海別墅

56-62 Mount Davis Road

**3 bed, 2 bath, 1 car park**

Stunning sea view apartment with 3 bedrooms and spacious layout

海景壯麗三房住宅，間隔寬敞，可租可售

**Saleable** 實用 1,707 s.f.

**Sale** 售 \$45,000,000 / **Lease** 租 90,000

**Inquiries** 查詢 9803 2216 Annie Lee 李小姐

**Webpage No.** 網頁編號 90713



### Stanley Main Street

赤柱 赤柱大街

Tastefully designed 6-storey small block in the heart of Stanley town centre

樓高六層雅致裝修整幢大廈，連地舖，位處赤柱市中心

**Saleable** 實用 2,595 s.f.

**Sale** 售 \$50,000,000

**Inquiries** 查詢 9662 2199 David Lau 劉先生

**Webpage No.** 網頁編號 160260



### Ming Wai Garden

淺水灣 明慧園

45 Repulse Bay Road

**3 bed, 2 bath, 1 car park**

Well decorated 3-bedroom apartment with a car park and stunning Repulse Bay sea view  
優質裝修三房單位，連車位，飽覽優美淺水灣海景

**Saleable** 實用 1,583 s.f.

**Sale** 售 \$51,000,000

**Inquiries** 查詢 9011 5499 Yuky Chung 鍾小姐

**Webpage No.** 網頁編號 34786



### Repulse Bay Garden

淺水灣 麗景園

18-40 Bellevue Drive

**3 bed, 2 bath, 1 car park**

Nicely decorated 3-bedroom apartment with Repulse Bay beach view in sought after estate  
雅致裝修三房單位，坐擁淺水灣優美景色，位處受歡迎地段

**Saleable** 實用 2,110 s.f.

**Sale** 售 \$54,800,000

**Inquiries** 查詢 9648 6082 Christine Chong 莊小姐

**Webpage No.** 網頁編號 40179



### Overbays 淺水灣 淺水灣道71號

71 Repulse Bay Road

**4 bed, 4.5 bath,**

**878 s.f. roof, 1 garage**

Exclusive waterfront house with private lift overlooking fantastic sea view  
尊貴海濱洋房，連私家升降機，飽覽迷人海景，可租可售

**Saleable** 實用 3,871 s.f.

**Sale** 售 \$900,000,000 / **Lease** 租 \$420,000 incl.

**Inquiries** 查詢 9026 2912 Michelle Chung 鍾小姐

**Webpage No.** 網頁編號 31622



### Grosse Pointe Villa

赤柱 赤柱村道4號

4 Stanley Village Road

**4 bed, 3 bath, 2,267 s.f. roof, 2 car parks**

A timeless designer's decor family abode with a resort-feel private roof enjoying postcard sea view  
設計師裝修家庭式住宅，享度假風私家天台，眺望如畫美景

**Saleable** 實用 2,451 s.f.

**Sale** 售 \$115,000,000

**Inquiries** 查詢 9871 6828 Louis Wong 黃先生

**Webpage No.** 網頁編號 51384





## Tung Tau Wan Road

赤柱 東頭灣道

**2 bed, 2 bath, 944 s.f. terrace, 2 car parks**

Rare unique seashore low-rise apartment with private terrace and 2 car parks

罕有獨特海景單位，密度低，連私家平台及雙車位

**Saleable 實用 1,618 s.f.**

**Sale 售 \$58,000,000**

**Inquiries 查詢 9662 2199 David Lau 劉先生**

**Webpage No. 網頁編號 30890**



Can be sold via company shares transfer  
可以公司轉讓股份形式買賣



Can be sold via company shares transfer  
可以公司轉讓股份形式買賣



## Ruby Court

淺水灣 嘉麟閣

**55 South Bay Road**

**3 bed, 2.5 bath, 2 car parks**

High floor sea view apartment including 2 covered car parks with full facilities at South Bay waterfront

高層海景住宅，連兩個有蓋車位及完善設施

**Saleable 實用 1,390 s.f.**

**Sale 售 \$60,000,000**

**Inquiries 查詢 9319 0605 May Lee 李小姐**

**Webpage No. 網頁編號 4770**



## South Bay Palace

淺水灣 南灣御苑

**25-31 South Bay Close**

**4 bed, 3 bath, 1 car park**

Popular 4-bedroom flat with well received layout in tranquil location

受歡迎四房單位，間隔實用，地段清幽

**Saleable 實用 1,947 s.f.**

**Sale 售 \$60,000,000**

**Inquiries 查詢 9319 0605 May Lee 李小姐**

**Webpage No. 網頁編號 98835**



Can be sold via company shares transfer  
可以公司轉讓股份形式買賣



## Sea Cliff Mansions

淺水灣 海峰園

**19A-19D Repulse Bay Road**

**4 bed, 3 bath, 1 car park**

High-efficiency 4-bedroom apartment with fantastic sea view in tranquil location

高實用率四房單位，眺望迷人海景，地段清幽恬靜

**Saleable 實用 1,961 s.f.**

**Sale 售 \$67,800,000**

**Inquiries 查詢 9093 3381 Stephen Chan 陳先生**

**Webpage No. 網頁編號 13850**





### Scenic Villas

薄扶林 美景臺

2-28 Scenic Villa Drive

4 bed, 3 bath, 1 car park

High efficiency 4-bedroom sea view apartment with balcony at Pokfulam

高實用率四房海景單位，連露台

Saleable 實用 1,965 s.f.

Sale 售 \$39,000,000

Inquiries 查詢 9648 6082 Christine Chong 莊小姐

Webpage No. 網頁編號 49783



### Baguio Villa

薄扶林 碧瑤灣

550 & 555 Victoria Road

4 bed, 3 bath, 1 car park

Practical apartment in good condition with full facilities

裝修簇新實用住宅，設施完善

Saleable 實用 2,119 s.f.

Sale 售 \$43,000,000

Inquiries 查詢 9026 2912 Michelle Chung 鍾小姐

Webpage No. 網頁編號 130801



### Splendour Villa

淺水灣 雅景閣

10 South Bay Road

2 bed, 2 bath, 1 car park

Commodious low-rise apartment with gorgeous sea view

舒適低密度住宅，坐擁華麗海景

Saleable 實用 1,454 s.f.

Sale 售 \$60,000,000

Inquiries 查詢 9011 5499 Yuky Chung 鍾小姐

Webpage No. 網頁編號 4651



Can be sold via company shares transfer  
可以公司轉讓股份形式買賣



### Woodbury Court

薄扶林 嘉林閣

137 Pok Fu Lam Road

3 bed, 2.5 bath, 3 car parks

Large and spacious sea view duplex in serene neighbourhood

偌大寬敞海景複式單位，位處寧靜社區

Saleable 實用 2,549 s.f.

Sale 售 \$77,000,000

Inquiries 查詢 9319 0605 May Lee 李小姐

Webpage No. 網頁編號 38819





### Residence Bel-Air

薄扶林 貝沙灣

68 Bel-Air Peak Rise

4 bed, 3 bath, 1 car park

Full sea view 4-bedroom apartment with excellent clubhouse facilities

全海景四房住宅，享優質會所設施，可租可售

Saleable 實用 1,985 s.f.

Sale 售 \$84,800,000 / Lease 租 \$138,000

Inquiries 查詢 9319 0605 May Lee 李小姐

Webpage No. 網頁編號 47195



Can be sold via company shares transfer  
可以公司轉讓股份形式買賣



### The Redhill Peninsula – Waterfront H Type

大潭 紅山半島 一 臨海 H 型洋房

18 Pak Pat Shan Road

4 bed, 4 bath, 1,610 s.f. garden, 2 car parks

Rare Type H waterfront house, combined living and dining room, very high ceiling

罕有臨海H型洋房，相連客飯廳，特高樓底，可租可售

Saleable 實用 2,765 s.f.

Sale 售 \$110,000,000 / Lease 租 \$140,000

Inquiries 查詢 6188 1398 Josephine Yuen 阮小姐

Webpage No. 網頁編號 172835



### Residence Bel-Air

薄扶林 貝沙灣

Bel-Air Avenue

4 bed, 3.5 bath, 556 s.f. terrace, 1 car park

Stunning seaview duplex with private terraces in Cyberport

海景怡人複式住宅，連私家平台，可租可售

Saleable 實用 1,751 s.f.

Sale 售 \$125,000,000 / Lease 租 \$175,000

Inquiries 查詢 9319 0605 May Lee 李小姐

Webpage No. 網頁編號 100281



### Overthorpe

山頂 豐林閣

24-28 Mount Austin Road

5 bed, 1,600 s.f. garden, 1 garage (3 car parks)

Deluxe 5-bedroom townhouse with fantastic views at the Peak

山頂奢華五房洋房，眺望迷人景致

Saleable 實用 2,387 s.f.

Sale 售 \$222,000,000

Inquiries 查詢 9662 2199 David Lau 劉先生

Webpage No. 網頁編號 49716





### The Beachfront

淺水灣 壁池

7 Belleview Drive

3 bed, 3 bath, 700 s.f. terrace, 1 garage

Sought after 3-bedroom townhouse with bird's eye view of Repulse Bay Beach

受歡迎三房洋房，鳥瞰淺水灣泳灘優美景色

Saleable 實用 2,111 s.f.

Sale 售 \$130,000,000

Inquiries 查詢 9011 5499 Yuky Chung 鍾小姐

Webpage No. 網頁編號 12202



### Manderly Garden

深水灣 文禮苑

48 Deep Water Bay Road

4 bed, 3.5 bath, 1,000 s.f. roof, 1 garage

High efficiency 4-bedroom townhouse in tranquil residential area

高實用率四房洋房，位處清幽恬靜住宅區

Saleable 實用 3,160 s.f.

Sale 售 \$190,000,000

Inquiries 查詢 9026 2912 Michelle Chung 鍾小姐

Webpage No. 網頁編號 4290



### Strawberry Hill

山頂 紅莓閣

8 Plunkett's Road

3 bed, 2.5 bath, 400 s.f. garden, 2 car parks

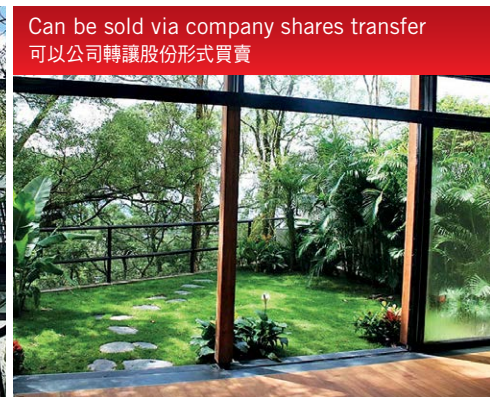
Colonial 3-bedroom townhouse in well managed estate at The Peak  
英式三房洋房，屋苑管理完善，可租可售

Saleable 實用 2,945 s.f.

Sale 售 \$195,000,000 / Lease 租 \$200,000

Inquiries 查詢 9093 3381 Stephen Chan 陳先生

Webpage No. 網頁編號 5733



Can be sold via company shares transfer  
可以公司轉讓股份形式買賣

Can be sold via company shares transfer  
可以公司轉讓股份形式買賣



### Peel Rise

山頂 貝璐道

4 bed, 4.5 bath, 1,147 s.f. garden, 1 garage

Prestigious 4-bedroom Peak house with ample open space enjoys  
spectacular views

尊貴四房山頂洋房，戶外空間充裕，享優美景色，可租可售

Saleable 實用 3,436 s.f.

Sale 售 \$268,000,000 / Lease 租 \$250,000

Inquiries 查詢 9648 6082 Christine Chong 莊小姐

Webpage No. 網頁編號 155745





## Victoria Harbour view house in The Peak

山頂維港景大屋

4 bed, 4.5 bath, 753 s.f. garden, 2 car parks

Superb house enjoying breathtaking Victoria Harbour view with private lift and huge garage for 5 to 6 cars

山頂豪華洋房，飽覽震撼維多利亞港優美海景，洋房設私家電梯及特大車庫，可泊五至六輛私家車

Saleable 實用 3,581 s.f.

Sale 售 Open Offer

Inquiries 查詢 6188 1398 Josephine Yuen 阮小姐

Webpage No. 網頁編號 159489



## Shouson Hill Road

壽山村道

5 bed, 5 bath, 2,733 s.f. garden, 4 car parks

Nicely designed house in move-in condition with private lift and 4 car parks

雅致裝修洋房，花園達2,733呎，連私家升降機及車位可泊四輛車

Saleable 實用 4,240 s.f.

Sale 售 \$488,000,000

Inquiries 查詢 6188 1398 Josephine Yuen 阮小姐

Webpage No. 網頁編號 179392



Can be sold via company shares transfer  
可以公司轉讓股份形式買賣



## Top-notch living 高尚品味

One of the most prestigious residential areas in the city, The Peak offers luxury living with impeccable views and convenience. This townhouse, spanning 2,756 s.f. (saleable area), offers unblocked full south-side sea views. It has four bedrooms including two ensembles, three bathrooms, a separated living and dining room, a terrace, a roof, a helper's quarter, a utility room, a study room, and two covered car parks.

Boasting an efficiency ratio of 86%, the tastefully decorated townhouse has excellent internal upkeep and a new fully fitted kitchen.

此洋房坐落於山頂貴重地段，景色優美之餘，不用十分鐘車程可抵達中環。這洋房實用面積達2,756平方呎，享遼闊深邃的全南區海景。洋房提供四間睡房，其中兩間為套房，另有三間浴室，獨立的客廳及飯廳，一個平台、一個天台、一間家傭房、一間多用途房、一間閱讀室、以及兩個有蓋車位。

大宅的實用率高，裝修設計品味出眾，同時保養簇新，廚房亦設備齊全。

## La Hacienda

27-33 Mount Kellett Road, The Peak

山頂 加列山道27-33號

4 bed, 3 bath, 2 car parks

Saleable 實用 2,756 s.f.

Sale 售 \$180,000,000

Inquiries 查詢 6188 1398 Josephine Yuen 阮小姐

Webpage No. 網頁編號 166226





Can be sold via company shares transfer  
可以公司轉讓股份形式買賣



### Midlevels West

西半山

Rare Grade 3 historical building  
in convenient location

罕有三級文物保護歷史建築大廈，位處便利地段

**Saleable** 實用 3,218 s.f.

**Sale** 售 \$42,000,000

**Inquiries** 查詢 9662 2199 David Lau 劉先生

**Webpage No.** 網頁編號 189236



### Beau Cloud Mansion

中半山 碧雲樓

64 Macdonnell Road

**3 bed, 2 bath, 1 car park**

Practical older-style flat for sale on convenient  
MacDonnell Road

實用英式住宅，交通便利

**Saleable** 實用 1,628 s.f.

**Sale** 售 \$42,000,000

**Inquiries** 查詢 9011 5499 Yuky Chung 鍾小姐

**Webpage No.** 網頁編號 124216



### Fairlane Tower

中半山 寶雲山莊

2B Bowen Road

**3 bed, 2 bath**

Nicely renovated 3-bedroom city view  
apartment with facilities on Bowen Road  
雅致裝修三房城市住宅，連設施，可租可售

**Saleable** 實用 1,282 s.f.

**Sale** 售 \$46,000,000 / Lease 租 \$80,000 incl.

**Inquiries** 查詢 9803 2216 Annie Lee 李小姐

**Webpage No.** 網頁編號 150691



Can be sold via company shares transfer  
可以公司轉讓股份形式買賣



### Dynasty Court

中半山 帝景園

23 Old Peak Road

**3 bed, 2 bath, 1 car park**

Nicely renovated apartment with clubhouse  
facilities in convenient location

雅致裝修住宅，享會所設施，地段優越

**Saleable** 實用 1,522 s.f.

**Sale** 售 \$58,500,000

**Inquiries** 查詢 9803 2216 Annie Lee 李小姐

**Webpage No.** 網頁編號 161772



### Tregunter Tower 2

中半山 地利根德閣 2座

14 Tregunter Path

**4 bed, 2.5 bath, 1 car park**

Well decorated 4-bedroom home with top  
notch clubhouse facilities

優質裝修四房住宅，享尊貴會所設施

**Saleable** 實用 2,330 s.f.

**Sale** 售 \$62,000,000

**Inquiries** 查詢 9803 2216 Annie Lee 李小姐

**Webpage No.** 網頁編號 160056



### 1 Robinson Road

西半山 羅便臣道1號

**4 bed, 3.5 bath, 1 car park**

Unique 4-bedroom duplex with  
sweeping city view in prime location

獨特四房複式住宅，享遼闊城市景，地段優越，  
可租可售

**Saleable** 實用 2,626 s.f.

**Sale** 售 \$76,600,000 / Lease 租 \$100,000

**Inquiries** 查詢 9648 6082 Christine Chong 莊小姐

**Webpage No.** 網頁編號 17906





### Hong Villa 中半山 峰景花園

12 Bowen Road

3 bed, 2 bath, 1 car park

One of the most prestigious areas in Mid-levels with great panoramic firework view, overlooking splendid Victoria Harbour and greenery mountains. Rare on market with a covered car park  
港島半山最尊貴顯赫地段，坐擁維港璀璨煙火全景及翠綠山巒美景，氣派懾人。市場罕有，連一個有蓋車位

Saleable 實用 1,579 s.f.

Sale 售 \$63,800,000

Inquiries 查詢 9803 2216 Annie Lee 李小姐

Webpage No. 網頁編號 6942



Can be sold via company shares transfer  
可以公司轉讓股份形式買賣



### 31 Robinson Road

西半山 羅便臣道31號

4 bed, 3 bath, 39 s.f. terrace, 1 car park

Fully furnished 4-bedroom apartment with full clubhouse facilities  
四房裝修簇新單位，享完善會所設施，可租可售

Saleable 實用 1,758 s.f.

Sale 售 \$84,000,000 / Lease 租 \$160,000

Inquiries 查詢 9319 0605 May Lee 李小姐

Webpage No. 網頁編號 117631



### Garden Terrace 2 & 3

中半山 花園臺2 & 3座

8A Old Peak Road

4 bed, 4 bath, 1 car park

Lovely 4-ensuite large apartment at popular Garden Terrace  
精品四套房偌大單位，位處受歡迎花園臺

Saleable 實用 2,580 s.f.

Sale 售 \$93,800,000

Inquiries 查詢 9803 2216 Annie Lee 李小姐

Webpage No. 網頁編號 34942



Can be sold via company shares transfer  
可以公司轉讓股份形式買賣



Can be sold via company shares transfer  
可以公司轉讓股份形式買賣



### Content Lodge

九龍塘 康定舍

140 Waterloo Road

5 bed, 3 bath, 1 car park

Unique 5-bedroom duplex with roof at prime location of Kowloon Tong  
獨特五房複式單位，連露台，位處九龍塘優越地段

Saleable 實用 3,919 s.f.

Sale 售 \$80,000,000

Inquiries 查詢 9648 6082 Christine Chong 莊小姐

Webpage No. 網頁編號 81457





### May Tower 1

中半山 梅苑一座

7 May Road

3 bed, 3.5 bath

Nicely decorated 3-ensuite duplex enjoying stunning city view in prime location

雅致裝修三套房複式單位，飽覽璀璨城市景，地段優越，可租可售

Saleable 實用 2,218 s.f.

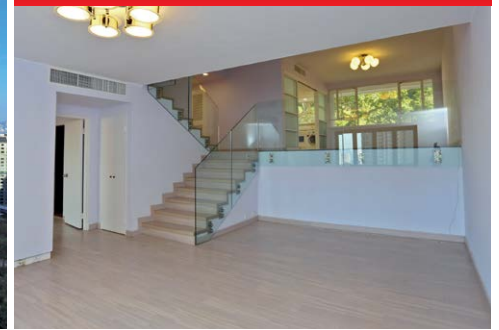
Sale 售 \$93,000,000 / Lease 租 \$120,000

Inquiries 查詢 9011 5499 Yuky Chung 鍾小姐

Webpage No. 網頁編號 5823



Can be sold via company shares transfer  
可以公司轉讓股份形式買賣



### Robnson Road Duplex

羅便臣道 複式

3 bed, 3.5 bath, 595 s.f. terrace, 2 car parks + plus

Penthouse duplex with roof terrace and two car parks enjoys sweeping harbour view, the building offers car park rental service  
頂層複式住宅，連天台及兩車位，眺望維港優美景色，大廈提供車位出租服務，供應充裕，可租可售

Saleable 實用 2,356 s.f.

Sale 售 \$130,000,000 / Lease 租 \$180,000

Inquiries 查詢 6188 1398 Josephine Yuen 阮小姐

Webpage No. 網頁編號 181612



### Convention Plaza Duplex

灣仔 會景閣複式

1 Harbour Road

4 bed, 3 bath

One of a kind duplex with tasteful decorations and stunning city view, special high ceiling

品味裝修獨特複式住宅，飽覽城市美景，極高樓底

Saleable 實用 2,794 s.f.

Sale 售 \$138,000,000

Inquiries 查詢 6188 1398 Josephine Yuen 阮小姐

Webpage No. 網頁編號 49762



Can be sold via company shares transfer  
可以公司轉讓股份形式買賣



Can be sold via company shares transfer  
可以公司轉讓股份形式買賣



### Villa Veneto

西半山 威都閣

3 Kotewall Road

6 bed, 3.5 bath, 2 car parks

Huge 6-bedroom penthouse duplex with harbour view and ample open space

偌大六房頂層複式單位，享海景，戶外空間充裕

Saleable 實用 4,057 s.f.

Sale 售 \$200,000,000

Inquiries 查詢 9093 3381 Stephen Chan 陳先生

Webpage No. 網頁編號 39145







## Ruby Court 嘉麟閣 55 South Bay Road, Repulse Bay 淺水灣 南灣道55號

Situated in a green and quiet corner of South Bay Road, Ruby Court enjoys unobstructed South Bay seaview and greenery mountain view. Spanning a saleable area of 1,390 s.f., these two premium apartments own efficient layout of dining area with fitted kitchen, three bedrooms including one ensuite, two bathrooms, powder room, maid's room and utility area respectively. Amid the well-appointed facilities, it only takes a few steps walking to the beach to enjoy sunbathing and barbecue. Enjoying such a convenient location, short driving distance can easily bring you to shops and entertainments in Repulse Bay, Stanley and Tai Tam. Residents' shuttle bus services to Central and Repulse Bay are available.

淺水灣嘉麟閣座落於茂綠寧靜的南灣道，享有清靜雅致的南灣海景及開揚山景。兩個優質單位的實用面積均為1,390平方呎，室內空間寬闊，由客廳的大玻璃窗可飽覽南灣怡人海景，飯廳及廚房間格實用，三間客房其中一間為套房、兩間浴室、客用化妝間、家傭房及工作間。不僅備有完善會所設施，數步之遙便可到泳灘享受日光浴及戶外燒烤樂，極之方便。駕車瞬間可達淺水灣，赤柱及大潭的商店及娛樂設施，住客更可享穿梭巴士服務往中環及淺水灣。



**Tower 2 Unit A 2/F**

**Tower 2 Unit B 4/F**

**3 bed, 2.5 bath, 1 car park**

**Saleable 實用 1,390 s.f.**

**Inquiries 查詢 Louis Wong 黃先生 9871 6828**

**Yuky Chung 鍾小姐 9011 5499**

**Webpage No. 網頁編號 34930**

**BY ORDER OF THE OWNER  
FOR SALE BY PUBLIC TENDER  
(UNLESS PREVIOUSLY SOLD OR WITHDRAWN)**

承業主命 公開招標出售  
(截標前售出或收回除外)

**TENDER CLOSING DATE**

**21st March 2019 (Thursday) 12:00 noon**

截標日期

2019年3月21日 (星期四) 中午十二時





Can be sold via company shares transfer  
可以公司轉讓股份形式買賣



### Butler Tower

渣甸山 柏麗園

1-5 Boyce Road

5 bed, 2 bath,

400 s.f. garden, 2 car parks

Unique 5-bedroom apartment with terrace at tranquil Jardine's Lookout

獨特五房單位，連平台，位處渣甸山寧靜地段

**Saleable** 實用 1,455 s.f.

**Sale** 售 \$55,000,000

**Inquiries** 查詢 9319 0605 May Lee 李小姐

**Webpage No.** 網頁編號 38252



### Villa Monte Rosa

東半山 玫瑰新村

41A Stubbs Road

3 bed, 2 bath, 1 car park

Large and spacious 3-bedroom older-style flat on high floor zone

偌大寬敞高層住宅，三房間隔

**Saleable** 實用 2,150 s.f.

**Sale** 售 \$55,000,000

**Inquiries** 查詢 9662 2199 David Lau 劉先生

**Webpage No.** 網頁編號 38444



### Bellevue Court

東半山 碧蕙園

41 Stubbs Road

3 bed, 3 bath, 1 car park

Rare on market colonial style flat with green and city views on Stubbs Road

罕有英式住宅，飽覽翠綠景及城市景

**Saleable** 實用 2,257 s.f.

**Sale** 售 \$60,000,000

**Inquiries** 查詢 9662 2199 David Lau 劉先生

**Webpage No.** 網頁編號 20303



Can be sold via company shares transfer  
可以公司轉讓股份形式買賣



### Broadwood Park

東半山 柏樂苑

38 Broadwood Road

3 bed, 3 bath, 2 car parks

Tastefully decorated apartment in tranquil location with harbour view

品味裝修住宅，地段清靜，享海景

**Saleable** 實用 2,414 s.f.

**Sale** 售 \$95,000,000

**Inquiries** 查詢 9093 3381 Stephen Chan 陳先生

**Webpage No.** 網頁編號 34728



### Midlevels East

東半山

Extravagant two duplex penthouses with private roof terraces overlooking Victoria Harbour (Two adjoining penthouse duplex units possible to convert into one generous duplex penthouse, subject to approval)

兩間奢華頂層複式住宅，連私家天台，俯瞰維港美景（兩個頂層複式可合併成一個偌大複式，需經批准為實）

**Saleable** 實用 Flat A: 2,599 s.f. Flat B: 2,599 s.f.

**Sale** 售 \$221,000,000 \$221,000,000

**Inquiries** 查詢 9871 6828 Louis Wong 黃先生

**Webpage No.** 網頁編號 37068





# A hermit on the peninsula

## 半島隱士

Set on Shek O Headland, this tastefully decorated house beautifully renovated townhouse offers a thoroughly modern living experience enhanced with a sublime sea view.

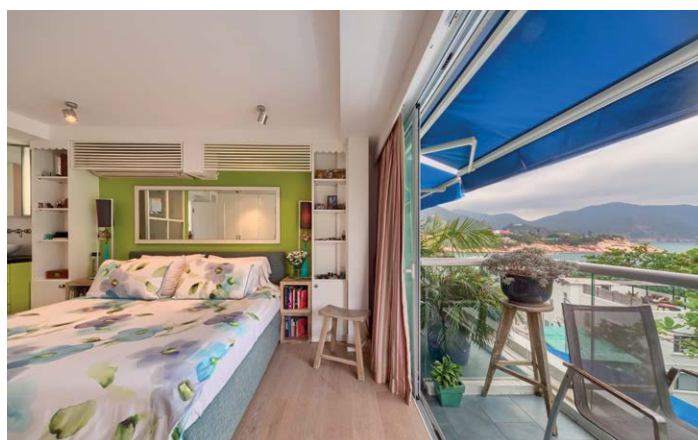
Located in a quiet enclave, this home includes a rooftop where residents can host outdoor parties and enjoy the greenery and a partial sea view. Spanning 1,204 s.f. (saleable area), the townhouse has good internal upkeep as well as a fully fitted and equipped kitchen.

Boasting three bedrooms (including one ensuite), three bathrooms, a combined living and dining room, a roof, a family room, and two balconies and a car park, the residence is in close proximity to Shek O Country and Golf Club and Shek O beach, with bus services available in the district.

此精心佈置的洋房位於石澳山仔，坐落於寧靜的半島之上，室內設計予人品味時尚的感覺之餘，優美海景更是一覽無遺。

洋房位處寧靜一隅，天台除了可以享受翠綠山景及部分海景之外，更是舉行戶外派對的好地方。洋房實用面積達1,204平方呎，內櫥保養得宜，而且廚房設備齊全。

洋房提供三間睡房，其中一間為套房，亦有三間浴室、一個相連客廳、一個天台、一個家庭廳、兩個露台及一個車位。此外，石澳高爾夫球會及沙灘亦近在咫尺，附近亦有巴士連接各區。



### 21 Shek O Headland, Shek O

石澳 石澳山仔21號

3 bed, 3 bath, 1 car park

Gross 建築 2,000 s.f.

Saleable 實用 1,204 s.f.

Sale 售 \$45,000,000

Inquiries 查詢 9093 3381 Stephen Chan 陳先生

Webpage No. 網頁編號 44338







## Seafront delight 蔚藍海岸

Situated in the tranquil setting of Redhill Peninsula, this lavish 2,876 s.f. (saleable area) townhouse offers glorious sea and mountain views, as well as four bedrooms (two ensuite), three-and-a-half bathrooms, a separate living and dining room, a family room, a balcony, a maid's room, a utility room and a garage with three car parks.

One of the greatest attractions is the lush private garden, where residents can host outdoor parties and gatherings. Kitchen is also fully-fitted and equipped. The townhouse is in move-in condition.

位於寧靜的紅山半島，這座寬敞洋房實用面積廣達2,876平方呎，坐享優美海景及山巒景。洋房設四間睡房(兩間套房)、三間半浴室、分層客廳、家庭廳、露台、家傭房、多用途房及可容納三輛車的車庫。

其中最引人入勝的賣點是鬱鬱蔥蔥的私家花園，住戶可舉辦戶外派對及聚會，盡享奢閒之樂。廚房設備亦相當齊全。洋房裝修簇新，可即時入住。

### The Redhill Peninsula 紅山半島

18 Pak Pat Shan Road, Tai Tam

大潭 白筆山道18號

4 bed, 3.5 bath, 2,002 s.f. garden, 1 garage (3 car parks)

Saleable 實用 2,876 s.f.

Lease 租 \$138,000 incl.

Inquiries 查詢 6188 1398 Josephine Yuen 阮小姐

Webpage No. 網頁編號 187638



Can be sold via company shares transfer  
可以公司轉讓股份形式買賣



## Grandeur of class 都會氣派

This spacious apartment in Convention Plaza Apartments is tastefully designed with contemporary furniture and finishing with an inviting warm neutral tones of marble floors and walls. Spanning a saleable area of 2,235 s.f., the apartment comprises three bedrooms (two ensembles), a combined living and dining room, three bathrooms and a mosaic-decorated powder room. With large windows spanning across the whole living and dining area, the flat lets in plenty of sunlight and offers stunning mountain view afar. The MTR Shatin to Central Link is expected to open by 2021, which greatly enhance the accessibility of Convention Plaza Apartments.

這位於灣仔會景閣的設計時尚寬敞單位充滿當代氣息，配置富現代感的家具及裝飾，與暖色調的雲石地磚和牆身，打造出柔和的背景調子，別具一格。單位的實用面積達2,235平方呎，設有三間睡房，包括兩間套房、相連的客廳、三間浴室及一間鋪滿馬賽克的化妝間。偌大的窗戶由客廳伸延至飯廳，引入無盡天然採光外，亦可眺望延綿的山景。港鐵沙中綫連接中環的支線預計於2021年通車，令來往會景閣的交通網絡更完善。

### Convention Plaza Apartments 會景閣

1 Harbour Road, Wan Chai 灣仔 港灣道一號

3 bed, 3 bath

Saleable 實用 2,235 s.f.

Sale 售 \$89,000,000

Inquiries 查詢 6188 1398 Josephine Yuen 阮小姐

Webpage No. 網頁編號 51273





Can be sold via company shares transfer  
可以公司轉讓股份形式買賣



## Seclusion in the city 城市雅居

Beyond a long driveway and surrounded by graceful trees, this tastefully decorated 1,112 s.f. (saleable) apartment in Repulse Bay is tucked away midway along South Bay Road, in an upmarket residential area known for being a verdant, serene neighbourhood. Featuring pale hardwood floors and white walls, the designer-decorated interiors are stylish and modern. The apartment can enjoy perfect green and sea views and consists of two bedrooms (one ensuite), two bathrooms, a combined living and dining room, a balcony, a fully-equipped kitchen, a maid's room and one covered car park.

越過僻靜的馬路，被四周優美綠樹環抱，這裝修高雅的1,112平方呎單位，坐落於淺水灣南灣道中段，寧靜清幽的高尚住宅區內。經過設計師的精心佈置，全屋雅潔的白牆配上硬木地板，營造出時尚及現代的格調。住宅設有兩間寬敞的睡房，其中一間為套房、兩間浴室、相連客廳、一個露台、設備齊全的廚房、家傭房及一個有蓋車位。

**South Bay Towers 南灣大廈**  
59 South Bay Road, Repulse Bay  
淺水灣 南灣道59號

**2 bed, 2 bath, 1 car park**

**Saleable 實用 1,112 s.f.**

**Sale 售 \$28,000,000 / Lease 租 \$53,000 incl.**

**Inquiries 查詢 9871 6828 Louis Wong 黃先生**

**Webpage No. 網頁編號 126754**



## Classic beauty 古典奢華

Nestled in a quiet enclave off Tai Hang Road and in close proximity to Causeway Bay, Fontana Gardens is known for its spaciousness with a high efficiency ratio. Offering expansive city view, this colonial-style apartment is meticulously decorated with crown moldings across all rooms each highlighted with a lavish chandelier. With a saleable area of 2,690 s.f., it consists of four bedrooms with one ensuite, three bathrooms, separated living and dining room, a balcony, two maid's rooms and a covered car park. The kitchen and bathrooms are furnished with granite tops and the bathroom are equipped newly installed shower and shower doors.

豪園隱密於大坑道的幽靜地段，毗鄰銅鑼灣，往來市區交通便捷。物業以單位闊落及實用率高見稱，這個偌大單位眺望廣闊都市景色，並以殖民地色彩裝潢，每個房間和大廳均飾以皇宮式的風格及不同的水晶吊燈，散發華麗雅致的格調。單位設有四間睡房，其中一間為套房、三間浴室、獨立客飯廳、露台、兩間家傭房及一個有蓋車位。廚房及浴室均鋪設花崗石枱面，浴室更更換了全新的淋浴設備及趟門。

**Fontana Garden 豪園**  
1-25 Ka Ning Path, Midlevels East 東半山 嘉寧徑1-25號  
**4 bed, 3 bath, 1 car park**

**Saleable 實用 2,690 s.f.**

**Sale 售 \$88,880,000**

**Inquiries 查詢 9648 6082 Christine Chong 莊小姐**

**Webpage No. 網頁編號 83498**





# HOME "MAKER"

he knew exactly my expectations for my home  
 he understood exactly what I was looking for i  
 Joseph is clearly an expert in what he does r  
 the after services are absolutely impressiv  
 His passion clearly reflected from how he  
 very easy to work with & a pragmatic pe'

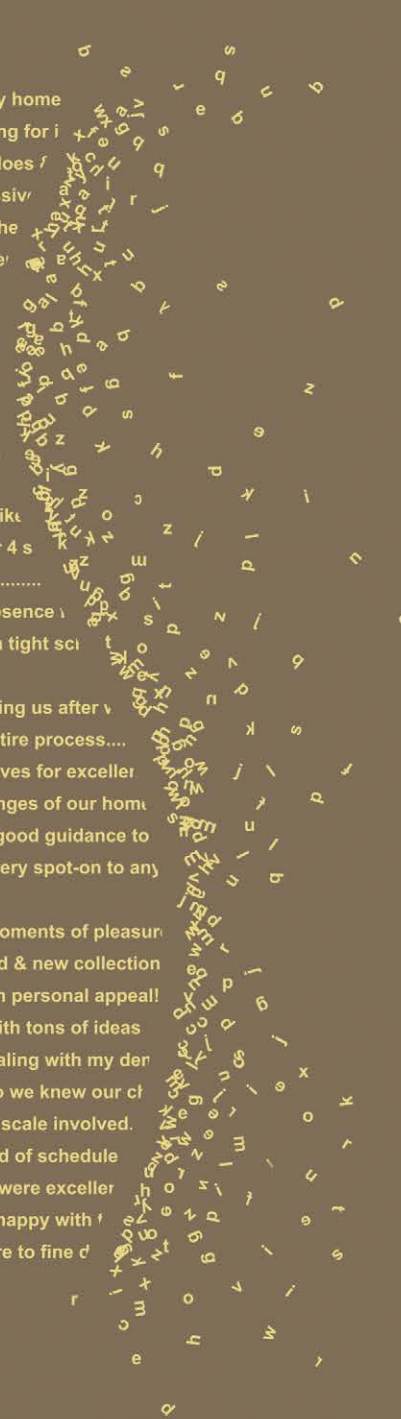
never overpromised but surpassing m)  
 he has been most patient with me and  
 I would highly recommend Joseph to a  
 JC is totally patient & responsive to all  
 we are totally happy with the end-result

Our friends wished they had someone like  
 We all amazed at his ability to make our 4 s  
 .....no hidden costs or surprise add-ons.....  
 Works continued steadily during our absence \  
 job done in advance even we required a tight sci

Joe has been most forthcoming in helping us after v  
 an admirable partner throughout the entire process....  
 a great communicator & a man who strives for exceller  
 Friends who visited all amazed the changes of our hom  
 he had a very refined taste & provided good guidance to  
 responses were absolutely efficient & very spot-on to any

we now have a home giving us many moments of pleasur  
 My dream art corner is alive with our old & new collection  
 ..this is no show flat, this is a home with personal appeal!  
 ...always ready to listen & responded with tons of ideas  
 a wonderful team...super efficient in dealing with my der  
 gave detailed emails of 'all' meetings so we knew our ct  
 described clearly the stages & the time scale involved.  
 ....in fact, we were able to move in ahead of schedule  
 I must say that the after-sales services were exceller  
 Joe wants his clients to be completely happy with f  
 ..very easy to work with, from big picture to fine d'

- Interior design
- constructions
- space planning
- project management
- tendering
- landscaping
- quantity survey



t/ 2524 9988 e/ jvision@biznetvigator.com a/ 11/f, leeloong building, 4 queen victoria st., central, hong kong



 Lucy SY Teo

*"Joseph has great aesthetic taste and so very detailed oriented, his super swift responses give me a great sense of security that he will always be ready to help."*

**Peak road -contemporary classic**



 Behnaz & Idris

*"We have worked with Joe on several projects and would happily work with him again. Every room is sophisticated yet cozy....he is a perfectionist but very easy to work with..."*

**Modern, vintage & mid-century.....**



 Behnaz & Idris

*"Joseph was able to quickly home in on what was important to us, from functional to aesthetic. We are thrilled with the result as always!"*

**Crown moldings, paneled walls & parquet floor = Timeless grace**



 Jennifer & Mandan Fong

*"We love your passion towards your work, your ideas are just awesome and I could never imagine my home will look like what it is now."*

**Magazine Gap road -pure elegance**

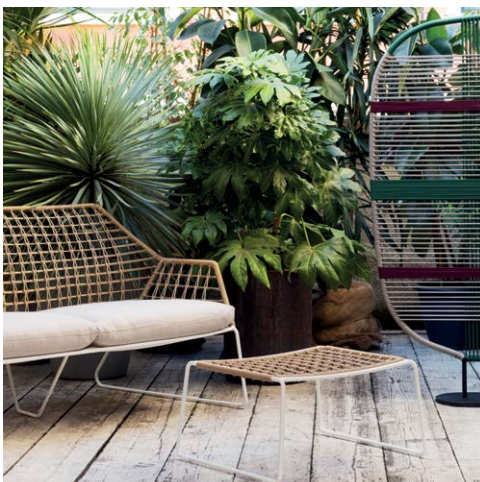




## Simple yet stylish 簡約時尚

Pampering yourself on a balcony or rooftop on a crisp winter morning is one of the best ways to enjoy outdoor living. An outdoor space decorated with well-selected furniture makes the environment much more pleasant. While picking outdoor furniture, colour, form, structure, and materials are the main areas that should be taken into consideration.

在天朗氣清的冬日早上，留在天台或露台享受戶外環境，實屬賞心樂事。天台或露台配上精挑細選的傢具，更令戶外環境更加迷人。選擇戶外傢具時，顏色、類型、結構及材料都值得留意。



### Saba

Saba's New York Outdoor collection expands with a line of exclusive woven seating made entirely by hand. Designed by Sergio Bicego, New York Sofa Soleil is the product of careful research into materials – polyethylene ropes of different colours cover the painted metal rod structure. The finishes of the exteriors are available in white and anthracite grey. The collection includes a sofa, an armchair, a pouffe, a chair (produced both with armrests and without), and a stool.

Saba的New York Outdoor collection，提供了一系列的全人手編織座椅。New York Sofa Soleil由Sergio Bicego設計，其材料組合經過嚴謹挑選，由不同顏色聚乙烯製繩索包裹塗上不同顏色的鐵杆作為座椅結構，部分產品的塗層則包括白色及灰色。整個組合包括梳化、扶手椅、軟墊、可選擇附有或不設扶手的座椅，以及凳子。





## Moroso

Moroso's range of outdoor furniture is adaptable to any outdoor space. Designed by some of the best names around including Patricia Urquiola, Marc Thorpe, and Nipa Doshi and Jonathan Levien, Moroso's playful and design-oriented outdoor furniture has a great range of products to choose from.

Moroso的戶外傢俱由多名著名設計師設計，包括Patricia Urquiola, Marc Thorpe, Nipa Doshi and Jonathan Levien，作品可用於不同戶外環境。這些傢俱匠心獨運，有各式各樣的产品可供選擇。



## Kettal Studio

Designed by Kettal Studio, the Pavilions products bring order, form, and structure to outdoor areas and are an ideal solution to create an extension of the living room in an outdoor space. The architecture now has minimal structure, aiming to create open spaces that flow freely into each other through the use of light, transparency, and lightness of structure. This new series of Pavilions brings the system even closer to architecture, as Kettal has developed more tools for its integration in the architecture environment.

由Kettal Studio設計，the Pavilions系列的傢俱為戶外空間增添選擇，特別透過不同的組合、排列及結構，將客廳延伸到室內。當代建築設計都以簡約為主，以光、透明度及輕盈的感覺配合整體結構。Kettal Studio全新的Pavilions系列配合目前的建築風格，設計不同的作品方便設計師巧妙利用傢俱，令戶外環境更舒適怡人。





### Macdonnell Road

中半山 麥當勞道3號

4 bed, 4.5 bath, 1 car park

Modern 4-ensuite apartment with balcony and city view at Midlevels Central 時尚四套房住宅，連露台，眺望城市景

Saleable 實用 2,547 s.f.

Lease 租 \$139,000 excl.

Inquiries 查詢 9093 3381 Stephen Chan 陳先生

Webpage No. 網頁編號 186198



### Tregunter Tower 3

中半山 地利根德閣3座

14 Tregunter Path

3 bed, 3 bath, 1 car park

Nicely decorated flat with comprehensive clubhouse facilities in prestigious location

雅致裝修單位，享完善會所設施，地段尊貴顯赫

Saleable 實用 2,361 s.f.

Lease 租 \$145,000

Inquiries 查詢 9319 0605 May Lee 李小姐

Webpage No. 網頁編號 29799



### Headland Road, Repulse Bay 淺水灣 赫蘭道

3 bed, 2.5 bath, 2 car parks

Modern 3-bedroom low-rise duplex with a study and nice decorations at exclusive location, internal staircase to private roof

時尚三房低密度複式單位，連書房，配以雅致裝修，地段尊貴，設室內內置樓梯往私家天台

Saleable 實用 2,381 s.f.

Lease 租 \$150,000 excl.

Inquiries 查詢 9011 5499 Yuky Chung 鍾小姐

Webpage No. 網頁編號 14693



### Mount Kellett Road

山頂 嘉列山道

4 bed, 4.5 bath, 1 car park

Prestigious 4-ensuite mid-rise apartment on The Peak 尊貴四套房中密度住宅，地段優越

Saleable 實用 2,366 s.f.

Lease 租 \$165,000 incl.

Inquiries 查詢 9011 5499 Yuky Chung 鍾小姐

Webpage No. 網頁編號 20226



### Garden Terrace 2 & 3

中半山 花園臺2 & 3座

8A Old Peak Road

4 bed, 4 bath, 2 car parks

4-ensuite harbour view apartment with facilities at Midlevels Central 四套房海景單位，連設施

Saleable 實用 2,580 s.f.

Lease 租 \$140,000 incl. (Negotiable)

Inquiries 查詢 9648 6082 Christine Chong 莊小姐

Webpage No. 網頁編號 30133



### Trafalgar Court

東半山 大寶閣

70 Tai Hang Road

5 bed, 4 bath, 2 car parks

Large and spacious harbour view apartment with brand new decorations 偌大寬敞海景單位，裝修簇新

Saleable 實用 2,465 s.f.

Lease 租 \$168,000 incl.

Inquiries 查詢 9026 2912 Michelle Chung 鍾小姐

Webpage No. 網頁編號 188032







### Grenville House

中半山 嘉慧園

1 & 3 Magazine Gap Road

4 bed, 3 bath, 1 car park

Newly renovated 4-bedroom apartment  
enjoying sublime city view

全新裝修四房單位，眺望壯麗城市景

**Saleable** 實用 3,349 s.f.

**Lease** 租 \$190,000 incl.

**Inquiries** 查詢 6188 1398 Josephine Yuen 阮小姐

**Webpage No.** 網頁編號 185049



### Kennedy Terrace

中半山 堅尼地台8號

8 Kennedy Road

3 bed, 3 bath, 1 car park

Brand new full floor 3-bedroom apartment at  
prime location

全新全層三房單位，地段優越

**Saleable** 實用 1,800 s.f.

**Lease** 租 \$200,000 incl.

**Inquiries** 查詢 9662 2199 David Lau 劉先生

**Webpage No.** 網頁編號 184946



### Deep Water Bay Road

深水灣 深水灣道

4 bed, 4.5 bath,

569 s.f. roof, 2 car parks

Contemporary townhouse with spectacular view  
over Deep Water Bay

當代時尚洋房，飽覽深水灣攝人景致

**Saleable** 實用 2,742 s.f.

**Lease** 租 \$230,000 incl.

**Inquiries** 查詢 9026 2912 Michelle Chung 鍾小姐

**Webpage No.** 網頁編號 10204



### Altadena

山頂 白加道27號

27 Barker Road

4 bed, 4.5 bath, 2 car parks

Prestigious 4-bedroom duplex with balcony  
enjoying fantastic Victoria Harbour view

尊貴四套房複式單位，連露台，享醉人維港美景

**Saleable** 實用 4,073 s.f.

**Lease** 租 \$330,000 incl.

**Inquiries** 查詢 9662 2199 David Lau 劉先生

**Webpage No.** 網頁編號 12838



### Gough Hill Road

山頂 歌賦山道

4 bed, 4.5 bath,

1,530 s.f. garden, 2 car parks

Immaculate 4-ensuite townhouse with private  
garden and swimming pool

四套房尊貴洋房，氣派懾人，享私家花園及游泳池

**Saleable** 實用 4,652 s.f.

**Lease** 租 \$420,000 incl.

**Inquiries** 查詢 9026 2912 Michelle Chung 鍾小姐

**Webpage No.** 網頁編號 110365



### Peak Road

山頂 山頂道

5 bed, 5.5 bath, 5,359 s.f. garden,

1 garage (4 car parks)

One of a kind 5-bedroom Peak house with a  
study and private swimming pool

別具一格山頂尊貴五房洋房，連書房及私家游泳池

**Saleable** 實用 5,342 s.f.

**Lease** 租 \$588,000 incl.

**Inquiries** 查詢 9026 2912 Michelle Chung 鍾小姐

**Webpage No.** 網頁編號 13525







## 38 Black's Link, Deep Water Bay 深水灣 布力徑38號

**5 bed, 4.5 bath, 2 car parks**

**Saleable 實用 4,780 s.f.**

**Lease 租 \$398,000 incl.**

**Inquiries 查詢 9011 5499 Yuky Chung 鍾小姐**

**Webpage No. 網頁編號 103456**



Amidst the hustle and bustle cosmopolitan in Hong Kong, you will live rejoicing every day if you explore a quiet and subtle home sweet home.

Perched on Black's Link at Deep Water Bay, sitting on the living room and overlooking the stunning views of Deep Water Bay golf club, the secluded beach and rolling hills are the most relaxed activities in this newly renovated house which offers exclusive privacy. What's more? Do planting and growing your own art garden that gives you pleasure and satisfaction!

Spanning a spacious saleable area of 4,780 s.f., this luxurious house is highly accessible to connect every living space with a private lift. You only take a few steps walking to swimming pool and tennis court to enjoy your leisure time,

not to forget the picturesque views!

The sumptuous house boasts five massive bedrooms including three ensuite bedrooms, four bathrooms and a powder room, two family rooms, separate living and dining rooms and two covered car parks. Kitchen is also fully fitted with tall wall cabinets and a unique kitchen island.

倘若你想在這繁華都市裡找個世外桃源，這寧靜隱逸的安樂窩足以令你整天賞心樂事。

這聳立於深水灣布力徑的全新裝修海景洋房，坐擁高私隱度，安坐家中便可遠眺深水灣高爾夫俱樂部、恬靜怡人的海灘和群山起伏的山巒美景，閒時更可陶冶性情培養對園藝的興趣，為自己的家居打造賞心悅目的園藝花園。

這罕有地段的洋房實用面積廣達4,780平方呎，設有私家升降機通往各樓層，舉步可達游泳池及網球場，絕對是舒展身心的好地方，同時亦不忘飽覽風光明媚的優美景色!

洋房間隔設計實用，設五間偌大睡房，包括三間套房、四間浴室及化妝間、兩個家庭廳、客飯廳及兩個有蓋車位。廚房設備齊全，連落地廚櫃及別具一格的中島型廚房櫃台。







## Supreme Tranquility

### 優雅靜謐

Celestial Garden at Repulse Bay is a luxury development on the Southside with quiet and serene setting.

With the salesable area of 1,962 s.f., apartment is a rare "C-unit", finished with quality teakwood parquet flooring, deluxe bathrooms decorated with marble and fully equipped Western kitchens.

Located at the top of Repulse Bay Road, convenient to shops, restaurants, schools, and markets, within walking distance to Tai Tam Country Park, close to the Hong Kong Cricket Club, and 10-minute commute to Causeway Bay and a 15-minute commute to Central.

坐落於淺水灣道頭段，往返購物商場、餐廳、學校及街市都十分方便。舉步可輕易步行到大潭郊野公園，鄰近香港木球會；車程分別只需十分鐘及十五分鐘可直達銅鑼灣和中環。

單位是罕有C型單位，實用面積為1,962平方呎，鑲嵌了質料上乘的柚木地板、飾滿雲石的豪華浴室及裝配齊全的西式廚房。



### Celestial Garden

詩禮花園

5 Repulse Bay Road, Repulse Bay

淺水灣 淺水灣道5號

Saleable 實用 1,962 s.f.

Sale 售 \$89,000,000

Inquiries 查詢 9662 2199 David Lau 劉先生

Webpage No. 網頁編號 7296





KING'S  
CROSS  
QUARTER  
LONDON



Find your ideal home at King's Cross Quarter, a beautiful development of 119 luxury apartments comprising of two bed apartments and three bed duplex penthouses, each with generous outdoor space. Excellent transport connections from King's Cross St. Pancras and Angel stations

## PRICES FROM £1,380,000

- COMPLETED DEVELOPMENT
- FULLY FURNISHED INTERIOR DESIGNED UNITS FOR SALE
- APPOINTMENTS AT DEVELOPER'S HK OFFICE AND SITE TOURS IN LONDON AVAILABLE



Concierge



Cycle Store



Cinema



Courtyard



Spa



Swimming Pool



Gym



Property No.: UK18121901

Contact Us:

+852 9010 7621 / [projects@landscape.com](mailto:projects@landscape.com)

Developer:

REGAL  
LONDON

LANDSCOPE  
INTERNATIONAL

The information, text and photos contained herein are provided solely for the convenience of interested parties and no warranty or representation as to their accuracy, correctness or completeness is made by Landscape International Properties Ltd. or the sellers, none of whom shall have any liability or obligation with respect thereto. These offerings are made subject to contract, correction of errors, omissions, prior sale, change of price or terms or withdrawal from the market without notice. Information provided is for reference only and does not constitute all or any part of a contract.

SELLING AGENT: Landscape International Properties Limited (C-062104) is licensed and regulated by EAA. Our sales representatives for overseas property work exclusively in relation to properties outside Hong Kong and unless expressly stated otherwise, are not licensed under the EAA to deal with Hong Kong properties. Purchasing uncompleted properties situated outside Hong Kong is complicated and contains risk. You should review all relevant information and documents carefully before making a purchase decision. If in doubt, please seek independent professional advice before making a purchase decision.





### High Yield Office Building Single-let to Government 政府單一承租高回報寫字樓

- Securely let on an FRI lease to Government until 2027
- Tenant has been in occupation since 1997
- Prominent location close to regional shopping centre and several other civic buildings
- 政府全面維修保險（FRI）租約單一承租至2027年
- 租客從1997年一直承租至今
- 鄰近區內大型商場和其他政府寫字樓

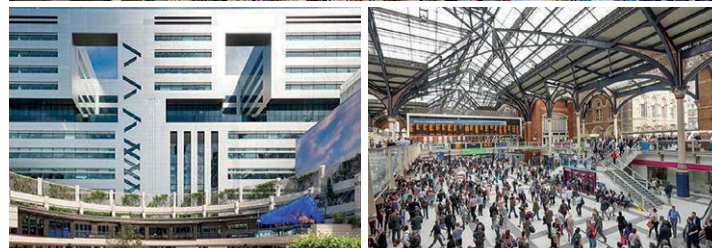
Net Initial Yield 淨租金回報	8.00%
Guide Price 指標價	£8,650,000
Passing Rent p.a. 現有每年租金	£738,275
Ownership 所有權	Freehold 永久業權
Asset Class 資產類別	Office 寫字樓
WAULT 加權平均尚餘租賃期	8.4 years 8.4年
Tenancy 租客	The Secretary of State for Communities and Local Government

Property No. UK11801

FOR ENQUIRIES 歡迎查詢  
6215 1618 Kelvin Wong 黃先生  
kelvin.wong@landscape.com

We also have other UK en-bloc office buildings, high street retail, shopping arcades, industrial warehouse, hotel, redevelopment sites available. Please contact us for more information.

除以上投資機會外我們還有其他在售的英國全棟寫字樓，街舖，商場，物流物業，酒店，重建地盤等投資機會。如欲了解更多詳情，歡迎聯絡我們。



### Prime Asset Opposite The City of London's Busiest Transport Hub 倫敦金融城最繁忙交通樞紐罕有核心資產

- Immediately opposite to the entrance of the 3rd busiest London transport hub - Liverpool Street Station
- Prime mixed-use commercial building with more than 60% of income contributed by its retail portion
- 位於倫敦第三繁忙的交通樞紐 — Liverpool Street 站的正對面
- 核心商業物業，超過60%租金收入來自零售部分

Net Initial Yield 淨租金回報	4.75%
Guide Price 指標價	£37,500,000
Passing Rent p.a. 現有每年租金	£1,900,921
Ownership 所有權	Long Leasehold 長租賃權
Asset Class 資產類別	Retail, Office & Leisure 零售，寫字樓，休閒
WAULT 加權平均尚餘租賃期	10.2 years 10.2年
Tenancy 租客	Multi-let 多個租客

Property No. UK12103





### Iconic Grade A Office Building in the City of London 倫敦金融城地標甲級寫字樓

- Substantially refurbished in 2018
- Situated just next to Cannon Street Station
- Asset management opportunity with low passing rent of £56 psf
- Walking distance to The Bank of England, Royal Exchange, and Bloomberg Place
- 2018年全面翻新
- 位於Cannon Street 地鐵站正旁邊
- 現時呎租只有每年56英鎊，具資產提升潛力
- 英倫銀行，Royal Exchange和Bloomberg Place都位於步行範圍內

Net Initial Yield 淨租金回報	4.74%
Guide Price 指標價	£60,000,000
Passing Rent p.a. 現有每年租金	£3,034,206
Ownership 所有權	Freehold 永久業權
Asset Class 資產類別	Office & Retail 寫字樓及零售
WAULT 加權平均尚餘租賃期	4.0 years 4.0年
Tenancy 租客	Multi-let 多個租客

Property No. UK12111



### Prime Hotel Refurbishment and Repositioning Opportunity in Paddington 倫敦帕丁頓罕有酒店翻新及重新定位的投資機會

- Proximity to Paddington Station, a major transport hub with walking distance to major attractions including Hyde Park and Bond Street
- The continuing regeneration of Paddington Basin and 8 million+ sq ft of new development will further enhance Paddington's position of London's western gateway
- 與主要交通樞紐帕丁頓車站只有數步之遙，加上步行即可到達海德公園和邦德街等主要景點，地段因此受到遊客歡迎
- Paddington Basin的重建項目將帶來超過800萬平方尺的新發展項目，這將進一步提升帕丁頓作為倫敦西部門戶的地位

Guide Price 指標價	£25,000,000
Gross Internal Area 建築面積	26,071 sq ft
No. of En-suite Bedrooms 套房數目	68
Price per room 每間房間價錢	£367,647
Ownership 所有權	Freehold 永久業權
Asset Class 資產類別	Hotel 酒店
Status 現狀	Vacant Possession 交吉

Property No. UK15102

FOR ENQUIRIES 歡迎查詢  
6215 1618 Kelvin Wong 黃先生  
kelvin.wong@landscape.com

We also have other UK en-bloc office buildings, high street retail, shopping arcades, industrial warehouse, hotel, redevelopment sites available. Please contact us for more information.

除以上投資機會外我們還有其他在售的英國全棟寫字樓，街舖，商場，物流物業，酒店，重建地盤等投資機會。如欲了解更多詳情，歡迎聯絡我們。





### Prime Freehold Foodstore Investment 倫敦永久業權食品店投資機會

- 100% Prime Store let to Sainsbury's until 2043
- Strong London trading location 2.5 miles from the West End
- Benefit from the on-going South Kilburn Regeneration Programme due to complete in 2029
- 由英國大型連鎖超市Sainsbury's承租至2043年
- 位處倫敦優越貿易地段，距離West End僅2.5英里
- 受惠於正在進行的South Kilburn Regeneration Programme，該計劃將於2029年完成

Net Initial Yield 淨租金回報	4.00%
Guide Price 指標價	£23,250,000
Passing Rent p.a. 現有每年租金	£992,065 subject to 5 yearly open market rent reviews
Ownership 所有權	Freehold 永久業權
Asset Class 資產類別	Retail 零售
WAULT 加權平均尚餘租賃期	24.2 years 24.2年
Tenancy 租客	Sainsbury's Supermarkets Ltd guaranteed by J Sainsbury plc

Property No. UK13112



### Rare Edinburgh Investment Opportunity 愛丁堡矜罕投資機會

- High-profile location within Haymarket, adjacent to Edinburgh's Exchange District at City Centre
- Chronic shortage of Grade A office space putting significant positive pressure on rents
- 位於Haymarket的尊貴顯赫地段，毗鄰愛丁堡市中心的Exchange District
- 甲級寫字樓持續短缺，租金回報優厚

Net Initial Yield 淨租金回報	6.50%
Guide Price 指標價	£18,850,000
Passing Rent p.a. 現有每年租金	£1,301,711
Ownership 所有權	Freehold 永久業權
Asset Class 資產類別	Office 辦公室
WAULT 加權平均尚餘租賃期	10 years 10年
Tenancy 租客	Royal London Mutual Assurance Society Limited

Property No. UK14002

FOR ENQUIRIES 歡迎查詢  
6011 1706 Simon Ng 吳先生  
simon.ng@landscape.com

We also have other UK en-bloc office buildings, high street retail, shopping arcades, industrial warehouse, hotel, redevelopment sites available. Please contact us for more information.  
除以上投資機會外我們還有其他在售的英國全棟寫字樓，街舖，商場，物流物業，酒店，重建地盤等投資機會。如欲了解更多詳情，歡迎聯絡我們。





### Aoyama Park Tower

#### 澀谷區豪華住宅大廈

Center for youth fashion and culture, Shibuya is the birthplace to Japan's entertainment and trends. Both the Shibuya Station and surroundings are undergoing massive redevelopment, scheduled to complete and forever change this Tokyo landmark over coming years. A highly anticipated 230m-high Shibuya Scramble Square 「渋谷スクランブルスクエア第1期」 will be opened Autumn 2019. EXciting!!!

澀谷既是日本娛樂熱點和潮流的發源地，亦是青年時尚及文化中心。澀谷站和周邊地區正在經歷大規模的重建更新，這東京地標將在未來數年為你帶來全新面貌，振奮人心。萬眾期待樓高230米的澀谷Scramble Square將於2019年秋季竣工，屆時勢必成為潮流地標！

Guide Price JPY 340M

Location 位置	Shibuya-ku, Tokyo 東京澀谷區
Distance 距離	4 min walk from Shibuya Station / 8 min walk from Omotesando Station 澀谷站4分鐘步程 / 表參道站8分鐘步程
Investment Type 投資類型	Residential 住宅
Gross Floor Area 建築面積	138.59 m <sup>2</sup> (平方米)
Size 間隔	3LDK 三房
Floor 樓層	19/F of 34-storey 19樓 (樓高34層)
Developer 發展商	Mitsui Fudosan 三井不動產
Completion 竣工日期	March 2003 2003年3月

Property No. JP1011

### Ebisu Garden Terrace Ichibankan

#### 惠比壽精品住宅

Constantly being voted by locals as “The most-wanted area to live in Kanto”, Ebisu (aka Yebisu) evolved from a Beer Brewery Company and is now renowned for high class food and drink, with sophisticated restaurants, cafés, izakaya, and tachinomi (“stand and drink”) bars. Accessible via the Skywalk from JR, Yebisu Garden Place 「惠比壽ガーデンプレイス」 is one of Tokyo's most pleasant cities within the city. Hottest Winter Illumination spot in the city!!

惠比壽由啤酒釀造公司發展而來，現在以高檔食品和飲料而聞名，區內特色餐廳、咖啡廳、居酒屋及酒吧林立，一直都被本地人選為「關東最受歡迎的居住地區」。從JR通過行人天橋，惠比壽花園廣場是東京其中一個不可錯過的人氣觀光勝地，其中冬日的燈飾更是美不勝收！

Guide Price JPY 279M

Location 位置	Meguro-ku, Tokyo 東京目黒區
Distance 距離	9 min walk from JR Ebisu Station JR惠比壽站9分鐘步程
Investment Type 投資類型	Residential 住宅
Gross Floor Area 建築面積	113.21 m <sup>2</sup> (平方米)
Size 間隔	2LDK 兩房
Floor 樓層	28/F of 32-storey 28樓 (樓高32層)
Completion 竣工日期	July 1994 1994年7月

Property No. JP1012

FOR ENQUIRIES 歡迎查詢

6011 1706 Simon Ng 吳先生 simon.ng@landscape.com

9126 5848 Michael Yeung 楊先生 michael.yeung@landscape.com



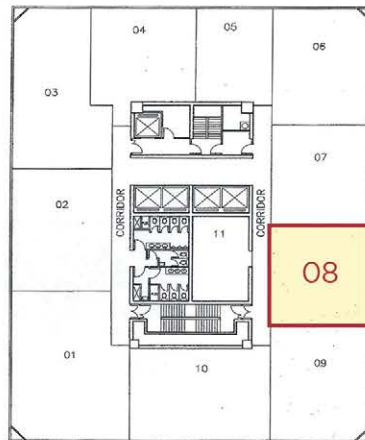


## 中環 美國銀行中心 Bank of America Tower, Central

- 傲據中環核心 CBD 世界級地標名廈
- 頂級國際集團 上市公司 專業機構匯集
- 極罕有核心區甲廈可供出售全海景細位
- 正面環抱中環金鐘煙花醉人全海景致
- 天橋連接港鐵站上蓋, 鄰近五星酒店 政府總部

特約代理  
**HK\$78.9M**

### ▼ 極高層 建築面積: 1,361 sq.ft



Sold via company shares transfer  
可以公司轉讓股份形式買賣

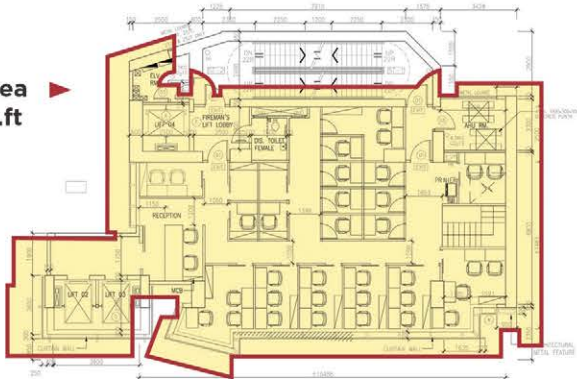
上述樓面面積未經核實 物業編號 CM/CTLba12

## Causeway Bay Serviced Office Floor



- Core CWB Elegancy Location, Close to Lee Garden 3
- Rare Whole Floor - Only 2,657 sq.ft
- Attractive Modern, Stylish, Iconic Building
- **WHOLE FLOOR -**
  - 1) Brand New Modern Decoration - Tailor-Made
  - 2) Flexible Layout - Build to Suit
  - 3) Individual Reception & 24 Hours Life Access
  - 4) All Brand New Furniture, Fitting, Pantry, Wi-Fi Network
  - 5) Designable Tenancy - Up From 6 Months

Gross Area  
2,657 sq.ft



上述樓面面積未經核實 物業編號 CM/CWBcb22

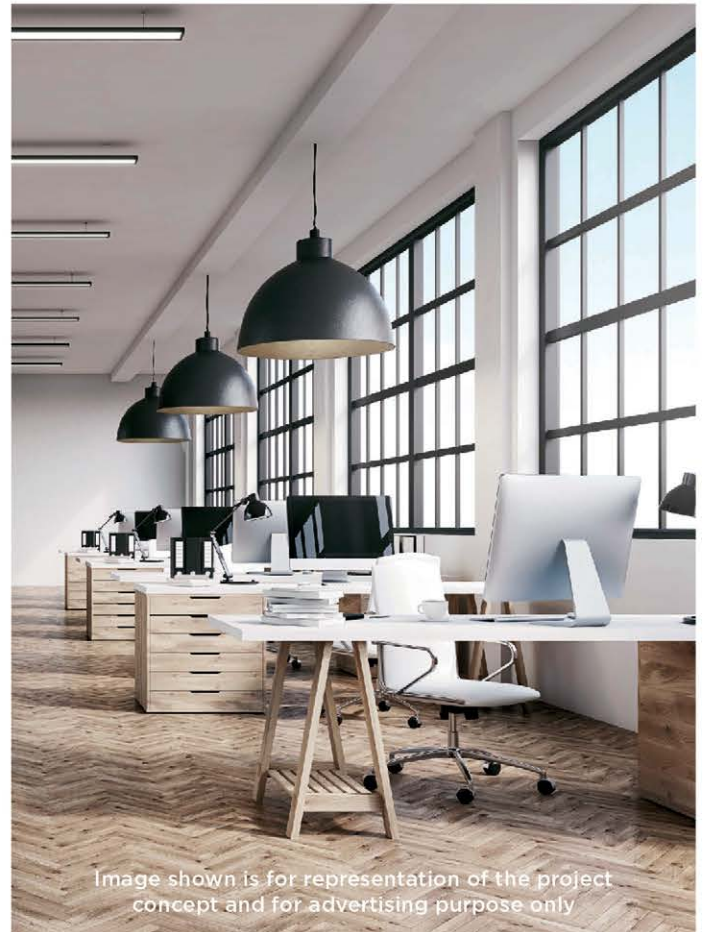


Image shown is for representation of the project concept and for advertising purpose only

Inquiries 查詢:

9484 5501 Mr. Lai 黎先生



*Glenfarclas*<sup>®</sup>

FROM **CASK** TO  
*Glass*



**VERY RARE SINGLE MALT WHISKY**

**EDINBURGH  
WHISKY  
CLUB**

24/F Euro Trade Centre,  
Central, Hong Kong  
+852 6386 2634

