



Annual Review 2018

barn wood

Hello

Welcome to our annual review for 2018

2018 was a notable year for making connections through our work and this review looks back at a few highlights. It also describes the wide range of activities we continue to be involved in across our programmes to help build a sense of belonging in Gloucestershire.

First, some background information.

Change

Although Barnwood has been around for many years, in 2011 we had a shift in our thinking

Our new vision was established - to create the best possible environment in Gloucestershire for disabled people and people with mental health challenges to make the most of their lives. So, we set ourselves the task to enable lasting change across the county.

To deliver the Trust's vision, we realised we wanted to create opportunities to develop people, spaces and voices in a community context, in order to...

...build a movement for social change for disability and mental health in Gloucestershire

Why?

Disabled people and people with mental health challenges across the county told us they wanted:

- something satisfying to do ~ giving day-to-day purpose
- somewhere good to live ~ your surroundings affect how you feel
- people to spend time with ~ avoiding loneliness and isolation
- ways of encouraging positive attitudes ~ tackling stigma, discrimination and prejudice

That is...

...something to **Do**, somewhere to **Live**, some people to **Share** experiences with, and some way to have a **Voice**

Beginnings

The starting points for all our work are:

- everyone has something they **care** about and something to **offer**
- doing things **together** breaks down barriers and builds confidence, so opportunities can emerge
- focus on what's **strong** not what's wrong
- enable **lasting local** change
- become **ourselves** the community we want to live in

Success

What does 'the best possible environment' look like?

It's about a neighbourhood, a block of flats, a group of streets, an estate, a village, a care home where...

- everyone knows someone to say hello to, have a cup of tea with and call on if they need a hand
- everyone has something to do that they enjoy and someone to do that with
- everyone has the confidence to join in, because they know they'll be welcome

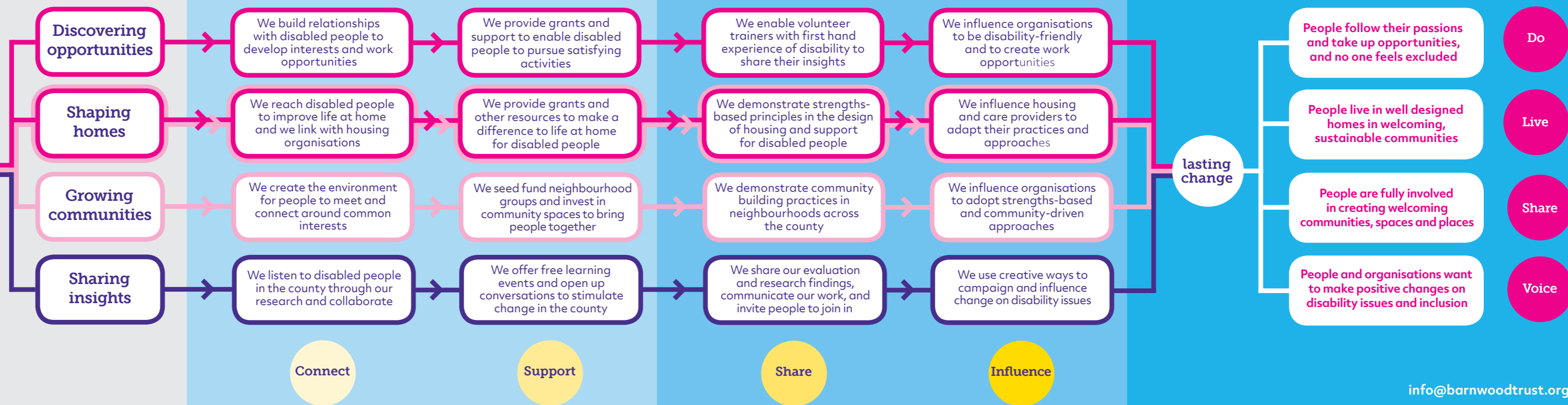
...and that 'everyone' includes disabled people and people with mental health challenges

Belonging

So, Barnwood builds belonging

We work together with the people of Gloucestershire to bring the county closer together, exploding myths about disability and mental health. By sparking new community connections, sharing ideas and providing grants, we enable people to shape where they live and discover new opportunities.

Our plan



barn wood

Building belonging

barnwoodtrust.org

info@barnwoodtrust.org

01242 539935

charity number: 1162855

Some highlights in 2018

Building relationships: Stories from people we collaborated with in 2018

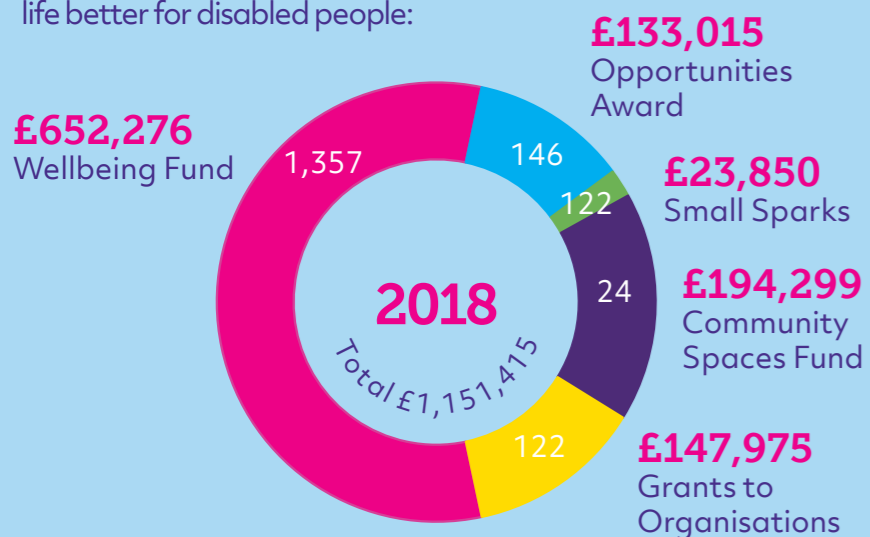
Building belonging starts with building relationships – with people, with places, with organisations. So, a priority for us is spending the time it takes to get to know people and places across the county. Finding ways of collaborating to enable lasting change.

In 2018: Welcomers built relationships to enable people to discover opportunities; our Community Builders supported connections to build welcoming and inclusive communities in 20 neighbourhoods; our Small Sparks grants led to 2,935 hours of volunteer time by people with disabilities and mental health challenges, together with their friends and neighbours in communities across the county; we ran workshops and attended events to share information and ideas to help build belonging; and the Trust gave grants to support all of this.

Here are just a handful of stories from 2018 to give a flavour of what happens when people bring their ideas together.

Grants given in 2018

All the Trust's grants are aimed at making life better for disabled people:



- To make a difference to individual disabled people and people with mental health problems
- To make life better where people live, including disabled people
- For community spaces where everyone is included
- To support organisations working with disabled people

For further details of the Trust's finances view the Charity Commission Report at <https://bit.ly/btcharityreport>

Do



People follow their passions, taking up opportunities and joining in

Faye hits the track

A fresh set of wheels in 2018 meant that Faye could take her passion for racercycling to new levels

<https://bit.ly/fayeracerunner>

316 new people were referred to the Welcoming team in 2018

Live



People live in well-designed homes in welcoming communities

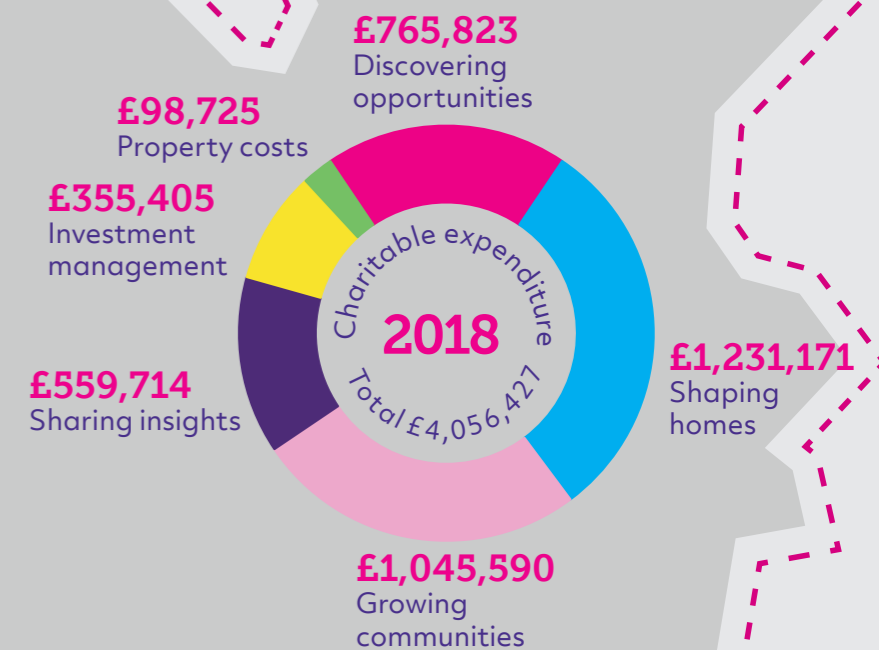
Making home

Applying for a few items to help at home was just the start for Emma, her passion for arts blossomed too

<https://bit.ly/emmathome>

The Grants team funded 29 fridges and 187 washing machines in 2018

How the Trust's funds were spent



Share



People are involved in creating welcoming communities, spaces and places

Making and mixing music

An accessible DJ group bought new equipment and continued to grow to include more people

<https://bit.ly/djgroup>

122 Small Sparks grants were awarded to community groups in 2018

Voice



People and organisations make positive changes on disability issues and inclusion

Joining up

Exciting developments in our relationships with Gloucester City Council and the constabulary

<https://bit.ly/joiningup>

In 2018, 81 workshops took place, including 6 Stewardship Circle learning events

The Trust attends events in Gloucestershire all year round, often taking our campervan Barney.

In 2018, we attended 42 events in communities across the county, speaking with thousands of people about what we do, what we have to offer, and to stimulate conversations about what's possible.



The cover image is credited to Wheels for All in the Forest of Dean <https://bit.ly/fodwheelsforall>
For more examples of stories from 2018 visit the Barnwood Trust website:



barnwoodtrust.org