

The **leading** manufacturer and
supplier of **print and apply**
labelling solutions in Europe.



Print and Apply perfected

Logopak are the leading manufacturer and supplier of print and apply labelling solutions in Europe. We have spent over 30 years refining and perfecting print and apply techniques. Our knowledge and experience is unsurpassed, and our print and apply machines deliver the longevity and quality required to meet the rigours of modern industry.



Logopak International Ltd

Tel +44 (0) 1904 69 23 33

Fax +44 (0) 1904 69 07 28

www.logopak.co.uk

(02) 050 1904 692333 (17) 071225 (37) 0110



**Solution
Partner**

Logopak is a GS1 Accredited Solution Provider. GS1 set global standards to improve supply chain efficiency. GS1 accreditation endorses our reputation as experts in the field of implementing barcode and supply chain solutions to GS1 standards.

About Logopak



Logopak was founded in 1978 by English entrepreneur Chris Hastings-Long. Germany's reputation for quality precision engineering and technology led him to seek out a location there to base his manufacturing operation. **Logopak** machines are still produced in Hartenholm near Hamburg, and quality remains the driving force behind production. This blend of German engineering and English entrepreneurial spirit gives **Logopak** its unique character, which is evident at the German head office where a Royal Mail pillar box and BT phone box flank the entrance.



Logopak International UK

The UK head office in York has been established since 1989 and provides sales and service to the UK and Ireland. All elements of the service are carried out in-house, including training, customer call centre, consumable sales, service engineers, software developers and spare parts.



As a manufacturing group we have purchased 11 **Logopak** pallet labellers over the last 13 years. These machines have proven very reliable both mechanically and for their print legibility and they are very light with regards maintenance requirements.

Factory Manager, A.G. Barr p.l.c.

The quality of engineering at **Logopak** is uncompromising, and each machine is extensively tested and quality checked throughout the build process to ensure everything is perfect prior to the first performance tests. Our machines last more than ten years in full production, representing excellent low cost of ownership.

The company now employs over 250 people, and supplies machines all over the world.



Engineering

All **Logopak** machinery is manufactured in our state-of-the-art manufacturing facility in Hartenholm, in the north of Germany, using a Kanban system for lean production. Supplying 10% of the European market, and dominating the field in Germany and the UK, this amounts to over 1,000 units/year.

Each print & apply labeller is purpose designed from the ground up, as an industrial specification unit, for life in challenging environments. Using the very best quality components, Logopak design their own machines, print engine, software & hardware only using minimal thirdparty manufactured components from leading specialists such as Festo and Erwin Sick.

Logopak firmly believe that by designing & manufacturing their own product they have better control over quality.



Hardware options

Controller

Powder coated steel or optional stainless steel control cabinet with 10.5 inch touch screen HMI displaying current label image, machine status and user friendly diagnostics. The modular design encompasses all controls in one unit.

Enclosure

Powder coated steel or optional stainless steel labeller enclosure with optional heating, cooling, illumination and pressurisation. All enclosures supplied with pneumatic trap door to protect from adverse environmental conditions.

Conveyor

We can supply and install a comprehensive range of conveyors to improve the efficiency of many types of manufacturing operations. Our range includes flat belt conveyors, flex chain conveyors, powered and gravity roller conveyors.

Scanner

SICK barcode scanners have excellent reading performance to ensure the process flow even when the barcodes are contaminated or damaged. The high scanning frequency allows high process speeds. The SICK barcode product range provides the correct solution for every task.



Case labelling

Logopak offer a range of solutions suitable for case labelling, depending on the complexity and speed of the operation. Global standard barcode labels are applied to facilitate the handling and tracking of an item through the supply chain. A wide range of applicator types are easily fitted to the unit to allow labels to be applied on all faces of the product.

Built to handle high volumes and fast production lines with minimum downtime, **Logopak** machines offer unrivalled reliability. The stripped-back mechanical design means maintenance requirements are low, and the consumable replacement mechanism has been optimised for quick reel replacement.

06889/05435 BBE: Jan 2014

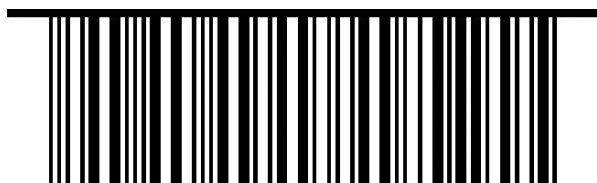
Original Energy Drink

Really Light 66% Extra Free

12x500ml

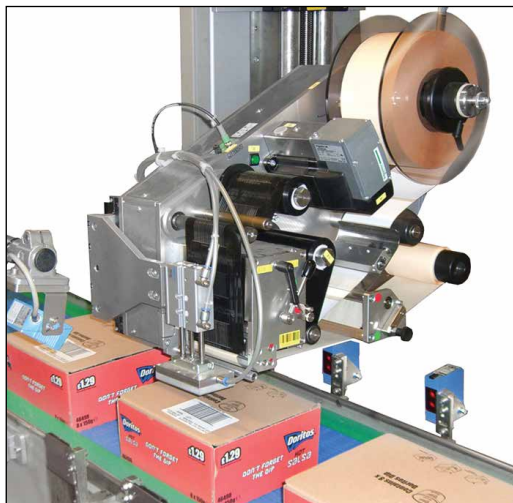
355453

11:09



050 00469 05435 9





410 Compact Labeller

The 410 is a compact entry-level system with a small footprint at a competitive price. Ideal for applying TUC labels to retail consumer product, the body splitting technology allows for quick and easy servicing.

“

Having tried and tested many other systems, we finally decided to invest in **Logopak** and have found their print and apply equipment to be robust and well engineered, with excellent print quality and a customer service to match.

Packaging Manager, Marlow Foods Ltd.

515 High Speed Labeller

For high speed label application, our best-selling 515 gives you industrial strength, high quality precision labelling equipment. The large capacity roll ensures minimum downtime, and the powered unwind motor overcomes any print compression problems created by label unwinding ensuring perfect barcode quality.





Pallet labelling

Logopak can provide a solution for any pallet labelling requirement. Global standard barcode labels are applied to facilitate the handling and tracking of an item. Designed for continuous operation, our machines cater for labels up to size A4. Labels can be applied on up to 3 sides of the pallet to ensure visibility when the pallet is stored in racking. All labels are applied in real-time and contain a mandatory SSCC (serial shipping container code) barcode.

The top section of the label contains the free format information.

The middle section contains text information and human readable interpretations of the bar codes.

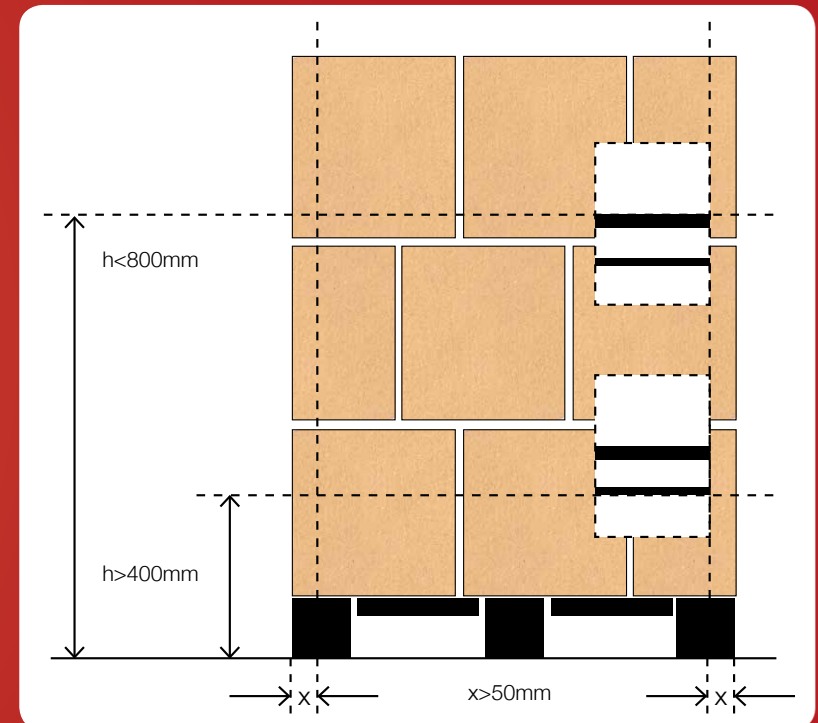
The bottom section includes the bar codes and their associated interpretation. SSCC must be the last.

THE COMPANY LIMITED	
ANY ADDITIONAL INFORMATION	
SSCC 050123450001234563	
Content 05012345678907	Count 110
Use By Batch No. 08.03.14	1234AB
	
(02) 15012345678907 (17) 140308(37) 110	
	
(00) 050123450001234563 (10) 1234AB	



The **Logopak** service team are very good and the sales team are excellent with knowledge beyond belief.

Operations Manager, Icen Waters Ltd.





815 A5 labels up to 2 sides

The **Logopak** 815 pallet labeller is a compact, medium speed labeller with two applications per pallet to comply with GS1 standards. The 815 offers continuous operation for lines where maximum productivity is critical. The 600m label roll is matched with the foil for quick changes.



920 A4 labels up to 3 sides

The **Logopak 920** pallet labeller is a high speed labeller capable of applying up to 3 labels per pallet, to comply with GS1 standards, and holds a class-leading 5500 A5 pallet labels per roll. The 920 DK variant operates at ultra high speeds, up to 240 pallets per hour.



VLP Industrial Printer

The VLP range are heavy-duty offline printers that are compatible with the rest of the **Logopak** range. In the rare event of a breakdown on the line, the VLP can produce a label that can be applied by hand. It is also useful for labelling part-pallets. The latest addition to the range, the VLP 230 is capable of producing A3 labels, making it particularly useful in the paper industry.

All **Logopak** pallet labellers come with steel enclosures and integrated barcode verification and validation.



Mail order

Any product entering the distribution / logistics supply chain requires identification in the form of a barcode label. Predominantly the major carriers enforce the use of barcodes that conform to predefined individual company standards.

Logopak have experience of working with all the major carriers and have label layouts approved and ready to implement for DPD, Parcel Force, Royal Mail and FedEx, Business Post, Amtrak, Home Delivery, UPS and more.

Logopak can supply a range of solutions to Mail Order operations:

- **Standard shipping label.** An A6 label is applied to the side or top of a cardboard or bagged outer.
- **Document inserter.** A document is dropped into the box prior to the box being sealed and a standard shipping label applied.
- **Over-shipping label.** Documents are enclosed within a tear-off shipping label.

One label per unit is acceptable if printed on demand and applied in 'real-time'. Depending on throughput speeds, the **Logopak** 410 and 515 labellers are suitable for mail order.



Logopak have worked with DPD UK in providing print and apply solutions to some of our major clients. On occasions the timescales to deliver the solution to our customers requirements have been aggressive but quality has never been compromised. **Logopak** offer flexible and reliable solutions, the team are extremely knowledgeable and we have always found them extremely helpful.

Technical Support Manager, DPD UK

<small>Damage which cannot be seen from the outside must be notified to Glapost in writing within 7 days.</small>		DPD www.dpd.co.uk	
Perfect Barcodes Ltd 47 Brent Street Long Whinton West Yorkshire, England BX12 4NZ		1 of 1 Con Weight: 15 Kg	
Contact: John Smith Phone: 01904 692333 Additional Info: Deliver to side entrance or loading bay 3 behind reception		Sender: 304024 Euro Distribution Birmingham Depot 4456543/443 Account:	
1550 1900 5423 93 P		NEXT DAY SERVICE	
FR-1234-MRS9		T30	
41		101-FR-13090 DGFRGGYTLQWXCDFRFR1234	
			
0013 0901 5501 9011 2345 6101 250 3			



Documents enclosed shipping Label

This innovation from **Logopak** encloses customer documents within the shipping label, which can then be applied to the mail order package, containing all the information required for both the courier and customer as a single item.

The system works by printing the customer document on a laser printer, which is then passed to a folding machine. The folded document is then passed to an applicator which applies it to the underside of the shipping label, ready to be applied to the package. Once delivered, the shipping label can be peeled back to reveal the customers invoice, returns note or other document.

This system avoids the process of printing, inserting into a plastic wallet, and applying the documents by hand in a time-consuming manual process. The entire operation can be automated, processing as many as 800 items an hour, resulting in significant cost and time savings.



A solution for every application

Case labelling



TB

Short telescope with 'blow on' or low impact press on precision applicator.



B90

No contact high speed 'blow on' applicator. Up to 100 ppm dependent on label size.



T

Telescope application for product at varying heights (top label) or width (side label).



F

High speed carbon fibre applicator for front application (above).



F90

High speed carbon fibre applicator for front application (side).

Pallet labelling



PF

Single telescopic applicator that can apply labels to the side surface as well as the front surface (two stop positions required).



DK

Dual telescopic applicators that can apply in sync to the front and side surface at the same time - high speed application (one stop position required).

Special projects

Logopak can customise their machinery to perform with ease in difficult or challenging situations. Whether the environment is dirty, dusty, hot, or cold we can supply an enclosure that will deal with the situation. In addition, we have a comprehensive range of over 50 applicators to provide the answer to any complex print and apply application challenges.

Bespoke systems

Logopak's development team in Germany can design and manufacture complete bespoke solutions, including conveyors, controls and software. They will develop a solution for a specific requirement and provide the end user with a simulation concept to be approved prior to build. Once the design is approved a prototype is constructed that is then exposed to rigorous testing with live products and data.

Case study

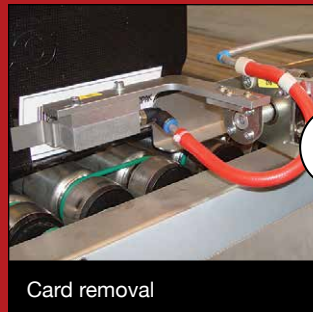
This Co-op system is an example of the bespoke system design in which **Logopak** excels. Instead of a traditional pallet label, the Co-op needed a card that could be inserted into the re-usable transit crates they use to transport product to their stores.

Logopak developed a solution where information which would typically be printed on a label, (barcode, transit and store information) was printed on a card, which was then guillotined and inserted into a slot on the side of the re-useable crate.

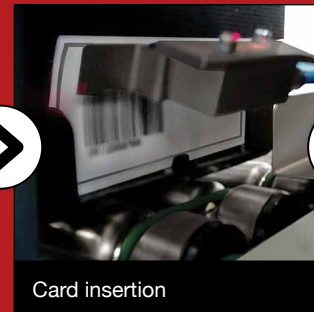
When the crates are returned, they go to the picking area to be refilled and labelled,

however some crates were being returned with old cards still in place. Because this area of the operation is totally automated, another checking process was needed to assess whether the card slot was empty prior to entering the 'pick face'.

Logopak developed an addition to the line which includes a scanner to check if the card slot is empty when the crates are returned to the line. If the scanner detects a barcode is present, an automated arm removes the card before the crate continues along the line to the picking area to be filled, and a new card inserted.



Card removal



Card insertion



Returnable transit crate with card inserted

Verification and Validation

Barcode validation and barcode verification are two important factors in ensuring best practice with barcodes, but the two terms are often misunderstood.

Validation vs. Verification - a simple definition.

Barcode validation refers to the process of ensuring the correct barcode is applied to the correct product.

Barcode verification is the measuring and grading of the quality of a printed barcode to the highest ISO standards.

Why is it important?

With barcoded product often making its way through multiple scanning points along the supply chain, it is not uncommon for disputes to arise between suppliers and customers over the quality of printed barcodes. Many companies will impose fines to suppliers who supply them with product that is labelled with poorly printed or unreadable barcodes.

Vericoder - the new integrated verifier from Logopak makes manual verification checks a thing of the past.

Barcode Validation

Typically, barcode readers such as Erwin Sick's CLV410 are positioned on the production line reading point of sale, TUC and GS128 pallet labels. The content of the barcode is transmitted from each scanner to control software such as **Logopak's** Ivalidate. This software then compares the barcode data with the production data downloaded from the factory manufacturing information system.

All **Logopak** labelling machines are equipped with barcode validation scanners to ensure that any barcode label applied is decodeable and matches the current product. However, as the barcode readers cannot determine barcode quality, they cannot be classed as verifiers.



Vericoder

The worlds first integrated verifier.

Barcode verification is essential to ensure barcode labels are legible at every point in the supply chain. Traditionally, manual checks were implemented to check quality at regular intervals. With the **Logopak** Vericoder these checks are carried out automatically to ISO or ANSI standards as part of the labelling process. Every label is automatically checked as it is applied.

The Vericoder replaces scientific instruments with an industrial-quality unit using technology licensed from verification experts Axicon. Removing the need for calibration, controlled lighting conditions and manual intervention, the system checks every label, ensuring 100% quality, thus avoiding the risk of substantial penalty fines from retailers.

Vericoder provides full evaluation of the barcode characteristics laid down by the ISO standards. It reads the black and white bars but then goes on to evaluate characteristics such as nominal/actual print contrast signal, light and dark reflectance, ratio and magnification variation, check-sum analysis and metric deviations. From all this information, a quality grading is given, as well as diagnostic data for remedial action should a barcode fail to meet the minimum standard set.



Vericoder controller showing real-time display of label quality.
The verification process conforms to the ISO/IEC 15426-1 standard.

Software

Powerful, flexible, scalable.

Logopak are leaders in the development of PC-based industrial software solutions, and they form an integral part of our complete solution.

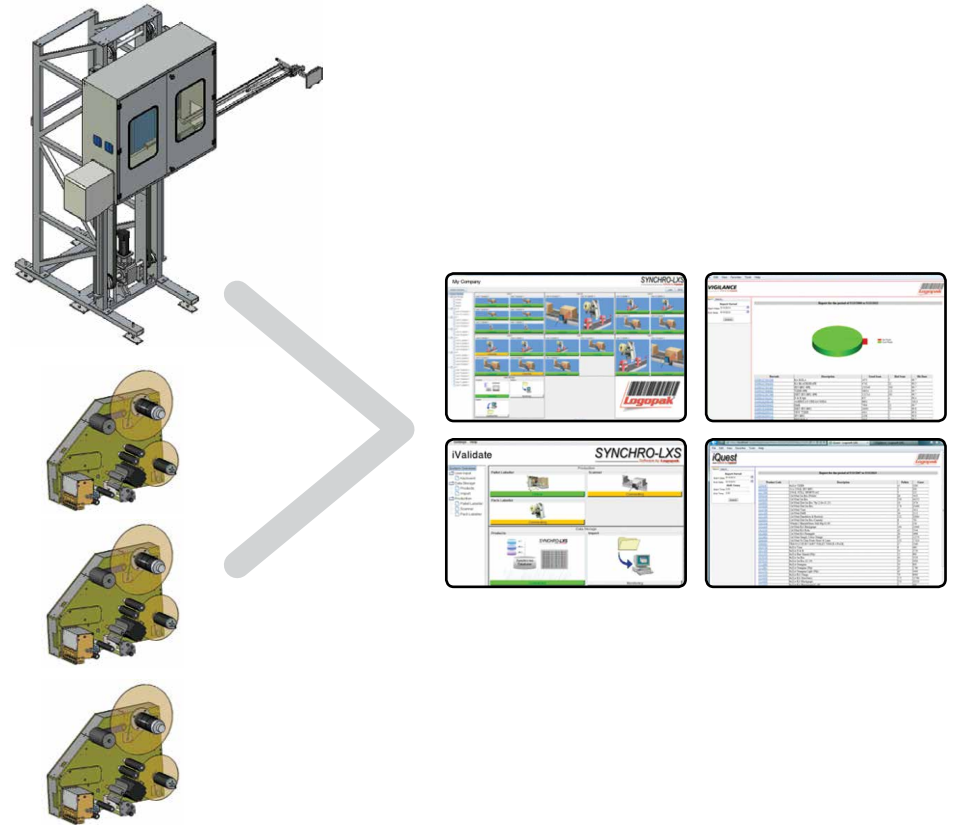
Synchro is the core component of the Logopak software suite. Its role is to co-ordinate the print and apply process with a highly adaptable and flexible set of interfaces. It is capable of communicating with multiple Logopak printers, barcode scanners, PLC's and MS-SQL Server databases. Data for label generation can be supplied via configurable ASCII interfaces, directly from SQL databases, or input manually if preferred. The clean user interface provides a simple overview of all your active communications.



Since installing 27 **Logopak** print and apply labelling machines in 2009 we have enjoyed excellent reliability and print quality. We have extremely low cost of ownership due to impressive print head life and low maintenance requirements.

Our product information is fed automatically to the **Logopak** removing the need for human intervention and costly programming time. Our high value product means that we can't afford any line downtime due to machine failures. **Logopak** have proved to be as truly reliable as we had hoped.

Shift Operations Manager, Chivas Brothers Ltd



Data recall can be achieved via the following methods:

- Handheld or fixed line barcode reader
- Manual recall via labeller touch-screen, or PC screen
- ID strings from a 'look-up' pallet scanner or PLC

Additional software modules provide a barcode validation suite, and tools to query data, produce reports, and ensure consistency in product identification. These modules work together giving a suite of products essential for the production environment, preventing barcode issues from escalating into costly fines and returned product, and allowing traceability throughout the distribution network.



Synchro

Powerful and flexible, can be scaled to suit multiple labelling systems either in batch or real-time. Capable of connecting to ERP/WMS system and providing a local product information database.

iQuest

Allows the user to query production data and generate reports. Instant searches to generate production statistics and allow case-level traceability of product.

iVigilance

Provides a barcode validation suite to monitor barcode integrity and provide a detailed report of good / bad reads.

iValidate

Checks product, case and pallet labels against original documentation, eliminating risk of goods with incorrect or illegible label entering the supply chain.

SAP integration

Synchro-SAP software allows Logopak pallet labellers to integrate directly with SAP factory management systems to access label data.



Exceptional service



During 2011, we radically changed the structure of our maintenance agreements in order to provide our customers with an exceptional level of service. Historically, servicing labelling machinery meant an annual site visit, with 4 -5 hours maintenance needed per machine / per visit to replace all 'wear and tear' parts. This was purely driven by the fact that we had to be sure that all parts were able to last a full 12 months until the next annual visit.

After analysing the wear patterns of the various 'wear & tear' components, what became clear was that due to the different mechanical stresses on the individual belts, some wore out far more quickly than others. Thus, certain parts of the machine ideally needed inspection more frequently than once a year. However, the down side of this was that increasing the number of service visits was costly, especially when travelling long distances to customer's sites.

Undeterred, and certain that more frequent visits would prove greatly beneficial to our customer base, **Logopak** equipped its fleet of service vehicles with a class-leading vehicle tracking system. By grouping customers with similar geographical locations, and monitoring vehicle routes, it allows us to forward plan more frequent service visits, while at the same time drastically cutting travelling distances. This cost saving is passed directly onto the customer in the form of 3-monthly, or 6-monthly visits, instead of single annual visits, but at comparable costs.

The benefits of this new service model immediately became apparent. No longer does each visit require a complete machine disassembly – we can afford to replace only certain high-wear parts, knowing that it is no longer a full 12 month cycle until the next visit. Consequently, the time spent onsite is driven only by the condition of the machines and the maintenance that they require on that day. It's completely flexible, both in terms of the length of visit, and the amount of work carried out to each machine at any one time.



Consumables

Our thermal transfer labels and foils are manufactured to give the best possible print quality of barcodes and to assist in automated scanning & verification in the distribution chain.

We apply the same philosophy to our thermal transfer labels and foils as we do to our market-leading print and apply machines. We expect the best, and we only supply the best. Our thermal transfer labels and foils match the quality of our machines.



Thermal Transfer Labels

Logopak supply high quality, bespoke labels for both Thermal Transfer (in conjunction with our solvent-free printing foils) and Direct Thermal printing. They are manufactured from the best available self-adhesive materials, sourced from leading European suppliers.

Our thermal transfer labels are supplied on heavy duty 8mm thick cores for stability and to prevent crushing. As standard we also have a 1 metre lead of blank liner on every reel to ensure minimum down time during reel changes.

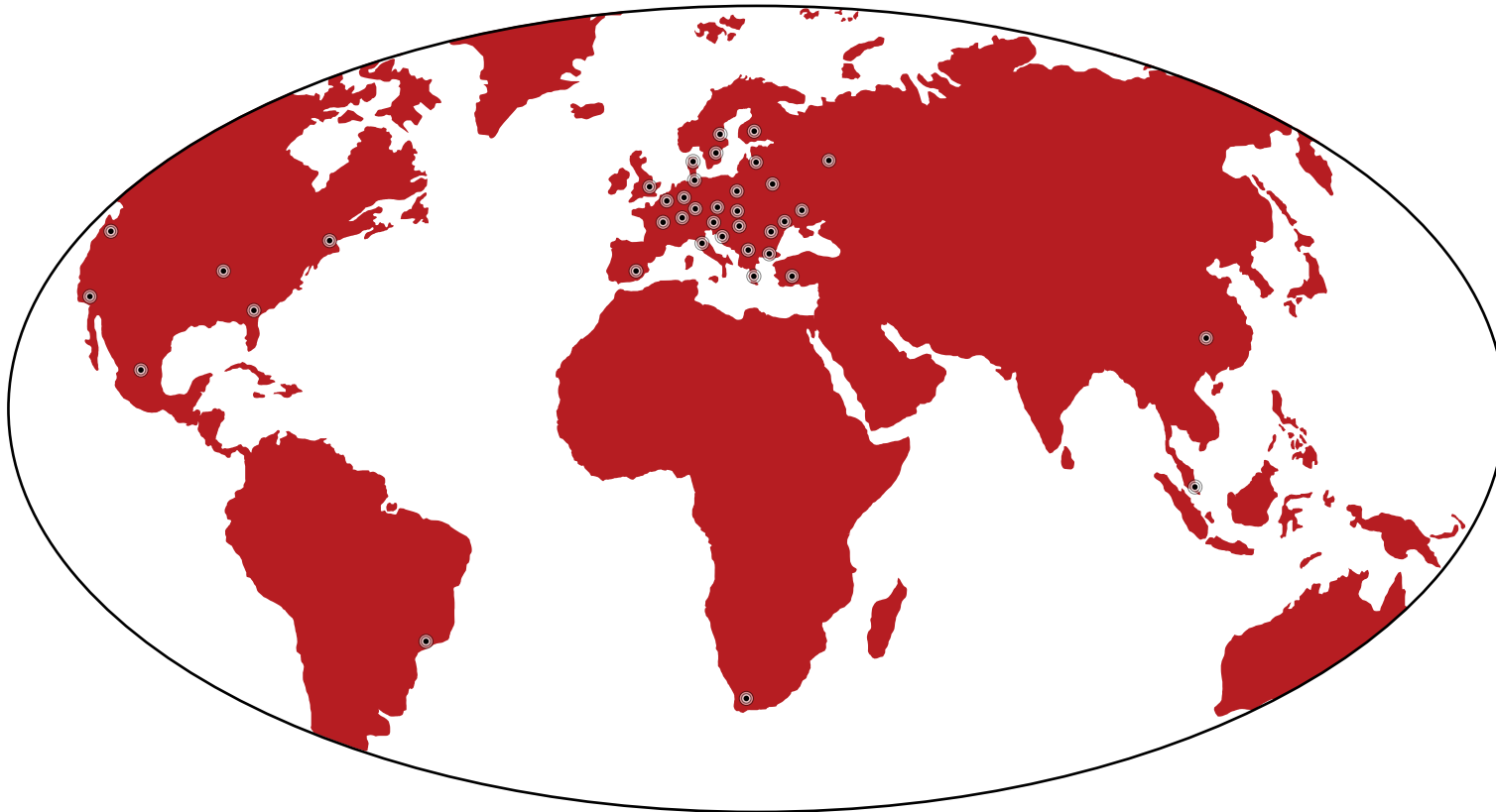
Printing Foils

As well as thermal transfer labels, we also supply high quality, solvent-free thermal transfer printing foils. These are to our unique formulation and are exclusive to **Logopak**. They have our own pre-printed 'lead in' tape, so you know you're getting a genuine **Logopak** product and have robust plastic cores, with a spare for waste rewinding.

We stock a wide range of standard sizes ranging from 75mm to 210mm in width and 300m to 800m in length, and always tailor these to fit with your label reels for ease of use – 1 roll of foil prints one roll of labels. All foils are also supplied with a **Logopak** pull-through card to thread up the printing foils with minimal fuss.

Waste Label Liner Collection

For bulk label users **Logopak** can arrange to collect your waste label liner every time we make a new delivery. Labels are supplied with minimal packaging and are delivered in our exclusive robust **Logopak** storage pallets. When you've used the labels, simply place the waste liner back in the pallet and we'll take it away for you.



Logopak International Ltd

Enterprise House • George Cayley Drive • Clifton Moor Industrial Estate • York • YO30 4XE • United Kingdom
Tel +44 (0) 1904 69 23 33 Fax +44 (0) 1904 69 07 28

www.logopak.co.uk