

HEI SERIES BAGHOUSE



CSL



CAROTHERS AND SON, LTD.
INDUSTRIAL SYSTEMS

HEI SERIES BAGHOUSE

- Exceptional Performance
- High Entry Inlet Design
- Pulse Jet Bag Cleaning
- Valves Located Inside
- Top Load and Side Load Bags Available
- Various Fabrication Materials Available:
Carbon Steel, Stainless Steel and Aluminium
- Competitively Priced from 5,000 CFM to 100,000 CFM
- High Temperature and Process Gas Models Available
- Cost Efficient Integral Fan Mounting Design Available

www.cslsystems.com

CAROTHERS AND SON, LTD.
P.O. Box 2709, Eugene, OR 97402

Phone: (541) 484-4270
Fax: (541) 484-5681



CAROTHERS AND SON, LTD.
INDUSTRIAL SYSTEMS

HEI SERIES BAGHOUSE

HEI FILTER | High Entry Inlet

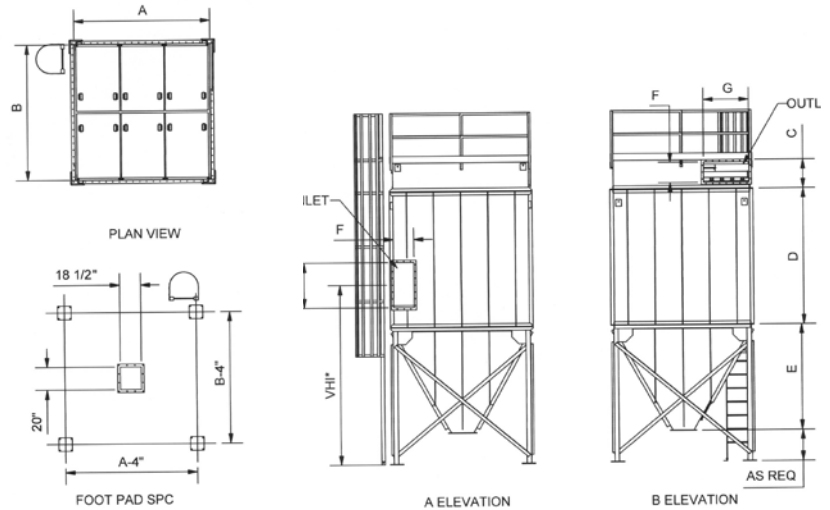
STANDARD SPECIFICATIONS

- High Entry Inlet
- Internal Valves
- Hinged Lift Open Doors
- Pulse Jet Filter Cleaning
- Carbon Steel Construction
- Access Ladder and Top Handrail
- Variable Height Inlet*
- Top Removal Snapband Bags
- Fold Down Handles
- Bottom Access Door

OPTIONAL FEATURES

- Explosion Relief Panels
- Plug Sensors
- Alternate Bag Materials
- Alternate Construction Materials
- Alternate Surface Coatings

Note: • All Dimensions are in Inches
• All Dimensions are subject to Change



FILTER MODEL	FT ² OF CLOTH		DIMENSIONS							
	120" BAGS	144" BAGS	A	B	C	D(10')	D(12')	E	F	G
100 TR (10) (12) HEI	1570	1884	120	102	25	120	144	90	22	48
120 TR (10) (12) HEI	1884	2261	120	111	25	120	144	90	22	48
130 TR (10) (12) HEI	2041	2449	120	120	25	120	144	90	22	48
140 TR (10) (12) HEI	2198	2638	120	129	25	120	144	96	22	48
150 TR (10) (12) HEI	2355	2826	120	138	25	120	144	108	22	48
160 TR (10) (12) HEI	2512	3014	120	147	25	120	144	114	22	48
170 TR (10) (12) HEI	2669	3203	120	156	25	120	144	120	22	48
180 TR (10) (12) HEI	2826	3391	120	165	25	120	144	126	22	48

HEI FILTER | High Entry Inlet

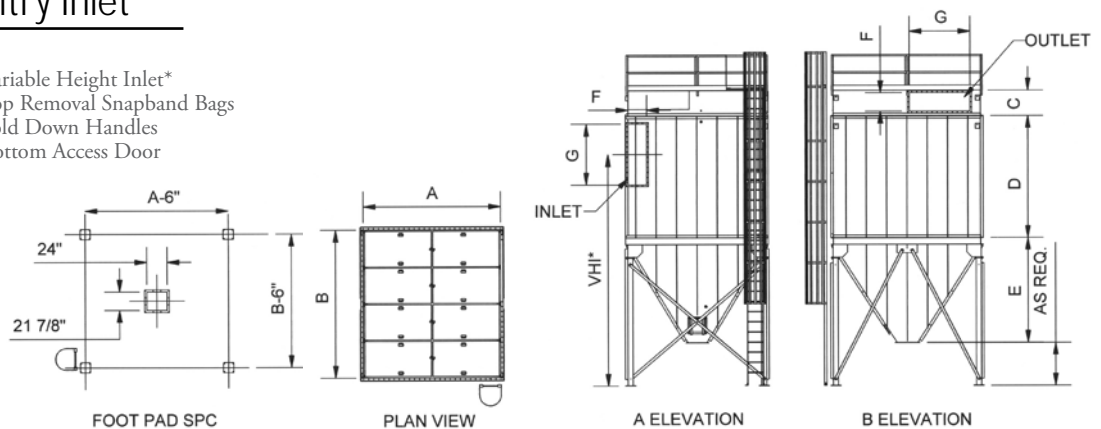
STANDARD SPECIFICATIONS

- High Entry Inlet
- Internal Valves
- Hinged Lift Open Doors
- Pulse Jet Filter Cleaning
- Carbon Steel Construction
- Access Ladder and Top Handrail
- Variable Height Inlet*
- Top Removal Snapband Bags
- Fold Down Handles
- Bottom Access Door

OPTIONAL FEATURES

- Explosion Relief Panels
- Plug Sensors
- Alternate Bag Materials
- Alternate Construction Materials
- Alternate Surface Coatings

Note: • All Dimensions are in Inches
• All Dimensions are subject to Change



FILTER MODEL	FT ² OF CLOTH		DIMENSIONS							
	120" BAGS	144" BAGS	A	B	C	D(10')	D(12')	E	F	G
195 TR (10) (12) HEI	3062	3674	162	120	25	120	144	120	22	48
210 TR (10) (12) HEI	3297	3956	162	129	25	120	144	120	22	48
225 TR (10) (12) HEI	3533	4239	162	138	25	120	144	120	22	60
240 TR (10) (12) HEI	3768	4522	162	147	25	120	144	120	22	60
255 TR (10) (12) HEI	4004	4804	162	156	25	120	144	120	22	60
270 TR (10) (12) HEI	4239	5087	162	165	25	120	144	120	22	72
285 TR (10) (12) HEI	4475	5369	162	174	25	120	144	132	22	72
300 TR (10) (12) HEI	4710	5652	162	183	25	120	144	138	22	72