



PROFILATRICI
ROLL FORMERS
PROFILEUSES
PROFILIERMASCHINEN

F.M.S.
F.M.S.
F.M.S.
F.F.S.

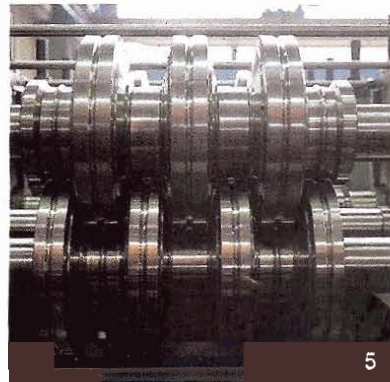
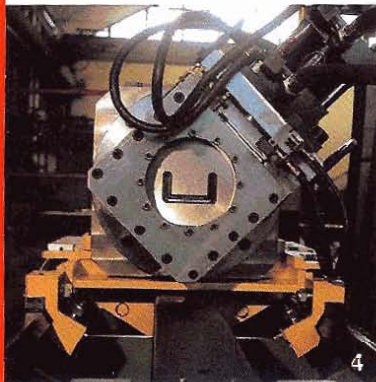
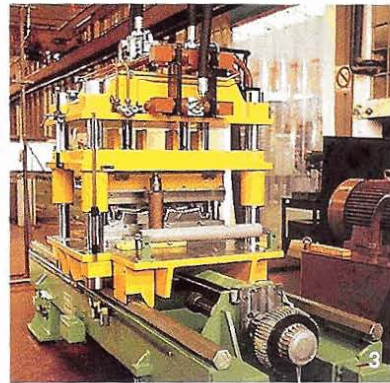
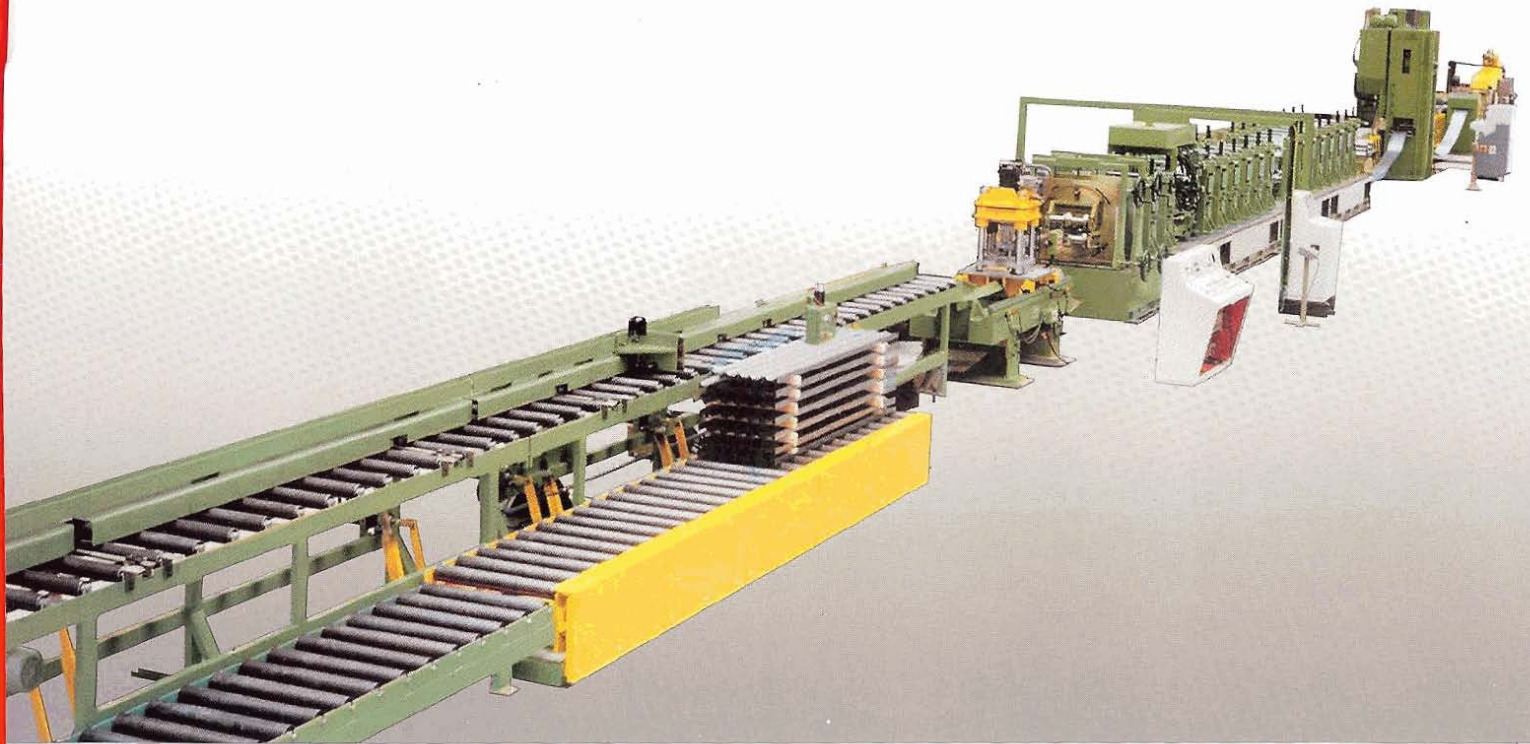


LINEE DI TAGLIO IN FOGLI
CUT-TO-LENGTH LINES
LIGNES DE CISAILLAGES
QUERTEILANLAGEN

LINEE DI TAGLIO IN STRISCE
SLITTING LINES
LIGNES DE REFENDAGE
LÄNGSTEILANLAGEN

MACCHINE SPECIALI
SPECIAL MACHINES
MACHINES SPECIALES
SPEZIALMASCHINEN

STAM s.p.a.
Via Piave, 6
31050 Ponzano Veneto (TV) - Italia
Telefono ++39/0422/440100
Telefax ++39/0422/440137
e-mail: stam@stam.it
www.stam.it

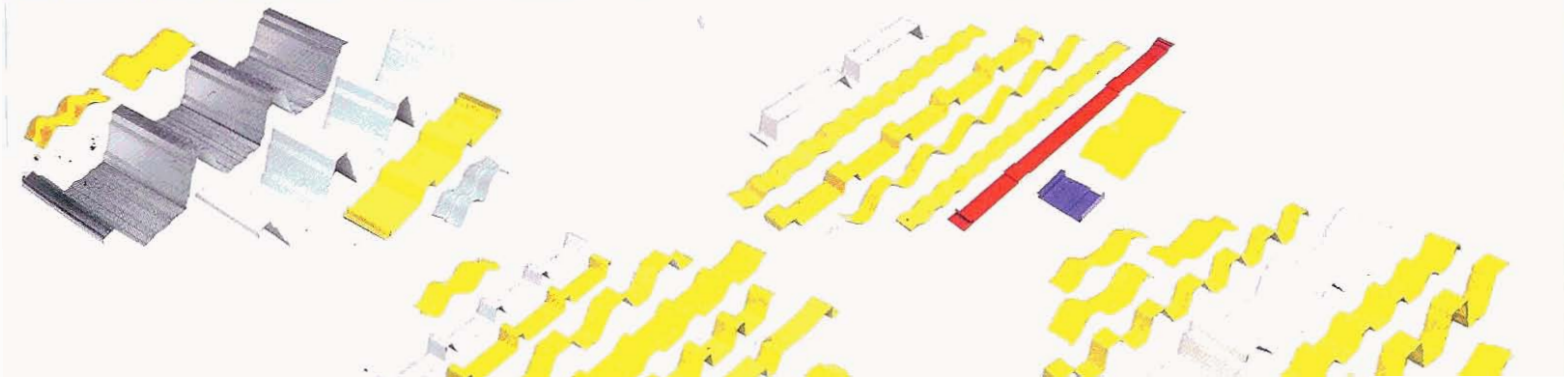
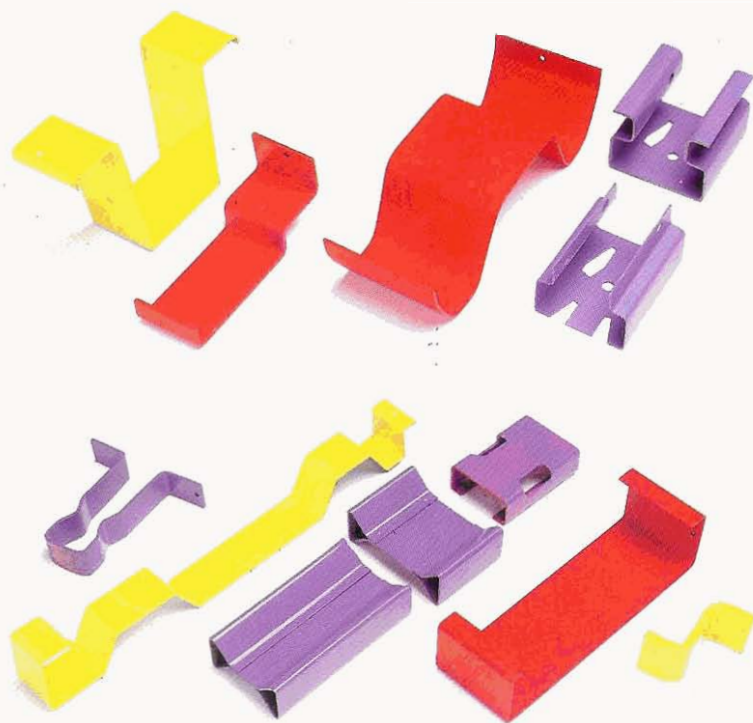


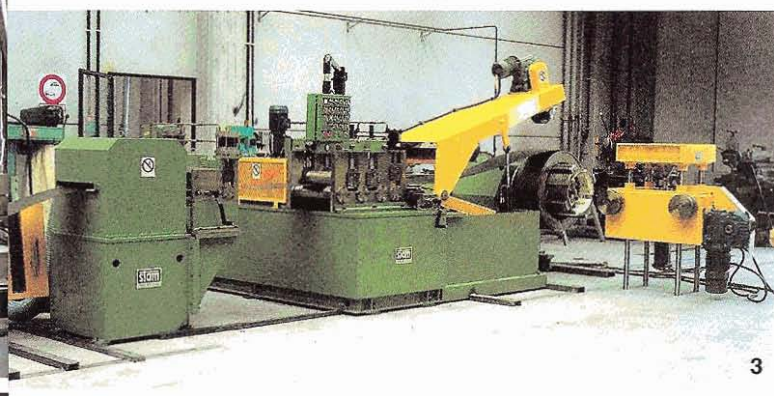
- 1 - Impianto di profilatura per scaffalature portapallet
- 2 - Troncatrice volante a controllo numerico
- 3 - Pressa volante a controllo numerico
- 4 - Cesovia volante a controllo numerico
- 5 - Particolare di rulli sagomatori
- 6 - Profilatrice con regolazione idraulica (brevettata)
- 7 - Profilatrice con regolazione assiale degli alberi
- 8 - Impianto di profilatura

- 1 - Rollforming line for pallet racking
- 2 - N.C. flying cut-off saw
- 3 - N.C. flying cut-off press
- 4 - N.C. flying shear
- 5 - Close-up of forming rolls
- 6 - Rollformer with hydraulic adjustment (patented)
- 7 - Roll former with axial regulation
- 8 - Heavy duty rollforming line, up to 10 mm thickness
- 9 - Rollforming line for trapezoidal sheets
- 10 - Rollforming line for

- 1 - Ligne de profilage pour rayonnage portepalettes
- 2 - Tronçonneuse à la volée à contrôle numérique
- 3 - Presse de coupe à la volée à contrôle numérique
- 4 - Cisaille volante à contrôle numérique
- 5 - Jeu de galets, détail
- 6 - Profileuse avec réglage hydraulique (breveté)
- 7 - Profileuse avec réglage axial des arbres
- 8 - Grosse ligne de profilage pour épaisseurs jusqu'à

- 1 - Profilieranlage für Palettenregal
- 2 - Fliegende Trennmaschine mit NC-Steuerung
- 3 - Fliegende Presse mit NC-Steuerung
- 4 - Fliegende Schere mit NC-Steuerung
- 5 - Details von Profilerollen
- 6 - Profiliermaschine mit hydraulischer Einstellung (patentiert)
- 7 - Profiliermaschine mit Axialeinstellung der Wellen
- 8 - Schwere Profilieranlage



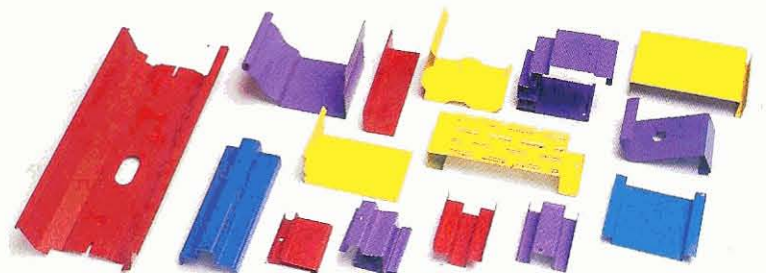
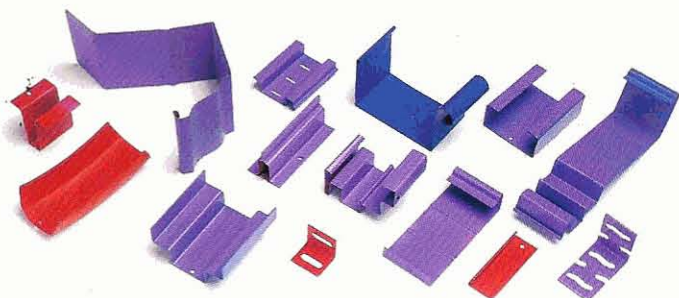
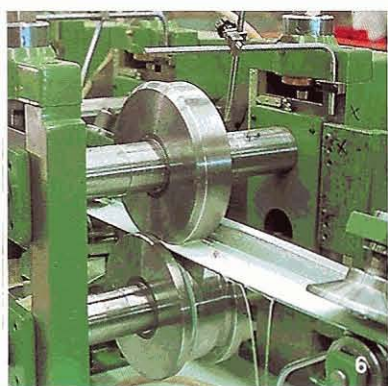


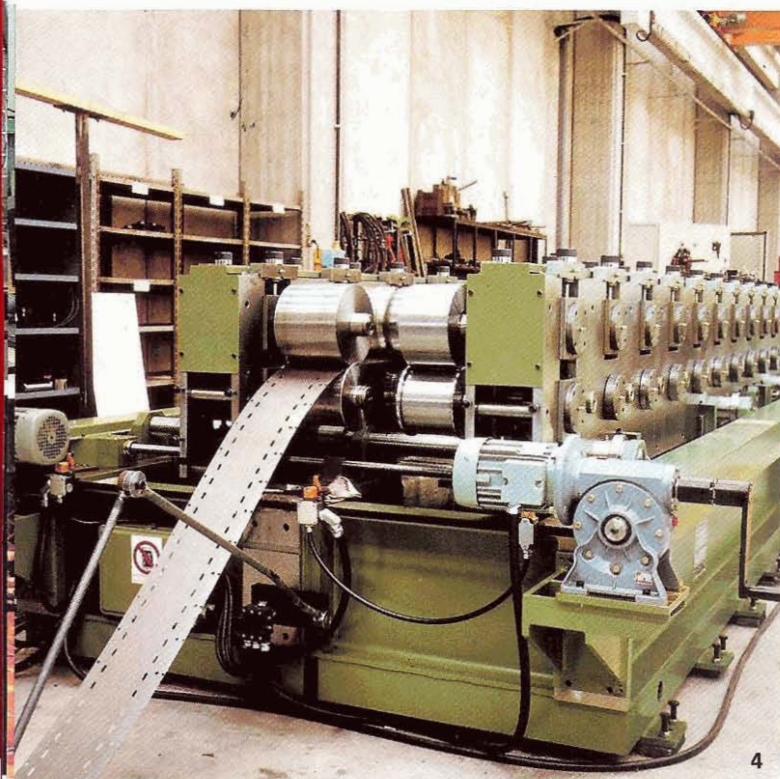
- 1 - Linea di profilatura per travi saldate
- 2 - Profilatrice per serramenti metallici
- 3 - Gruppo di svolgitura coil
- 4 - Impilatore per lamiera grecate
- 5 - Punzonatrice e cesoia volante a controllo numerico
- 6 - Particolare di rulli sagomatori
- 7 - Profilatrice per lamiera grecate

- 1 - Rollforming line for welded beams
- 2 - Roll former for window frames
- 3 - Uncoiling equipment
- 4 - Stacker for trapezoidal sheets
- 5 - N.C. flying punching and shearing machine
- 6 - Close-up of forming rolls
- 7 - Rollforming line for trapezoidal sheets

- 1 - Ligne de profilage pour poutres soudées
- 2 - Profileuse pour menuiseries métalliques
- 3 - Equipement de déroulage
- 4 - Empileuse pour bardages et éléments de toiture
- 5 - Poinçonneuse et cisaille volante à contrôle numérique.
- 6 - Jeu de galets, détail
- 7 - Ligne de profilage pour bardages

- 1 - Profileranlage für geschweisste Träger
- 2 - Profilermaschine für Metallfenster
- 3 - Abwickelgruppe
- 4 - Stapler für Trapezbleche
- 5 - Stanze und fliegende Schere mit NC-Steuerung
- 6 - Detail von Profilerrollen
- 7 - Profilermaschine für Trapezbleche



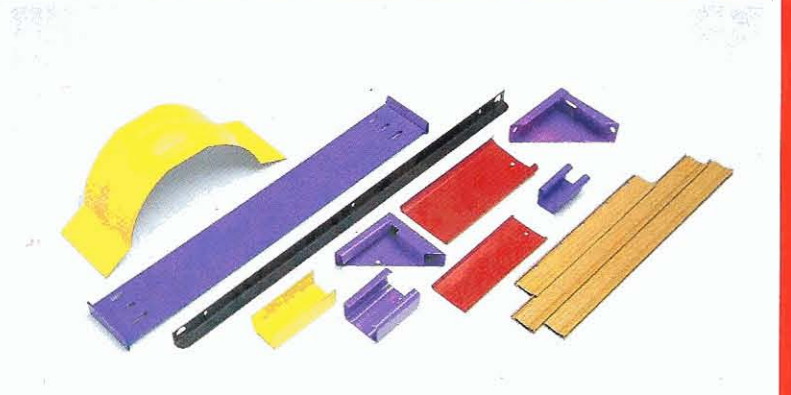
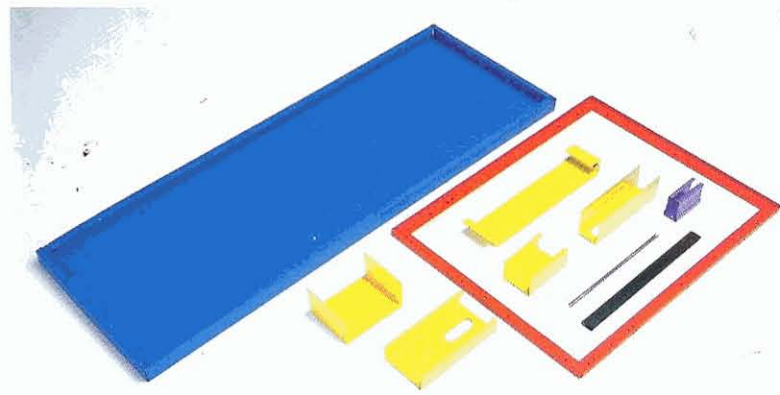


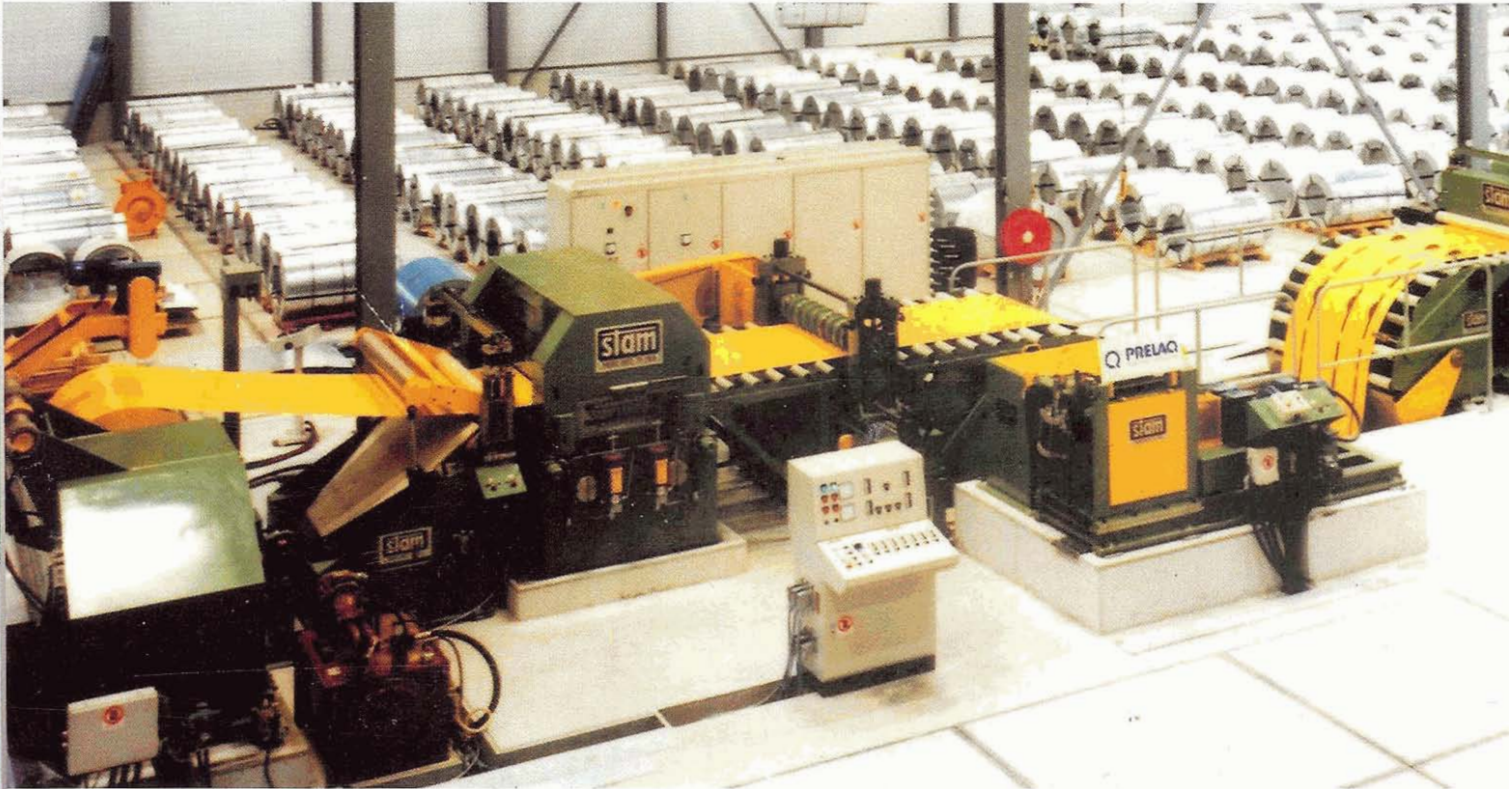
- 1 - Profilatrice leggera con cambio teste
- 2 - Profilatrice doppia per pannelli
- 3 - Cesovia volante
- 4 - Profilatrice per montanti di scaffalature
- 5 - Linea di lavorazione da fogli
- 6 - Scaffali
- 7 - Impilatore per profilati

- 1 - Light rollformer with quick-change group
- 2 - Twin head rollforming machine
- 3 - Flying shear
- 4 - Rollforming machine for uprights
- 5 - Shelf line (entry section)
- 6 - Shelves
- 7 - Stacker for sections

- 1 - Profileuse à changement rapide des têtes
- 2 - Profileuse double pour panneaux
- 3 - Cisaille volante
- 4 - Profileuse pour rayonnages
- 5 - Ligne de tablettes à partir de flans
- 6 - Tablettes
- 7 - Empileuse pour profilés

- 1 - Leichte Profiliermaschine mit Schnellwechslergerüsten
- 2 - Doppelte Profiliermaschine zur Paneelenherstellung
- 3 - Fliegende Schere
- 4 - Profiliermaschine für Regalständer
- 5 - Bearbeitungsanlage mit zugeschnittenen Blechtafeln als Eingangsmaterial
- 6 - Regale
- 7 - Stapler für Profilen





- 1 - Linea di taglio in fogli 1500x2
- 2 - Gruppo avvolgimento coil
- 3 - Linea di taglio in fogli 1300x3
- 4 - Spianatrice ad alto rendimento
- 5 - Linea di taglio in fogli 1500x3
- 6 - Gruppo di rifilatura

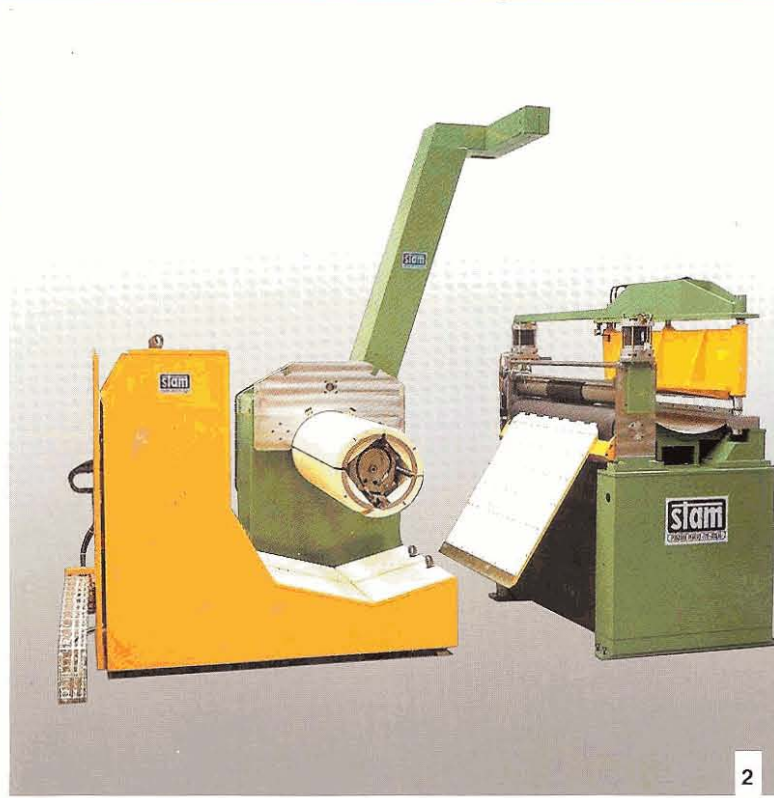
- 1 - Cut-to-length line 1500x2
- 2 - Recoiling equipment
- 3 - Cut-to-length line 1300x3
- 4 - High precision levelling machine
- 5 - Cut-to-length line 1500x3
- 6 - Edge trimming machine

- 1 - Ligne de planage 1500x2
- 2 - Group d'enroulage bobines
- 3 - Ligne de coupe à longueur 1300x3
- 4 - Planeuse de precision
- 5 - Ligne de coupe à longueur 1500x3
- 6 - Deriveuse

- 1 - Querteilanlage 1500x2
- 2 - Coillautwickeinheit
- 3 - Querteilanlage 1300x3
- 4 - Hochleistungs-Präzisionsrichtmaschi
- 5 - Querteilanlage 1500x3
- 6 - Beschnideeinheit



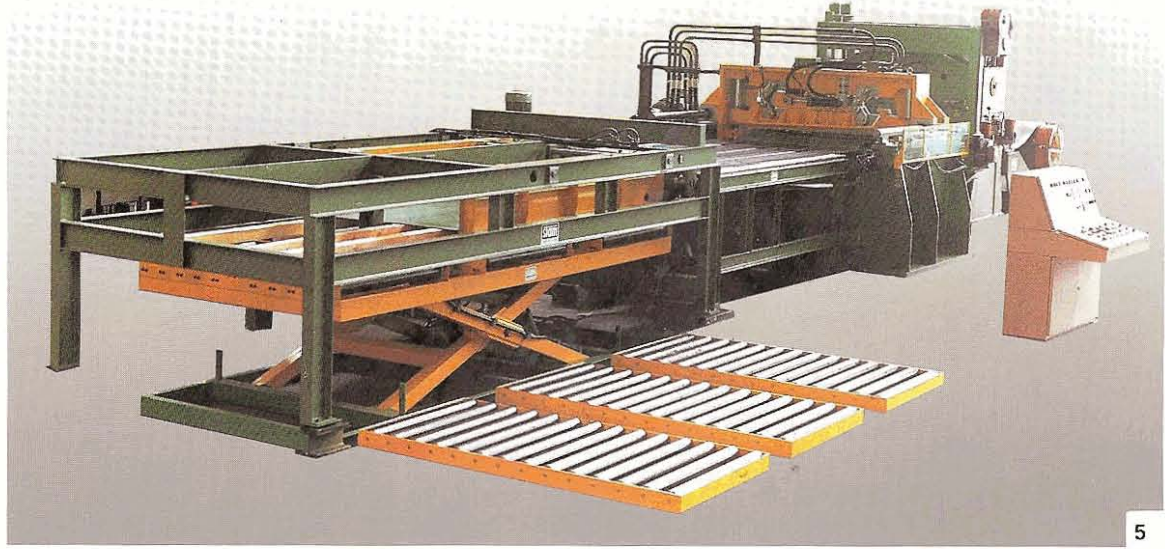
1



2

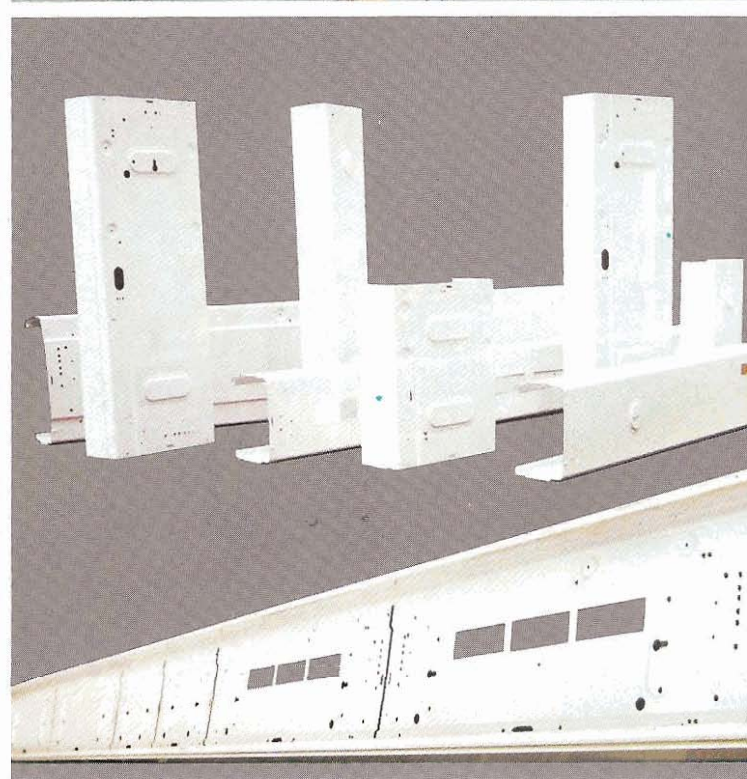
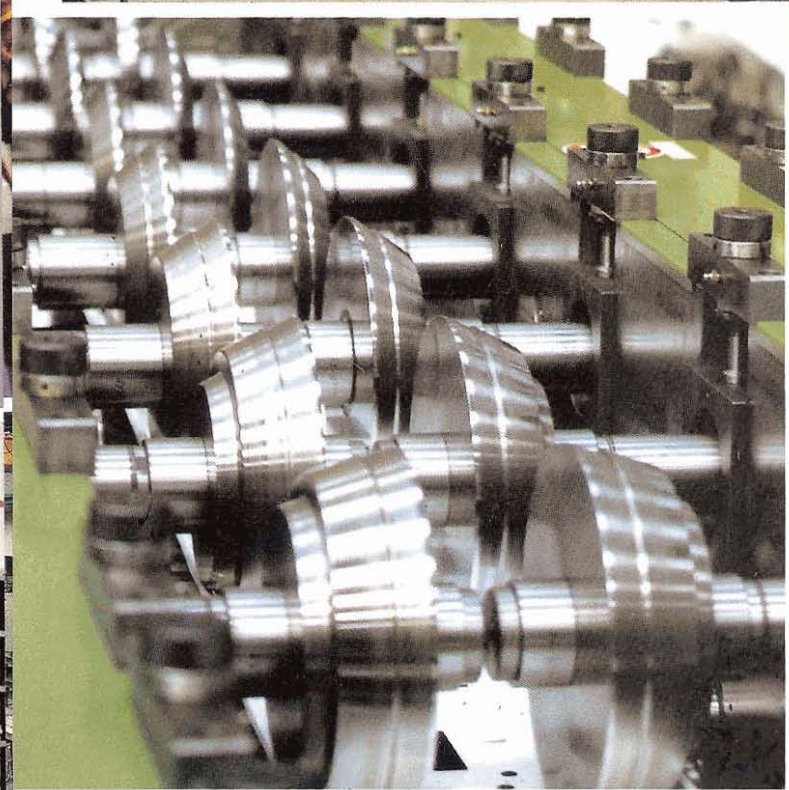
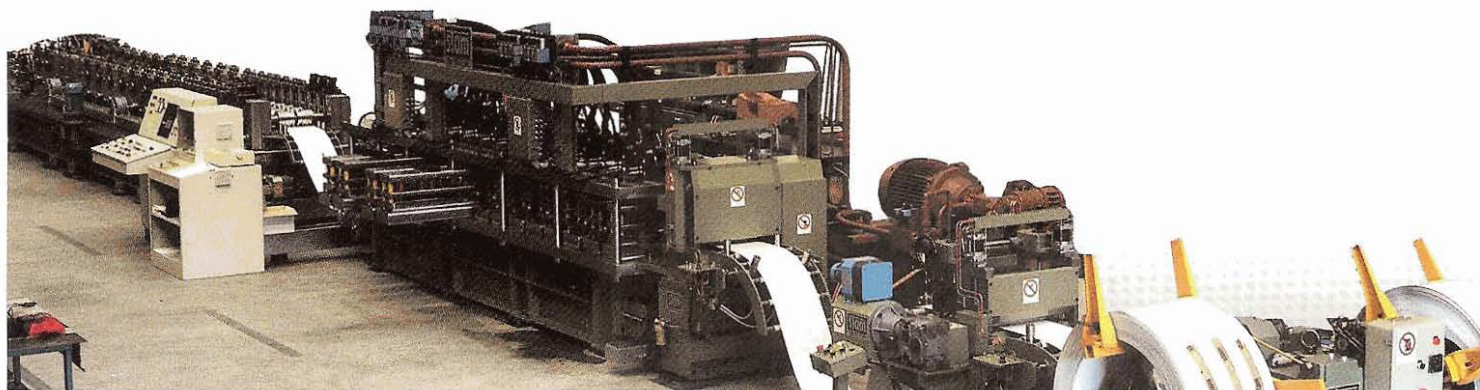


4



5





pag. 10

- Linea flessibile per plafoniere da coil preverniciato spessore 1 mm.

pag. 11

- Impianto flessibile per la produzione di armadi elettrici, da fogli di spessore 1.25 mm, acciaio dolce o inossidabile, produzione: da 1 a 2 pezzi/min. a seconda del tipo di prodotto.

page 10

- Flexible equipment for light fittings, from prepainted strip, 1 mm thickness.

page 11

- Flexible equipment for production of enclosures, starting from sheets, 1.25 mm thick in mild steel, or in stainless steel, output: 1 to 2 pcs per minute depending on the piece model.

page 10

- Installation flexible pour reflecteurs de rampe d'éclairage à partir de bobines prélaquées de 1 mm d'épaisseur.

page 11

- Installation flexible pour coffrets électriques, partant de plans en acier normal ou inoxydable ayant épaisseur 1.25 mm, production: 1 ou 2 pcs/min. selon le model.

S. 10

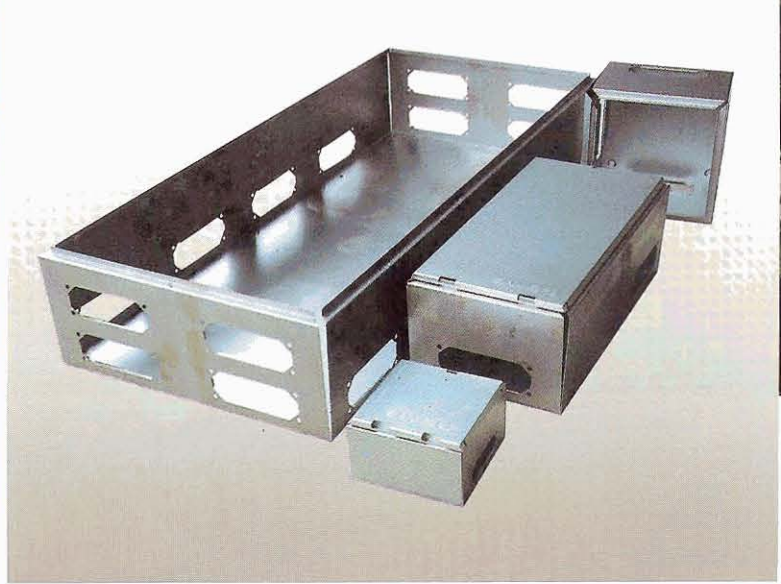
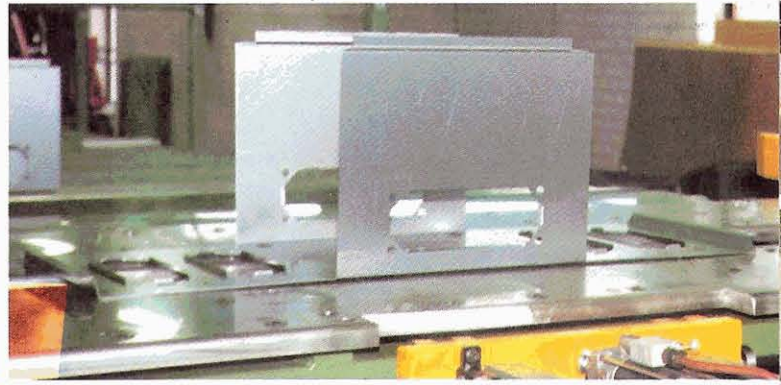
- Flexible Arbeitsstrasse zur Herstellung von Deckenleuchten aus vorlackiertem Coil, Stärke 1 mm

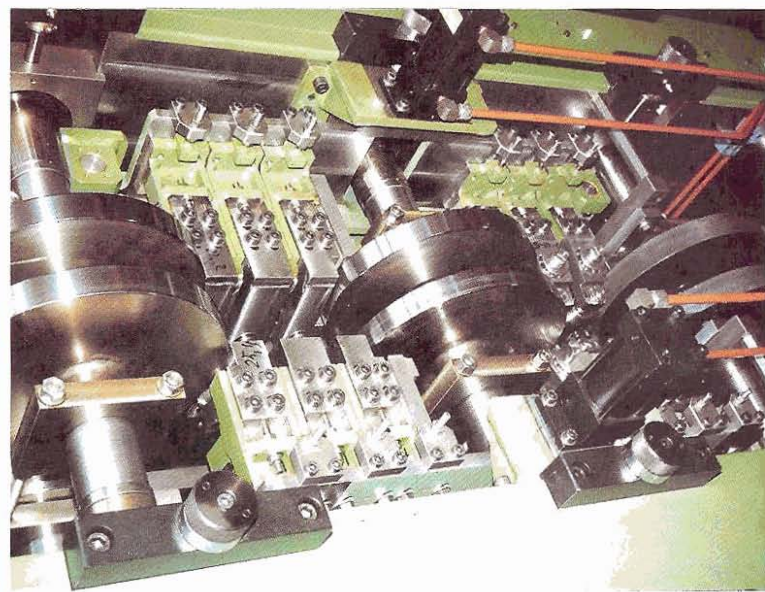
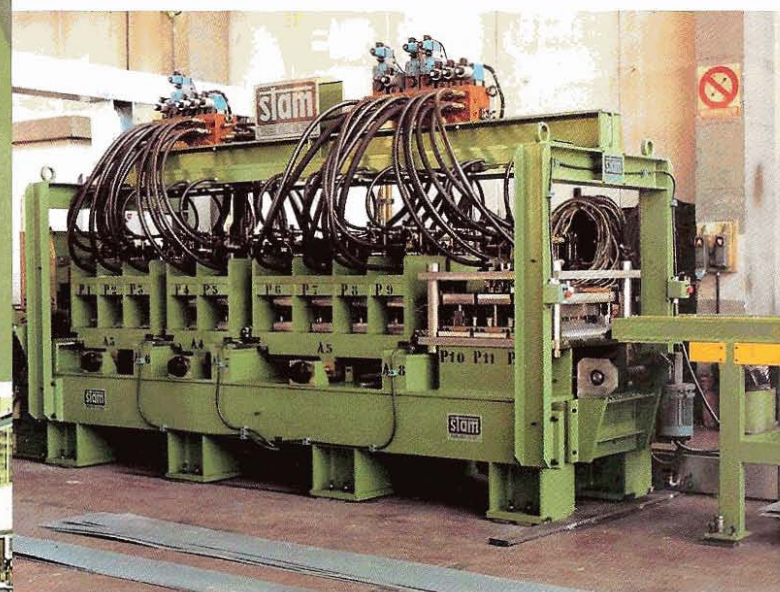
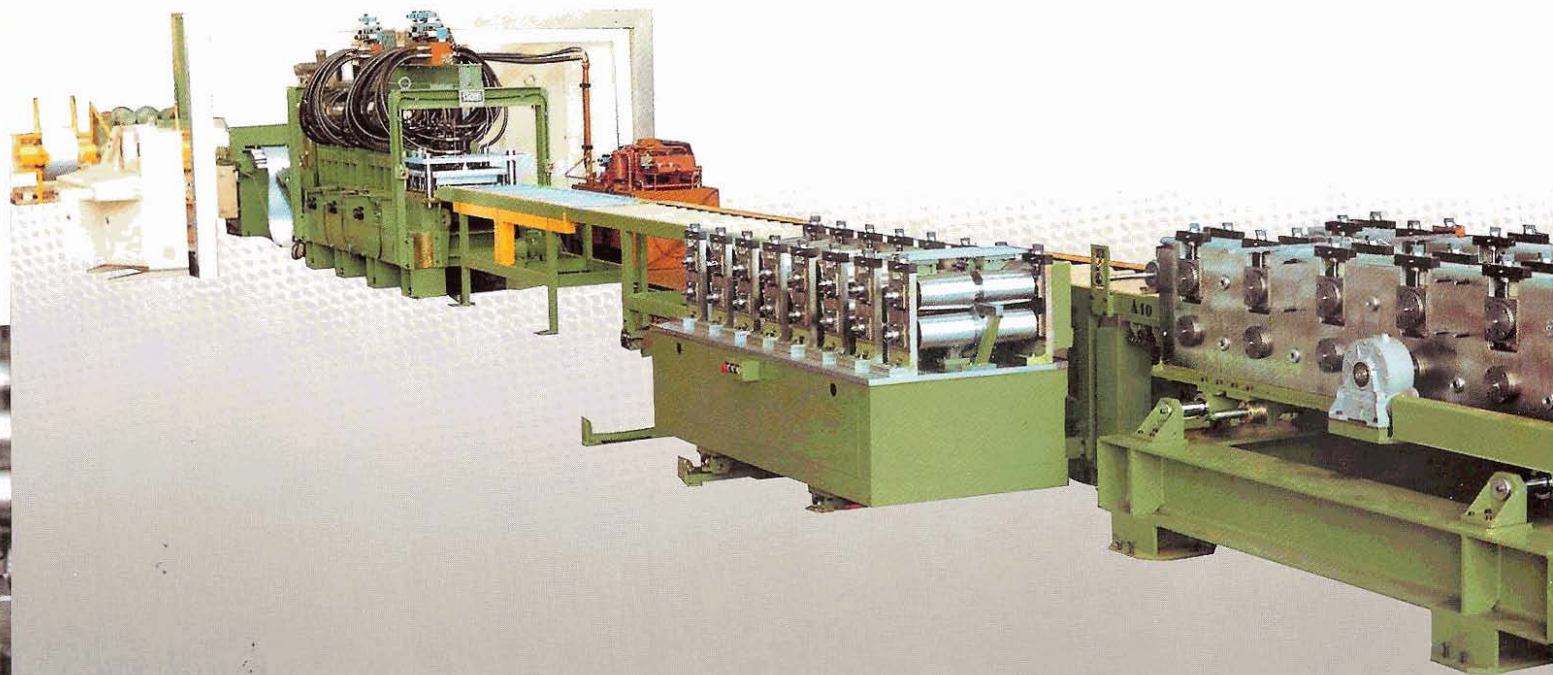
S. 11

- Flexible Anlage zur Herstellung von Schaltschränken aus 1,25 mm dicken kaltgewalzten Stahlblechen oder aus Edelstahl
Produktion: 1 - 2 Stück/Minute

F.M.S.

FFS.





pag. 12

- Linea flessibile per la produzione di profili forati, di lunghezza, larghezza, altezza, variabili.

page 12

- Flexible equipment for the production of pierced and notched channels, having variable length, width, height.

page 12

- Ligne flexible pour la production de profils, poinçonnés ayant longueur, largeur hauteur sélectionnables.

S. 12

- Flexible Arbeitsstrasse zur Herstellung von gelochten Profilen, mit variablen Längen, Breiten und Höhen.

pag. 13

- Linea flessibile da coil, per la produzione di sviluppi per pannelli. Operazioni eseguite in automatico, controllate da computer: spianatura, foratura, scantonatura, marcatura.

page 13

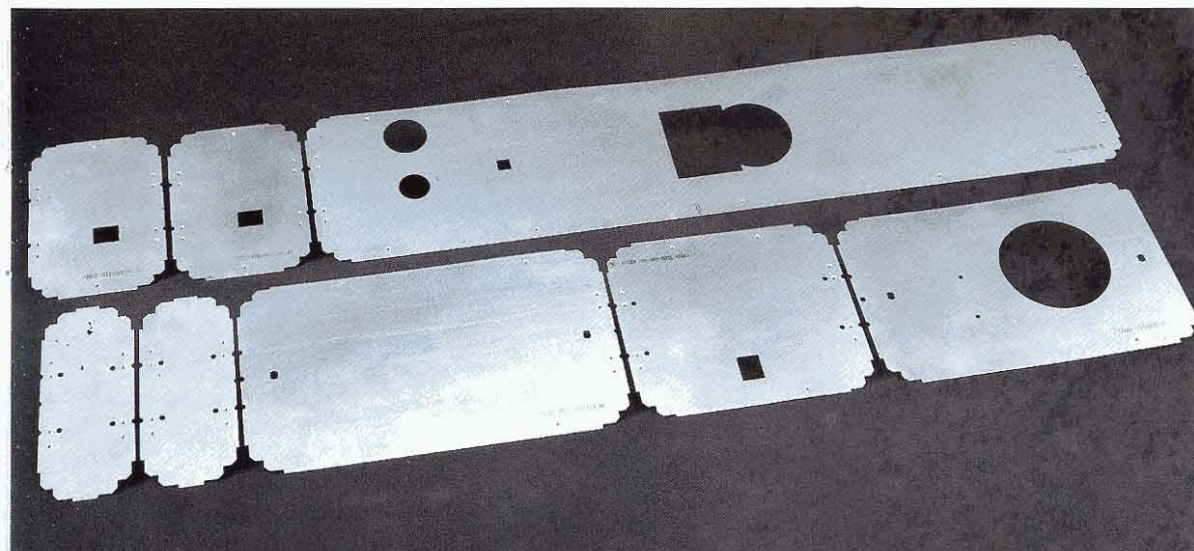
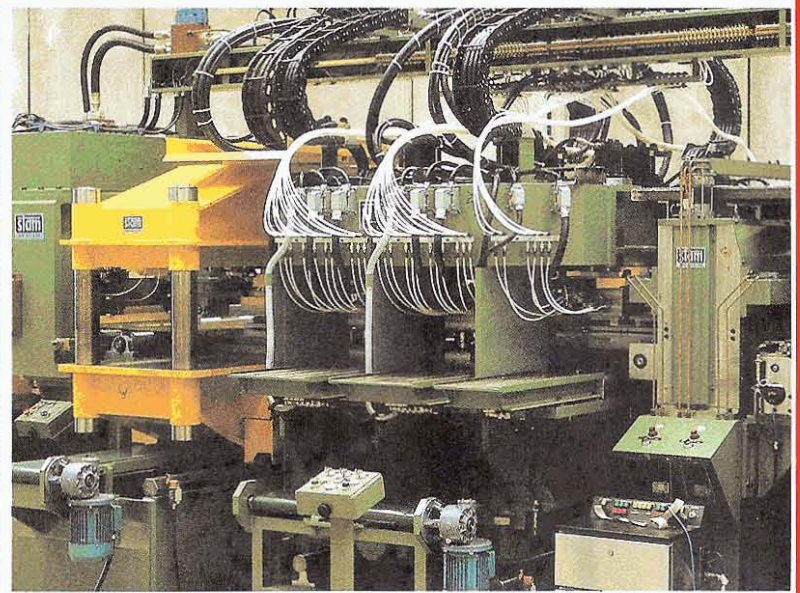
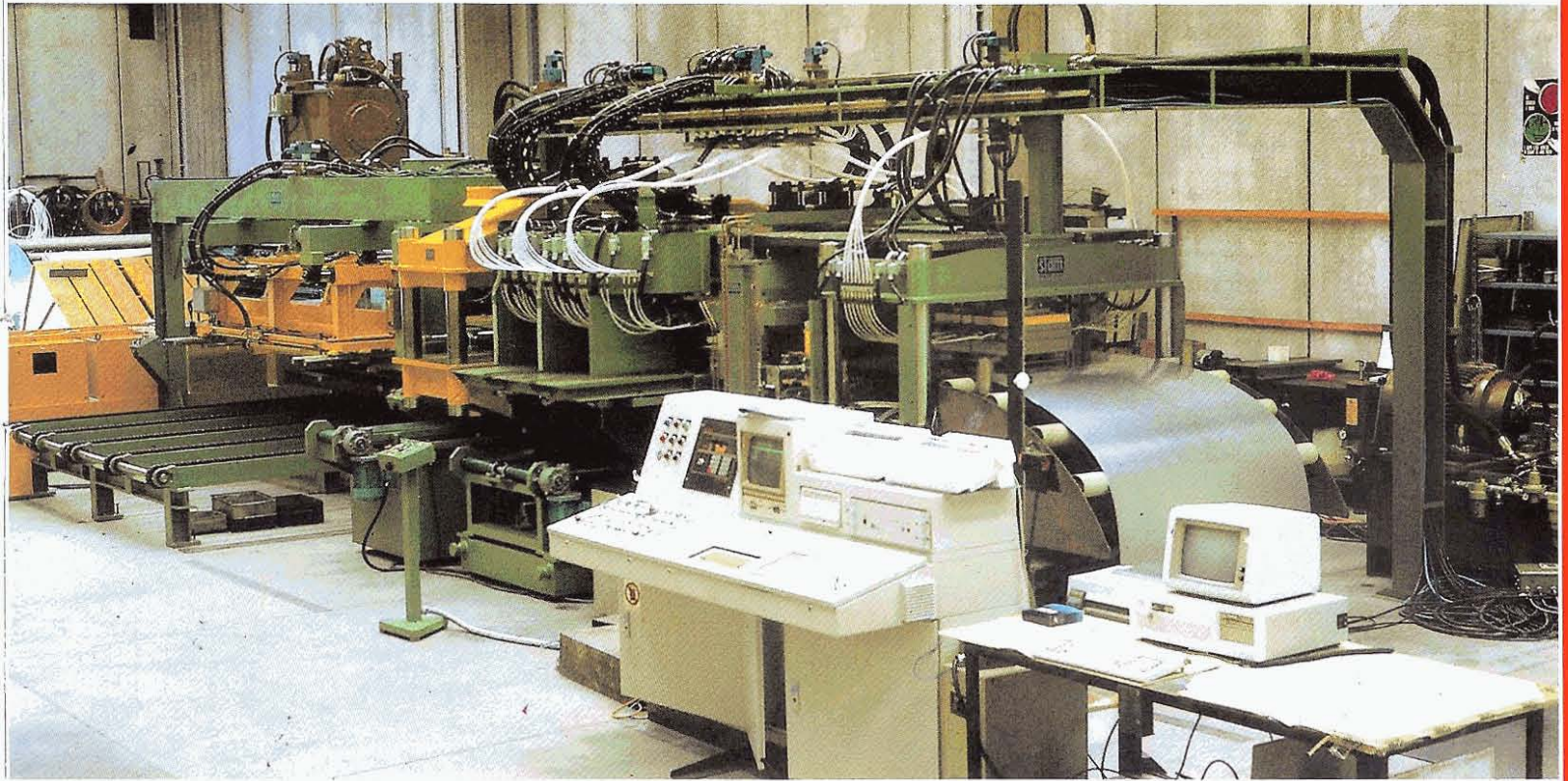
- Flexible equipment starting from coil, for production of blanks for panels. Operations performed automatically, under control of a computer: levelling, piercing, notching, ink-

page 13

- Installation flexible pour la fabrication de flans usinés. Operations exécutées en automatique sous contrôle d'un ordinateur: planage, poinçonnage, encochage,

S. 13

- Flexible Arbeitsstrasse, mit Coil als Ausgangsmaterial zur Herstellung von Platinen für Paneele. Sämtliche Arbeitsgänge werden automatisch, unter Computerkontrolle,



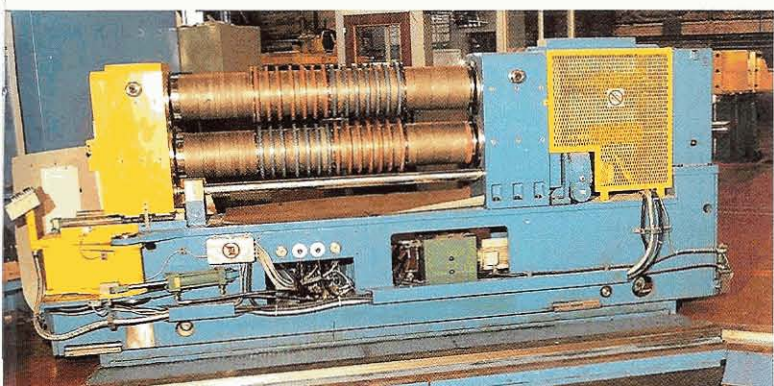
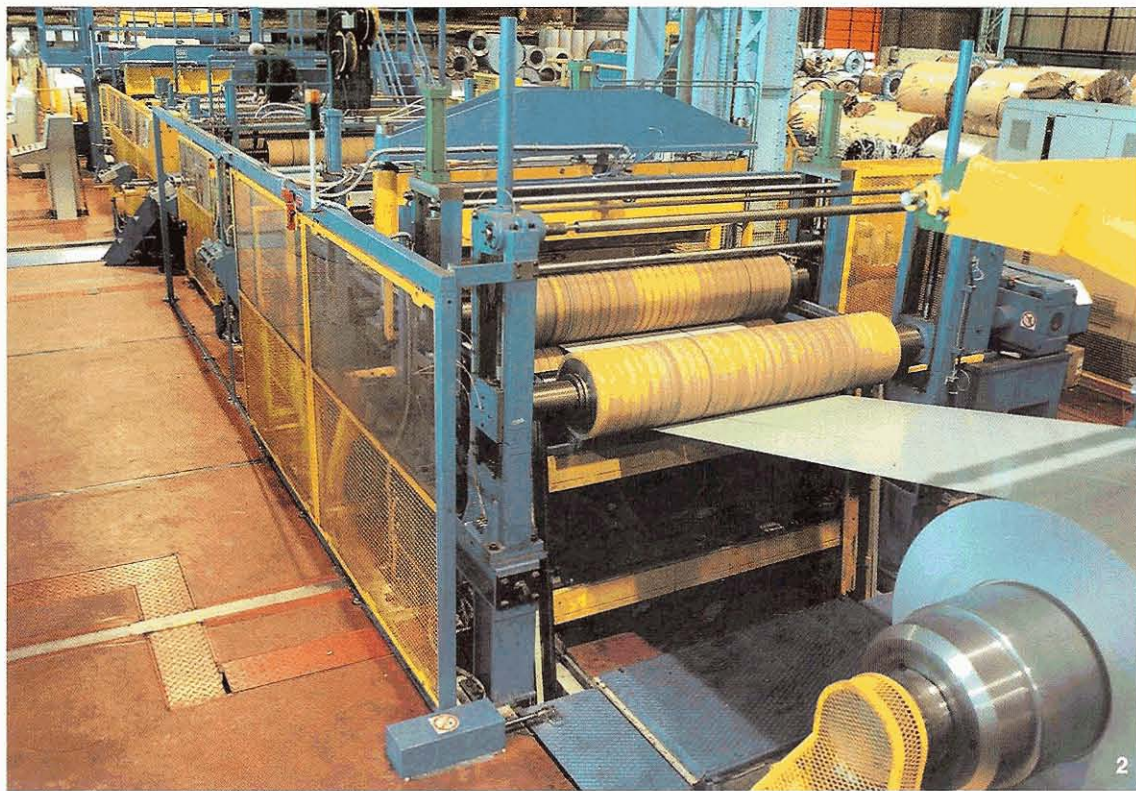


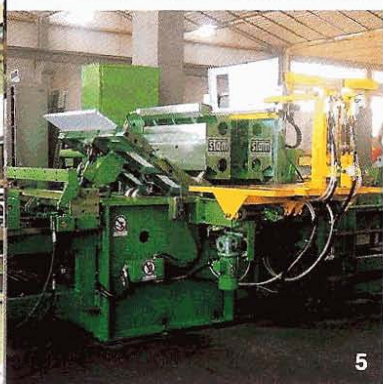
- 1/2 - Linea di taglio in strisce per verniciato
- 3/4 - Linea di taglio in strisce 1500x6 per inox
- 5² - Doppia ansa
- 6 - Cesovia a lame circolari a cambio rapido
- 7 - Avvolgistradi

- 1/2 - Slitting line for prepainted steel
- 3/4 - Slitting line 1500x6 for stainless steel
- 5 - Double loop
- 6 - Shuttle-type slitter
- 7 - Scrap baler

- 1/2 - Ligne de refendage pour prélaqué
- 3/4 - Ligne de refendage 1500x6 pour inox
- 5 - Double boucle
- 6 - Refendeuse à changement rapide
- 7 - Enrouleur de rives

- 1/2 - Längsteilanlage für vorlackiertes Stahl
- 3/4 - Längsteilanlage 1500x6 für rostfreies Stahl
- 5 - Doppelschleife
- 6 - Schnellwechselnde Kreisschere
- 7 - Saumstreifenwickler





- 1/2 - Macchine per cestelli di lavatrice
- 3 - Piegalembi doppia
- 4 - Imbocco automatico del nastro all'avvolgitore
- 5 - Piegatrice tangenziale a 6 pieghe
- 6 - Gruppo di tensionatura nastro ad «S»
- 7 - Gruppo alimentazione per pressa

- 1/2 - Machines for drums of washing machines
- 3 - Double end folding machine
- 4 - Belt wrapper
- 5 - Cabinet folding machine
- 6 - Strip tensioning unit for painting line
- 7 - Coil feeding equipment

- 1/2 - Machine pour la production de tambours de machine à laver
- 3 - Plieuse double
- 4 - Enrouleur à courroie
- 5 - Plieuse à volets (6 plies)
- 6 - Groupe tensionneur
- 7 - Ligne d'amenage de presse

- 1/2 - Maschine zur Herstellung von Waschmaschinentrommeln
- 3 - Doppelte Kantenbiegemaschine
- 4 - Automatische Bandedfädelung in die Aufwickelhaspel
- 5 - Tangentialbiegemaschine (6 BÜge)
- 6 - Bandbremsgruppe
- 7 - Vorschubgruppe für Presse

S.T.A.M. S.p.A.
Capitale Sociale: 5.000.000.000 Lit.
Fondata nel 1963
Area: 30800 mq
Area coperta: 14000 mq
Addetti: 130

S.T.A.M. Ltd.
Registered stock: 5.000.000.000 itl
Established in 1963
Area: 30800 m²
Covered area: 14000 m²
Employees: 130

S.T.A.M. S.A.
Capital de: 5.000.000.000 L.
Fondée: an 1963
Surface: 30800 mq
Surface couverte: 14000 mq
Effectifs: 130

S.T.A.M. AG
Gesellschaftskapital: 5.000.000.000 Lire
Gegründet 1963
Gesamtfläche: qm 30800
Bebaute Fläche: qm 14000
Anzahl der Beschäftigten: 130

