



## INNATE IMMUNITY NK Cells

Part of AbD Serotec  
Innate Immunity Range

### Research Areas

- Apoptosis & Cell Viability
- Complement
- Cytokines & Chemokines
- Pattern Recognition Receptors
- Toll-like Receptors

### Cell Types

- Dendritic Cells
- Macrophages
- **NK Cells & Receptors**

## Application specific antibodies and reagents for immunological research

AbD Serotec offers a comprehensive range of antibodies for NK cell research:

- Antibodies against markers expressed on NK cells such as CD16, CD56, CD161 (KLRB1/NK1.2), CD94 (NKG2), CD158 (KIR) and CD335 (NKp46/NCR1)
- Antibodies to NK cell activating cytokines that are released upon pathogen infection such as IL-2, IL-15, IL-12 and CCL5 (RANTES)
- Antibodies to NK cell activating receptors such as CD335 (NKp46/NCR1), CD94, CD16 and inhibitory receptors such as CD158 (KIR) and CD85j (ILT-2/LIR1)
- Antibodies to molecules secreted by NK cells such as TNF alpha, IFN gamma and alpha defensins

### Featured Product: Four-color human flow kit (4C007)

AbD Serotec four-color human flow kit can be used for single-step identification of T-cells (CD3+), B-cells (CD3-CD19+) and NK cells (CD3-CD16+ and/or CD56+), useful in the study of NK-mediated cytotoxicity against malignant and virally infected cells.

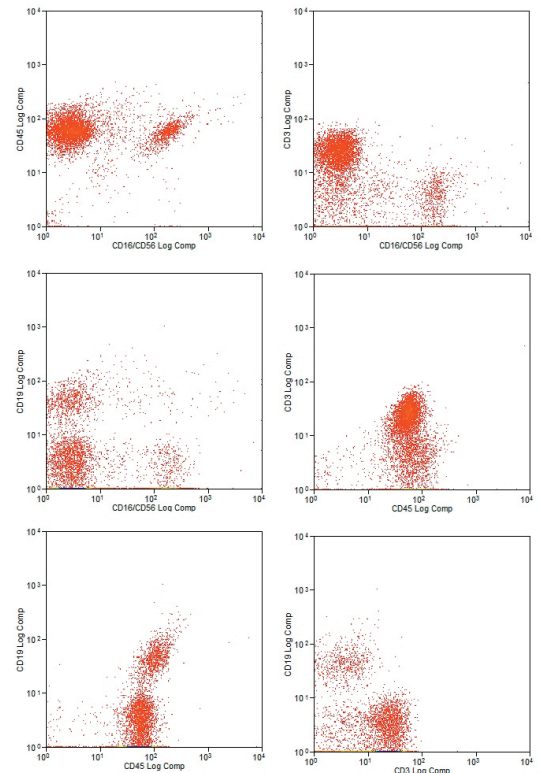
#### Related Products:

Flow Cytometry Absolute Count Standard™ (FCSC580) and Erythrolyse Red Blood Cell Lysing Buffer (10x) (BUF04B)

#### NK cell isolation using four color human flow kit

Human peripheral lymphocytes stained with multi-color human CD3/CD16+CD56/CD45/CD19 flow kit (4C007).

The top right panel shows a potential population of NK cells (CD3-CD16/CD56).



AbD Serotec offers a broad range of products for studying NK cells. A selection of products is shown in the tables below, for a full product listing go to [abdserotec.com/nkcells](http://abdserotec.com/nkcells)

## Anti-Human

Specificity	Clone	Applications	Formats	Product Code**
CD3/CD16/ CD56/CD45/ CD19	UCHT1/ LNK16/ MEM-188/ F10-89-4/ LT19	FC	APC, FITC, PerCP, RPE	4C007
CD2	LT2	FC, FN, IHC-F*, IP	Pur, A647, Biot, FITC, LE, RPE	MCA1194
CD11b	ICRF44	FC, FN, IHC-F*, IP	Pur, A647, A700, Az Fr, Biot, FITC, RPE, RPE-A647	MCA551
CD11c	Polyclonal	IHC-P*	Pur	AHP1226
CD16	KD1	FC, FN*	Pur, FITC	MCA5665
CD16	LNK16	FC, IP	Pur, A647, Biot, FITC, LE	MCA1193
CD16/CD56	LNK16/ MEM-188	FC	FITC	MCA2074
CD27	LT27	FC, IP	Pur, A647, Az Fr, FITC, RPE	MCA755
CD56	123C3	E, FC, IHC-F, IHC-P*	Pur, A488, A647, A700, FITC	MCA2693
CD56	C5.9	FC	RPE	MCA1437
CD56	ERIC-1	E, IHC-F, WB	Pur, Az Fr	MCA591
CD56	MEM-188	FC, IHC-F*, IP, WB	Pur, A647, FITC	MCA2046
CD62L	FMC46	FC, IHC-F, IP	Pur, FITC, RPE	MCA1076
CD66acd	YTH71.3	FC, IHC-F	Pur	MCA1147
CD81	1D6	FC, FN, IF/ICC, IHC-P, IP, WB	Pur, FITC, LE	MCA1847
CD85j	4F9	FC, IHC-F	Pur, A488, A647, FITC, RPE	MCA2515
CD94	DX22	FC, FN	Pur, Az Fr, Biot, FITC, RPE	MCA2254
CD94	HP-3B1	FC, IHC-F*, IP	Pur	MCA1537
CD95	LOB 3/11	FC, IHC-P, IP	Pur, Az Fr	MCA1540
CD95	LOB 3/17	FC, IP	Pur, A647, FITC, RPE	MCA1539
CD95		FN	Rec. Protein	PHP192
CD96	NK92.39	FC	Pur, A488, A647, FITC, RPE	MCA4643
CD158b	190IIC311	FC, WB	Pur, A488, RPE	MCA2340
CD158b	GL183	FC, IP	Pur	MCA1584
CD161 (KLRB1/ NK1.1)	B199.2	FC, IHC-F, IP	Pur, FITC, RPE	MCA1855
CD244	2B4.69	FC, IP	Pur, A488, LE, RPE	MCA2421
CD300a	P192	FC	Pur, FITC, RPE	MCA5747
CD314	1D11	FC, FN, IHC-F, IP	Pur, A488, A647, FITC, LE, RPE	MCA2405
CD335 (Nkp46)	N1d9	FC, WB	Pur	MCA2339
CD335 (Nkp46)	9E2	FC, FN	Pur, A488, FITC, LE, RPE	MCA4646
CD336	3.43	FC	Pur, A488, A647	MCA4665
GRANZYME A	GA6	IHC-P*, WB	Pur	MCA2117
GRANZYME B	GB11	E, FC*, IF/ICC, IHC-F, IP	Pur	MCA2120
GRANZYME B	GB7	IHC-P*, WB	Pur	MCA2118
IFN gamma	B27	E, ES, FC*, IHC-F*, WB	Pur, APC, Az Fr, Biot, FITC, RPE	MCA1554
IFN gamma	D9D10	E, FC*, WB	Pur, FITC, RPE	MCA1581
SIGLEC-7	S7.7	E, FC, FN, IP, WB	Pur, FITC, LE, RPE	MCA5782
SIGLEC-9	K8	FC, IF/ICC, RPE	Pur, FITC	MCA5890
SIGLEC-10	5G6	FC	Pur, FITC, RPE	MCA5783
TNF alpha	Polyclonal	E, FN, IHC-P*, WB	Pur, Biot	AHP1212
TGF beta	TB21	E, FC*, IHC-F, IHC-P*, WB	Pur	MCA797

## Anti-Mouse

Specificity	Clone	Applications	Formats	Product Code**
CD2	AT37	E, FC, IP	Az Fr, FITC, RPE, S/N	MCA1261
CD11b	5C6	FC, IF/ICC, IHC-F, IP	Pur, FITC, LE, RPE	MCA711
CD11b	M1/70.15	FC, FN, IHC-F, IF/ICC, IHC-P*, IP	Pur, A488, A647, A700, Biot, FITC, LE, RPE, RPE-A647, RPE-A750, RPE- CY5	MCA74G
CD11c	N418	FC, IF/ICC, IHC-F, IP	Pur, A488, A647, Biot, FITC, RPE, RPE-A647, RPE- A750	MCA1369
CD27	LG.3A10	FC, IHC-F, IP	Pur, Biot, FITC, RPE	MCA4701
CD45	YW62.3	FC, IF/ICC, IHC-F, IP	Pur, A488, A647, A700, FITC, RPE	MCA1031
CD45R	RA3-6B2	FC, IF/ICC, IHC-F, IP, IHC-P*	Pur, A488, A647, A700, FITC, RPE, RPE-A647, RPE- A750, RPE-CY7	MCA1258
CD49b	DX5	FC	Pur, Biot, FITC	MCA2125
CD62L	MEL-14	FC, IHC-F, IP	Pur, RPE	MCA1259
CD94	18d3	FC	Pur, A488, A647	MCA2288
CD127	SB/199	FC	Pur, A488, A647, FITC	MCA2306
CD161b/c (NK1.1)	PK136	CT, FC, FN, IP	Pur, Az Fr, Biot, RPE	MCA1266
CD335	29A1.4	FC, FN	Pur, Biot, FITC, LE, RPE, RPE-CY7	MCA5938
CLEC-2	17D9	FC, WB	Pur, FITC, RPE	MCA5700
IFN gamma	XMG1.2	E, FC*, FN	Pur, Biot, FITC, LE, RPE	MCA1548
NKG2A/C/E	20d5	FC, FN	Pur, A488, A647, Biot, FITC, LE, RPE	MCA2287

\*Requires special treatment, refer to product datasheet.

\*\*Refer to the website for each format specific product code.

Abbreviations: Axxx= Alexa Fluor®, Az Fr = Azide Free, Biot = Biotin, E = ELISA, ES = ELISpot, FC = Flow Cytometry, FN = Functional Assay, IF/ICC = Immunofluorescence/Immunocytochemistry, IHC-F = Immunohistochemistry - Frozen (Cryostat), IHC-P = Immunohistochemistry - Paraffin, IP = Immunoprecipitation, LE = Low Endotoxin, Pur = Purified, S/N = Supernatant, WB = Western Blotting.