

Honeybourne Village News

May 2017



www.honeybourne.org.uk
50p in the shop

HONEYBOURNE POTTERY

Pottery activities for all ages & abilities

**Weekly Classes, Birthday Parties,
Holiday workshops, Schools & Education
Hen Parties, Youth Groups, Clay Imprints**

Contact Alan & Annabel on 01386 830410
www.honeybournepottery.co.uk
3 High Street, Honeybourne, WR11 7PQ

To advertise in the
Honeybourne Village News
please email
magazine@honeybourne.org.uk



Printing, photocopying
and scanning.

Booklets, leaflets, fliers,
invitations etc.

Black and white and colour.

Contact Claire on 07812 779854
Claire@poore-prints.co.uk

MWS Aerial & Satellite

Tel 01386 833342

- Freeview
- Freesat
- Radio and DAB
- Additional TV Points
- Additional Telephone Points

Free advice and quotations

CAI Member C. 1559
Member of the Worcester Trader
Register

www.mws-aerial-satellite.co.uk

email info@mws-aerial-satellite.co.uk



*Mobile Hair
and Beauty*

***Complete Salon-Style Service in
the comfort of your own home.***

***Fully qualified and experienced
hairdresser and beauty specialist.***

***Only professional products used
Wella L'Oreal Jessica etc.***

***Flexible appointments
and personal attention.***

Sue Williams 01386 832152

(Call anytime, but best time is 6 pm)

Letter from the Editor

Hello!

This month we have a lot of very happy stories about teenagers in Honeybourne. Chloe English is the World Irish Dance Association Under 19 World Champion (pictured on the front cover), Liam Hulbert flew a hot air balloon over the English Channel to break a world record (and I was part of that team too!) and Charlie Rainey and Noah Booker competed in the National Finals of the F1 in Schools competition at Silverstone. You can read about their achievements in the magazine. I think it is wonderful that so many people are involved with so many different activities. It's never too late to try something new - just have a look at sporthoneybourne.org.uk to find out what is going on in and around Honeybourne. There are yoga classes and bike rides and exercise groups, cubs and scouts and beavers, WI, play-reading, a Wednesday Club and a walking group all without leaving the village. Why not take a chance, try something new and see where it leads you!

Thank you to everyone who delivers the magazines, sends me things to put in it and generally helps and gets me organised. If you would like to be involved, please contact me using the methods below.

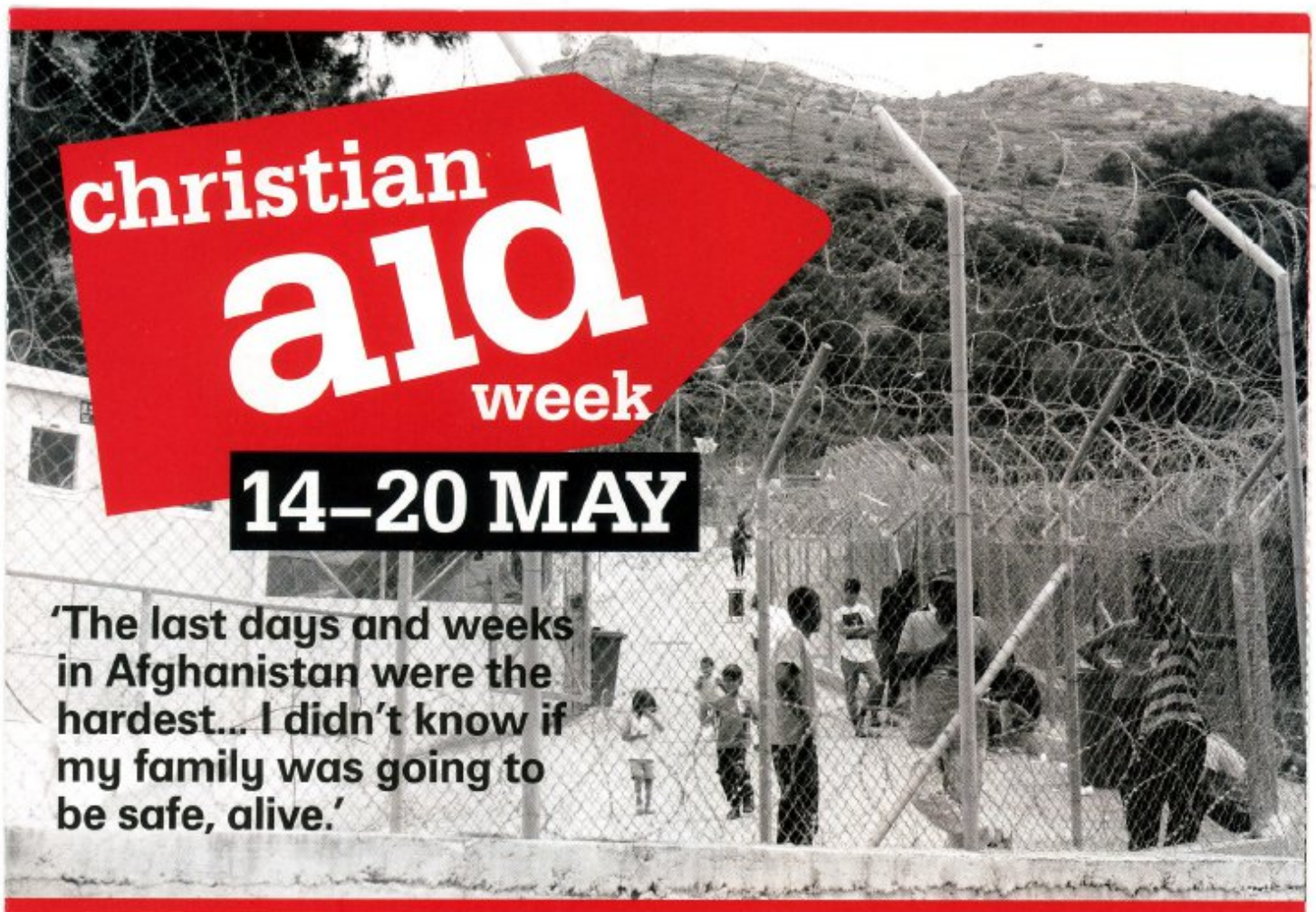
Download a digital copy of the magazine at www.honeybourne.org.uk

Claire Poore, Editor,

magazine@honeybourne.org.uk - 01386 832800 - 47, School Street www.honeybourne.org.uk

The last date for articles for the June magazine is 20th May.

House To House Collection For Christian Aid in Honeybourne



**christian
aid
week**

14-20 MAY

'The last days and weeks in Afghanistan were the hardest... I didn't know if my family was going to be safe, alive.'

Honeybourne Balloonists break Record

On Friday 7th April I was part of the hot air balloon team based in Honeybourne that took part in the world record attempt for largest number of balloons to cross the English Channel in one go. The previous record was 49 and on that Friday we had 82 successfully leave from Dover and land in France.

Pilots came from ten different countries and the attempt was covered on the BBC and picked up by newspapers from around the world.

We started at 4.30 in a field outside Dover, with hundreds of people with head torches unpacking trailers. By 7am the balloons had set off, and I have to say it was one of the most amazing things I've ever seen.



Pilot Alex Daniels and her son Liam flew across the busiest shipping lane in the world, with Liam landing in a field of nonplussed bulls.

The rest of us in the retrieve team packed up the trailer and headed to the port to cross the channel. With sporadic mobile phone coverage, a set of GPS co-ordinates and some very rusty French ("Excusez-moi monsieur, nous recherchons notre

montgolfière!) we arrived at a farm and drove the landrover and balloon trailer over a little bridge, through a cow field and up and down some swampy lumps to find Alex and Liam already packed up and waiting for us!

Back to Calais (via a beer or juice in a little town square), back on the ferry and back to Dover. I think we spent longer on the M25 on Friday evening than we did in France, but it was a wonderful experience. Alex said, "It was a beautiful flight. So quiet. So peaceful. Taking off towards the mist with 81 other balloons for a world record. It felt a real privilege." Liam added, "Thank you to our awesome crew we couldn't have done it without them!!!"

Coincidentally, the record we broke was seven years to the day that the previous one had been set. I'm certainly looking forward to breaking the 100 balloons mark in seven years' time!



Matthew, John, Alex, Kate and Liam in Calais.

Cotswold Foot Clinic

Dedicated to the care of your feet

Est. 2008



A member of
The Alliance of
Private Sector
Practitioners and
registered on their
Accredited Register,
accredited by
the Professional
Standards Authority

Carole Graves DipCFHP MPSPract
Foot Health Practitioner

Treatments include:

Corn removal
Callus reduction
Nail trimming
Foot massage

Diabetic foot care
Verruca treatment
Fungal infection



Tel: 01386 834737

Email: cotswoldfootclinic@btinternet.com

CPB PLASTERING

All aspects of plastering work:

**Boarding, skimming,
rendering, screeding
Call CARL BENFIELD**

Tel 01386 831673 or

07717 201 950

email c-benfield@sky.com

HONEYBOURNE PARISH COUNCIL

Parish Council Tax up by 14.2%

The Parish Council are very aware this 14.2% increase is very considerable compared with all other precepting authorities. The increase was very carefully considered with all the future financial requirement carefully calculated along with the possible precepting constraints in future years.

The current financial commitment for the council is to fund approximately £90,000 for the new pavilion on the Recreation Field: the total cost is expected to be £245,000. The council has an available section 106 reserve fund of £161,000 to support the project but this fund is time limited and some of it must be spent by September. This necessitates getting the project underway as soon as possible. Some of the Section 106 funding came from the Taylor Wimpey development and part of the agreement is that Taylor Wimpey give a parcel of land to the Parish Council to build a Community Centre. This transfer is now imminent and the Village Hall committee are in the process of making a funding application to the Big Lottery to fund the building of the new Community Centre. The Current estimate to build the centre is £800,000 and it is felt the Village Hall committee will only be able to raise £500,000 from the lottery leaving a possible shortfall of £300,000. The Parish Council is able to borrow this extra funding if necessary and it would be repayable from the precept over 50 years if absolutely necessary. With this in mind, and the government continually reviewing their intention to cap parish precepts in line with all other authorities to just 2% the council considered it prudent to make a sizable increase while they can, as in future a capped increase of 2% would fix the annual precept increase to less than £1,500 on the current precept amount.

A VACANCY EXISTS FOR A PARISH COUNCILLOR TO BE FILLED BY CO-OPTION

The Parish Council will consider filling the vacancy for a Councillor by co-option at a Council meeting following the receipt of validated applications. Anyone interested in serving the community and wants to become a candidate for co-option should obtain an application form for candidacy from The Clerk or phone Cllr David Cowan (Chairman) on 01386 831801

New Vodaphone Mast Coming Shortly

A planning application to install an 18m tall Lattice Mast including 3no. Antennas, 2no. Dishes and Associated Cabinets at Brook Farm, Weston Road, Honeybourne was considered by the council who have no objection to the application and welcomed the long-awaited phone signal improvements. Traffic Speed Enforcement Request. In consideration of traffic speed reports from the council VAS and concerns made by parishioners, the council will be requesting extensive speed enforcement from the police and the Safer Roads Partnership to have the enforcement camera van in the village as soon as possible.

The Parish Council meets on the 2nd Tuesday of each month. Members of the public are welcome to attend meetings, which are held in the Village Hall and commence at 7.15 pm. Residents are welcome to speak on any issue of local concern during the Open Forum before the start of the meeting.

Clerk John Stedman

*1, Ban Brook Road, Salford Priors, Evesham, Worcs, WR11 8XE Tel 01789 773999:
E-mail: j-stedman@btconnect.com*

The Parish Office is open generally all day 10.00 am to 6.00 pm including weekends for all parish enquiries.

Email is my preferred communication but my telephone is manned almost all day. The answer phone is on, but please ensure you state your business is with Honeybourne as my phone serves other Councils and my own business.

For up to Date Council information Visit www.worcestershire.gov.uk/MyParish and then link to Honeybourne



Team Zoom: Chris Bridges, Noah Booker and Charlie Rainey

Team Zoom at the National F1 in Schools Final

Honeybourne boys, Charlie Rainey and Noah Booker (along with friend Chris Bridges) took part in the 'F1 in Schools' National Final at Silverstone on 29th - 30th March. The boys, known as Team Zoom, were up against some very stiff competition, racing against 30 other school teams in the Professional Class from all over the UK. Their car performed extremely well, achieving the 6th fastest track time, and 4th fastest average track time.

After two days of judging, presentations and racing, the team were placed 14th overall in the competition and were delighted to come away with the Judges Recommendation Award. The judges said of the team: "Team Zoom had multiple challenges, as the team members are split between two schools a fair distance apart and they use their own time and resources for the challenge, learning on their own and using their own initiative to meet all the judging requirements, well done guys."

To see photos of the team's progress at the final, see their website www.teamzoom.uk The team are very grateful to all who sponsored them.



12.30 - 1.30 PM

Living Longer and Stronger

Evidence based training progressive strength training and exercise specifically designed for the over 50's. All fitness levels welcome.

1.30 - 2.30 PM

Happy Fit Mums - Pilates, fitness work out with strength and conditioning.

Option to bring babies / toddlers along or simply just work out on your own. All fitness levels welcome.



**FEEL GOOD
MONDAY**

GROUP FITNESS CLASSES

Honeybourne Village Hall

CONTACT CLAIRE

(Qualified Exercise Physiologist)

07554 192 487

Mildred at 94



Once a week Mildred goes to her Exercise class which enables her to run around her great grandchildren, do her gardening and enjoy life to its full extent. Mildred never misses her weekly class which works on balance, mobility and core strength. There are over 40 people in the group ranging from 55 to 95.

Come along and have the confidence and quality of life Mildred has.

CLEANING SERVICES



We are a family run business and can help with all house hold duties;

Domestic cleaning- Including ironing services

One off Cleaning

House-keeping

End of tenancy cleaning

Office cleaning



Call Claire for a personalised quote

07554 192 487

Hourly rate starting at £11 an hour

Chloe is World Champion!

The World Irish Dance Association world and international championships were held in Killarney Ireland over the weekend 21st -23rd April where four Honeybourne girls took part.

They all dance for the McCarthy-Felton School of Irish Dancing in Bidford-upon-Avon where classes are held along with Salford Priors, and taught by Mary Felton and Meabh Linnane.



Chloe English has returned from Killarney this week as WIDA U19 World champion. She has danced for the McCarthy Felton School of Irish dancing for ten years, competing in solo and team events.

She is also part of the World figure dancing championship team from McCarthy Felton, who won in Killarney for the fourth time in five years. This team included Stephanie, Leah and Katrina Perkins, all from Honeybourne. These three girls also had amazing results in their solo championships, Stephanie coming 6th in U21, Leah 7th in U19 and Katrina 6th in U15.

Chloe said "I feel like I'm dreaming and still cannot process the fact I finally won the title that I've been waiting to win for so long. I'm overwhelmed to say the least."

Tomlins

Funeral Directors

- 24 Hour Service
- Pre-payment Plans - Fully Guaranteed
- Private Chapels of Rest
- Monumental Masonry
- Modern Jaguar fleet

60 Years of combined staff service to the community

36-37 The Leys, Bengeworth, Evesham

Tel: 01386 765 133

www.tomlinsoftheleys.co.uk



DAVID BAKER

FUNERAL DIRECTORS

- 24 hr Caring Service
- Monumental Stone-masons
- Fully Guaranteed Pre Payment Plans

98 High Street, Bidford-on-Avon

01789 773482

Your Local Funeral Director
Serving the community for over 20 years

www.mylocalfuneraldirector.co.uk



BED & BREAKFAST AT POTTER'S COTTAGE, HONEYBOURNE

~ Double en-suite room £68 per night

~ Twin en-suite room £58 per night

~ Entire cottage £110 per night

Contact Alan & Annabel on 01386 830410
honeybournepottery.co.uk/bed-and-breakfast
3 High Street, Honeybourne, WR11 7PQ

Would you like to cycle but you don't own a bike?

Would you like to cycle but lack confidence?

Would you like to ride on the back of a tandem?

Then H-BUG (Honeybourne Bicycle Users Group) is able to help you.

H-BUG has access to a number of bikes that can be borrowed
for H-BUG cycle rides.

There are no costs, and membership of H-BUG is entirely free.

**Bikes can be booked in advance by texting
request to 07971 989 430**

RWH Accountancy Limited

Personal Tax Returns.....*From £ 95*

Sole Trade Accounts.....*From £ 295*

Company Accounts.....*From £ 495*

Other Services: Company Formations, VAT Returns, Bookkeeping, Payroll

Contact Richard: 07823 889711 – richard@rwhaccountancy.co.uk

Corrine's Cleaning Service

- Office cleaning
- General cleaning & tidying
- Laundry & ironing
- light housework
- CRB Checked
- Competitive rates

Call: 07731 866 445 or

Email: corrine.page2@googlemail.com



John Betts
Property maintenance
General repairs
Brickwork / stonework
Patios / repointing
Painting / roofing
Fences / storm damage
25 years' experience
No job to small
For a free quote
Phone Offenham
01386761379
mob 07415144926

Thenailandbeautyroom

Salon professionalism without salon prices



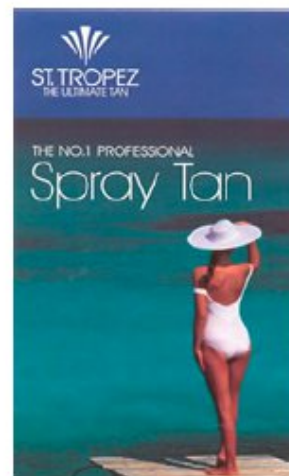
Rose English MGBT

Nail Technician, Professional spray tanning & Beauty therapist



Treatments

ST TROPEZ spray tan
Calgel nails
Clarins facials
Manicures & pedicures
Reflexology
Aromatherapy
Waxing



01386 833842 or 07900876406

Evening appointments available

BRETFORTON GARDEN CLUB

Secretary Barbara Jenman opened the meeting by welcoming everyone and again appealing for a Chairperson. Talking about the open gardens on June 4th she asked for tombola prizes and also for volunteers for various jobs on the day. Alison spoke of the trip to Barnsdale on July 8th; she would like names and monies in by the May meeting please. It promises to be a great day out.

Julian Tolkien was the speaker this month. He gave an informative and amusing talk on his passion for pelargoniums. He began by growing fuchsias before turning his interest to pelargoniums thirty years ago. Julian introduced us to unusual plants some with scented leaves of spices, lemon and many others, he showed us how to prune divide and propagate and a short insight into showing too. His passion for pelargoniums was infectious and many members left with plants of their own.

Bretforton Garden Club provides gardening knowledge in a friendly way through speakers and interesting garden visits. We meet the first Thursday of every month at Bretforton Memorial Hall 7.30pm and it only costs £5 year. Lifts can be arranged from from a number of villages, come and join us you will be walmly welcomed.

Phone Barbara Jenman 01789 720514 or visit the website www.bretfortongardenclub.co.uk



HONEYBEES W.I.

On Wednesday 19th April at 7:30 members of the Honeybees W.I met to enjoy a fun evening of learning new craft skills. Many members shared their knowledge and craft skills helping other members to make beautiful needle cases, Dorset Buttons and crocheted items.

The evening was thoroughly enjoyed by all and afterwards a prize was given for the winner of the Competition: the best Easter Bonnet.

The next meeting, which will be the Annual Meeting And Resolutions will be held on Monday May 15th at 7:30 at Honeybourne Village Hall. Members will be discussing the yearly Resolutions so this could be an interesting meeting to come along to and find out more about what impact the Women's Institute has on some current issues.

Just to lighten the evening a little the competition will be 'Bring your Silliest Hat'.

Please feel free to visit us, you will be made to feel welcome and someone will always be happy to answer any questions.

Mobile Library Time Table: Library visits on the 4th Friday of the month.

Grove Avenue:	12.05 - 12.20	Lower Westbourne:	12.25 - 12.40
Perrie Drive:	12.45 - 1.00	Weston Road:	1.05 - 1.15
LUNCH		Village Hall:	1.45 - 2.00

Ironing and Laundry Service

Reliable, top quality service

£12 per hour

Collected and delivered

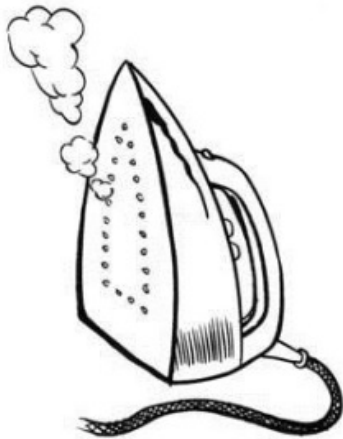
References available

Phone

BEVERLEY

01386 831824

07779 103071



K925 Pet Services

- Dog walking
- Pet visits
- House sitting
- Fully Insured
- Disclosure checked
- References available

Covering Bretforton,
Honeybourne and
surrounding areas

Call Jo: 07912 160131

jo@K925petservices.co.uk
www.K925petservices.co.uk



facebook
Find us on Facebook



Evesham Funeral Service

Independent Family Funeral Directors

01386 389585

Craig is available 24 hours a day.
Please call for any assistance.



Golden Charter
Funeral Plans



EveshamFuneralService.co.uk

"Thank you for providing such a good service."

*Hannah Jones,
Customer's Daughter,
Bluebird Care
Worcester & Wychavon*



Bluebird Care Care in your home

We provide flexible and bespoke homecare and support services from 30 minute visits to 24 hour live in care.

Call us or email us today on worcesterandwychavon@bluebirdcare.co.uk.

Call today to
find out more

01386 764 830

bluebirdcare.co.uk/worcester-wychavon



www.indulgenceskincare.co.uk



Indulgence Skin Care & Beauty
Honeybourne

**25% off your 1st
appointment**

Call fallon on 07814048166

J
JESSICA

Sienna
PROFESSIONAL SMOKEY TAIL

dermalogica[®]

a skin care system researched and developed by The International Dermal Institute

Letter from the Curate

Dear Friends,

With the early spring sunshine we have enjoyed in April and everything bursting into bloom, we are looking forwards to a new era in our six parishes. Our new team vicar, Scott Watts will be installed at St Peter's, Willersey on 28th June while I will be leaving the parishes on 18th June.

These two dates are close together through the purely happy coincidence that Scott's appointment coincided with the end of my term as a curate. That means that there will be no 'gap' between my departure and Scott's arrival. I will be taking up a new post in July, and will be able to tell you more in my final pastoral letter next month. Scott has written an introductory article for you all this month (below). He and his wife Ros, together with Marigold the basset hound will be moving into the Vicarage in Honeybourne in June.

I am sure you will give them a warm welcome as you did me when I came to the VACE team ministry nearly three years ago now. How time flies!

With love and blessings,

Celia.

Assistant Curate. Vale and Cotswold Edge Team Ministry.

Our contact details are:

Revd. Craig Bishop (Team Rector): admin@stjameschurchcampden.co.uk Tel. 01386 841927

Revd. Celia Woodruff: celia.woodruff1@gmail.com Tel. 07807 899119

Revd. Dana Delap (Vicar of Blockley & Bourton on the Hill) dana@delap.org.uk Tel. 01386 700676

Hello!

I'm grateful to have the opportunity to introduce myself, although I want to do that properly when Ros and I, along with our Basset Hound, Marigold, move into Honeybourne Vicarage and I become your Vicar and part of the Vale and Cotswold Edge Team Ministry. I'm excited and humbled to have been appointed and really look forward to being part of the community and of your lives. One of my passions as a priest is to do my utmost to be there for everyone, regardless of your age, gender or anything else – even regardless of whether or not you come to Church, although I hope you will!

I was born and grew up in Suffolk. After Ros and I married in 1991 we lived in Cambridge and then, in 1996, moved to Brampton in Cambridgeshire where we have lived ever since. While the move to the parishes is a big one for us, and we will leave behind much that is familiar and many friends, we're looking forward to making new friends and to living in a part of the country that we know and love. Apart from

working for Lloyds Bank for five years, during which time I met Ros, most of my pre-ordination working life was as a civil servant in the Ministry of Defence, where I worked alongside the Royal Air Force and US Air Force in human resources and in a parliamentary and ministerial business secretariat. Apart from two years in Lloyds Bank, Ros's career was in secondary education. She taught history and ended her career as an assistant head teacher and director of sixth form. These days, as well as working as a part-time receptionist at a local veterinary hospital, she designs, makes and sells jewellery and has recently qualified as a milliner, having trained in Chipping Campden with Louise Pocock.

I was ordained in Ely Cathedral in 2003 and served as curate in Brampton. In 2007, I became chaplain of Sue Ryder St John's Hospice and in 2009, I was appointed as Lead Chaplain of Hinchingsbrooke Hospital in Huntingdon. I've played a full part in the life of the hospital, supporting patients, relatives, visitors, volunteers and 1,650 amazing staff, through some of the hardest things that life can ever throw at us. That's all been a privilege beyond words and now the sense of privilege continues as we follow God's call to come to you.

Ros and I are looking forward to meeting you all and a great opportunity for us to do that is on 28 June at 7pm in St Peter's Church, Willersey, when Bishop Rachel, the Bishop of Gloucester, will Licence me as your new Vicar. Please come along and share in this very special and joyous occasion, when, together, we begin the next phase of our journey with the God who loves each one of us more than we can even begin to imagine.

With our love, Scott & Ros (and Marigold!)

Honeybourne Wednesday Club

The monthly meeting of the Wednesday Club Honeybourne took place on the 5th April.

There were 31 members present, one of these was Ann Banbury a new member who was welcomed to the club by Anne Innes.

Birthday cards were distributed to Mrs Hiden Wood, Mrs Jennings and V Taylor.

Minutes of the January meeting and comments about the dinner in Feb were read by the secretary.

Members on the cake rota for May are: Marlene Emms; Peggy Miller and Ann Abel.

The next trip out is a half-day day to Worcester on April 12th 10.00 till 2.00. Anne took names and the coach fare from members wanting to go.

Entertainment this afternoon was Ruby Lamont singing hits from the 40s, 50s and 60s which were enjoyed so much that besides singing along, some of the ladies even enjoyed a dance!

The raffle then took place and was it beginners luck that Ann the new member won about 3-4 times.

The May meeting will take place on the 3rd when we shall be entertained by Nicholas Clarke with one of his numerous slide shows.

This is a very friendly social club and anyone over 60 most welcome to join.

Weddings • Occasions • Corporate Lunches

Fiesta Cakes & Caterers

~ OF WICKHAMFORD ~



AWARD WINNING

PARTY CATERING

- Special Event Catering
- Hot & Cold Buffets by Award Winning Chef
- Event Co-ordinator & Waiting Staff
- Decorative Balloons & Marquees Available
- Outside Bar & Pig Roasts
- Photo Image Cakes
- Food Hygiene Rating 4 Star
- All Produce Locally Sourced
- Open 7 Days a week • Free Quotations

OAP GROUP
LUNCHES
FISH & CHIP
CLUB
SUNDAY
LUNCH CLUB

FOR A HELPFUL, EFFICIENT AND COST EFFECTIVE SERVICE

tel: **01386 834183**

email: fiestacaterers@btconnect.com

~ TO VIEW OUR GALLERY VISIT ~

www.fiestacatererswickhamford.co.uk

Church Services - May 2017

	Pebworth	Dorsington	Honeybourne	Willersey	Weston sub Edge	Aston sub Edge
7th May Easter 4	11.00 am Eucharist		9.00 am BCP Holy Communion	9.30 am BCP Holy Communion	11.00 am Eucharist	6.30 pm Evensong
14th May Easter 5	10.00 am Family Praise	11.00 am Eucharist	6.00 pm Evensong	9.30 am Eucharist		6.30 pm Evensong
21st May Easter 6	9.00 am Eucharist		11.00 am Eucharist	11.00 am Family Service	9.30 am Eucharist	6.30 pm BCP Holy Communion
25th May Ascension Day	7.30 pm Benefice Eucharist at Weston sub Edge					
28th May Easter 7	6.00 pm Evensong	11.00 am Eucharist	6.00 pm Evensong	9.30 am Eucharist		6.30 pm Evensong
4th June Pentecost/ Whit Sunday	11.00 am Eucharist		9.00 am BCP Holy Communion	9.30 am BCP Holy Communion	11.00 am Eucharist	6.30 pm Evensong

SADLER AUSTIN

May 25th 2016

We miss you so much. Loved and remembered every day

Barb, Nigel, Desmond, Rodney, Sue, Mandy, and all the grandchildren

LOST: Triumph brown leather & waxed cotton motorbike saddle bag.

I was riding through Pebworth-Honeybourne-Littletons-Bretforton-Blackminster areas on my motorbike on 6th April when unfortunately one of my saddle bags fell off the bike. It was only upon arriving home that I noticed this, I re-traced my route in the car immediately after but to no avail. Any information, please contact magazine@honeybourne.org.uk or Claire on 01386 832800

A 5.9-mile circular walk through the Sub-Edges with flat terrain

Sturdy shoes or boots are recommended.

This route is clearly signed (signposts and waymarkers)

Pets should be kept on leads at all times.

This walk starts at The Gate Inn; cross the Weston Road (TAKE GREAT CARE); walk up High Street; then take the footpath alongside the Thatched Tavern into China Corner and walk straight-on until you pass through the narrow gap between the houses. This leads to the end of a cul-de-sac. Turn right and follow the hedge until you come to a steel gate (adjacent to the site of the Honeybourne murder in 1809). The path to the old chicken sheds at Weston Road may be obstructed. If so, continue on to the bridge and then turn left along the headland to the Weston Road.

TAKE GREAT CARE when crossing this road. This is a very fast road, and visibility is not very good. Follow the grass verge to your right where, after 130 metres, you will join a footpath towards Weston Fields Farm. After 50 metres fork right to the stile by the telegraph pole. Follow the path with the brook on your right, crossing two more stiles before coming to a gate that leads into the garden of Long Stretch Farm. Through this beautiful woodland garden, before crossing over the bridge to follow the path with the brook now on your left side. Over another stile, continuing to follow the brook until you meet a stile leading onto the dismantled railway. Straight over the railway and through the gate into Gloucestershire.

Continue straight-ahead to the next gate where you will turn right; through the field gate, then immediately left to walk alongside the fence surrounding the new woodland planting. Over a stile just past the dilapidated sheds; follow the field edge with the stream on your left. Over another stile and ahead again until you reach the bridge on your left. Cross over the stream and then straight-across the young tree plantation until you reach the next stile. With your back to the stile take a 2.30 o'clock direction to the next stile. Over the stile and follow the track to your right until you meet the main road in Weston-sub-edge.

TAKE GREAT CARE to cross this road and continue ahead along Church Street until you reach Parsons Lane on your right, taking time as you pass under the large cedar tree to turn back to look at the barn with two white doors, noticing the fire-plate at the apex of the roof (erected by an insurance company - "Which Mark is to be number'd with the Number of the Subscribers Policy, and there to remain so long as the Subscribers continue to pay their Quarteridges") above a stone dated 1857. Here you will follow the footpath sign alongside this house until the path meets a junction in the road. Take the right fork to follow the field hedge – on your right-hand side – to the end of the road.

Over the stile and straight-ahead, with the hedge on your right, into the corner of the field where you turn left (noting the WW11 air raid shelters for WRAF serving at Honeybourne airfield) and walk 30 metres to the stile into the next field. Straight-ahead across the field to the next stile. Over this stile and straight-ahead again following the hedgerow. Over a bridge and into the next field. With your back to the bridge, walk in an eleven o'clock direction towards the red-brick house; over the stile and then on to the road.

TAKE GREAT CARE as you cross this road and pass through the gates opposite into a private garden. Walk ahead through the garden and into the orchard. Keep walking straight ahead to a stile in the right-hand corner; then follow the brook on the right; over the next stile; through a gate; then over another stile on the right that leads into another private garden. Turn immediately

left to follow the path to the road where you will turn left again and walk to the main road. TAKE GREAT CARE as you cross this road to enter the next field through the field gate (signposted).

Follow the edge of the field for 850 metres, with the hedge on your right, until you reach a bridge over a brook on your right-hand side. Over the bridge and immediately turn left to follow the hedgerow on your left side. Over the stile and walk towards the high ground where you will see the medieval ponds to your right. Walking past these ponds, head towards the far right corner of the field and through the kissing gate. With the hedgerow on your right, continue ahead, over a stile, until you reach a gated bridge. You are now leaving Gloucestershire. Cross the Far Poden driveway and head towards the far left corner of this field; over the stile; cross the bridge on your left and immediately turn right. Over the stile, and straight ahead towards the stables. This field was once a medieval pond. Pass by the stables to the bridge in the far right corner of the field. To your left is the ancient site of a medieval overshot mill.

Turn left to join the Poden Farm driveway and over the stile; then walk straight-ahead until you reach the disused railway. Straight over the railway to the gated bridge; across the bridge and into the next field where, with the bridge behind you, head in a two o'clock direction across the field to the next bridge. Over the bridge; through a rough patch and into the next field. Continue ahead with the hedgerow on your left until you reach another bridge; straight-on to the next stile; straight on into the left-hand corner of this field where you turn right to follow the headland until

you reach a stile near the farmhouse. Over this stile and walk straight-ahead through the woodland area until you reach the stile that leads onto the Weston Road. TAKE GREAT CARE when crossing this road. This is a very fast road, and visibility is not very good.

Follow the path through this housing development until you reach the steps down between the old houses in China Corner. Straight-ahead to the Thatched Tavern; turn right down the High Street to arrive back at the Gate Inn.

We hope you have enjoyed your walk today, and that we have whetted your appetite for a variety of future walks in and around the Parish of Honeybourne. Email steve@stephenbullen.com for copies of any walks, to express concerns, or seek advice on how to best enjoy Honeybourne's Rights of Way.

Hatha Yoga with Nikki

- * Qualified and Experienced Teacher
- * Group and Private Classes
- * Beginners Welcome

Honeybourne Village Hall - Starting 3rd May 2017
Wednesdays 10:30 - 12:00
Saturdays 10:30 - 12:00

Stretch * Tone * Strengthen * Relax



Call Nikki: 07484743460
Email: nikki_cook@hotmail.com
Facebook: Hatha Yoga With Nikki

Honeybourne Walkers Soup Lunch



Saturday 13th May

12 .30 – 2.30 pm

Honeybourne Village Hall

**Enjoy a variety of delicious home-made soups,
served with freshly baked home-made bread**

£5 to eat as much as you like



**All proceeds to
Christian Aid**

Honeybourne scouting group.

1st Honeybourne scouting group would like to thank all villagers that kindly donated tombola gifts for our annual event at the Evesham truck fest.

Thanks to the superb quality of gifts we received we raised a staggering £493.32!!! This is much needed funds to help replace our worn out camping equipment which will benefit the youngsters of Honeybourne. Your support is greatly appreciated we couldn't do it without you .

MH Carpentry



Time served craftsman &
qualified teacher of carpentry;
specialising in:

- Decking
- Doors
- Windows
- Flooring- wood / laminate
- Locks
- Fencing
- Roofing
- CCTV installation
- Any projects to do with wood
- Snagger for new builds

No job too small, Competitive prices
Free estimate in local area

Call Matt 07803 608813 / 01386 642885
email matt-henson@hotmail.co.uk

Jo Martin Youth Dance

*A recreational dance class for boys and girls
age 5-16, welcoming all abilities.*

Offering street, jazz and contemporary dance.

Tuesday

JMYD Juniors 5-10 years old 6-6.45pm

JMYD Seniors 11-16 years old 7-8pm

£3 a class, per person

Offenham Village Hall

For more information contact:

Jo Martin

07581328329

jomartin89@hotmail.com



Professional
Member of
**People
Dancing**
the foundation for
community dance

Merstow Green

FUNERAL HOME, EVESHAM

For over 25 years Philip Tomlins and his family have provided individual care to the residents of the Vale of Evesham.

Based in Merstow Green, at the heart of Evesham, we can help you plan ahead and provide a comforting guiding hand when it matters most.

Telephone:

01386 49903

24 hours



Philip Tomlins DipFD

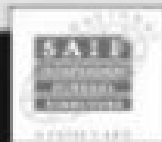
Call **Philip** direct for support, care and reassurance in your time of need

Plan Ahead, pre-paid and bespoke arrangements

Spread the costs and concern of your personal requirements with our pre-paid funeral planning service for yourself or a relative.

Green Funerals and Woodland Burials

From environmentally friendly caskets to full woodland burials, Merstow Green are able to advise on all service types.



www.MerstowGreen.co.uk





Mike Baker



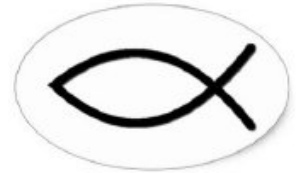
Quality property maintenance
from small works to

General building and roofing - tile, slate, felt, rubber roof.
Extensions, refurbishments, brickwork, re-pointing,
windows fitted, doors hung, carpentry, patios and
landscapes, barn conversions.

A complete building service

Freephone: 0800-0937-313

Mobile: 0794-0837-546



H-BUG

Honeybourne Bicycle Users Group

Every Honeybourne child now has the opportunity to cycle.

The village (H-BUG) has bikes for 6-10 year olds to borrow and also bikes that parents can borrow - all completely free of charge.

There is a short family cycle ride every month on the last Saturday of the month at 2.00pm from the village hall.

Bikes can be booked in advance by texting request to
07971 989 430

Interested in hiring the Village Hall?

Go to our website www.honeybournevillagehall.org
and click on bookings, or ring Rita on 01386 640696
about regular bookings and Sylvia on 01386 832215
about one-off events

A J HICKMAN ELECTRICAL

E: ajhickmanelectrical@aol.com

As a business our aim is to provide a **high quality** service so our customers receive **top quality** install and satisfaction on the whole service at a very **competitive price.**

- New Build Installs
- Rewires
- Fuseboard Upgrades
- Additional Power Points / Lights
- External Lighting
- Any Aspects of Electrical Work
- Additional BT Points
- Additional TV Points

Electrical Safety Register

incorporating
ELECSA + ECA
Certification Ltd



TEL: 01386 831258

MOB: 07976 052828

The logo for Hairs & Graces Unisex Hair Salon is displayed on a dark background. At the top, there is a decorative flourish. Below it, the words "HAIRS" and "GRACES" are written in a large, serif font, separated by a stylized ampersand. Underneath, "UNISEX HAIR SALON" is written in a smaller, sans-serif font, flanked by two pairs of scissors. Another decorative flourish is at the bottom. At the very bottom, the phone numbers "01386 257170" and "07429 287037" are listed, along with the email address "contact@hairs-graces.co.uk".

Visit us at:

Unit 28

Two Shires Park

Honeybounne

WR117QF

Open Tuesday –
Saturday

You can also find us
on Facebook

News from your District Councillor & County Councillor Alastair Adams

The Annual Parish Council meeting occurred recently and it is a great opportunity to look back over the last 12 months and see the improvements and changes to Honeybourne. These include:

Superfast Broadband – the 2nd new BT cabinet (Badsey 3) was installed in Honeybourne - The original Superfast broadband cabinet only had enough ports for connections to 288 houses, and this was full by October 2015. BT installed a 2nd cabinet in May outside the village hall so up to 576 houses can be connected. Some other good Broadband news - the new Badsey Cabinet 11 has gone live. This means businesses in Honeybourne Airfield Business Park are able to order Superfast Broadband too. The cabinet in Station Road opposite Dudley Road is has been re-engineered and is called Badsey 17. This means now nearly every house in Honeybourne can upgrade to Superfast Broadband if they want.

Highway issues:

1. Traffic calming measures at the entrance to the village from the south, Weston Road - The solar controlled "Slow Dow" sign was installed.
2. The overhanging trees and shrubs were removed from the grass verge so the entrance village signs and the 30mph signs can clearly be seen.
3. Weight limit on the Mickleton Rd to stop HGV's using this as a rat run has been agreed.
4. The ruts at the edges to Bretforton Road were filled with stone, and the verges were built up with earth.
5. Extension to 30mph speed limit in Bretforton Rd has occurred and new "Beware Children" signs erected to help with the activity around the recreational field.
6. New Offenham Rd/Elm Road roundabout was completed in January 2017 greatly reducing rush-hour congestion at this bottleneck.
7. Advisory Lorry Routes – new signage directing lorries to the main businesses in the area (Kanes, Unipart, Honeybourne Trading Estate, etc) were erected on all routes from the A46 avoiding the weight restricted roads and low bridges.
8. The white line road marking in the village were re-painted.
9. A new Highways sign to the Post Office from Weston Rd has been requested.
10. Make-Over Day for Honeybourne in September 2016 - A special team of skilled workman from Highways descended on the village one weekend and worked all day to improve all the street infrastructure including benches, signs, bus shelters, barriers, and cleared all weeds, and strimmed all verges and made the place look ship-shape!
11. Repairs to the raised pavement in High Street which was damaged by a car crash.

Also announced in the last 12 months was the WCC Driving Home Highways programme which commits an extra £12m to be spent on rural roads over the next 2 years.

Overflow car parking for the Station - Network Rail has confirmed to WDC that they are looking to install a new car park for up to 200 car parking spaces at Honeybourne in the long term (within 6 years). In the short term, Bovis Homes are still offering to sell some land for a smaller overflow car park behind the new Co-Op store but the process has been

delayed until the option is exercised by the developer building the Co-Op.

The Door Knock by WDC - In May 2016 I spoke to residents about what the District Council can do to help them. This is part of the WDC Rural Communities Programme, and 24 houses in Honeybourne were visited, and it was great to meet everyone from a wide cross section of ages. The feedback from the locals I visited was that Honeybourne is a great place to live, most are pleased with the majority of services available and most were well informed and did read the Honeybourne News.

Perrie Drive and Fernihough Avenue Residents Save our Greens - The Wychavon Localism Panel agreed to make the Greens an asset of Community Value after much debate and a site visit.

Green Bins - There are lots of things you should NOT put in the Green Bins such as batteries, plastic bags, black plastics, aluminium foil, old flower pots, electrical appliances, old saucepans, shoes, cloths, etc. Unfortunately if you do put these things in, they you are wasting them as they will be put into land fill. Many of these items can be recycled in the right place –either at certain recycling sites at various shops, or at the Household Recycling Centres. For info look at <http://www.severnwaste.com/envirosort/what-can-i-recycle/> In the next 12 months a new waste contract is to start which will add batteries and small electrical items to the list of goods which will be included in the kerbside collection – more information to follow.

Mobile Speed cameras - After several years of lobbying, the West Mercia Safer Road Partnership carried out speed surveys on the roads around the area, and agreed to add two sites to their Mobile Speed Enforcement cameras. They are there most weeks, and are issuing speeding tickets on average 12 per hour! So watch out and don't speed through any of the villages.

New Village Hall - In November I attended a meeting between the Honeybourne Village Hall Committee and the MD & Deputy MD of Wychavon District Council about the new village hall. The District Council gave their full support to the village on this project.

Councillor's Divisional Fund - Honeybees WI received a grant paid for some new tables and I managed to obtain a grant for the village hall committee to buy a projector and screen so Honeybourne can start its own Rural Cinema.

County Council elections taking place on 4 May - And finally, just a reminder that the County Council elections are on Thursday 4th May. Four years ago I stood for election as I was fed up with the poor condition of the roads around us, and our broadband was virtually non-existent! I am pleased to say that in the last four years County Council have listened, and their officers have visited Honeybourne many times and carried out improvements. The roads have improved and we now have Superfast Broadband. If you are happy with what I have achieved over the last four years in Honeybourne and the surrounding areas, then please support me on the 4th May.

Your District & County Councillor, Alastair Adams can be contacted on adams.pebworth@gmail.com or mobile 07725 979 277

SportHoneybourne

www.sporthoneybourne.org.uk is the website where you can quickly find your favourite sports and exercises.

Local clubs and classes are all listed, so you have direct access to view their activities. Also, the latest national news feeds are available here for most popular sports.

Is your particular interest Canoeing?

If so, enter the website and select “Water”, and then select “Canoeing”.

Or is it Archery?

If so, enter the website and select “Targets”, and then select “Archery”.

Anything missing?

What will you do today?

Maybe set a Personal Best (PB), however short or slow. We can all do just a little more to improve our health and fitness.

Need help or support? Contact Steve who will be only too pleased to help in any way.

www.sporthoneybourne.org.uk

HONEYBOURNE PLAY-READING GROUP



After last month's reading of Woody Allen's romantic comedy: *Play it Again, Sam*; our spring season concludes with a get-together on **Thursday, 18th May at 7:30pm** (reading yet to be confirmed).

We are currently at full membership but not every member can make each reading, so there is still plenty of opportunity to get involved. Don't be shy! We aim to keep our play-readings as light-hearted and entertaining as possible and offer a welcome drink and nibbles on arrival.

The group is open to all villagers and those from the neighbouring area. They meet on the third Thursday of each month in Stephenson Way. Membership is free and all reading material is provided.

For further details, please contact Nicola Hogan

Mobile: 0785 191 3435 / Email: honeybourneplayreadinggroup@gmail.com

live
happy!
with
Slimming World



**Honeybourne Village Hall
Every Thursday 7pm**

**Lose weight without going hungry
Still enjoy your favourite meals**

**Want to know more call Julie
075115 18445**

**Or just pop along - a warm welcome
awaits**

visit the website for delicious recipes
slimmingworld.co.uk

f t i 0344 897 8000

Slimming
WORLD

touching hearts, changing lives



Local Lawncare Specialists

Now is the perfect time to get your lawn in shape for the summer

Services include

- | | | | |
|---|---------------------|----------------------|---|
| □ | Moss & Weed Control | Scarification | □ |
| | Seasonal Treatments | Hollow-tine Aeration | |
| | Turfing | Lawn Mowing | |

Services also include

- Patio and Drive weed removal
- Hedge Trimming
- Tree and Shrub care
- General Garden Maintenance

□

Contact Raffe Wood today on
07496 453667
01386 324878

□



the Fleece Inn

The Cross, Bretforton, Nr. Evesham,
Worcestershire WR11 7JE

Tel: 01386 831173

Email: info@thefleeceinn.co.uk

www.thefleeceinn.co.uk

May at the Fleece

British Asparagus Festival 23 April - 21 June

We're turning green for Vale Gras! Celebrate the new PGI status of Vale of Evesham Asparagus throughout the season at The Fleece Inn

Taste & Tour - Mon 8 May, £20

Crows - Fri 12 May, 8pm, £12.50

Phillip Henry and Hannah Martin - Fri 26 May, 8pm, £12.50

Silver Band Asparagus Auction - Sun 28 May, from 6.30pm

Biker Nite- Wed 31 May, 7pm, Free Entry + Live music & pizza!

Asparafest Music & Food Festival: 2-4 June at Ashdown Farm

Earlybird Weekend tickets £12.50, under 10's free www.asparafest.co.uk

St Leonard's Church Asparagus Auction - Sun 4 June, 6.30pm

Folk Nights – open to all, every Thurs. Celtic Folk Night - Third Wednesdays.

Fizzy Friday - Every Friday 12noon - 9pm

Take Away Fish & Chips - Treat yourself for just £5.95

Food served: Monday to Friday 12pm-2.30pm & 6.30pm-9pm

Saturday 12pm-3pm & 6pm-9pm. All day Sunday 12pm to 8.30pm

Country Pub of the Year (Good Pub Guide 2016)

Visit England Tourism Pub of the Year 2016 Gold Winner

For more events and our current menu see www.thefleeceinn.co.uk

Phone: 01386 831173 Email: info@thefleeceinn.co.uk





Your local friendly garage

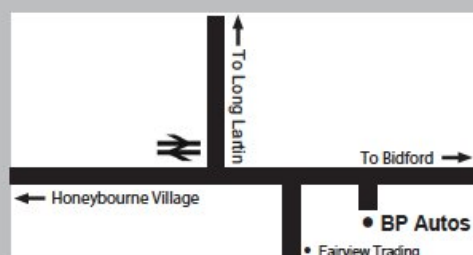
**For Servicing and Repairs to all Vehicle Makes
Cars to Light Commercial Vehicles**

**Batteries • Tyres • Exhausts
Wheel Balance • Wheel Alignment
Diagnostics • Puncture Repairs
And Much More!**

**Give us a call or drop in and see us.
We are here to help you safely on your journey.**

T: 01386 832157

**The Old Brickworks
Buckle Street
Honeybourne
Evesham WR11 8QE**



Opening hours

Mon to Fri: 8am - 6pm

Sat: 8am - 1pm

Honeybourne Parish Council

List of Councillors 2015 - 2019

Name	Address	Telephone	
Graham Clelland	Lyndale, Station Road, Honeybourne, Evesham WR11 7QG	01386 832500	E
Andrew Attridge	Kaaga, Friday Street, Pebworth. Or The Ranch Caravan Park	01386 830744	E
David Cowan	10 Westbourne, Honeybourne, Evesham WR11 7PT	01386 831801	E
Colin Clear	23 Dudley Road Honeybourne WR11 7XR	01386 831804	E
Richard Chivers	The Old Vicarage Stratford Road Honeybourne WR11 7PP	01386 830 272	C
Stephen Sidwell	Wychwood, Station Road, Honeybourne, Worc's, WR11 7QG	07815311432	C
Sandra Walsh	The Elms, Buckle Street Honeybourne WR11 8QQ	07714 237 336	C
Heath Jobes	1, Clun Forest Way, Honeybourne WR11 7AP	07736 168736	C
Mathew Henson	4 Herdwick Drive Honeybourne WR11 7AN	07803 608 813	C

Here are the details of the local police officers. The non-emergency number is 101 anywhere in the UK.

Police officer: Julie DeParis - julie.deparis@westmercia.pnn.police.uk

Police Community Support Officer - Pete Davey

peter.davey@westmercia.pnn.police.uk

Tel 0300 333 3000, Voicemail 01905 725763

PSCO Bradley Sansom - bradley.sansom@westmercia.pnn.police.uk

Tel 101, ext 3408

Other useful contacts:

Village Hall Lettings Secretary, for regular bookings call Rita on 01386 640696 or Sylvia on 832215 for one-off events

Honeybourne Sport and Recreation Field - John Stedman, Tel 01789 773 999

Honeytots

Parent and Toddler group

welcomes new people

Wed. 9.15-11.30am term time at Honeybourne First School Hall

£2 per family, snack included

We are aimed at toddler ages but babies are also welcome.

Find us on Facebook- Honeytots

Phone: Vicki Gear 07834 485794

UNIFORMED ORGANISATIONS

1st Honeybourne & District Scout Group consists of:

BEAVERS

Beavers meet on a Wednesday evening at Honeybourne First School from 6.00pm to 7.15pm, for boys & girls aged from 5yrs 9mths to 8 yrs

Contact: Sally Perkins 01386 833915

CUBS

Cubs meet on a Wednesday evening at Honeybourne Village Hall from 6.30pm to 8.00pm for boys & girls aged from 7yrs 6 mths to 10 yrs 6 mths

Contact: Jayne Richmond on 01386 831515

SCOUTS

Scouts meet on a Thursday evening at Pebworth Village Hall from 7.30pm to 9pm for boys & girls aged from 10 yrs to 14 yrs

Contact: Lynn Clements on 01386 833238 or 07950 791610

SEA CADETS

Evesham Sea Cadets and Marine Detachment

meet Monday and Thursday evenings every week at 7.00pm until 9.30pm for young people aged between 10 years to 18 years.

For further information please email: aoevesham@gmail.com or ring us on a parade night on 01386 833383.

Walking on Footpaths

Spring is just around the corner and we know that people look forward to walking their dogs and children in the countryside. Could I please remind everyone that when walking footpaths ALL dogs should be kept on a lead and under control at all times throughout the year. There may not be any sheep in the footpath field but chances are they are in the next door field and at this time of year they could be pregnant and are easily spooked leading to serious problems. Footpaths are a right of way and are for walking along and not for exercising dogs in.

Honeyangels

Honeyangels meet every Tuesday at 10am in the church. We have a few songs, a story, a collection, a drink and cake while the children play with toys and mums or dads chat.

For more information contact Sylvia Matthews on 01386 832215

H-BUG
Cycle rides in Honeybourne
Everyone is welcome

Saturday 6th May	Aspire to cycle 10 or 20 miles 2.00pm at Badham Motors
Saturday 13th May	Aspire to cycle 20 or 40 miles 2.00pm at Badham Motors
Saturday 20th May	“Challenge Hills” A 27-mile cycle ride 2.00pm at Badham Motors
Saturday 27th May	Family cycle ride 2.00pm at the Village Hall
Saturday 3rd June	Aspire to cycle 10 or 20 miles 2.00pm at Badham Motors

LADIES!

Walking Keeps You Fit.

Join our walking group and make new friends.

We do a two-mile walk on Monday, Wednesday and Friday mornings.

For more information call Ann on 01386 830517

We look forward to seeing you.

SHORT MAT BOWLS

If you enjoy watching, and perhaps marvelled at the skill of the professionals performing on T.V. why not come along to the Village Hall on Friday evenings (7.30) and have a go yourselves at a somewhat simpler version called Short Mat Bowls.

All equipment is provided the only thing we ask that you wear flat shoes. Trainers etc. are ideal. The cost is £2 per session.

Please note that everyone within the village of Honeybourne should receive the Honeybourne Village News on the last weekend of the month. The magazine is available TO PURCHASE from the village shop: Please do not just take a copy as it costs both the shop and the magazine itself money. They cost 50p and taking without paying is stealing.

BADHAM MOTORS

Stratford Rd. Honeybourne Evesham.

Tel: 830307

After Hours 831514

**MOTOR ENGINEERS WHO CARE
ALL TYPE OF VEHICLE REPAIR
SERVICING/M.O.T.**

CLASS 3.4.7.

QUALITY USED CARS ALWAYS

COMPLEMENTARY THERAPIES

Emily Parr & Di Richardson

- Reflexology
- Reflexology for fertility and pregnancy
- Sports massage
- Remedial massage
- Indian Head massage
- Aromatherapy



Available at **Evesham Natural Health Centre**, 98 High Street
Please call **01386 421 821** to make an appointment

FILL THE FRAME

All your picture framing needs.

Specialist in framing sport, film, TV and music photos and memorabilia. Wedding collages made to order.

Phil Rainey

45, School St, Honeybourne

Tel. 01386 833505

07969 620555

ADVANCED BOOKING CARS

A ABC Private Hire of Honeybourne **A**

B Call Thomas on **B**

C 07752 640352 / 01386 834028 **C**

www.abcprivatehire.co.uk

Any Destination, Any Time or Day Hire
Airport, Rail, Coach & Sea Port Connections
Meet and Greet Service



For all your craft and
sewing needs
No job too big or too
small!

Ring Shirley on 07957 620237
or email craftandsew4u@yahoo.co.uk

craftandsew4u.co.uk

Evergreen Garden Maintenance

Mowing Hedge Cutting
Tree Pruning, Turfing Etc:
No job too small References available
Garden Clearance Service

FOR A FREE QUOTE

Please Phone Tony

T: 01386 854797

M: 07752 613814



To advertise in the Honeybourne Village News or to
contribute to the magazine, please contact Claire Poore
at magazine@honeybourne.org.uk
or phone 01386 832800

Need a Bookkeeper?

Then call

Sally Clifford

on **01386 834 239**

Cashbooks, Ledgers, Sage Work,
Bank Reconciliations, VAT
Returns.

CLAREMONT CARS

PRIVATE HIRE SERVICE

From Bidford & Honeybourne

We offer a professional door to door service by appointment
24 hours a day, 7 days a week.

Serving South Warwickshire, the North Cotswolds and the Vale of Evesham,
we cover all locations, both locally and throughout the U.K.

Estate Cars and people carriers up to 8 seats are available.
We specialise in meet-and-greet facilities at all major UK Airports.
Sample discounted rates (at 1st January 2016) including up to four
passengers (supplement applies for people carrier):

BIDFORD OR HONEYBOURNE to

	From		From
Birmingham	£60	Bristol Airport	£100
Heathrow	£125	Luton Airport	£130
Gatwick	£150	Stansted	£150
Manchester	£140	Southampton	£140

Please enquire for rates from your local area or for any other destination.

FOR THE BEST IN PRIVATE ~HIRE

CALL NOW ON:

01386 833660

Philip Hickson – 53 Stratford Rd, Honeybourne,
Evesham. WR11 7PP

E-mail: info@claremontcars.co.uk

Website: www.claremontcars.co.uk