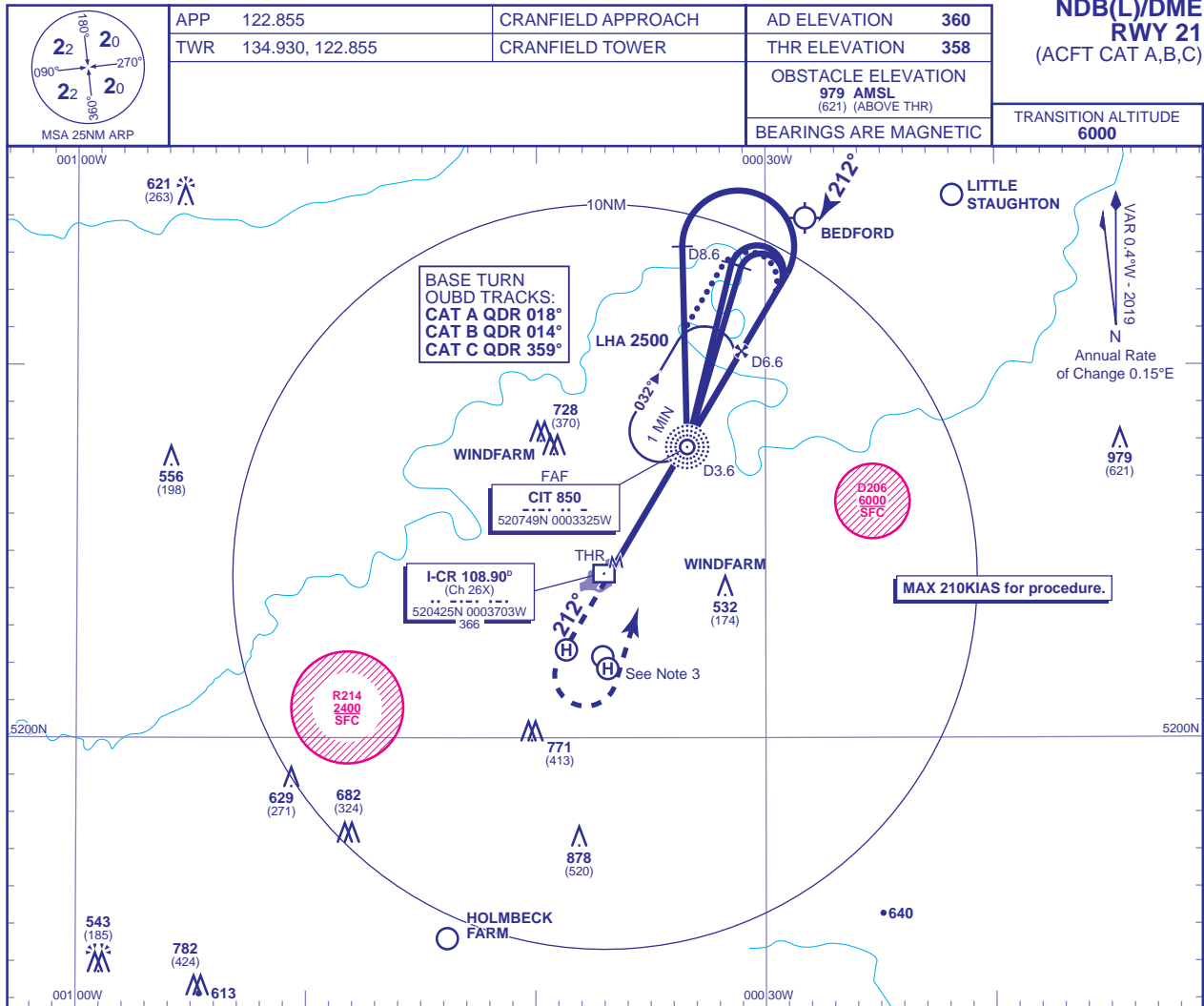


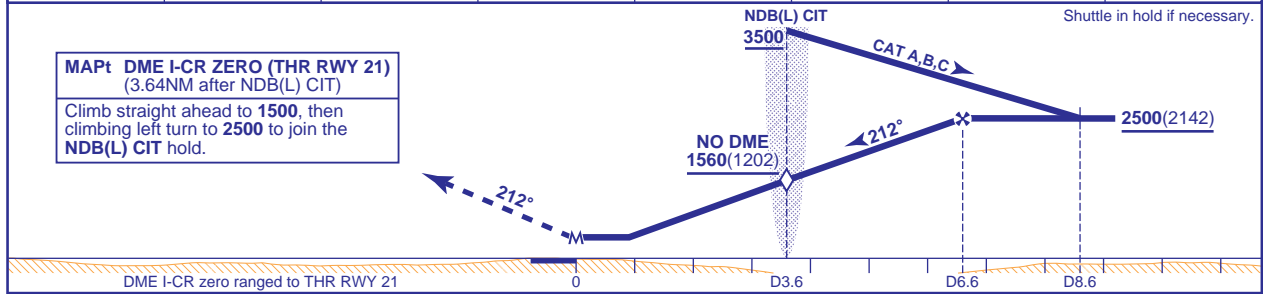
INSTRUMENT APPROACH CHART - ICAO

**CRANFIELD
NDB(L)/DME
RWY 21
(ACFT CAT A,B,C)**



RECOMMENDED PROFILE Gradient 5.2%, 320FT/NM

DME I-CR	6	5	4	3.6 (SDF)	3	2	1
ALT(HGT)	2310(1952)	1990(1632)	1680(1322)	1560(1202)	1360(1002)	1040(682)	730(372)



Aircraft Category		A	B	C	Rate of descent	G/S KT	160	140	120	100	80
OCA (OCH)	Procedure	690(332)	690(332)	690(332)		FT/MIN	860	750	640	540	430
VM(C)OCA (OCH AAL)	Total Area	800(440)	970(610)	1150(790)	NDB(L) CIT to MAPt	MIN:SEC	1:25	1:35	1:50	2:12	2:46

ALTERNATIVE PROCEDURE EXTENDED HOLDING PATTERN
Extend the outbound leg of the NDB(L) CIT holding pattern to D8.6; descending to 2500(2142). then turn right to intercept the FAT. Continue as for main procedure.

AIRCRAFT UNABLE TO RECEIVE DME
Fly outbound prior to Baseturn or extended outbound leg of the NDB(L) CIT hold for 2.5MIN (CAT A); 2MIN (CAT B); 1.5MIN (CAT C) descending to 2500(2142). Then turn right to intercept the FAT. When established inbound descend not below 1560(1202) at the SDF (NDB(L) CIT), then to MDH.

- NOTE 1** ATC will normally require holding **not below 3500**. Lowest altitude to commence procedure after missed approach is **2500**.
NOTE 2 CIT NDB(L) hold restrictions: MAX holding level **5000**, MAX **180KIAS**.
NOTE 3 Occasional light aircraft and helicopter activity at Salford Helipad (520222N 0003841W), Hulcote Farm (520211N 0003706W), and Helimech Helipad (520152N 0003653W).
NOTE 4 Aircraft may be requested to report crossing the DTY115 radial.

CHANGE (10/18): FREQUENCIES.

AERO INFO DATE 14 JUN 18